



HELLENIC REPUBLIC
HELLENIC STATISTICAL AUTHORITY

Piraeus, 15 June 2017

PRESS RELEASE

LABOUR FORCE SURVEY: 1st quarter 2017

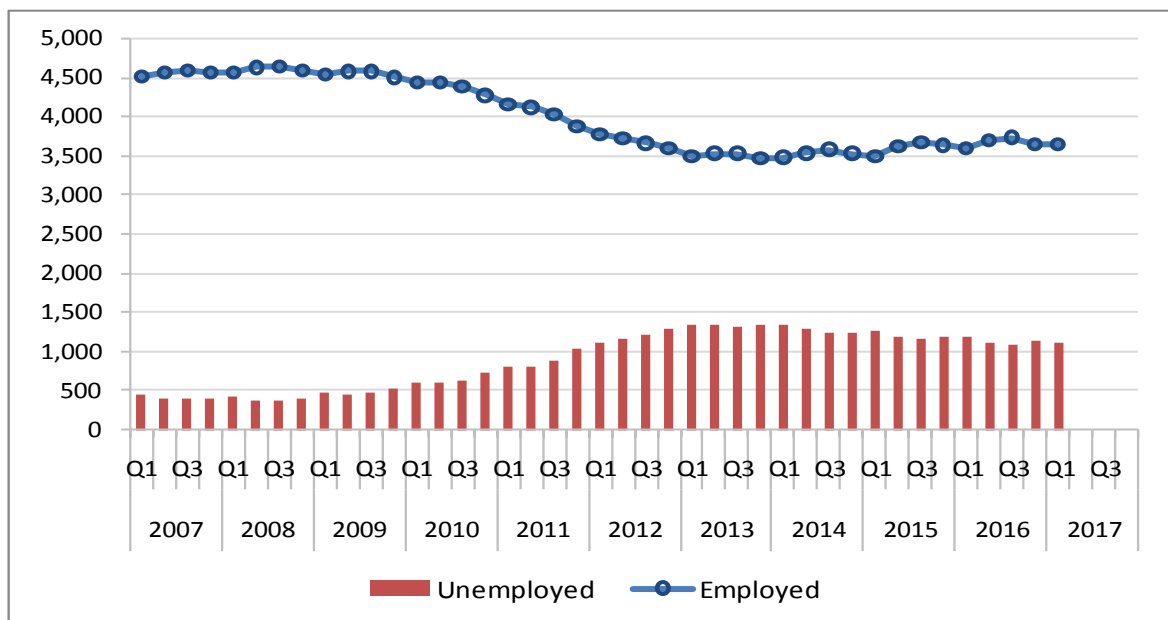
The Hellenic Statistical Authority (ELSTAT) announces the results of the Labour Force Survey for the 1st Quarter of 2017. The estimates presented in this press release are based on the quarterly Labour Force Survey. It is noted that the quarterly results of the Labour Force Survey are not seasonally adjusted.

More analytically, in 1st quarter 2017:

- The **number of employed** amounted to 3,659,250 persons while the **number of unemployed** amounted to 1,114,715 persons.
- The **unemployment rate** was 23.3% down from 23.6% in the previous quarter (4th Quarter 2016), and 24.9% in the same quarter one year ago (1st Quarter 2016).
- The **number of employed** persons increased by 0.3% compared with the previous quarter and increased by 1.5% compared with the same quarter one year ago.
- The **number of unemployed** persons decreased by 0.8% compared with the previous quarter and by 6.7% compared with the same quarter one year ago.

Graph 1. Number of employed and unemployed

(In thousands)



Information

Population and Labour Market Statistics Division

Labour Force Survey Section

Stelios Zachariou

tel.: +30 213 135 2173

Fax: +30 213 135 2948

e-mail: lfs@statistics.gr

I. EMPLOYMENT STATUS

Table 1. Employment status by sex, age, region, educational level and citizenship ⁽¹⁾, 1st quarter 2017

(In thousands)

		Employed	Unemployed	Inactive	Unemployment rate (%)	Labour force rate (%)
	Total⁽²⁾	3,659.3	1,114.7	4,416.7	23.3	51.9
SEX	Males	2,124.4	523.5	1,783.1	19.8	59.8
	Females	1,534.8	591.2	2,633.6	27.8	44.7
AGE	15 - 19	12.9	19.5	501.2	60.2	6.1
	20 - 24	128.7	105.3	285.1	45.0	45.1
	25 - 29	323.2	163.6	100.8	33.6	82.8
	30 - 44	1,574.8	457.7	282.0	22.5	87.8
	45 - 64	1,552.7	359.4	1,037.7	18.8	64.8
	65+	66.9	9.2	2,209.9	12.1	3.3
REGION (NUTS 2)	Anatoliki Makedonia Thraki (Eastern Macedonia and Thrace)	201.2	57.2	253.1	22.1	50.5
	Kentriki Makedonia (Central Macedonia)	616.2	195.7	791.4	24.1	50.6
	Dytiki Makedonia (Western Macedonia)	82.4	36.6	116.3	30.8	50.6
	Ipeiros (Epirus)	102.8	36.7	152.8	26.3	47.7
	Thessalia (Thessaly)	242.9	73.0	305.9	23.1	50.8
	Ionioi Nisoι (Ionian Islands)	63.5	23.7	85.2	27.2	50.6
	Dytiki Ellas (Western Greece)	216.2	81.1	276.2	27.3	51.8
	Stereia Ellas	183.1	54.2	236.6	22.9	50.1
	Attiki (Attica)	1,360.9	383.6	1,530.1	22.0	53.3
	Peloponnissos (Peloponnese)	196.9	46.9	225.2	19.2	52.0
	Voreio Aigaiο (Northern Aegean)	67.7	20.8	76.8	23.5	53.5
	Notio Aigaiο (Southern Aegean)	110.4	35.9	128.6	24.5	53.2
	Kriti (Crete)	215.2	69.2	238.5	24.3	54.4
EDUCATIONAL LEVEL	Less than primary	14.4	8.8	354.7	38.0	6.2
	Primary education	386.9	130.2	1,520.1	25.2	25.4
	Secondary education	1,600.1	559.7	1,882.5	25.9	53.4
	Post - secondary	346.8	138.6	151.4	28.6	76.2
	Tertiary Education	1,311.0	277.3	508.1	17.5	75.8
CITIZENSHIP	Greek	3,454.4	1,018.0	4,278.9	22.8	51.1
	Foreign	204.8	96.7	137.8	32.1	68.6

The highest unemployment rates are observed among women, persons aged 15 - 19 years, in Western Macedonia, and persons that completed less than primary education. The highest percentage of the labour force is observed among men, persons aged 30 - 44 years, in Crete, persons that completed tertiary education and persons of foreign citizenship.

(1) The definitions of the characteristic that are presented in Table 1 and the other tables of the press - release can be found in the **Explanatory notes**, at the end of the press-release, under "Definitions".

(2) Any difference between the grand total and the sum of the detailed categories is due to rounding

II. CHARACTERISTICS OF EMPLOYED PERSONS

Table 2 presents the number of employed by professional status, occupation, full-time and part-time employment, permanent and temporary job for the 1st quarter of 2017. Furthermore, the table includes the corresponding data for the previous quarter and the same quarter one year ago, as well as the corresponding quarterly and annual rates of change.

Table 2. Employed persons by professional status, occupation, full-time and part-time job, permanent - temporary job

(In thousands)

	1st quarter 2017	Percentage over total	4th quarter 2016	1st quarter 2016	Quarterly rate of change (%)	Annual rate of change (%)
Total	3,659.3		3,648.6	3,606.3	0.3	1.5
Professional status						
Self-employed with employees	267.7	7.3	272.7	267.8	-1.8	0.0
Self-employed without employees	851.9	23.3	832.2	824.9	2.4	3.3
Employees	2,394.7	65.4	2,400.9	2,371.9	-0.3	1.0
Family workers	145.0	4.0	142.8	141.8	1.5	2.3
Occupation						
Legislators, senior officials and managers	88.4	2.4	88.8	105.3	-0.5	-16.0
Professionals	725.9	19.8	720.6	707.2	0.7	2.6
Technicians and associate professionals	300.1	8.2	290.9	299.1	3.2	0.3
Clerks	378.9	10.4	377.7	378.1	0.3	0.2
Service workers and shop and market sale workers	854.5	23.4	872.3	847.7	-2.0	0.8
Skilled agricultural and fishery workers	420.7	11.5	412.5	410.6	2.0	2.5
Craft and related trade workers	344.8	9.4	346.7	343.9	-0.5	0.3
Plant and machine operators and assemblers	230.5	6.3	224.7	214.2	2.6	7.6
Elementary occupations	249.2	6.8	249.9	239.9	-0.3	3.9
Other unclassified persons	66.3	1.8	64.5	60.4	2.8	9.8
Full-time, part-time job						
Full time	3,274.1	89.5	3,274.3	3,254.6	0.0	0.6
Part time	385.2	10.5	374.3	351.7	2.9	9.5
Employees by permanent - temporary job						
Permanent	2,168.6	59.3	2,161.1	2,120.6	0.3	2.3
Temporary	226.1	6.2	239.8	251.4	-5.7	-10.1

In the 1st quarter of 2017, the majority of the employed are working as employees (65.4%), while a significant share is working as self-employed without employees (23.3%). In comparison with the previous quarter, a decrease is observed in the number of self-employed with employees and in the number of employees. In comparison with the same quarter one year ago, there is no change in the number of self-employed with employees while an increase is recorded in all other categories.

Part-time employment amounts to 10.5%, recording an increase in comparison with the previous quarter and the same quarter one year ago. The share of persons with temporary jobs is 6.2%, recording a decrease in comparison with the previous quarter and the same quarter one year ago.

The occupations gathering the biggest shares of the employed are service workers and shop and market sale workers (23.4%), professionals (19.8%) and skilled agricultural and fishery workers (11.5%). In comparison with the previous quarter, a decrease is observed in the number legislators, senior officials and managers, in the number of service and shop and market sale workers, in the number of craft and related trade workers and in the number of persons working in elementary occupations. In comparison with the same quarter one year ago, an increase is observed in all occupations except legislators, senior officials and managers.

During the period 1st quarter 2007 – 1st quarter 2017, a significant increase in the share of low skilled non-manual occupations is observed⁽³⁾. During the same period, the share of highly skilled non manual and skilled manual occupations decreased, while the share of elementary occupations and of occupations in agriculture, forestry and fishing remained relatively stable (Graph 2).

Graph 2: Percentage of employed by broad categories of occupations

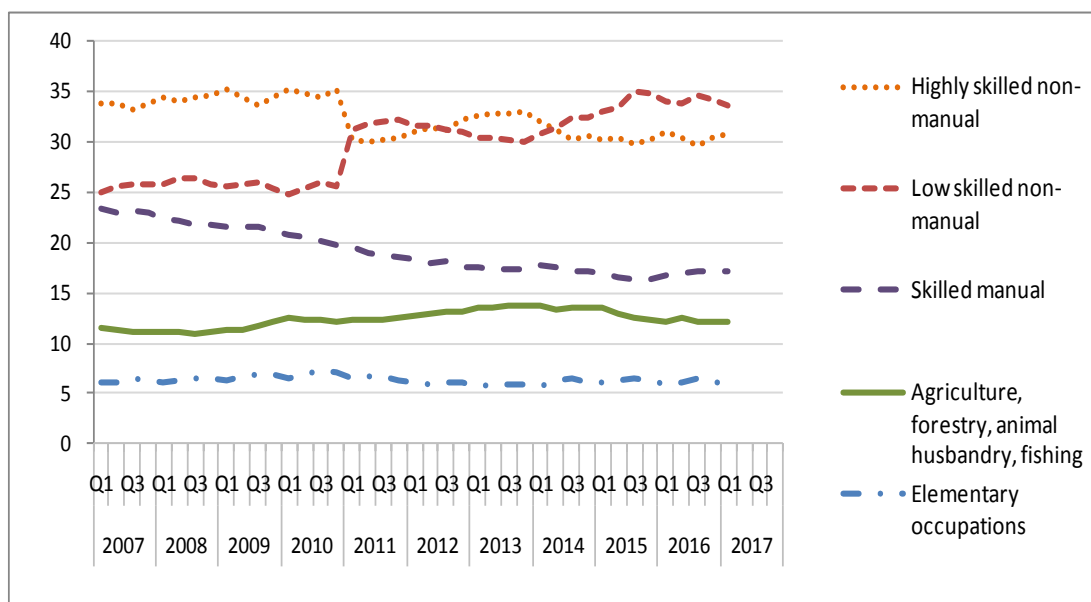


Table 3 presents the number of the employed by section of economic activity in the 1st quarter of 2017. Furthermore, the table includes the corresponding data for the previous quarter and the same quarter one year ago, as well as the corresponding quarterly and annual rates of change.

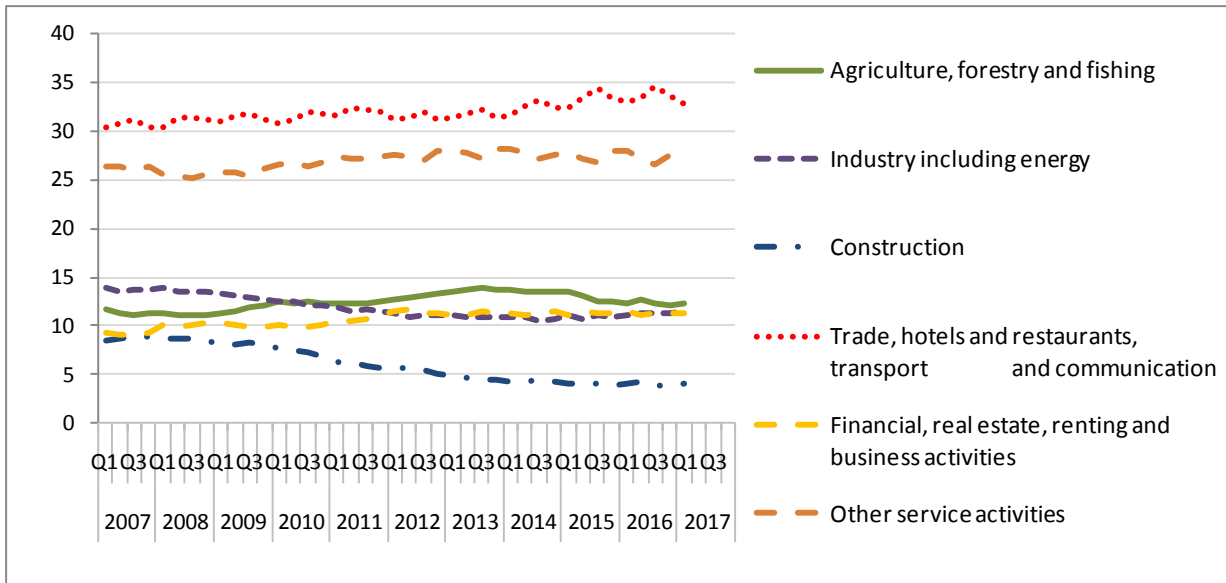
(3) It should be noted that in 2011 the new classification ISCO-08 was used for the classification of occupations, and as a result, there is a sudden decrease of the “Highly skilled non-manual” occupations and a corresponding increase of “Low skilled non-manual”.

Table 3. Employed persons by section of economic activity*(In thousands)*

	1st quarter 2017	Percentage over total	4th quarter 2016	1st quarter 2016	Quarterly rate of change(%)	Annual rate of change(%)
A. Agriculture, forestry and fishing	450.9	12.3	445.0	445.3	1.3	1.3
B. Mining and quarrying	12.1	0.3	12.9	13.3	-6.2	-9.0
C. Manufacturing	349.6	9.6	346.1	338.7	1.0	3.2
D. Electricity, gas, steam and air conditioning supply	29.9	0.8	28.2	27.8	6.0	7.6
E. Water supply; sewerage, waste management and remediation activities	25.6	0.7	23.5	22.3	8.9	14.8
F. Construction	148.4	4.1	141.8	146.4	4.7	1.4
G. Wholesale and retail trade; repair of motor vehicles and motorcycles	661.2	18.1	660.3	655.2	0.1	0.9
H. Transportation and storage	184.0	5.0	185.7	180.2	-0.9	2.1
I. Accommodation and food service activities	303.5	8.3	328.8	303.0	-7.7	0.2
J. Information and communication	82.6	2.3	82.9	76.2	-0.4	8.4
K. Financial and insurance activities	94.3	2.6	95.7	92.9	-1.5	1.5
L. Real estate activities	4.3	0.1	4.6	6.4	-6.5	-32.8
M. Professional, scientific and technical activities	198.7	5.4	197.8	210.1	0.5	-5.4
N. Administrative and support service activities	85.3	2.3	88.8	78.7	-3.9	8.4
O. Public administration and defense; compulsory social security	335.4	9.2	335.6	325.6	-0.1	3.0
P. Education	310.5	8.5	297.1	304.9	4.5	1.8
Q. Human health and social work activities	222.0	6.1	218.4	213.9	1.6	3.8
R. Arts, entertainment and recreation	50.7	1.4	51.3	47.8	-1.2	6.1
S. Other service activities	71.7	2.0	64.4	72.0	11.3	-0.4
T. Activities of households as employers	36.4	1.0	37.9	41.9	-4.0	-13.1
U. Activities of extraterritorial organizations and bodies	2.0	0.1	2.0	3.5	0.0	-42.9

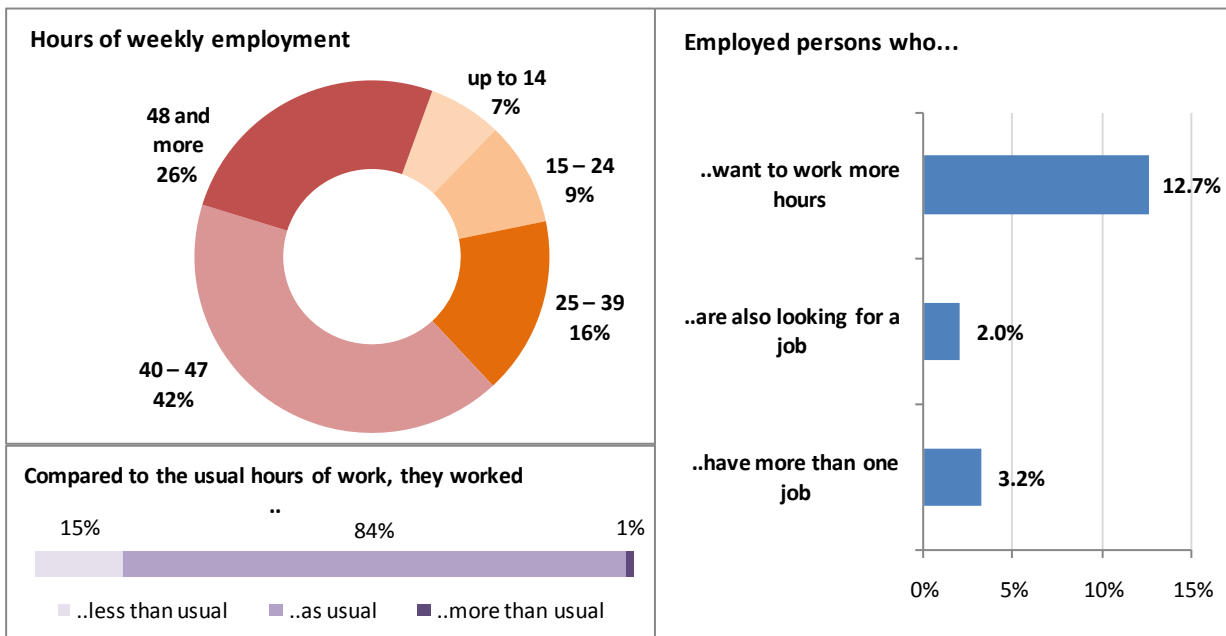
If we examine the changes in percentage distribution of the employed persons in broad groups of economic activity during the period 1st quarter 2007 – 1st quarter 2017, an increase is observed in the share of persons working in trade, hotels and restaurants, transport and communication, while a decrease is recorded in the share of persons working in construction and industry (Graph 3).

Graph 3: Percentage of employed persons by broad groups of economic activity



Most of the employed (42.0%) report having worked 40 - 47 hours in the reference week, while a significant share (26.0%) reports having worked for 48 hours or over. The vast majority of the employed persons (84.0%) worked the usual hours during the reference week, while 12.7% of them state that they wish to work more hours, 3.2% reports having a second job and 2.0% of the employed are looking for a job, even though they have one (Graph 4).

Graph 4: Hours worked, existence of a second job, wish to work more hours and search for a job, 1st quarter 2017



III. CHARACTERISTICS OF UNEMPLOYED PERSONS

Table 4 presents the number of unemployed by reason for leaving the last job, duration of unemployment, type of employment they are looking for and by registration in a public employment office (OAED, for Greece) for the 1st quarter 2017. Furthermore, the table includes the corresponding data, for the previous quarter and the same quarter one year ago, as well as quarterly and annual rates of change.

Table 4. Unemployed by reason for leaving the last job, duration of unemployment, type of employment sought and registration in public employment office

(In thousands)

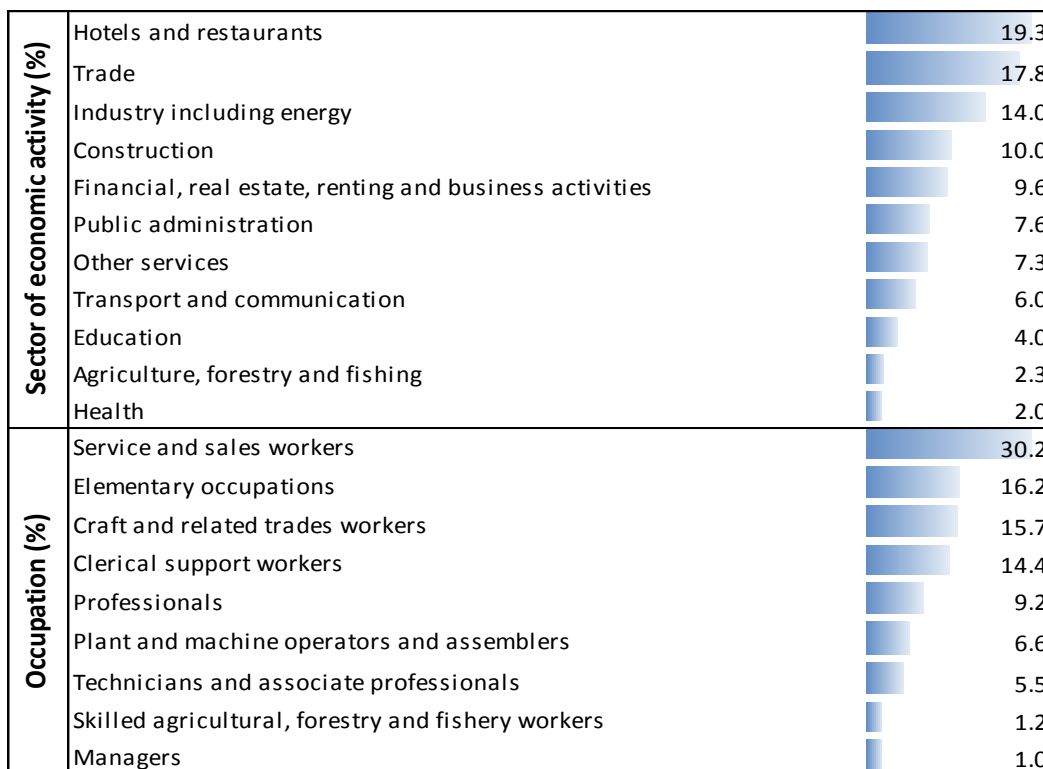
	1st quarter 2017	Percentage over total	4th quarter 2016	1st quarter 2016	Quarterly rate of change(%)	Annual rate of change(%)
Total	1,114.7		1,124.0	1,195.1	-0.8	-6.7
Reason for leaving the last job						
Never worked in the past	214.1	19.2	227.3	251.8	-5.8	-15.0
Dismissed or made redundant	302.2	27.1	324.3	347.4	-6.8	-13.0
A job of limited duration has ended	316.1	28.4	306.1	317.5	3.3	-0.4
Other reason	161.4	14.5	169.1	173.3	-4.6	-6.9
Did not report a reason ⁽⁴⁾	120.9	10.8	97.2	105.1	24.4	15.0
Duration of unemployment						
Will start now searching for employment	4.7	0.4	7.9	4.0	-40.5	17.5
Less than 1 month	21.6	1.9	36.1	27.3	-40.2	-20.9
1 - 2 months	64.0	5.7	86.9	74.7	-26.4	-14.3
3 - 5 months	132.5	11.9	78.2	126.2	69.4	5.0
6 - 11 months	112.8	10.1	107.9	123.0	4.5	-8.3
<i>Long - term unemployed</i>						
12 - 17 months	119.8	10.7	128.5	130.9	-6.8	-8.5
18 - 23 months	95.6	8.6	91.6	110.3	4.4	-13.3
24 - 47 months	194.4	17.4	206.7	232.1	-6.0	-16.2
4 years or more	369.4	33.1	380.1	366.6	-2.8	0.8
Type of employment sought						
As self employed	30.4	2.7	27.5	23.2	10.5	31.0
As employee, only full-time job	131.4	11.8	131.7	140.8	-0.2	-6.7
As employee and full-time job is sought, but if not available, part - time job will be accepted	889.7	79.8	908.6	975.8	-2.1	-8.8
As employee and part - time job is sought, but if not available, full - time job will be accepted	12.5	1.1	10.7	18.9	16.8	-33.9
As employee, only part-time job	6.6	0.6	9.2	9.6	-28.3	-31.3
As employee, and did not state whether full-time or part-time job is looked for	44.2	4.0	36.2	26.7	22.1	65.5
Registration at a public employment office (OAED)						
Person is registered at a public employment office and receives benefit or assistance	140.4	12.6	123.2	140.0	14.0	0.3
Person is registered at a public employment office but does not receive benefit or assistance	709.7	63.7	725.8	746.0	-2.2	-4.9
Person is not registered at a public employment office	263.2	23.6	273.4	307.1	-3.7	-14.3
Did not answer	1.4	0.1	1.6	2.0	-12.5	-30.0

(4) Persons who worked for the last time more than 8 years ago are not asked why they stopped working.

Most unemployed persons report as main reason for stopping their last job, that it was a job of limited duration that ended (28.4%) or that they were dismissed (27.1%). In the 1st quarter 2017, the number of unemployed that stopped working because of the termination of a temporary job has increased compared to the previous quarter and slightly decreased compared to the same quarter one year ago. A significant part of the unemployed was working in the hotels and restaurants sector (19.3%) and in the trade sector (17.8%). As regards the occupation of their previous employment, the majority (30.2%) was working as service and sales workers (Graph 5). The share of the unemployed that have not worked in the past amounts to 19.2%.

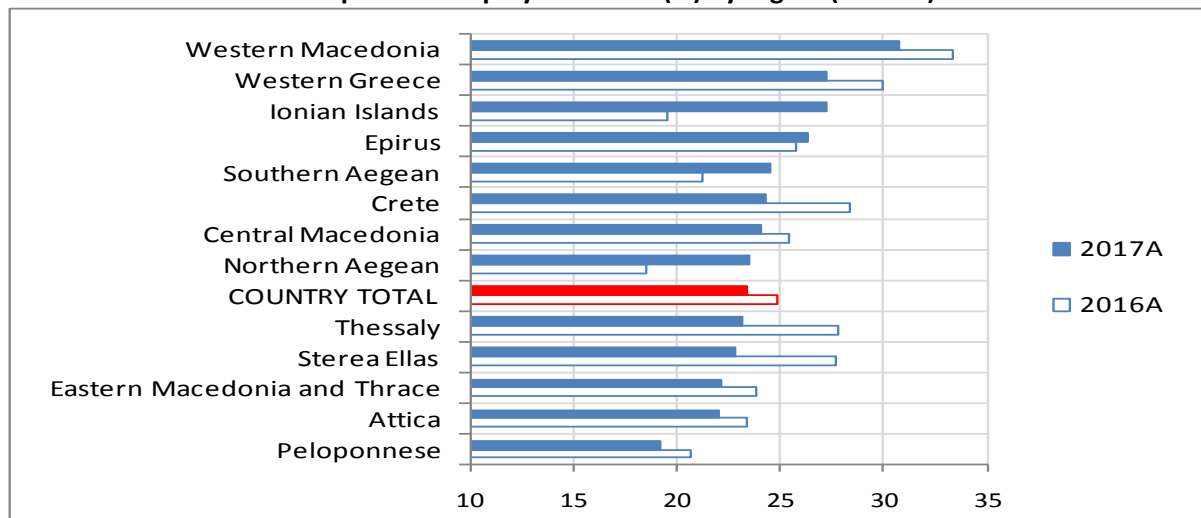
The majority of the unemployed (69.9%) are seeking for a job for one year or more (long-term unemployed), while 91.6% of the unemployed is looking for full time employment as employee. 23.6% of the unemployed report that they are not registered at public employment office (OAED), while 12.6% report that they receive a benefit or assistance from public employment office.

Graph 5: Sector of economy and occupation of the last job of unemployed, 1st quarter 2017.



The unemployment rates recorded in Peloponnese, Attica, Eastern Macedonia and Thrace, Sterea Ellas and Thessaly, record unemployment rates that are lower than the national average. All other regions record unemployment rates that are higher than the national average, (Graph 6).

Graph 6: Unemployment rate (%) by region (NUTS 2)



IV. CHARACTERISTICS OF INACTIVE PERSONS

Table 5 presents the number of the inactive, aged less than 75, by existence of previous work experience, reason for leaving the last job and reason for not seeking employment for the 1st quarter 2017. Furthermore, the table includes the corresponding data for the previous quarter and the same quarter one year ago, as well as the corresponding quarterly and annual rates of change.

Table 5. Inactive, aged less than 75 years, by existence of previous work experience, reason for leaving the last job and reason for not seeking employment

(In thousands)

	1st quarter 2017	Percentage over total	4th quarter 2016	1st quarter 2016	Quarterly rate of change(%)	Annual rate of change(%)
Total	3,255.2		3,265.4	3,265.1	-0.3	-0.3
Existence of previous employment experience						
Never worked in the past	1,518.0	46.6	1,518.7	1,532.5	0.0	-0.9
Worked in the last job more than 8 years ago ⁽⁵⁾	874.6	26.9	814.7	843.2	7.4	3.7
Worked in the last 8 years	862.6	26.5	932.0	889.4	-7.4	-3.0
Reason for leaving the last job						
Dismissed or made redundant	41.7	4.8	48.6	46.3	-14.2	-9.9
A job of limited duration has ended	82.3	9.5	86.6	70.4	-5.0	16.9
Had to look after children or incapacitated adults	13.6	1.6	13.4	11.0	1.5	23.6
Resigned for other personal or family reasons	25.8	3.0	26.0	19.3	-0.8	33.7
Due to education of training	12.1	1.4	12.9	16.8	-6.2	-28.0
Own illness or disability	32.4	3.8	36.4	35.1	-11.0	-7.7
Early retirement	37.1	4.3	44.1	46.5	-15.9	-20.2
Retirement	560.1	64.9	604.7	582.7	-7.4	-3.9
Other reason	57.5	6.7	59.4	61.3	-3.2	-6.2
Reason for not seeking employment						
Person is looking for work but is not available to start within 2 weeks	48.1	1.5	49.9	43.4	-3.6	10.8
Had to look after children or incapacitated adults	106.0	3.3	105.8	101.2	0.2	4.7
For other personal or family reasons	246.5	7.6	246.3	239.5	0.1	2.9
Due to education of training	775.1	23.8	765.3	797.4	1.3	-2.8
Is in retirement	1,265.0	38.9	1,271.3	1,283.2	-0.5	-1.4
Because of own illness or disability	167.7	5.2	158.1	150.9	6.1	11.1
Believes that no work is available	40.5	1.2	38.6	35.5	4.9	14.1
Other reason	563.8	17.3	583.7	567.7	-3.4	-0.7
Did not report a reason	42.5	1.3	46.4	46.2	-8.4	-8.0

The majority of inactive persons, 15 - 74 years old, have not worked in the past (46.6%) or they worked for the last time more than 8 years ago (26.9%).

Among the persons that worked for the last time during the previous 8 years, the majority stopped working due to retirement (64.9%) or because it was a job of limited duration that ended (9.5%).

The main reason reported by inactive for not seeking employment is that they are in retirement (38.9%) or in education or training (23.8%). 1.5% of the inactive is seeking for a job but is not currently available to start working. 1.2% of the inactive is not seeking a job because they believe that no work is available.

(5) Persons who worked for the last time more than 8 years ago, are not asked why they stopped working.

EXPLANATORY NOTES

Labour Force Survey The Labour Force Survey produces estimates since 1981 (second Quarter of the year). From 1998 onwards it is a continuous quarterly survey. The main statistical objective of the Labour Force Survey is to divide the population of working age (15 years and over) into three mutually exclusive and exhaustive groups - persons in employment, unemployed persons and inactive persons. In addition, the Labour Force Survey collects information on demographic characteristics, main job characteristics, the existence and characteristics of a second job, educational attainment, participation in education, previous working experience and search of a job.

Legislation The current survey is completely harmonized with European legislation. The principal legal act is Council Regulation (EC) No. 577/98 that stipulates the provisions on design, survey characteristics and decision-making processes. The survey framework was amended by successive Commission Regulations (Regulation (EC) No 1372/2007, Regulation (EC) No 2257/2003, Regulation (EC) No 1991/2002).

Reference Period The sample of the Labour Force Survey is equally allocated to the 4 (or 5) weeks of the month. Every selected household is assigned to a specific week, the reference week, running from Monday to Sunday.

- for employment, the reference period is the reference week,
- for employment seeking, the reference period is the reference week and the previous 3 weeks.

Coverage The survey covers all members of the private households, who are residing at least one year in Greece and excludes the members of collective households (i.e. hospitals, hotels, military camps, asylums, homes for the elderly, orphanages, etc).

Methodology The estimates of the Labour Force Survey are produced by a suitable unbiased estimator, which takes in to account: a) the probability of selection of every sampled household, b) the response rate in every primary sampling unit, c) the allocation of population by NUTS 2 Regions, gender and age group.

Definitions **Employed:** persons aged 15 years or older, who during the reference week worked even for just one hour for pay or profit or they were working in the family business, or they were not at work but had a job or business from which they were temporarily absent.

Unemployed: persons aged 15 - 74, who were without work during the reference week (they were not classified as employed), were currently available for work and were either actively seeking work in the past four weeks or had already found a job to start within the next three months.

Inactive: persons who are neither classified as employed nor as unemployed.

Economically active population (labour force): persons either employed or unemployed.

Unemployment Rate: the ratio of unemployed divided by total labour force.

Regions: the 13 NUTS 2 areas in which Greece is divided.

Educational level: the highest completed level of education provided in 4 categories. The category "Less than primary" includes persons that never went to school. The category "Primary education" includes persons that completed primary school", and the category "Secondary education" includes persons that completed at most "Lyceum"- Upper Secondary Education. The category "Tertiary education" includes also persons that completed master or PHD.

Self-employed with employees: persons that who work in their own business, professional practice or farm for the purpose of earning a profit, and who employ at least one other person.

Self-employed without employees: persons that who work in their own business, professional practice or farm for the purpose of earning a profit, and who do not employ any other person.

Employees: persons who work for a public or private employer and who receive compensation in the form of wages, salaries, fees, gratuities, payment by results or payment in kind.

Family workers: persons who help another member of the family to run an agricultural holding or other business, provided they are not considered as employees.

Part-time job: a workers job where the normal hours of work are less than those of comparable full-time workers. The distinction between full-time and part-time job is based on the spontaneous answer given by the respondent.

Temporary work: work of **employees** which will terminate either after a period fixed in advance, or after a period not known in advance, but nevertheless defined by objective criteria, such as the completion of an assignment or the period of absence of an employee temporarily replaced.

Duration of unemployment: the time that the respondent is looking for work and, **simultaneously**, had no job.

Sector of economic activity: the classification of economic activities is based on the products that a business produces or the services that provides. Since 2008, a classification equivalent to NACE Rev. 2⁽⁶⁾ is used. Labour Force Survey collects information at 3-digit level for the main job and at 2-digit level for the second and the previous job.

- in Table 3, the NACE Rev.2 classification is used at 1-digit level,
- in Graphs 3 and 5, for the classification of economic activity, the following typologies are used:

Typology of economic sector categories – correspondence with 2-digit NACE Rev. 2 codes		
Typology used in Graph 3	Agriculture, forestry and fishing	01 - 03
	Industry including energy	05 - 39
	Construction	41 - 43
	Trade, hotels and restaurants, transport and communication	45 - 61
	Financial, real estate, renting and business activities	62 - 82
	Other service activities	84 - 99
Typology used in Graph 5	Agriculture, forestry and fishing	01 - 03
	Industry including energy	05 - 39
	Construction	41 - 43
	Trade	45 - 47
	Transport and communication	49 - 53, 58 - 61
	Hotels and restaurants	55 - 56
	Financial, real estate, renting and business activities	62 - 82
	Public administration	84
	Education	85
	Health	86
Other service activities	87 - 99	

(6) <http://www.statistics.gr/el/economic-activities>

Occupation: is a set of jobs consisting of similar tasks and duties. Since 2011 the International Standard Classification of Occupations (ISCO-08⁽⁷⁾) of ILO is used.. The Labour Force Survey collects information at 3-digit level for the main, the second and the previous job.

- in Table 2 and in Graph 5, the ISCO-08 classification is used at 1-digit level,
- in Graph 2, for the classification of occupation, the following typology is used:

Typology of occupation categories – correspondence with ISCO–08 codes	
Highly skilled non-manual <i>(Legislators, senior officials and managers, Professionals, Technicians and associate professionals)</i>	0,1,2,3
Low skilled non-manual <i>(Clerks, Service workers and shop and market sale workers)</i>	4,5
Skilled manual <i>(Craft and related trade workers, Plant and machine operators and assemblers)</i>	0,7,8
Occupations in agriculture, forestry and fishing <i>(skilled and non-skilled)</i>	6 and 92
Elementary occupations <i>(non-skilled workers, except those working in primary sector)</i>	9 except 92

Analytical description of the methodology and definitions used in the Labour Force Survey can be found on the website of ELSTAT at the link:

<http://www.statistics.gr/en/statistics/-/publication/SJO01/->

(7) <http://www.statistics.gr/el/occupation>