



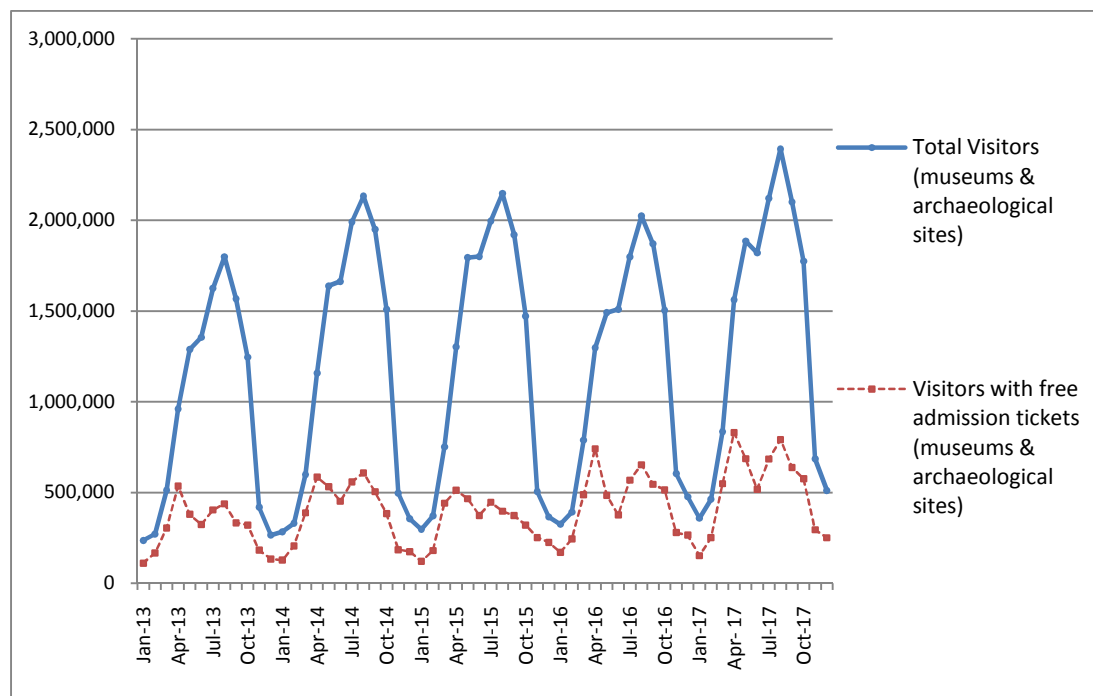
PRESS RELEASE

SURVEY ON MUSEUMS AND ARCHAEOLOGICAL SITES ATTENDANCE DECEMBER 2017

The Hellenic Statistical Authority (ELSTAT) announces the results of the *Survey on Museums and Archaeological Sites Attendance* for December 2017. More specifically:

- In December 2017 compared with the corresponding month of 2016, Museums experienced a 2.9% decrease in the number of visitors and an 8.2% decrease in the number of free admission visitors as well as a 4.6% increase in their receipts (Table 1).
- In December 2017 compared with the corresponding month of 2016, the number of visitors at Archaeological sites recorded an increase of 17.0%, while a decrease of 2.7% was observed in the number of free admission visitors and a 27.4% increase in the corresponding receipts (Table 1).
- During the twelve-month period from January to December 2017, an increase of 15.0% was observed in the number of visitors of Museums, while an increase of 11.9% was recorded in the number of free admission visitors and a 19.9% increase in the relevant receipts, in comparison with the corresponding period of 2016 (Table 2).
- As regards Archaeological sites, during the twelve-month period from January to December 2017, an increase of 18.3% was recorded in the number of visitors, while a 19.9% increase was observed in the number of free admission visitors and an 18.5% increase in the relevant receipts, in comparison with the corresponding period of 2016 (Table 2).

Graph 1: Visitors of Museums and Archaeological sites (Jan 2013 – Dec 2017)



Information:

Social Statistics Division

Section of Culture and Sports statistics,

Argyro Pateraki (Tel: +30 213 1352129, e-mail: ar.pateraki@statistics.gr)

**TABLE 1: VISITORS OF MUSEUMS AND ARCHAEOLOGICAL SITES - TOTAL RECEIPTS
(DECEMBER 2016 & DECEMBER 2017)**

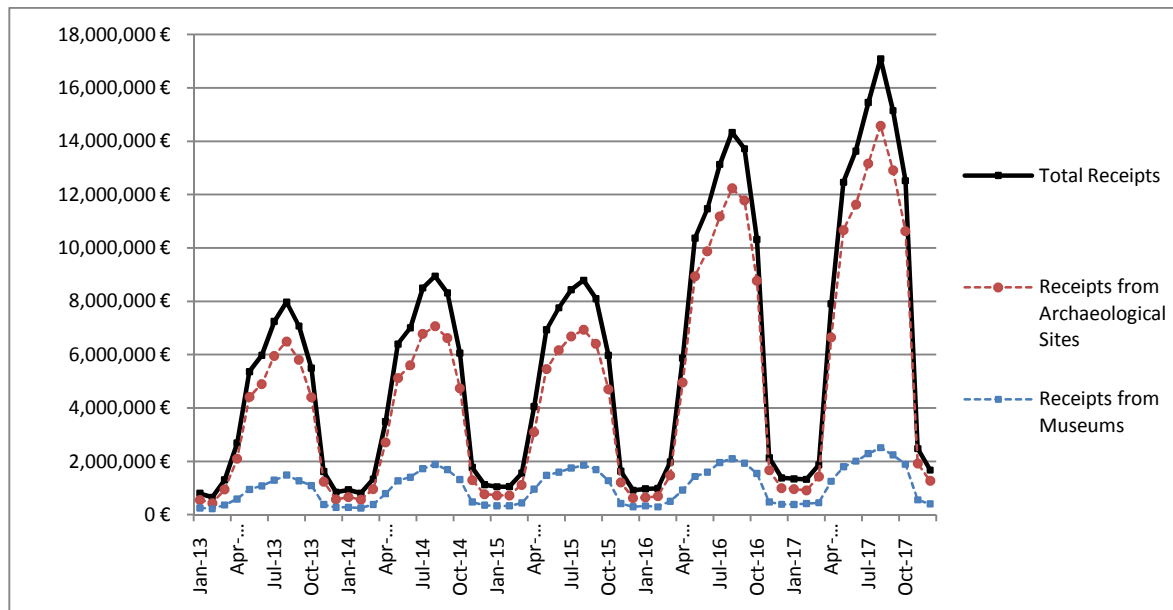
I. VISITORS			
Museums and Archaeological sites	2016	2017	Change 2017/2016
Total number of visitors (A+B)	476,411	511,376	7.3%
A, Museums (C+E)	230,708	223,974	-2.9%
Acropolis Museum	72,101	71,843	-0.4%
National Archaeological	27,486	24,799	-9.8%
Ancient Olympia	2,773	2,981	7.5%
Palace of the Grand Master (Rhodes)	2,170	1,174	-45.9%
Herakleion Archaeological (Crete)	5,342	9,088	70.1%
White Tower	28,544	17,147	-39.9%
Delphi	6,060	7,267	19.9%
Other museums	86,232	89,675	4.0%
B. Archaeological Sites (D+F)	245,703	287,402	17.0%
Epidavros ⁽¹⁾	8,496	9,462	11.4%
The Acropolis of Mycenae & Atreus' Treasure	7,856	9,606	22.3%
The Acropolis of Athens ⁽²⁾	61,142	105,509	-
Sounio	6,951	9,994	43.8%
The Acropolis of Lindos	763	352	-53.9%
Royal Tombs of Vergina	15,161	16,152	6.5%
Ancient Olympia	5,967	9,404	57.6%
Knossos (Crete)	5,165	8,558	65.7%
Phaistos (Crete)	376	3,973	956.6%
Ancient Korinthos ⁽¹⁾	3,227	3,554	10.1%
Mystras ⁽¹⁾	1,924	1,995	3.7%
Delphi	8,510	11,816	38.8%
Other archaeological sites	120,165	97,027	-19.3%
II. VISITORS WHO PAID TICKET			
	2016	2017	Change 2017/2016
Total number of visitors who paid ticket (C+D)	211,067	260,807	23.6%
C. Museums	91,872	96,532	5.1%
D. Archaeological sites	119,195	164,275	37.8%
III. VISITORS WITH FREE ADMISSION TICKETS			
	2016	2017	Change 2017/2016
Total number of visitors with free admission ticket (E+F)	265,344	250,569	-5.6%
E. Museums	138,836	127,442	-8.2%
F. Archaeological sites	126,508	123,127	-2.7%
IV. RECEIPTS (euros)			
	2016	2017	Change 2017/2016
Total Receipts (G+H)	1,379,930,00	1,669,973,00	21.0%
G. Museums	385,269.00	402,968.00	4.6%
H. Archaeological sites	994,661.00	1,267,005.00	27.4%

⁽¹⁾ Flat rate ticket, valid both for the museum and the archaeological site

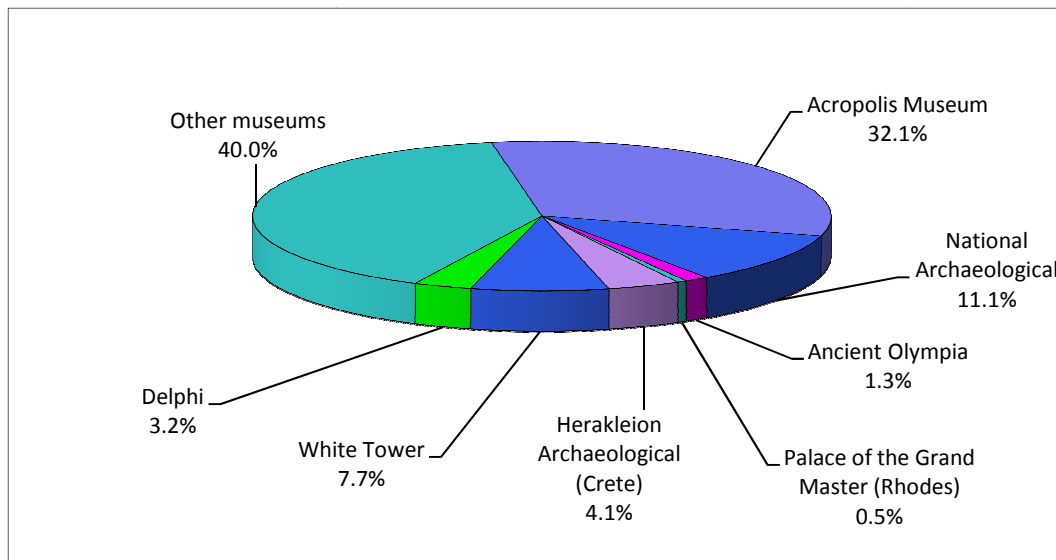
⁽²⁾ From May 2017 onwards, the data for the number of tickets in the archaeological site of the Acropolis of Athens include the tickets of the Ancient Theatre of Dionysos, therefore the data for the years 2016-2017 are not comparable.

The following graphs depict the evolution of the receipts (Graph 2), as well as the number of visitors by Museum and Archaeological Site (Graphs 3 and 4 respectively),

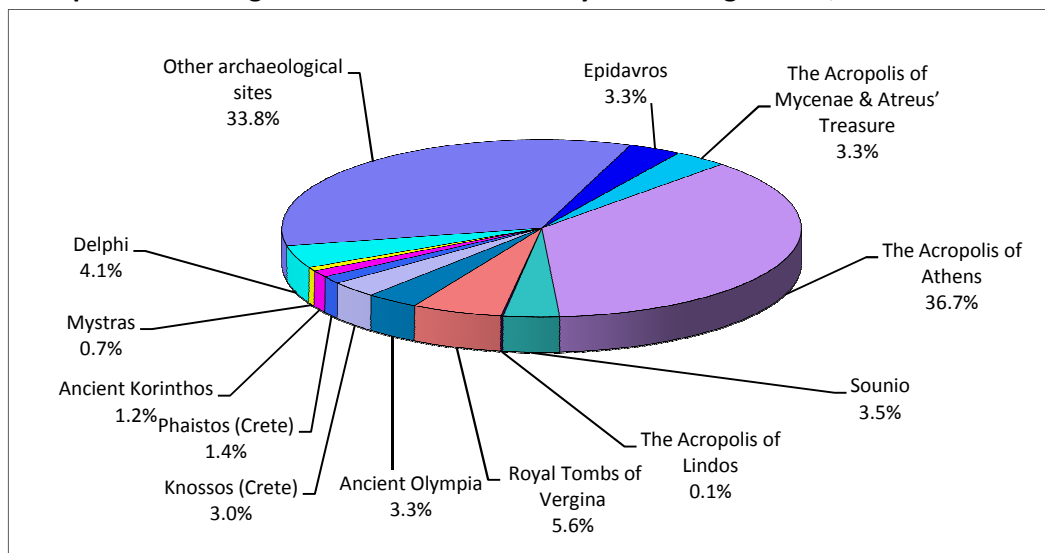
Graph 2: Receipts from Museums and Archaeological Sites (Jan 2013 – Dec 17)



Graph 3: Percentage distribution of Visitors by Museum, December 2017



Graph 4: Percentage distribution of Visitors by Archaeological site, December 2017



**TABLE 2: VISITORS OF MUSEUMS AND ARCHAEOLOGICAL SITES - TOTAL RECEIPTS
(2015, 2016 AND JANUARY- DECEMBER 2016 & 2017)**

I. VISITORS					
Museums and Archaeological sites	2015	2016	JANUARY- DECEMBER		change
			2016	2017	2017/2016
Total number of visitors (A+B)	14,725,895	14,080,639	14,080,639	16,510,878	17.3%
A. Museums (C+E)	4,405,842	4,515,966	4,515,966	5,191,781	15.0%
Acropolis Museum	1,510,615	1,406,096	1,406,096	1,593,362	13.3%
National Archaeological	476,754	447,093	447,093	545,555	22.0%
Ancient Olympia	135,972	124,136	124,136	145,118	16.9%
Palace of the Grand Master (Rhodes)	251,091	237,361	237,361	235,413	-0.8%
Herakleion Archaeological (Crete)	201,657	394,915	394,915	426,191	7.9%
White Tower	273,659	290,192	290,192	268,149	-7.6%
Delphi	205,369	166,091	166,091	211,827	27.5%
Other museums	1,350,725	1,450,082	1,450,082	1,766,166	21.8%
B. Archaeological Sites (D+F)	10,320,053	9,564,673	9,564,673	11,319,097	18.3%
Epidavros ⁽¹⁾	443,565	375,437	375,437	469,060	24.9%
The Acropolis of Mycenae & Atreus' Treasure	402,565	342,854	342,854	398,718	16.3%
The Acropolis of Athens ⁽²⁾	2,043,868	1,807,580	1,807,580	2,766,218	-
Sounio	236,285	222,800	222,800	259,709	16.6%
The Acropolis of Lindos	580,875	421,070	421,070	441,012	4.7%
Royal Tombs of Vergina	211,132	186,627	186,627	203,632	9.1%
Ancient Olympia	439,836	423,424	423,424	481,252	13.7%
Knossos (Crete)	632,288	611,455	611,455	634,710	3.8%
Phaistos (Crete)	94,689	77,071	77,071	95,182	23.5%
Ancient Korinthos ⁽¹⁾	141,490	153,307	153,307	191,836	25.1%
Mystras ⁽¹⁾	117,010	114,293	114,293	125,549	9.8%
Delphi	319,754	290,705	290,705	345,804	19.0%
Other archaeological sites	4,656,696	4,538,050	4,538,050	4,906,415	8.1%
II. VISITORS WHO PAID TICKET					
	2015	2016	JANUARY- DECEMBER		change
			2016	2017	2017/2016
Total number of visitors who paid ticket (C+D)	10,544,249	8,749,957	8,749,957	10,288,448	17.6%
C. Museums	2,867,641	2,406,665	2,406,665	2,831,466	17.7%
D. Archaeological sites	7,676,608	6,343,292	6,343,292	7,456,982	17.6%
III. VISITORS WITH FREE ADMISSION TICKETS					
	2015	2016	JANUARY- DECEMBER		change
			2016	2017	2017/2016
Total number of visitors with free admission ticket (E+F)	4,181,646	5,330,682	5,330,682	6,222,430	16.7%
E. Museums	1,538,201	2,109,301	2,109,301	2,360,315	11.9%
F. Archaeological sites	2,643,445	3,221,381	3,221,381	3,862,115	19.9%
IV. RECEIPTS (euros)					
	2015	2016	JANUARY- DECEMBER		change
			2016	2017	2017/2016
Total Receipts (G+H)	56,224,962,00	86,647,638,00	86,687,638,00	102,887,879,00	18.7%
G. Museums	12,385,213.00	13,448,464.00	13,488,464.00	16,175,121.00	19.9%
H. Archaeological sites	43,839,749.00	73,199,174.00	73,199,174.00	86,712,758.00	18.5%

(1) Flat rate ticket, valid both for the museum and the archaeological site

(2) From May 2017 onwards, the data for the number of tickets in the archaeological site of the Acropolis of Athens include the tickets of the Ancient Theatre of Dionysos, therefore the data for the years 2016-2017 are not comparable.

EXPLANATORY NOTES

Survey on Museums and Archaeological Sites Attendance	The Survey on Museums and Archaeological Sites Attendance has been producing results since 1970, The survey collects data from the Archaeological Receipts Fund (ARF) of the Ministry of Culture and Sports concerning the number of visitors and the receipts from the tickets sold in the Museums and Archaeological sites of the country. The corresponding data for the Acropolis Museum are available from December 2009 onwards.
Legal Framework	The survey is conducted since 1970 on a regular basis and it produces results on a monthly and yearly basis, in compliance with the Joint Ministerial Decision 15189/B379/73.

Reference Period 01/12/2017 to 31/12/2017.

Methodology and Definitions The Survey is conducted on a monthly basis from data collected from the Archaeological Receipts Fund (ARF) of the Ministry of Culture and Sports concerning on the number of visitors and the receipts from the tickets sold in the Museums and Archaeological sites of the country, ELSTAT tabulates the data on Museums and the Archaeological sites for the whole of the Country, by month and by year.

Information on ticket payment

- From January 2002 onwards, the number of Museums' visitors includes both the visitors who have bought a ticket and the visitors with free admission ticket, From 16-06-1996 onwards, the Museums and the Archaeological sites all over Greece have a paid admission for all the visitors, Greeks and foreigners, all over the year, except in the following days, which are free admission days:
- National Holidays (25th of March and 28th of October)
- The first Sunday every month during the five month period from 1 November to 31 March
- The 6th of March (in memory of Melina Merkouri)
- The 18th of April (International Monuments Day)
- The 18th of May (International Museums Day)
- The 5th of June (International Environment Day)
- The last weekend of September, annually (European Heritage Days)

Free admission tickets

The admission to Museums and Archaeological site is free for:

- Young people from EU-countries aged under 18 years, with current identification card to confirm their age,
- Students of Universities and of Higher and Technical Education Institutions or equivalent institutions of EU-countries, as well as of Tour Guide Training Institutes, with valid student identification card or International Student Identity Card (ISIC)
- Employees of the Hellenic Ministry of Culture, with valid professional identity card
- ICOM and ICOMOS cardholders
- Tour Guides with their current working identification card from the Ministry of Development
- Teachers accompanying pupils and students on primary, secondary and tertiary education institution tours
- Journalists with valid journalists' identification card
- Members of Associations and Societies of Friends of Museums and Archaeological Sites
- Official guests of the Greek Government, after relevant approval
- Escorts of blind persons and persons with disabilities
- Free admission cardholders
- Holders of the Culture Card

Number of flat rate tickets

From April 1999 onwards, in some museums and the nearby archaeological sites, in addition to the ordinary ticket, a new "flat rate ticket" was established, which is valid for both the museum and the nearby archaeological site. The total number of these flat rate tickets for **December 2017** was **9,251**.

More information on the Survey on Museums and Archaeological Sites Attendance and detailed time series are available on: <http://www.statistics.gr/en/statistics/-/publication/SCI21/>