



PRESS RELEASE

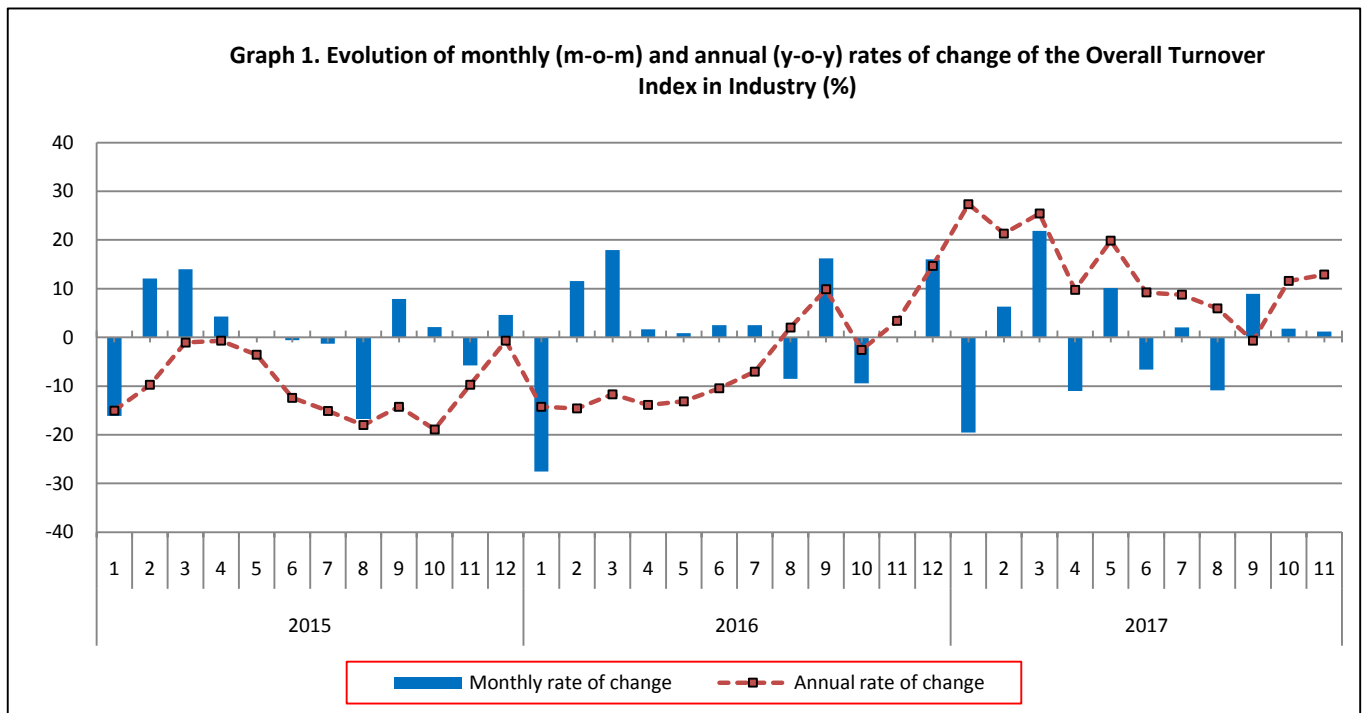
TURNOVER INDEX IN INDUSTRY: November 2017, y-o-y increase of 12.9%

The evolution of the Turnover Index in Industry with base year 2010=100.0 for November 2017, on the basis of provisional data, is as follows:

The Overall Turnover Index in Industry (both domestic and non-domestic market) in November 2017 recorded an increase of 12.9% compared with the corresponding index of November 2016. In November 2016, the corresponding annual rate of change of the Overall Turnover Index in Industry was 3.4% (Table 1).

The Overall Turnover Index in Industry in November 2017, compared with October 2017, recorded an increase of 1.2% (Table 6).

The average Overall Turnover Index in Industry for the 12-month period from December 2016 to November 2017 increased by 13.3%, compared with the corresponding index of the 12-month period from December 2015 to November 2016. In November 2016, the corresponding annual rate of change of the Overall Turnover Index in Industry was -6.3% (Table 13).



Information:

Economic and Short-Term Indices Division
Production Indices Section
Diamantaki Aikaterini, Karathanos Panagiotis
Tel: +30 213 135 2122, 213 135 2706
Fax: +30 213 135 2738
E-mail: a.diamantaki@statistics.gr, p.karathanos@statistics.gr

Evolution of the Overall Turnover Index in Industry

I. Annual changes of the Overall Turnover Index in Industry: November 2017/November 2016

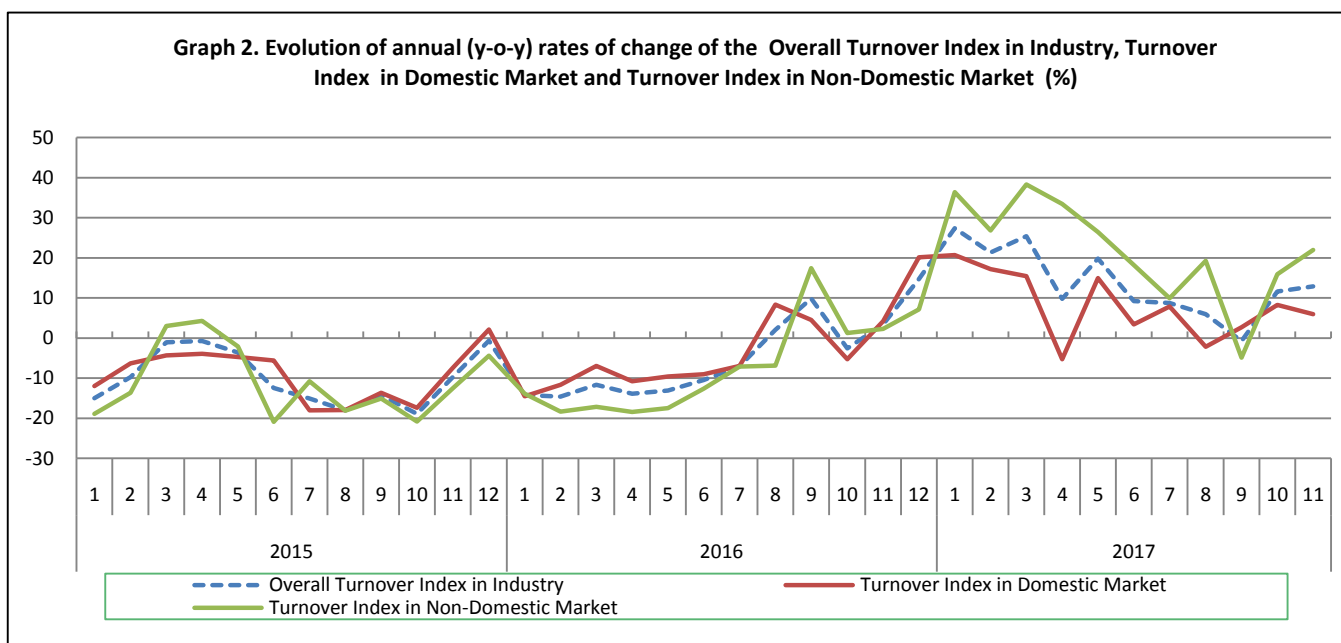
The 12.9% increase in the Overall Turnover Index in Industry in November 2017, compared with the corresponding index in November 2016, was due to the following:

1. Changes in the sub-indices of the industrial sections (Table 1):

- The Turnover Index in Mining and quarrying increased by 13.6%. The increase was the result of the annual change of the sub-index in the following 2-digit division: other mining and quarrying products.
- The Turnover Index in Manufacturing increased by 12.9%. The increase was the result of the annual changes of the sub-indices in the following 2-digit divisions: coke and refined petroleum products, basic pharmaceutical products and pharmaceutical preparations, basic metals, electrical equipment.

2. Changes in the sub-indices of the domestic and non-domestic market:

- The Turnover Index in Industry for the domestic market increased by 6.0% (Table 2).
- The Turnover Index in Industry for the non-domestic market increased by 22.0% (Table 3).



II. Annual changes of the Turnover Index in Industry in the Domestic Market: November 2017/November 2016

The 6.0% increase of the Turnover Index in Industry for the domestic market in November 2017, compared with November 2016, is due to the following annual changes in the sub-indices of the following industrial sections (Table 2):

- The Turnover Index in Manufacturing increased by 6.1%. The increase was the result of the annual changes of the sub-indices in the following 2-digit divisions: coke and refined petroleum products, basic metals, electrical equipment, machinery and equipment n. e. c.
- The Turnover Index in Mining and quarrying decreased by 0.9%. The decrease was the result of the annual change of the sub-index in the following 2-digit division: other mining and quarrying products.

III. Annual changes of the Turnover Index in Industry in the Non-Domestic Market: November 2017/November 2016

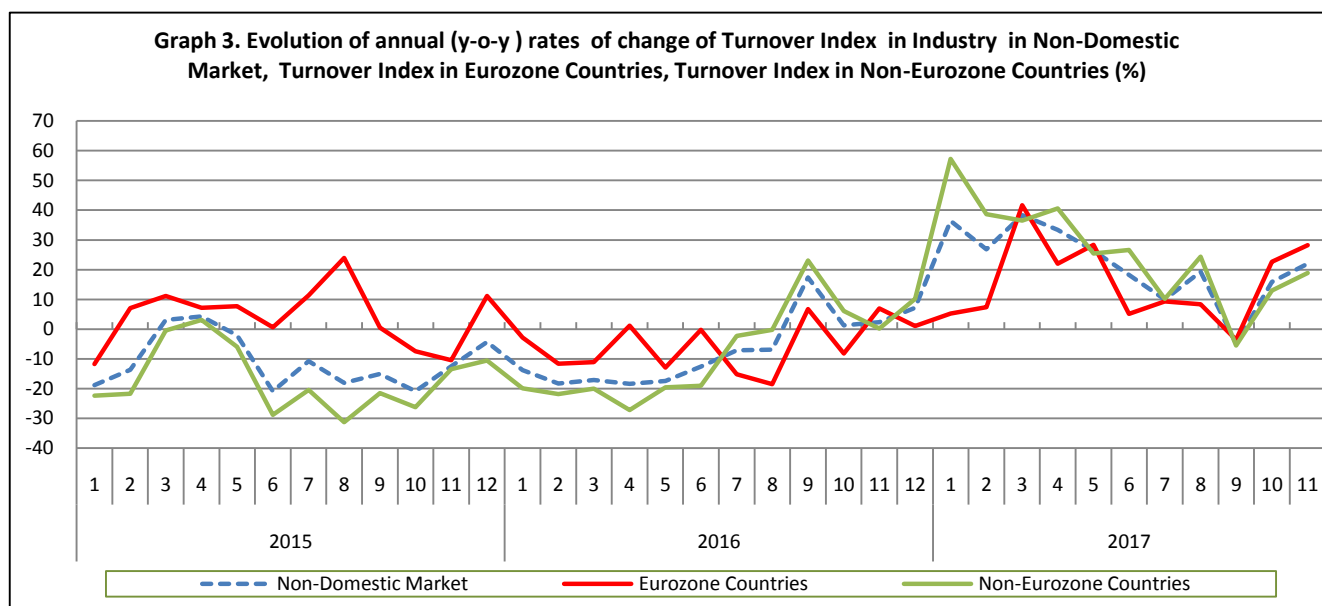
The 22.0% increase of the Turnover Index in Industry for the Non-Domestic market in November 2017, compared with November 2016, was due to the following:

1. Changes in the sub-indices of the industrial sections (Table 3):

- The Turnover Index in Mining and quarrying increased by 24.0%. The increase was the result of the annual change of the sub-index in the following 2-digit division: other mining and quarrying products
- The Turnover Index in Manufacturing increased by 21.9%. The increase was the result of the annual changes of the sub-indices in the following 2-digit divisions: coke and refined petroleum products, basic pharmaceutical products and pharmaceutical preparations, basic metals, electrical equipment.

2. Changes in the sub-indices for Eurozone and Non-Eurozone countries:

- The Turnover Index in Industry for Eurozone countries increased by 28.2% (Table 4).
- The Turnover Index in Industry for non-Eurozone countries increased by 18.9% (Table 5).



IV. Monthly changes of the Overall Turnover Index in Industry: November 2017/ October 2017

The 1.2% increase of the Overall Turnover Index in Industry in November 2017, compared with the corresponding index in October 2017, was due to the following:

1. Changes in the sub-indices of industrial sections (Table 6):

- The Turnover Index in Manufacturing increased by 1.5%.
- The Turnover Index in Mining and quarrying decreased by 11.7%.

2. Changes in the sub-indices of the domestic and non-domestic market:

- The Turnover Index in Industry for the non-domestic market increased by 4.6% (Table 8).
- The Turnover Index in Industry for the domestic market decreased by 1.7% (Table 7).

Table 1. Annual rates of change of the Turnover Index in Industry: Total Market

Base year: 2010=100.0

Code	Division	Weights	November			Rate of change (%)	
			2017*	2016	2015	2017/2016	2016/2015
OVERALL INDEX			100.08	88.64	85.75	12.9	3.4
B	MINING AND QUARRYING	100.00	110.62	97.39	91.69	13.6	6.2
05	Mining of coal and lignite	5.89	105.28	106.15	142.04	-0.8	-25.3
06	Extraction of crude petroleum and natural gas	6.90	0.00	0.00	0.00	-	-
07	Mining of metal ores	16.67	120.52	132.75	102.17	-9.2	29.9
08	Other mining and quarrying products	70.54	119.53	97.82	93.97	22.2	4.1
C	MANUFACTURING	100.00	99.90	88.50	85.65	12.9	3.3
10	Food	18.21	91.47	93.68	89.00	-2.4	5.3
11	Beverages	4.57	52.84	53.30	53.25	-0.9	0.1
12	Tobacco products	1.10	111.91	121.63	119.87	-8.0	1.5
13	Textiles	1.21	80.16	73.10	74.24	9.7	-1.5
14	Wearing apparel	1.39	58.39	54.06	57.13	8.0	-5.4
15	Leather and related products	0.28	33.92	43.83	43.30	-22.6	1.2
16	Wood and cork	0.72	49.55	48.15	49.53	2.9	-2.8
17	Paper and paper products	2.07	97.55	91.07	97.84	7.1	-6.9
18	Printing and recording services	1.21	48.17	54.07	57.40	-10.9	-5.8
19	Coke and refined petroleum products	33.96	118.36	94.17	94.65	25.7	-0.5
20	Chemicals and chemical products	4.97	91.12	83.87	91.02	8.6	-7.9
21	Basic pharmaceutical products and pharmaceutical preparations	2.64	122.67	110.40	97.24	11.1	13.5
22	Rubber and plastic products	3.26	102.33	100.66	102.97	1.7	-2.3
23	Other non-metallic mineral products	4.59	64.11	62.02	58.98	3.4	5.2
24	Basic metals	9.70	128.34	99.64	77.92	28.8	27.9
25	Fabricated metal products	3.25	70.69	81.92	67.86	-13.7	20.7
26	Computers, electronic and optical products	0.35	136.70	122.50	164.92	11.6	-25.7
27	Electrical equipment	2.43	90.88	80.60	80.37	12.8	0.3
28	Machinery and equipment n. e. c.	0.88	103.16	86.83	94.52	18.8	-8.1
29	Motor vehicles, trailers and semi-trailers	0.28	91.53	108.59	74.44	-15.7	45.9
30	Other transport equipment	0.43	86.46	105.46	119.75	-18.0	-11.9
31	Furniture	0.84	52.61	57.80	52.48	-9.0	10.1
32	Other manufactured goods	0.25	95.84	92.59	81.63	3.5	13.4
33	Repair and installation services of machinery and equipment	1.41	62.58	62.45	71.82	0.2	-13.1
MAIN INDUSTRIAL GROUPINGS							
1	Energy	33.61	117.92	93.89	94.46	25.6	-0.6
2	Intermediate goods	31.86	100.00	88.00	83.08	13.6	5.9
3	Capital goods	4.57	80.44	83.98	75.73	-4.2	10.9
4	Consumer Durables	1.53	61.93	62.38	72.06	-0.7	-13.4
5	Consumer Non-Durables	28.43	84.29	85.33	80.79	-1.2	5.6

* Provisional data

Note: The indices and the percentage changes are rounded up to two and one decimal figures, respectively, when published.

Table 2. Annual rates of change of the Turnover Index in Industry: Domestic Market

Base year: 2010=100.0

Code	Division	Weights	November			Rate of change (%)	
			2017*	2016	2015	2017/2016	2016/2015
OVERALL INDEX			77.02	72.68	69.75	6.0	4.2
B	MINING AND QUARRYING	100.00	68.40	69.00	78.27	-0.9	-11.8
05	Mining of coal and lignite	9.91	106.03	106.90	143.02	-0.8	-25.3
06	Extraction of crude petroleum and natural gas	11.69	0.00	0.00	0.00	-	-
07	Mining of metal ores	10.57	140.30	134.29	133.66	4.5	0.5
08	Other mining and quarrying products	67.83	63.51	65.20	73.69	-2.6	-11.5
C	MANUFACTURING	100.00	77.15	72.74	69.63	6.1	4.5
10	Food	22.06	83.69	85.58	82.19	-2.2	4.1
11	Beverages	6.16	49.40	50.22	50.67	-1.7	-0.9
12	Tobacco products	0.97	97.06	83.55	83.59	16.2	-0.1
13	Textiles	0.89	66.92	69.47	68.19	-3.7	1.9
14	Wearing apparel	1.02	60.16	59.45	61.10	1.2	-2.7
15	Leather and related products	0.34	36.64	42.88	44.33	-14.6	-3.3
16	Wood and cork	0.89	41.13	42.19	42.85	-2.5	-1.5
17	Paper and paper products	2.65	85.47	84.12	93.22	1.6	-9.8
18	Printing and recording services	1.72	44.79	49.94	53.05	-10.3	-5.9
19	Coke and refined petroleum products	31.51	84.15	77.25	70.49	8.9	9.6
20	Chemicals and chemical products	4.60	89.35	81.29	86.30	9.9	-5.8
21	Basic pharmaceutical products and pharmaceutical preparations	2.45	90.66	94.62	85.34	-4.2	10.9
22	Rubber and plastic products	3.01	84.38	82.92	88.64	1.8	-6.5
23	Other non-metallic mineral products	5.66	48.36	48.48	46.15	-0.3	5.1
24	Basic metals	5.72	106.04	66.44	53.16	59.6	25.0
25	Fabricated metal products	3.47	48.06	45.06	40.59	6.7	11.0
26	Computers, electronic and optical products	0.17	20.16	22.98	147.28	-12.3	-84.4
27	Electrical equipment	1.82	57.85	52.29	52.02	10.6	0.5
28	Machinery and equipment n. e. c.	0.77	53.07	44.41	49.26	19.5	-9.8
29	Motor vehicles, trailers and semi-trailers	0.27	100.62	132.11	84.59	-23.8	56.2
30	Other transport equipment	0.40	104.76	111.51	115.12	-6.1	-3.1
31	Furniture	1.15	42.00	48.46	47.47	-13.3	2.1
32	Other manufactured goods	0.27	62.50	57.04	53.13	9.6	7.4
33	Repair and installation services of machinery and equipment	2.03	62.58	62.45	71.82	0.2	-13.1
MAIN INDUSTRIAL GROUPINGS							
1	Energy	31.37	83.81	76.98	70.44	8.9	9.3
2	Intermediate goods	28.94	79.09	69.41	68.96	13.9	0.7
3	Capital goods	5.20	57.82	59.83	59.87	-3.4	-0.1
4	Consumer Durables	1.74	45.99	47.05	58.47	-2.3	-19.5
5	Consumer Non-Durables	32.75	73.41	74.87	71.96	-2.0	4.1

* Provisional data

Note: The indices and the percentage changes are rounded up to two and one decimal figures, respectively, when published.

Table 3. Annual rates of change of the Turnover Index in Industry: Non-Domestic Market

Base year: 2010=100.0

Code	Division	Weights	November			Rate of change (%)	
			2017*	2016	2015	2017/2016	2016/2015
OVERALL INDEX			151.58	124.30	121.48	22.0	2.3
B	MINING AND QUARRYING	100.00	171.56	138.36	111.06	24.0	24.6
05	Mining of coal and lignite	0.10	0.00	0.00	3.96	-	-100.0
06	Extraction of crude petroleum and natural gas ⁽¹⁾	0.00	-	-	-	-	-
07	Mining of metal ores	25.44	108.69	131.83	83.34	-17.6	58.2
08	Other mining and quarrying products	74.46	193.27	140.78	120.68	37.3	16.7
C	MANUFACTURING	100.00	151.13	123.99	121.72	21.9	1.9
10	Food	9.54	131.76	135.62	124.26	-2.9	9.2
11	Beverages	0.98	101.78	97.02	90.03	4.9	7.8
12	Tobacco products	1.38	135.32	181.70	177.10	-25.5	2.6
13	Textiles	1.93	93.85	76.85	80.50	22.1	-4.5
14	Wearing apparel	2.21	56.55	48.45	53.00	16.7	-8.6
15	Leather and related products	0.15	20.40	48.55	38.19	-58.0	27.1
16	Wood and cork	0.37	94.27	79.79	85.06	18.2	-6.2
17	Paper and paper products	0.77	191.63	145.16	133.80	32.0	8.5
18	Printing and recording services	0.07	226.79	272.64	287.32	-16.8	-5.1
19	Coke and refined petroleum products	39.47	179.90	124.60	138.10	44.4	-9.8
20	Chemicals and chemical products	5.82	94.27	88.47	99.42	6.6	-11.0
21	Basic pharmaceutical products and pharmaceutical preparations	3.07	180.02	138.66	118.58	29.8	16.9
22	Rubber and plastic products	3.82	134.27	132.21	128.47	1.6	2.9
23	Other non-metallic mineral products	2.17	156.83	141.76	134.52	10.6	5.4
24	Basic metals	18.67	143.73	122.55	95.01	17.3	29.0
25	Fabricated metal products	2.74	135.43	187.35	145.85	-27.7	28.5
26	Computers, electronic and optical products	0.74	198.56	175.32	174.28	13.3	0.6
27	Electrical equipment	3.80	126.42	111.07	110.89	13.8	0.2
28	Machinery and equipment n. e. c.	1.13	180.01	151.92	163.97	18.5	-7.4
29	Motor vehicles, trailers and semi-trailers	0.29	72.71	59.85	53.41	21.5	12.1
30	Other transport equipment	0.50	53.48	94.54	128.10	-43.4	-26.2
31	Furniture	0.17	219.23	204.49	131.21	7.2	55.9
32	Other manufactured goods	0.21	190.12	193.15	162.26	-1.6	19.0
33	Repair and installation services of machinery and equipment	0.00	-	-	-	-	-
MAIN INDUSTRIAL GROUPINGS							
1	Energy	38.60	179.89	124.60	138.10	44.4	-9.8
2	Intermediate goods	38.39	135.25	119.34	106.87	13.3	11.7
3	Capital goods	3.16	163.61	172.76	134.03	-5.3	28.9
4	Consumer Durables	1.06	121.19	119.37	122.60	1.5	-2.6
5	Consumer Non-Durables	18.79	126.55	125.94	115.06	0.5	9.5

* Provisional data

Note: The indices and the percentage changes are rounded up to two and one decimal figures, respectively, when published.

(1) The Index is not computed (base year value = 0).

Table 4. Annual rates of change of the Turnover Index in Industry: Eurozone Countries

Base year: 2010=100.0

Code	Sections and main groupings	November			Rate of change (%)	
		2017*	2016	2015	2017/2016	2016/2015
OVERALL INDEX		158.20	123.38	115.38	28.2	6.9
INDUSTRIAL SECTIONS						
B	MINING AND QUARRYING	166.94	159.82	138.58	4.5	15.3
C	MANUFACTURING	157.96	122.37	114.74	29.1	6.7
MAIN INDUSTRIAL GROUPINGS						
1	Energy	295.28	129.92	115.80	127.3	12.2
2	Intermediate goods	152.04	120.40	119.80	26.3	0.5
3	Capital goods	152.63	180.47	129.28	-15.4	39.6
4	Consumer Durables	124.97	130.20	94.88	-4.0	37.2
5	Consumer Non-Durables	119.90	119.40	108.34	0.4	10.2

* Provisional data

Table 5. Annual rates of change of the Turnover Index in Industry: Non-Eurozone Countries

Base year: 2010=100.0

Code	Sections and main groupings	November			Rate of change (%)	
		2017*	2016	2015	2017/2016	2016/2015
OVERALL INDEX		148.30	124.76	124.51	18.9	0.2
INDUSTRIAL SECTIONS						
B	MINING AND QUARRYING	174.73	123.61	92.15	41.4	34.1
C	MANUFACTURING	147.78	124.78	125.15	18.4	-0.3
MAIN INDUSTRIAL GROUPINGS						
1	Energy	166.58	123.98	140.67	34.4	-11.9
2	Intermediate goods	122.56	118.55	97.10	3.4	22.1
3	Capital goods	169.40	168.69	136.54	0.4	23.6
4	Consumer Durables	115.41	102.80	164.98	12.3	-37.7
5	Consumer Non-Durables	135.70	134.92	124.31	0.6	8.5

* Provisional data

Note: The indices and the percentage changes are rounded up to two and one decimal figures, respectively, when published.

Table 6. Monthly rate of change of the Turnover Index in Industry: Total Market

Base year: 2010=100.0

Code	Sections and main groupings	November 2017*	October 2017**	Rate of change (%) Nov. 2017/Oct. 2017
OVERALL INDEX		100.08	98.91	1.2
INDUSTRIAL SECTIONS				
B	MINING AND QUARRYING	110.62	125.22	-11.7
C	MANUFACTURING	99.90	98.47	1.5
MAIN INDUSTRIAL GROUPINGS				
1	Energy	117.92	107.29	9.9
2	Intermediate goods	100.00	107.41	-6.9
3	Capital goods	80.44	74.33	8.2
4	Consumer Durables	61.93	56.00	10.6
5	Consumer Non-Durables	84.29	85.77	-1.7

Table 7. Monthly rate of change of the Turnover Index in Industry: Domestic Market

Base year: 2010=100.0

Code	Sections and main groupings	November 2017*	October 2017**	Rate of change (%) Nov. 2017/Oct. 2017
OVERALL INDEX		77.02	78.32	-1.7
INDUSTRIAL SECTIONS				
B	MINING AND QUARRYING	68.40	70.78	-3.4
C	MANUFACTURING	77.15	78.43	-1.6
MAIN INDUSTRIAL GROUPINGS				
1	Energy	83.81	79.82	5.0
2	Intermediate goods	79.09	86.24	-8.3
3	Capital goods	57.82	55.77	3.7
4	Consumer Durables	45.99	42.15	9.1
5	Consumer Non-Durables	73.41	75.40	-2.6

Table 8. Monthly rate of change of the Turnover Index in Industry: Non-Domestic Market

Base year: 2010=100.0

Code	Sections and main groupings	November 2017*	October 2017**	Rate of change (%) Nov. 2017/Oct. 2017
OVERALL INDEX		151.58	144.92	4.6
INDUSTRIAL SECTIONS				
B	MINING AND QUARRYING	171.56	203.77	-15.8
C	MANUFACTURING	151.13	143.60	5.3
MAIN INDUSTRIAL GROUPINGS				
1	Energy	179.89	157.17	14.5
2	Intermediate goods	135.25	143.09	-5.5
3	Capital goods	163.61	142.54	14.8
4	Consumer Durables	121.19	107.50	12.7
5	Consumer Non-Durables	126.55	126.04	0.4

* Provisional data ** Revised data

Note: The indices and the percentage changes are rounded up to two and one decimal figures, respectively, when published.

Table 9. Monthly rate of change of the Turnover Index in Industry: Eurozone Countries

Base year: 2010=100.0

Code	Sections and main groupings	November 2017*	October 2017**	Rate of change (%) Nov. 2017/Oct. 2017
OVERALL INDEX		158.20	141.40	11.9
INDUSTRIAL SECTIONS				
B	MINING AND QUARRYING	166.94	145.64	14.6
C	MANUFACTURING	157.96	141.28	11.8
MAIN INDUSTRIAL GROUPINGS				
1	Energy	295.28	155.05	90.4
2	Intermediate goods	152.04	154.39	-1.5
3	Capital goods	152.63	151.37	0.8
4	Consumer Durables	124.97	102.54	21.9
5	Consumer Non-Durables	119.90	118.00	1.6

* Provisional data **Revised data

Table 10. Monthly rate of change of the Turnover Index in Industry: Non-Eurozone Countries

Base year: 2010=100.0

Code	Sections and main groupings	November 2017*	October 2017**	Rate of change (%) Nov. 2017/Oct. 2017
OVERALL INDEX		148.30	146.66	1.1
INDUSTRIAL SECTIONS				
B	MINING AND QUARRYING	174.73	243.70	-28.3
C	MANUFACTURING	147.78	144.74	2.1
MAIN INDUSTRIAL GROUPINGS				
1	Energy	166.58	157.41	5.8
2	Intermediate goods	122.56	134.55	-8.9
3	Capital goods	169.40	137.88	22.9
4	Consumer Durables	115.41	115.08	0.3
5	Consumer Non-Durables	135.70	137.08	-1.0

* Provisional data ** Revised data

Note: The indices and the percentage changes are rounded up to two and one decimal figures, respectively, when published.

Table 11. Evolution of the Turnover Index in Industry (y-o-y changes): Total Market

Base year: 2010=100.0

Year and month	Overall Index (Total Market)		Turnover Index in Industry for the Domestic Market		Turnover Index in Industry for the Non-Domestic Market		
	Index	Annual rate of change (%)	Index	Annual rate of change (%)	Index	Annual rate of change (%)	
2016:	11	88.64	3.4	72.68	4.2	124.30	2.3
	12	102.86	14.7	90.82	20.1	129.77	7.1
2017 **:	1	82.74	27.4	65.39	20.7	121.50	36.4
	2	87.94	21.3	70.45	17.2	127.03	26.9
	3	107.20	25.4	80.62	15.4	166.59	38.3
	4	95.37	9.8	72.74	-5.3	145.92	33.4
	5	105.03	19.8	83.64	15.0	152.84	26.4
	6	98.10	9.2	81.61	3.4	134.93	18.2
	7	100.10	8.8	83.22	7.9	137.82	9.9
	8	89.23	6.0	74.07	-2.2	123.11	19.3
	9	97.19	-0.7	80.57	2.7	134.34	-4.9
	10	98.91	11.6	78.32	8.3	144.92	15.9
	11*	100.08	12.9	77.02	6.0	151.58	22.0

*Provisional data ** Revised data. The indices of the current year are revised after the inclusion of additional data from the enterprises.

Table 12. Evolution of the Turnover Index in Industry (y-o-y changes): Non-Domestic Market

Base year: 2010=100.0

Year and month	Overall Index (Non-Domestic Market)		Turnover Index in Industry for Eurozone Countries		Turnover Index in Industry for Non-Eurozone Countries		
	Index	Annual rate of change (%)	Index	Annual rate of change (%)	Index	Annual rate of change (%)	
2016:	11	124.30	2.3	123.38	6.9	124.76	0.2
	12	129.77	7.1	121.94	1.0	133.65	10.2
2017**:	1	121.50	36.4	113.97	5.3	125.23	57.3
	2	127.03	26.9	122.62	7.4	129.21	38.7
	3	166.59	38.3	180.73	41.7	159.57	36.5
	4	145.92	33.4	154.97	22.0	141.43	40.6
	5	152.84	26.4	154.66	28.3	151.95	25.5
	6	134.93	18.2	141.74	5.1	131.56	26.6
	7	137.82	9.9	143.30	9.3	135.10	10.2
	8	123.11	19.3	107.09	8.3	131.05	24.4
	9	134.34	-4.9	129.59	-3.6	136.69	-5.5
	10	144.92	15.9	141.40	22.6	146.66	12.9
	11*	151.58	22.0	158.20	28.2	148.30	18.9

*Provisional data ** Revised data. The indices of the current year are revised after the inclusion of additional data from the enterprises.

Note: The indices and the percentage changes are rounded up to two and one decimal figures, respectively, when published.

Table 13. Average indices and rates of change (%) of the 12-month periods of Turnover Index in Industry: Total Market

Base year: 2010=100.0

Code	Division	Average Indices of 12-month periods			Rate of change (%) 2017/2016	Rate of change (%) 2016/2015
		Dec. 2016- Nov. 2017*	Dec. 2015- Nov. 2016	Dec. 2014- Nov. 2015		
	OVERALL INDEX	97.06	85.70	91.43	13.3	-6.3
B	MINING AND QUARRYING	105.49	89.26	88.31	18.2	1.1
05	Mining of coal and lignite	120.16	64.07	167.42	87.5	-61.7
06	Extraction of crude petroleum and natural gas	-	-	-	-	-
07	Mining of metal ores	127.58	123.60	108.60	3.2	13.8
08	Other mining and quarrying products	109.36	91.96	85.55	18.9	7.5
C	MANUFACTURING	96.92	85.64	91.48	13.2	-6.4
10	Food	93.01	92.99	95.48	0.0	-2.6
11	Beverages	82.76	82.52	80.41	0.3	2.6
12	Tobacco products	115.52	125.01	123.03	-7.6	1.6
13	Textiles	72.97	67.62	66.10	7.9	2.3
14	Wearing apparel	48.76	50.48	52.28	-3.4	-3.4
15	Leather and related products	37.67	40.98	35.68	-8.1	14.9
16	Wood and cork	45.31	43.30	42.28	4.6	2.4
17	Paper and paper products	94.97	92.20	92.95	3.0	-0.8
18	Printing and recording services	47.13	54.09	54.82	-12.9	-1.3
19	Coke and refined petroleum products	110.10	86.97	102.76	26.6	-15.4
20	Chemicals and chemical products	99.08	95.24	94.95	4.0	0.3
21	Basic pharmaceutical products and pharmaceutical preparations	111.97	104.16	97.85	7.5	6.5
22	Rubber and plastic products	103.88	100.59	105.10	3.3	-4.3
23	Other non-metallic mineral products	61.17	58.90	54.94	3.9	7.2
24	Basic metals	112.19	84.78	92.00	32.3	-7.9
25	Fabricated metal products	83.90	80.95	75.03	3.6	7.9
26	Computers, electronic and optical products	139.37	135.80	125.23	2.6	8.4
27	Electrical equipment	83.49	79.45	74.86	5.1	6.1
28	Machinery and equipment n. e. c.	86.09	82.79	86.14	4.0	-3.9
29	Motor vehicles, trailers and semi-trailers	92.95	69.44	67.74	33.9	2.5
30	Other transport equipment	78.39	107.70	91.37	-27.2	17.9
31	Furniture	50.32	52.54	47.98	-4.2	9.5
32	Other manufactured goods	95.57	90.12	83.79	6.1	7.6
33	Repair and installation services of machinery and equipment	57.41	52.55	59.18	9.3	-11.2
	MAIN INDUSTRIAL GROUPINGS					
1	Energy	109.75	86.61	102.60	26.7	-15.6
2	Intermediate goods	95.08	84.45	86.15	12.6	-2.0
3	Capital goods	75.26	72.35	69.95	4.0	3.4
4	Consumer Durables	59.91	61.63	57.66	-2.8	6.9
5	Consumer Non-Durables	89.81	89.46	89.42	0.4	0.1

*Provisional data

Note: The indices and the percentage changes are rounded up to two and one decimal figures, respectively, when published.

METHODOLOGICAL NOTES

Generally	The Turnover Index is compiled since January 2006.
Purpose of the index	The purpose of this index is to measure the monthly activity of the industrial sector in terms of value. Turnover comprises the totals invoiced (without VAT) by the observation units during the reference period and corresponds to the market sales of goods or services supplied to third parties. The purposes and the characteristics of the Turnover Index apply, as well, to the indices for the distinction between domestic and non-domestic turnover.
Legal basis	The compilation and publication of the Turnover Index is based on the framework of requirements of Council Regulation (EC) No 1165/98 concerning short-term statistics (STS-R), as well as Regulation (EC) No 1158/05 of the European Parliament and Council amending Council Regulation (EC) No 1165/98. Furthermore, this index is governed by Regulation (EC) No 1893/2006 of the European Parliament and of the Council, by Commission Regulation (EC) No 656/2007 and by Regulation (EC) No 451/2008 of the Council.
Reference period	Month.
Base year	2010=100.0.
Revision	The latest revision of the Turnover Index in Industry (base year 2010=100.0) took place in the framework of Council Regulation (EC) No 1165/98 concerning short-term statistics. In accordance with this regulation the index is revised every five years, in years ending in 0 or 5.
Statistical classifications	At the level of categories of economic activities, the classification of NACE Rev. 2 was used (Regulation No 1893/2006), while at the level of main industrial groups, the allocation of two-digit and three-digit NACE Rev. 2 headings to categories of aggregate classification was used, in accordance with Commission Regulation No 656/2007. At product level, the Eurostat classification CPA 2008 was used, pursuant to Council Regulation No 451/2008.
Geographical coverage	The Index covers the whole Country.
Coverage of economic activities	The Turnover Index in Industry covers the whole country and is compiled for all activities listed in Sections C (mining and quarrying) and D (manufacturing) of the NACE Rev.2 classification.
Computation of the Index	The Turnover Index in Industry is a fixed base index. This index is calculated at a first stage at the four-digit level of economic activity and subsequently, with the implementation of appropriate weighting coefficients, the index is calculated at higher levels (three-level, two-level and one-level of economic activity) or at the level of Main Industrial Groupings (MIGs).
Publication of data	The Turnover Index in Industry (2010=100.0) is released since November 2014 with September 2014 as first reference month. Data with base year 2010=100.0 are available from January 2000 onwards.
References	More information about the methodology concerning the compilation and calculation of the index and for the time series is available on the website of the Hellenic Statistical Authority (ELSTAT) (http://www.statistics.gr/en/statistics/-/publication/DKT24/).