



PRESS RELEASE

Turnover indices in Transport Sector: 3rd Quarter 2017

The Hellenic Statistical Authority (ELSTAT) announces the Turnover Indices in Transport Sector. Specifically:

Year on Year growth rates

- The Turnover Index in **land transport and transport via pipelines** in the 3rd quarter 2017 as compared to the 3rd quarter 2016 increased by 12.9%, while the increase for the corresponding period of 2016 compared to 2015 was 2.7% (Table 1, Chart 1).
- The Turnover Index in **water transport** in the 3rd quarter 2016 as compared to the 3rd quarter 2016 decreased by 10.2%, while the decrease for the corresponding period of 2016 compared to 2015 was 2.2% (Table 1, Chart 2).
- The Turnover Index in **air transport** in the 3rd quarter 2017 as compared to the 3rd quarter 2016 increased by 6.8%, while for the corresponding period of 2016 compared to 2015 increased by 7.4% (Table 2, Chart 3).
- The Turnover Index in **warehousing and support activities for transportation** in the 3rd quarter 2017 as compared to the 3rd quarter 2016 increased by 7.7%, while for the corresponding period of 2016 compared to 2015 increased by 17.6% (Table 2, Chart 4).
- The Turnover Index in **travel agency, tour operator reservation service and related activities** in the 3rd quarter 2017 as compared to the 3rd quarter 2016 increased by 13.3%, while for the corresponding period of 2016 compared to 2015 increased by 1.4% (Table 3, Chart 5).

Information

Trade and Services Statistics Division

Transports, Communications and Mass Media Section

Sideri Spiridoula, Dalli Argiro, tel. (+30) 213 135 2056, 2499 (divisions 49,51,52,79)

Likou Anastasia, tel. (+30) 213 135 2275 (division 50)

Fax: (+30) 213 1352398

E-mail: transport@statistics.gr

Quarter on Quarter growth rates

- The Turnover Index in **land transport and transport via pipelines** in the 3rd quarter 2017 as compared to the 2nd quarter 2017 increased by 1.5%, while the decrease for the corresponding period of 2016 was 0.6%(Table 1,Chart 1).
- The Turnover Index in **water transport** in the 3rd quarter 2017 as compared to the 2nd quarter 2017 increased by 55.5%, while the increase for the corresponding period of 2016 was 54.2% (Table 1, Chart 2).
- The Turnover Index in **air transport** in the 3rd quarter 2017 as compared to the 2nd quarter 2017 increased by 47.5%, while the increase for the corresponding period of 2016 was 61.0% (Table 2, Chart 3).
- The Turnover Index in **warehousing and support activities for transportation**, in the 3rd quarter 2017 as compared to the 2nd quarter 2017 increased by 2.2%, while the increase for the corresponding period of 2016 was 4.3% (Table 2, Chart 4).
- The Turnover Index in **travel agency, tour operator reservation service and related activities**, in the 3rd quarter 2017 as compared to the 2nd quarter 2017 increased by 61.4%, while the increase for the corresponding period of 2016 was 51.8% (Table 3, Chart 5).

The tables and the graphs that follow present the evolution of the indices from 2010 onwards.

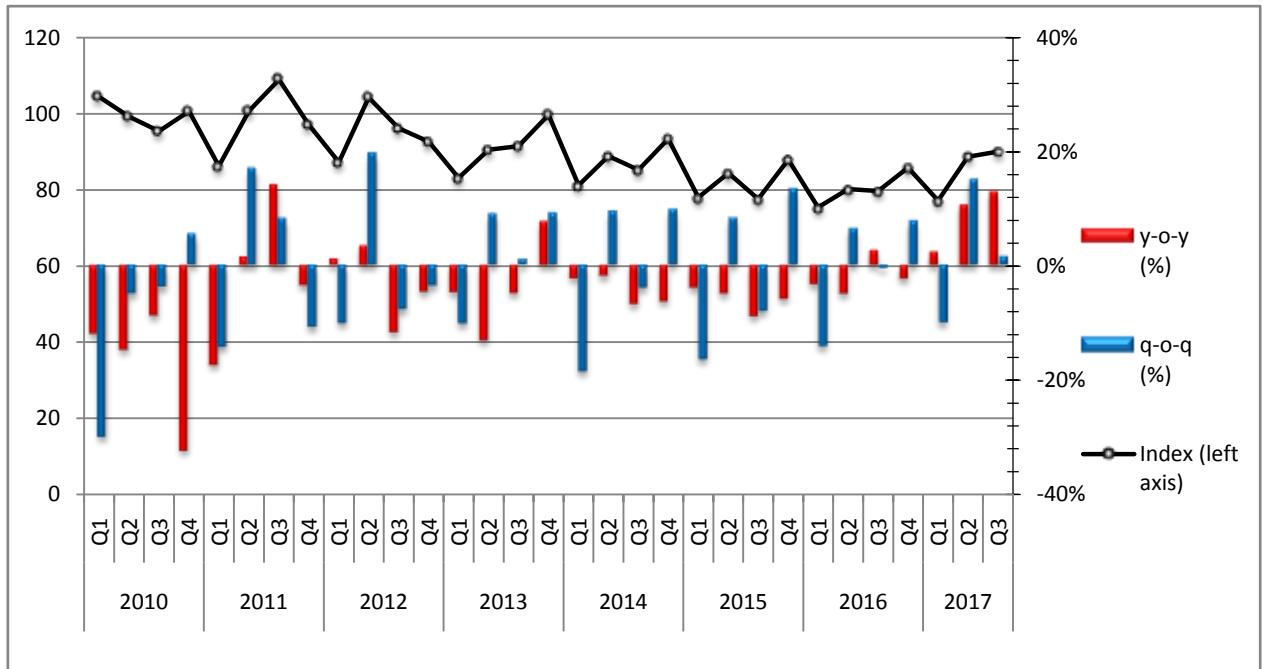
Table 1. Turnover Indexes in Land Transport via Pipelines (div 49 Nace rev.2) and in Water Transport (div 50 Nace rev.2)

Base Year: 2010=100

Year	Quarter	Index (div 49)	y-o-y change	q-o-q change	Index (div 50)	y-o-y change	q-o-q change
2010	Q1	104.5	-12.0%	-29.9%	71.7	-2.7%	-7.7%
	Q2	99.3	-14.8%	-5.0%	104.8	-6.2%	46.2%
	Q3	95.5	-8.8%	-3.8%	152.5	-12.6%	45.5%
	Q4	100.7	-32.4%	5.4%	71.0	-8.6%	-53.4%
	Average Mean	100.0	-18.2%		100.0	-8.6%	
2011	Q1	86.3	-17.4%	-14.3%	70.9	-1.1%	-0.1%
	Q2	100.8	1.5%	16.8%	95.7	-8.7%	35.0%
	Q3	109.0	14.1%	8.1%	157.1	3.0%	64.2%
	Q4	97.2	-3.5%	-10.8%	65.8	-7.3%	-58.1%
	Average Mean	98.3	-1.7%		97.4	-2.6%	
2012	Q1	87.3	1.2%	-10.2%	61.1	-13.8%	-7.1%
	Q2	104.3	3.5%	19.5%	81.8	-14.5%	33.9%
	Q3	96.2	-11.7%	-7.8%	124.9	-20.5%	52.7%
	Q4	92.7	-4.6%	-3.6%	61.9	-5.9%	-50.4%
	Average Mean	95.1	-3.3%		82.4	-15.4%	
2013	Q1	83.2	-4.7%	-10.2%	54.8	-10.3%	-11.5%
	Q2	90.6	-13.1%	8.9%	75.8	-7.3%	38.3%
	Q3	91.5	-4.9%	1.0%	117.5	-5.9%	55.0%
	Q4	99.8	7.7%	9.1%	57.2	-7.6%	-51.3%
	Average Mean	91.3	-4.0%		76.3	-7.4%	
2014	Q1	81.3	-2.3%	-18.5%	44.5	-18.8%	-22.2%
	Q2	88.9	-1.9%	9.3%	67.4	-11.1%	51.5%
	Q3	85.3	-6.8%	-4.0%	111.0	-5.5%	64.7%
	Q4	93.5	-6.3%	9.6%	57.6	0.7%	-48.1%
	Average Mean	87.3	-4.4%		70.1	-8.1%	
2015	Q1	78.1	-3.9%	-16.5%	42.3	-4.9%	-26.6%
	Q2	84.5	-4.9%	8.2%	69.1	2.5%	63.4%
	Q3	77.7	-8.9%	-8.0%	102.7	-7.5%	48.6%
	Q4	88.0	-5.9%	13.3%	51.3	-10.9%	-50.0%
	Average Mean	82.1	-6.0%		66.4	-5.3%	
2016	Q1	75.5	-3.3%	-14.2%	42.3	0.0%	-17.5%
	Q2	80.3	-5.0%	6.4%	65.1	-5.8%	53.9%
	Q3	79.8	2.7%	-0.6%	100.4	-2.2%	54.2%
	Q4	85.9	-2.4%	7.7%	45.4	-11.5%	-54.8%
	Average Mean	80.4	-2.1%		63.3	-4.6%	
2017	Q1	77.3	2.4%	-10.0%	36.7	-13.2%	-19.2%
	Q2	88.8*	10.6%	14.9%	58.0*	-10.9%	58.0%
	Q3	90.1	12.9%	1.5%	90.2	-10.2%	55.5%

* Revised data

Graph 1. Evolution of Turnover Index in Land Transport and Transport via Pipelines - div 49 Nace rev.2 (2010=100,0)



Graph 2. Evolution of Turnover Index in Water Transport - div 50 Nace rev.2 (2010=100,0)

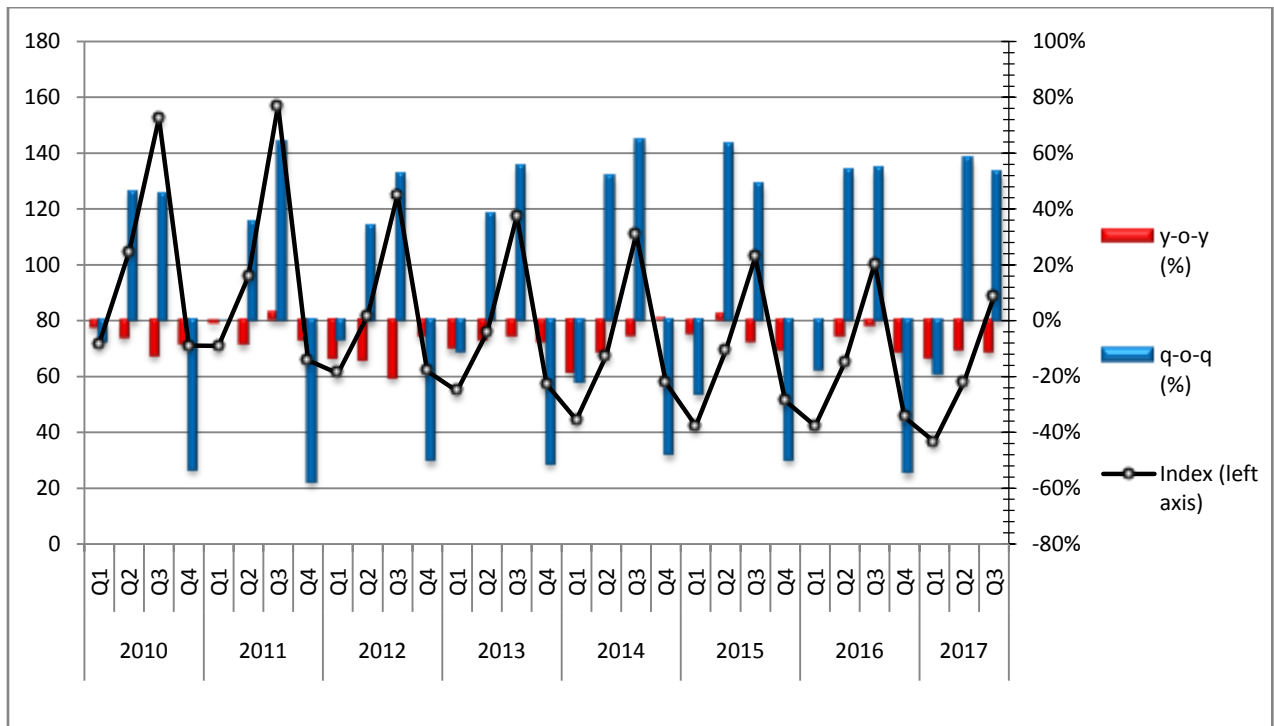


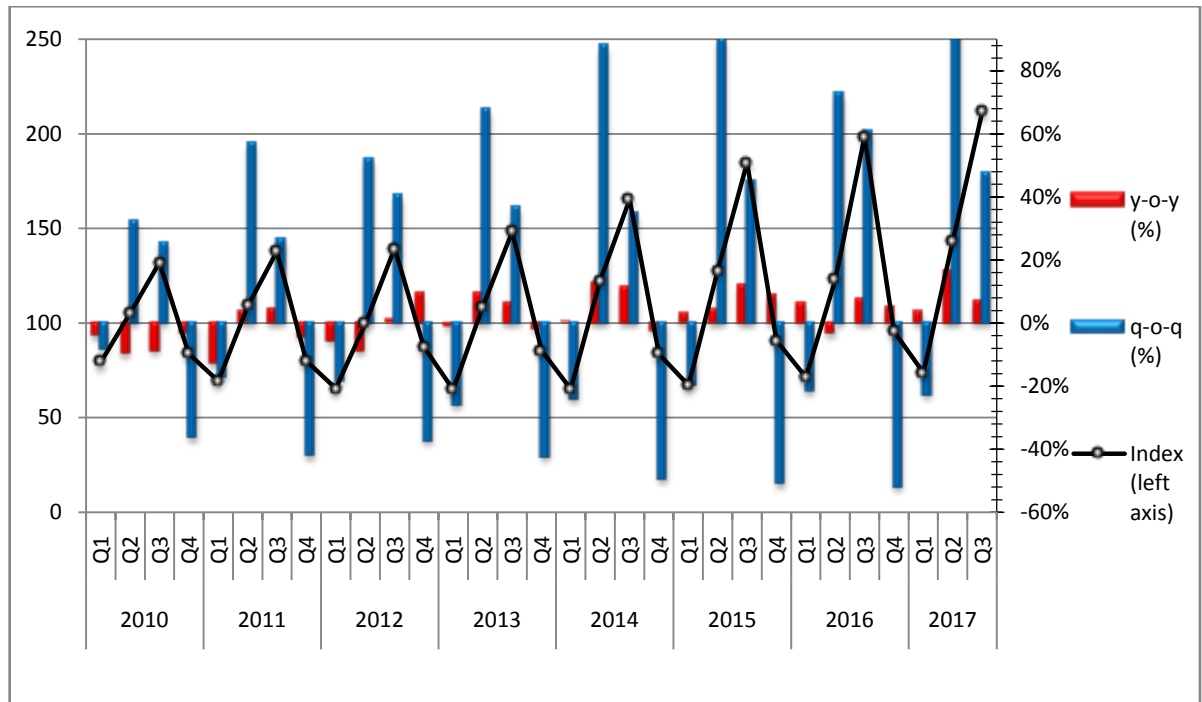
Table2. Turnover Indexes in Air Transport (div 51 Nace rev.2) and in Warehousing and Support Activities for Transportation (div 52 Nace rev.2)

Base Year: 2010=100

Year	Quarter	Index (div 51)	y-o-y change	q-o-q change	Index (div 52)	y-o-y change	q-o-q change
2010	Q1	79.3	-3.9%	-8.6%	96.8	-4.5%	-19.0%
	Q2	105.0	-9.7%	32.4%	107.8	-6.5%	11.4%
	Q3	131.9	-8.7%	25.6%	93.5	-16.7%	-13.3%
	Q4	83.8	-3.5%	-36.5%	101.9	-14.7%	9.0%
	Average Mean	100.0	-7.0%		100.0	10.8%	
2011	Q1	69.4	-12.5%	-17.2%	85.7	-11.5%	-15.9%
	Q2	109.0	3.8%	57.1%	92.7	-14.0%	8.2%
	Q3	137.9	4.5%	26.5%	97.1	3.9%	4.7%
	Q4	80.0	-4.5%	-42.0%	92.9	-8.8%	-4.3%
	Average Mean	99.1	-0.9%		92.1	-7.9%	
2012	Q1	65.5	-5.6%	-18.1%	71.4	-16.7%	-23.1%
	Q2	99.4	-8.8%	51.8%	93.9	1.3%	31.5%
	Q3	139.5	1.2%	40.3%	93.8	-3.4%	-0.1%
	Q4	87.5	9.4%	-37.3%	91.7	-1.3%	-2.2%
	Average Mean	98.0	-1.1%		87.7	-4.8%	
2013	Q1	64.8	-1.1%	-25.9%	70.0	-2.0%	-23.7%
	Q2	108.6	9.3%	67.6%	84.8	-9.7%	21.1%
	Q3	148.2	6.2%	36.5%	86.0	-8.3%	1.4%
	Q4	85.6	-2.2%	-42.2%	85.4	-6.9%	-0.7%
	Average Mean	101.8	3.9%		81.6	-7.0%	
2014	Q1	65.1	0.5%	-23.9%	74.2	6.0%	-13.1%
	Q2	122.4	12.7%	88.0%	86.4	1.9%	16.4%
	Q3	165.2	11.5%	35.0%	89.1	3.6%	3.1%
	Q4	83.5	-2.5%	-49.5%	94.3	10.4%	5.8%
	Average Mean	109.1	7.2%		86.0	5.4%	
2015	Q1	67.1	3.1%	-19.6%	81.2	9.4%	-13.9%
	Q2	127.6	4.2%	90.2%	90.4	4.6%	11.3%
	Q3	184.7	11.8%	44.7%	85.9	-3.6%	-5.0%
	Q4	90.7	8.6%	-50.9%	95.2	1.0%	10.8%
	Average Mean	117.5	7.7%		88.2	2.6%	
2016	Q1	71.3	6.3%	-21.4%	86.5	6.5%	-9.1%
	Q2	123.2	-3.4%	72.8%	96.8	7.1%	11.9%
	Q3	198.4	7.4%	61.0%	101.0	17.6%	4.3%
	Q4	95.5	5.3%	-51.9%	95.5	0.3%	-5.4%
	Average Mean	122.1	3.9%		95.0	7.7%	
2017	Q1	73.8	3.5%	-22.7%	88.9	2.8%	-6.9%
	Q2	143.6*	16.6%	94.6%	106.5	10.0%	19.8%
	Q3	211.8	6.8%	47.5%	108.8	7.7%	2.2%

* Revised data

Graph 3. Evolution of Turnover Index in air Transport - div 51 Nace rev.2 (2010=100,0)



Graph 4. Evolution of Turnover Index in Warehousing and Support Activities for Transportation - div 52 Nace rev.2 (2010=100,0)

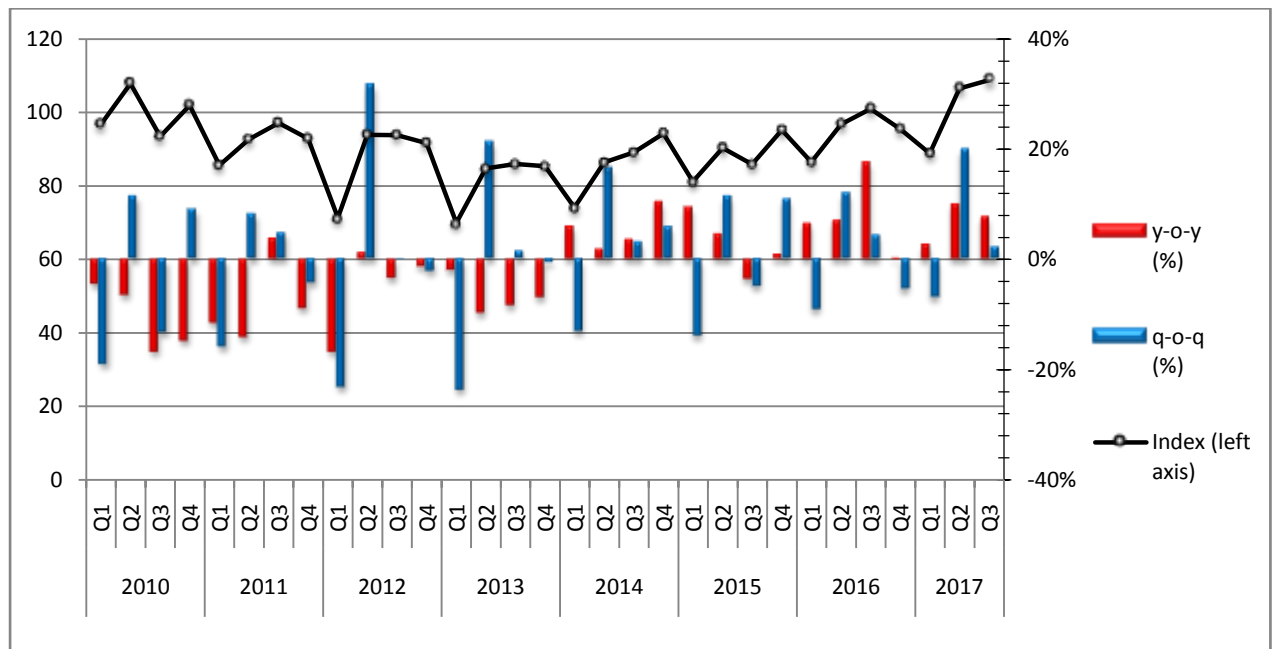


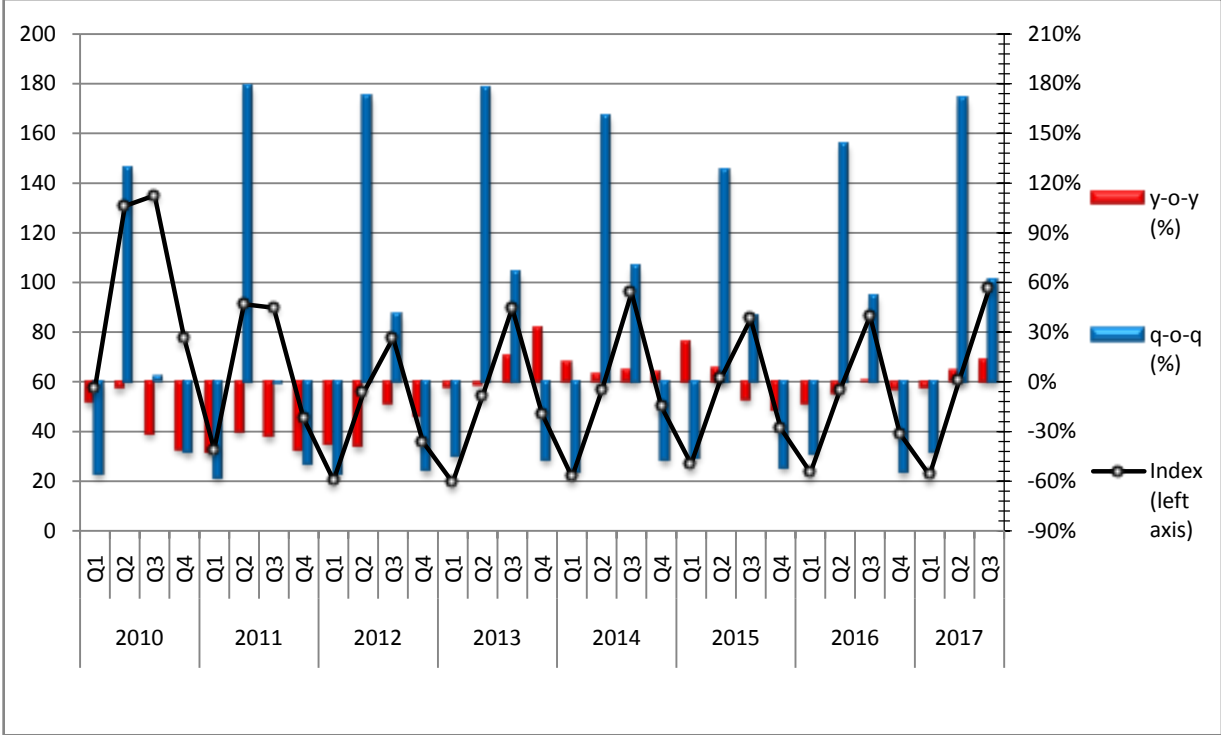
Table 3. Turnover Index in Travel Agency, Tour Operator Reservation Service and Related Activities (div. 79 Nace rev. 2)

Base Year: 2010=100

Year	Quarter	Index (div 79)	y-o-y change	q-o-q change
2010	Q1	57.1	-12.7%	-56.2%
	Q2	130.8	-4.5%	129.1%
	Q3	135.0	-31.5%	3.2%
	Q4	77.2	-40.8%	-42.8%
	<i>Average Mean</i>	100.0	-24.5%	
2011	Q1	32.7	-42.7%	-57.6%
	Q2	91.2	-30.3%	178.9%
	Q3	89.8	-33.5%	-1.5%
	Q4	45.4	-41.2%	-49.4%
	<i>Average Mean</i>	64.8	-35.2%	
2012	Q1	20.3	-37.9%	-55.3%
	Q2	55.4	-39.3%	172.9%
	Q3	77.7	-13.5%	40.3%
	Q4	35.8	-21.1%	-53.9%
	<i>Average Mean</i>	47.3	-27.0%	
2013	Q1	19.5	-3.9%	-45.5%
	Q2	54.1	-2.3%	177.4%
	Q3	89.7	15.4%	65.8%
	Q4	47.2	31.8%	-47.4%
	<i>Average Mean</i>	52.6	11.2%	
2014	Q1	21.7	11.3%	-54.0%
	Q2	56.6	4.6%	160.8%
	Q3	95.8	6.8%	69.3%
	Q4	50.0	5.9%	-47.8%
	<i>Average Mean</i>	56.0	6.5%	
2015	Q1	26.9	24.0%	-46.2%
	Q2	61.3	8.3%	127.9%
	Q3	85.3	-11.0%	39.2%
	Q4	41.2	-17.6%	-51.7%
	<i>Average Mean</i>	53.7	-4.1%	
2016	Q1	23.4	-13.0%	-43.2%
	Q2	57.0	-7.0%	143.6%
	Q3	86.5	1.4%	51.8%
	Q4	39.2	-4.9%	-54.7%
	<i>Average Mean</i>	51.5	-4.0%	
2017	Q1	22.4	-4.3%	-42.9%
	Q2	60.7*	6.5%	171.0%
	Q3	98.0	13.3%	61.4%

* Revised data

Graph 5. Evolution of Turnover Index in Travel Agency, Tour Operator Reservation Service and Related Activities - div. 79 Nace rev. 2 (2010=100,0)



EXPLANATORY NOTES

Turnover indices in Transport sector The turnover indices in services are important business indicators, which show the evolution of the services market. The purpose of these indices is to estimate the activity of the surveyed sector in value terms. Turnover comprises the totals invoiced by the observation unit during the reference period (quarter) and corresponds to the market sales of goods and services supplied to third parties. Subsidies on goods or services are also included. Turnover excludes VAT and other similar deductible taxes directly linked to turnover, as well as all duties and taxes on the goods or services invoiced by the observation unit. Income classified as other operating income, financial income and extraordinary income in company accounts is also excluded from turnover.

Legal basis The Turnover indices in Transport Sector is compiled on a quarterly basis in compliance with Council Regulation (EC) No 1165/98 concerning short-term statistics as well as pursuant to the requirements Regulation (EC) 1158/2005 of the European Parliament and Council amending the Council Regulation (EC) No 1165/98.

Reference Period 1st of July 2017-30th of September 2017

New Base Year 2010=100,0

Revision The Turnover Indices in Transport Sector have been revised with new base year 2010=100.0.

The revision was carried out in the framework agreement of the Member-States of the EU and is obligatory for reasons of comparability. These indicators are revised every five years and specifically in years ending in "0" and "5".

Coverage The compilation of these indices comprises enterprises with year turnovers equal or higher than 250.000 euro, represented by a sample of 300 enterprises covering the total of the country.

Methodology The Turnover Indices in Transport Sector cover the whole country and are compiled for divisions 49 – land transport / transport via pipelines, 50 – water transport, 51 – air transport, 52 – warehousing and support activities for transportation and 79 - travel agency, tour operator reservation service and related activities of NACE – Rev.2. statistical classification.

The turnover indices in Transport sector are estimated by applying the forward chaining technique. In a first stage, the floating base index is calculated by comparing the estimated turnover value of the current quarter (on the basis of a sample of enterprises) with the corresponding value of the previous quarter. The fixed index of any two-digit division of business activity for the current quarter results from the multiplication of the floating base index by the fixed index of the previous quarter.