



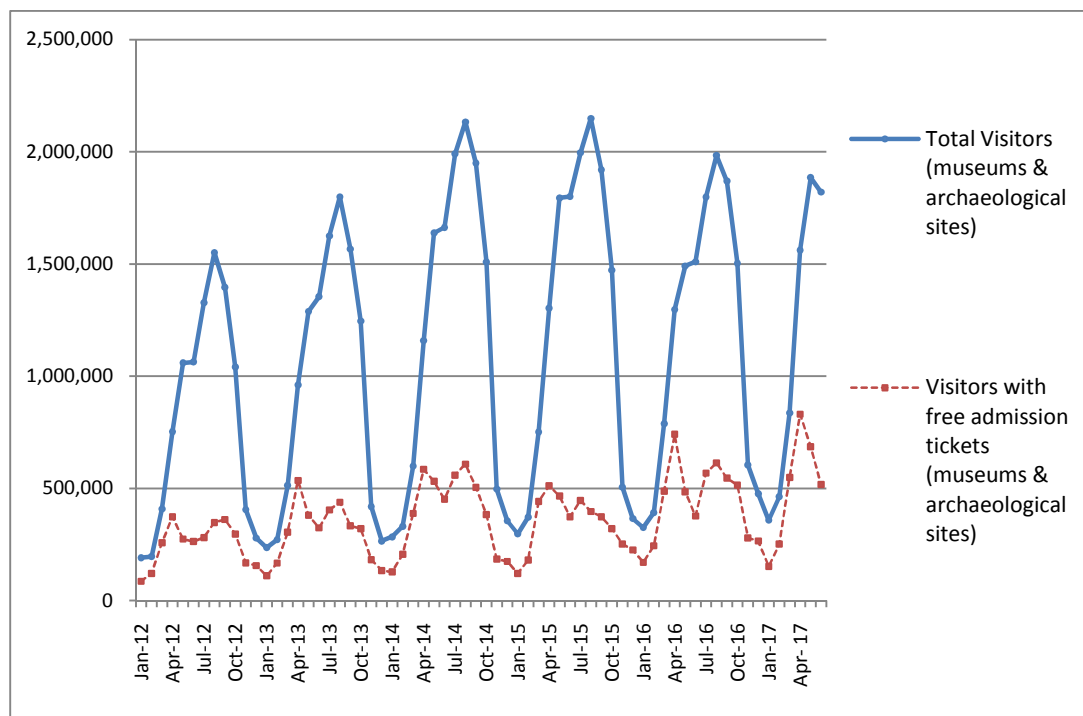
PRESS RELEASE

SURVEY ON MUSEUMS AND ARCHAEOLOGICAL SITES ATTENDANCE JUNE 2017

The Hellenic Statistical Authority (ELSTAT) announces the results of the *Survey on Museums and Archaeological Sites Attendance* for June 2017. More specifically:

- In June 2017 compared with the corresponding month of 2016, Museums experienced a 19.9% increase in the number of visitors and a 56.2% increase in the number of free admission visitors as well as a 26.1% increase in their receipts (Table 1).
- In June 2017 compared with the corresponding month of 2016, the number of visitors at Archaeological sites recorded an increase of 20.9%, while an increase of 29.3% was observed in the number of free admission visitors and a 17.7% increase in the corresponding receipts (Table 1).
- During the six-month period from January to June 2017, an increase of 18.2% was observed in the number of visitors of Museums, while an increase of 16.6% was recorded in the number of free admission visitors and a 24.5% increase in the relevant receipts, in comparison with the corresponding period of 2016 (Table 2).
- As regards Archaeological sites, during the six-month period from January to June 2017, an increase of 20.0% was recorded in the number of visitors, while a 21.1% increase was observed in the number of free admission visitors and a 21.3% increase in the relevant receipts, in comparison with the corresponding period of 2016 (Table 2).

Graph 1: Visitors of Museums and Archaeological sites (Jan 2012 – June 2017)



Information:

Social Statistics Division

Section of Culture and Sports statistics,

Argyro Pateraki (Tel: +30 213 1352129, e-mail: ar.pateraki@statistics.gr)

**TABLE 1: VISITORS OF MUSEUMS AND ARCHAEOLOGICAL SITES - TOTAL RECEIPTS
(JUNE 2016 & JUNE 2017)**

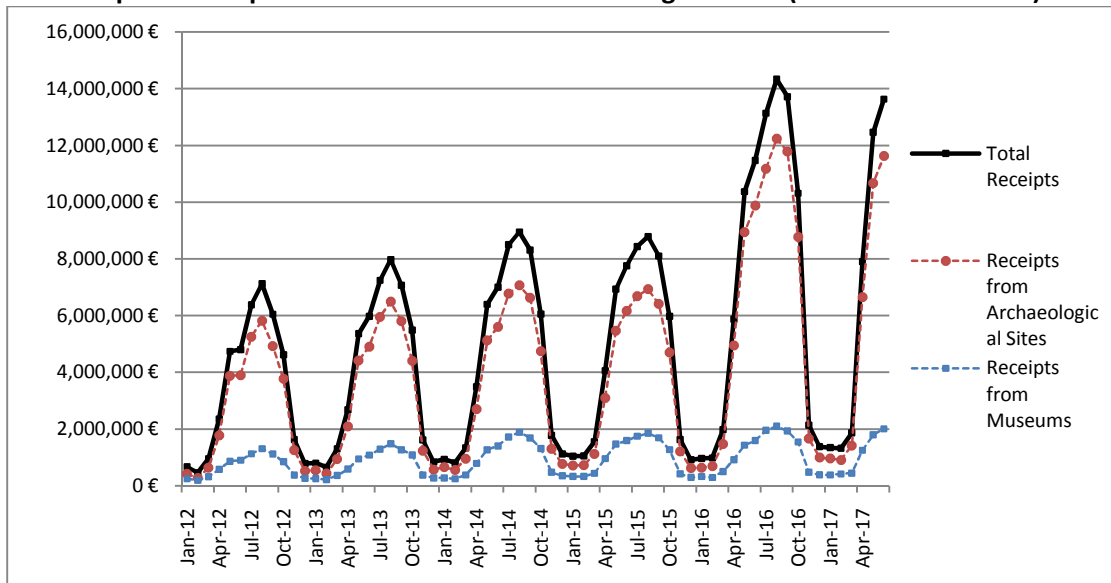
I. VISITORS			
Museums and Archaeological sites	2016	2017	Change 2017/2016
Total number of visitors (A+B)	1,509,359	1,820,321	20.6%
A. Museums (C+E)	424,689	509,058	19.9%
Acropolis Museum	133,702	163,031	21.9%
National Archaeological	40,290	50,556	25.5%
Ancient Olympia	10,822	14,017	29.5%
Palace of the Grand Master (Rhodes)	29,715	28,104	-5.4%
Herakleion Archaeological (Crete)	47,314	48,647	2.8%
White Tower	15,537	21,036	35.4%
Delphi	16,680	22,803	36.7%
Other museums	130,629	160,864	23.1%
B. Archaeological Sites (D+F)	1,084,670	1,311,263	20.9%
Epidavros ⁽¹⁾	36,594	47,209	29.0%
The Acropolis of Mycenae & Atreus' Treasure	33,202	40,532	22.1%
The Acropolis of Athens ⁽²⁾	209,081	317,786	52.0%
Sounio	24,434	27,486	12.5%
The Acropolis of Lindos	57,444	64,523	12.3%
Royal Tombs of Vergina	17,490	18,336	4.8%
Ancient Olympia	49,555	52,407	5.8%
Knossos (Crete)	76,945	78,899	2.5%
Phaistos (Crete)	9,175	10,065	9.7%
Ancient Korinthos ⁽¹⁾	15,193	18,729	23.3%
Mystras ⁽¹⁾	10,012	12,145	21.3%
Delphi	29,559	36,362	23.0%
Other archaeological sites	515,986	586,784	13.7%
II. VISITORS WHO PAID TICKET			
	2016	2017	Change 2017/2016
Total number of visitors who paid ticket (C+D)	1,132,499	1,302,750	15.0%
C. Museums	312,001	333,052	6.7%
D. Archaeological sites	820,498	969,698	18.2%
III. VISITORS WITH FREE ADMISSION TICKETS			
	2016	2017	Change 2017/2016
Total number of visitors with free admission ticket (E+F)	376,860	517,571	37.3%
E. Museums	112,688	176,006	56.2%
F. Archaeological sites	264,172	341,565	29.3%
IV. RECEIPTS (euros)			
	2016	2017	Change 2017/2016
Total Receipts (G+H)	11,470,251.00	13,631,637.00	18.8%
G. Museums	1,591,143.00	2,006,908.00	26.1%
H. Archaeological sites	9,879,108.00	11,624,729.00	17.7%

⁽¹⁾ Flat rate ticket, valid both for the museum and the archaeological site,

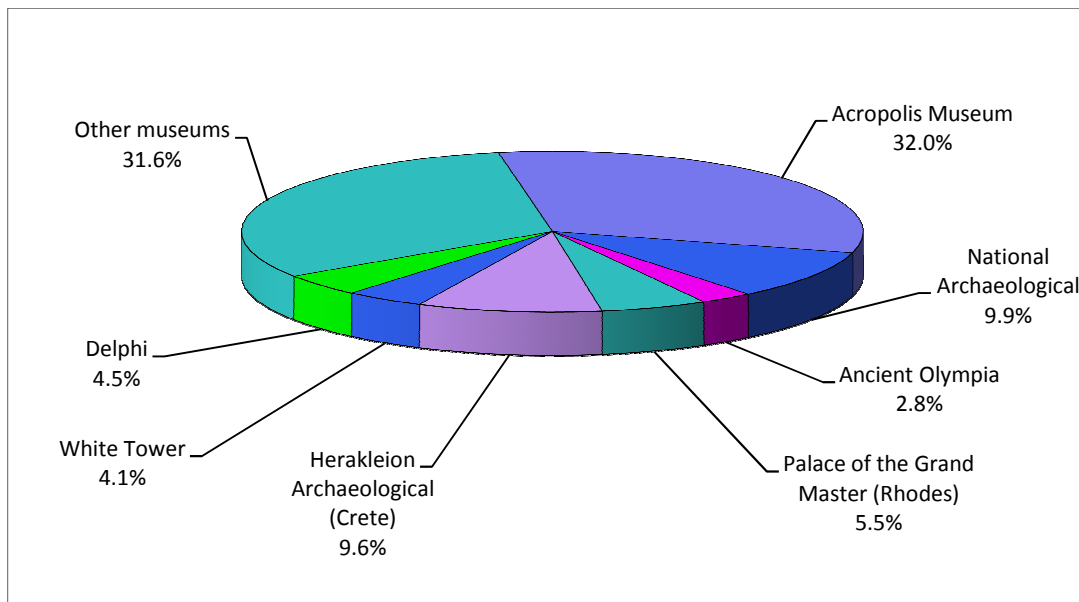
⁽²⁾ During the month of June the tickets for the ancient theatre of Dionysos are included in the archaeological site of Acropolis

The following graphs depict the evolution of the receipts (Graph 2), as well as the number of visitors by Museum and Archaeological Site (Graphs 3 and 4, respectively),

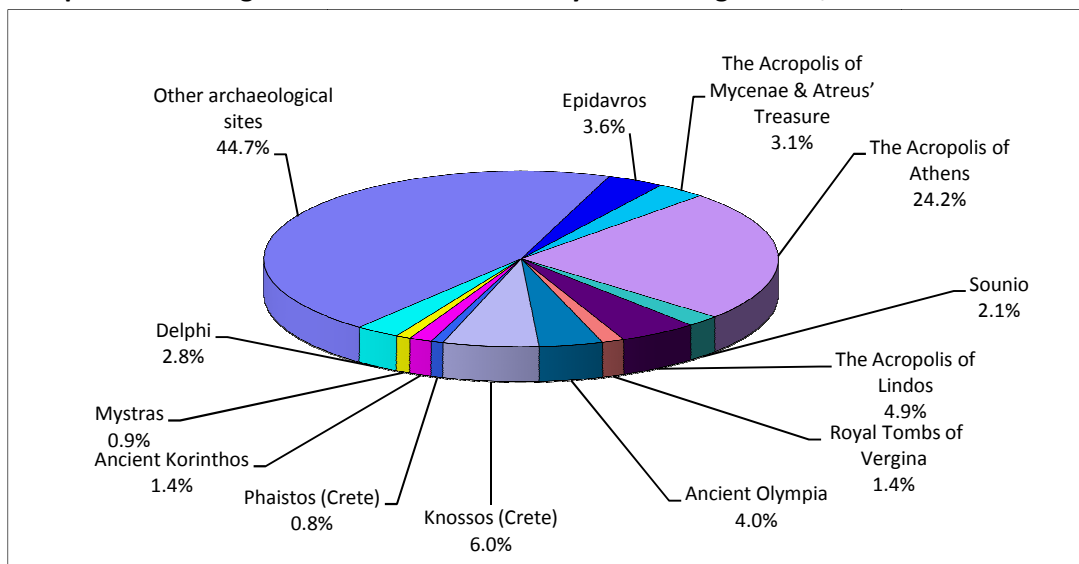
Graph 2: Receipts from Museums and Archaeological Sites (Jan 2012 - Jun 2017)



Graph 3: Percentage distribution of Visitors by Museum, June 2017



Graph 4: Percentage distribution of Visitors by Archaeological site, June 2017



**TABLE 2: VISITORS OF MUSEUMS AND ARCHAEOLOGICAL SITES - TOTAL RECEIPTS
(2015, 2016 AND JANUARY- JUNE 2016 & 2017)**

I. VISITORS					
Museums and Archaeological sites	2015	2016	JANUARY- JUNE		change
			2016	2017	2017/2016
Total number of visitors (A+B)	14,725,895	14,040,961	5,801,070	6,924,666	19.4%
A. Museums (C+E)	4,405,842	4,476,288	1,961,852	2,318,042	18.2%
Acropolis Museum	1,510,615	1,406,096	627,543	723,481	15.3%
National Archaeological	476,754	447,093	206,619	259,383	25.5%
Ancient Olympia	135,972	124,136	62,548	71,975	15.1%
Palace of the Grand Master (Rhodes)	251,091	237,361	69,786	78,635	12.7%
Herakleion Archaeological (Crete)	201,657	355,237	141,447	139,386	-1.5%
White Tower	273,659	290,192	126,594	120,860	-4.5%
Delphi	205,369	166,091	83,649	108,550	29.8%
Other museums	1,350,725	1,450,082	643,666	815,772	26.7%
B. Archaeological Sites (D+F)	10,320,053	9,564,673	3,839,218	4,606,624	20.0%
Epidavros ⁽¹⁾	443,565	375,437	172,633	229,066	32.7%
The Acropolis of Mycenae & Atreus' Treasure	402,565	342,854	167,664	185,832	10.8%
The Acropolis of Athens	2,043,868	1,807,580	800,773	1,085,636	35.6%
Sounio	236,285	222,800	103,704	117,933	13.7%
The Acropolis of Lindos	580,875	421,070	122,254	135,601	10.9%
Royal Tombs of Vergina	211,132	186,627	99,823	107,278	7.5%
Ancient Olympia	439,836	423,424	168,568	182,835	8.5%
Knossos (Crete)	632,288	611,455	208,162	203,800	-2.1%
Phaistos (Crete)	94,689	77,071	26,723	28,636	7.2%
Ancient Korinthos ⁽¹⁾	141,490	153,307	72,327	98,603	36.3%
Mystras ⁽¹⁾	117,010	114,293	50,814	54,209	6.7%
Delphi	319,754	290,705	135,465	159,938	18.1%
Other archaeological sites	4,656,696	4,538,050	1,710,308	2,017,257	17.9%
II. VISITORS WHO PAID TICKET					
	2015	2016	JANUARY-JUNE		change
			2016	2017	2017/2016
Total number of visitors who paid ticket (C+D)	10,544,249	8,749,957	3,296,556	3,938,132	19.5%
C. Museums	2,867,641	2,406,665	950,351	1,138,855	19.8%
D. Archaeological sites	7,676,608	6,343,292	2,346,205	2,799,277	19.3%
III. VISITORS WITH FREE ADMISSION TICKETS					
	2015	2016	JANUARY-JUNE		change
			2016	2017	2017/2016
Total number of visitors with free admission ticket (E+F)	4,181,646	5,291,004	2,504,514	2,986,534	19.2%
E. Museums	1,538,201	2,069,623	1,011,501	1,179,187	16.6%
F. Archaeological sites	2,643,445	3,221,381	1,493,013	1,807,347	21.1%
IV. RECEIPTS (euros)					
	2015	2016	JANUARY-JUNE		change
			2016	2017	2017/2016
Total Receipts (G+H)	56,224,962.00	86,647,638.00	31,631,870.00	38,527,143.00	21.8%
G. Museums	12,385,213.00	13,448,464.00	5,058,515.00	6,295,749.00	24.5%
H. Archaeological sites	43,839,749.00	73,199,174.00	26,573,355.00	32,231,394.00	21.3%

⁽¹⁾ Flat rate ticket, valid both for the museum and the archaeological site,

EXPLANATORY NOTES

Survey on Museums and Archaeological Sites Attendance	The Survey on Museums and Archaeological Sites Attendance has been producing results since 1970, The survey collects data from the Archaeological Receipts Fund (ARF) of the Ministry of Culture and Sports concerning the number of visitors and the receipts from the tickets sold in the Museums and Archaeological sites of the country. The corresponding data for the Acropolis Museum are available from December 2009 onwards.
Legal Framework	The survey is conducted since 1970 on a regular basis and it produces results on a monthly and yearly basis, in compliance with the Joint Ministerial Decision 15189/B379/73.
Reference Period	01/06/2017 to 30/06/2017.
Methodology and Definitions	The Survey is conducted on a monthly basis from data collected from the Archaeological Receipts Fund (ARF) of the Ministry of Culture and Sports concerning on the number of visitors and the receipts from the tickets sold in the Museums and Archaeological sites of the country, ELSTAT tabulates the data on Museums and the Archaeological sites for the whole of the Country, by month and by year.

Information on ticket payment

- From January 2002 onwards, the number of Museums' visitors includes both the visitors who have bought a ticket and the visitors with free admission ticket, From 16-06-1996 onwards, the Museums and the Archaeological sites all over Greece have a paid admission for all the visitors, Greeks and foreigners, all over the year, except in the following days, which are free admission days:
- National Holidays (25th of March and 28th of October)
- The first Sunday every month during the five month period from 1 November to 31 March
- The 6th of March (in memory of Melina Merkouri)
- The 18th of April (International Monuments Day)
- The 18th of May (International Museums Day)
- The 5th of June (International Environment Day)
- The last weekend of September, annually (European Heritage Days)

Free admission tickets

The admission to Museums and Archaeological site is free for:

- Young people from EU-countries aged under 18 years, with current identification card to confirm their age,
- Students of Universities and of Higher and Technical Education Institutions or equivalent institutions of EU-countries, as well as of Tour Guide Training Institutes, with valid student identification card or International Student Identity Card (ISIC)
- Employees of the Hellenic Ministry of Culture, with valid professional identity card
- ICOM and ICOMOS cardholders
- Tour Guides with their current working identification card from the Ministry of Development
- Teachers accompanying pupils and students on primary, secondary and tertiary education institution tours
- Journalists with valid journalists' identification card
- Members of Associations and Societies of Friends of Museums and Archaeological Sites
- Official guests of the Greek Government, after relevant approval
- Escorts of blind persons and persons with disabilities
- Free admission cardholders
- Holders of the Culture Card

Number of flat rate tickets

From April 1999 onwards, in some museums and the nearby archaeological sites, in addition to the ordinary ticket, a new "flat rate ticket" was established, which is valid for both the museum and the nearby archaeological site. The total number of these flat rate tickets for **June 2017** was **109,758**.

References	More information on the Survey on Museums and Archaeological Sites Attendance and detailed time series are available on: http://www.statistics.gr/en/statistics/-/publication/SCI21/
-------------------	--