



HELLENIC REPUBLIC



HELLENIC STATISTICAL AUTHORITY

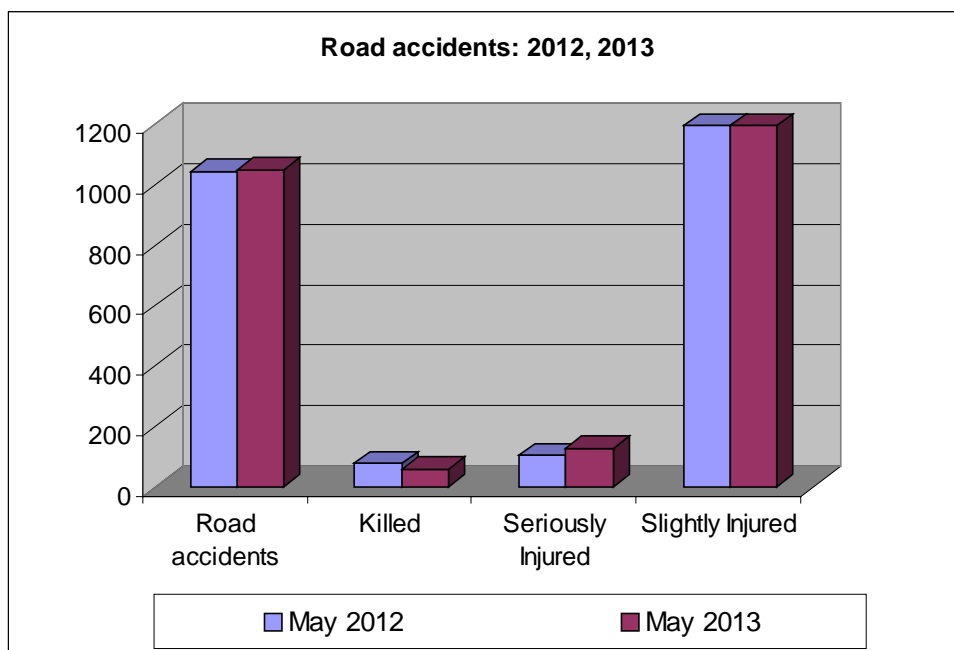
Piraeus, 31 July 2013

## PRESS RELEASE

### ROAD ACCIDENTS: May 2013

In May 2013 the road traffic accidents, which occurred in Greece resulting in injured or killed persons, increased by 0.7 % in comparison with the corresponding month of 2012 (1,052 road accidents in May 2013 against 1,045 road accidents in May 2012).

Among the casualties of the injury-causing accidents, that occurred in May 2013, 57 persons were killed, 127 persons were seriously injured and 1,197 persons were slightly injured. In contrast, in May 2012 the corresponding figures were: 78 persons killed, 104 seriously injured and 1,198 slightly injured. Therefore, road accident casualties in May 2013 recorded a decrease by 26.9% for persons killed, an increase by 22.1% for persons seriously injured and a decrease by 0.1% for persons slightly injured.



Contact:  
Social Statistics Division  
Justice and Public Order Statistics Section

K. Theodoraki  
Tel : +30 213 1352771  
Fax : +30 213 1352764

Table 1. Road accidents and casualties, by region (NUTS 2) and department - May 2012 and 2013

Region and Department	Road Accidents			Killed			Seriously Injured			Slightly Injured		
	2012	2013	%	2012	2013	%	2012	2013	%	2012	2013	%
<b>Greece, total</b>	<b>1,045</b>	<b>1,052</b>	<b>0.7%</b>	<b>78</b>	<b>57</b>	<b>-26.9%</b>	<b>104</b>	<b>127</b>	<b>22.1%</b>	<b>1,198</b>	<b>1,197</b>	<b>-0.1%</b>
<b>Anatoliki Makedonia, Thraki (East Macedonia and Thrace)</b>	<b>53</b>	<b>52</b>	<b>-1.9%</b>	<b>6</b>	<b>4</b>	<b>-33.3%</b>	<b>9</b>	<b>6</b>	<b>-33.3%</b>	<b>54</b>	<b>66</b>	<b>22.2%</b>
Drama	12	6	-50.0%	0	0		0	2		17	5	
Evros	7	17	142.9%	1	2		2	2		7	20	
Kavala	11	10	-9.1%	1	1		4	0		7	11	
Xanthi	10	7	-30.0%	2	0		2	1		11	12	
Rodopi	13	12	-7.7%	2	1		1	1		12	18	
<b>Kentriki Makedonia (Central Macedonia)</b>	<b>202</b>	<b>200</b>	<b>-1.0%</b>	<b>10</b>	<b>4</b>	<b>-60.0%</b>	<b>12</b>	<b>18</b>	<b>50.0%</b>	<b>257</b>	<b>233</b>	<b>-9.3%</b>
Imathia	9	12	33.3%	3	2		2	3		14	11	
Thessaloniki	168	166	-1.2%	1	2		5	11		220	194	
Kilkis	3	4	33.3%	0	0		0	0		6	4	
Pella	6	1	-83.3%	1	0		1	0		5	1	
Pieria	1	1	0.0%	1	0		0	0		0	1	
Serres	8	12	50.0%	2	0		2	3		6	12	
Chalkidiki	7	4	-42.9%	2	0		2	1		6	10	
<b>Dytiki Makedonia (West Macedonia)</b>	<b>5</b>	<b>21</b>	<b>320.0%</b>	<b>0</b>	<b>2</b>	<b>-</b>	<b>0</b>	<b>3</b>	<b>-</b>	<b>5</b>	<b>25</b>	<b>400.0%</b>
Grevena	1	1	0.0%	0	0		0	1		1	0	
Kastoria	0	4	-	0	0		0	1		0	6	
Kozani	4	13	225.0%	0	1		0	0		4	18	
Florina	0	3	-	0	1		0	1		0	1	
<b>Ipeiros (Epirus)</b>	<b>7</b>	<b>15</b>	<b>114.3%</b>	<b>1</b>	<b>0</b>	<b>-100.0%</b>	<b>4</b>	<b>6</b>	<b>50.0%</b>	<b>5</b>	<b>16</b>	<b>220.0%</b>
Arta	1	0	-100.0%	0	0		0	0		1	0	
Thesprotia	2	6	200.0%	0	0		1	1		1	8	
Ioannina	1	6	500.0%	1	0		0	3		0	4	
Preveza	3	3	0.0%	0	0		3	2		3	4	
<b>Thessalia (Thessaly)</b>	<b>32</b>	<b>31</b>	<b>-3.1%</b>	<b>8</b>	<b>6</b>	<b>-25.0%</b>	<b>8</b>	<b>11</b>	<b>37.5%</b>	<b>24</b>	<b>32</b>	<b>33.3%</b>
Karditsa	11	8	-27.3%	4	2		0	3		8	9	
Larisa	9	15	66.7%	2	3		6	7		6	14	
Magnisia	7	4	-42.9%	1	1		1	1		6	3	
Trikala	5	4	-20.0%	1	0		1	0		4	6	
<b>Ionioi Nisoi (Ionian Islands)</b>	<b>12</b>	<b>15</b>	<b>25.0%</b>	<b>3</b>	<b>2</b>	<b>-33.3%</b>	<b>2</b>	<b>2</b>	<b>0.0%</b>	<b>9</b>	<b>11</b>	<b>22.2%</b>
Zakynthos	0	6	-	0	1		0	1		0	4	
Kerkyra	9	7	-22.2%	2	0		2	1		6	6	
Kefallinia	1	1	0.0%	0	0		0	0		2	1	
Lefkada	2	1	-50.0%	1	1		0	0		1	0	

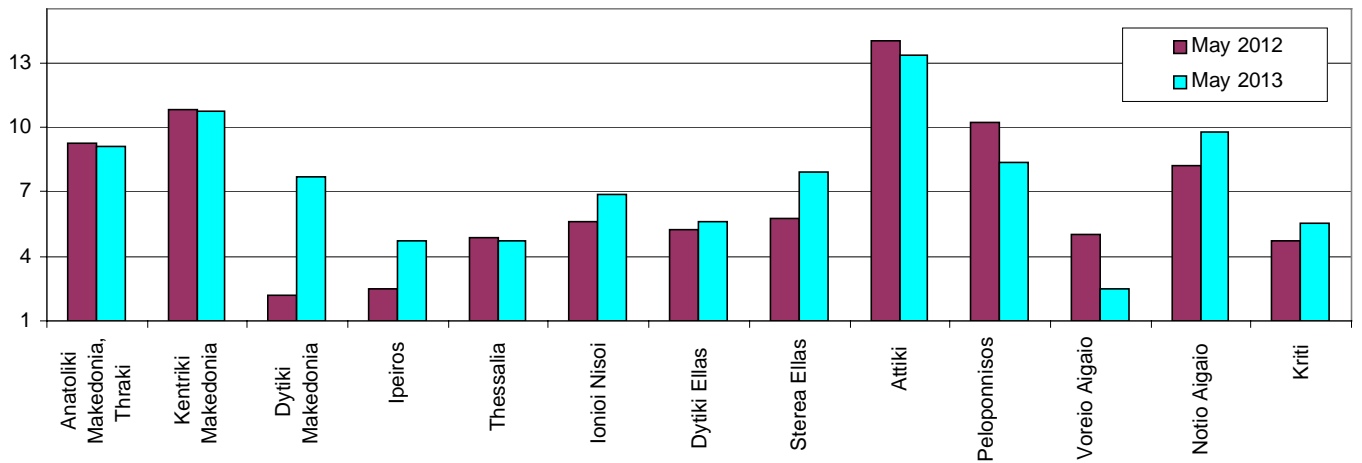
Table 1. Continued

Region and Department	Road Accidents			Killed			Seriously Injured			Slightly Injured		
	2012	2013	%	2012	2013	%	2012	2013	%	2012	2013	%
<b>Dytiki Ellas (West Greece)</b>	<b>35</b>	<b>38</b>	<b>8.6%</b>	<b>9</b>	<b>4</b>	<b>-55.6%</b>	<b>9</b>	<b>3</b>	<b>-66.7%</b>	<b>37</b>	<b>42</b>	<b>13.5%</b>
Aitolia, Akarnania	9	9	0.0%	6	1		2	0		7	13	
Achaia	23	18	-21.7%	2	2		6	1		27	19	
Ileia	3	11	266.7%	1	1		1	2		3	10	
<b>Sterea Ellas</b>	<b>29</b>	<b>41</b>	<b>41.4%</b>	<b>7</b>	<b>4</b>	<b>-42.9%</b>	<b>3</b>	<b>11</b>	<b>266.7%</b>	<b>42</b>	<b>50</b>	<b>19.0%</b>
Voiotia	4	9	125.0%	3	0		0	0		5	17	
Evvoia	11	18	63.6%	2	2		1	4		17	14	
Evrytania	0	1	-	0	0		0	1		0	0	
Fthiotida	11	12	9.1%	1	2		2	6		18	16	
Fokida	3	1	-66.7%	1	0		0	0		2	3	
<b>Attiki (Attica)</b>	<b>554</b>	<b>529</b>	<b>-4.5%</b>	<b>15</b>	<b>18</b>	<b>20.0%</b>	<b>34</b>	<b>31</b>	<b>-8.8%</b>	<b>646</b>	<b>611</b>	<b>-5.4%</b>
<b>Peloponnisos (Peloponnese)</b>	<b>57</b>	<b>46</b>	<b>-19.3%</b>	<b>11</b>	<b>6</b>	<b>-45.5%</b>	<b>9</b>	<b>18</b>	<b>100.0%</b>	<b>54</b>	<b>61</b>	<b>13.0%</b>
Argolida	8	8	0.0%	1	0		1	3		8	9	
Arkadia	8	9	12.5%	1	3		2	1		10	18	
Korinthia	19	14	-26.3%	4	2		3	1		16	13	
Lakonia	12	9	-25.0%	1	0		2	3		11	9	
Messinia	10	6	-40.0%	4	1		1	10		9	12	
<b>Voreio Aigaio (North Aegean)</b>	<b>9</b>	<b>4</b>	<b>-55.6%</b>	<b>0</b>	<b>0</b>	<b>0.0%</b>	<b>1</b>	<b>1</b>	<b>0.0%</b>	<b>10</b>	<b>3</b>	<b>-70.0%</b>
Lesvos	6	2	-66.7%	0	0		1	0		6	2	
Samos	1	0	-100.0%	0	0		0	0		1	0	
Chios	2	2	0.0%	0	0		0	1		3	1	
<b>Notio Aigaio (South Aegean)</b>	<b>24</b>	<b>29</b>	<b>20.8%</b>	<b>5</b>	<b>4</b>	<b>-20.0%</b>	<b>6</b>	<b>8</b>	<b>33.3%</b>	<b>25</b>	<b>25</b>	<b>0.0%</b>
Dodekanisos	16	13	-18.8%	3	1		4	3		20	13	
Kyklades	8	16	100.0%	2	3		2	5		5	12	
<b>Kriti (Crete)</b>	<b>26</b>	<b>31</b>	<b>19.2%</b>	<b>3</b>	<b>3</b>	<b>0.0%</b>	<b>7</b>	<b>9</b>	<b>28.6%</b>	<b>30</b>	<b>22</b>	<b>-26.7%</b>
Irakleio	20	9	-55.0%	2	2		7	3		21	4	
Lasithi	1	2	100.0%	0	0		0	1		2	1	
Rethymni	1	4	300.0%	0	1		0	0		1	3	
Chania	4	16	300.0%	1	0		0	5		6	14	

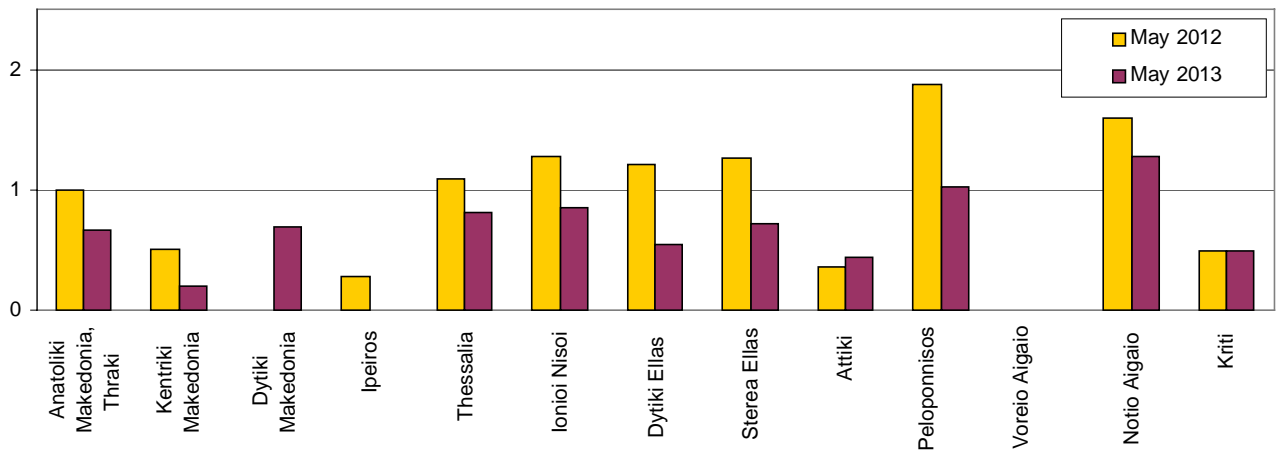
Table 2. Road accidents and casualties, for the period January - May of the years 2011, 2012 and 2013

Period:	January - May			Percentage Change	
	2011	2012	2013	2012/2011	2013/2012
<b>Road accidents</b>	5,171	4,560	4,645	-11.8	1.9
<b>Killed</b>	364	356	301	-2.2	-15.4
<b>Seriously injured</b>	602	467	479	-22.4	2.6
<b>Slightly injured</b>	5,743	5,124	5,174	-10.8	1.0
<b>Casualties-Total</b>	6,345	5,591	5,653	-11.9	1.1

**Diagram 1: Road accidents per 100,000 inhabitants**



**Diagram 2: Persons killed per 100,000 inhabitants**



**Diagram 3: Persons seriously injured per 100,000 inhabitants**

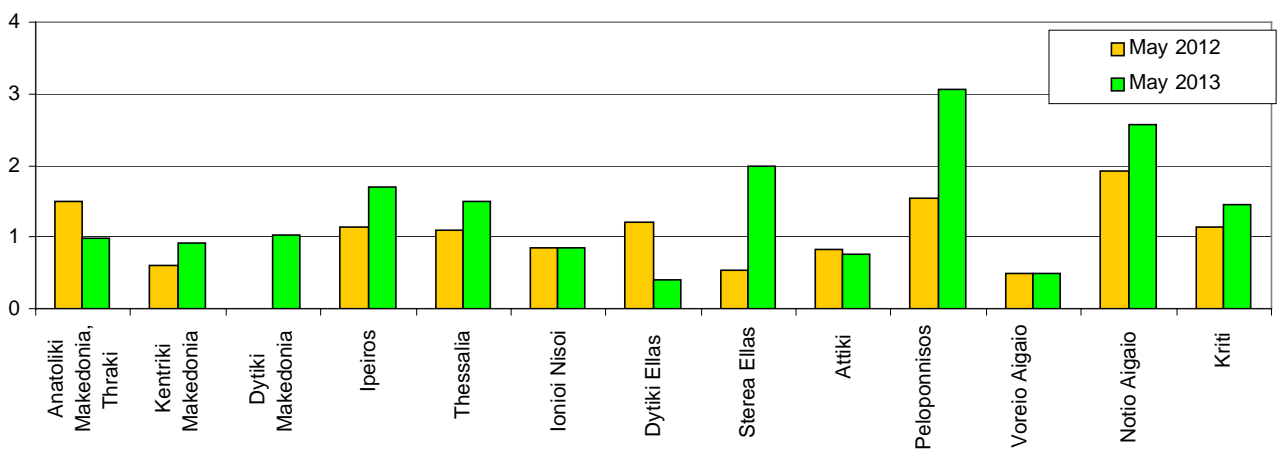
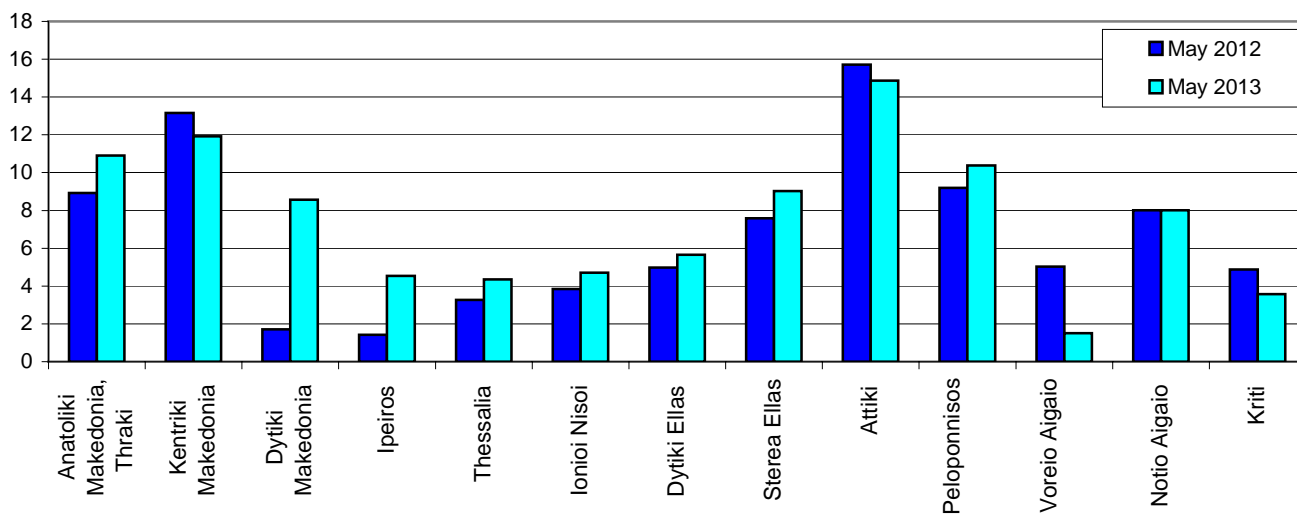


Diagram 4: Persons slightly injured per 100,000 inhabitants



## EXPLANATORY NOTES

<b>Survey on Road Accidents</b>	<p>The survey on road accidents is conducted on a monthly basis and it records, for each Department of Greece and for each month separately, the number of accidents by fatal and/or non-fatal accident, as well as the number of persons injured by categories (drivers, passengers, pedestrians). On a yearly basis, road accidents are further analyzed.</p> <p>The competent agencies for filling in/collecting the questionnaires on road accidents are the local Police Authorities and the local Port Authorities of Greece.</p> <p>The lower level of analysis for the place where an injury road accident occurred is the settlement (oikismos), which is described by a 8-digit geographic code. Data are collected on a monthly basis.</p> <p>The main variables are the following: place of accident, kind of road, casualties, conditions of road surface and type of road.</p>
<b>Legal basis</b>	<p>The Survey on Road Traffic Accidents is governed by Council Decision 93/704/EC.</p>
<b>Reference Period</b>	<p>01.05.2013 to 31.05.2013</p>
<b>Availability of Results</b>	<p>Provisional data: 2 months after the accident Final data: 1 year after the reference year</p>
<b>National Definitions</b>	<p><b>Road accident</b> (injury accident): Any accident involving at least one road motor vehicle in motion on a public road or square to which the public has access (excluding yards, industrial sites or vehicle depot of public transport enterprises), resulting in at least one injured or killed person. Accidents with only material damages are not included.</p> <p><b>Person killed:</b> Any person killed immediately or dying within 30 days as a result of an injury accident (This national definition applies since 01.01.1996)</p> <p><b>Person injured:</b> Any person who sustained an injury as result of an injury accident, and who normally needs medical treatment.</p> <p><b>Seriously injured:</b> Any person who sustained an injury as result of an injury accident, such as brain damages, mutilation, multiple injuries, which may result in lack of awareness or which are life-threatening.</p> <p><b>Slightly injured:</b> Any person injured who sustained minor and not life-threatening injuries.</p> <p><b>Vehicle:</b> For the purposes of road accidents statistics, vehicles include motor vehicles, trolleybuses, motorcycles, bicycles, motorbikes, agricultural and road making machines, animal and hand-drawn vehicles. Railway vehicles are excluded, unless the road accident involves one of the aforementioned types of vehicles and therefore, railway vehicles are considered vehicles.</p>
<b>Methodology</b>	<p>The questionnaires of the survey are filled in by the local Police Authorities and the local Port Authorities as well.</p>
<b>References</b>	<p>More information about road accidents is available on ELSTAT's website and more specifically at the link: <a href="http://www.statistics.gr">www.statistics.gr</a> &gt; Statistical Themes &gt; Health – Social protection &gt; Accidents &gt; Road Traffic Accidents.</p> <p>It should be noted that previous press releases and time series are available on ELSTAT's website: <a href="http://www.statistics.gr">www.statistics.gr</a></p>