



HELLENIC REPUBLIC



HELLENIC STATISTICAL AUTHORITY

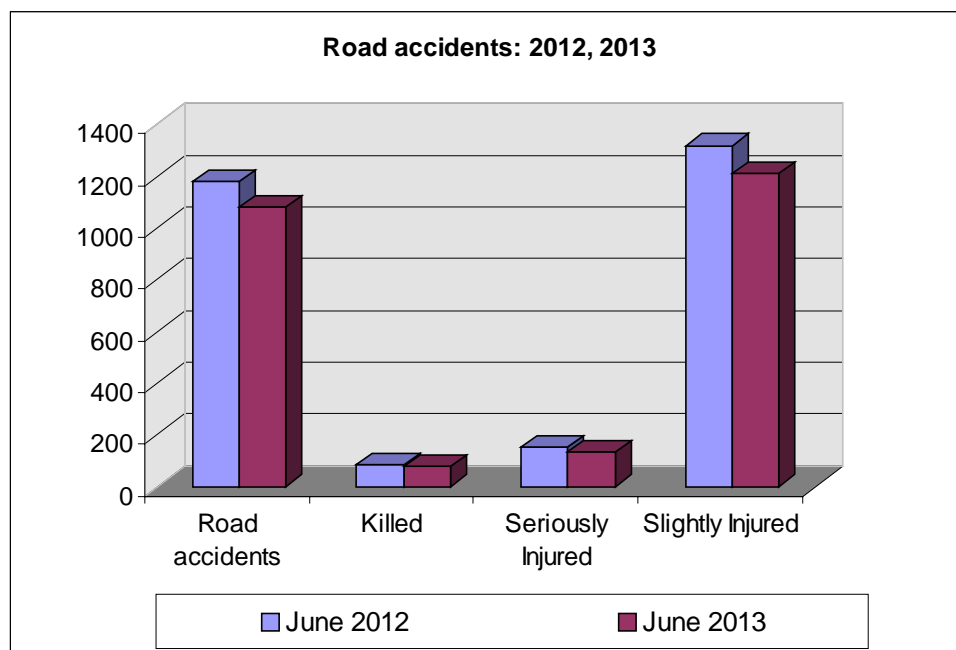
Piraeus, 30 August 2013

## PRESS RELEASE

### ROAD ACCIDENTS: June 2013

In June 2013 the road traffic accidents, which occurred in Greece resulting in injured or killed persons, decreased by 8.3 % in comparison with the corresponding month of 2012 (1,082 road accidents in June 2013 against 1,180 road accidents in June 2012).

Among the casualties of the injury-causing accidents that occurred in June 2013, 77 persons were killed, 132 persons were seriously injured and 1,211 persons were slightly injured. In contrast, in June 2012 the corresponding figures were: 84 persons killed, 151 seriously injured and 1,319 slightly injured. Therefore, road accident casualties in June 2013 recorded a decrease by 8.3% for persons killed, by 12.6% for persons seriously injured and by 8.2% for persons slightly injured.



Contact:  
Social Statistics Division  
Justice and Public Order Statistics Section

K. Theodoraki  
Tel : +30 213 1352771  
Fax : +30 213 1352764

Table 1. Road accidents and casualties, by region (NUTS 2) and department - June 2012 and 2013

Region and Department	Road Accidents			Killed			Seriously Injured			Slightly Injured		
	2012	2013	%	2012	2013	%	2012	2013	%	2012	2013	%
<b>Greece, total</b>	<b>1,180</b>	<b>1,082</b>	<b>-8.3%</b>	<b>84</b>	<b>77</b>	<b>-8.3%</b>	<b>151</b>	<b>132</b>	<b>-12.6%</b>	<b>1,319</b>	<b>1,211</b>	<b>-8.2%</b>
<b>Anatoliki Makedonia, Thraki (East Macedonia and Thrace)</b>	<b>62</b>	<b>37</b>	<b>-40.3%</b>	<b>7</b>	<b>3</b>	<b>-57.1%</b>	<b>17</b>	<b>4</b>	<b>-76.5%</b>	<b>59</b>	<b>47</b>	<b>-20.3%</b>
Drama	13	10	-23.1%	3	0		2	0		14	16	
Evros	15	7	-53.3%	1	0		2	0		12	10	
Kavala	15	5	-66.7%	1	2		5	2		15	2	
Xanthi	9	3	-66.7%	2	0		4	1		5	2	
Rodopi	10	12	20.0%	0	1		4	1		13	17	
<b>Kentriki Makedonia (Central Macedonia)</b>	<b>219</b>	<b>236</b>	<b>7.8%</b>	<b>20</b>	<b>12</b>	<b>-40.0%</b>	<b>28</b>	<b>28</b>	<b>0.0%</b>	<b>225</b>	<b>288</b>	<b>28.0%</b>
Imathia	25	12	-52.0%	4	1		4	2		23	12	
Thessaloniki	151	179	18.5%	5	7		8	8		168	229	
Kilkis	6	6	0.0%	1	2		2	4		5	4	
Pella	12	7	-41.7%	3	0		8	2		6	9	
Pieria	4	8	100.0%	1	1		1	2		5	8	
Serres	7	9	28.6%	1	1		3	4		3	9	
Chalkidiki	14	15	7.1%	5	0		2	6		15	17	
<b>Dytiki Makedonia (West Macedonia)</b>	<b>17</b>	<b>9</b>	<b>-47.1%</b>	<b>6</b>	<b>2</b>	<b>-66.7%</b>	<b>1</b>	<b>2</b>	<b>100.0%</b>	<b>12</b>	<b>7</b>	<b>-41.7%</b>
Grevena	1	1	0.0%	1	0		0	0		1	1	
Kastoria	2	0	-100.0%	2	0		0	0		0	0	
Kozani	12	7	-41.7%	2	2		0	2		11	5	
Florina	2	1	-50.0%	1	0		1	0		0	1	
<b>Ipeiros (Epirus)</b>	<b>8</b>	<b>11</b>	<b>37.5%</b>	<b>1</b>	<b>2</b>	<b>100.0%</b>	<b>1</b>	<b>5</b>	<b>400.0%</b>	<b>6</b>	<b>19</b>	<b>216.7%</b>
Arta	1	0	-100.0%	0	0		0	0		1	0	
Thesprotia	3	7	133.3%	0	0		1	0		2	8	
Ioannina	2	0	-100.0%	0	0		0	0		2	0	
Preveza	2	4	100.0%	1	2		0	5		1	11	
<b>Thessalia (Thessaly)</b>	<b>35</b>	<b>27</b>	<b>-22.9%</b>	<b>2</b>	<b>5</b>	<b>150.0%</b>	<b>8</b>	<b>9</b>	<b>12.5%</b>	<b>35</b>	<b>24</b>	<b>-31.4%</b>
Karditsa	7	6	-14.3%	0	0		1	0		8	7	
Larisa	12	10	-16.7%	2	3		3	4		12	9	
Magnisia	9	6	-33.3%	0	2		2	4		9	5	
Trikala	7	5	-28.6%	0	0		2	1		6	3	
<b>Ionioi Nisoi (Ionian Islands)</b>	<b>20</b>	<b>19</b>	<b>-5.0%</b>	<b>2</b>	<b>3</b>	<b>50.0%</b>	<b>5</b>	<b>3</b>	<b>-40.0%</b>	<b>18</b>	<b>21</b>	<b>16.7%</b>
Zakynthos	2	7	250.0%	1	1		0	2		2	9	
Kerkyra	8	7	-12.5%	0	1		4	0		5	8	
Kefallinia	2	2	0.0%	0	1		0	1		2	0	
Lefkada	8	3	-62.5%	1	0		1	0		9	4	

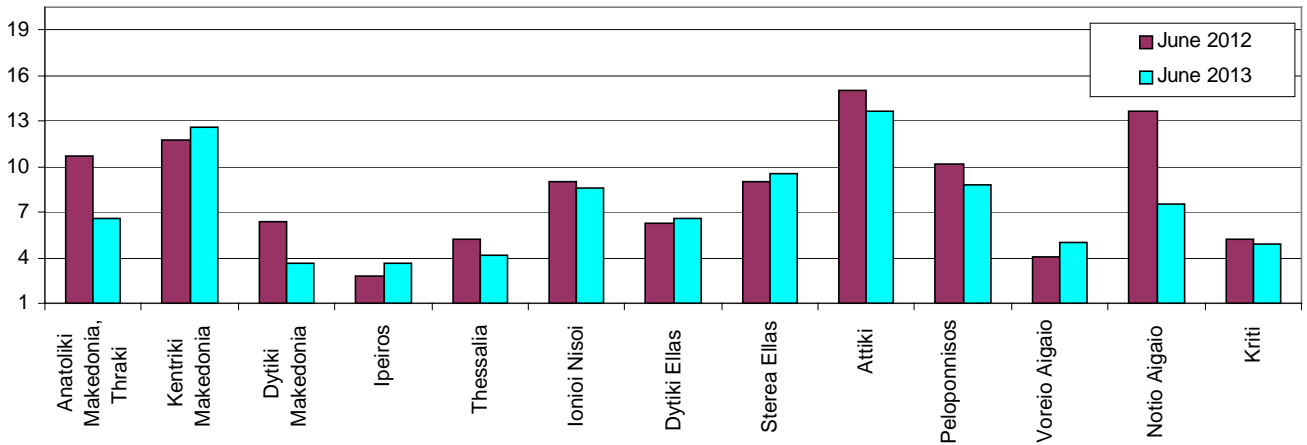
Table 1. Continued

Region and Department	Road Accidents			Killed			Seriously Injured			Slightly Injured		
	2012	2013	%	2012	2013	%	2012	2013	%	2012	2013	%
<b>Dytiki Ellas (West Greece)</b>	<b>43</b>	<b>45</b>	<b>4.7%</b>	<b>7</b>	<b>9</b>	<b>28.6%</b>	<b>13</b>	<b>6</b>	<b>-53.8%</b>	<b>46</b>	<b>47</b>	<b>2.2%</b>
Aitolia, Akarnania	20	13	-35.0%	2	2		8	3		17	19	
Achaia	13	20	53.8%	3	3		3	3		16	18	
Ileia	10	12	20.0%	2	4		2	0		13	10	
<b>Sterea Ellas</b>	<b>47</b>	<b>50</b>	<b>6.4%</b>	<b>9</b>	<b>12</b>	<b>33.3%</b>	<b>11</b>	<b>12</b>	<b>9.1%</b>	<b>48</b>	<b>31</b>	<b>-35.4%</b>
Voiotia	11	18	63.6%	1	5		3	3		15	13	
Evvoia	15	17	13.3%	4	4		6	4		8	9	
Evrytania	0	1	-	0	1		0	0		0	0	
Fthiotida	15	12	-20.0%	3	2		2	5		17	7	
Fokida	6	2	-66.7%	1	0		0	0		8	2	
<b>Attiki (Attica)</b>	<b>595</b>	<b>541</b>	<b>-9.1%</b>	<b>13</b>	<b>21</b>	<b>61.5%</b>	<b>28</b>	<b>37</b>	<b>32.1%</b>	<b>724</b>	<b>614</b>	<b>-15.2%</b>
<b>Peloponnisos (Peloponnese)</b>	<b>57</b>	<b>49</b>	<b>-14.0%</b>	<b>8</b>	<b>4</b>	<b>-50.0%</b>	<b>13</b>	<b>11</b>	<b>-15.4%</b>	<b>66</b>	<b>51</b>	<b>-22.7%</b>
Argolida	12	10	-16.7%	3	1		2	1		12	12	
Arkadia	13	8	-38.5%	2	0		1	0		22	12	
Korinthia	15	13	-13.3%	2	0		4	1		14	13	
Lakonia	9	6	-33.3%	0	0		3	5		11	6	
Messinia	8	12	50.0%	1	3		3	4		7	8	
<b>Voreio Aigaio (North Aegean)</b>	<b>7</b>	<b>9</b>	<b>28.6%</b>	<b>0</b>	<b>0</b>	<b>0.0%</b>	<b>0</b>	<b>2</b>	<b>-</b>	<b>10</b>	<b>12</b>	<b>20.0%</b>
Lesvos	4	8	100.0%	0	0		0	2		6	11	
Samos	1	0	-100.0%	0	0		0	0		1	0	
Chios	2	1	-50.0%	0	0		0	0		3	1	
<b>Notio Aigaio (South Aegean)</b>	<b>41</b>	<b>22</b>	<b>-46.3%</b>	<b>4</b>	<b>2</b>	<b>-50.0%</b>	<b>18</b>	<b>4</b>	<b>-77.8%</b>	<b>32</b>	<b>21</b>	<b>-34.4%</b>
Dodekanisos	18	15	-16.7%	2	1		5	4		18	14	
Kyklades	23	7	-69.6%	2	1		13	0		14	7	
<b>Kriti (Crete)</b>	<b>29</b>	<b>27</b>	<b>-6.9%</b>	<b>5</b>	<b>2</b>	<b>-60.0%</b>	<b>8</b>	<b>9</b>	<b>12.5%</b>	<b>38</b>	<b>29</b>	<b>-23.7%</b>
Irakleio	9	9	0.0%	2	2		4	5		11	9	
Lasithi	5	3	-40.0%	1	0		1	1		10	3	
Rethymni	5	1	-80.0%	1	0		1	0		5	1	
Chania	10	14	40.0%	1	0		2	3		12	16	

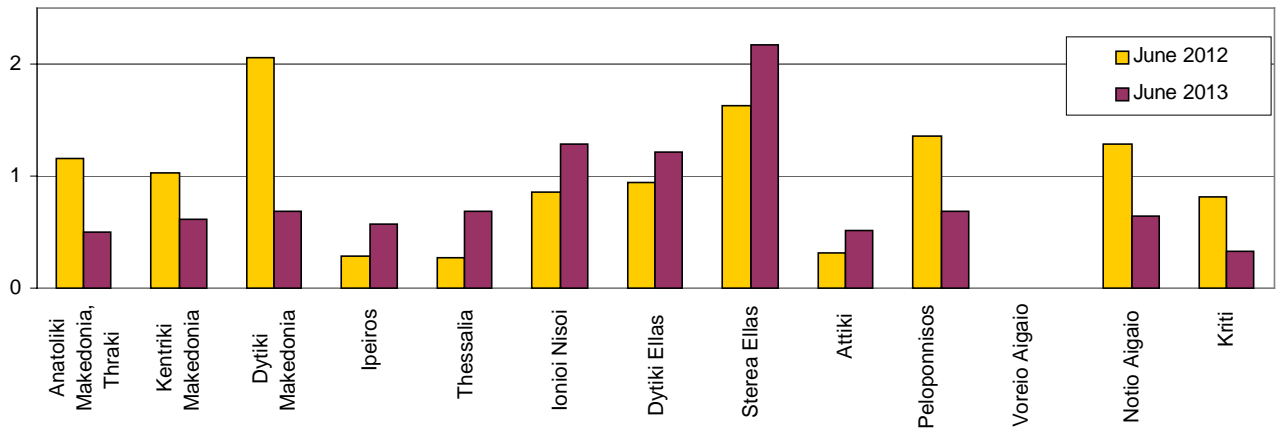
Table 2. Road accidents and casualties, for the period January - June of the years 2011, 2012 and 2013

Period:	January - June			Percentage Change	
	2011	2012	2013	2012/2011	2013/2012
<b>Road accidents</b>	6,516	5,740	5,727	-11.9	-0.2
<b>Killed</b>	466	440	378	-5.6	-14.1
<b>Seriously injured</b>	757	618	611	-18.4	-1.1
<b>Slightly injured</b>	7,269	6,443	6,385	-11.4	-0.9
<b>Casualties-Total</b>	8,026	7,061	6,996	-12.0	-0.9

**Diagram 1: Road accidents per 100,000 inhabitants**



**Diagram 2: Persons killed per 100,000 inhabitants**



**Diagram 3: Persons seriously injured per 100,000 inhabitants**

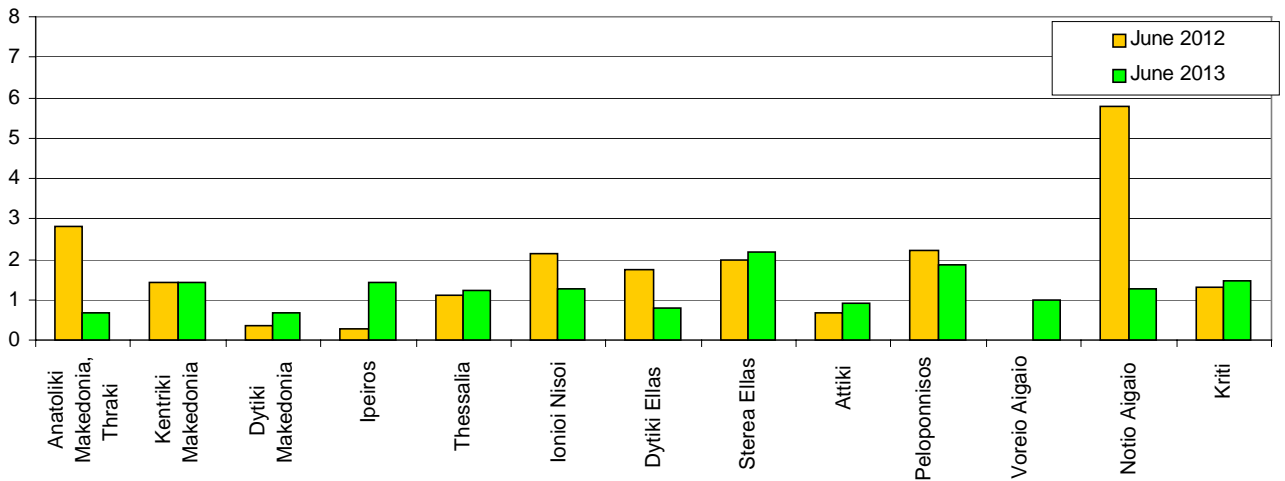
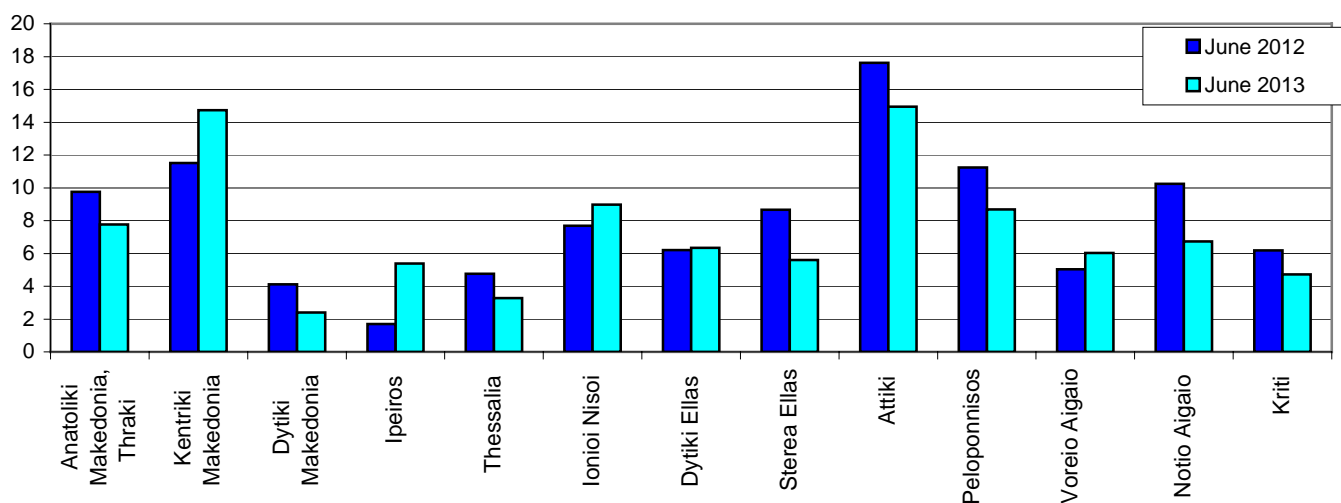


Diagram 4: Persons slightly injured per 100,000 inhabitants



## EXPLANATORY NOTES

<b>Survey on Road Accidents</b>	<p>The survey on road accidents is conducted on a monthly basis and it records, for each Department of Greece and for each month separately, the number of accidents by fatal and/or non-fatal accident, as well as the number of persons injured by categories (drivers, passengers, pedestrians). On a yearly basis, road accidents are further analyzed.</p> <p>The competent agencies for filling in/collecting the questionnaires on road accidents are the local Police Authorities and the local Port Authorities of Greece.</p> <p>The lower level of analysis for the place where an injury road accident occurred is the settlement (oikismos), which is described by a 8-digit geographic code. Data are collected on a monthly basis.</p> <p>The main variables are the following: place of accident, kind of road, casualties, conditions of road surface and type of road.</p>
<b>Legal basis</b>	<p>The Survey on Road Traffic Accidents is governed by Council Decision 93/704/EC.</p>
<b>Reference Period</b>	<p>01.06.2013 to 30.06.2013</p>
<b>Availability of Results</b>	<p>Provisional data: 2 months after the accident Final data: 1 year after the reference year</p>
<b>National Definitions</b>	<p><b>Road accident</b> (injury accident): Any accident involving at least one road motor vehicle in motion on a public road or square to which the public has access (excluding yards, industrial sites or vehicle depot of public transport enterprises), resulting in at least one injured or killed person. Accidents with only material damages are not included.</p> <p><b>Person killed:</b> Any person killed immediately or dying within 30 days as a result of an injury accident (This national definition applies since 01.01.1996)</p> <p><b>Person injured:</b> Any person who sustained an injury as result of an injury accident, and who normally needs medical treatment.</p> <p><b>Seriously injured:</b> Any person who sustained an injury as result of an injury accident, such as brain damages, mutilation, multiple injuries, which June result in lack of awareness or which are life-threatening.</p> <p><b>Slightly injured:</b> Any person injured who sustained minor and not life-threatening injuries.</p> <p><b>Vehicle:</b> For the purposes of road accidents statistics, vehicles include motor vehicles, trolleybuses, motorcycles, bicycles, motorbikes, agricultural and road making machines, animal and hand-drawn vehicles. Railway vehicles are excluded, unless the road accident involves one of the aforementioned types of vehicles and therefore, railway vehicles are considered vehicles.</p>
<b>Methodology</b>	<p>The questionnaires of the survey are filled in by the local Police Authorities and the local Port Authorities as well.</p>
<b>References</b>	<p>More information about road accidents is available on ELSTAT's website and more specifically at the link: <a href="http://www.statistics.gr">www.statistics.gr</a> &gt; Statistical Themes &gt; Health – Social protection &gt; Accidents &gt; Road Traffic Accidents.</p> <p>It should be noted that previous press releases and time series are available on ELSTAT's website: <a href="http://www.statistics.gr">www.statistics.gr</a></p>