



HELLENIC REPUBLIC



HELLENIC STATISTICAL AUTHORITY

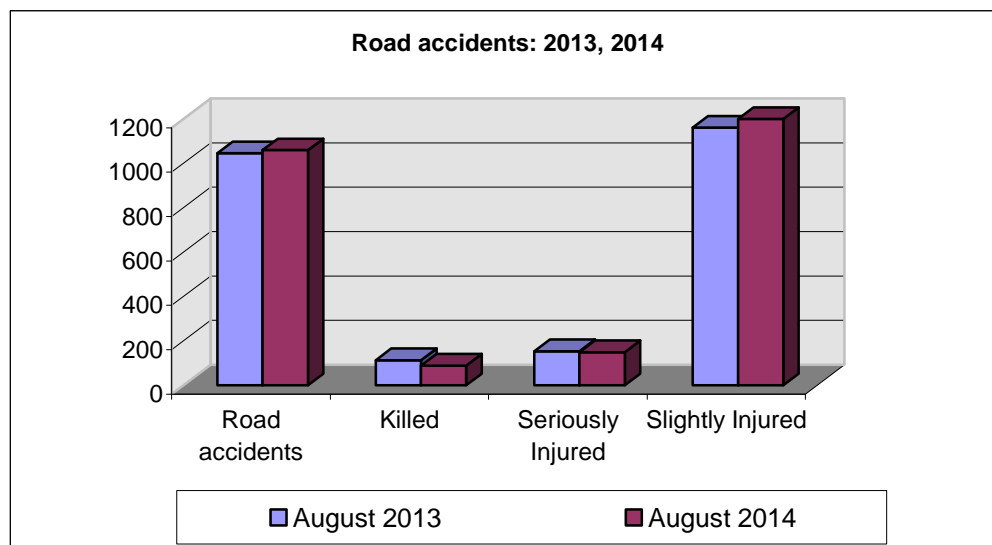
Piraeus, 31 October 2014

PRESS RELEASE

ROAD ACCIDENTS: August 2014

In August 2014 the road traffic accidents, which occurred in Greece resulting in injured or killed persons, increased by 1.3% in comparison with the corresponding month of 2013 (1,059 road accidents in August 2014 against 1,045 road accidents in August 2013).

Among the casualties of the injury-causing accidents that occurred in August 2014, 89 persons were killed, 149 persons were seriously injured and 1,252 persons were slightly injured. In contrast, in August 2013 the corresponding figures were: 113 persons killed, 153 seriously injured and 1,161 slightly injured. Therefore, road accident casualties in August 2014 recorded a decrease by 21.2% for persons killed, a decrease by 2.6% for persons seriously injured and an increase by 7.8% for persons slightly injured.



Contact:
Social Statistics Division
Justice and Public Order Statistics Section

D. Athanasopoulou
Tel : +30 213 1352767
Fax : +30 213 1352764

Table 1. Road accidents and casualties, by region (NUTS 2) and department - August 2013 and 2014

| Region and Department | Road Accidents | | | Killed | | | Seriously Injured | | | Slightly Injured | | |
|--|----------------|--------------|---------------|------------|-----------|---------------|-------------------|------------|---------------|------------------|--------------|---------------|
| | 2013 | 2014 | % | 2013 | 2014 | % | 2013 | 2014 | % | 2013 | 2014 | % |
| Greece, total | 1,045 | 1,059 | 1.3% | 113 | 89 | -21.2% | 153 | 149 | -2.6% | 1,161 | 1,252 | 7.8% |
| Anatoliki Makedonia, Thraki (East Macedonia and Thrace) | 61 | 69 | 13.1% | 9 | 7 | -22.2% | 15 | 14 | -6.7% | 66 | 73 | 10.6% |
| Drama | 8 | 10 | 25.0% | 1 | 1 | | 2 | 0 | | 7 | 10 | |
| Evros | 12 | 13 | 8.3% | 2 | 1 | | 4 | 2 | | 10 | 14 | |
| Kavala | 19 | 17 | -10.5% | 4 | 1 | | 6 | 4 | | 17 | 20 | |
| Xanthi | 10 | 18 | 80.0% | 1 | 3 | | 1 | 6 | | 14 | 18 | |
| Rodopi | 12 | 11 | -8.3% | 1 | 1 | | 2 | 2 | | 18 | 11 | |
| Kentriki Makedonia (Central Macedonia) | 219 | 176 | -19.6% | 21 | 11 | -47.6% | 20 | 17 | -15.0% | 255 | 212 | -16.9% |
| Imathia | 10 | 3 | -70.0% | 1 | 1 | | 3 | 1 | | 8 | 1 | |
| Thessaloniki | 149 | 130 | -12.8% | 8 | 5 | | 3 | 7 | | 181 | 166 | |
| Kilkis | 3 | 3 | 0.0% | 2 | 0 | | 0 | 0 | | 3 | 4 | |
| Pella | 9 | 8 | -11.1% | 6 | 1 | | 2 | 5 | | 7 | 5 | |
| Pieria | 14 | 7 | -50.0% | 1 | 0 | | 2 | 2 | | 13 | 6 | |
| Serres | 9 | 11 | 22.2% | 0 | 4 | | 4 | 1 | | 11 | 7 | |
| Chalkidiki | 25 | 14 | -44.0% | 3 | 0 | | 6 | 1 | | 32 | 23 | |
| Dytiki Makedonia (West Macedonia) | 7 | 13 | 85.7% | 5 | 2 | -60.0% | 0 | 3 | - | 6 | 31 | 416.7% |
| Grevena | 1 | 1 | 0.0% | 1 | 0 | | 0 | 0 | | 0 | 12 | |
| Kastoria | 2 | 2 | 0.0% | 2 | 1 | | 0 | 0 | | 2 | 2 | |
| Kozani | 3 | 10 | 233.3% | 1 | 1 | | 0 | 3 | | 3 | 17 | |
| Florina | 1 | 0 | -100.0% | 1 | 0 | | 0 | 0 | | 1 | 0 | |
| Ipeiros (Epirus) | 13 | 20 | 53.8% | 9 | 3 | -66.7% | 6 | 6 | 0.0% | 9 | 39 | 333.3% |
| Arta | 3 | 3 | 0.0% | 6 | 2 | | 2 | 0 | | 0 | 12 | |
| Thesprotia | 4 | 9 | 125.0% | 0 | 0 | | 1 | 2 | | 3 | 13 | |
| Ioannina | 4 | 2 | -50.0% | 2 | 0 | | 1 | 1 | | 3 | 9 | |
| Preveza | 2 | 6 | 200.0% | 1 | 1 | | 2 | 3 | | 3 | 5 | |
| Thessalia (Thessaly) | 40 | 31 | -22.5% | 8 | 7 | -12.5% | 11 | 6 | -45.5% | 37 | 32 | -13.5% |
| Karditsa | 5 | 9 | 80.0% | 1 | 2 | | 0 | 0 | | 5 | 14 | |
| Larisa | 14 | 15 | 7.1% | 3 | 1 | | 3 | 3 | | 16 | 16 | |
| Magnisia | 12 | 4 | -66.7% | 3 | 2 | | 7 | 2 | | 4 | 2 | |
| Trikala | 9 | 3 | -66.7% | 1 | 2 | | 1 | 1 | | 12 | 0 | |
| Ionioi Nisoi (Ionian Islands) | 37 | 23 | -37.8% | 4 | 2 | -50.0% | 15 | 7 | -53.3% | 35 | 27 | -22.9% |
| Zakynthos | 4 | 3 | -25.0% | 1 | 1 | | 1 | 1 | | 4 | 2 | |
| Kerkyra | 20 | 11 | -45.0% | 1 | 0 | | 9 | 3 | | 19 | 17 | |
| Kefallinia | 7 | 3 | -57.1% | 2 | 1 | | 3 | 1 | | 5 | 2 | |
| Lefkada | 6 | 6 | 0.0% | 0 | 0 | | 2 | 2 | | 7 | 6 | |

Table 1. Continued

| Region and Department | Road Accidents | | | Killed | | | Seriously Injured | | | Slightly Injured | | |
|-------------------------------------|----------------|------------|---------------|-----------|-----------|---------------|-------------------|-----------|---------------|------------------|------------|---------------|
| | 2013 | 2014 | % | 2013 | 2014 | % | 2013 | 2014 | % | 2013 | 2014 | % |
| Dytiki Ellas (West Greece) | 69 | 63 | -8.7% | 17 | 7 | -58.8% | 19 | 10 | -47.4% | 73 | 76 | 4.1% |
| Aitolia, Akarnania | 24 | 17 | -29.2% | 6 | 4 | | 6 | 2 | | 28 | 14 | |
| Achaia | 27 | 37 | 37.0% | 7 | 3 | | 5 | 8 | | 29 | 48 | |
| Ileia | 18 | 9 | -50.0% | 4 | 0 | | 8 | 0 | | 16 | 14 | |
| Sterea Ellas | 59 | 57 | -3.4% | 7 | 3 | -57.1% | 11 | 6 | -45.5% | 53 | 76 | 43.4% |
| Voiotia | 9 | 7 | -22.2% | 2 | 0 | | 2 | 0 | | 7 | 8 | |
| Evvoia | 24 | 26 | 8.3% | 3 | 2 | | 4 | 4 | | 17 | 40 | |
| Evrytania | 2 | 0 | -100.0% | 1 | 0 | | 1 | 0 | | 0 | 0 | |
| Fthiotida | 17 | 19 | 11.8% | 1 | 0 | | 3 | 1 | | 21 | 25 | |
| Fokida | 7 | 5 | -28.6% | 0 | 1 | | 1 | 1 | | 8 | 3 | |
| Attiki (Attica) | 373 | 423 | 13.4% | 13 | 22 | 69.2% | 17 | 24 | 41.2% | 431 | 507 | 17.6% |
| Peloponnisos (Peloponnese) | 69 | 81 | 17.4% | 6 | 5 | -16.7% | 11 | 13 | 18.2% | 94 | 94 | 0.0% |
| Argolida | 12 | 13 | 8.3% | 1 | 0 | | 1 | 1 | | 17 | 15 | |
| Arkadia | 13 | 12 | -7.7% | 2 | 1 | | 3 | 3 | | 18 | 10 | |
| Korinthia | 22 | 32 | 45.5% | 0 | 1 | | 4 | 5 | | 31 | 44 | |
| Lakonia | 10 | 10 | 0.0% | 3 | 3 | | 3 | 2 | | 9 | 7 | |
| Messinia | 12 | 14 | 16.7% | 0 | 0 | | 0 | 2 | | 19 | 18 | |
| Voreio Aigaio (North Aegean) | 10 | 18 | 80.0% | 0 | 0 | 0.0% | 1 | 4 | 300.0% | 14 | 22 | 57.1% |
| Lesvos | 7 | 10 | 42.9% | 0 | 0 | | 1 | 2 | | 11 | 9 | |
| Samos | 0 | 2 | - | 0 | 0 | | 0 | 1 | | 0 | 2 | |
| Chios | 3 | 6 | 100.0% | 0 | 0 | | 0 | 1 | | 3 | 11 | |
| Notio Aigaio (South Aegean) | 50 | 63 | 26.0% | 8 | 10 | 25.0% | 17 | 32 | 88.2% | 43 | 49 | 14.0% |
| Dodekanisos | 25 | 28 | 12.0% | 5 | 6 | | 8 | 8 | | 22 | 30 | |
| Kyklades | 25 | 35 | 40.0% | 3 | 4 | | 9 | 24 | | 21 | 19 | |
| Kriti (Crete) | 38 | 22 | -42.1% | 6 | 10 | 66.7% | 10 | 7 | -30.0% | 45 | 14 | -68.9% |
| Irakleio | 14 | 7 | -50.0% | 3 | 7 | | 7 | 2 | | 15 | 1 | |
| Lasithi | 6 | 4 | -33.3% | 1 | 1 | | 2 | 1 | | 3 | 2 | |
| Rethymni | 5 | 4 | -20.0% | 2 | 0 | | 0 | 1 | | 10 | 6 | |
| Chania | 13 | 7 | -46.2% | 0 | 2 | | 1 | 3 | | 17 | 5 | |

Table 2. Road accidents and casualties, for the period January - August of the years 2012, 2013 and 2014

| Period: | January - August | | | Percentage Change | |
|--------------------------|------------------|-------|-------|-------------------|-----------|
| | 2012 | 2013 | 2014 | 2013/2012 | 2014/2013 |
| Road accidents | 8,057 | 7,921 | 7,943 | -1.7 | 0.3 |
| Killed | 648 | 573 | 513 | -11.6 | -10.5 |
| Seriously injured | 967 | 907 | 757 | -6.2 | -16.5 |
| Slightly injured | 9,092 | 8,865 | 9,099 | -2.5 | 2.6 |
| Casualties-Total | 10,059 | 9,772 | 9,856 | -2.9 | 0.9 |

Diagram 1: Road accidents per 100,000 inhabitants

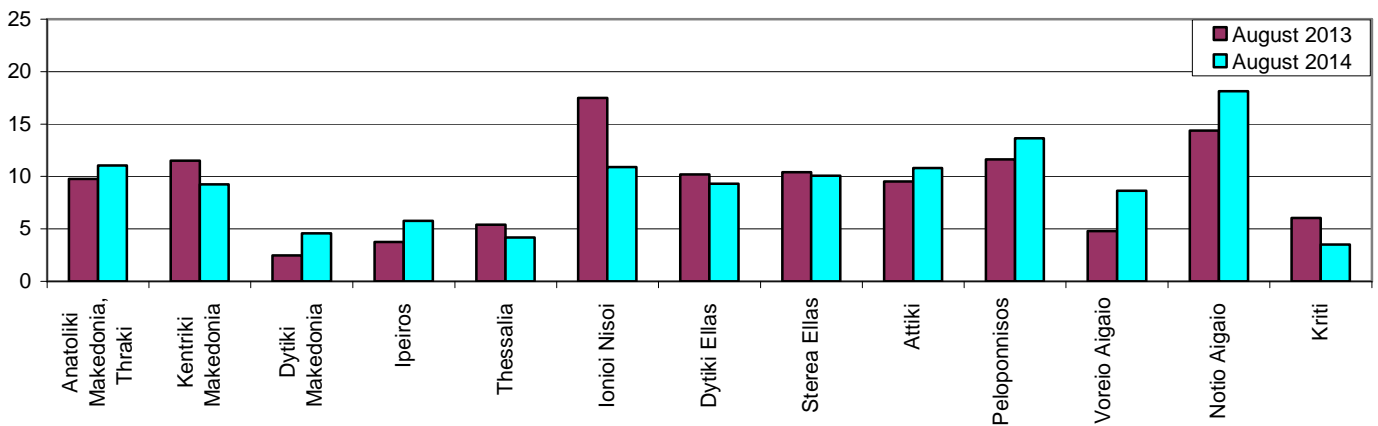


Diagram 2: Persons killed per 100,000 inhabitants

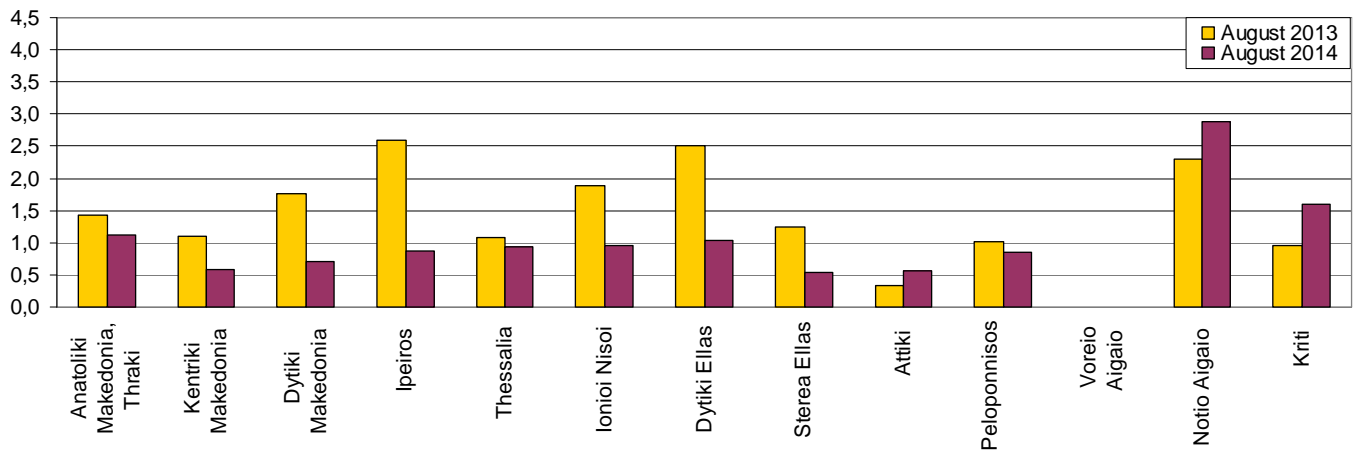


Diagram 3: Persons seriously injured per 100,000 inhabitants

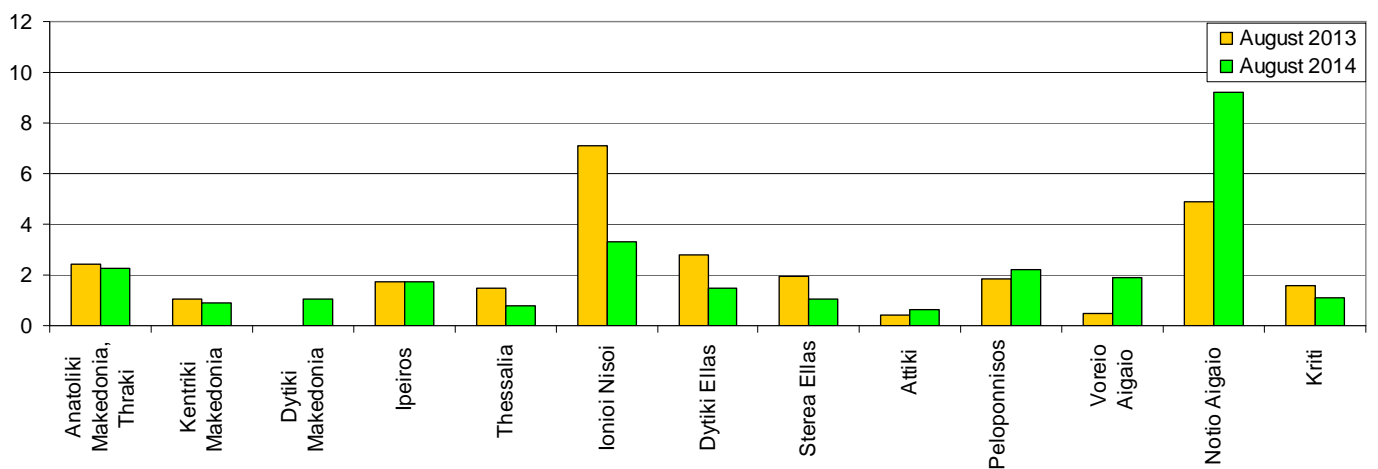
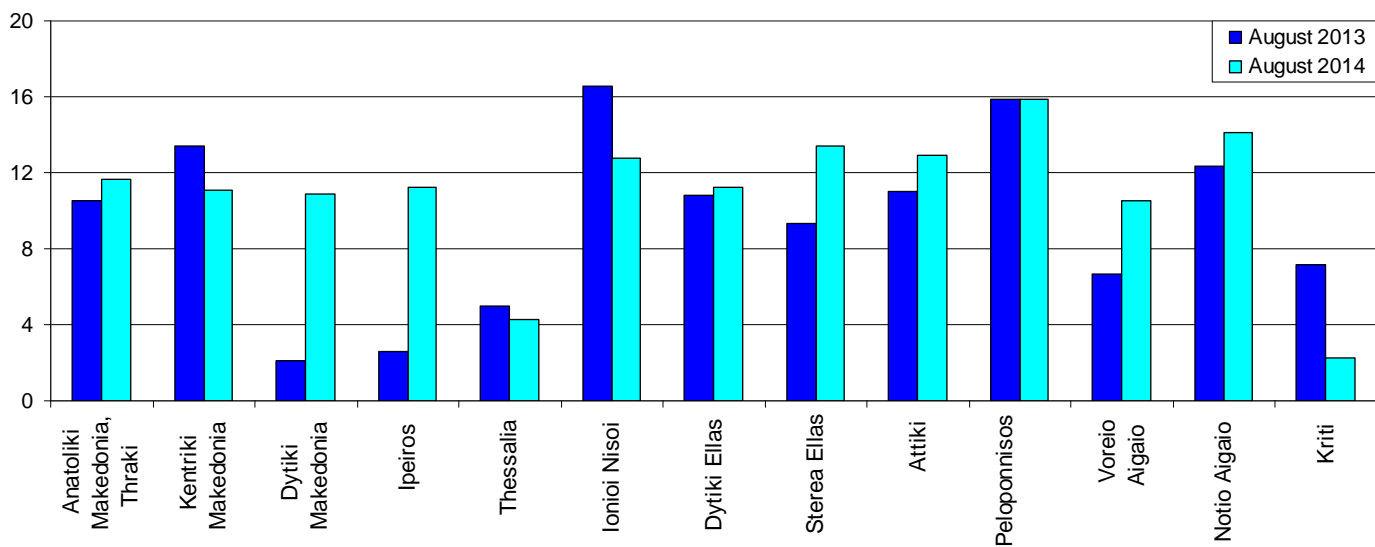


Diagram 4: Persons slightly injured per 100,000 inhabitants



EXPLANATORY NOTES

| | |
|---------------------------------|--|
| Survey on Road Accidents | <p>The survey on road accidents is conducted on a monthly basis and it records, for each Department of Greece and for each month separately, the number of accidents by fatal and/or non-fatal accident, as well as the number of persons injured by categories (drivers, passengers, pedestrians). On a yearly basis, road accidents are further analyzed.</p> <p>The competent agencies for filling in/collecting the questionnaires on road accidents are the local Police Authorities and the local Port Authorities of Greece.</p> <p>The lower level of analysis for the place where an injury road accident occurred is the settlement (oikismos), which is described by a 8-digit geographic code. Data are collected on a monthly basis.</p> <p>The main variables are the following: place of accident, kind of road, casualties, conditions of road surface and type of road.</p> |
| Legal basis | <p>The Survey on Road Traffic Accidents is governed by Council Decision 93/704/EC.</p> |
| Reference Period | <p>01.08.2014 to 31.08.2014</p> |
| Availability of Results | <p>Provisional data: 2 months after the accident Final data: 1 year after the reference year</p> |
| National Definitions | <p>Road accident (injury accident): Any accident involving at least one road motor vehicle in motion on a public road or square to which the public has access (excluding yards, industrial sites or vehicle depot of public transport enterprises), resulting in at least one injured or killed person. Accidents with only material damages are not included.</p> <p>Person killed: Any person killed immediately or dying within 30 days as a result of an injury accident (This national definition applies since 01.01.1996)</p> <p>Person injured: Any person who sustained an injury as result of an injury accident, and who normally needs medical treatment.</p> <p>Seriously injured: Any person who sustained an injury as result of an injury accident, such as brain damages, mutilation, multiple injuries, which may result in lack of awareness or which are life-threatening.</p> <p>Slightly injured: Any person injured who sustained minor and not life-threatening injuries.</p> <p>Vehicle: For the purposes of road accidents statistics, vehicles include motor vehicles, trolleybuses, motorcycles, bicycles, motorbikes, agricultural and road making machines, animal and hand-drawn vehicles. Railway vehicles are excluded, unless the road accident involves one of the aforementioned types of vehicles and therefore, railway vehicles are considered vehicles.</p> |
| Methodology | <p>The questionnaires of the survey are filled in by the local Police Authorities and the local Port Authorities as well.</p> |
| References | <p>More information about road accidents is available on ELSTAT's website and more specifically at the link: www.statistics.gr > Statistical Themes > Health – Social protection > Accidents > Road Traffic Accidents.</p> <p>It should be noted that previous press releases and time series are available on ELSTAT's website: www.statistics.gr</p> |