



HELLENIC REPUBLIC



HELLENIC STATISTICAL AUTHORITY

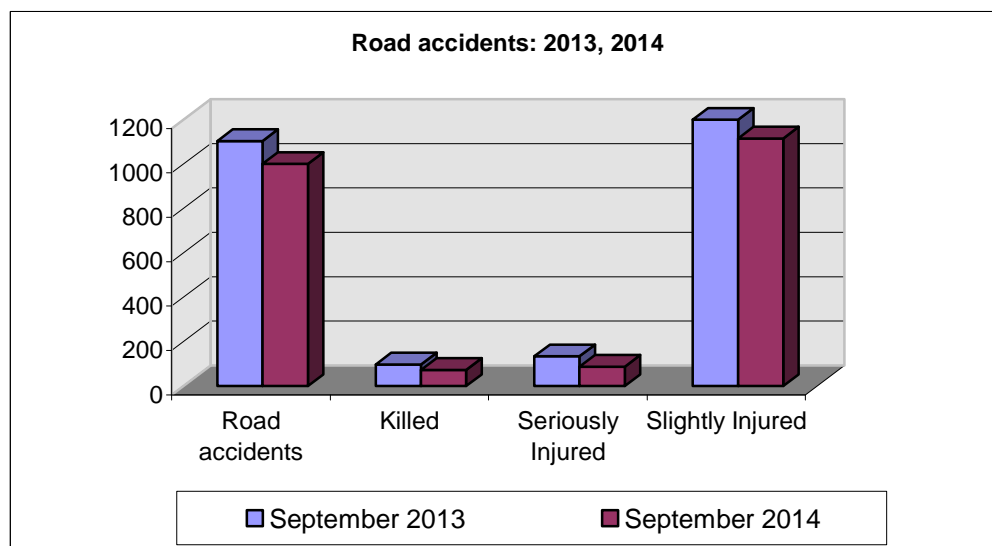
Piraeus, 28 November 2014

## PRESS RELEASE

### ROAD ACCIDENTS: September 2014

In September 2014 the road traffic accidents, which occurred in Greece resulting in injured or killed persons, decreased by 9.4% in comparison with the corresponding month of 2013 (1,000 road accidents in September 2014 against 1,104 road accidents in September 2013).

Among the casualties of the injury-causing accidents that occurred in September 2014, 73 persons were killed, 87 persons were seriously injured and 1,116 persons were slightly injured. In contrast, in September 2013 the corresponding figures were: 97 persons killed, 134 seriously injured and 1,255 slightly injured. Therefore, road accident casualties in September 2014 recorded a decrease by 24.7% for persons killed, by 35.1% for persons seriously injured and by 11.1% for persons slightly injured.



Contact:  
Social Statistics Division  
Justice and Public Order Statistics Section

D. Athanasopoulou  
Tel : +30 213 1352767  
Fax : +30 213 1352764

Table 1. Road accidents and casualties, by region (NUTS 2) and department - September 2013 and 2014

Region and Department	Road Accidents			Killed			Seriously Injured			Slightly Injured		
	2013	2014	%	2013	2014	%	2013	2014	%	2013	2014	%
<b>Greece. total</b>	<b>1,104</b>	<b>1,000</b>	<b>-9.4%</b>	<b>97</b>	<b>73</b>	<b>-24.7%</b>	<b>134</b>	<b>87</b>	<b>-35.1%</b>	<b>1,255</b>	<b>1,116</b>	<b>-11.1%</b>
<b>Anatoliki Makedonia, Thraki (East Macedonia and Thrace)</b>	<b>34</b>	<b>40</b>	<b>17.6%</b>	<b>7</b>	<b>3</b>	<b>-57.1%</b>	<b>4</b>	<b>2</b>	<b>-50.0%</b>	<b>35</b>	<b>45</b>	<b>28.6%</b>
Drama	6	8	33.3%	3	0		0	1		7	10	
Evros	8	9	12.5%	2	2		1	1		8	9	
Kavala	9	7	-22.2%	1	1		1	0		7	6	
Xanthi	5	8	60.0%	0	0		0	0		9	10	
Rodopi	6	8	33.3%	1	0		2	0		4	10	
<b>Kentriki Makedonia (Central Macedonia)</b>	<b>223</b>	<b>198</b>	<b>-11.2%</b>	<b>16</b>	<b>12</b>	<b>-25.0%</b>	<b>16</b>	<b>5</b>	<b>-68.8%</b>	<b>271</b>	<b>235</b>	<b>-13.3%</b>
Imathia	13	4	-69.2%	4	0		1	0		11	6	
Thessaloniki	172	160	-7.0%	9	5		6	1		217	196	
Kilkis	4	12	200.0%	0	4		0	1		7	9	
Pella	6	4	-33.3%	1	0		3	1		4	5	
Pieria	13	3	-76.9%	1	0		4	0		9	3	
Serres	6	5	-16.7%	0	2		1	0		13	5	
Chalkidiki	9	10	11.1%	1	1		1	2		10	11	
<b>Dytiki Makedonia (West Macedonia)</b>	<b>11</b>	<b>5</b>	<b>-54.5%</b>	<b>2</b>	<b>1</b>	<b>-50.0%</b>	<b>4</b>	<b>0</b>	<b>-100.0%</b>	<b>10</b>	<b>6</b>	<b>-40.0%</b>
Grevena	1	1	0.0%	0	0		0	0		1	3	
Kastoria	3	2	-33.3%	1	1		0	0		2	1	
Kozani	5	2	-60.0%	1	0		3	0		4	2	
Florina	2	0	-100.0%	0	0		1	0		3	0	
<b>Ipeiros (Epirus)</b>	<b>15</b>	<b>14</b>	<b>-6.7%</b>	<b>4</b>	<b>7</b>	<b>75.0%</b>	<b>8</b>	<b>4</b>	<b>-50.0%</b>	<b>14</b>	<b>5</b>	<b>-64.3%</b>
Arta	3	3	0.0%	1	1		1	2		1	0	
Thesprotia	4	2	-50.0%	0	1		0	0		5	1	
Ioannina	6	5	-16.7%	2	3		3	1		7	2	
Preveza	2	4	100.0%	1	2		4	1		1	2	
<b>Thessalia (Thessaly)</b>	<b>26</b>	<b>18</b>	<b>-30.8%</b>	<b>4</b>	<b>4</b>	<b>0.0%</b>	<b>7</b>	<b>6</b>	<b>-14.3%</b>	<b>24</b>	<b>23</b>	<b>-4.2%</b>
Karditsa	7	7	0.0%	0	0		1	2		8	7	
Larisa	11	5	-54.5%	1	3		3	2		10	11	
Magnisia	2	4	100.0%	0	1		0	1		4	4	
Trikala	6	2	-66.7%	3	0		3	1		2	1	
<b>Ionioi Nisoi (Ionian Islands)</b>	<b>16</b>	<b>17</b>	<b>6.3%</b>	<b>3</b>	<b>2</b>	<b>-33.3%</b>	<b>1</b>	<b>5</b>	<b>400.0%</b>	<b>20</b>	<b>17</b>	<b>-15.0%</b>
Zakynthos	4	3	-25.0%	1	0		1	1		4	2	
Kerkyra	9	8	-11.1%	1	2		0	2		13	9	
Kefallinia	3	3	0.0%	1	0		0	0		3	4	
Lefkada	0	3	-	0	0		0	2		0	2	

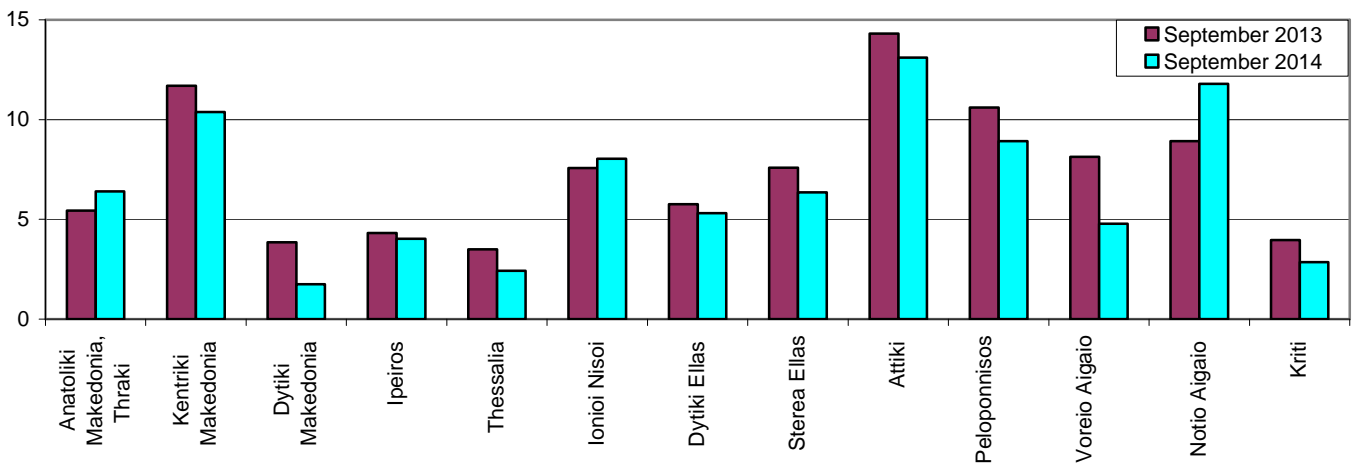
Table 1. Continued

Region and Department	Road Accidents			Killed			Seriously Injured			Slightly Injured		
	2013	2014	%	2013	2014	%	2013	2014	%	2013	2014	%
<b>Dytiki Ellas (West Greece)</b>	<b>39</b>	<b>36</b>	<b>-7.7%</b>	<b>7</b>	<b>1</b>	<b>-85.7%</b>	<b>10</b>	<b>4</b>	<b>-60.0%</b>	<b>48</b>	<b>47</b>	<b>-2.1%</b>
Aitolia, Akarnania	13	13	0.0%	1	0		3	1		22	20	
Achaia	17	10	-41.2%	5	0		6	1		14	15	
Ileia	9	13	44.4%	1	1		1	2		12	12	
<b>Sterea Ellas</b>	<b>43</b>	<b>36</b>	<b>-16.3%</b>	<b>7</b>	<b>5</b>	<b>-28.6%</b>	<b>11</b>	<b>3</b>	<b>-72.7%</b>	<b>36</b>	<b>45</b>	<b>25.0%</b>
Voiotia	8	6	-25.0%	3	1		0	0		9	7	
Evvoia	13	14	7.7%	1	0		5	2		9	16	
Evrytania	3	0	-100.0%	0	0		0	0		3	0	
Fthiotida	17	16	-5.9%	2	4		6	1		14	22	
Fokida	2	0	-100.0%	1	0		0	0		1	0	
<b>Attiki (Attica)</b>	<b>561</b>	<b>514</b>	<b>-8.4%</b>	<b>21</b>	<b>24</b>	<b>14.3%</b>	<b>34</b>	<b>21</b>	<b>-38.2%</b>	<b>666</b>	<b>583</b>	<b>-12.5%</b>
<b>Peloponnisos (Peloponnese)</b>	<b>63</b>	<b>53</b>	<b>-15.9%</b>	<b>11</b>	<b>1</b>	<b>-90.9%</b>	<b>14</b>	<b>13</b>	<b>-7.1%</b>	<b>68</b>	<b>56</b>	<b>-17.6%</b>
Argolida	14	7	-50.0%	5	0		4	4		14	3	
Arkadia	11	6	-45.5%	0	0		2	0		13	8	
Korinthia	15	17	13.3%	0	0		4	3		16	24	
Lakonia	12	7	-41.7%	6	1		2	2		10	9	
Messinia	11	16	45.5%	0	0		2	4		15	12	
<b>Voreio Aigaio (North Aegean)</b>	<b>17</b>	<b>10</b>	<b>-41.2%</b>	<b>4</b>	<b>1</b>	<b>-75.0%</b>	<b>4</b>	<b>5</b>	<b>25.0%</b>	<b>15</b>	<b>8</b>	<b>-46.7%</b>
Lesvos	15	7	-53.3%	3	0		2	4		11	6	
Samos	1	0	-100.0%	1	0		2	0		1	0	
Chios	1	3	200.0%	0	1		0	1		3	2	
<b>Notio Aigaio (South Aegean)</b>	<b>31</b>	<b>41</b>	<b>32.3%</b>	<b>3</b>	<b>5</b>	<b>66.7%</b>	<b>12</b>	<b>13</b>	<b>8.3%</b>	<b>28</b>	<b>33</b>	<b>17.9%</b>
Dodekanisos	17	23	35.3%	3	5		3	5		17	17	
Kyklades	14	18	28.6%	0	0		9	8		11	16	
<b>Kriti (Crete)</b>	<b>25</b>	<b>18</b>	<b>-28.0%</b>	<b>8</b>	<b>7</b>	<b>-12.5%</b>	<b>9</b>	<b>6</b>	<b>-33.3%</b>	<b>20</b>	<b>13</b>	<b>-35.0%</b>
Irakleio	6	5	-16.7%	2	3		4	2		6	3	
Lasithi	4	2	-50.0%	3	1		0	0		1	2	
Rethymni	1	1	0.0%	1	1		0	0		0	1	
Chania	14	10	-28.6%	2	2		5	4		13	7	

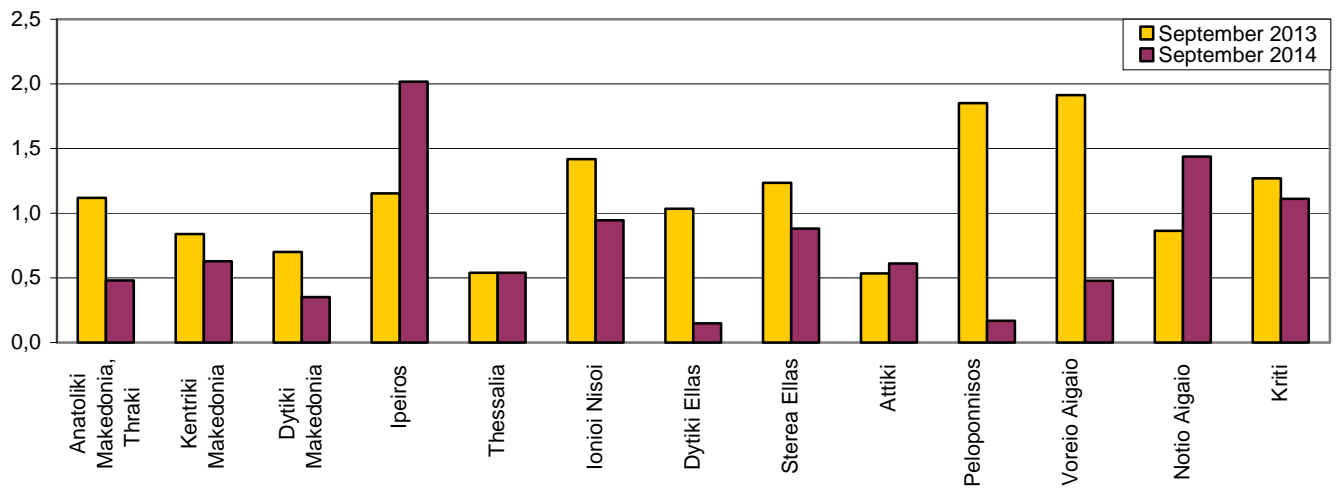
Table 2. Road accidents and casualties, for the period January - September of the years 2012, 2013 and 2014

Period:	January - September			Percentage Change	
	2012	2013	2014	2013/2012	2014/2013
<b>Road accidents</b>	9,144	9,025	8,943	-1.3	-0.9
<b>Killed</b>	742	670	586	-9.7	-12.5
<b>Seriously injured</b>	1,100	1,041	844	-5.4	-18.9
<b>Slightly injured</b>	10,314	10,120	10,215	-1.9	0.9
<b>Casualties-Total</b>	11,414	11,161	11,059	-2.2	-0.9

**Diagram 1: Road accidents per 100,000 inhabitants**



**Diagram 2: Persons killed per 100,000 inhabitants**



**Diagram 3: Persons seriously injured per 100,000 inhabitants**

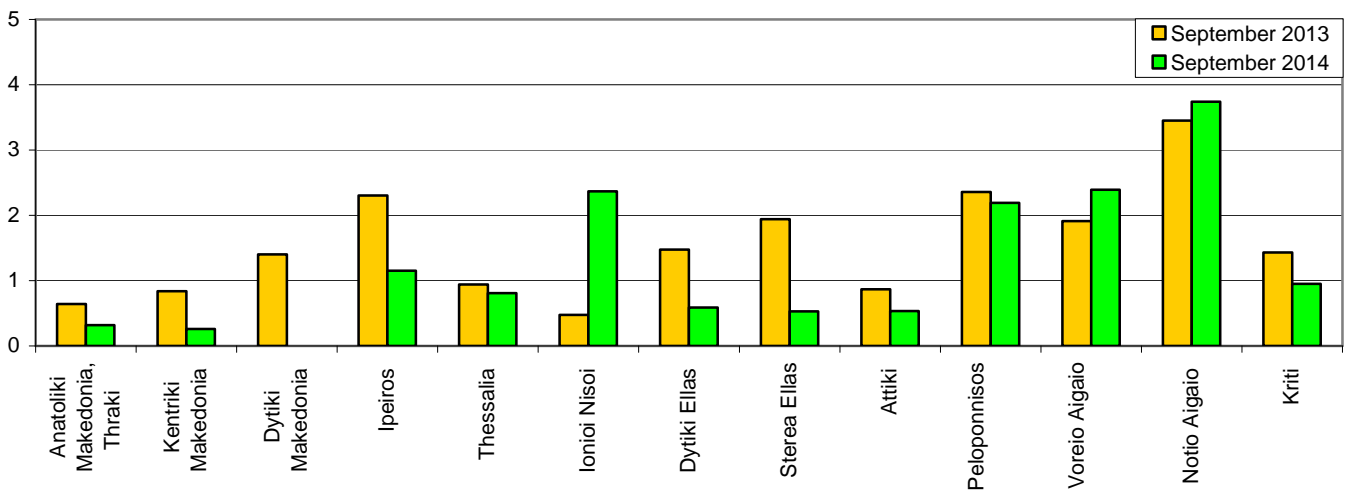
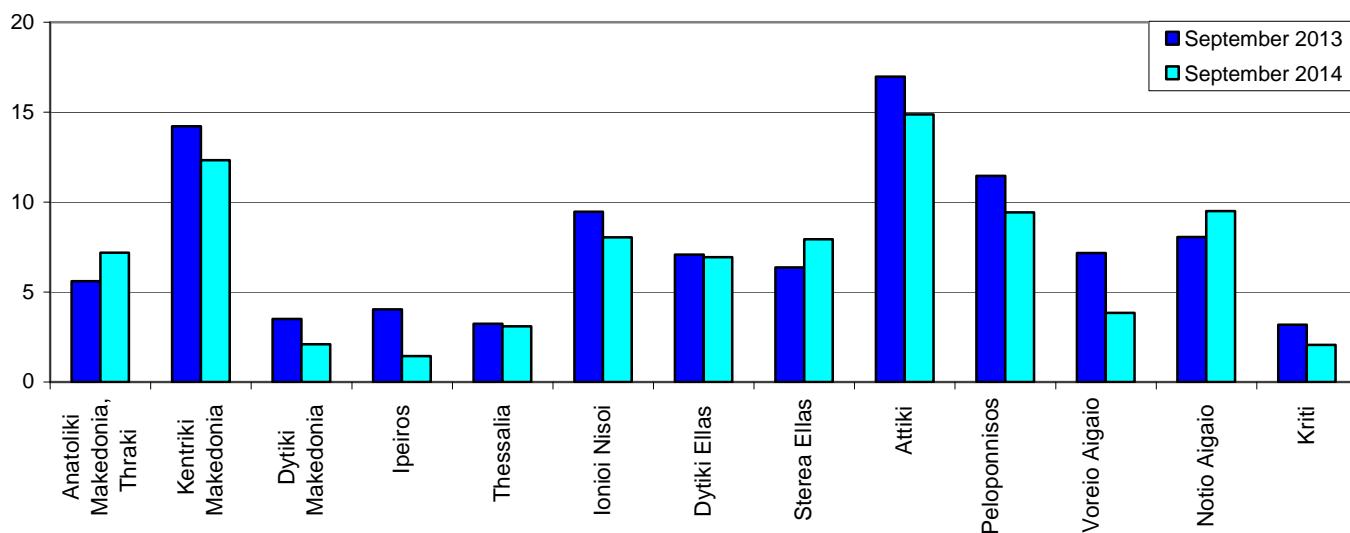


Diagram 4: Persons slightly injured per 100,000 inhabitants



## EXPLANATORY NOTES

<b>Survey on Road Accidents</b>	<p>The survey on road accidents is conducted on a monthly basis and it records, for each Department of Greece and for each month separately, the number of accidents by fatal and/or non-fatal accident, as well as the number of persons injured by categories (drivers, passengers, pedestrians). On a yearly basis, road accidents are further analyzed.</p> <p>The competent agencies for filling in/collecting the questionnaires on road accidents are the local Police Authorities and the local Port Authorities of Greece.</p> <p>The lower level of analysis for the place where an injury road accident occurred is the settlement (oikismos), which is described by a 8-digit geographic code. Data are collected on a monthly basis.</p> <p>The main variables are the following: place of accident, kind of road, casualties, conditions of road surface and type of road.</p>
<b>Legal basis</b>	<p>The Survey on Road Traffic Accidents is governed by Council Decision 93/704/EC.</p>
<b>Reference Period</b>	<p>01.09.2014 to 30.09.2014</p>
<b>Availability of Results</b>	<p>Provisional data: 2 months after the accident Final data: 1 year after the reference year</p>
<b>National Definitions</b>	<p><b>Road accident</b> (injury accident): Any accident involving at least one road motor vehicle in motion on a public road or square to which the public has access (excluding yards, industrial sites or vehicle depot of public transport enterprises), resulting in at least one injured or killed person. Accidents with only material damages are not included.</p> <p><b>Person killed:</b> Any person killed immediately or dying within 30 days as a result of an injury accident (This national definition applies since 01.01.1996)</p> <p><b>Person injured:</b> Any person who sustained an injury as result of an injury accident, and who normally needs medical treatment.</p> <p><b>Seriously injured:</b> Any person who sustained an injury as result of an injury accident, such as brain damages, mutilation, multiple injuries, which may result in lack of awareness or which are life-threatening.</p> <p><b>Slightly injured:</b> Any person injured who sustained minor and not life-threatening injuries.</p> <p><b>Vehicle:</b> For the purposes of road accidents statistics, vehicles include motor vehicles, trolleybuses, motorcycles, bicycles, motorbikes, agricultural and road making machines, animal and hand-drawn vehicles. Railway vehicles are excluded, unless the road accident involves one of the aforementioned types of vehicles and therefore, railway vehicles are considered vehicles.</p>
<b>Methodology</b>	<p>The questionnaires of the survey are filled in by the local Police Authorities and the local Port Authorities as well.</p>
<b>References</b>	<p>More information about road accidents is available on ELSTAT's website and more specifically at the link: <a href="http://www.statistics.gr">www.statistics.gr</a> &gt; Statistical Themes &gt; Health – Social protection &gt; Accidents &gt; Road Traffic Accidents.</p> <p>It should be noted that previous press releases and time series are available on ELSTAT's website: <a href="http://www.statistics.gr">www.statistics.gr</a></p>