



HELLENIC REPUBLIC



HELLENIC STATISTICAL AUTHORITY

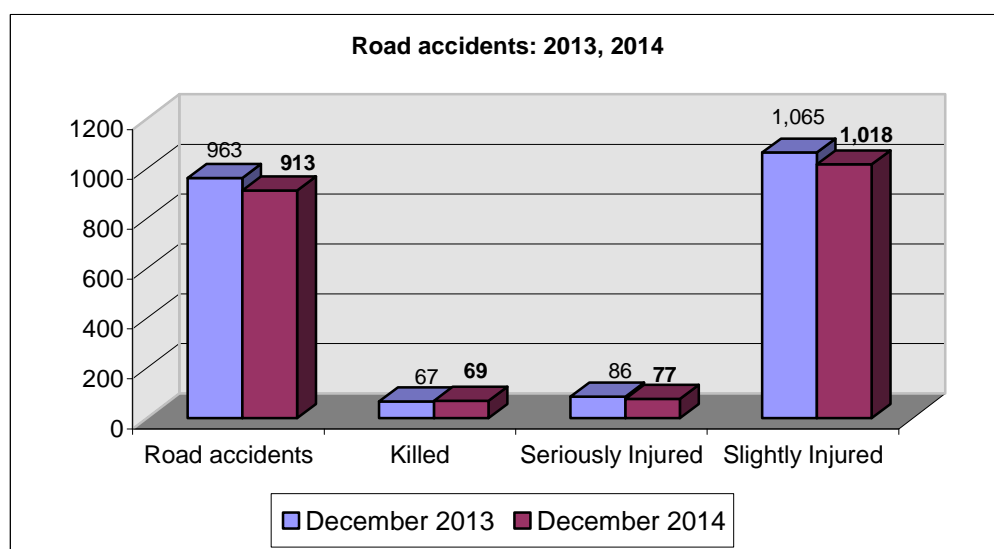
Piraeus, 27 February 2015

PRESS RELEASE

ROAD ACCIDENTS: December 2014

In December 2014 the road traffic accidents, which occurred in Greece resulting in injured or killed persons, decreased by 5.2% in comparison with the corresponding month of 2013 (913 road accidents in December 2014 against 963 road accidents in December 2013).

Among the casualties of the injury-causing accidents that occurred in December 2014, 69 persons were killed, 77 persons were seriously injured and 1,018 persons were slightly injured. In contrast, in December 2013 the corresponding figures were: 67 persons killed, 86 seriously injured and 1,065 slightly injured. Therefore, road accident casualties in December 2014 recorded an increase by 3.0% for persons killed, a decrease by 10.5% for persons seriously injured and by 4.4% for persons slightly injured.



Contact:
Social Statistics Division
Justice and Public Order Statistics Section

D. Athanasopoulou
Tel : +30 213 1352767
Fax : +30 213 1352764

Table 1. Road accidents and casualties, by region (NUTS 2) and department - December 2013 and 2014

Region and Department	Road Accidents			Killed			Seriously Injured			Slightly Injured		
	2013	2014	%	2013	2014	%	2013	2014	%	2013	2014	%
Greece. total	963	913	-5.2%	67	69	3.0%	86	77	-10.5%	1,065	1,018	-4.4%
Anatoliki Makedonia, Thraki (East Macedonia and Thrace)	31	25	-19.4%	2	0	-100.0%	11	4	-63.6%	28	24	-14.3%
Drama	6	5	-16.7%	1	0		0	1		5	4	
Evros	9	3	-66.7%	1	0		3	0		10	3	
Kavala	5	9	80.0%	0	0		4	3		1	7	
Xanthi	9	3	-66.7%	0	0		3	0		10	3	
Rodopi	2	5	150.0%	0	0		1	0		2	7	
Kentriki Makedonia (Central Macedonia)	215	188	-12.6%	9	13	44.4%	5	11	120.0%	272	204	-25.0%
Imathia	10	4	-60.0%	0	1		0	0		13	4	
Thessaloniki	181	162	-10.5%	6	4		2	6		232	178	
Kilkis	2	4	100.0%	0	1		0	0		5	4	
Pella	2	4	100.0%	1	1		0	3		2	3	
Pieria	6	4	-33.3%	0	1		1	0		7	4	
Serres	6	6	0.0%	1	3		1	1		4	2	
Chalkidiki	8	4	-50.0%	1	2		1	1		9	9	
Dytiki Makedonia (West Macedonia)	4	9	125.0%	0	1	-	2	1	-50.0%	3	13	333.3%
Grevena	1	3	200.0%	0	1		0	1		2	5	
Kastoria	1	2	100.0%	0	0		1	0		0	2	
Kozani	2	4	100.0%	0	0		1	0		1	6	
Florina	0	0	0.0%	0	0		0	0		0	0	
Ipeiros (Epirus)	10	7	-30.0%	4	1	-75.0%	3	2	-33.3%	6	5	-16.7%
Arta	3	0	-100.0%	2	0		1	0		0	0	
Thesprotia	4	4	0.0%	1	0		1	1		2	3	
Ioannina	1	3	200.0%	1	1		1	1		2	2	
Preveza	2	0	-100.0%	0	0		0	0		2	0	
Thessalia (Thessaly)	28	12	-57.1%	8	5	-37.5%	5	0	-100.0%	25	10	-60.0%
Karditsa	5	3	-40.0%	1	0		1	0		4	5	
Larisa	8	4	-50.0%	3	3		2	0		11	1	
Magnisia	9	3	-66.7%	3	2		1	0		6	2	
Trikala	6	2	-66.7%	1	0		1	0		4	2	
Ionioi Nisoi (Ionian Islands)	8	10	25.0%	1	1	0.0%	1	1	0.0%	6	11	83.3%
Zakynthos	0	1	-	0	0		0	0		0	1	
Kerkyra	4	7	75.0%	1	1		1	1		2	7	
Kefallinia	2	1	-50.0%	0	0		0	0		2	2	
Lefkada	2	1	-50.0%	0	0		0	0		2	1	

Table 1. Continued

Region and Department	Road Accidents			Killed			Seriously Injured			Slightly Injured		
	2013	2014	%	2013	2014	%	2013	2014	%	2013	2014	%
Dytiki Ellas (West Greece)	49	43	-12.2%	7	14	100.0%	5	8	60.0%	50	48	-4.0%
Aitolia, Akarnania	17	14	-17.6%	2	3		1	0		19	18	
Achaia	23	23	0.0%	1	7		2	7		26	26	
Ileia	9	6	-33.3%	4	4		2	1		5	4	
Sterea Ellas	25	28	12.0%	3	3	0.0%	5	5	0.0%	27	31	14.8%
Voiotia	4	3	-25.0%	0	2		0	1		6	2	
Evvoia	12	14	16.7%	2	0		3	2		12	15	
Evrytania	0	2	-	0	0		0	0		0	4	
Fthiotida	9	8	-11.1%	1	1		2	1		9	10	
Fokida	0	1	-	0	0		0	1		0	0	
Attiki (Attica)	510	523	2.5%	20	16	-20.0%	23	34	47.8%	575	610	6.1%
Peloponnisos (Peloponnese)	47	42	-10.6%	5	4	-20.0%	14	7	-50.0%	44	48	9.1%
Argolida	7	9	28.6%	0	0		1	1		6	10	
Arkadia	9	7	-22.2%	2	2		4	1		7	8	
Korinthia	14	11	-21.4%	0	1		6	1		13	11	
Lakonia	6	3	-50.0%	2	0		1	1		6	6	
Messinia	11	12	9.1%	1	1		2	3		12	13	
Voreio Aigaio (North Aegean)	5	6	20.0%	1	3	200.0%	1	1	0.0%	5	3	-40.0%
Lesvos	3	5	66.7%	0	2		1	1		4	3	
Samos	0	1	-	0	1		0	0		0	0	
Chios	2	0	-100.0%	1	0		0	0		1	0	
Notio Aigaio (South Aegean)	16	10	-37.5%	0	2	-	6	2	-66.7%	20	7	-65.0%
Dodekanisos	9	8	-11.1%	0	1		4	2		12	6	
Kyklades	7	2	-71.4%	0	1		2	0		8	1	
Kriti (Crete)	15	10	-33.3%	7	6	-14.3%	5	1	-80.0%	4	4	0.0%
Irakleio	7	2	-71.4%	2	1		4	0		2	1	
Lasithi	1	4	300.0%	1	1		0	1		0	2	
Rethymni	0	0	0.0%	0	0		0	0		0	0	
Chania	7	4	-42.9%	4	4		1	0		2	1	

Table 2. Road accidents and casualties, for the period January - December of the years 2012, 2013 and 2014

Period:	January - December			Percentage Change	
	2012	2013	2014	2013/2012	2014/2013
Road accidents	12,231	12,072	11,752	-1.3	-2.7
Killed	984	874	793	-11.2	-9.3
Seriously injured	1,422	1,303	1,082	-8.4	-17.0
Slightly injured	13,791	13,509	13,360	-2.0	-1.1
Casualties-Total	15,213	14,812	14,442	-2.6	-2.5

Diagram 1: Road accidents per 100,000 inhabitants

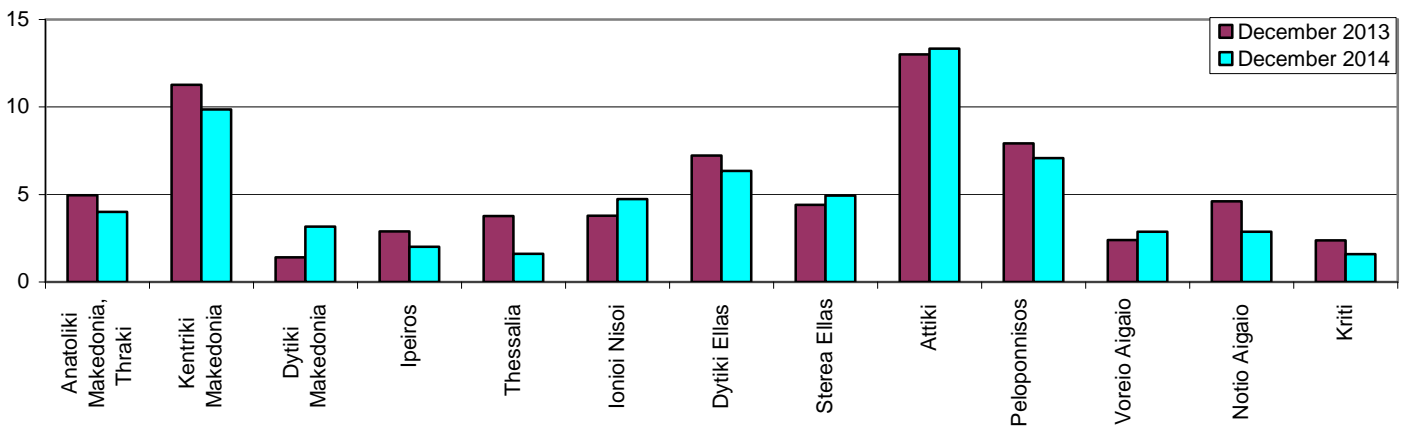


Diagram 2: Persons killed per 100,000 inhabitants

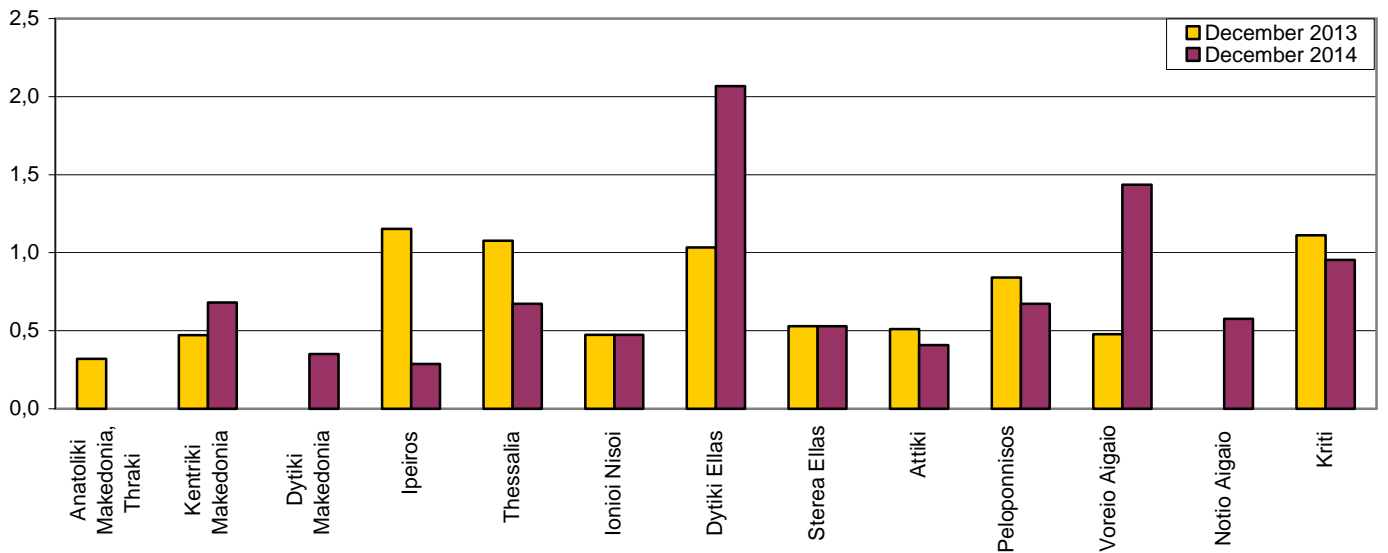


Diagram 3: Persons seriously injured per 100,000 inhabitants

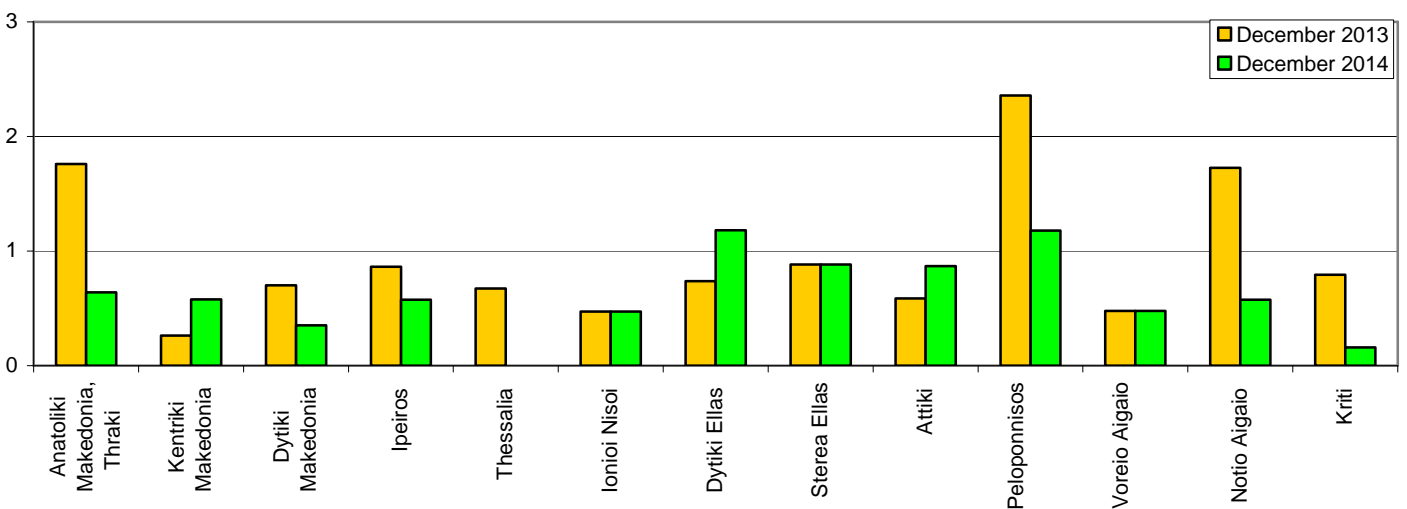
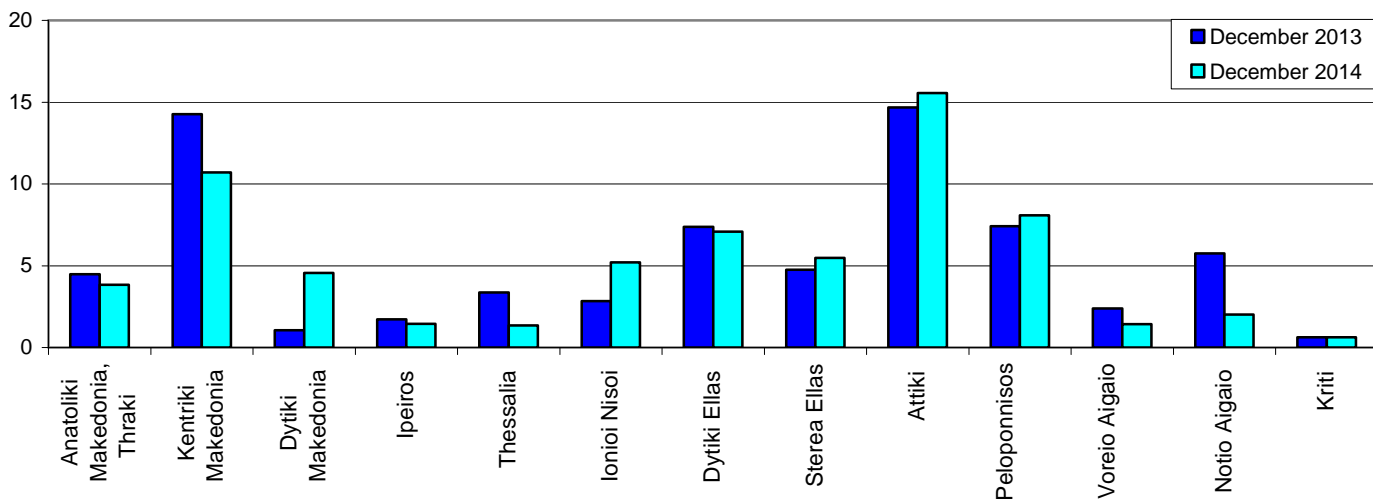


Diagram 4: Persons slightly injured per 100,000 inhabitants



EXPLANATORY NOTES

Survey on Road Accidents	<p>The survey on road accidents is conducted on a monthly basis and it records, for each Department of Greece and for each month separately, the number of accidents by fatal and/or non-fatal accident, as well as the number of persons injured by categories (drivers, passengers, pedestrians). On a yearly basis, road accidents are further analyzed.</p> <p>The competent agencies for filling in/collecting the questionnaires on road accidents are the local Police Authorities and the local Port Authorities of Greece.</p> <p>The lower level of analysis for the place where an injury road accident occurred is the settlement (oikismos), which is described by a 8-digit geographic code. Data are collected on a monthly basis.</p> <p>The main variables are the following: place of accident, kind of road, casualties, conditions of road surface and type of road.</p>
Legal basis	<p>The Survey on Road Traffic Accidents is governed by Council Decision 93/704/EC.</p>
Reference Period	<p>01.12.2014 to 31.12.2014</p>
Availability of Results	<p>Provisional data: 2 months after the accident Final data: 1 year after the reference year</p>
National Definitions	<p>Road accident (injury accident): Any accident involving at least one road motor vehicle in motion on a public road or square to which the public has access (excluding yards, industrial sites or vehicle depot of public transport enterprises), resulting in at least one injured or killed person. Accidents with only material damages are not included.</p> <p>Person killed: Any person killed immediately or dying within 30 days as a result of an injury accident (This national definition applies since 01.01.1996)</p> <p>Person injured: Any person who sustained an injury as result of an injury accident, and who normally needs medical treatment.</p> <p>Seriously injured: Any person who sustained an injury as result of an injury accident, such as brain damages, mutilation, multiple injuries, which may result in lack of awareness or which are life-threatening.</p> <p>Slightly injured: Any person injured who sustained minor and not life-threatening injuries.</p> <p>Vehicle: For the purposes of road accidents statistics, vehicles include motor vehicles, trolleybuses, motorcycles, bicycles, motorbikes, agricultural and road making machines, animal and hand-drawn vehicles. Railway vehicles are excluded, unless the road accident involves one of the aforementioned types of vehicles and therefore, railway vehicles are considered vehicles.</p>
Methodology	<p>The questionnaires of the survey are filled in by the local Police Authorities and the local Port Authorities as well.</p>
References	<p>More information about road accidents is available on ELSTAT's website and more specifically at the link: www.statistics.gr > Statistical Themes > Health – Social protection > Accidents > Road Traffic Accidents.</p> <p>It should be noted that previous press releases and time series are available on ELSTAT's website: www.statistics.gr</p>