



HELLENIC REPUBLIC



HELLENIC STATISTICAL AUTHORITY

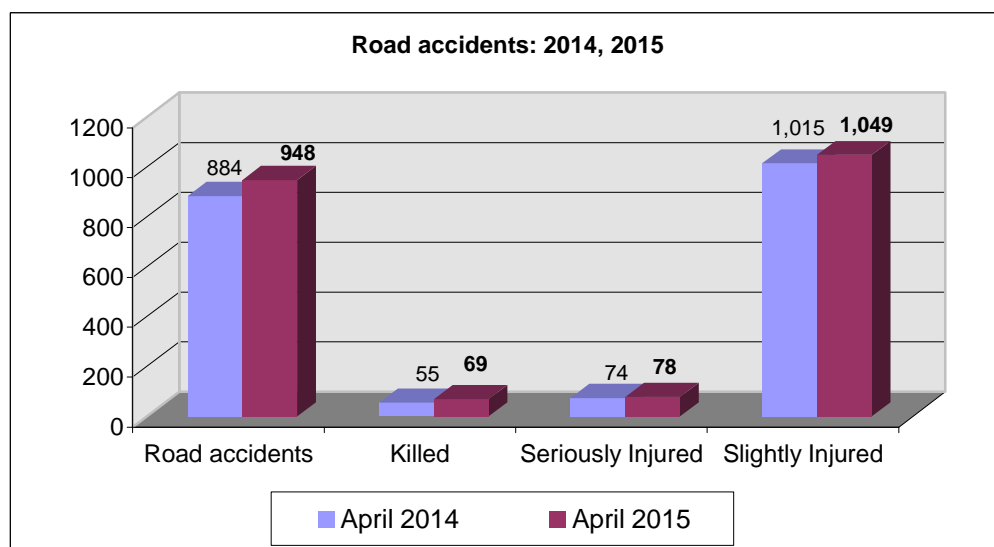
Piraeus, 30 June 2015

PRESS RELEASE

ROAD ACCIDENTS: April 2015

In April 2015 the road traffic accidents, which occurred in Greece resulting in injured or killed persons, increased by 7.2% in comparison with the corresponding month of 2014 (948 road accidents in April 2015 against 884 road accidents in April 2014).

Among the casualties of the injury-causing accidents that occurred in April 2015, 69 persons were killed, 78 persons were seriously injured and 1,049 persons were slightly injured. In contrast, in April 2014 the corresponding figures were: 55 persons killed, 74 seriously injured and 1,015 slightly injured. Therefore, road accident casualties in April 2015 recorded an increase by 25.5% for persons killed, by 5.4% for persons seriously injured and by 3.3% for persons slightly injured.



Contact:
Social Statistics Division
Justice and Public Order Statistics Section

D. Athanasopoulou
Tel : +30 213 1352767
Fax : +30 213 1352764

Table 1. Road accidents and casualties, by region (NUTS 2) and department - April 2014 and 2015

Region and Department	Road Accidents			Killed			Seriously Injured			Slightly Injured		
	2014	2015	%	2014	2015	%	2014	2015	%	2014	2015	%
Greece total	884	948	7.2%	55	69	25.5%	74	78	5.4%	1,015	1,049	3.3%
Anatoliki Makedonia, Thraki (East Macedonia and Thrace)	32	40	25.0%	0	6	-	5	3	-40.0%	42	44	4.8%
Drama	3	10	233.3%	0	2		1	0		4	12	
Evros	5	5	0.0%	0	1		0	1		6	3	
Kavala	8	5	-37.5%	0	0		3	1		8	5	
Xanthi	5	19	280.0%	0	3		0	1		9	23	
Rodopi	11	1	-90.9%	0	0		1	0		15	1	
Kentriki Makedonia (Central Macedonia)	168	178	6.0%	7	6	-14.3%	9	8	-11.1%	212	241	13.7%
Imathia	1	6	500.0%	0	0		0	3		1	10	
Thessaloniki	134	149	11.2%	3	4		4	2		167	205	
Kilkis	7	4	-42.9%	0	0		0	1		14	6	
Pella	7	4	-42.9%	3	2		2	0		5	4	
Pieria	8	3	-62.5%	0	0		2	1		9	2	
Serres	6	7	16.7%	1	0		1	0		11	9	
Chalkidiki	5	5	0.0%	0	0		0	1		5	5	
Dytiki Makedonia (West Macedonia)	5	9	80.0%	1	1	0.0%	5	2	-60.0%	3	8	166.7%
Grevena	1	1	0.0%	0	1		0	0		1	0	
Kastoria	1	2	100.0%	0	0		0	0		1	2	
Kozani	1	5	400.0%	1	0		3	2		0	5	
Florina	2	1	-50.0%	0	0		2	0		1	1	
Ipeiros (Epirus)	8	10	25.0%	4	0	-100.0%	2	2	0.0%	9	9	0.0%
Arta	2	3	50.0%	1	0		0	2		5	2	
Thesprotia	1	3	200.0%	0	0		0	0		1	3	
Ioannina	4	2	-50.0%	3	0		1	0		1	2	
Preveza	1	2	100.0%	0	0		1	0		2	2	
Thessalia (Thessaly)	17	19	11.8%	2	2	0.0%	1	3	200.0%	18	20	11.1%
Karditsa	6	6	0.0%	1	0		0	0		7	9	
Larisa	9	9	0.0%	1	2		1	0		9	9	
Magnisia	2	1	-50.0%	0	0		0	0		2	1	
Trikala	0	3	-	0	0		0	3		0	1	
Ionioi Nisoi (Ionian Islands)	9	13	44.4%	1	3	200.0%	1	1	0.0%	9	10	11.1%
Zakynthos	0	2	-	0	1		0	0		0	2	
Kerkyra	5	6	20.0%	1	2		1	0		4	4	
Kefallinia	1	2	100.0%	0	0		0	0		1	2	
Lefkada	3	3	0.0%	0	0		0	1		4	2	

Table 1. Continued

Region and Department	Road Accidents			Killed			Seriously Injured			Slightly Injured		
	2014	2015	%	2014	2015	%	2014	2015	%	2014	2015	%
Dytiki Ellas (West Greece)	31	50	61.3%	5	6	20.0%	6	5	-16.7%	41	68	65.9%
Aitolia, Akarnania	11	14	27.3%	3	2		2	0		15	20	
Achaia	15	21	40.0%	2	2		2	3		22	31	
Ileia	5	15	200.0%	0	2		2	2		4	17	
Sterea Ellas	26	27	3.8%	4	4	0.0%	5	3	-40.0%	26	28	7.7%
Voiotia	5	4	-20.0%	1	1		1	1		4	6	
Evvoia	9	10	11.1%	3	1		1	0		8	10	
Evrytania	1	0	-100.0%	0	0		0	0		2	0	
Fthiotida	8	11	37.5%	0	2		3	2		8	10	
Fokida	3	2	-33.3%	0	0		0	0		4	2	
Attiki (Attica)	507	485	-4.3%	13	20	53.8%	22	24	9.1%	582	527	-9.5%
Peloponnisos (Peloponnese)	47	59	25.5%	9	8	-11.1%	7	5	-28.6%	45	58	28.9%
Argolida	14	11	-21.4%	1	1		2	2		13	10	
Arkadia	7	9	28.6%	4	1		1	2		6	8	
Korinthia	11	15	36.4%	2	1		2	0		11	17	
Lakonia	6	10	66.7%	1	1		1	0		6	10	
Messinia	9	14	55.6%	1	4		1	1		9	13	
Voreio Aigaio (North Aegean)	4	11	175.0%	1	4	300.0%	1	3	200.0%	3	6	100.0%
Lesvos	2	6	200.0%	0	2		0	1		3	3	
Samos	0	2	-	0	1		0	1		0	0	
Chios	2	3	50.0%	1	1		1	1		0	3	
Notio Aigaio (South Aegean)	11	28	154.5%	4	2	-50.0%	3	14	366.7%	8	21	162.5%
Dodekanisos	7	15	114.3%	2	2		3	7		4	11	
Kyklades	4	13	225.0%	2	0		0	7		4	10	
Kriti (Crete)	19	19	0.0%	4	7	75.0%	7	5	-28.6%	17	9	-47.1%
Irakleio	5	9	80.0%	3	3		2	2		2	4	
Lasithi	0	3	-	0	2		0	1		0	0	
Rethymni	5	0	-100.0%	0	0		0	0		7	0	
Chania	9	7	-22.2%	1	2		5	2		8	5	

Table 2. Road accidents and casualties, for the period January - April of the years 2013, 2014 and 2015

Period:	January - April			Percentage Change	
	2013	2014	2015	2014/2013	2015/2014
Road accidents	3,593	3,486	3,211	-3.0	-7.9
Killed	244	207	233	-15.2	12.6
Seriously injured	352	272	297	-22.7	9.2
Slightly injured	3,977	3,967	3,525	-0.3	-11.1
Casualties-Total	4,329	4,239	3,822	-2.1	-9.8

Diagram 1: Road accidents per 100,000 inhabitants

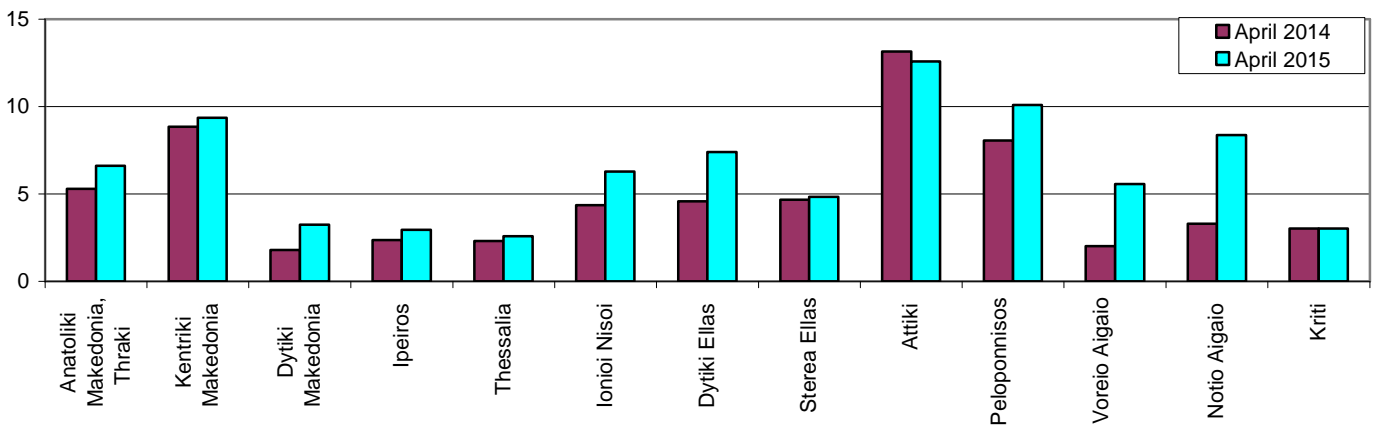


Diagram 2: Persons killed per 100,000 inhabitants

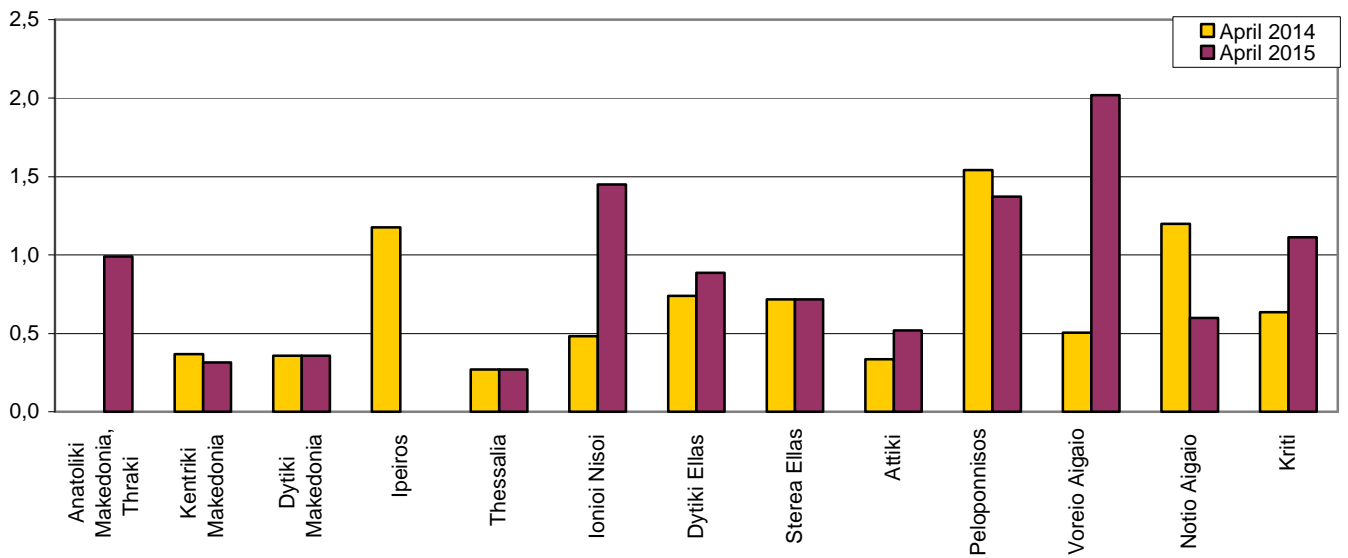


Diagram 3: Persons seriously injured per 100,000 inhabitants

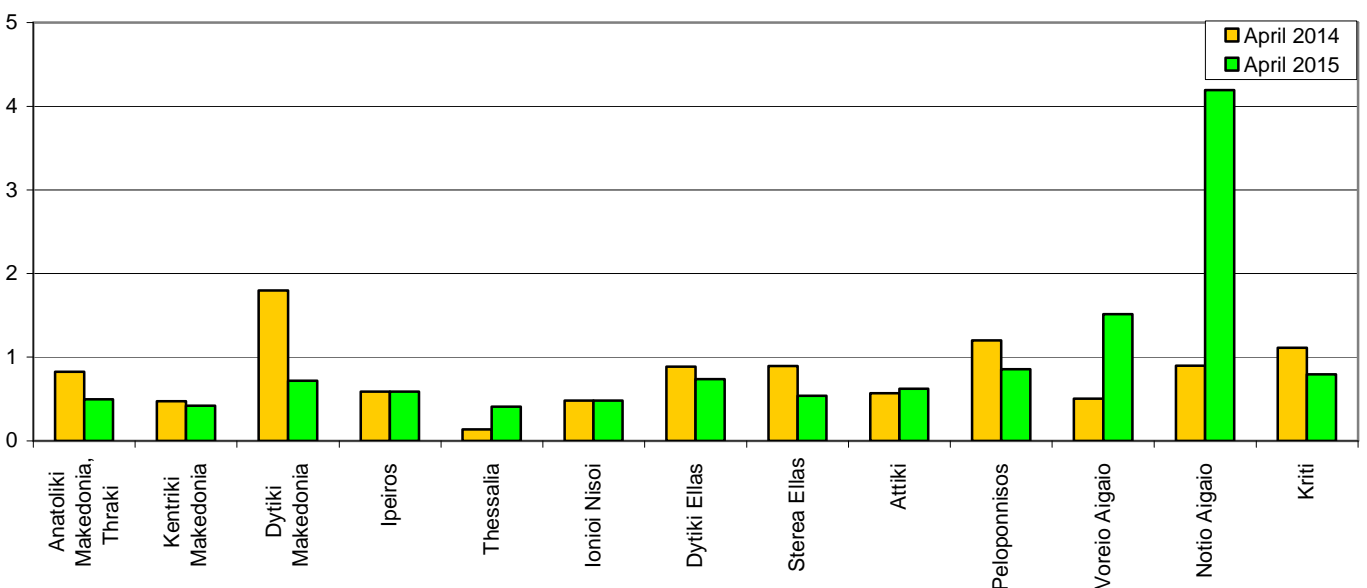
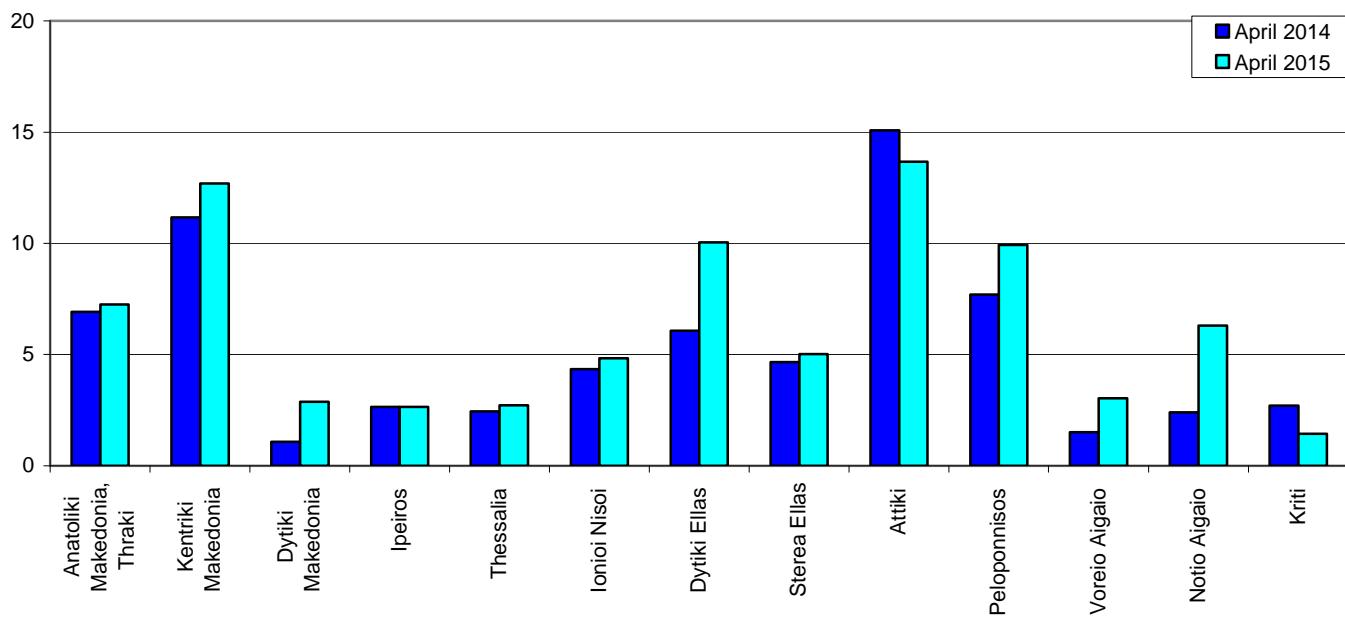


Diagram 4: Persons slightly injured per 100,000 inhabitants



EXPLANATORY NOTES

Survey on Road Accidents The survey on road accidents is conducted on a monthly basis and it records, for each Department of Greece and for each month separately, the number of accidents by fatal and/or non-fatal accident, as well as the number of persons injured by categories (drivers, passengers, pedestrians). On a yearly basis, road accidents are further analyzed.

The competent agencies for filling in/collecting the questionnaires on road accidents are the local Police Authorities and the local Port Authorities of Greece.

The lower level of analysis for the place where an injury road accident occurred is the settlement (oikismos), which is described by a 8-digit geographic code. Data are collected on a monthly basis.

The main variables are the following: place of accident, kind of road, casualties, conditions of road surface and type of road.

Legal basis The Survey on Road Traffic Accidents is governed by Council Decision 93/704/EC.

Reference Period 01.4.2015 to 30.4.2015

Availability of Results Provisional data: 2 months after the accident
Final data: 1 year after the reference year

National Definitions **Road accident** (injury accident): Any accident involving at least one road motor vehicle in motion on a public road or square to which the public has access (excluding yards, industrial sites or vehicle depot of public transport enterprises), resulting in at least one injured or killed person. Accidents with only material damages are not included.

Person killed: Any person killed immediately or dying within 30 days as a result of an injury accident (This national definition applies since 01.01.1996)

Person injured: Any person who sustained an injury as result of an injury accident, and who normally needs medical treatment.

Seriously injured: Any person who sustained an injury as result of an injury accident, such as brain damages, mutilation, multiple injuries, which may result in lack of awareness or which are life-threatening.

Slightly injured: Any person injured who sustained minor and not life-threatening injuries.

Vehicle: For the purposes of road accidents statistics, vehicles include motor vehicles, trolleybuses, motorcycles, bicycles, motorbikes, agricultural and road making machines, animal and hand-drawn vehicles. Railway vehicles are excluded, unless the road accident involves one of the aforementioned types of vehicles and therefore, railway vehicles are considered vehicles.

Methodology The questionnaires of the survey are filled in by the local Police Authorities and the local Port Authorities as well.

References More information about road accidents is available on ELSTAT's website and more specifically at the link: www.statistics.gr > Statistical Themes > Health – Social protection > Accidents > Road Traffic Accidents.

It should be noted that previous press releases and time series are available on ELSTAT's website: www.statistics.gr