



HELLENIC REPUBLIC



HELLENIC STATISTICAL AUTHORITY

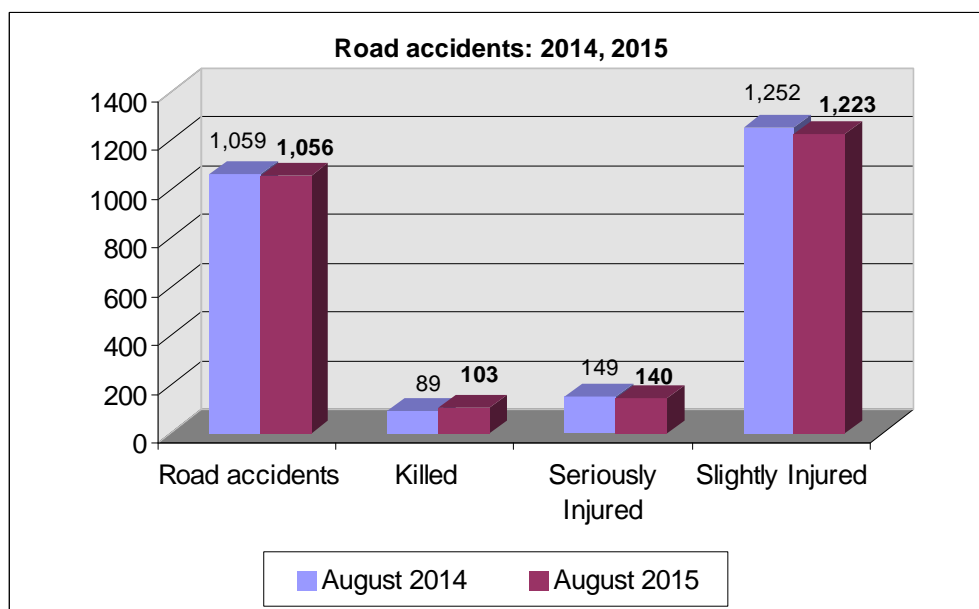
Piraeus, 30 October 2015

PRESS RELEASE

ROAD ACCIDENTS: August 2015

In August 2015 the road traffic accidents, which occurred in Greece resulting in injured or killed persons, decreased by 0.3% in comparison with the corresponding month of 2014 (1,056 road accidents in August 2015 against 1,059 road accidents in August 2014).

Among the casualties of the injury-causing accidents that occurred in August 2015, 103 persons were killed, 140 persons were seriously injured and 1,223 persons were slightly injured. In contrast, in August 2014 the corresponding figures were: 89 persons killed, 149 seriously injured and 1,252 slightly injured. Therefore, road accident casualties in August 2015 recorded an increase by 15.7% for persons killed, a decrease by 6% for persons seriously injured and a decrease by 2.3% for persons slightly injured.



Contact:
Social Statistics Division
Justice and Public Order Statistics Section

K. Theodoraki
Tel : +30 213 1352771
Fax : +30 213 1352764

Table 1. Road accidents and casualties, by region (NUTS 2) and department - August 2014 and 2015

Region and Department	Road Accidents			Killed			Seriously Injured			Slightly Injured		
	2014	2015	%	2014	2015	%	2014	2015	%	2014	2015	%
Greece total	1,059	1,056	-0.3%	89	103	15.7%	149	140	-6.0%	1,252	1,223	-2.3%
Anatoliki Makedonia, Thraki (East Macedonia and Thrace)	69	60	-13.0%	7	6	-14.3%	14	12	-14.3%	73	64	-12.3%
Drama	10	14	40.0%	1	1		0	2		10	13	
Evros	13	6	-53.8%	1	1		2	1		14	5	
Kavala	17	24	41.2%	1	2		4	8		20	24	
Xanthi	18	9	-50.0%	3	1		6	0		18	16	
Rodopi	11	7	-36.4%	1	1		2	1		11	6	
Kentriki Makedonia (Central Macedonia)	176	199	13.1%	11	21	90.9%	17	11	-35.3%	212	255	20.3%
Imathia	3	7	133.3%	1	3		1	1		1	5	
Thessaloniki	130	144	10.8%	5	10		7	2		166	192	
Kilkis	3	8	166.7%	0	1		0	1		4	13	
Pella	8	7	-12.5%	1	1		5	1		5	5	
Pieria	7	7	0.0%	0	2		2	2		6	10	
Serres	11	8	-27.3%	4	0		1	0		7	9	
Chalkidiki	14	18	28.6%	0	4		1	4		23	21	
Dytiki Makedonia (West Macedonia)	13	14	7.7%	2	3	50.0%	3	3	0.0%	31	19	-38.7%
Grevena	1	3	200.0%	0	0		0	0		12	3	
Kastoria	2	1	-50.0%	1	0		0	0		2	1	
Kozani	10	8	-20.0%	1	3		3	1		17	14	
Florina	0	2	-	0	0		0	2		0	1	
Ipeiros (Epirus)	20	13	-35.0%	3	3	0.0%	6	3	-50.0%	39	13	-66.7%
Arta	3	0	-100.0%	2	0		0	0		12	0	
Thesprotia	9	2	-77.8%	0	0		2	1		13	2	
Ioannina	2	3	50.0%	0	0		1	1		9	2	
Preveza	6	8	33.3%	1	3		3	1		5	9	
Thessalia (Thessaly)	31	30	-3.2%	7	6	-14.3%	6	3	-50.0%	32	25	-21.9%
Karditsa	9	5	-44.4%	2	1		0	1		14	3	
Larisa	15	15	0.0%	1	2		3	1		16	16	
Magnisia	4	7	75.0%	2	2		2	0		2	5	
Trikala	3	3	0.0%	2	1		1	1		0	1	
Ionioi Nisoi (Ionian Islands)	23	40	73.9%	2	2	0.0%	7	5	-28.6%	27	49	81.5%
Zakynthos	3	5	66.7%	1	2		1	1		2	8	
Kerkyra	11	22	100.0%	0	0		3	1		17	27	
Kefallinia	3	7	133.3%	1	0		1	2		2	8	
Lefkada	6	6	0.0%	0	0		2	1		6	6	

Table 1. Continued

Region and Department	Road Accidents			Killed			Seriously Injured			Slightly Injured		
	2014	2015	%	2014	2015	%	2014	2015	%	2014	2015	%
Dytiki Ellas (West Greece)	63	57	-9.5%	7	10	42.9%	10	11	10.0%	76	59	-22.4%
Aitolia, Akarnania	17	24	41.2%	4	6		2	7		14	23	
Achaia	37	25	-32.4%	3	2		8	2		48	28	
Ileia	9	8	-11.1%	0	2		0	2		14	8	
Sterea Ellas	57	51	-10.5%	3	7	133.3%	6	11	83.3%	76	61	-19.7%
Voiotia	7	9	28.6%	0	3		0	3		8	11	
Evvoia	26	15	-42.3%	2	3		4	0		40	19	
Evrytania	0	1	-	0	0		0	0		0	1	
Fthiotida	19	16	-15.8%	0	1		1	5		25	18	
Fokida	5	10	100.0%	1	0		1	3		3	12	
Attiki (Attica)	423	392	-7.3%	22	16	-27.3%	24	25	4.2%	507	474	-6.5%
Peloponnisos (Peloponnese)	81	81	0.0%	5	13	160.0%	13	13	0.0%	94	102	8.5%
Argolida	13	6	-53.8%	0	2		1	1		15	4	
Arkadia	12	13	8.3%	1	2		3	1		10	17	
Korinthia	32	34	6.3%	1	4		5	1		44	44	
Lakonia	10	10	0.0%	3	1		2	3		7	9	
Messinia	14	18	28.6%	0	4		2	7		18	28	
Voreio Aigaio (North Aegean)	18	11	-38.9%	0	2	-	4	5	25.0%	22	11	-50.0%
Lesvos	10	6	-40.0%	0	1		2	3		9	5	
Samos	2	1	-50.0%	0	0		1	0		2	3	
Chios	6	4	-33.3%	0	1		1	2		11	3	
Notio Aigaio (South Aegean)	63	78	23.8%	10	10	0.0%	32	30	-6.3%	49	68	38.8%
Dodekanisos	28	40	42.9%	6	8		8	16		30	35	
Kyklades	35	38	8.6%	4	2		24	14		19	33	
Kriti (Crete)	22	30	36.4%	10	4	-60.0%	7	8	14.3%	14	23	64.3%
Irakleio	7	11	57.1%	7	1		2	6		1	7	
Lasithi	4	4	0.0%	1	0		1	0		2	5	
Rethymni	4	2	-50.0%	0	0		1	0		6	3	
Chania	7	13	85.7%	2	3		3	2		5	8	

Table 2. Road accidents and casualties, for the period January - August of the years 2013, 2014 and 2015

Period:	January - August			Percentage Change	
	2013	2014	2015	2014/2013	2015/2014
Road accidents	7,921	7,943	7,517	0.3	-5.4
Killed	573	513	545	-10.5	6.2
Seriously injured	907	757	757	-16.5	0.0
Slightly injured	8,865	9,099	8,382	2.6	-7.9
Casualties-Total	9,772	9,856	9,139	0.9	-7.3

Diagram 1: Road accidents per 100,000 inhabitants

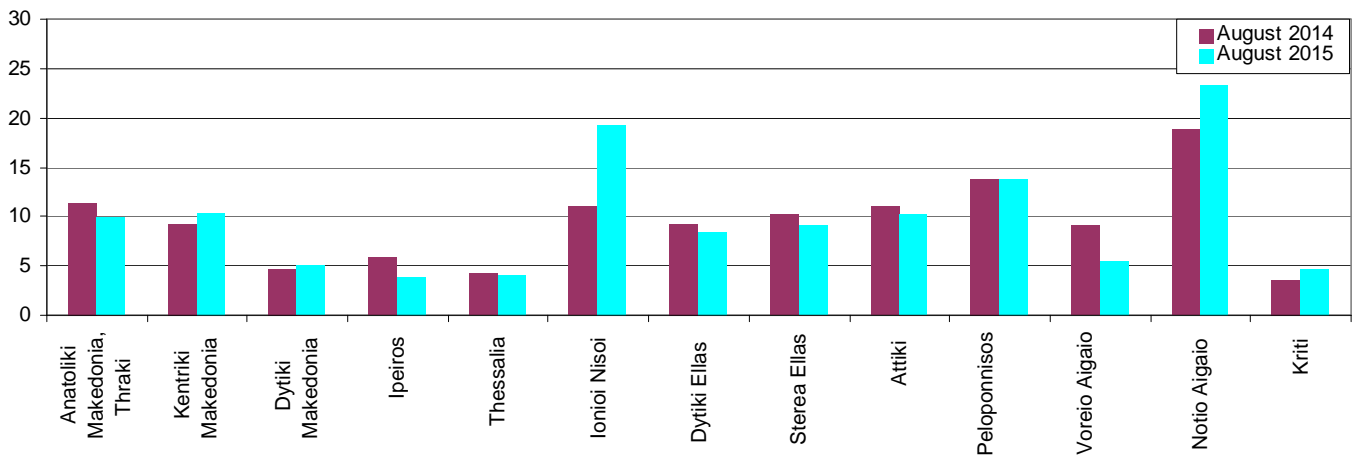


Diagram 2: Persons killed per 100,000 inhabitants

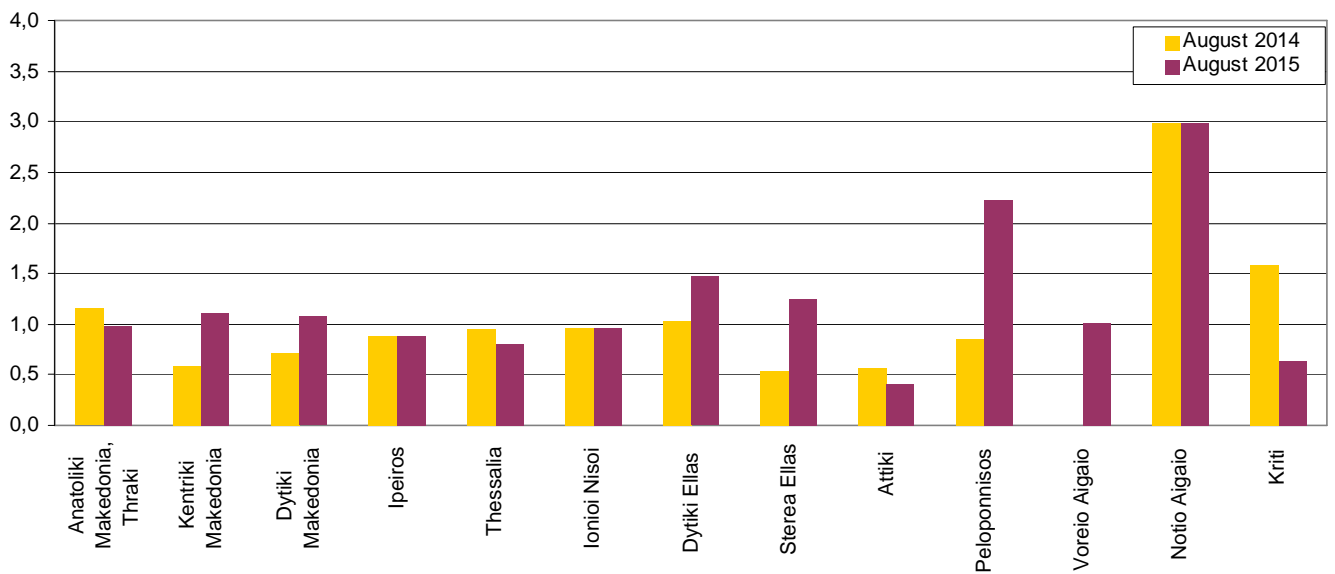


Diagram 3: Persons seriously injured per 100,000 inhabitants

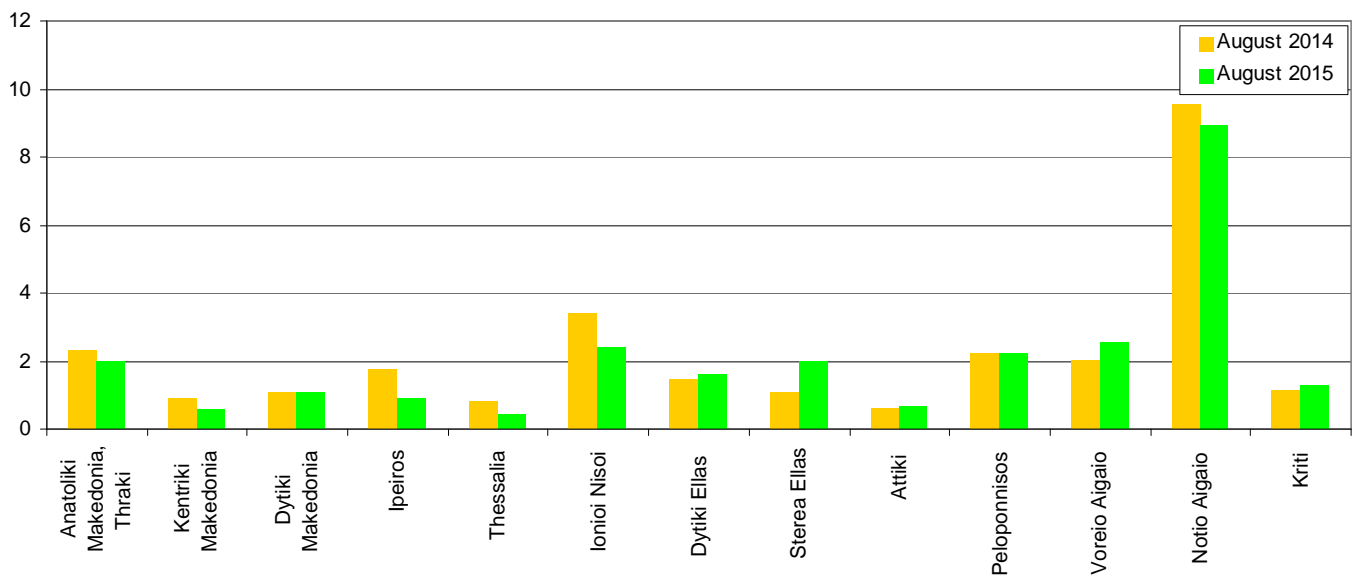
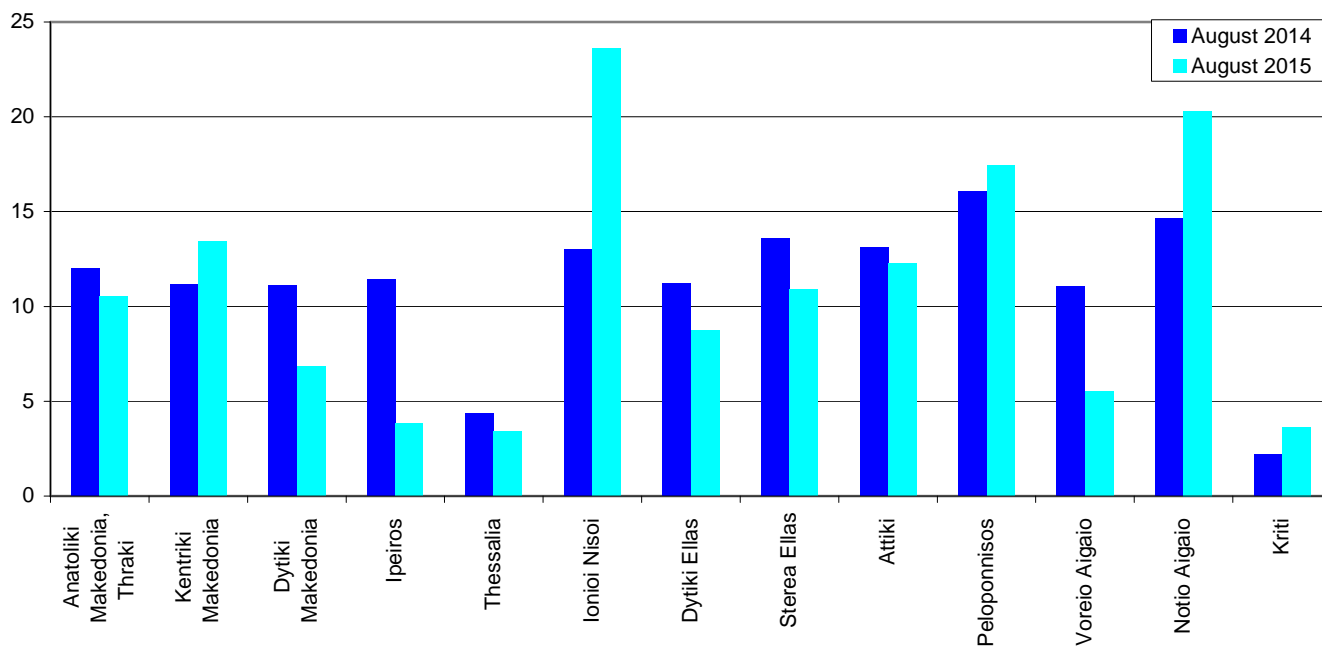


Diagram 4: Persons slightly injured per 100,000 inhabitants



EXPLANATORY NOTES

Survey on Road Accidents	<p>The survey on road accidents is conducted on a monthly basis and it records, for each Department of Greece and for each month separately, the number of accidents by fatal and/or non-fatal accident, as well as the number of persons injured by categories (drivers, passengers, pedestrians). On a yearly basis, road accidents are further analyzed.</p> <p>The competent agencies for filling in/collecting the questionnaires on road accidents are the local Police Authorities and the local Port Authorities of Greece.</p> <p>The lower level of analysis for the place where an injury road accident occurred is the settlement (oikismos), which is described by a 8-digit geographic code. Data are collected on a monthly basis.</p> <p>The main variables are the following: place of accident, kind of road, casualties, conditions of road surface and type of road.</p>
Legal basis	<p>The Survey on Road Traffic Accidents is governed by Council Decision 93/704/EC.</p>
Reference Period	<p>01.8.2015 to 31.8.2015</p>
Availability of Results	<p>Provisional data: 2 months after the accident Final data: 1 year after the reference year</p>
National Definitions	<p>Road accident (injury accident): Any accident involving at least one road motor vehicle in motion on a public road or square to which the public has access (excluding yards, industrial sites or vehicle depot of public transport enterprises), resulting in at least one injured or killed person. Accidents with only material damages are not included.</p> <p>Person killed: Any person killed immediately or dying within 30 days as a result of an injury accident (This national definition applies since 01.01.1996)</p> <p>Person injured: Any person who sustained an injury as result of an injury accident, and who normally needs medical treatment.</p> <p>Seriously injured: Any person who sustained an injury as result of an injury accident, such as brain damages, mutilation, multiple injuries, which may result in lack of awareness or which are life-threatening.</p> <p>Slightly injured: Any person injured who sustained minor and not life-threatening injuries.</p> <p>Vehicle: For the purposes of road accidents statistics, vehicles include motor vehicles, trolleybuses, motorcycles, bicycles, motorbikes, agricultural and road making machines, animal and hand-drawn vehicles. Railway vehicles are excluded, unless the road accident involves one of the aforementioned types of vehicles and therefore, railway vehicles are considered vehicles.</p>
Methodology	<p>The questionnaires of the survey are filled in by the local Police Authorities and the local Port Authorities as well.</p>
References	<p>More information about road accidents is available on ELSTAT's website and more specifically at the link: www.statistics.gr > Statistical Themes > Health – Social protection > Accidents > Road Traffic Accidents.</p> <p>It should be noted that previous press releases and time series are available on ELSTAT's website: www.statistics.gr</p>