



HELLENIC REPUBLIC



HELLENIC STATISTICAL AUTHORITY

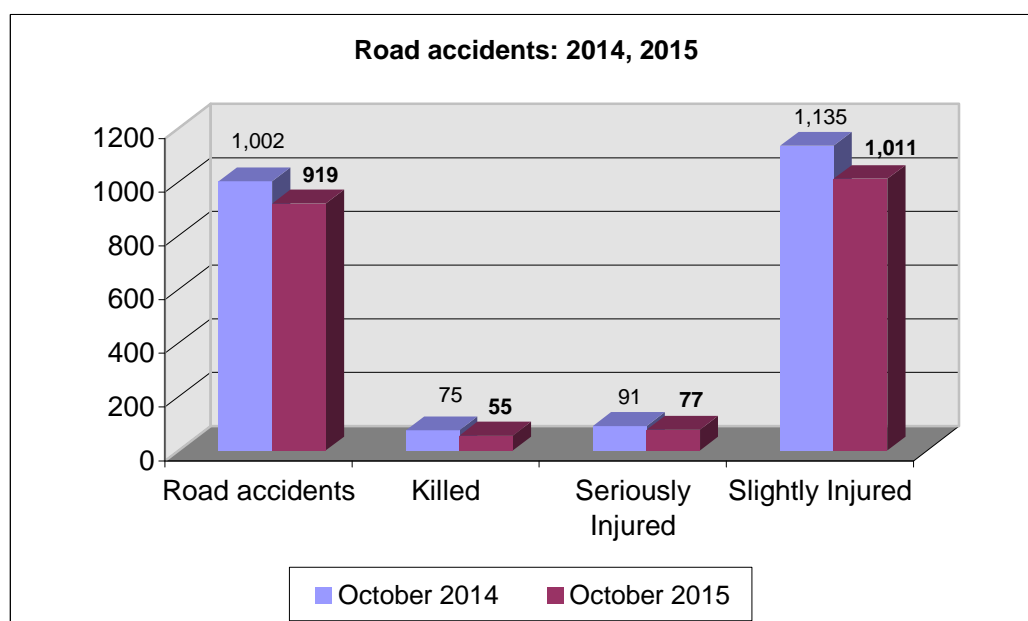
Piraeus, 30 December 2015

PRESS RELEASE

ROAD ACCIDENTS: October 2015

In October 2015 the road traffic accidents, which occurred in Greece resulting in injured or killed persons, decreased by 8.3% in comparison with the corresponding month of 2014 (919 road accidents in October 2015 against 1,002 road accidents in October 2014).

Among the casualties of the injury-causing accidents that occurred in October 2015, 55 persons were killed, 77 persons were seriously injured and 1,011 persons were slightly injured. In contrast, in October 2014 the corresponding figures were: 75 persons killed, 91 seriously injured and 1,135 slightly injured. Therefore, road accident casualties in October 2015 recorded a decrease by 26.7% for persons killed, by 15.4% for persons seriously injured and by 10.9% for persons slightly injured.



Contact:
Social Statistics Division
Justice and Public Order Statistics Section

D. Athanasopoulou
Tel : +30 213 1352767
Fax : +30 213 1352764

Table 1. Road accidents and casualties, by region (NUTS 2) and department - October 2014 and 2015

Region and Department	Road Accidents			Killed			Seriously Injured			Slightly Injured		
	2014	2015	%	2014	2015	%	2014	2015	%	2014	2015	%
Greece total	1,002	919	-8.3%	75	55	-26.7%	91	77	-15.4%	1,135	1,011	-10.9%
Anatoliki Makedonia, Thraki (East Macedonia and Thrace)	40	41	2.5%	3	3	0.0%	3	5	66.7%	48	43	-10.4%
Drama	7	6	-14.3%	0	1		0	1		8	8	
Evros	11	7	-36.4%	0	0		1	2		14	5	
Kavala	8	11	37.5%	2	1		1	1		13	11	
Xanthi	10	9	-10.0%	1	1		1	1		8	11	
Rodopi	4	8	100.0%	0	0		0	0		5	8	
Kentriki Makedonia (Central Macedonia)	186	176	-5.4%	9	6	-33.3%	13	7	-46.2%	248	210	-15.3%
Imathia	6	5	-16.7%	5	1		2	0		35	6	
Thessaloniki	160	147	-8.1%	1	1		6	3		183	178	
Kilkis	2	2	0.0%	1	0		0	1		2	1	
Pella	4	7	75.0%	1	1		1	2		4	8	
Pieria	2	4	100.0%	1	3		0	1		4	2	
Serres	6	8	33.3%	0	0		2	0		7	11	
Chalkidiki	6	3	-50.0%	0	0		2	0		13	4	
Dytiki Makedonia (West Macedonia)	4	8	100.0%	1	1	0.0%	3	0	-100.0%	3	9	200.0%
Grevena	1	2	100.0%	0	0		0	0		2	4	
Kastoria	1	2	100.0%	1	0		0	0		1	2	
Kozani	1	3	200.0%	0	0		2	0		0	3	
Florina	1	1	0.0%	0	1		1	0		0	0	
Ipeiros (Epirus)	12	8	-33.3%	1	0	-100.0%	3	1	-66.7%	15	16	6.7%
Arta	3	1	-66.7%	1	0		1	0		2	1	
Thesprotia	5	4	-20.0%	0	0		0	1		6	6	
Ioannina	3	3	0.0%	0	0		2	0		6	9	
Preveza	1	0	-100.0%	0	0		0	0		1	0	
Thessalia (Thessaly)	28	15	-46.4%	4	2	-50.0%	3	4	33.3%	30	13	-56.7%
Karditsa	7	3	-57.1%	1	0		0	0		7	4	
Larisa	11	5	-54.5%	0	0		3	0		15	6	
Magnisia	5	4	-20.0%	2	1		0	1		4	2	
Trikala	5	3	-40.0%	1	1		0	3		4	1	
Ionioi Nisoi (Ionian Islands)	10	11	10.0%	1	1	0.0%	0	0	0.0%	12	14	16.7%
Zakynthos	2	2	0.0%	0	0		0	0		2	3	
Kerkyra	6	6	0.0%	1	1		0	0		8	8	
Kefallinia	1	1	0.0%	0	0		0	0		1	1	
Lefkada	1	2	100.0%	0	0		0	0		1	2	

Table 1. Continued

Region and Department	Road Accidents			Killed			Seriously Injured			Slightly Injured		
	2014	2015	%	2014	2015	%	2014	2015	%	2014	2015	%
Dytiki Ellas (West Greece)	37	55	48.6%	8	4	-50.0%	8	5	-37.5%	29	63	117.2%
Aitolia, Akarnania	19	11	-42.1%	5	3		5	1		13	14	
Achaia	11	31	181.8%	2	1		3	3		9	35	
Ileia	7	13	85.7%	1	0		0	1		7	14	
Sterea Ellas	30	35	16.7%	4	2	-50.0%	6	5	-16.7%	26	37	42.3%
Voiotia	5	3	-40.0%	2	1		0	0		5	3	
Evvoia	7	11	57.1%	0	0		2	2		5	13	
Evrytania	1	2	100.0%	0	0		0	0		1	3	
Fthiotida	11	19	72.7%	0	1		3	3		9	18	
Fokida	6	0	-100.0%	2	0		1	0		6	0	
Attiki (Attica)	542	472	-12.9%	24	17	-29.2%	26	22	-15.4%	613	519	-15.3%
Peloponnisos (Peloponnese)	65	48	-26.2%	9	7	-22.2%	7	12	71.4%	72	43	-40.3%
Argolida	9	10	11.1%	1	1		2	1		10	12	
Arkadia	12	5	-58.3%	0	1		1	2		13	4	
Korinthia	20	16	-20.0%	1	1		0	5		22	16	
Lakonia	11	8	-27.3%	4	3		2	3		13	4	
Messinia	13	9	-30.8%	3	1		2	1		14	7	
Voreio Aigaio (North Aegean)	4	11	175.0%	2	1	-50.0%	0	5	-	5	12	140.0%
Lesvos	3	8	166.7%	1	1		0	3		4	4	
Samos	0	1	-	0	0		0	1		0	7	
Chios	1	2	100.0%	1	0		0	1		1	1	
Notio Aigaio (South Aegean)	27	19	-29.6%	3	3	0.0%	13	4	-69.2%	23	16	-30.4%
Dodekanisos	13	10	-23.1%	3	3		3	2		11	6	
Kyklades	14	9	-35.7%	0	0		10	2		12	10	
Kriti (Crete)	17	20	17.6%	6	8	33.3%	6	7	16.7%	11	16	45.5%
Irakleio	7	8	14.3%	4	4		3	4		5	7	
Lasithi	2	3	50.0%	0	1		0	1		2	3	
Rethymni	2	2	0.0%	1	1		0	1		1	0	
Chania	6	7	16.7%	1	2		3	1		3	6	

Table 2. Road accidents and casualties, for the period January - October of the years 2013, 2014 and 2015

Period:	January - October			Percentage Change	
	2013	2014	2015	2014/2013	2015/2014
Road accidents	10,170	9,945	9,426	-2.2	-5.2
Killed	739	661	672	-10.6	1.7
Seriously injured	1,134	935	932	-17.5	-0.3
Slightly injured	11,435	11,350	10,510	-0.7	-7.4
Casualties-Total	12,569	12,285	11,442	-2.3	-6.9

Diagram 1: Road accidents per 100,000 inhabitants

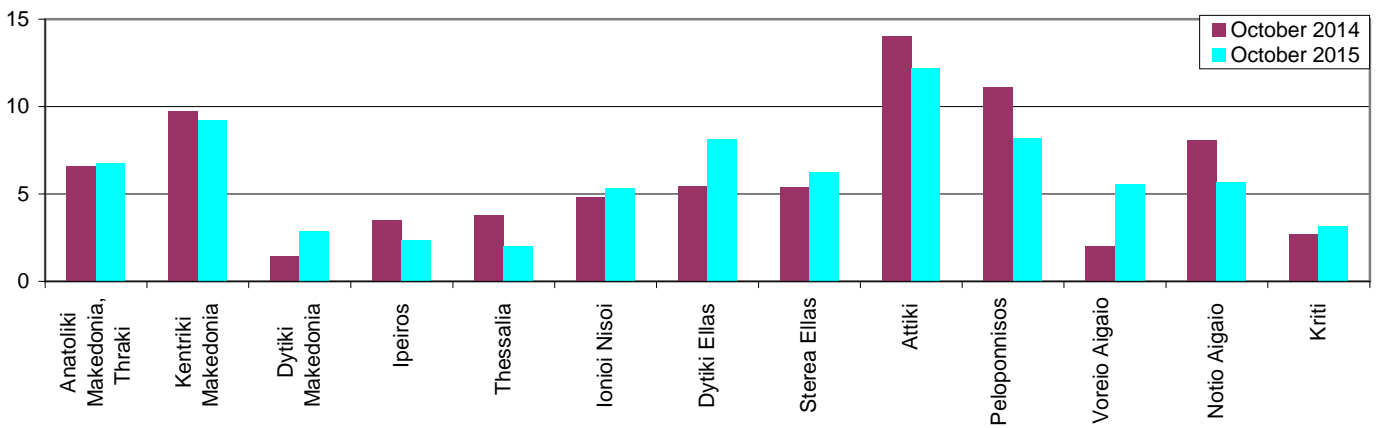


Diagram 2: Persons killed per 100,000 inhabitants

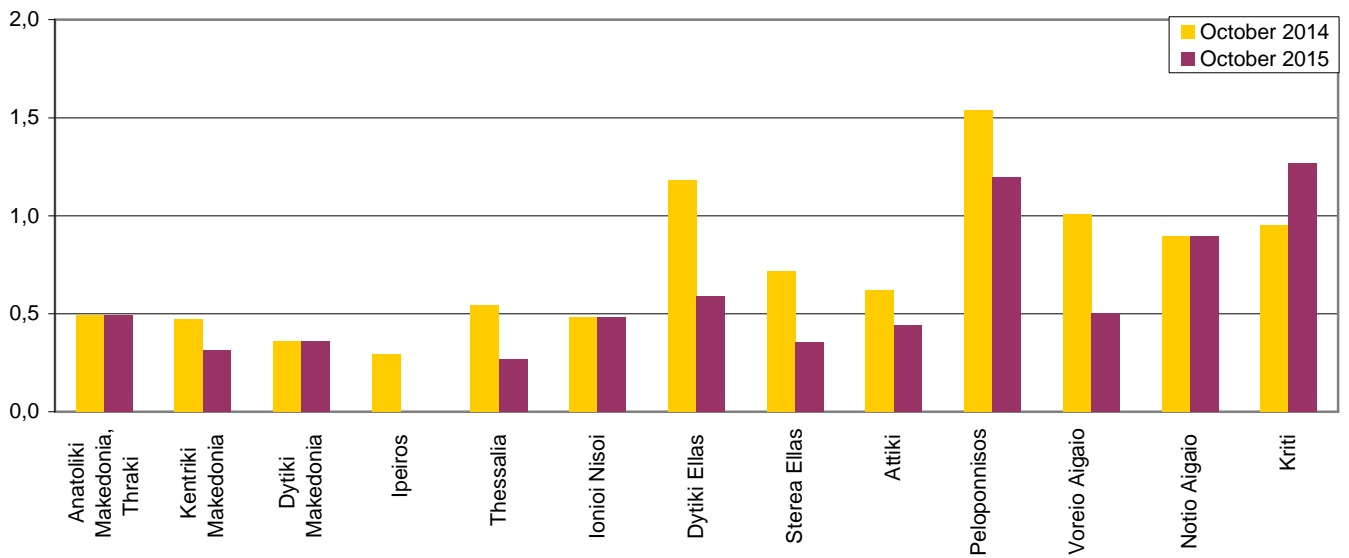


Diagram 3: Persons seriously injured per 100,000 inhabitants

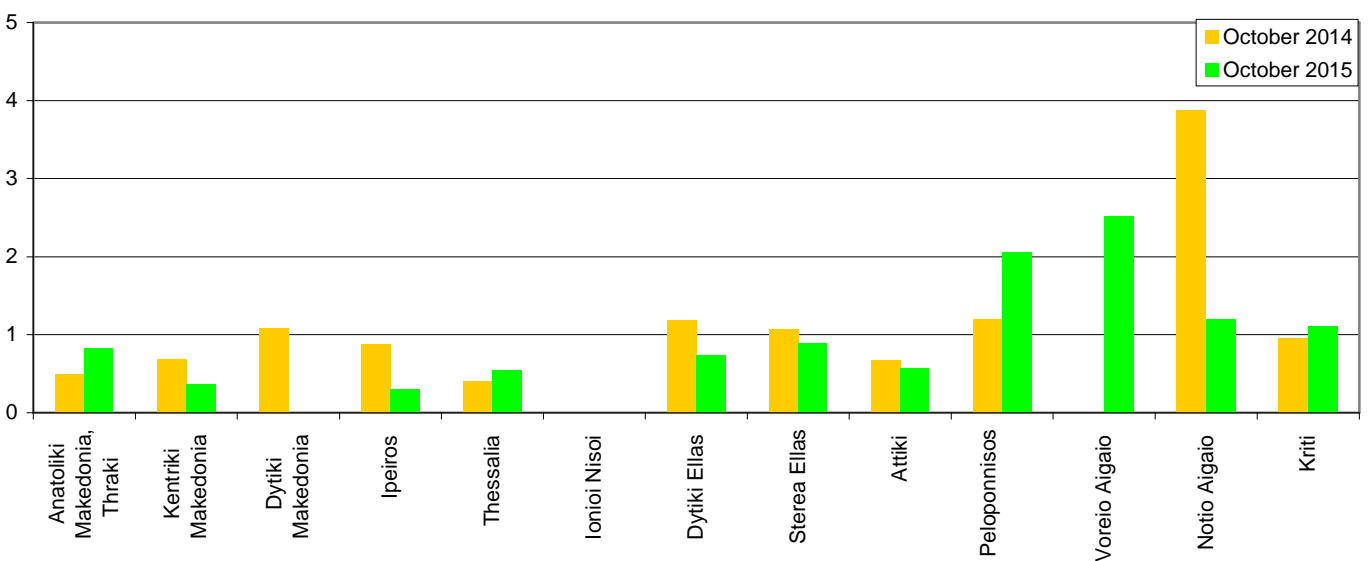
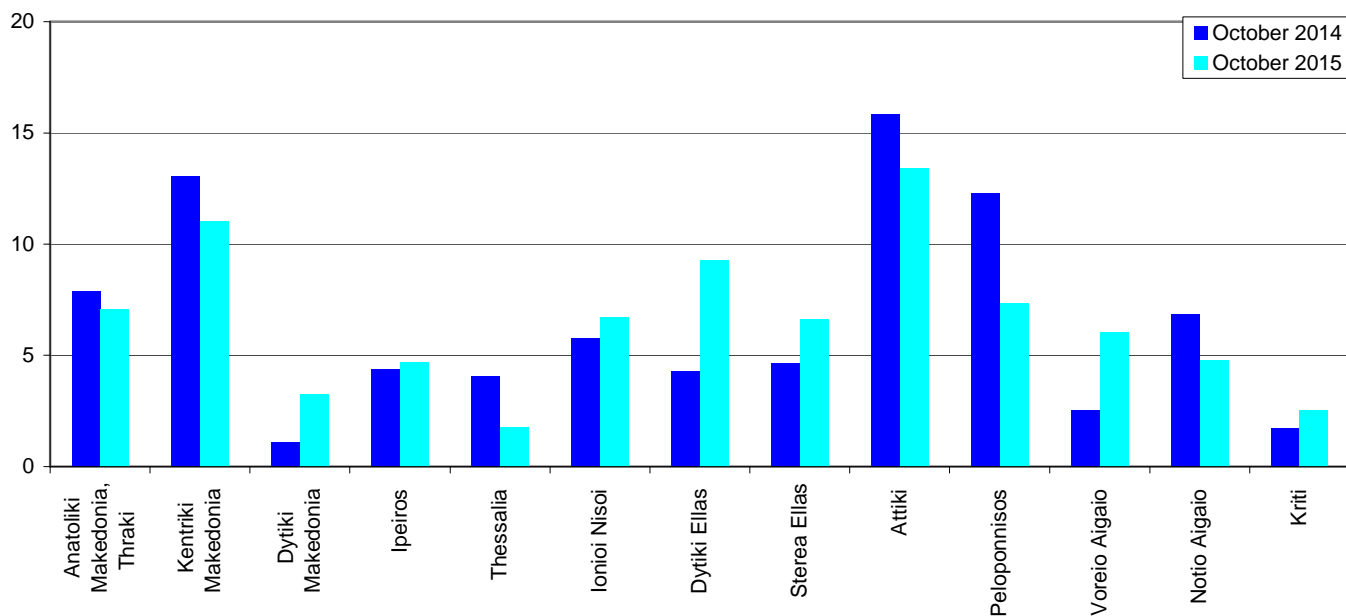


Diagram 4: Persons slightly injured per 100,000 inhabitants



EXPLANATORY NOTES

Survey on Road Accidents	<p>The survey on road accidents is conducted on a monthly basis and it records, for each Department of Greece and for each month separately, the number of accidents by fatal and/or non-fatal accident, as well as the number of persons injured by categories (drivers, passengers, pedestrians). On a yearly basis, road accidents are further analyzed.</p> <p>The competent agencies for filling in/collecting the questionnaires on road accidents are the local Police Authorities and the local Port Authorities of Greece.</p> <p>The lower level of analysis for the place where an injury road accident occurred is the settlement (oikismos), which is described by a 8-digit geographic code. Data are collected on a monthly basis.</p> <p>The main variables are the following: place of accident, kind of road, casualties, conditions of road surface and type of road.</p>
Legal basis	<p>The Survey on Road Traffic Accidents is governed by Council Decision 93/704/EC.</p>
Reference Period	<p>01.10.2015 to 31.10.2015</p>
Availability of Results	<p>Provisional data: 2 months after the accident Final data: 1 year after the reference year</p>
National Definitions	<p>Road accident (injury accident): Any accident involving at least one road motor vehicle in motion on a public road or square to which the public has access (excluding yards, industrial sites or vehicle depot of public transport enterprises), resulting in at least one injured or killed person. Accidents with only material damages are not included.</p> <p>Person killed: Any person killed immediately or dying within 30 days as a result of an injury accident (This national definition applies since 01.01.1996)</p> <p>Person injured: Any person who sustained an injury as result of an injury accident, and who normally needs medical treatment.</p> <p>Seriously injured: Any person who sustained an injury as result of an injury accident, such as brain damages, mutilation, multiple injuries, which may result in lack of awareness or which are life-threatening.</p> <p>Slightly injured: Any person injured who sustained minor and not life-threatening injuries.</p> <p>Vehicle: For the purposes of road accidents statistics, vehicles include motor vehicles, trolleybuses, motorcycles, bicycles, motorbikes, agricultural and road making machines, animal and hand-drawn vehicles. Railway vehicles are excluded, unless the road accident involves one of the aforementioned types of vehicles and therefore, railway vehicles are considered vehicles.</p>
Methodology	<p>The questionnaires of the survey are filled in by the local Police Authorities and the local Port Authorities as well.</p>
References	<p>More information about road accidents is available on ELSTAT's website and more specifically at the link: www.statistics.gr > Population & Social Conditions > Accidents > Road Traffic Accidents.</p> <p>It should be noted that previous press releases and time series are available on ELSTAT's website: www.statistics.gr</p>