



HELLENIC REPUBLIC



HELLENIC STATISTICAL AUTHORITY

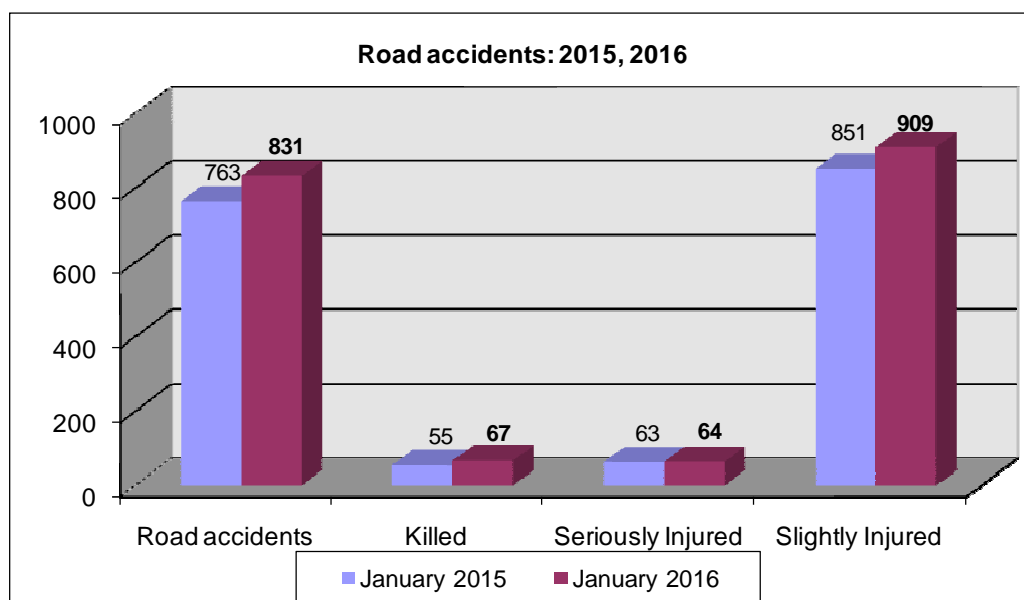
Piraeus, 31 March 2016

PRESS RELEASE

ROAD ACCIDENTS: January 2016

In January 2016 the road traffic accidents, which occurred in Greece resulting in injured or killed persons, increased by 8.9% in comparison with the corresponding month of 2015 (831 road accidents in January 2016 against 763 road accidents in January 2015).

Among the casualties of the injury-causing accidents that occurred in January 2016, 67 persons were killed, 64 persons were seriously injured and 909 persons were slightly injured. In contrast, in January 2015 the corresponding figures were: 55 persons killed, 63 seriously injured and 851 slightly injured. Therefore, road accident casualties in January 2016 recorded an increase by 21.8% for persons killed, by 1.6% for persons seriously injured and by 6.8% for persons slightly injured.



Contact:
Social Statistics Division
Justice and Public Order Statistics Section

D. Athanasopoulou
Tel : +30 213 1352767
Fax : +30 213 1352764

Table 1. Road accidents and casualties, by region (NUTS 2) and department - January 2015 and 2016

Region and Department	Road Accidents			Killed			Seriously Injured			Slightly Injured		
	2015	2016	%	2015	2016	%	2015	2016	%	2015	2016	%
Greece total	763	831	8.9%	55	67	21.8%	63	64	1.6%	851	909	6.8%
Anatoliki Makedonia, Thraki (East Macedonia and Thrace)	33	40	21.2%	3	6	100.0%	4	6	50.0%	42	45	7.1%
Drama	10	7	-30.0%	0	0		0	1		12	7	
Evros	5	5	0.0%	2	1		1	0		6	6	
Kavala	5	11	120.0%	0	0		1	3		4	16	
Xanthi	10	8	-20.0%	1	2		2	2		16	7	
Rodopi	3	9	200.0%	0	3		0	0		4	9	
Kentriki Makedonia (Central Macedonia)	186	149	-19.9%	8	10	25.0%	19	7	-63.2%	216	172	-20.4%
Imathia	4	3	-25.0%	0	2		2	0		4	1	
Thessaloniki	154	124	-19.5%	6	4		7	2		181	150	
Kilkis	7	6	-14.3%	0	0		1	0		9	9	
Pella	6	5	-16.7%	1	2		3	0		7	4	
Pieria	1	2	100.0%	0	1		1	1		2	0	
Serres	10	5	-50.0%	0	1		4	0		10	4	
Chalkidiki	4	4	0.0%	1	0		1	4		3	4	
Dytiki Makedonia (West Macedonia)	8	7	-12.5%	0	1	-	4	1	-75.0%	5	8	60.0%
Grevena	0	0	0.0%	0	0		0	0		0	0	
Kastoria	2	1	-50.0%	0	0		1	0		1	1	
Kozani	6	4	-33.3%	0	0		3	1		4	5	
Florina	0	2	-	0	1		0	0		0	2	
Ipeiros (Epirus)	10	11	10.0%	3	3	0.0%	2	1	-50.0%	10	17	70.0%
Arta	0	2	-	0	1		0	0		0	6	
Thesprotia	2	2	0.0%	0	0		1	0		1	3	
Ioannina	5	5	0.0%	1	1		1	1		8	3	
Preveza	3	2	-33.3%	2	1		0	0		1	5	
Thessalia (Thessaly)	9	12	33.3%	2	3	50.0%	1	1	0.0%	9	12	33.3%
Karditsa	2	2	0.0%	0	0		0	1		2	2	
Larisa	1	5	400.0%	0	2		0	0		1	4	
Magnisia	2	4	100.0%	0	1		0	0		3	4	
Trikala	4	1	-75.0%	2	0		1	0		3	2	
Ionioi Nisoi (Ionian Islands)	6	6	0.0%	2	0	-100.0%	1	0	-100.0%	4	8	100.0%
Zakynthos	1	0	-100.0%	1	0		0	0		0	0	
Kerkyra	2	3	50.0%	1	0		0	0		1	4	
Kefallinia	2	1	-50.0%	0	0		0	0		3	1	
Lefkada	1	2	100.0%	0	0		1	0		0	3	

Table 1. Continued

Region and Department	Road Accidents			Killed			Seriously Injured			Slightly Injured		
	2015	2016	%	2015	2016	%	2015	2016	%	2015	2016	%
Dytiki Ellas (West Greece)	32	39	21.9%	6	4	-33.3%	4	10	150.0%	37	43	16.2%
Aitolia, Akarnania	10	11	10.0%	1	3		1	2		11	9	
Achaia	16	20	25.0%	5	1		1	5		19	26	
Ileia	6	8	33.3%	0	0		2	3		7	8	
Sterea Ellas	28	23	-17.9%	3	3	0.0%	5	3	-40.0%	30	25	-16.7%
Voiotia	2	4	100.0%	0	0		1	0		1	5	
Evvoia	11	8	-27.3%	2	2		2	3		9	3	
Evrytania	1	1	0.0%	0	0		0	0		1	1	
Fthiotida	14	6	-57.1%	1	1		2	0		19	6	
Fokida	0	4	-	0	0		0	0		0	10	
Attiki (Attica)	400	482	20.5%	20	22	10.0%	15	20	33.3%	442	520	17.6%
Peloponnisos (Peloponnese)	32	31	-3.1%	5	5	0.0%	3	4	33.3%	40	39	-2.5%
Argolida	3	4	33.3%	0	1		0	2		3	3	
Arkadia	5	6	20.0%	0	0		1	0		7	9	
Korinthia	11	12	9.1%	1	1		0	2		15	16	
Lakonia	7	3	-57.1%	2	0		0	0		11	5	
Messinia	6	6	0.0%	2	3		2	0		4	6	
Voreio Aigaio (North Aegean)	1	8	700.0%	0	1	-	0	2	-	1	6	500.0%
Lesvos	0	2	-	0	0		0	1		0	1	
Samos	0	0	0.0%	0	0		0	0		0	0	
Chios	1	6	500.0%	0	1		0	1		1	5	
Notio Aigaio (South Aegean)	7	9	28.6%	2	2	0.0%	2	5	150.0%	4	4	0.0%
Dodekanisos	3	6	100.0%	1	2		0	4		3	2	
Kyklades	4	3	-25.0%	1	0		2	1		1	2	
Kriti (Crete)	11	14	27.3%	1	7	600.0%	3	4	33.3%	11	10	-9.1%
Irakleio	5	7	40.0%	1	4		1	2		4	3	
Lasithi	1	0	-100.0%	0	0		0	0		1	0	
Rethymni	0	2	-	0	1		0	0		0	1	
Chania	5	5	0.0%	0	2		2	2		6	6	

Table 2. Road accidents and casualties, for January of the years 2014, 2015 and 2016

Period:	January			Percentage Change	
	2014	2015	2016	2015/2014	2016/2015
Road accidents	853	763	831	-10.6	8.9
Killed	58	55	67	-5.2	21.8
Seriously injured	63	63	64	0.0	1.6
Slightly injured	979	851	909	-13.1	6.8
Casualties-Total	1,042	914	973	-12.3	6.5

Diagram 1: Road accidents per 100,000 inhabitants

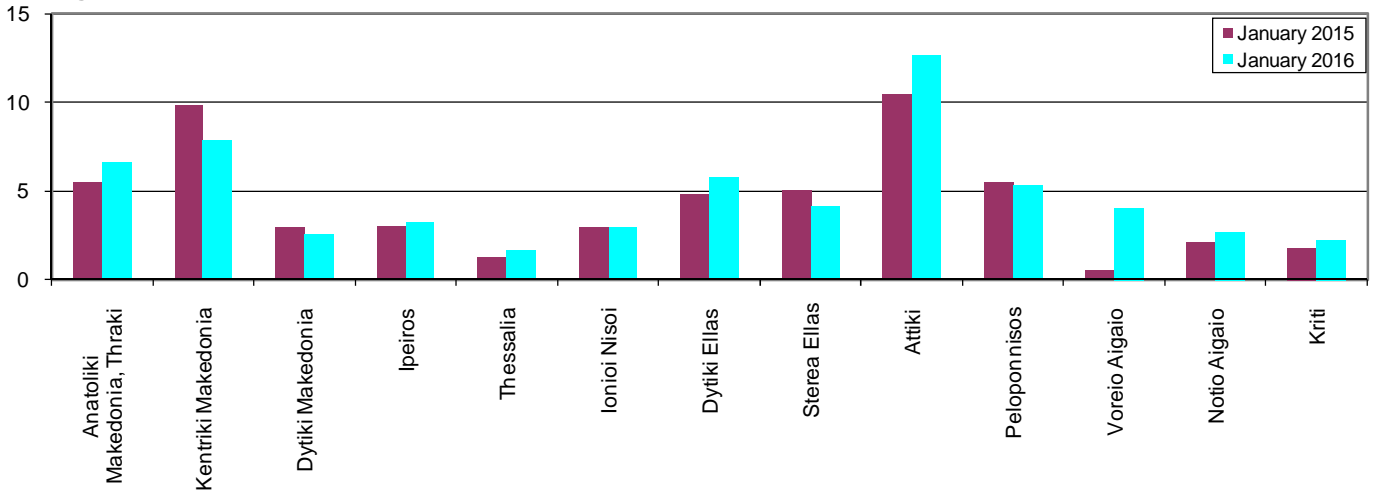


Diagram 2: Persons killed per 100,000 inhabitants

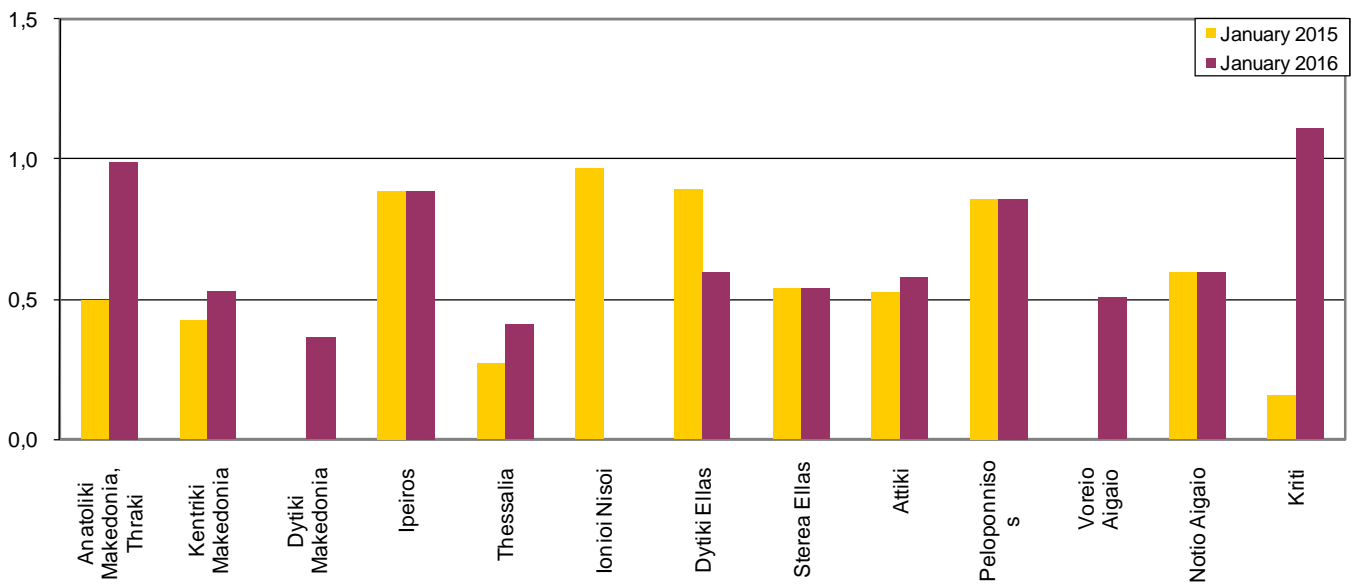


Diagram 3: Persons seriously injured per 100,000 inhabitants

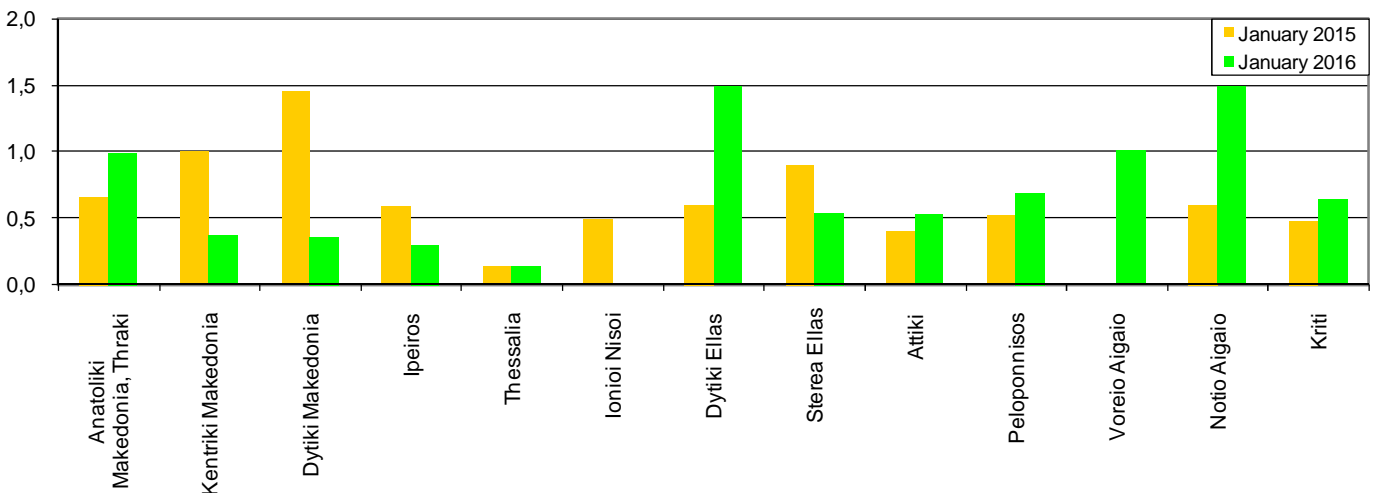
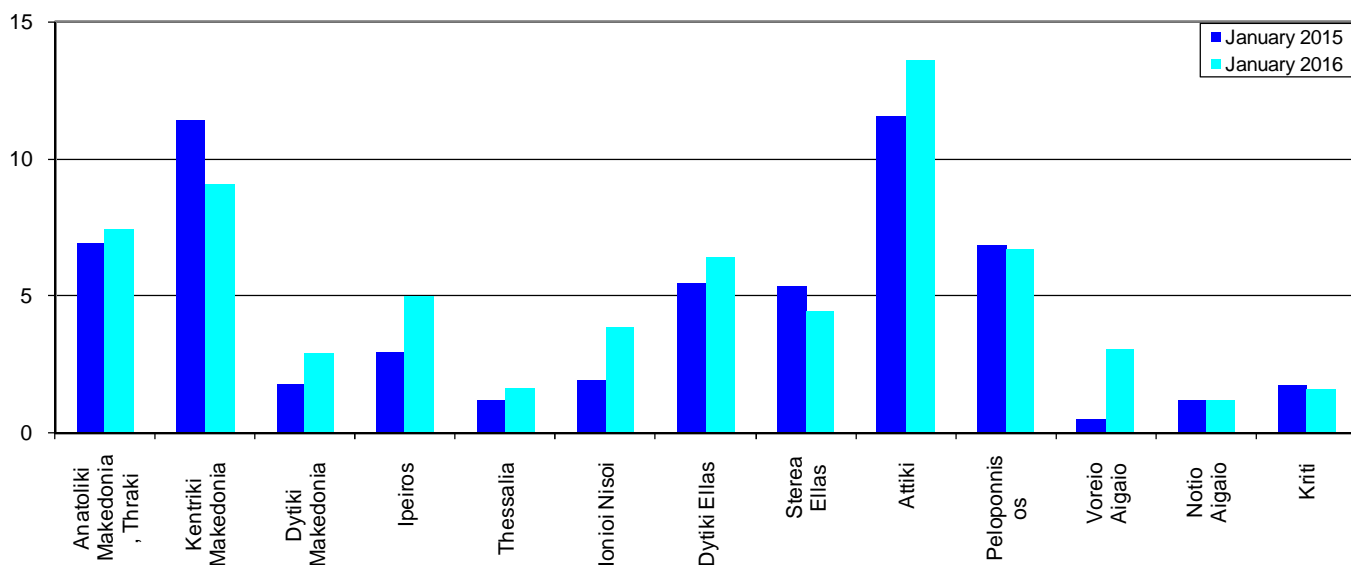


Diagram 4: Persons slightly injured per 100,000 inhabitants



EXPLANATORY NOTES

Survey on Road Accidents	<p>The survey on road accidents is conducted on a monthly basis and it records, for each Department of Greece and for each month separately, the number of accidents by fatal and/or non-fatal accident, as well as the number of persons injured by categories (drivers, passengers, pedestrians). On a yearly basis, road accidents are further analyzed.</p> <p>The competent agencies for filling in/collecting the questionnaires on road accidents are the local Police Authorities and the local Port Authorities of Greece.</p> <p>The lower level of analysis for the place where an injury road accident occurred is the settlement (oikismos), which is described by a 8-digit geographic code. Data are collected on a monthly basis.</p> <p>The main variables are the following: place of accident, kind of road, casualties, conditions of road surface and type of road.</p>
Legal basis	<p>The Survey on Road Traffic Accidents is governed by Council Decision 93/704/EC.</p>
Reference Period	<p>01.01.2016 to 31.01.2016</p>
Availability of Results	<p>Provisional data: 2 months after the accident Final data: 1 year after the reference year</p>
National Definitions	<p>Road accident (injury accident): Any accident involving at least one road motor vehicle in motion on a public road or square to which the public has access (excluding yards, industrial sites or vehicle depot of public transport enterprises), resulting in at least one injured or killed person. Accidents with only material damages are not included.</p> <p>Person killed: Any person killed immediately or dying within 30 days as a result of an injury accident (This national definition applies since 01.01.1996)</p> <p>Person injured: Any person who sustained an injury as result of an injury accident, and who normally needs medical treatment.</p> <p>Seriously injured: Any person who sustained an injury as result of an injury accident, such as brain damages, mutilation, multiple injuries, which may result in lack of awareness or which are life-threatening.</p> <p>Slightly injured: Any person injured who sustained minor and not life-threatening injuries.</p> <p>Vehicle: For the purposes of road accidents statistics, vehicles include motor vehicles, trolleybuses, motorcycles, bicycles, motorbikes, agricultural and road making machines, animal and hand-drawn vehicles. Railway vehicles are excluded, unless the road accident involves one of the aforementioned types of vehicles and therefore, railway vehicles are considered vehicles.</p>
Methodology	<p>The questionnaires of the survey are filled in by the local Police Authorities and the local Port Authorities as well.</p>
References	<p>More information about road accidents is available on ELSTAT's website and more specifically at the link: www.statistics.gr > Population & Social Conditions > Accidents > Road Traffic Accidents.</p> <p>It should be noted that previous press releases and time series are available on ELSTAT's website: www.statistics.gr</p>