

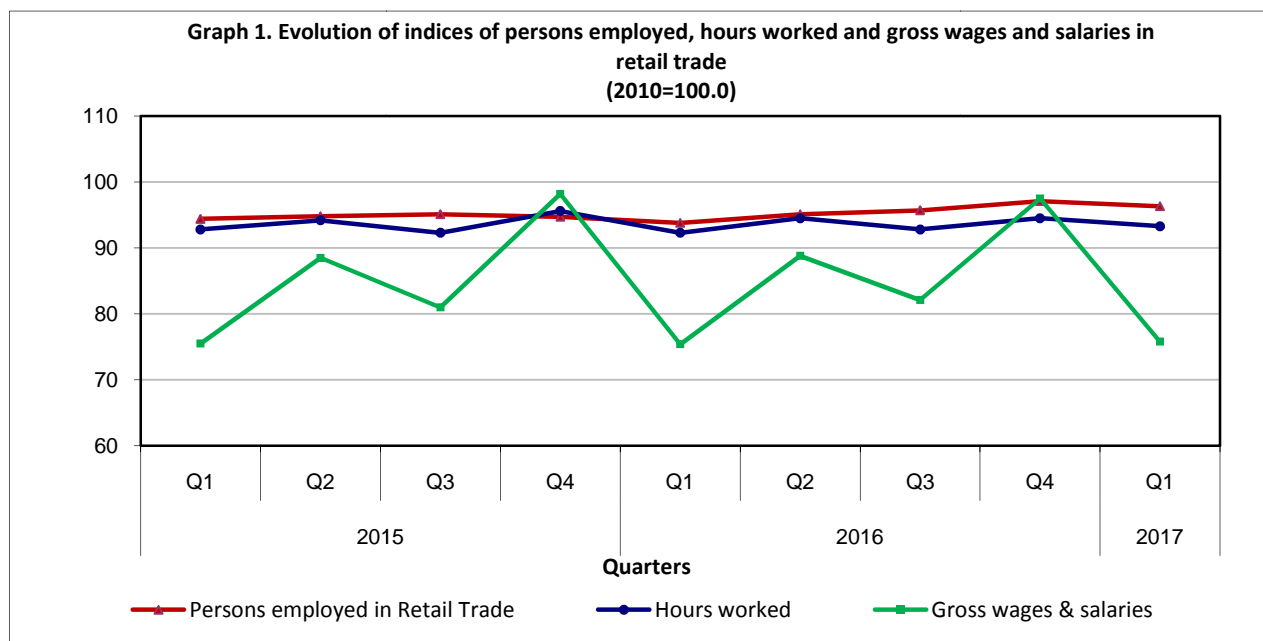


PRESS RELEASE

INDEX OF PERSONS EMPLOYED IN RETAIL TRADE: 1st quarter 2017, y-o-y increase 2.7%

The Hellenic Statistical Authority announces the indices of persons employed, as well as the indices of hours worked and gross wages and salaries in retail trade, with base year 2010=100.0, for the 1st quarter 2017 as follows:

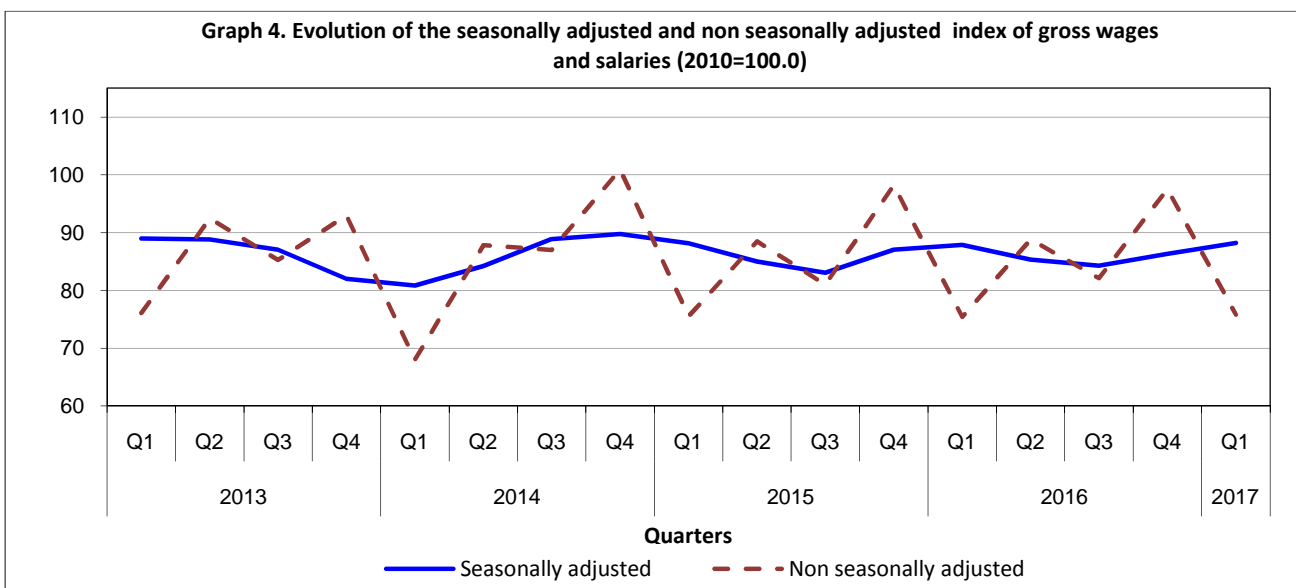
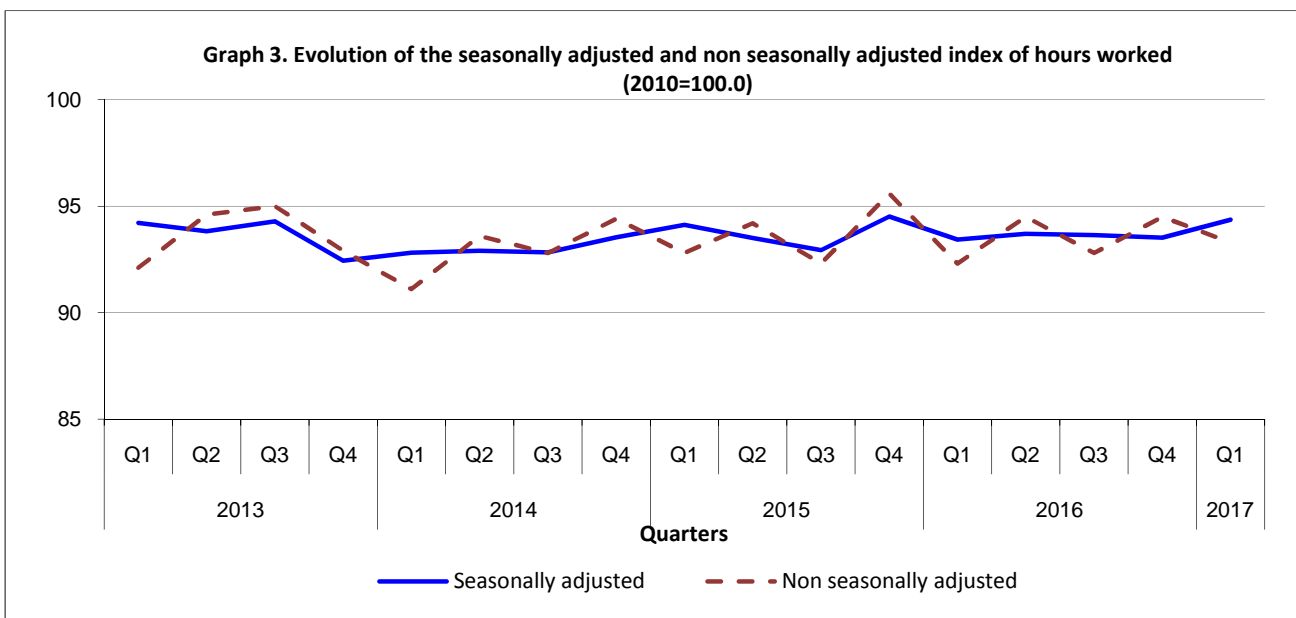
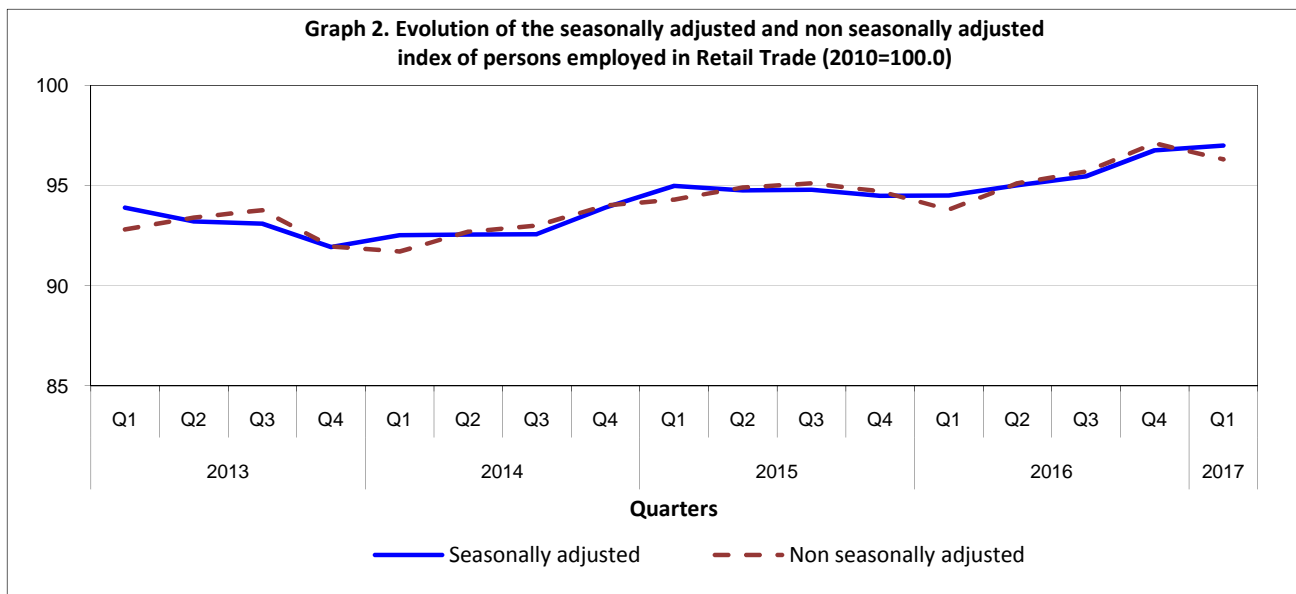
- The overall index of persons employed in retail trade in the 1st quarter 2017, compared with the corresponding index of the 1st quarter 2016 increased by 2.7%, while compared with the corresponding index of the 4th quarter 2016 decreased by 0.8% (Tables 1, 2).
- The index of hours worked in retail trade in the 1st quarter 2017, compared with the corresponding index of the 1st quarter 2016 increased by 1.1%, while compared with the corresponding index of the 4th quarter 2016 decreased by 1.3% (Table 4).
- The index of gross wages and salaries in retail trade in the 1st quarter 2017, compared with the corresponding index of the 1st quarter 2016 increased by 0.5%, while compared with the corresponding index of the 4th quarter 2016 decreased by 22.3% (Table 5).
- The seasonally adjusted overall index of persons employed in the 1st quarter 2017 compared with the 4th quarter 2016 increased by 0.3%, while the corresponding index of hours worked increased by 0.9 and the corresponding index of gross wages and salaries increased by 2.2% (Tables 3, 4, 5).



Information

Economic and Short-Term Indicators Division
Retail Sales Value Index
Ioannis Nikolaidis – Aikaterini Mertika
Tel: +30 213 135 2729 – 2717
Fax: +30 213 135 2729
e-mail: ret.sal@statistics.gr

Graphs 2, 3 and 4 depict the evolution of seasonally and non seasonally adjusted indices of the general index of persons employed, hours worked and gross wages and salaries in retail trade.



It should be noted that the whole series with seasonally adjusted indices are recalculated every time a new observation is added in time series. Therefore, the seasonally adjusted data differ from the published data of the previous Press Release.

Table 1. Annual rates of change of the Index of Persons Employed in Retail Trade

Base year: 2010=100.0

Year/Quarter		Overall Index		Overall Index excluding the automotive fuel sector		Index in the food sector		General Index except from the food and automotive fuel sector	
		Index	Annual rate of change (%)	Index	Annual rate of change (%)	Index	Annual rate of change (%)	Index	Annual rate of change (%)
2013	Q1	92.8	2.8	93.7	2.4	101.1	5.2	86.1	-0.8
	Q2	93.4	0.2	94.0	-0.4	102.8	2.2	85.0	-3.6
	Q3	93.8	-1.1	94.6	-1.3	103.7	0.6	85.2	-3.8
	Q4	92.0	-3.5	92.8	-3.6	99.8	-2.6	85.7	-4.8
<i>Average</i>		<i>93.0</i>	<i>-0.4</i>	<i>93.8</i>	<i>-0.8</i>	<i>101.8</i>	<i>1.3</i>	<i>85.5</i>	<i>-3.3</i>
2014	Q1	91.7	-1.2	92.6	-1.2	99.9	-1.2	85.1	-1.1
	Q2	92.7	-0.8	93.6	-0.4	101.3	-1.4	85.9	1.1
	Q3	93.0	-0.9	94.0	-0.6	102.5	-1.2	85.7	0.6
	Q4	94.0	2.2	95.0	2.4	102.5	2.7	87.4	2.0
<i>Average</i>		<i>92.8</i>	<i>-0.2</i>	<i>93.8</i>	<i>0.0</i>	<i>101.6</i>	<i>-0.2</i>	<i>86.0</i>	<i>0.6</i>
2015	Q1	94.3	2.8	94.9	2.5	103.5	3.6	86.5	1.6
	Q2	94.9	2.4	95.6	2.1	104.9	3.6	86.6	0.8
	Q3	95.1	2.3	95.8	1.9	105.3	2.7	86.6	1.1
	Q4	94.7	0.7	95.6	0.6	104.4	1.9	87.1	-0.3
<i>Average</i>		<i>94.7</i>	<i>2.0</i>	<i>95.5</i>	<i>1.8</i>	<i>104.5</i>	<i>2.9</i>	<i>86.7</i>	<i>0.8</i>
2016	Q1	93.8	-0.5	94.4	-0.5	104.3	0.8	85.1	-1.6
	Q2	95.1	0.2	96.0	0.4	106.7	1.7	85.9	-0.8
	Q3	95.7	0.6	96.7	0.9	108.8	3.3	85.6	-1.2
	Q4	97.1	2.5	98.0	2.5	110.6	5.9	86.6	-0.6
<i>Average</i>		<i>95.4</i>	<i>0.7</i>	<i>96.3</i>	<i>0.8</i>	<i>107.6</i>	<i>3.0</i>	<i>85.8</i>	<i>-1.0</i>
2017	Q1*	96.3	2.7	97.3	3.1	109.7	5.2	85.9	0.9

* Provisional data

Table 2. Quarterly rates of change of the Index of Persons Employed in Retail Trade

Base year: 2010=100.0

Year/Quarter		Overall Index		Overall Index excluding the automotive fuel sector		Index in the food sector		General Index except from the food and automotive fuel sector	
		Index	Quarterly rate of change (%)	Index	Quarterly rate of change (%)	Index	Quarterly rate of change (%)	Index	Quarterly rate of change (%)
2013	Q1	92.8	-2.6	93.7	-2.7	101.1	-1.4	86.1	-4.4
	Q2	93.4	0.6	94.0	0.3	102.8	1.6	85.0	-1.3
	Q3	93.8	0.4	94.6	0.6	103.7	0.9	85.2	0.3
	Q4	92.0	-1.9	92.8	-1.9	99.8	-3.7	85.7	0.6
	<i>Average</i>	<i>93.0</i>		<i>93.8</i>		<i>101.8</i>		<i>85.5</i>	
2014	Q1	91.7	-0.3	92.6	-0.3	99.9	0.1	85.1	-0.7
	Q2	92.7	1.1	93.6	1.1	101.3	1.4	85.9	0.9
	Q3	93.0	0.3	94.0	0.4	102.5	1.2	85.7	-0.2
	Q4	94.0	1.1	95.0	1.1	102.5	0.0	87.4	2.0
	<i>Average</i>	<i>92.8</i>		<i>93.8</i>		<i>101.6</i>		<i>86.0</i>	
2015	Q1	94.3	0.3	94.9	-0.1	103.5	1.0	86.5	-1.0
	Q2	94.9	0.6	95.6	0.7	104.9	1.4	86.6	0.1
	Q3	95.1	0.2	95.8	0.2	105.3	0.4	86.6	0.0
	Q4	94.7	-0.4	95.6	-0.2	104.4	-0.9	87.1	0.6
	<i>Average</i>	<i>94.7</i>		<i>95.5</i>		<i>104.5</i>		<i>86.7</i>	
2016	Q1	93.8	-1.0	94.4	-1.3	104.3	-0.1	85.1	-2.3
	Q2	95.1	1.4	96.0	1.7	106.7	2.3	85.9	0.9
	Q3	95.7	0.6	96.7	0.7	108.8	2.0	85.6	-0.3
	Q4	97.1	1.5	98.0	1.3	110.6	1.7	86.6	1.2
	<i>Average</i>	<i>95.4</i>		<i>96.3</i>		<i>107.6</i>		<i>85.8</i>	
2017	Q1*	96.3	-0.8	97.3	-0.7	109.7	-0.8	85.9	-0.8

* Provisional data

Table 3. Quarterly seasonally adjusted rates of change of the Index of Persons Employed in Retail Trade

Base year: 2010=100.0

Year/Quarter		Overall Index Seasonally Adjusted		Overall Index excluding the automotive fuel sector Seasonally adjusted		Index in the food sector Seasonally adjusted		General Index except from the food and automotive fuel sector Seasonally adjusted	
		Index	Quarterly rate of change (%)	Index	Quarterly rate of change (%)	Index	Quarterly rate of change (%)	Index	Quarterly rate of change (%)
2013	Q1	93.9	-1.5	94.8	-1.1	102.2	-0.5	86.7	-3.0
	Q2	93.2	-0.7	94.1	-0.7	102.5	0.3	85.3	-1.5
	Q3	93.1	-0.1	94.1	-0.1	102.7	0.2	85.2	-0.1
	Q4	91.9	-1.2	92.8	-1.4	100.0	-2.6	85.1	-0.1
	<i>Average</i>	<i>93.0</i>		<i>93.9</i>		<i>101.8</i>		<i>85.6</i>	
2014	Q1	92.5	0.6	93.2	0.5	100.9	0.9	85.3	0.2
	Q2	92.5	0.0	93.6	0.4	101.1	0.1	86.0	0.8
	Q3	92.6	0.0	93.7	0.2	101.6	0.5	86.0	-0.1
	Q4	93.9	1.4	94.9	1.2	102.7	1.1	86.7	0.8
	<i>Average</i>	<i>92.9</i>		<i>93.9</i>		<i>101.6</i>		<i>86.0</i>	
2015	Q1	95.0	1.2	95.3	0.4	104.5	1.8	86.9	0.3
	Q2	94.8	-0.2	95.4	0.1	104.6	0.1	86.6	-0.3
	Q3	94.8	0.0	95.6	0.2	104.4	-0.3	86.7	0.1
	Q4	94.5	-0.3	95.4	-0.2	104.6	0.2	86.4	-0.4
	<i>Average</i>	<i>94.8</i>		<i>95.4</i>		<i>104.5</i>		<i>86.7</i>	
2016	Q1	94.5	0.0	95.2	-0.2	105.3	0.7	85.7	-0.8
	Q2	95.0	0.5	96.0	0.9	106.5	1.1	85.9	0.3
	Q3	95.5	0.5	96.5	0.5	107.9	1.3	85.8	-0.2
	Q4	96.7	1.3	97.5	1.0	110.7	2.7	86.0	0.3
	<i>Average</i>	<i>95.4</i>		<i>96.3</i>		<i>107.6</i>		<i>85.9</i>	
2017	Q1	97.0	0.3	97.8	0.3	110.8	0.0	86.3	0.3

Table 4. Index of Hours Worked in retail trade

Base year: 2010=100.0

Year / Quarter		Index	Annual rate of change (%)	Quarterly rate of change (%)	Index reduced to typical quarter of equal duration	Annual rate of change (%)	Quarterly rate of change (%)	Seasonally adjusted index	Quarterly rate of change (%)
2013	Q1	92.1	1.9	-4.1	95.1	2.9	0.8	94.2	-1.7
	Q2	94.6	0.4	2.7	95.1	1.4	0.0	93.8	-0.4
	Q3	95.0	-0.4	0.4	93.1	-1.9	-2.1	94.3	0.5
	Q4	92.9	-3.2	-2.2	91.0	-3.5	-2.3	92.4	-2.0
	<i>Average</i>	93.7	-0.3		93.6	-0.3		93.7	
2014	Q1	91.1	-1.1	-1.9	95.0	-0.1	4.4	92.8	0.4
	Q2	93.6	-1.1	2.7	93.8	-1.4	-1.3	92.9	0.1
	Q3	92.8	-2.3	-0.9	90.7	-2.6	-3.3	92.8	-0.1
	Q4	94.4	1.6	1.7	92.2	1.3	1.7	93.5	0.8
	<i>Average</i>	93.0	-0.7		92.9	-0.7		93.0	
2015	Q1	92.8	1.9	-1.7	97.0	2.1	5.2	94.1	0.6
	Q2	94.2	0.6	1.5	93.4	-0.4	-3.7	93.5	-0.7
	Q3	92.3	-0.5	-2.0	90.4	-0.3	-3.2	92.9	-0.6
	Q4	95.6	1.3	3.6	93.7	1.6	3.7	94.5	1.7
	<i>Average</i>	93.7	0.8		93.6	0.8		93.8	
2016	Q1	92.3	-0.5	-3.5	97.1	0.1	3.6	93.4	-1.1
	Q2	94.5	0.3	2.4	93.2	-0.2	-4.0	93.7	0.3
	Q3	92.8	0.5	-1.8	91.4	1.1	-1.9	93.6	-0.1
	Q4	94.5	-1.2	1.8	92.0	-1.8	0.7	93.5	-0.1
	<i>Average</i>	93.5	-0.2		93.4	-0.2		93.6	
2017	Q1*	93.3	1.1	-1.3	97.6	0.5	6.1	94.4	0.9

*Provisional data

Table 5. Index of Gross Wages and Salaries in retail trade

Base year: 2010=100.0

Year/Quarter		Index	Annual rate of change (%)	Quarterly rate of change (%)	Seasonally Adjusted Index	Quarterly rate of change (%)
2013	Q1	76.1	0.0	-30.5	89.0	-9.7
	Q2	92.5	-2.1	21.6	88.8	-0.2
	Q3	85.3	1.4	-7.8	87.1	-2.0
	Q4	93.0	-15.1	9.0	82.0	-5.8
<i>Average</i>		86.7	-4.8		86.7	
2014	Q1	68.0	-10.6	-26.9	80.8	-1.4
	Q2	87.8	-5.1	29.1	84.2	4.2
	Q3	87.0	2.0	-0.9	88.9	5.5
	Q4	100.9	8.5	16.0	89.8	1.0
<i>Average</i>		85.9	-0.9		85.9	
2015	Q1	75.5	11.0	-25.2	88.1	-1.8
	Q2	88.5	0.8	17.2	85.0	-3.6
	Q3	81.0	-6.9	-8.5	83.1	-2.3
	Q4	98.2	-2.7	21.2	87.0	4.8
<i>Average</i>		85.8	-0.1		85.8	
2016	Q1	75.4	-0.1	-23.2	87.9	1.0
	Q2	88.8	0.3	17.8	85.3	-2.9
	Q3	82.1	1.4	-7.5	84.3	-1.2
	Q4	97.5	-0.7	18.8	86.3	2.5
<i>Average</i>		86.0	0.2		86.0	
2017	Q1*	75.8	0.5	-22.3	88.2	2.2

*Provisional data

METHODOLOGICAL NOTES

Generally	<p>The index of persons employed in retail trade is a quarterly index that was first compiled in 2004 with 2000=100.0 as the base year and backdated data from the 1st quarter of 2000.</p> <p>The indices of hours worked, as well as gross wages and salaries with base year 2010=100.0 are quarterly indices that were first compiled in 2016 and backdated data from the 1st quarter of 2010.</p>
Purpose of the index – definitions	<p>The purpose of the persons employed index is to show the development of employment in retail trade. The compilation of the index includes the number of persons employed in the enterprise irrespectively of their status (owners, partners and their family members) and the nature of their work (managers, sales persons and auxiliary staff) and irrespectively of whether they work on a provisional or seasonal basis, full time or part time, with or without remuneration.</p> <p>The purpose of the hours worked index is to show the development in the volume of work done in retail trade from the total of persons employed (employers, own-account workers, salaried employees, unpaid family workers). The total number of hours worked represents the aggregate number of hours actually worked for the output of the enterprise during the reference period (quarter). Included are hours actually worked during normal working hours, hours worked in addition to those, time which is spent at the place of work on tasks such as preparing the site and time corresponding to short periods of rest at the work place. This variable excludes hours paid but not actually worked such as for annual leave, holidays and sickness leave. It also excludes meal breaks and commuting between home and work.</p> <p>The purpose of the wages and salaries index is to approximate the development of the gross wages and salaries bill. Wages and salaries are defined as the total remuneration, in cash or in kind, payable to all persons counted on the payroll (including home workers), in return for work done during the accounting period, regardless of whether it is paid on the basis of working time, output or piecework and whether it is paid regularly.</p>
Legal basis	<p>The compilation of the index of persons employed in retail trade is governed by Council Regulation (EEC) No.1165/98 concerning short-term statistics, while the indices of hours worked, and gross wages and salaries are governed by the Commission Regulation (EC) No 329/2009 amending Council Regulation (EC) No 1165/98 concerning short-term statistics as regards the updating of the list of variables. In addition, all the above indices are governed by the Regulation No.1893/2006 of the European Parliament and of the Council establishing the statistical classification of economic activities NACE Rev.2.</p>
Reference period	<p>Quarter.</p>
Base year	<p>2010=100.0.</p>
Revision	<p>Pursuant to the provisions of Council Regulation No 1165/98 concerning short-term statistics, the indices in question are revised every five (5) years in years ending in 0 or 5.</p>
Statistical classification	<p>The NACE Rev.2 statistical classification of economic activities is used, in conformity with Regulation (EC) 1893/2006 of the European Parliament and the Council.</p>
Geographical coverage	<p>The indices cover the whole country, with data coming from 58 Regional Units</p>
Coverage of economic activities	<p>The indices cover the division 47 of NACE Rev.2 statistical classification of economic activities of the European Parliament and the Council.</p>
Statistical survey	<p>For the compilation of indices of persons employed, hours worked, and wages and salaries in retail trade (2010=100.0), a sub-sample of enterprises is used, which was obtained from the existing sample of observation units from the turnover index in retail trade survey. More specifically, out of the 1,607 enterprises included in the sample of the survey for the turnover index in retail trade (2010=100.0), 754 enterprises were selected covering all the design strata of the above survey, which resulted by crossing of 11 categories of aggregated economic classes and size classes of enterprises.</p>
Calculating the indices	<p>The indices of persons employed, hours worked and wages and salaries in retail trade are calculated as a chain index. First, the moving based index is calculated by comparing the estimated value (number of persons employed, hours worked, wages and salaries) for the current quarter with the corresponding value of the previous quarter. Afterwards the fixed base index for the current quarter is calculated by multiplying the moving-based index by the fixed base index of the previous quarter.</p> <p>The hours worked index is reduced to a typical quarter of equal duration. To this end the hours worked estimates are multiplied by a suitable correction factor that is calculated by dividing the mean quarterly number of working days in the given year by the number of the regular working days in the quarter under consideration.</p>

- Seasonal adjustment** Seasonal adjustment is the procedure followed to remove the impact of seasonality on the time series in order to improve the comparability over time. The method used is the TRAMO-SEATS method with the use of JDemetra+ 2.0.0. The whole series with seasonally adjusted indices is *recalculated* every time a *new* observation is added in time series.
- Compiled index series** The time series of this index are compiled from 1st quarter 2000 as follows: 1) Overall Index, 2) Overall Index (excluding the persons employed in the automotive fuel sector), 3) Index of persons employed in the food sector and 4) Index of persons employed in the non-food sector except automotive fuel.
- Publication of data** The time series of the Index of Persons Employed in Retail Trade (2010=100.0) have being published since 2000. The time series of the hours worked, and wages and salaries indices have being published since 2010.
- References** More information on the methodology concerning the compilation and calculation of the index and for the time series is available on the ELSTAT website:
<http://www.statistics.gr/en/statistics/-/publication/DKT12/>