



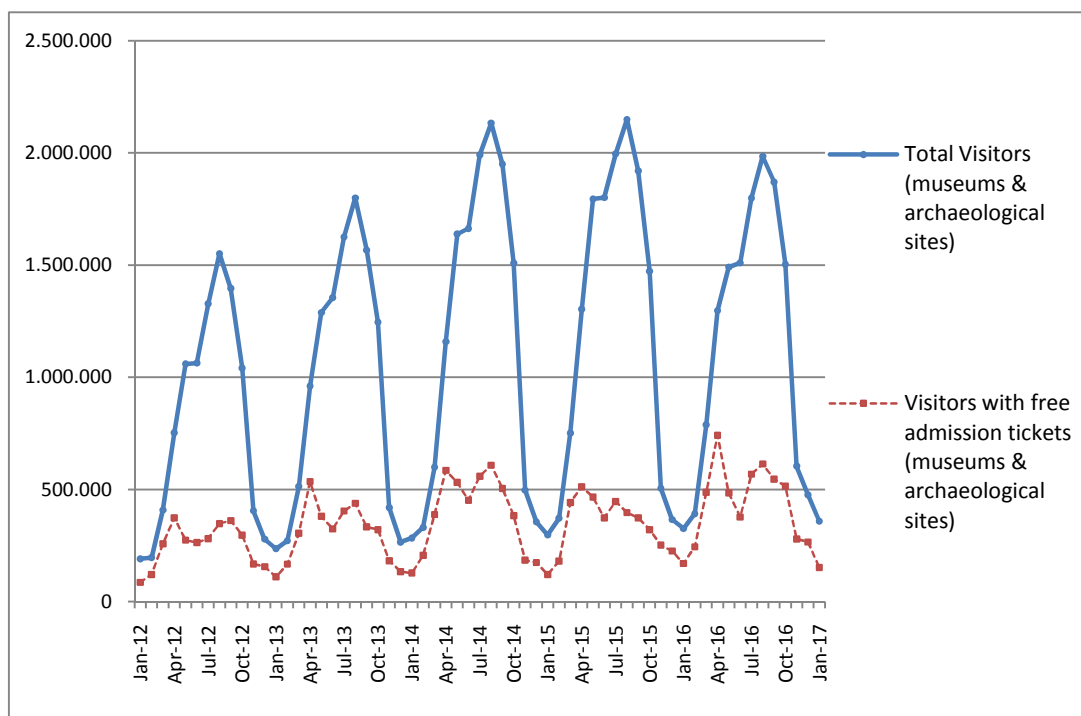
PRESS RELEASE

SURVEY ON MUSEUMS AND ARCHAEOLOGICAL SITES ATTENDANCE JANUARY 2017

The Hellenic Statistical Authority (ELSTAT) announces the results of the *Survey on Museums and Archaeological Sites Attendance* for January 2017. More specifically:

- In January 2017 compared with the corresponding month of 2016, Museums experienced a 5.3% increase in the number of visitors and a 11.2% decrease in the number of free admission visitors as well as a 17.5% increase in their receipts (Table 1).
- In January 2017 compared with the corresponding month of 2016, the number of visitors at Archaeological sites recorded an increase of 14.5%, while a decrease of 10.2% was observed in the number of free admission visitors and a 50.2% increase in the corresponding receipts (Table 1).

Graph 1: Visitors of Museums and Archaeological sites (Jan 2012 – Jan 2017)



Information:

Social Statistics Division

Section of Culture and Sports statistics,

Argyro Pateraki (Tel: +30 213 1352129, e-mail: ar.pateraki@statistics.gr)

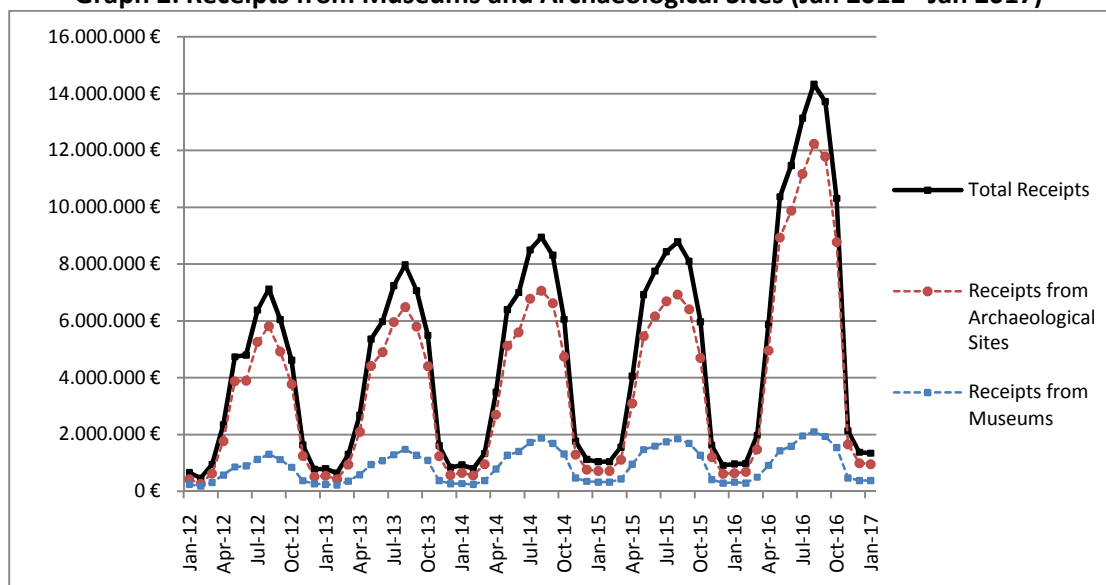
**TABLE 1: VISITORS OF MUSEUMS AND ARCHAEOLOGICAL SITES - TOTAL RECEIPTS
(JANUARY 2016 & JANUARY 2017)**

I. VISITORS			
Museums and Archaeological sites	2016	2017	Change 2017/2016
Total number of visitors (A+B)	325,318	358,089	10.1%
A. Museums (C+E)	157,919	166,367	5.3%
Acropolis Museum	60,829	59,178	-2.7%
National Archaeological	19,029	22,121	16.2%
Ancient Olympia	1,743	1,407	-19.3%
Palace of the Grand Master (Rhodes)	1,315	1,493	13.5%
Herakleion Archaeological (Crete)	2,672	1,859	-30.4%
Rhodes	416	434	4.3%
Delphi	5,947	6,166	3.7%
Other museums	65,968	73,709	11.7%
B. Archaeological Sites (D+F)	167,399	191,722	14.5%
Epidavros ⁽¹⁾	6,571	6,839	4.1%
The Acropolis of Mycenae & Atreus' Treasure	6,271	6,862	9.4%
The Acropolis of Athens	51,430	51,251	-0.3%
Sounio	7,307	7,554	3.4%
The Acropolis of Lindos	699	456	-34.8%
Kameiros (Rhodes)	85	150	76.5%
Ancient Olympia	3,420	3,917	14.5%
Knossos (Crete)	3,664	3,028	-17.4%
Phaistos (Crete)	410	364	-11.2%
Ancient Korinthos ⁽¹⁾	3,162	3,484	10.2%
Mystras ⁽¹⁾	1,891	1,511	-20.1%
Delphi	7,735	7,950	2.8%
Other archaeological sites	74,754	98,356	31.6%
II. VISITORS WHO PAID TICKET			
	2016	2017	Change 2017/2016
Total number of visitors who paid ticket (C+D)	155,311	206,359	32.9%
C. Museums	69,817	88,170	26.3%
D. Archaeological sites	85,494	118,189	38.2%
III. VISITORS WITH FREE ADMISSION TICKETS			
	2016	2017	Change 2017/2016
Total number of visitors with free admission ticket (E+F)	170,007	151,730	-10.8%
E. Museums	88,102	78,197	-11.2%
F. Archaeological sites	81,905	73,533	-10.2%
IV. RECEIPTS (euros)			
	2016	2017	Change 2017/2016
Total Receipts (G+H)	965,428.00	1,343,837.00	39.2%
G. Museums	324,756.00	381,676.00	17.5%
H. Archaeological sites	640,672.00	962,161.00	50.2%

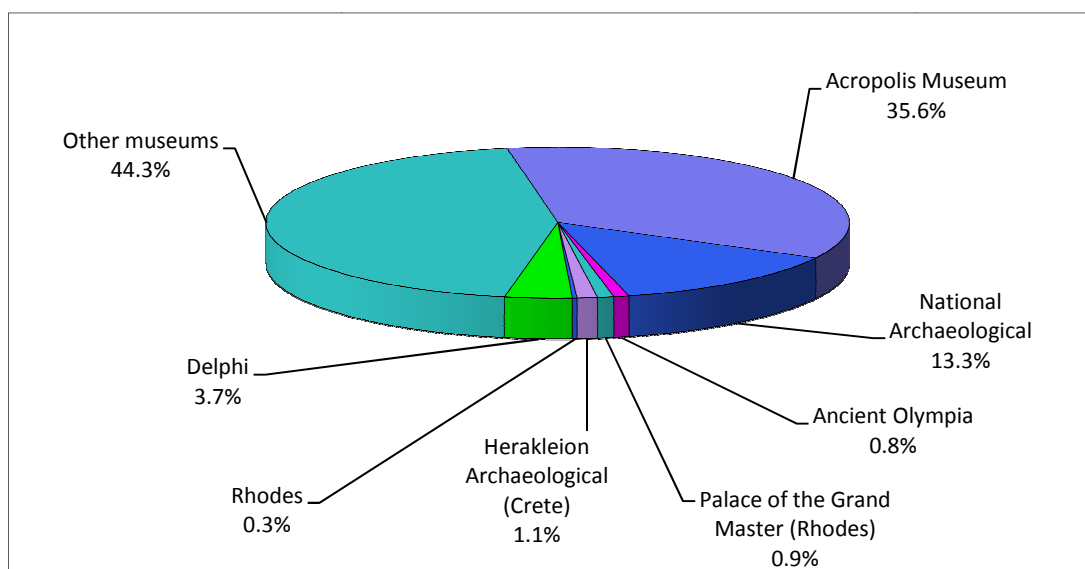
⁽¹⁾ Flat rate ticket, valid both for the museum and the archaeological site.

The following graphs depict the evolution of the receipts (Graph 2), as well as the number of visitors by Museum and Archaeological Site (Graphs 3 and 4, respectively).

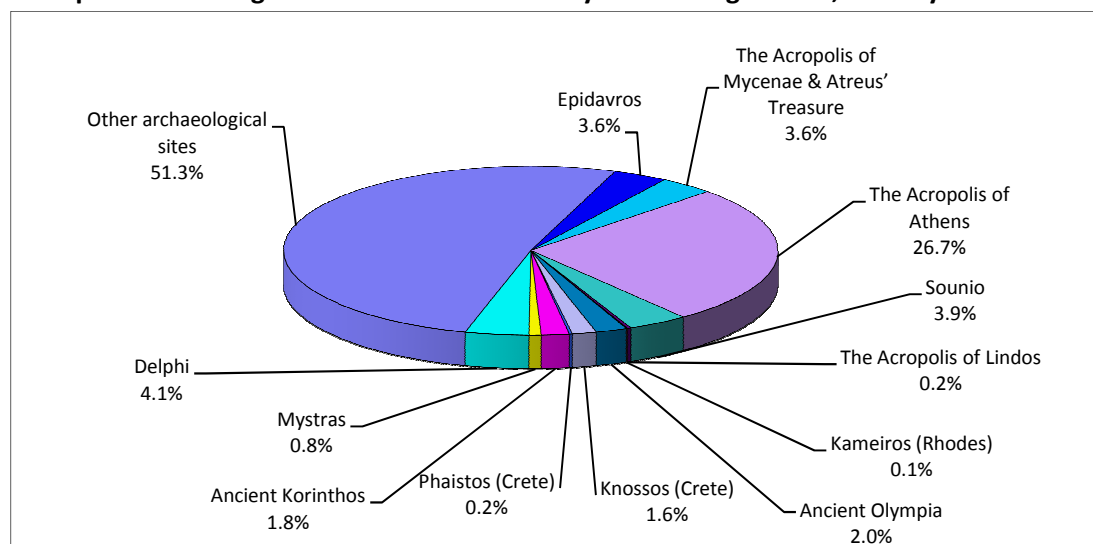
Graph 2: Receipts from Museums and Archaeological Sites (Jan 2012 - Jan 2017)



Graph 3: Percentage distribution of Visitors by Museum, January 2017



Graph 4: Percentage distribution of Visitors by Archaeological site, January 2017



**TABLE 2: VISITORS OF MUSEUMS AND ARCHAEOLOGICAL SITES - TOTAL RECEIPTS
(2015, 2016 AND JANUARY 2016 & 2017)**

I. VISITORS					
Museums and Archaeological sites	2015	2016	JANUARY		change
			2016	2017	2017/2016
Total number of visitors (A+B)	14,725,895	14,040,961	325,318	358,089	10.1%
A. Museums (C+E)	4,405,842	4,476,288	157,919	166,367	5.3%
Acropolis Museum	1,510,615	1,406,096	60,829	59,178	-2.7%
National Archaeological	476,754	447,093	19,029	22,121	16.2%
Ancient Olympia	135,972	124,136	1,743	1,407	-19.3%
Palace of the Grand Master (Rhodes)	251,091	237,361	1,315	1,493	13.5%
Herakleion Archaeological (Crete)	201,657	355,237	2,672	1,859	-30.4%
Rhodes	87,824	71,623	416	434	4.3%
Delphi	205,369	166,091	5,947	6,166	3.7%
Other museums	1,536,560	1,668,651	65,968	73,709	11.7%
B. Archaeological Sites (D+F)	10,320,053	9,564,673	167,399	191,722	14.5%
Epidavros ⁽¹⁾	443,565	375,437	6,571	6,839	4.1%
The Acropolis of Mycenae & Atreus' Treasure	402,565	342,854	6,271	6,862	9.4%
The Acropolis of Athens	2,043,868	1,807,580	51,430	51,251	-0.3%
Sounio	236,285	222,800	7,307	7,554	3.4%
The Acropolis of Lindos	580,875	421,070	699	456	-34.8%
Kameiros (Rhodes)	152,204	111,799	85	150	76.5%
Ancient Olympia	439,836	423,424	3,420	3,917	14.5%
Knossos (Crete)	632,288	611,455	3,664	3,028	-17.4%
Phaistos (Crete)	94,689	77,071	410	364	-11.2%
Ancient Korinthos ⁽¹⁾	141,490	153,307	3,162	3,484	10.2%
Mystras ⁽¹⁾	117,010	114,293	1,891	1,511	-20.1%
Delphi	319,754	290,705	7,735	7,950	2.8%
Other archaeological sites	4,715,624	4,612,878	74,754	98,356	31.6%
II. VISITORS WHO PAID TICKET					
	2015	2016	JANUARY		change
			2016	2017	2017/2016
Total number of visitors who paid ticket (C+D)	10,544,249	8,749,957	155,311	206,359	32.9%
C. Museums	2,867,641	2,406,665	69,817	88,170	26.3%
D. Archaeological sites	7,676,608	6,343,292	85,494	118,189	38.2%
III. VISITORS WITH FREE ADMISSION TICKETS					
	2015	2016	JANUARY		change
			2016	2017	2017/2016
Total number of visitors with free admission ticket (E+F)	4,181,646	5,291,004	170,007	151,730	-10.8%
E. Museums	1,538,201	2,069,623	88,102	78,197	-11.2%
F. Archaeological sites	2,643,445	3,221,381	81,905	73,533	-10.2%
IV. RECEIPTS (euros)					
	2015	2016	JANUARY		change
			2016	2017	2017/2016
Total Receipts (G+H)	56,224,962.00	86,647,638.00	965,428.00	1,343,837.00	39.2%
G. Museums	12,385,213.00	13,448,464.00	324,756.00	381,676.00	17.5%
H. Archaeological sites	43,839,749.00	73,199,174.00	640,672.00	962,161.00	50.2%

⁽¹⁾ Flat rate ticket. valid both for the museum and the archaeological site.

EXPLANATORY NOTES

Survey on Museums and Archaeological Sites Attendance	The Survey on Museums and Archaeological Sites Attendance has been producing results since 1970. The survey collects data from the Archaeological Receipts Fund (ARF) of the Ministry of Culture and Sports concerning the number of visitors and the receipts from the tickets sold in the Museums and Archaeological sites of the country. The corresponding data for the Acropolis Museum are available from December 2009 onwards.
Legal Framework	The survey is conducted since 1970 on a regular basis and it produces results on a monthly and yearly basis. in compliance with the Joint Ministerial Decision 15189/B379/73.

Reference Period 01/01/2017 to 31/01/2017.

Methodology and Definitions The Survey is conducted on a monthly basis from data collected from the Archaeological Receipts Fund (ARF) of the Ministry of Culture and Sports concerning on the number of visitors and the receipts from the tickets sold in the Museums and Archaeological sites of the country. ELSTAT tabulates the data on Museums and the Archaeological sites for the whole of the Country. by month and by year.

Information on ticket payment

- From January 2002 onwards. the number of Museums' visitors includes both the visitors who have bought a ticket and the visitors with free admission ticket. From 16-06-1996 onwards. the Museums and the Archaeological sites all over Greece have a paid admission for all the visitors. Greeks and foreigners. all over the year. except in the following days. which are free admission days:
- National Holidays (25th of March and 28th of October)
- The first Sunday every month during the five month period from 1 November to 31 March
- The 6th of March (in memory of Melina Merkouri)
- The 18th of April (International Monuments Day)
- The 18th of May (International Museums Day)
- The 5th of June (International Environment Day)
- The last weekend of September. annually (European Heritage Days)

Free admission tickets

The admission to Museums and Archaeological site is free for:

- Young people from EU-countries aged under 18 years. with current identification card to confirm their age.
- Students of Universities and of Higher and Technical Education Institutions or equivalent institutions of EU-countries. as well as of Tour Guide Training Institutes. with valid student identification card or International Student Identity Card (ISIC)
- Employees of the Hellenic Ministry of Culture. with valid professional identity card
- ICOM and ICOMOS cardholders
- Tour Guides with their current working identification card from the Ministry of Development
- Teachers accompanying pupils and students on primary. secondary and tertiary education institution tours
- Journalists with valid journalists' identification card
- Members of Associations and Societies of Friends of Museums and Archaeological Sites
- Official guests of the Greek Government. after relevant approval
- Escorts of blind persons and persons with disabilities
- Free admission cardholders
- Holders of the Culture Card

Number of flat rate tickets

From April 1999 onwards. in some museums and the nearby archaeological sites. in addition to the ordinary ticket. a new "flat rate ticket" was established. which is valid for both the museum and the nearby archaeological site. The total number of these flat rate tickets for **January 2017** was **7,672**.

References More information on the Survey on Museums and Archaeological Sites Attendance and detailed time series are available on: <http://www.statistics.gr/en/statistics/-/publication/SC121/>