



PRESS RELEASE

ISSUING OF MOTOR VEHICLE LICENSES: APRIL 2017

The Hellenic Statistical Authority announces that in April 2017, 13,367 road motor cars (both new and used from abroad) were put into circulation for the first time, recording a 7.5% decrease compared with the corresponding month of 2016 when the number of road motor cars was 14,452. In April 2016, a 24.5% increase had been observed in comparison with the corresponding month of 2015 (Table1, Charts 1,2,3,5). A total number of 8,925 new cars were put into circulation in April 2017 compared with 10,326 in April 2016, recording a 13.6% decrease.

The new motorcycles (over 50cc) that were put into circulation for the first time in April 2017 amounted to 2,739, against 3,770 in 2016, thus recording a 27.3% decrease. In April 2016, a 5.7% increase had been observed in comparison with the corresponding month of 2015 (Table 1, Chart 4). Out of the above motorcycles 2,492 were new, while the corresponding figure in April 2016 was 3,508, recording a 29.0% decrease.

During the period January - April 2017, 51,819 road motor cars (both new and used from abroad) were put into circulation for the first time, representing a 21.1% increase compared to the corresponding period of 2016 when the number of road motor cars was 42,806. During the period January - April 2016 a increase of 5.2% had been observed in comparison with the corresponding period of 2015 (Table3, Charts 6,7). Out of the above number of road motor cars that were put into circulation, from January to April 2017, 31,837 were new, while the corresponding number during the respective period of 2016 was 26,858, recording a 18.5% increase.

During the period January - April 2017 the circulation of new motorcycles (over 50cc) amounted to 7,468 against 10,282 in 2016, thus representing a 27.4% decrease. An increase of 6.1% had been observed during the period January - April 2016 in comparison with the corresponding period of 2015 (Table 3, Charts 6,7). A total number of 6,633 new motorcycles were put into circulation, from January to April 2017, compared with 9,527 during the corresponding period of 2016, recording a 30.4% decrease.

Information:

Trade and Services Statistics Division
Transport, Communications and Mass Media Section
Konstantinos Menexes
Tel: +30 213 135 2500
FAX: +30 213 135 2496
E-mail : k.menexes@statistics.gr

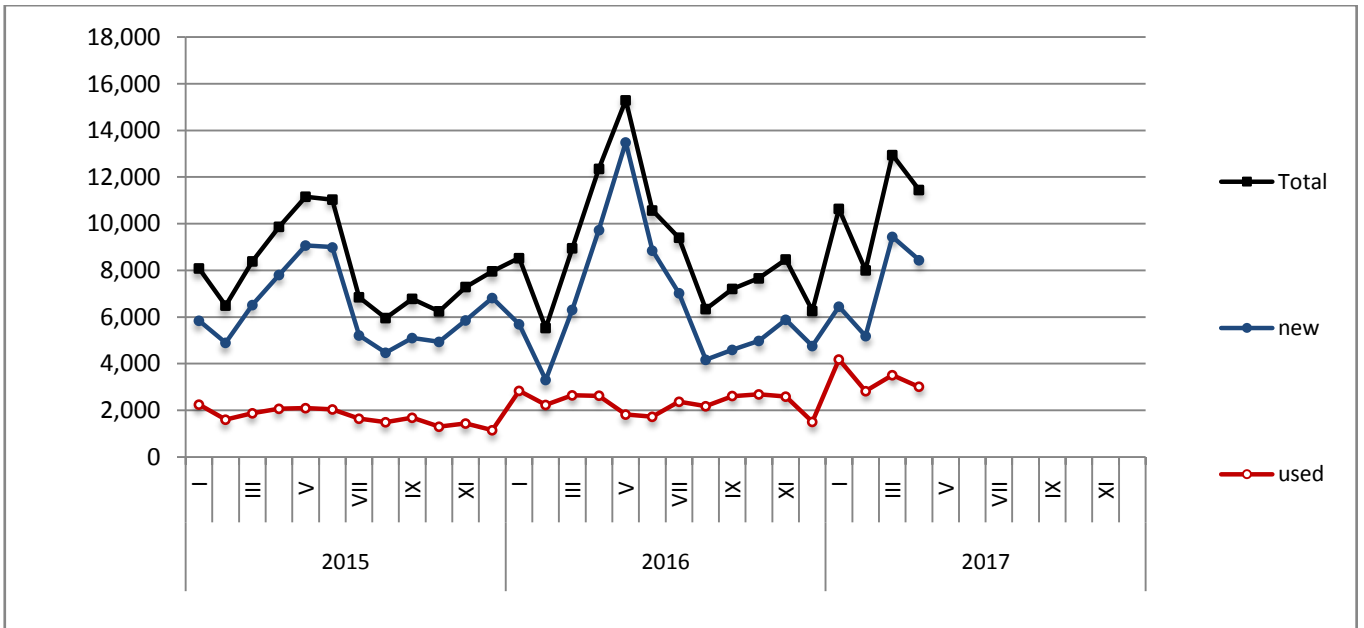
Table 1. Road motor vehicles, both new and used, put into circulation for the first time in Greece: April 2015 - 2017

Category of Road Motor Vehicles	April									Change (%)					
	2015			2016			2017			2016/2015			2017/2016		
	Total	New	Used	Total	New	Used	Total	New	Used	Total	New	Used	Total	New	Used
Greece, total															
Road Motor Vehicles, total	15,178	11,607	3,571	18,222	13,834	4,388	16,106	11,417	4,689	20.1%	19.2%	22.9%	-11.6%	-17.5%	6.9%
1. Road motor cars	11,611	8,260	3,351	14,452	10,326	4,126	13,367	8,925	4,442	24.5%	25.0%	23.1%	-7.5%	-13.6%	7.7%
Passenger Cars	9,872	7,801	2,071	12,360	9,733	2,627	11,453	8,444	3,009	25.2%	24.8%	26.8%	-7.3%	-13.2%	14.5%
Buses	70	15	55	118	21	97	100	19	81	68.6%	40.0%	76.4%	-15.3%	-9.5%	-16.5%
Lorries	1,669	444	1,225	1,974	572	1,402	1,814	462	1,352	18.3%	28.8%	14.4%	-8.1%	-19.2%	-3.6%
2. Motorcycles > 50 cc	3,567	3,347	220	3,770	3,508	262	2,739	2,492	247	5.7%	4.8%	19.1%	-27.3%	-29.0%	-5.7%
Prefecture of Attica															
Road Motor Vehicles, total	7,630	6,646	984	10,436	9,195	1,241	8,593	7,227	1,366	36.8%	38.4%	26.1%	-17.7%	-21.4%	10.1%
1. Road motor cars	6,285	5,334	951	9,057	7,843	1,214	7,542	6,207	1,335	44.1%	47.0%	27.7%	-16.7%	-20.9%	10.0%
Passenger Cars	5,839	5,142	697	8,419	7,477	942	7,002	5,954	1,048	44.2%	45.4%	35.2%	-16.8%	-20.4%	11.3%
Buses	29	5	24	44	15	29	41	15	26	51.7%	200.0%	20.8%	-6.8%	0.0%	-10.3%
Lorries	417	187	230	594	351	243	499	238	261	42.4%	87.7%	5.7%	-16.0%	-32.2%	7.4%
2. Motorcycles > 50 cc	1,345	1,312	33	1,379	1,352	27	1,051	1,020	31	2.5%	3.0%	-18.2%	-23.8%	-24.6%	14.8%

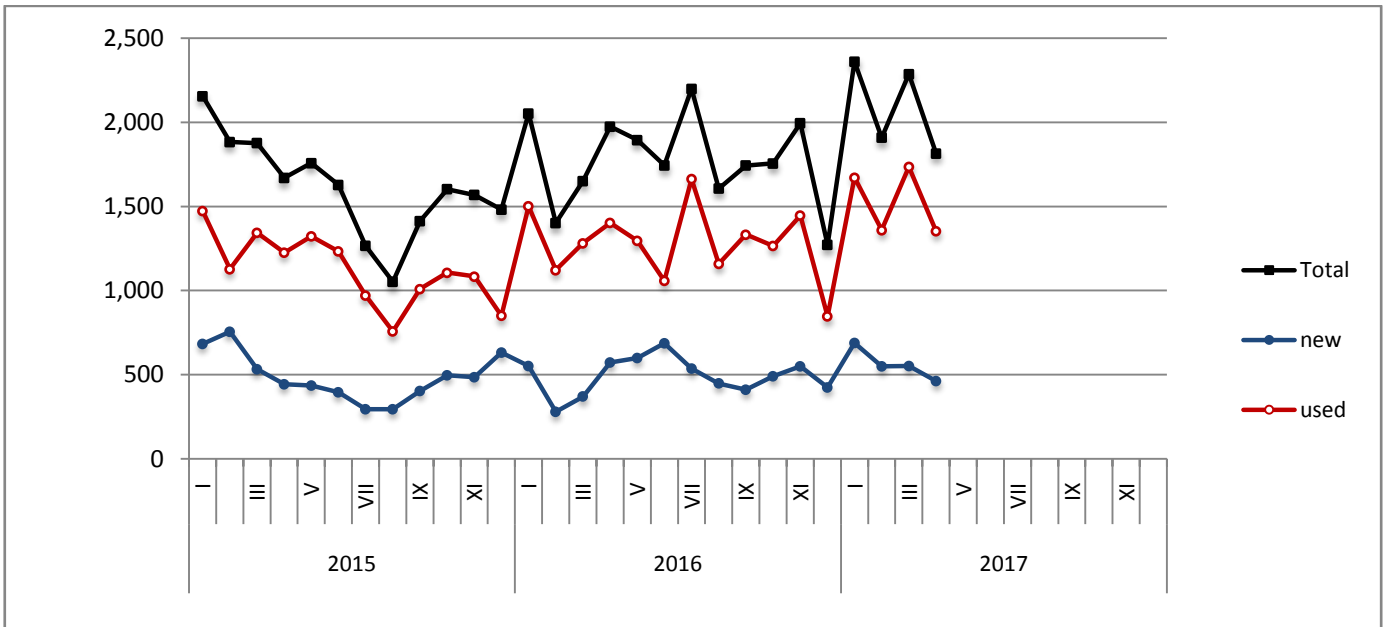
Table 2. Road motor vehicles, both new and used, put into circulation for the first time in Greece: May 2015 - April 2017

Category of Road Motor Vehicles	Average May 2015 - Apr. 2016						Average May 2016 - Apr. 2017			Change (%)		
										Average May 2016 - Apr. 2017 / Average May 2015 - Apr. 2016		
	Total	New	Used	Total	New	Used	Total	New	Used	Total	New	Used
Greece, total												
Road Motor Vehicles, total	12,958	9,644	3,314	14,935	10,706	4,229	15.3%	11.0%	27.6%			
1. Road motor cars	9,858	6,735	3,123	11,494	7,490	4,004	16.6%	11.2%	28.2%			
Passenger Cars	8,222	6,289	1,933	9,525	6,940	2,585	15.8%	10.4%	33.7%			
Buses	66	12	54	88	17	71	33.3%	41.7%	31.5%			
Lorries	1,570	434	1,136	1,881	533	1,348	19.8%	22.8%	18.7%			
2. Motorcycles > 50 cc	3,100	2,909	191	3,441	3,216	225	11.0%	10.6%	17.8%			

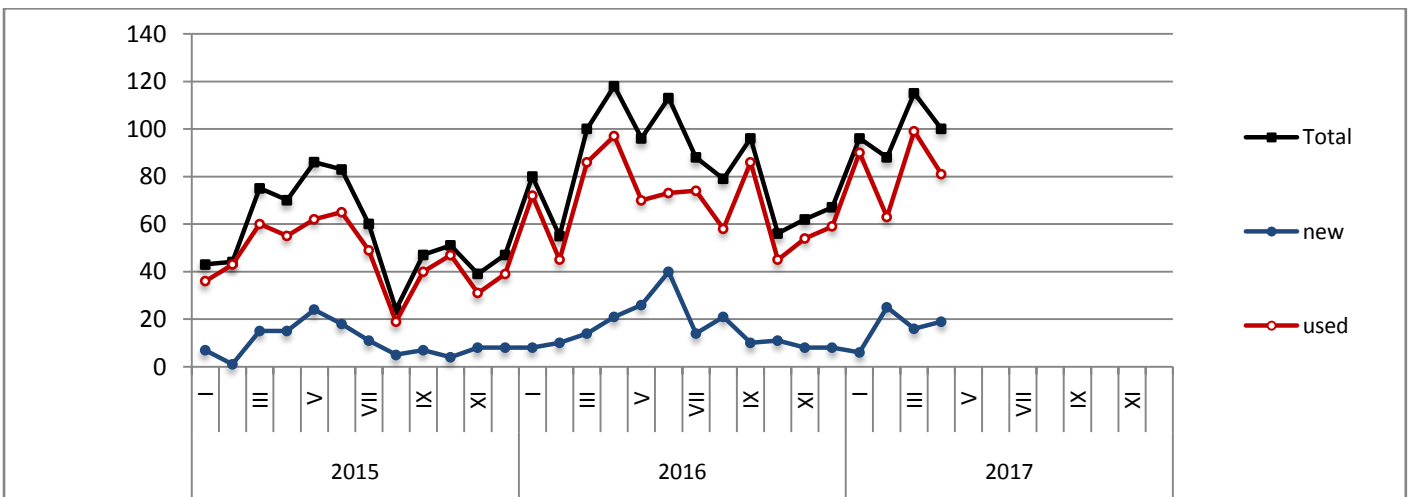
Graph 1: Passenger Cars (January 2015 - April 2017)



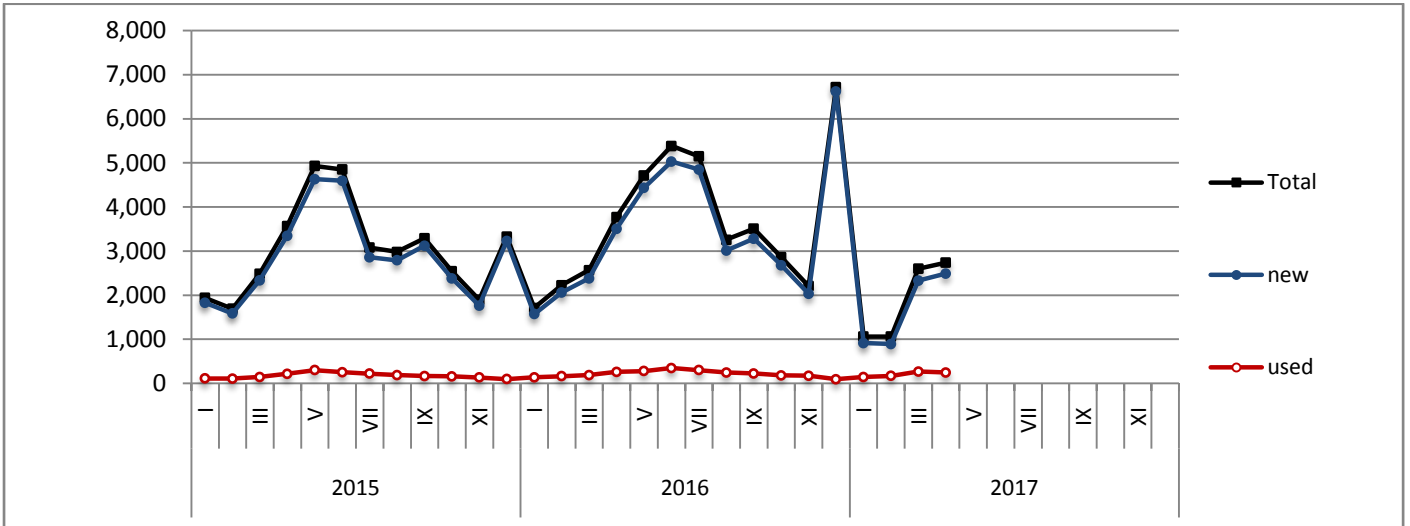
Graph 2: Lorries (January 2015 - April 2017)



Graph 3: Buses (January 2015 - April 2017)



Graph 4: Motorcycles (January 2015 - April 2017)



Graph 5: New Registrations of Motor Vehicles (April 2017)

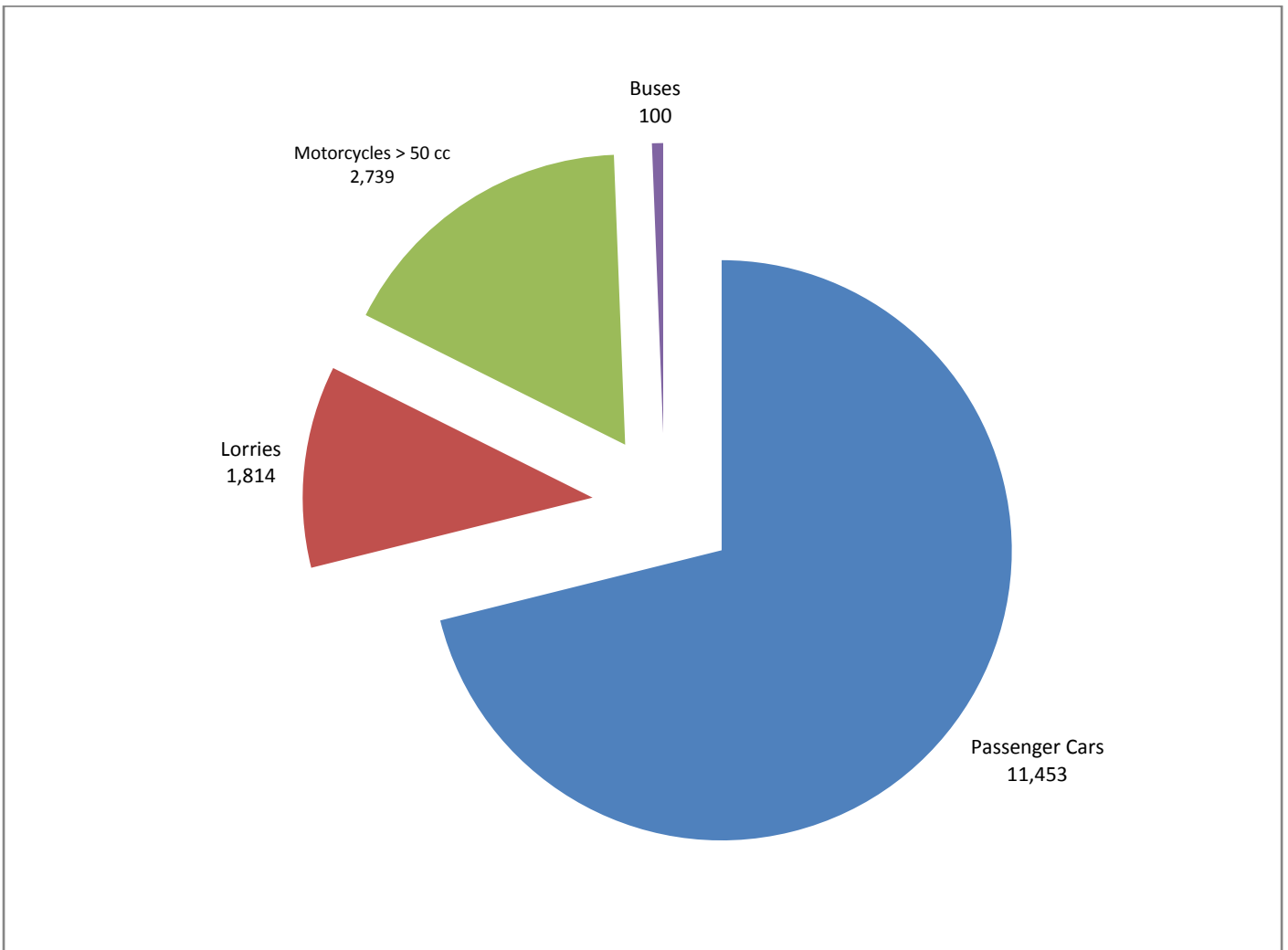
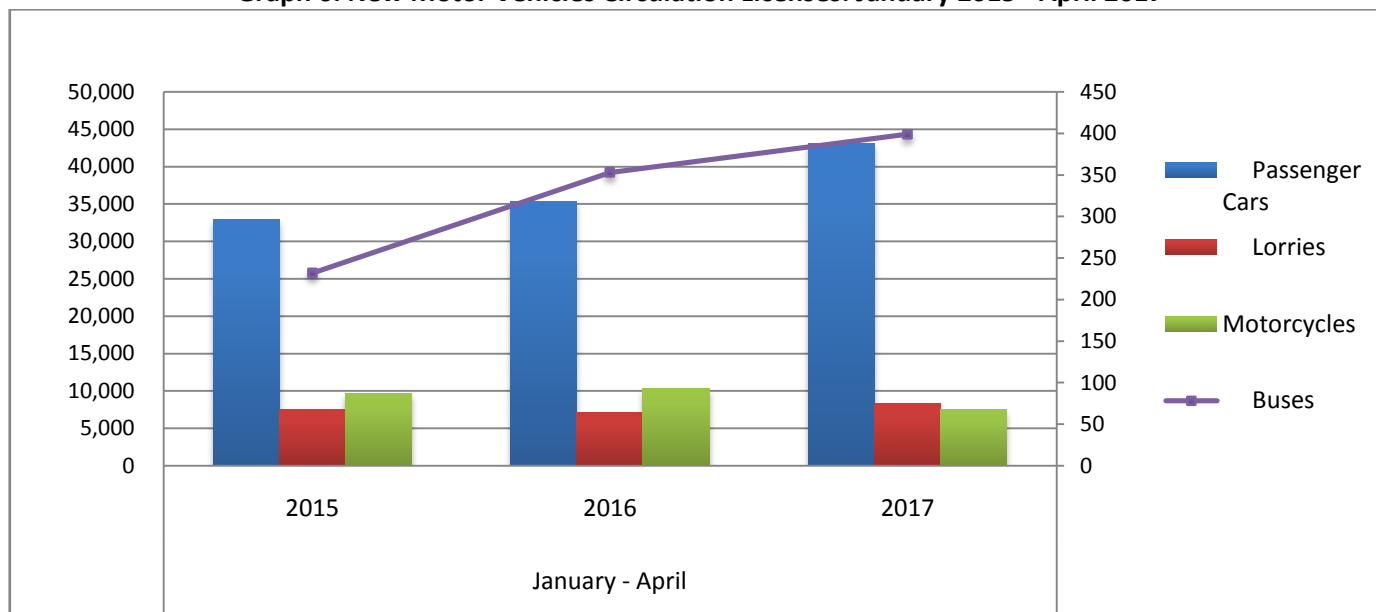


Table 3. Road motor vehicles, both new and used, put into circulation for the first time in Greece: Jan. 2015 - Apr. 2017

Category of Road Motor Vehicles	January - April									Change (%)					
	2015			2016			2017			2016/2015			2017/2016		
	Total	New	Used	Total	New	Used	Total	New	Used	Total	New	Used	Total	New	Used
Greece, total															
Road Motor Vehicles, total	50,359	36,609	13,750	53,088	36,385	16,703	59,287	38,470	20,817	5.4%	-0.6%	21.5%	11.7%	5.7%	24.6%
1. Road motor cars	40,671	27,507	13,164	42,806	26,858	15,948	51,819	31,837	19,982	5.2%	-2.4%	21.1%	21.1%	18.5%	25.3%
Passenger Cars	32,857	25,054	7,803	35,375	25,032	10,343	43,052	29,519	13,533	7.7%	-0.1%	32.6%	21.7%	17.9%	30.8%
Buses	232	38	194	353	53	300	399	66	333	52.2%	39.5%	54.6%	13.0%	24.5%	11.0%
Lorries	7,582	2,415	5,167	7,078	1,773	5,305	8,368	2,252	6,116	-6.6%	-26.6%	2.7%	18.2%	27.0%	15.3%
2. Motorcycles > 50 cc	9,688	9,102	586	10,282	9,527	755	7,468	6,633	835	6.1%	4.7%	28.8%	-27.4%	-30.4%	10.6%
Prefecture of Attica															
Road Motor Vehicles, total	25,595	22,015	3,580	28,269	23,414	4,855	31,102	24,969	6,133	10.4%	6.4%	35.6%	10.0%	6.6%	26.3%
1. Road motor cars	21,159	17,708	3,451	23,622	18,865	4,757	27,725	21,711	6,014	11.6%	6.5%	37.8%	17.4%	15.1%	26.4%
Passenger Cars	18,924	16,348	2,576	21,718	17,982	3,736	25,259	20,508	4,751	14.8%	10.0%	45.0%	16.3%	14.0%	27.2%
Buses	77	17	60	123	28	95	137	45	92	59.7%	64.7%	58.3%	11.4%	60.7%	-3.2%
Lorries	2,158	1,343	815	1,781	855	926	2,329	1,158	1,171	-17.5%	-36.3%	13.6%	30.8%	35.4%	26.5%
2. Motorcycles > 50 cc	4,436	4,307	129	4,647	4,549	98	3,377	3,258	119	4.8%	5.6%	-24.0%	-27.3%	-28.4%	21.4%

Graph 6. New Motor Vehicles Circulation Licenses: January 2015 - April 2017



Graph 7. New Registrations of Motor Vehicles January - April 2017

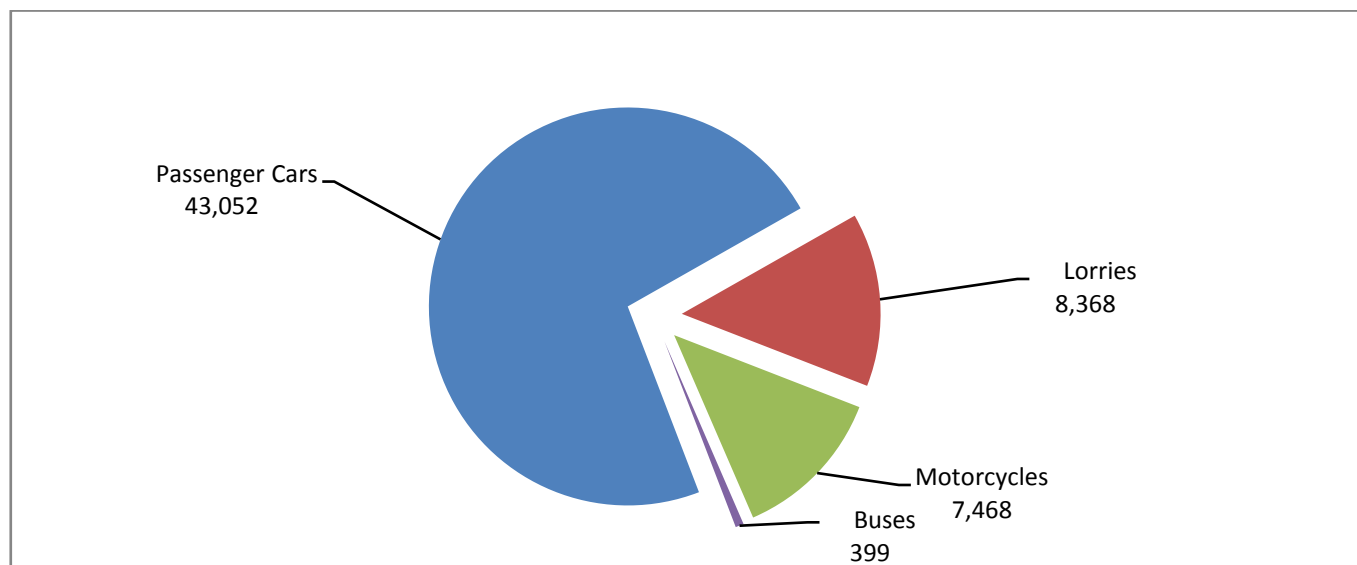


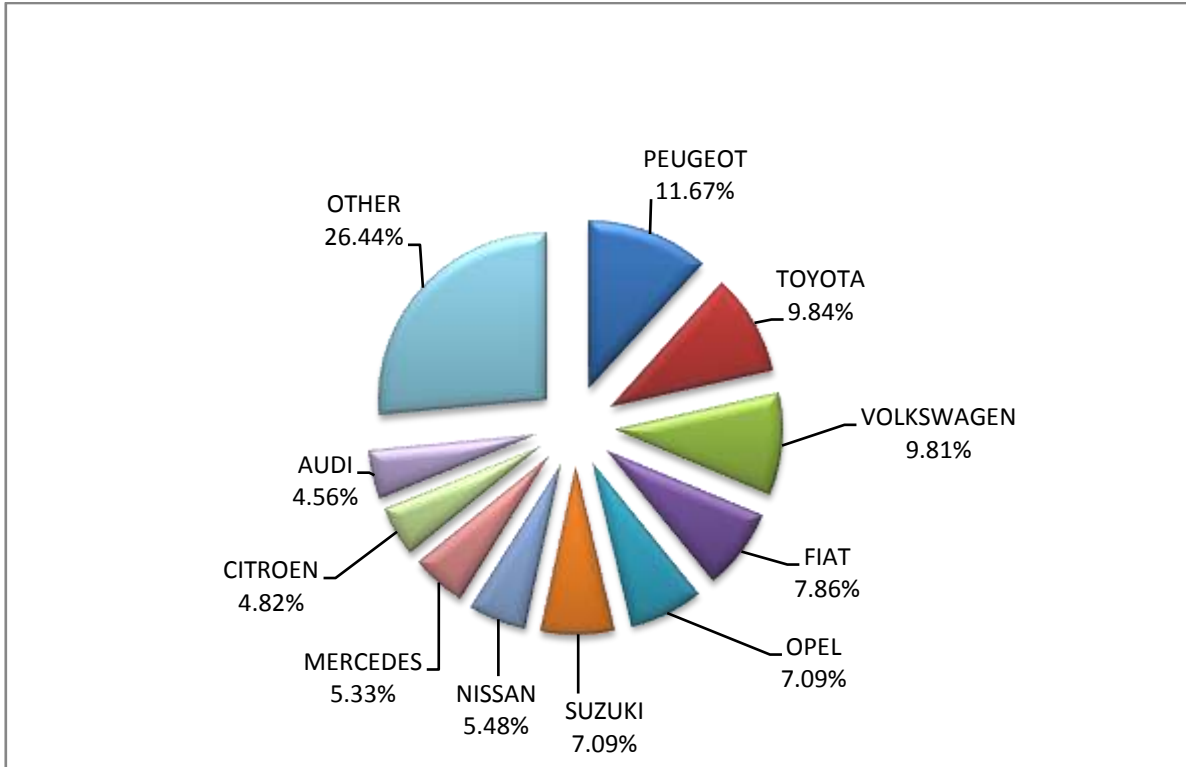
Table 4
Sales of new and used passenger cars by make: April 2017 and January - April 2017

Make	Passenger cars			
	April		January - April	
	new	used	new	used
ALFA ROMEO	50	18	176	60
AUDI	385	26	1,169	145
BENTLEY	-	-	1	-
BMW	210	26	924	163
CARBODIES	-	1	-	1
CHEVROLET	-	27	-	98
CHRYSLER	-	-	-	1
CITROEN	407	143	1,352	633
DACIA	18	16	157	68
DAEWOO	-	1	-	1
DAIHATSU	-	18	-	89
DETHLEFFS	-	2	-	22
FERRARI	-	-	-	4
FIAT	664	243	1,975	1,062
FORD	276	223	1,277	1,046
GM KOREA (CHEVROLET)	-	19	-	48
HONDA	50	37	184	151
HYUNDAI	294	100	1,010	394
ISUZU	-	-	-	1
JAGUAR	2	1	6	5
JEEP	88	3	313	10
KIA	164	22	515	107
LAMBORGHINI	-	-	-	1
LANCIA	2	15	8	62
LAND ROVER	10	7	44	39
LEXUS	2	1	9	3
MAZDA	4	34	71	123
MERCEDES	450	105	1,344	458
MINI	78	19	421	92
MITSUBISHI	7	37	31	149
NISSAN	463	140	2,518	590
OPEL	599	453	2,242	2,045
PEUGEOT	985	122	2,458	602
PLYMOUTH	-	-	-	1
PORSCHE	6	7	22	24
RANGE ROVER	-	-	3	3
RENAULT	340	143	1,194	635
SAAB	-	2	-	8
SEA / MOBILVETT	-	-	-	2
SEAT	116	21	444	113
SKODA	351	53	1,079	256
SMART	47	153	128	715
SSANGYONG	10	-	24	-
SUBARU	3	1	15	8
SUZUKI	599	93	1,962	464
TOYOTA	831	534	3,347	2,362
VOLKSWAGEN	828	134	2,662	621

Table 4 (cont.)
Sales of new and used passenger cars by make: April 2017 and January - April 2017

Make	Passenger cars			
	April		January - April	
	new	used	new	used
VOLKSWAGEN - Z.MANTOS	-	-	2	-
VOLVO	105	9	432	48
TOTAL	8,444	3,009	29,519	13,533

Graph 8. Sales of new passenger cars by make (April 2017)



Graph 9. Sales of new passenger cars by make (January - April 2017)

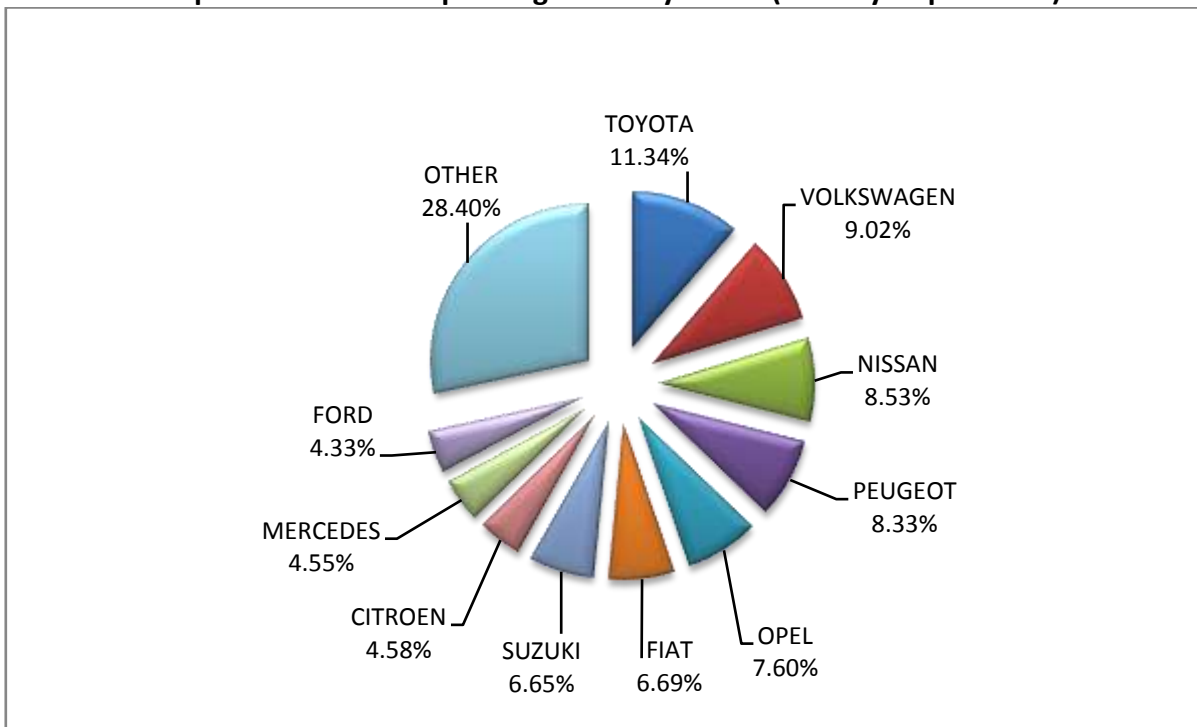


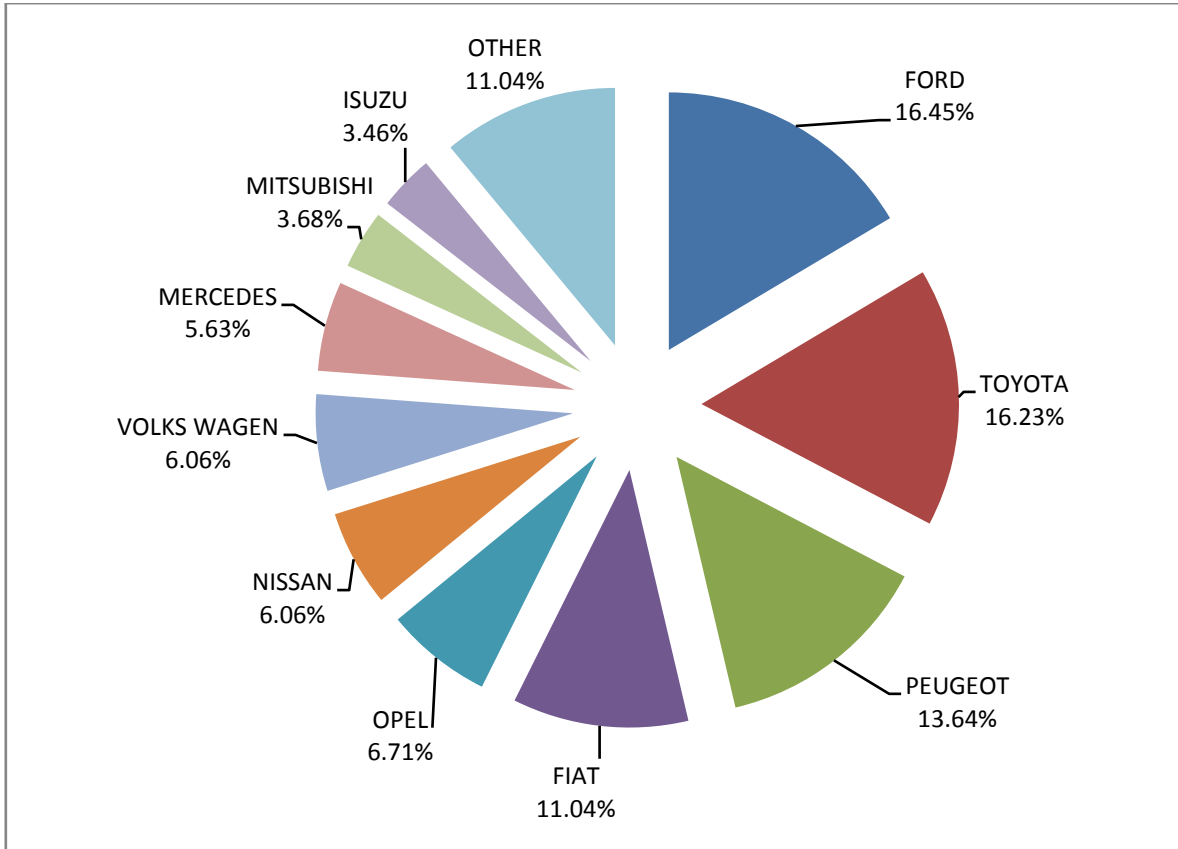
Table 5
Sales of new and used lorries by make: April 2017 and January - April 2017

Make	Lorries			
	April		January - April	
	new	used	new	used
BMW	-	-	-	1
CADILLAC	-	-	-	1
CHEVROLET	-	-	-	1
CITROEN	11	40	73	208
DACIA	-	2	-	6
DAF	-	24	4	99
DAF A. KAOUSSIS SA	4	-	4	-
DAF DYNA TRAILERS S.A.	-	-	1	-
DAF ΗΦΑΙΣΤΟΣ ΣΤΕΦΑΝΟΣ	-	-	1	-
DAF ΝΤΟΥΝΑΣ ΘΕΟΧΑΡΗΣ	-	-	1	-
DAF ΤΑΞΙΑΡΧΟΥ	-	-	1	-
DENNIS EAGLE	-	1	-	1
DODGE	-	1	-	2
DR MOTOR	-	-	-	1
FAUN	-	-	-	1
FCA US LLC (RAM)	-	-	-	1
FIAT	51	172	271	748
FIAT-IVECO	-	5	-	21
FORD	76	146	380	646
GREAT WALL MOTOR	-	-	-	1
HONDA	-	-	-	1
HYUNDAI	-	7	-	30
ISUZU	16	21	89	84
ISUZU A. KAOUSSIS SA	2	-	6	-
IVECO	2	12	5	50
IVECO CENTIGON	1	-	1	-
IVECO A. KAOUSSIS SA	-	-	2	-
IVECO CONTRUCK MECHANICA	1	-	1	-
IVECO DYNA TRAILERS S.A.	1	-	2	-
IVECO MAGIRUS	-	-	-	3
KIA	-	4	-	7
LAND ROVER	-	-	-	4
MAHINDRA	-	1	-	1
MAN	-	36	5	196
MAN A. KAOUSSIS SA	-	-	2	1
MAN DYNA TRAILERS S.A.	-	-	7	-
MAN TECMEC	-	-	4	-
MAN ΕΥΓΕΝΕΙΑΔΟΥ ΜΑΡΙΑ & ΣΙΑ Ο.Ε.	-	-	1	-
MAN ΤΑΞΙΑΡΧΟΥ	3	-	5	-
MAZDA	-	20	-	106
MERCEDES	26	293	92	1,251
MERCEDES A. KAOUSSIS SA	9	-	30	-
MERCEDES DYNA TRAILERS S.A.	1	-	3	-
MERCEDES KOSKERIDIS	-	-	1	-
MERCEDES SMYRLIADIS	1	-	1	-

Table 5 (cont.)
Sales of new and used lorries by make: April 2017 and January - April 2017

Make	Lorries			
	April		January - April	
	new	used	new	used
MERCEDES TRUCK NET	1	-	1	-
MERCEDES ΘΕΟΧΑΡΗΣ ΝΤΟΥΝΑΣ	-	-	5	1
MITSUBISHI	17	51	98	257
MITSUBISHI A. ΚΑΟΥΣΣΙΣ SA	-	-	2	-
MITSUBISHI ΤΑΞΙΑΡΧΟΥ	1	-	1	-
NISSAN	28	107	185	522
NISSAN SMYRLIADIS	-	-	1	1
OAF	-	-	-	2
OPEL	31	78	57	364
PEUGEOT	63	32	275	168
PEUGEOT Z. ΜΑΝΤΟΣ	1	-	1	-
PFAU	-	-	-	1
PIAGGIO	2	5	3	16
PIAGGIO & C SPA A. ΚΑΟΥΣΣΙΣ SA	1	-	1	-
RELIANT	-	-	-	1
RENAULT	7	76	20	362
ROVER	-	1	-	1
SAAB SCANIA	-	-	-	1
SCANIA	1	31	5	121
SCANIA A. ΚΑΟΥΣΣΙΣ SA	-	-	5	-
SCANIA ΕΥΣΤΑΘΙΟΣ ΖΥΓΟΥΡΗΣ & ΣΙΑ ΕΒΕ	-	-	1	-
SCANIA ΘΕΟΧΑΡΗΣ ΝΤΟΥΝΑΣ	1	-	1	-
SCHMITZ CARGOBU	-	-	1	-
SCODA	-	2	-	2
SEAT	-	5	-	12
SKODA	-	-	-	25
SSANGYONG	-	-	2	1
SUZUKI	-	1	-	2
TATA	-	2	-	2
TOYOTA	75	37	451	217
VOLKS WAGEN	28	88	135	340
VOLKS WAGEN ΕΥΣΤΑΘΙΟΣ ΖΥΓΟΥΡΗΣ & ΣΙΑ ΕΒΕ	-	1	-	1
VOLVO	-	50	5	224
VOLVO A. ΚΑΟΥΣΣΙΣ SA	-	-	1	-
VOLVO ΕΥΣΤΑΘΙΟΣ ΖΥΓΟΥΡΗΣ & ΣΙΑ ΕΒΕ	-	-	2	-
TOTAL	462	1,352	2,252	6,116

Graph 10. Sales of new lorries by make (April 2017)



Graph 11. Sales of new lorries by make (January - April 2017)

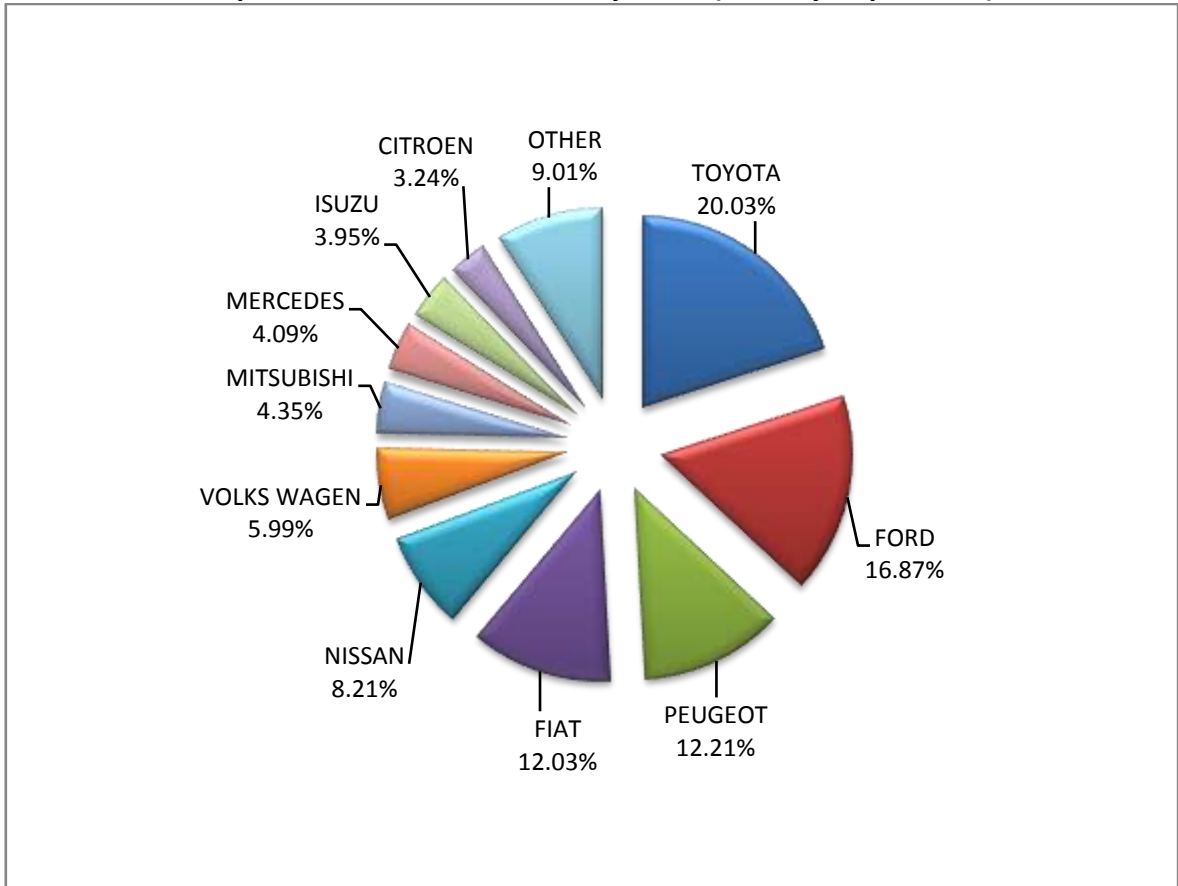


Table 6. Sales of new and used buses by make: April 2017 and January - April 2017

Make	Buses			
	April		January - April	
	new	used	new	used
BOVA	-	2	-	17
DAF	-	1	-	1
EOBUS	-	1	-	4
FIAT	-	1	-	1
FORD	-	2	5	8
IRISBUS	-	3	-	6
IRIZAR	1	-	2	-
ISUZU	-	1	-	2
ITALBUS	-	-	1	-
IVECO	-	2	1	2
IVECO FIAT, FIAT, IVECO, IRISBUS	-	1	-	1
IVECOBUS, KAROSA, IRISBUS, IVECO, HEULIEZ BUS, IKARUS	2	-	2	-
MAN	-	4	1	26
MAN/NEOPLAN	-	-	2	-
MERCEDES	4	36	7	171
MERCEDES ERMISBUS	-	-	5	-
MERCEDES CENTO BUS	-	-	1	-
MERCEDES ERDUMAN	2	-	5	-
MERCEDES GIANNOPOYLOS S.A	-	-	1	-
MERCEDES NIKAS	-	-	8	-
MERCEDES PAPADAKIS	6	1	12	1
MERCEDES NIKAS	3	-	3	-
NEOPLAN	-	2	-	11
OTOKAR	-	1	2	2
RENAULT	-	1	-	5
SCANIA	-	1	-	11
SCANIA HIGER	-	-	2	-
SETRA	1	7	5	23
TEMSA	-	8	1	19
VAN HOOL	-	-	-	2
VOLKSWAGEN	-	2	-	10
VOLVO	-	3	-	7
XIAMEN KING LONG	-	1	-	3
TOTAL	19	81	66	333

Graph 12. Sales of new buses by make (January -April 2017)

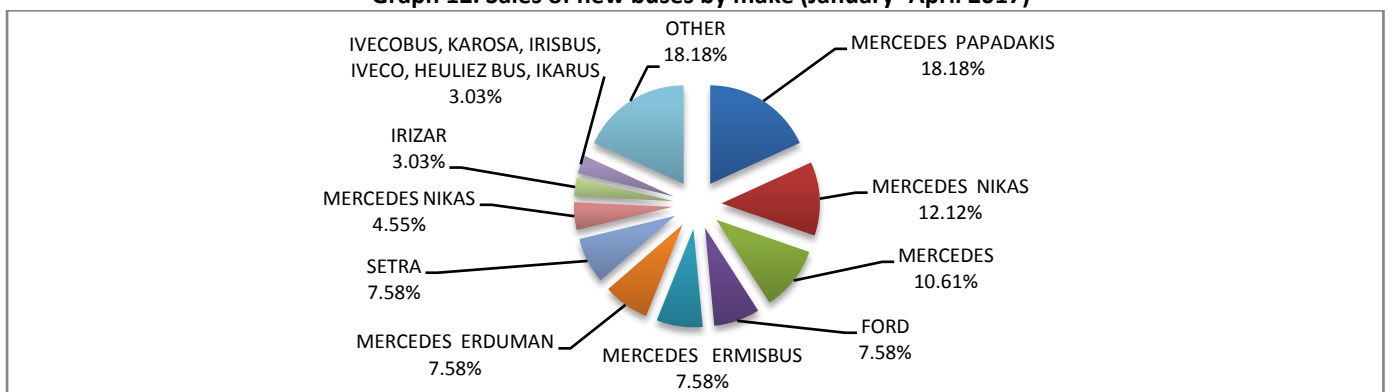


Table 7
Sales of new and used Motorcycles by Make or manufacturer: April and January - April 2017

Make	Motorcycles			
	April		January - April	
	new	used	new	used
ACCESS, GOES	8	-	8	-
ADAMS, MIRAGE, DEMOTO, MKS, MC4YOU	1	-	1	-
ADIVA	-	-	-	1
AEON MOTOR	7	-	24	1
APRILIA	11	14	35	38
APRILIA, PIAGGIO, GILERA	5	2	11	3
ARCTIC CAT, MASSEY FERGUSON	-	1	1	1
BAJAJ	-	-	2	-
BAOTIAN, SUPERKING, WALTON, HONDA	-	-	1	-
BASHAN, APACHI, ISILDAR APACHI, ISILDAR, APACHE , ADVENTUREMOTORS	-	-	20	-
BENELLI	6	-	7	-
BETA	1	-	13	-
BMW	65	6	195	27
BOMBARDIER RECREATIONAL PRODUCTS ING (BRP)	1	1	10	4
BRIXTON	19	1	22	1
BUELL	-	-	1	-
BUYANG	1	-	1	-
CFMOTO	26	-	46	-
CHONGQING LIFAN	-	-	1	-
DAELIM	2	-	19	3
DAYANG, DAYTONA	33	1	247	2
DAYANG, DAYTONA MOTORS, NIPPONIA, SALCANO	82	-	104	-
DAYTONA	26	-	123	1
DERBI	2	-	3	-
DUCATI	18	1	43	6
EAGLE MOTORSPORTS	-	-	1	-
ENFIELD	-	1	-	1
EUROMOTORS	-	-	2	-
EVA, EMBUGGY, VINTAGE, EVANGEL	10	1	12	1
GAS GAS	1	-	1	1
GOUPIL	-	-	-	2
HAOJIANG, SENKE, ZONTES, TAYO, YINGZHI, KIDEN, TANNY, ZHONGYU, RIPPER, FNX, RAFINZ, MONDIAL, FERRO, GB MOTORS	9	-	14	-
HAOJIN	1	-	1	-
HARLEY DAVIDSON	1	4	20	15
HER CHEE, ADLY MOTO, MOTO ROMA	21	-	22	-
HM	-	-	-	1
HONDA	326	41	875	150
HSUN, HISUN, APACHI, ICHIBAN, INCA, FAST POWER, Q-MOTO, EMU, FORSAGE, NISSAMARAN, LAPO MOTORS,STELS	1	-	1	-
HSUN,HISUN,APACHI,ICHIBAN,INCA,FAST POWER,Q-MOTO,EMU,FORSAGE,NISSAMARAN,LAPO MOTORS, STELS,Mx,POLAR	1	-	1	-
HUSABERG	-	-	-	1
HUSQVARNA	1	-	4	2
HYOSUNG & S&T KANUNI	-	-	1	-
HYOSUNG MOTORS	-	-	-	1

Table 7 (cont.)
Sales of new and used Motorcycles by Make or manufacturer: April and January - April 2017

Make	Motorcycles			
	April		January - April	
	new	used	new	used
INDIAN MOTORCYCLE	2	-	5	-
ITALCAR	-	1	-	1
JIAJUE,JINDING,LANYING,DHS,MIROMOTO,ALPHAMOTO,SPRINT,QLINK,MAXON,Rich motors,EUROCKA(CKA),PEDA	-	-	5	-
JIALING, MOTORAN, TRAXX, SPADA, SKYWING, SPD, ASUS, RACING	9	1	22	1
JIANSHE	4	-	15	-
JIANSHE,GEMINI	3	-	7	-
JINLANG, ZIPP, HORS, IVA, Ariic, figuretta motorcycles fat boy, btc, agm, lintex, razory, romet, motors	13	-	22	-
JLAJI, HUATIAN, FEILING, TUTU, EPM, Mondid, KINGWAY, ROMET MOTORS	1	-	3	1
JMQQ, QINGQI, PIONEER, SNOWOLF, POLESTAR, CLEVELAND CYCLEWERKS, SINNIS, SOMOTO, SKYTEAM	-	-	1	-
JMSTAR, SHENKE, HUIBANG, JONWAY, MOTORAN, MINELLI, LAPO MOTORS	-	-	1	-
JONWAY, SHENKE, HUIBANG, JMSTAR	1	-	1	-
KAWASAKI	29	5	76	20
KENBO	1	-	1	-
KL	1	-	14	-
KTM	19	-	71	5
KWANG YANG	-	1	-	6
KYMCO	247	39	455	99
LEONART	-	1	-	1
LIFAN, SKYGO, HONLEI, BISAN-LIFAN, TRUVA,SALCANO, YUKI,RAMZEY, BRANSON,SUMCO, NEMO, XPLOER, LEVO, ACONDA	20	-	74	1
LINHAI	-	-	6	-
LINHAI, KUBA, ONLINE, LHY	3	-	10	-
LML	1	-	8	1
LONCIN, KINLON, DORTON, CCM	2	-	4	-
LONCIN,KINLON,LONGTING,KUBA,YUKI,MONDIAL,STMAX,KANUNI,MOTORAN,ASYA,QUSWA,PUMAREX,RALLY USA,MOD,CCM	9	-	10	-
MALAGUTI	-	-	-	1
MBK	-	6	-	8
MG MOTO	47	-	225	1
MINSK, ZONGSHEN, IRIBIS, MONDIAL, LEXMOTO, JUNAK, HONLEY, OVERBIKES	-	-	1	-
MODENAS	1	-	19	-
MONDIAL	-	-	1	-
MOTO GUZZI	1	-	7	-
MOTO S.P.A	2	-	4	-
MV AGUSTA	1	1	2	1
MZ MOTORRAD	-	-	-	1
NACIONAL MOTOR	-	-	-	1
NIPPONIA	-	-	2	-
ODES, LIANGZI, BRANSON	2	-	2	-
PEUGEOT	25	1	69	4

Table 7 (cont.)
Sales of new and used Motorcycles by Make or manufacturer: April and January - April 2017

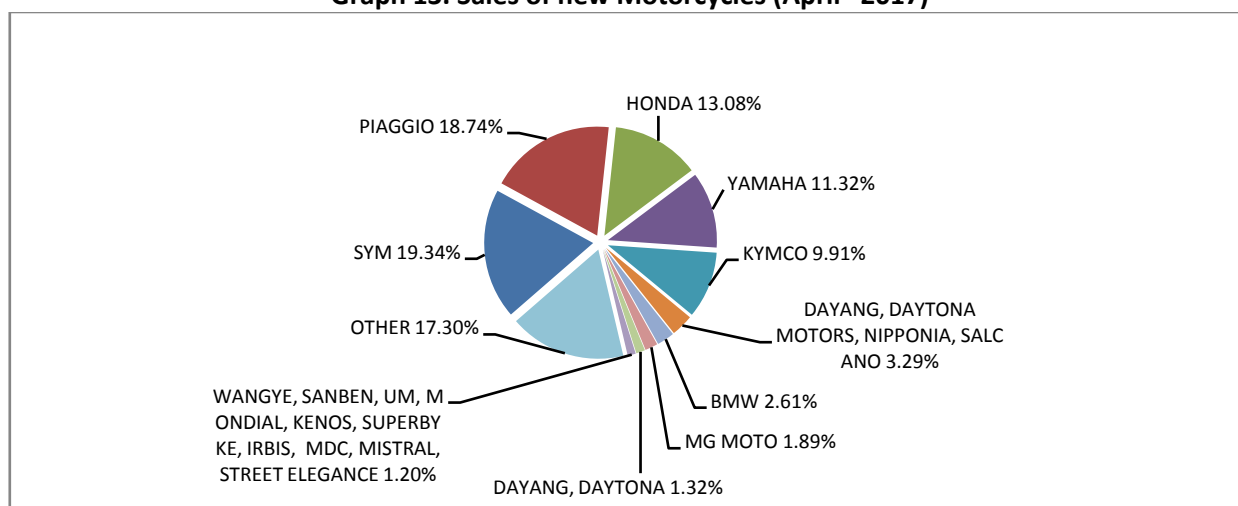
Make	Motorcycles			
	April		January - April	
	new	used	new	used
PGO	2	-	3	-
PIAGGIO	467	30	1,237	114
PIONEER, LEXMOTO, PULSE, BULLIT, OMAKS, JHC, ASYA, MONDIAL, KUBA,ACE	-	-	1	-
POLARIS	7	-	10	1
QINGQI, KADIRGA	1	-	1	-
QINGQI, PIONEER, KENROD, PEUGEOT	-	-	-	1
QINGQI,PIONEER,i-moto,SUPERBYKE,KENROD, QLINK,YUKI,SACHS-Bikes,Daytona	1	-	4	-
QJ , QJIANG, KEEWAY, LEONE	11	-	21	-
QJ, QJIANG, KEEWAY, LEONE, KUBA, RKS, GENERIC, EXPLORER, RIDE, VENGO	2	-	16	-
QJ,QJIANG, KEEWAY, LEONE, RKS, tell, VENGO	6	-	14	-
QUADRO	1	-	2	-
RIYA, HONLING,YAMAKOYO,TIANYING, GOES, SANYOU,BM,FUN BIKE,WOTTA	3	-	9	-
SANYE FUXIN, MONDIAL, ISILDAR APACHI, APACHI, ISILDAR, LINTEX	1	-	1	-
SANYOU, TARO, CHUANGTAI, GOES, JUNAK, WOTTAN, BARTON MOTORS, MAGPOWER, CAPIRELLI, OVERBIKES, PEDA	1	-	1	-
SHANYANG	-	2	1	2
SHINERAY	5	-	12	-
SKYJET	1	-	1	-
SKYTEAM, SACIN, METALCO, SOKUDO, BAZUKA, MINICO, MOTOS BORDOY, SUMCO, MOTOSBASI, CSR	4	-	14	-
SUZUKI	21	19	57	51
SWM	-	-	1	-
SYM	482	9	1,215	40
TANGJUNOULING, SEEES, SIMPLICITYS SRL, MMSS.A., NOUElectric, VROMOS KIWI, Imporvia, Lda, BOX-E,ELECTA	-	-	1	-
TGB	3	-	6	2
TIANMA, FASPIDER, GARELLI	-	-	1	1
TIANYING, RIYA, QISHENG, YAMAKOYO, HONGLING, ZIPP, TOROS, ROMET, ROMET MOTORS, ROUTER, VENTO, ASYA, BENYCO, BARA	3	-	7	-
TM RACING	1	-	2	-
TRIUMPH	9	-	41	3
VICTORY MOTORCYCLES DIVISION, POLARIS INDUSTRIES INC	1	-	1	-
WANGYE, SANBEN, UM, MONDIAL, KENOS, SUPERBYKE, IRBIS, MDC, MISTRAL, STREET ELEGANCE	30	-	49	-
XGJAO, KAISAR, SKYJET, SOKON, YUKI,AJS, VEEROAD, DAYTONA MOTORS, YUAN,KRAL, PULSE, CELIK, LEXMOTO, SOKON	7	-	21	-
XINYANG	-	-	2	-
YADEA, ZTECH, MONDIAL, E-MON	1	-	1	-
YAMAHA	282	55	814	201
YIBEN, MEIDUO, VONROAD, WUBEN, NIM	-	-	1	-

Table 7 (cont.)

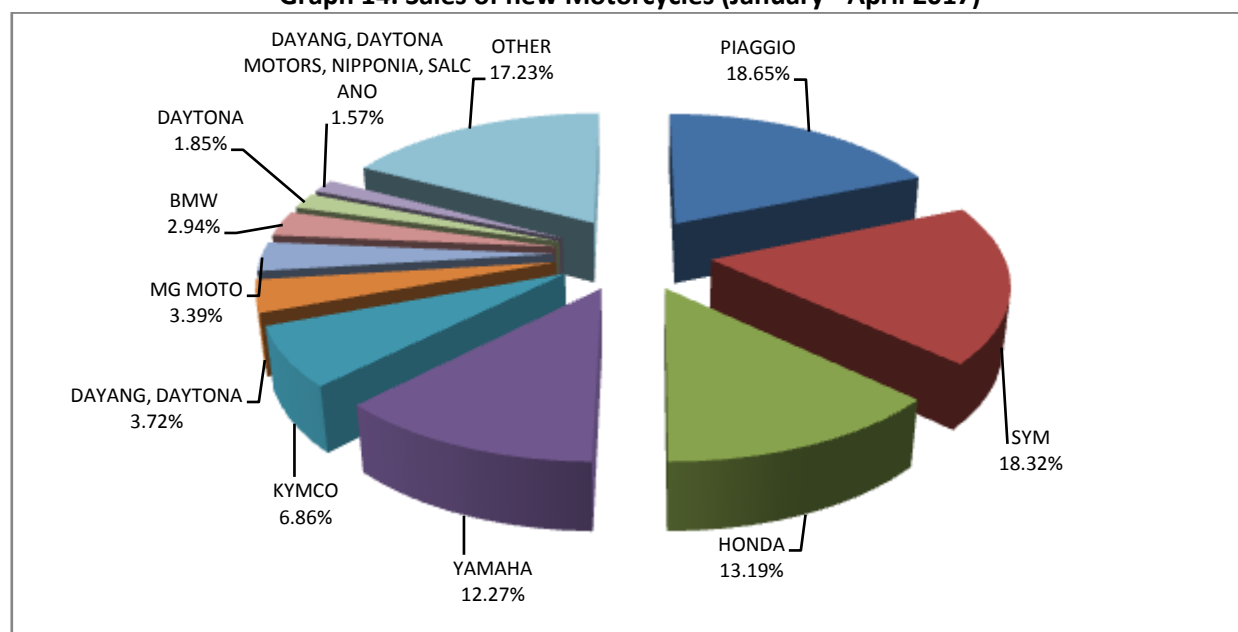
Sales of new and used Motorcycles by Make or manufacturer: April and January - April 2017

Make	Motorcycles			
	April		January - April	
	new	used	new	used
YINGANG	1	-	1	-
YINXIANG,KENBO,VENOM,CHEETA,ZIPP,NEMO,FEKON,ANATOLIA,CANBO	2	1	9	2
ZHEJIAN	-	1	-	1
ZHONGNENG, ZNEN, DADO, DIRECT BIKES, GOWINN, VIVACOX, NECO, AGM, LEE, ASYA	-	-	5	-
ZHONGNENG, ZNEN, DIRECT BIKES, SUNSTO, LEARNERLEGAL, SCOOTTE	1	-	4	-
ZONGSHEN, ZIP STAR, PIAGGIO, HONLEY, LEXMOTO, MONDIAL, PULSE, OVERBIKES, XR HORIZONT, KTNS, DERRACE	2	-	3	-
ZONGSHEN, ZIPSTAR, ZEALSUN, KENTO	1	-	2	-
ZXMCO, ZHONGXING, BEWHEEL, TURBHO, RAZZO, MOTORAN, RABBIT MOTORS	2	-	5	-
TOTAL	2,492	247	6,633	835

Graph 13. Sales of new Motorcycles (April 2017)



Graph 14. Sales of new Motorcycles (January - April 2017)



EXPLANATORY NOTES

Survey on the issuing of new road motor vehicle circulation licenses	The survey on the issuing of new motor vehicle circulation licenses is a census survey. The released data give information, at country level, on the brand and type of the motor vehicle, as well as whether it is new or used. The survey does not include vehicles that move on rails, trolley busses, agricultural tractors and machinery. In addition, the following are excluded: all motor vehicles of the Armed Forces, Police, Fire Brigade, State Services, Diplomatic Corps, Foreign Missions, and Invalids of Wars, as well as motorcycles with a cylinder capacity less than 50 cc.
Legal basis	Law 3832/2010
Reference Period	April 2017
Coverage	The production of monthly data is based on the registers held by the Ministry of Infrastructure, Transport and Networks, which records all the monthly changes observed in the vehicle registration licenses at country level.
Definitions	<p>Road motor vehicle is any vehicle that, irrespective of the number of wheels, is moved by an engine and is designed to transport persons or cargo or both of them, either they are on the same single vehicle or on a trailer carried by the main motor vehicle.</p> <p>New road motor vehicle is any motor vehicle that is registered for the first time in Greece during the reference month and has not been put into circulation in any other country.</p> <p>Used motor vehicle is any motor vehicle that is registered for the first time in Greece and has been imported as a used one from abroad</p> <p>Passenger motor vehicle: it is a motor vehicle designed to carry mostly people, having no more than 9 seats, including the driver's seat.</p> <p>Bus: it is a motor vehicle, which is designed to carry mostly people, having more than 10 seats, including the driver's seat. (In the corresponding tables of this Press Release, this category also includes articulated buses.)</p> <p>Lorry: it is motor vehicle designed to carry mostly cargo. (In the corresponding tables of this Press Release, this category also includes tractors, tow trucks, articulated tractors, and trucks with trailers).</p> <p>Motorcycle: any two-wheeled motor vehicle, with or without sidecar, with maximum authorized design speed over 45 km/h, or in case it is powered by a combustion engine, with a cylinder capacity of 50 cc or over (In the corresponding tables of this Press Release, this category also includes the three-wheeled motor vehicles – motor tricycles).</p> <p>Tricycle motor vehicle: it is a motor vehicle with three symmetrical wheels with maximum authorized design speed over 45 km/h, or in case it is powered by a combustion engine, with a cylinder capacity over the 50 cc. This category also includes four-wheel vehicles, except the light four-wheel motorcycles, whose empty vehicle tare (excluding the weight of the fuel or mixture of fuel-oil or the weight of the batteries for electric cars) is up to 400 kg in the case the vehicle is designed for passenger use or up to 550 kg in case the vehicle is designed to carry cargo and whose engine is up to 15KW.</p>
Methodology	Exhaustive Survey. The primary data derive from the Ministry of Infrastructure, Transport and Networks and are based on the issuing of new circulation licenses as they are registered by the Regional Offices for Transport and Communications.
References	More information (graphs, tables) concerning the survey on the issuing of new motor vehicle circulation licenses are available on the webpage of ELSTAT, www.statistics.gr , under the link http://www.statistics.gr/en/statistics/-/publication/SME18/