



PRESS RELEASE

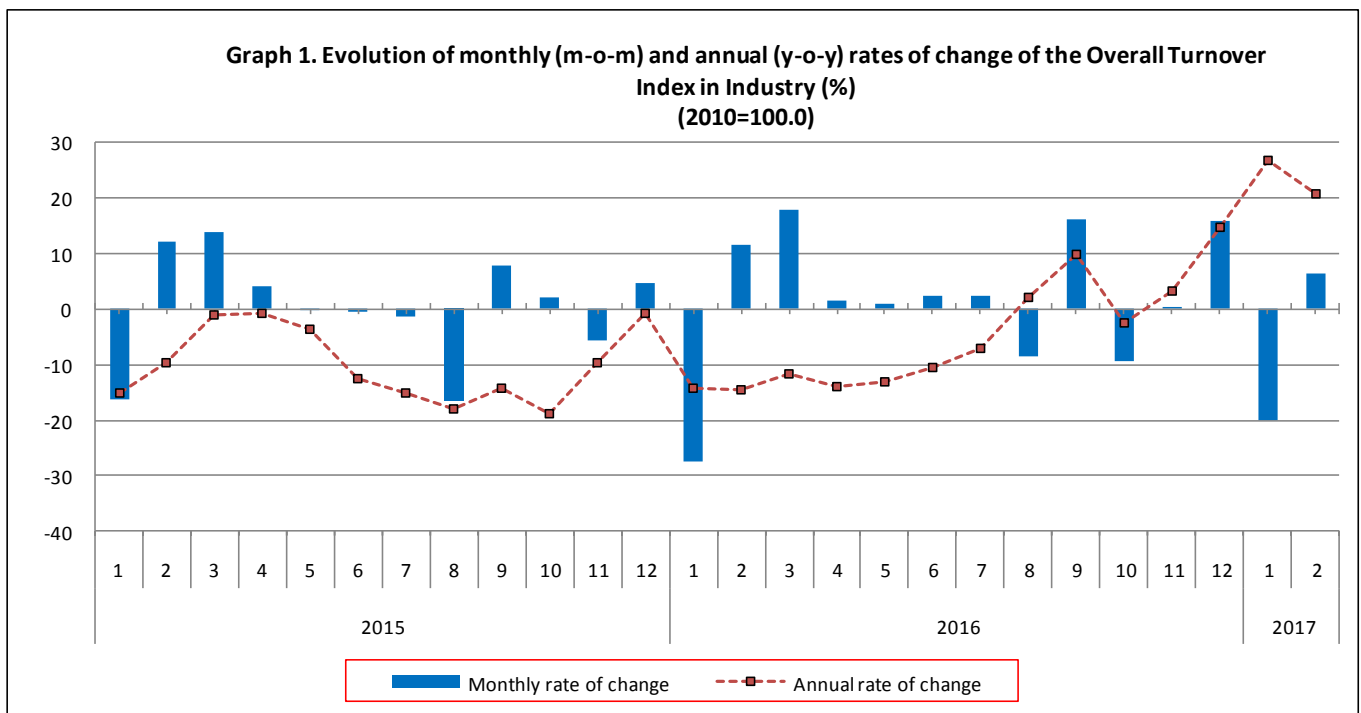
TURNOVER INDEX IN INDUSTRY: February 2017, y-o-y increase of 20.9%

The evolution of the Turnover Index in Industry with base year 2010=100.0 for February 2017, on the basis of provisional data, is as follows:

The Overall Turnover Index in Industry (both domestic and non-domestic market) in February 2017 recorded an increase of 20.9% compared with the corresponding index of February 2016. In February 2016, the corresponding annual rate of change of the Overall Turnover Index in Industry was -14.6% (Table 1).

The Overall Turnover Index in Industry in February 2017, compared with January 2017, recorded an increase of 6.5% (Table 6).

The average Overall Turnover Index in Industry for the 12-month period from March 2016 to February 2017 increased by 0.1%, compared with the corresponding index of the 12-month period from March 2015 to February 2016. In February 2016, the corresponding annual rate of change of the Overall Turnover Index in Industry was -10.4% (Table 13).



Information:

Economic and Short-Term Indices Division
Production Indices Section
Diamantaki Aikaterini, Karathanos Panagiotis
Tel: +30 213 135 2122, 213 135 2706
Fax: +30 213 135 2738
E-mail: a.diamantaki@statistics.gr, p.karathanos@statistics.gr

Evolution of the Overall Turnover Index in Industry

I. Annual changes of the Overall Turnover Index in Industry: February 2017/February 2016

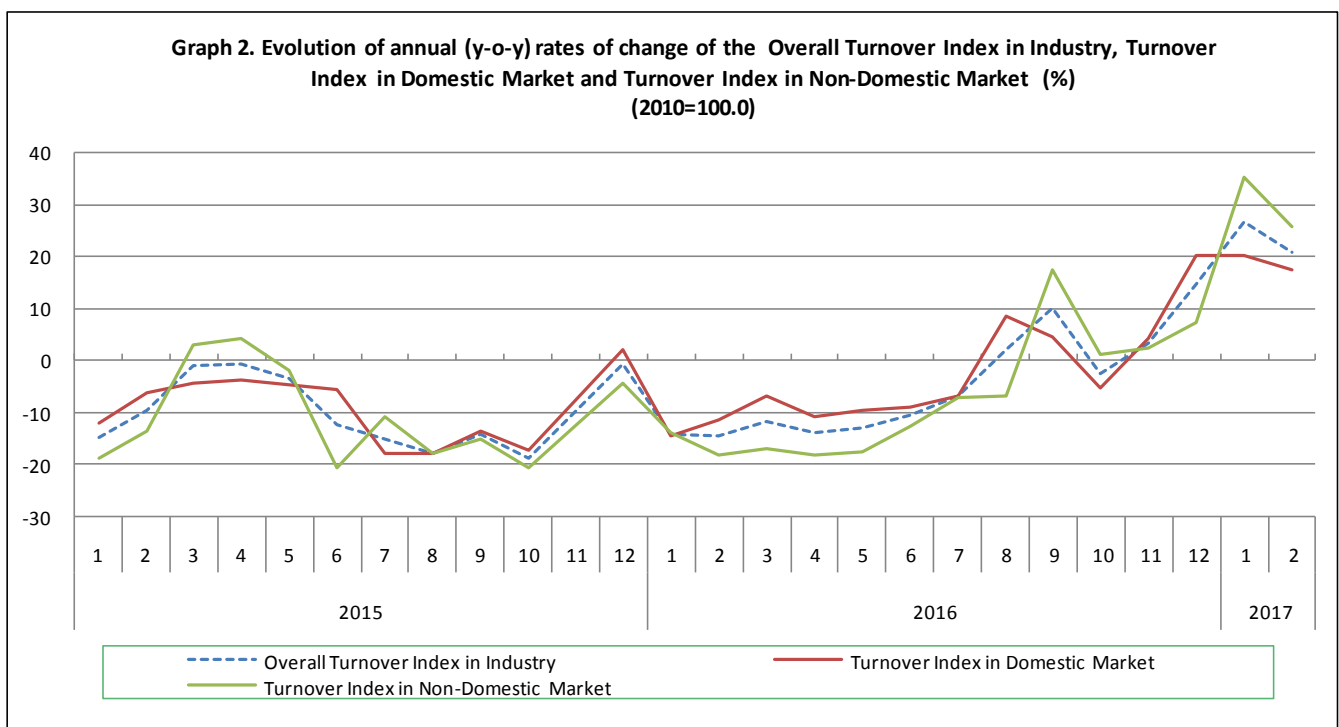
The 20.9% increase in the Overall Turnover Index in Industry in February 2017, compared with the corresponding index in February 2016, was due to the following:

1. Changes in the sub-indices of the industrial sections (Table 1):

- The Turnover Index in Mining and quarrying increased by 10.6%.
- The Turnover Index in Manufacturing increased by 21.1%.

2. Changes in the sub-indices of the domestic and non-domestic market:

- The Turnover Index in Industry for the domestic market increased by 17.3% (Table 2).
- The Turnover Index in Industry for the non-domestic market increased by 25.8% (Table 3).



II. Annual changes of the Turnover Index in Industry in the Domestic Market: February 2017/February 2016

The 17.3% increase of the Turnover Index in Industry for the domestic market in February 2017, compared with February 2016, is due to the following **annual changes in the sub-indices of the following industrial sections (Table 2)**:

- The Turnover Index in Mining and quarrying increased by 17.3%.
- The Turnover Index in Manufacturing increased by 17.3%.

III. Annual changes of the Turnover Index in Industry in the Non-Domestic Market: February 2017/February 2016

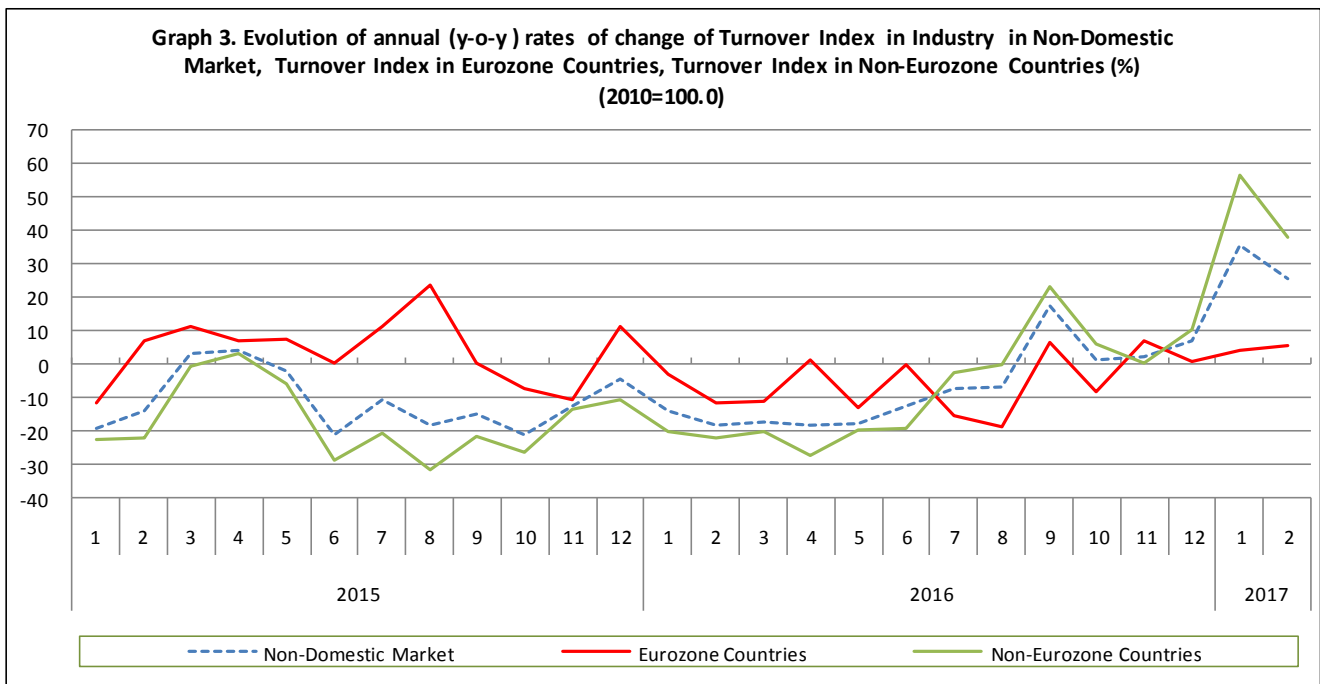
The 25.8% increase of the Turnover Index in Industry for the Non-Domestic market in February 2017, compared with February 2016, was due to the following:

1. Changes in the sub-indices of the industrial sections (Table 3):

- The Turnover Index in Mining and quarrying increased by 5.4%.
- The Turnover Index in Manufacturing increased by 26.3%.

2. Changes in the sub-indices for Eurozone and Non-Eurozone countries:

- The Turnover Index in Industry for Eurozone countries increased by 5.5% (Table 4).
- The Turnover Index in Industry for non-Eurozone countries increased by 38.1% (Table 5).



IV. Monthly changes of the Overall Turnover Index in Industry: February 2017/January 2017

The 6.5% increase of the Overall Turnover Index in Industry in February 2017, compared with the corresponding index in January 2017, was due to the following:

1. Changes in the sub-indices of industrial sections (Table 6):

- The Turnover Index in Mining and quarrying increased by 12.0%.
- The Turnover Index in Manufacturing increased by 6.4%.

2. Changes in the sub-indices of the domestic and non-domestic market:

- The Turnover Index in Industry for the domestic market increased by 8.2% (Table 7).
- The Turnover Index in Industry for the non-domestic market increased by 4.4% (Table 8).

Table 1. Annual rates of change of the Turnover Index in Industry: Total Market

Base year: 2010=100.0

Code	Division	Weights	February			Rate of change (%)	
			2017*	2016	2015	2017/2016	2016/2015
OVERALL INDEX			87.65	72.48	84.89	20.9	-14.6
B	MINING AND QUARRYING	100.00	87.18	78.84	76.04	10.6	3.7
05	Mining of coal and lignite	5.89	145.78	43.53	207.01	234.9	-79.0
06	Extraction of crude petroleum and natural gas	6.90	0.00	0.00	0.00	-	-
07	Mining of metal ores	16.67	86.47	116.24	116.74	-25.6	-0.4
08	Other mining and quarrying products	70.54	90.98	80.66	62.97	12.8	28.1
C	MANUFACTURING	100.00	87.66	72.37	85.04	21.1	-14.9
10	Food	18.21	88.60	88.83	89.83	-0.3	-1.1
11	Beverages	4.57	52.71	49.98	49.34	5.5	1.3
12	Tobacco products	1.10	95.66	121.53	107.07	-21.3	13.5
13	Textiles	1.21	63.41	67.98	61.44	-6.7	10.7
14	Wearing apparel	1.39	40.42	44.97	41.89	-10.1	7.4
15	Leather and related products	0.28	34.75	30.73	31.85	13.1	-3.5
16	Wood and cork	0.72	40.16	41.79	39.31	-3.9	6.3
17	Paper and paper products	2.07	84.24	89.48	86.73	-5.9	3.2
18	Printing and recording services	1.21	44.50	49.74	48.64	-10.5	2.3
19	Coke and refined petroleum products	33.96	104.02	58.67	98.38	77.3	-40.4
20	Chemicals and chemical products	4.97	93.14	96.11	85.00	-3.1	13.1
21	Basic pharmaceutical products and pharmaceutical preparations	2.64	98.70	103.46	90.74	-4.6	14.0
22	Rubber and plastic products	3.26	100.71	100.17	97.39	0.5	2.9
23	Other non-metallic mineral products	4.59	54.07	56.41	46.96	-4.1	20.1
24	Basic metals	9.70	89.17	86.66	96.03	2.9	-9.8
25	Fabricated metal products	3.25	77.68	66.65	67.28	16.5	-0.9
26	Computers, electronic and optical products	0.35	141.13	125.09	99.44	12.8	25.8
27	Electrical equipment	2.43	74.94	75.88	68.81	-1.2	10.3
28	Machinery and equipment n. e. c.	0.88	68.83	72.95	78.04	-5.7	-6.5
29	Motor vehicles, trailers and semi-trailers	0.28	88.80	24.48	67.50	262.7	-63.7
30	Other transport equipment	0.43	61.34	82.15	69.36	-25.3	18.5
31	Furniture	0.84	37.87	39.72	39.57	-4.7	0.4
32	Other manufactured goods	0.25	71.33	78.66	71.50	-9.3	10.0
33	Repair and installation services of machinery and equipment	1.41	46.01	39.13	43.05	17.6	-9.1
MAIN INDUSTRIAL GROUPINGS							
1	Energy	33.61	103.79	58.43	98.36	77.6	-40.6
2	Intermediate goods	31.86	82.19	82.27	80.46	-0.1	2.3
3	Capital goods	4.57	64.62	55.52	60.83	16.4	-8.7
4	Consumer Durables	1.53	51.51	48.15	46.78	7.0	2.9
5	Consumer Non-Durables	28.43	80.36	82.14	79.87	-2.2	2.8

* Provisional data

Note: The indices and the percentage changes are rounded up to two and one decimal figures, respectively, when published.

Table 2. Annual rates of change of the Turnover Index in Industry: Domestic Market

Base year: 2010=100.0

Code	Division	Weights	February			Rate of change (%)	
			2017*	2016	2015	2017/2016	2016/2015
OVERALL INDEX			70.52	60.11	68.03	17.3	-11.6
B	MINING AND QUARRYING	100.00	68.16	58.11	65.68	17.3	-11.5
05	Mining of coal and lignite	9.91	146.81	43.84	208.48	234.9	-79.0
06	Extraction of crude petroleum and natural gas	11.69	0.00	0.00	0.00	-	-
07	Mining of metal ores	10.57	129.09	121.48	104.97	6.3	15.7
08	Other mining and quarrying products	67.83	58.96	60.33	50.09	-2.3	20.5
C	MANUFACTURING	100.00	70.55	60.13	68.06	17.3	-11.6
10	Food	22.06	82.59	81.65	84.12	1.2	-2.9
11	Beverages	6.16	50.36	46.53	47.09	8.2	-1.2
12	Tobacco products	0.97	64.57	78.36	75.12	-17.6	4.3
13	Textiles	0.89	52.97	54.52	51.93	-2.9	5.0
14	Wearing apparel	1.02	40.56	45.01	39.58	-9.9	13.7
15	Leather and related products	0.34	31.09	30.28	32.01	2.7	-5.4
16	Wood and cork	0.89	32.95	35.22	31.83	-6.4	10.7
17	Paper and paper products	2.65	74.45	83.09	80.87	-10.4	2.8
18	Printing and recording services	1.72	43.41	48.02	48.49	-9.6	-1.0
19	Coke and refined petroleum products	31.51	80.19	48.46	74.92	65.5	-35.3
20	Chemicals and chemical products	4.60	86.65	93.38	83.00	-7.2	12.5
21	Basic pharmaceutical products and pharmaceutical preparations	2.45	83.56	92.32	77.25	-9.5	19.5
22	Rubber and plastic products	3.01	81.12	83.98	78.72	-3.4	6.7
23	Other non-metallic mineral products	5.66	40.33	41.30	35.54	-2.3	16.2
24	Basic metals	5.72	63.45	53.98	58.51	17.5	-7.7
25	Fabricated metal products	3.47	45.50	39.43	39.87	15.4	-1.1
26	Computers, electronic and optical products	0.17	126.69	11.02	8.97	1049.6	22.8
27	Electrical equipment	1.82	46.64	52.11	49.93	-10.5	4.4
28	Machinery and equipment n. e. c.	0.77	39.50	36.57	47.20	8.0	-22.5
29	Motor vehicles, trailers and semi-trailers	0.27	109.12	17.22	77.01	533.7	-77.6
30	Other transport equipment	0.40	75.04	83.66	77.76	-10.3	7.6
31	Furniture	1.15	29.72	33.74	34.80	-11.9	-3.0
32	Other manufactured goods	0.27	46.15	53.27	46.71	-13.4	14.0
33	Repair and installation services of machinery and equipment	2.03	46.01	39.13	43.05	17.6	-9.1
MAIN INDUSTRIAL GROUPINGS							
1	Energy	31.37	80.06	48.19	75.12	66.2	-35.9
2	Intermediate goods	28.94	63.61	64.45	61.61	-1.3	4.6
3	Capital goods	5.20	47.13	37.08	42.31	27.1	-12.4
4	Consumer Durables	1.74	42.40	36.37	37.20	16.6	-2.2
5	Consumer Non-Durables	32.75	72.70	72.59	72.63	0.1	0.0

* Provisional data

Note: The indices and the percentage changes are rounded up to two and one decimal figures, respectively, when published.

Table 3. Annual rates of change of the Turnover Index in Industry: Non-Domestic Market

Base year: 2010=100.0

Code	Division	Weights	February			Rate of change (%)	
			2017*	2016	2015	2017/2016	2016/2015
OVERALL INDEX			125.93	100.13	122.57	25.8	-18.3
B	MINING AND QUARRYING	100.00	114.64	108.77	91.00	5.4	19.5
05	Mining of coal and lignite	0.10	0.00	0.00	0.00	-	-
06	Extraction of crude petroleum and natural gas ⁽¹⁾	0.00	-	-	-	-	-
07	Mining of metal ores	25.44	60.98	113.11	123.77	-46.1	-8.6
08	Other mining and quarrying products	74.46	133.14	107.43	79.92	23.9	34.4
C	MANUFACTURING	100.00	126.18	99.94	123.28	26.3	-18.9
10	Food	9.54	119.74	126.04	119.40	-5.0	5.6
11	Beverages	0.98	86.06	99.11	81.43	-13.2	21.7
12	Tobacco products	1.38	144.69	189.63	157.48	-23.7	20.4
13	Textiles	1.93	74.20	81.90	71.27	-9.4	14.9
14	Wearing apparel	2.21	40.27	44.93	44.30	-10.4	1.4
15	Leather and related products	0.15	52.92	32.98	31.04	60.5	6.2
16	Wood and cork	0.37	78.47	76.75	79.10	2.3	-3.0
17	Paper and paper products	0.77	160.41	139.20	132.36	15.2	5.2
18	Printing and recording services	0.07	102.37	141.00	56.56	-27.4	149.3
19	Coke and refined petroleum products	39.47	146.89	77.04	140.57	90.7	-45.2
20	Chemicals and chemical products	5.82	104.70	100.96	88.56	3.7	14.0
21	Basic pharmaceutical products and pharmaceutical preparations	3.07	125.83	123.43	114.90	1.9	7.4
22	Rubber and plastic products	3.82	135.55	128.95	130.59	5.1	-1.3
23	Other non-metallic mineral products	2.17	134.95	145.34	114.19	-7.2	27.3
24	Basic metals	18.67	106.92	109.21	121.93	-2.1	-10.4
25	Fabricated metal products	2.74	169.71	144.50	145.66	17.4	-0.8
26	Computers, electronic and optical products	0.74	148.80	185.63	147.45	-19.8	25.9
27	Electrical equipment	3.80	105.40	101.47	89.14	3.9	13.8
28	Machinery and equipment n. e. c.	1.13	113.84	128.78	125.38	-11.6	2.7
29	Motor vehicles, trailers and semi-trailers	0.29	46.70	39.54	47.79	18.1	-17.3
30	Other transport equipment	0.50	36.64	79.44	54.21	-53.9	46.5
31	Furniture	0.17	165.88	133.56	114.53	24.2	16.6
32	Other manufactured goods	0.21	142.54	150.49	141.60	-5.3	6.3
33	Repair and installation services of machinery and equipment	0.00	-	-	-	-	-
MAIN INDUSTRIAL GROUPINGS							
1	Energy	38.60	146.88	77.03	140.56	90.7	-45.2
2	Intermediate goods	38.39	113.50	112.30	112.23	1.1	0.1
3	Capital goods	3.16	128.93	123.30	128.91	4.6	-4.4
4	Consumer Durables	1.06	85.40	91.94	82.39	-7.1	11.6
5	Consumer Non-Durables	18.79	110.10	119.20	107.99	-7.6	10.4

* Provisional data

Note: The indices and the percentage changes are rounded up to two and one decimal figures, respectively, when published.

(1) The Index is not computed (base year value = 0.)

Table 4. Annual rates of change of the Turnover Index in Industry: Eurozone Countries

Base year: 2010=100.0

Code	Sections and main groupings	February			Rate of change (%)	
		2017*	2016	2015	2017/2016	2016/2015
OVERALL INDEX		120.43	114.19	129.25	5.5	-11.7
INDUSTRIAL SECTIONS						
B	MINING AND QUARRYING	117.20	171.06	147.89	-31.5	15.7
C	MANUFACTURING	120.52	112.62	128.74	7.0	-12.5
MAIN INDUSTRIAL GROUPINGS						
1	Energy	109.32	109.78	277.32	-0.4	-60.4
2	Intermediate goods	127.36	112.27	115.19	13.4	-2.5
3	Capital goods	122.35	138.30	106.92	-11.5	29.3
4	Consumer Durables	97.85	91.58	81.63	6.9	12.2
5	Consumer Non-Durables	115.12	117.61	101.43	-2.1	16.0

* Provisional data

Table 5. Annual rates of change of the Turnover Index in Industry: Non-Eurozone Countries

Base year: 2010=100.0

Code	Sections and main groupings	February			Rate of change (%)	
		2017*	2016	2015	2017/2016	2016/2015
OVERALL INDEX		128.66	93.16	119.26	38.1	-21.9
INDUSTRIAL SECTIONS						
B	MINING AND QUARRYING	112.89	65.97	51.91	71.1	27.1
C	MANUFACTURING	128.97	93.70	120.60	37.6	-22.3
MAIN INDUSTRIAL GROUPINGS						
1	Energy	151.21	73.26	124.80	106.4	-41.3
2	Intermediate goods	103.02	112.33	109.99	-8.3	2.1
3	Capital goods	132.41	115.39	140.51	14.8	-17.9
4	Consumer Durables	66.37	92.48	83.54	-28.2	10.7
5	Consumer Non-Durables	103.20	121.39	117.01	-15.0	3.7

* Provisional data

Note: The indices and the percentage changes are rounded up to two and one decimal figures, respectively, when published.

Table 6. Monthly rate of change of the Turnover Index in Industry: Total Market

Base year: 2010=100.0

Code	Sections and main groupings	February 2017*	January 2017**	Rate of change (%) Feb.2017/Jan.2017
OVERALL INDEX		87.65	82.33	6.5
INDUSTRIAL SECTIONS				
B	MINING AND QUARRYING	87.18	77.86	12.0
C	MANUFACTURING	87.66	82.41	6.4
MAIN INDUSTRIAL GROUPINGS				
1	Energy	103.79	105.44	-1.6
2	Intermediate goods	82.19	71.48	15.0
3	Capital goods	64.62	53.18	21.5
4	Consumer Durables	51.51	31.17	65.2
5	Consumer Non-Durables	80.36	74.64	7.7

Table 7. Monthly rate of change of the Turnover Index in Industry: Domestic Market

Base year: 2010=100.0

Code	Sections and main groupings	February 2017*	January 2017**	Rate of change (%) Feb.2017/Jan.2017
OVERALL INDEX		70.52	65.17	8.2
INDUSTRIAL SECTIONS				
B	MINING AND QUARRYING	68.16	52.50	29.8
C	MANUFACTURING	70.55	65.36	8.0
MAIN INDUSTRIAL GROUPINGS				
1	Energy	80.06	79.04	1.3
2	Intermediate goods	63.61	55.58	14.5
3	Capital goods	47.13	34.21	37.8
4	Consumer Durables	42.40	24.28	74.6
5	Consumer Non-Durables	72.70	67.48	7.7

Table 8. Monthly rate of change of the Turnover Index in Industry: Non-Domestic Market

Base year: 2010=100.0

Code	Sections and main groupings	February 2017*	January 2017**	Rate of change (%) Feb.2017/Jan.2017
OVERALL INDEX		125.93	120.66	4.4
INDUSTRIAL SECTIONS				
B	MINING AND QUARRYING	114.64	114.46	0.2
C	MANUFACTURING	126.18	120.80	4.5
MAIN INDUSTRIAL GROUPINGS				
1	Energy	146.88	153.38	-4.2
2	Intermediate goods	113.50	98.27	15.5
3	Capital goods	128.93	122.91	4.9
4	Consumer Durables	85.40	56.81	50.3
5	Consumer Non-Durables	110.10	102.45	7.5

* Provisional data ** Revised data

Note: The indices and the percentage changes are rounded up to two and one decimal figures, respectively, when published.

Table 9. Monthly rate of change of the Turnover Index in Industry: Eurozone Countries

Base year: 2010=100.0

Code	Sections and main groupings	February 2017*	January 2017**	Rate of change (%) Feb.2017/Jan.2017
OVERALL INDEX		120.43	112.86	6.7
INDUSTRIAL SECTIONS				
B	MINING AND QUARRYING	117.20	107.73	8.8
C	MANUFACTURING	120.52	113.00	6.7
MAIN INDUSTRIAL GROUPINGS				
1	Energy	109.32	127.31	-14.1
2	Intermediate goods	127.36	114.95	10.8
3	Capital goods	122.35	137.38	-10.9
4	Consumer Durables	97.85	66.07	48.1
5	Consumer Non-Durables	115.12	104.67	10.0

* Provisional data **Revised data

Table 10. Monthly rate of change of the Turnover Index in Industry: Non-Eurozone Countries

Base year: 2010=100.0

Code	Sections and main groupings	February 2017*	January 2017**	Rate of change (%) Feb.2017/Jan.2017
OVERALL INDEX		128.66	124.53	3.3
INDUSTRIAL SECTIONS				
B	MINING AND QUARRYING	112.89	119.08	-5.2
C	MANUFACTURING	128.97	124.64	3.5
MAIN INDUSTRIAL GROUPINGS				
1	Energy	151.21	156.39	-3.3
2	Intermediate goods	103.02	85.66	20.3
3	Capital goods	132.41	115.27	14.9
4	Consumer Durables	66.37	42.65	55.6
5	Consumer Non-Durables	103.20	99.38	3.9

* Provisional data ** Revised data

Note: The indices and the percentage changes are rounded up to two and one decimal figures, respectively, when published.

Table 11. Evolution of the Turnover Index in Industry (y-o-y changes): Total Market
Base year: 2010=100.0

Year and month	Overall Index (Total Market)		Turnover Index in Industry for the Domestic Market		Turnover Index in Industry for the Non-Domestic Market		
	Index	Annual rate of change (%)	Index	Annual rate of change (%)	Index	Annual rate of change (%)	
2016	2	72.48	-14.6	60.11	-11.6	100.13	-18.3
	3	85.48	-11.7	69.84	-7.0	120.43	-17.1
	4	86.88	-13.9	76.82	-10.8	109.37	-18.4
	5	87.65	-13.1	72.76	-9.6	120.92	-17.5
	6	89.82	-10.5	78.93	-9.0	114.16	-12.6
	7	92.05	-7.0	77.13	-6.9	125.39	-7.1
	8	84.22	2.0	75.72	8.4	103.22	-6.9
	9	97.88	9.9	78.47	4.5	141.24	17.4
	10	88.64	-2.6	72.34	-5.3	125.05	1.2
	11	88.64	3.4	72.68	4.2	124.30	2.3
	12	102.86	14.7	90.82	20.1	129.77	7.1
	2017	1	82.33	26.7	65.17	20.3	120.66
2*		87.65	20.9	70.52	17.3	125.93	25.8

*Provisional data

Table 12. Evolution of the Turnover Index in Industry (y-o-y changes): Non-Domestic Market
Base year: 2010=100.0

Year and month	Overall Index (Non-Domestic Market)		Turnover Index in Industry for Eurozone Countries		Turnover Index in Industry for Non-Eurozone Countries		
	Index	Annual rate of change (%)	Index	Annual rate of change (%)	Index	Annual rate of change (%)	
2016	2	100.13	-18.3	114.19	-11.7	93.16	-21.9
	3	120.43	-17.1	127.53	-11.1	116.90	-20.0
	4	109.37	-18.4	127.03	1.2	100.62	-27.2
	5	120.92	-17.5	120.55	-12.9	121.11	-19.6
	6	114.16	-12.6	134.85	-0.2	103.90	-19.1
	7	125.39	-7.1	131.07	-15.2	122.58	-2.3
	8	103.22	-6.9	98.87	-18.6	105.38	-0.2
	9	141.24	17.4	134.37	6.7	144.65	23.1
	10	125.05	1.2	115.31	-8.3	129.87	6.0
	11	124.30	2.3	123.38	6.9	124.76	0.2
	12	129.77	7.1	121.94	1.0	133.65	10.2
	2017	1	120.66	35.4	112.86	4.3	124.53
2*		125.93	25.8	120.43	5.5	128.66	38.1

*Provisional data

Note: The indices and the percentage changes are rounded up to two and one decimal figures, respectively, when published.

Table 13. Average indices and rates of change (%) of the 12-month periods of Turnover Index in Industry: Total Market
Base year: 2010=100.0

Code	Division	Average Indices of 12-month periods			Rate of change (%) 2017/2016	Rate of change (%) 2016/2015
		Mar. 2016- Feb. 2017*	Mar. 2015- Feb. 2016	Mar. 2014- Feb. 2015		
	OVERALL INDEX	89.51	89.44	99.82	0.1	-10.4
B	MINING AND QUARRYING	91.61	88.20	91.37	3.9	-3.5
05	Mining of coal and lignite	78.95	133.96	191.05	-41.1	-29.9
06	Extraction of crude petroleum and natural gas	-	-	-	-	-
07	Mining of metal ores	124.03	107.94	120.47	14.9	-10.4
08	Other mining and quarrying products	93.96	88.35	85.13	6.4	3.8
C	MANUFACTURING	89.47	89.46	99.96	0.0	-10.5
10	Food	92.72	95.13	94.55	-2.5	0.6
11	Beverages	82.44	80.76	78.67	2.1	2.7
12	Tobacco products	123.50	125.01	103.30	-1.2	21.0
13	Textiles	68.02	66.64	64.37	2.1	3.5
14	Wearing apparel	49.85	51.88	62.79	-3.9	-17.4
15	Leather and related products	40.42	36.88	39.14	9.6	-5.8
16	Wood and cork	43.18	42.25	42.03	2.2	0.5
17	Paper and paper products	91.45	93.06	91.48	-1.7	1.7
18	Printing and recording services	52.83	53.88	57.35	-1.9	-6.1
19	Coke and refined petroleum products	96.90	96.76	130.59	0.2	-25.9
20	Chemicals and chemical products	94.27	96.65	93.75	-2.5	3.1
21	Basic pharmaceutical products and pharmaceutical preparations	103.11	101.87	93.57	1.2	8.9
22	Rubber and plastic products	100.46	105.13	99.69	-4.5	5.5
23	Other non-metallic mineral products	58.65	56.04	57.66	4.7	-2.8
24	Basic metals	91.26	88.78	90.75	2.8	-2.2
25	Fabricated metal products	81.85	76.16	76.47	7.5	-0.4
26	Computers, electronic and optical products	132.62	138.15	101.10	-4.0	36.7
27	Electrical equipment	79.46	76.85	70.00	3.4	9.8
28	Machinery and equipment n. e. c.	84.79	84.77	84.16	0.0	0.7
29	Motor vehicles, trailers and semi-trailers	81.84	62.71	66.53	30.5	-5.7
30	Other transport equipment	102.74	102.40	34.09	0.3	200.4
31	Furniture	51.07	49.07	47.83	4.1	2.6
32	Other manufactured goods	89.99	85.51	81.38	5.2	5.1
33	Repair and installation services of machinery and equipment	52.42	56.25	69.44	-6.8	-19.0
	MAIN INDUSTRIAL GROUPINGS					
1	Energy	96.52	96.54	130.32	0.0	-25.9
2	Intermediate goods	86.10	85.92	84.99	0.2	1.1
3	Capital goods	74.78	69.20	68.42	8.1	1.1
4	Consumer Durables	59.52	61.37	56.34	-3.0	8.9
5	Consumer Non-Durables	89.02	89.78	87.79	-0.8	2.3

*Provisional data

Note: The indices and the percentage changes are rounded up to two and one decimal figures, respectively, when published.

METHODOLOGICAL NOTES

Generally	The Turnover Index is compiled since January 2006.
Purpose of the index	The purpose of this index is to measure the monthly activity of the industrial sector in terms of value. Turnover comprises the totals invoiced (without VAT) by the observation units during the reference period and corresponds to the market sales of goods or services supplied to third parties. The purposes and the characteristics of the Turnover Index apply, as well, to the indices for the distinction between domestic and non-domestic turnover.
Legal basis	The compilation and publication of the Turnover Index is based on the framework of requirements of Council Regulation (EC) No 1165/98 concerning short-term statistics (STS-R), as well as Regulation (EC) No 1158/05 of the European Parliament and Council amending Council Regulation (EC) No 1165/98. Furthermore, this index is governed by Regulation (EC) No 1893/2006 of the European Parliament and of the Council, by Commission Regulation (EC) No 656/2007 and by Regulation (EC) No 451/2008 of the Council.
Reference period	Month.
Base year	2010=100.0.
Revision	The latest revision of the Turnover Index in Industry (base year 2010=100.0) took place in the framework of Council Regulation (EC) No 1165/98 concerning short-term statistics. In accordance with this regulation the index is revised every five years, in years ending in 0 or 5.
Statistical classifications	At the level of categories of economic activities, the classification of NACE Rev. 2 was used (Regulation No 1893/2006), while at the level of main industrial groups, the allocation of two-digit and three-digit NACE Rev. 2 headings to categories of aggregate classification was used, in accordance with Commission Regulation No 656/2007. At product level, the Eurostat classification CPA 2008 was used, pursuant to Council Regulation No 451/2008.
Geographical coverage	The Index covers the whole Country.
Coverage of economic activities	The Turnover Index in Industry covers the whole country and is compiled for all activities listed in Sections C (mining and quarrying) and D (manufacturing) of the NACE Rev.2 classification.
Computation of the Index	The Turnover Index in Industry is a fixed base index. This index is calculated at a first stage at the four-digit level of economic activity and subsequently, with the implementation of appropriate weighting coefficients, the index is calculated at higher levels (three-level, two-level and one-level of economic activity) or at the level of Main Industrial Groupings (MIGs).
Publication of data	The Turnover Index in Industry (2010=100.0) is released since November 2014 with September 2014 as first reference month. Data with base year 2010=100.0 are available from January 2000 onwards.
References	More information about the methodology concerning the compilation and calculation of the index and for the time series is available on the website of the Hellenic Statistical Authority (ELSTAT) (http://www.statistics.gr/en/home/).