



## PRESS RELEASE

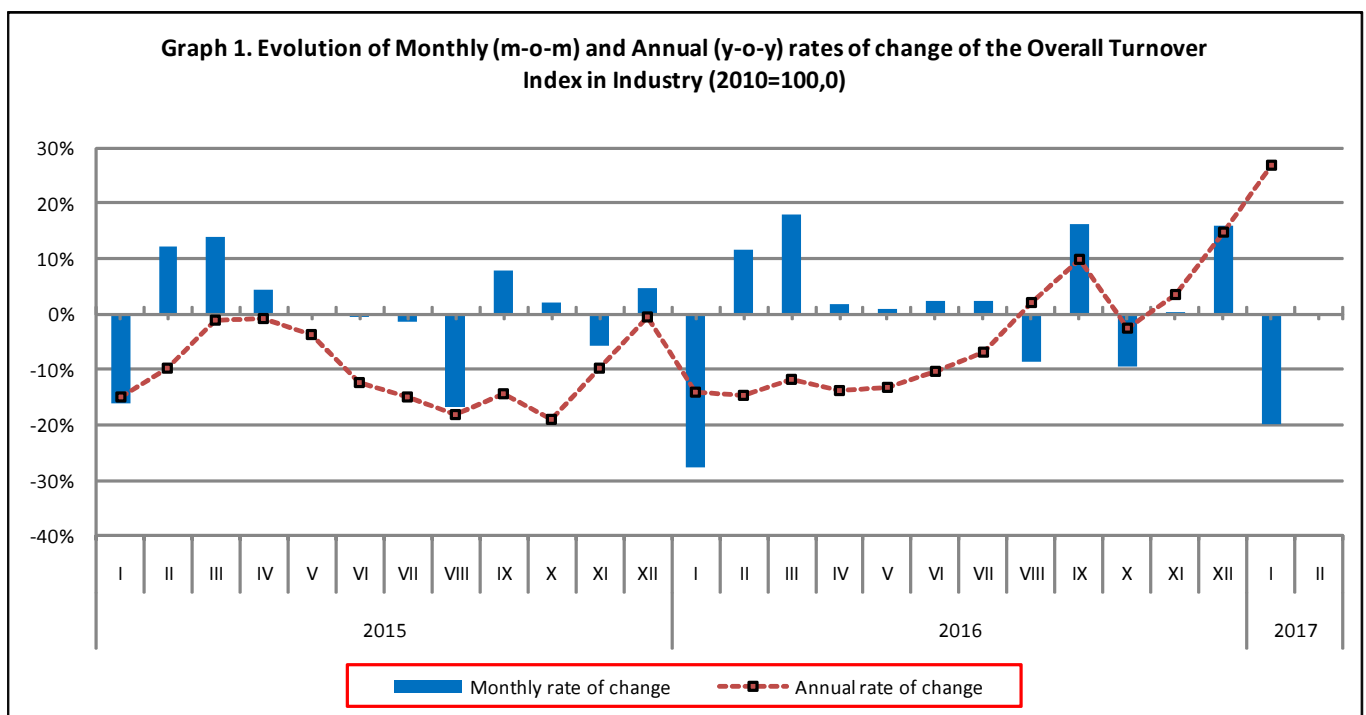
### TURNOVER INDEX IN INDUSTRY: January 2017, y-o-y increase by 26.9%

The evolution of the Turnover Index in Industry with base year 2010=100.0 for January 2017, according to provisional data, is as follows:

The Overall Turnover Index in Industry (both domestic and non-domestic market) in January 2017 compared with the corresponding index of January 2016 recorded an increase of 26.9%. In January 2016 the annual rate of change of the Overall Turnover Index in Industry was -14.2% (Table 1).

The Overall Turnover Index in Industry in January 2017 compared with December 2016 recorded a decrease of 19.8% (Table 6).

The average Overall Turnover Index in Industry for the 12-month period from February 2016 to January 2017, compared with the corresponding index of the 12-month period from February 2015 to January 2016, decreased by 2.5%. In January 2016, the corresponding annual rate of change of the Overall Turnover Index in Industry was -10.1% (Table 13).



#### Information:

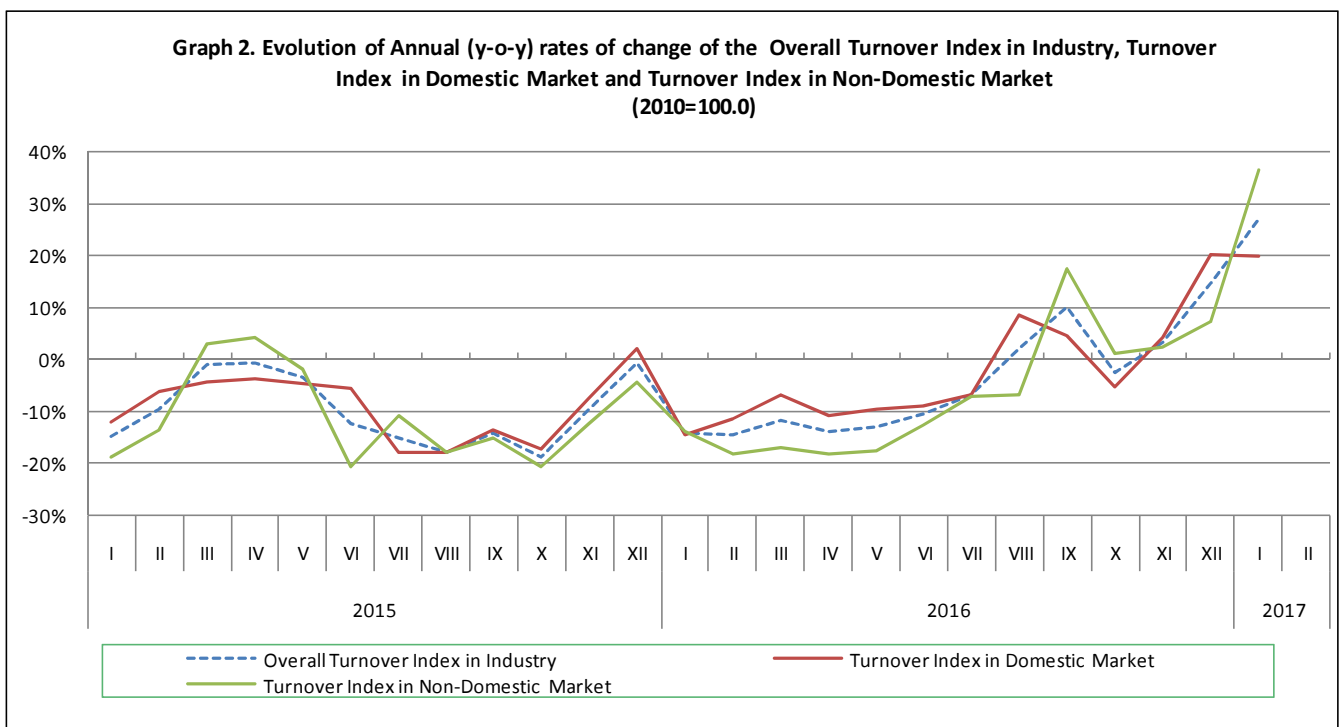
Economic and Short-Term Indices Division  
Production Indices Section  
Diamantaki Aikaterini - Karathanos Panagiotis  
Tel: +30 213 1352122 – 2706 Fax: +30 213 1352738  
[a.diamantaki@statistics.gr](mailto:a.diamantaki@statistics.gr) , [p.karathanos@statistics.gr](mailto:p.karathanos@statistics.gr)

## Comparison of the Overall Turnover Index in Industry in January 2017

### I. Annual comparison of the Overall Turnover Index in Industry (Table 1)

The increase of the Overall Turnover Index in Industry by 26.9% in January 2017, compared with the corresponding index in January 2016, was due to the annual changes as following:

1. By Industrial Sections
  - Mining and quarrying turnover increased by 114.9%.
  - Manufacturing turnover increased by 25.7%.
  
2. By kind of market
  - The Turnover Index in Industry for the domestic market increased by 19.9%.
  - The Turnover Index in Industry for the non-domestic market increased by 36.4%.



### II. Annual comparison of the Turnover Index in Industry in Domestic Market (Table 2)

The increase of the Turnover Index in Industry for the domestic market by 19.9% in January 2017, compared with January 2016, is due to the following annual changes in the industrial sections:

- Mining and quarrying turnover increased by 35.5%.
- Manufacturing turnover increased by 19.7%.

### III. Annual comparison of the Turnover Index in Industry in Non-Domestic Market (Tables 3, 4, 5)

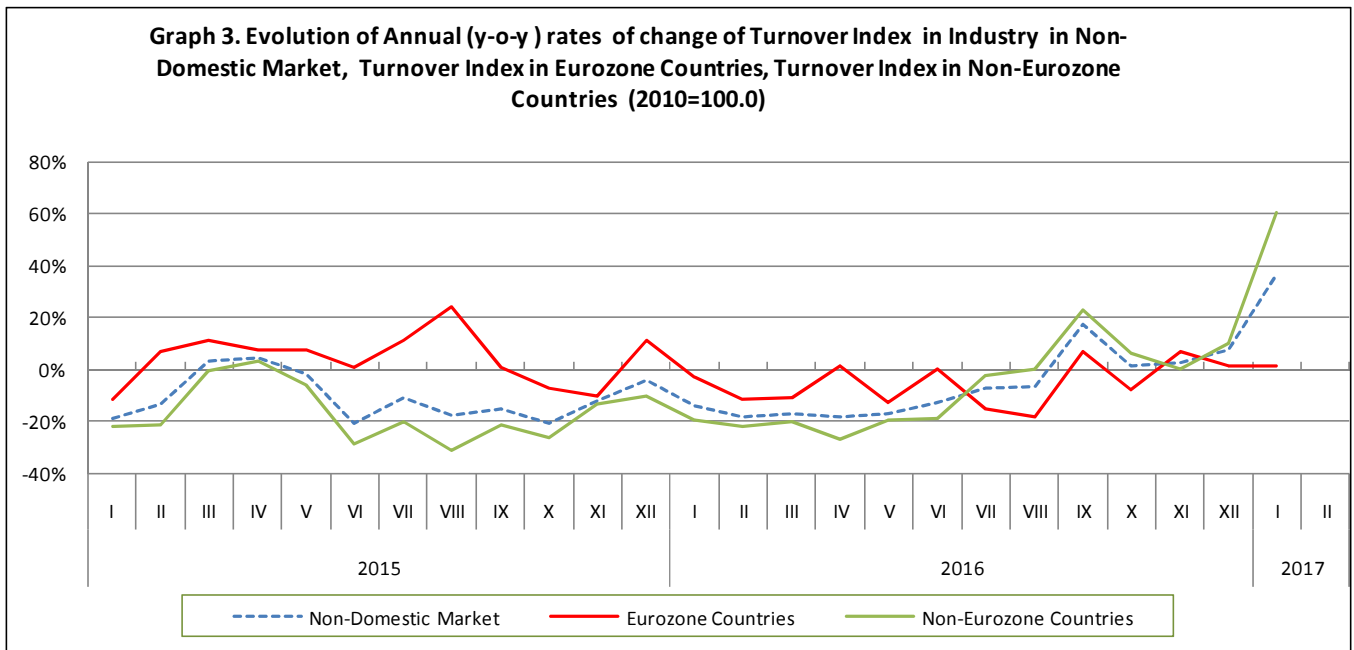
The increase of the Turnover Index in Industry for the Non-Domestic market by 36.4% in January 2017, compared with January 2016, was due to the annual changes as following:

1. By Industrial Sections

- Mining and quarrying turnover increased by 189.3%.
- Manufacturing turnover increased by 33.8%.

2. By kind of market

- The Turnover Index in Industry for the Eurozone countries increased by 1.4%.
- The Turnover Index in Industry for the non-Eurozone countries increased by 60.0%.



**IV. Monthly comparison of the Overall Turnover Index in Industry (Tables 6, 7, 8)**

The decrease of the Overall Turnover Index in Industry by 19.8% in January 2017, compared with the corresponding index in December 2016, was due to the annual changes as following:

1. By Industrial Sections

- Manufacturing turnover decreased by 20.5%.
- Mining and quarrying turnover increased by 19.9%.

2. By kind of market

- The Turnover Index in Industry for the domestic market decreased by 28.5%.
- The Turnover Index in Industry for the non-domestic market decreased by 6.3%.

**Table 1: Annual rates of change of the Turnover Index in Industry (Total Market)**

Base year: 2010=100.0

Branch code	Branch name	Weights	January			Rate of change (%)	
			2017*	2016	2015	2017/2016	2016/2015
<b>OVERALL INDEX</b>			<b>82.45</b>	<b>64.97</b>	<b>75.75</b>	<b>26.9</b>	<b>-14.2</b>
<b>B</b>	<b>MINING AND QUARRYING</b>	<b>100.00</b>	<b>117.17</b>	<b>54.51</b>	<b>71.70</b>	<b>114.9</b>	<b>-24.0</b>
05	Mining of coal and lignite	5.89	67.56	41.60	146.30	62.4	-71.6
06	Extraction of crude petroleum and natural gas	6.90	0.00	0.00	0.00	-	-
07	Mining of metal ores	16.67	128.72	66.84	130.95	92.6	-49.0
08	Other mining and quarrying products	70.54	130.01	58.00	58.52	124.2	-0.9
<b>Г</b>	<b>MANUFACTURING</b>	<b>100.00</b>	<b>81.87</b>	<b>65.15</b>	<b>75.82</b>	<b>25.7</b>	<b>-14.1</b>
10	Food	18.21	82.73	82.34	91.60	0.5	-10.1
11	Beverages	4.57	41.61	42.28	38.95	-1.6	8.5
12	Tobacco products	1.10	117.44	111.82	98.49	5.0	13.5
13	Textiles	1.21	60.50	60.22	62.23	0.5	-3.2
14	Wearing apparel	1.39	40.58	39.40	50.16	3.0	-21.5
15	Leather and related products	0.28	16.37	21.07	19.37	-22.3	8.8
16	Wood and cork	0.72	33.05	29.65	31.29	11.5	-5.2
17	Paper and paper products	2.07	84.31	83.97	85.60	0.4	-1.9
18	Printing and recording services	1.21	35.91	42.47	46.15	-15.4	-8.0
19	Coke and refined petroleum products	33.96	105.81	58.10	79.19	82.1	-26.6
20	Chemicals and chemical products	4.97	73.83	78.53	76.27	-6.0	3.0
21	Basic pharmaceutical products and pharmaceutical preparations	2.64	99.57	90.03	88.03	10.6	2.3
22	Rubber and plastic products	3.26	81.62	87.35	88.20	-6.6	-1.0
23	Other non-metallic mineral products	4.59	38.45	41.02	41.70	-6.3	-1.6
24	Basic metals	9.70	78.05	75.03	88.28	4.0	-15.0
25	Fabricated metal products	3.25	66.08	63.97	62.05	3.3	3.1
26	Computers, electronic and optical products	0.35	108.67	74.78	135.14	45.3	-44.7
27	Electrical equipment	2.43	54.92	49.18	60.33	11.7	-18.5
28	Machinery and equipment n. e. c.	0.88	52.60	33.87	47.21	55.3	-28.3
29	Motor vehicles, trailers and semi-trailers	0.28	76.15	23.15	75.70	228.9	-69.4
30	Other transport equipment	0.43	71.06	88.84	71.21	-20.0	24.8
31	Furniture	0.84	26.33	29.35	26.72	-10.3	9.8
32	Other manufactured goods	0.25	61.36	58.08	62.78	5.6	-7.5
33	Repair and installation services of machinery and equipment	1.41	29.43	35.21	41.58	-16.4	-15.3
<b>MAIN INDUSTRIAL GROUPINGS</b>							
1	Energy	33.61	105.34	57.86	79.11	82.1	-26.9
2	Intermediate goods	31.86	72.16	70.04	74.65	3.0	-6.2
3	Capital goods	4.57	53.32	42.10	56.74	26.7	-25.8
4	Consumer Durables	1.53	31.84	33.35	36.57	-4.5	-8.8
5	Consumer Non-Durables	28.43	74.35	73.06	78.16	1.8	-6.5

\* Provisional data

Note: The indices are rounded up to two decimal figures when published and percentage changes are rounded up to one decimal figure when published.

**Table 2: Annual rates of change of the Turnover Index in Industry for the Domestic Market**

Base year: 2010=100.0

Branch code	Branch name	Weights	January			Rate of change (%)	
			2017*	2016	2015	2017/2016	2016/2015
<b>OVERALL INDEX</b>			<b>64.95</b>	<b>54.17</b>	<b>63.36</b>	<b>19.9</b>	<b>-14.5</b>
<b>B</b>	<b>MINING AND QUARRYING</b>	<b>100.00</b>	<b>60.47</b>	<b>44.63</b>	<b>57.23</b>	<b>35.5</b>	<b>-22.0</b>
05	Mining of coal and lignite	9.91	68.04	41.89	147.34	62.4	-71.6
06	Extraction of crude petroleum and natural gas	11.69	0.00	0.00	0.00	-	-
07	Mining of metal ores	10.57	82.32	111.35	118.10	-26.1	-5.7
08	Other mining and quarrying products	67.83	66.36	42.33	44.51	56.8	-4.9
<b>Г</b>	<b>MANUFACTURING</b>	<b>100.00</b>	<b>65.01</b>	<b>54.30</b>	<b>63.45</b>	<b>19.7</b>	<b>-14.4</b>
10	Food	22.06	77.80	76.70	87.40	1.4	-12.3
11	Beverages	6.16	39.60	41.13	37.23	-3.7	10.5
12	Tobacco products	0.97	76.03	77.29	77.98	-1.6	-0.9
13	Textiles	0.89	48.46	43.36	43.33	11.8	0.1
14	Wearing apparel	1.02	40.06	42.78	39.18	-6.4	9.2
15	Leather and related products	0.34	14.73	19.24	17.24	-23.4	11.6
16	Wood and cork	0.89	29.40	25.17	26.91	16.8	-6.5
17	Paper and paper products	2.65	78.99	79.09	81.57	-0.1	-3.0
18	Printing and recording services	1.72	35.28	41.98	45.37	-16.0	-7.5
19	Coke and refined petroleum products	31.51	79.36	46.03	64.92	72.4	-29.1
20	Chemicals and chemical products	4.60	71.09	79.39	71.69	-10.5	10.7
21	Basic pharmaceutical products and pharmaceutical preparations	2.45	88.35	85.08	86.64	3.9	-1.8
22	Rubber and plastic products	3.01	69.53	68.45	72.79	1.6	-6.0
23	Other non-metallic mineral products	5.66	27.49	27.92	32.09	-1.5	-13.0
24	Basic metals	5.72	58.40	51.01	54.58	14.5	-6.5
25	Fabricated metal products	3.47	31.29	35.00	34.29	-10.6	2.1
26	Computers, electronic and optical products	0.17	14.26	10.58	36.39	34.7	-70.9
27	Electrical equipment	1.82	33.67	31.17	45.73	8.0	-31.8
28	Machinery and equipment n. e. c.	0.77	26.77	18.46	30.16	45.0	-38.8
29	Motor vehicles, trailers and semi-trailers	0.27	94.05	14.79	88.50	536.0	-83.3
30	Other transport equipment	0.40	67.70	76.11	73.34	-11.1	3.8
31	Furniture	1.15	20.89	23.07	23.97	-9.5	-3.8
32	Other manufactured goods	0.27	38.19	37.26	43.20	2.5	-13.8
33	Repair and installation services of machinery and equipment	2.03	29.43	35.21	41.58	-16.4	-15.3
<b>MAIN INDUSTRIAL GROUPINGS</b>							
1	Energy	31.37	78.89	45.77	64.95	72.4	-29.5
2	Intermediate goods	28.94	55.49	55.43	58.04	0.1	-4.5
3	Capital goods	5.20	34.46	30.47	38.94	13.1	-21.8
4	Consumer Durables	1.74	25.21	26.03	27.80	-3.2	-6.4
5	Consumer Non-Durables	32.75	66.91	66.35	72.31	0.9	-8.3

\* Provisional data

Note: The indices are rounded up to two decimal figures when published and percentage changes are rounded up to one decimal figure when published.

**Table 3: Annual rates of change of the Turnover Index in Industry for the Non - Domestic Market**

Base year: 2010=100.0

Branch code	Branch name	Weights	January			Rate of change (%)	
			2017*	2016	2015	2017/2016	2016/2015
<b>OVERALL INDEX</b>			<b>121.56</b>	<b>89.11</b>	<b>103.42</b>	<b>36.4</b>	<b>-13.8</b>
<b>B</b>	<b>MINING AND QUARRYING</b>	<b>100.00</b>	<b>199.00</b>	<b>68.78</b>	<b>92.58</b>	<b>189.3</b>	<b>-25.7</b>
05	Mining of coal and lignite	0.10	0.00	0.00	0.00	-	-
06	Extraction of crude petroleum and natural gas <sup>(2)</sup>	0.00	-	-	-	-	-
07	Mining of metal ores	25.44	156.47	40.24	138.64	288.9	-71.0
08	Other mining and quarrying products	74.46	213.81	78.63	76.97	171.9	2.2
<b>Г</b>	<b>MANUFACTURING</b>	<b>100.00</b>	<b>119.83</b>	<b>89.56</b>	<b>103.67</b>	<b>33.8</b>	<b>-13.6</b>
10	Food	9.54	108.27	111.55	113.38	-2.9	-1.6
11	Beverages	0.98	70.27	58.57	63.57	20.0	-7.9
12	Tobacco products	1.38	182.78	166.31	130.84	9.9	27.1
13	Textiles	1.93	72.96	77.65	81.76	-6.0	-5.0
14	Wearing apparel	2.21	41.12	35.88	61.58	14.6	-41.7
15	Leather and related products	0.15	24.49	30.15	29.93	-18.8	0.7
16	Wood and cork	0.37	52.45	53.47	54.56	-1.9	-2.0
17	Paper and paper products	0.77	125.72	122.05	117.01	3.0	4.3
18	Printing and recording services	0.07	69.64	68.13	87.30	2.2	-22.0
19	Coke and refined petroleum products	39.47	153.39	79.80	104.85	92.2	-23.9
20	Chemicals and chemical products	5.82	78.72	77.00	84.43	2.2	-8.8
21	Basic pharmaceutical products and pharmaceutical preparations	3.07	119.65	98.90	90.54	21.0	9.2
22	Rubber and plastic products	3.82	103.13	120.97	115.61	-14.8	4.6
23	Other non-metallic mineral products	2.17	102.98	118.09	98.28	-12.8	20.2
24	Basic metals	18.67	91.62	91.60	111.55	0.0	-17.9
25	Fabricated metal products	2.74	165.57	146.83	141.46	12.8	3.8
26	Computers, electronic and optical products	0.74	158.77	108.84	187.55	45.9	-42.0
27	Electrical equipment	3.80	77.79	68.56	76.04	13.5	-9.8
28	Machinery and equipment n. e. c.	1.13	92.24	57.53	73.37	60.3	-21.6
29	Motor vehicles, trailers and semi-trailers	0.29	39.04	40.49	49.16	-3.6	-17.6
30	Other transport equipment	0.50	77.12	111.78	67.36	-31.0	66.0
31	Furniture	0.17	111.79	127.98	69.95	-12.7	83.0
32	Other manufactured goods	0.21	126.90	116.99	118.17	8.5	-1.0
33	Repair and installation services of machinery and equipment	0.00	-	-	-	-	-
<b>MAIN INDUSTRIAL GROUPINGS</b>							
1	Energy	38.60	153.38	79.80	104.84	92.2	-23.9
2	Intermediate goods	38.39	100.25	94.68	102.64	5.9	-7.8
3	Capital goods	3.16	122.65	84.84	122.15	44.6	-30.6
4	Consumer Durables	1.06	56.50	60.57	69.18	-6.7	-12.5
5	Consumer Non-Durables	18.79	103.24	99.13	100.88	4.2	-1.7

\* Provisional data

**Notes:**

1. The indices are rounded up to two decimal figures when published and percentage changes are rounded up to one decimal figure when published.
2. The Index is not computed (base year value = 0)

**Table 4: Annual rates of change of the Turnover Index in Industry for the Eurozone Countries**

Base year: 2010=100.0

Branch code	Branch name	January			Rate of change (%)	
		2017*	2016	2015	2017/2016	2016/2015
<b>OVERALL INDEX</b>		<b>109.77</b>	<b>108.26</b>	<b>111.45</b>	<b>1.4</b>	<b>-2.9</b>
<b>INDUSTRIAL SECTIONS</b>						
B	MINING AND QUARRYING	107.81	88.20	115.12	22.2	-23.4
C	MANUFACTURING	109.83	108.81	111.35	0.9	-2.3
<b>MAIN INDUSTRIAL GROUPINGS</b>						
1	Energy	127.31	149.83	139.26	-15.0	7.6
2	Intermediate goods	110.63	103.47	113.55	6.9	-8.9
3	Capital goods	137.76	116.57	88.29	18.2	32.0
4	Consumer Durables	65.87	77.73	91.70	-15.3	-15.2
5	Consumer Non-Durables	101.81	101.24	101.57	0.6	-0.3

\* Provisional data

**Table 5: Annual rates of change of the Turnover Index in Industry for the Non - Eurozone Countries**

Base year: 2010=100.0

Branch code	Branch name	January			Rate of change (%)	
		2017*	2016	2015	2017/2016	2016/2015
<b>OVERALL INDEX</b>		<b>127.40</b>	<b>79.62</b>	<b>99.45</b>	<b>60.0</b>	<b>-19.9</b>
<b>INDUSTRIAL SECTIONS</b>						
B	MINING AND QUARRYING	261.65	55.44	77.10	371.9	-28.1
C	MANUFACTURING	124.74	80.09	99.89	55.8	-19.8
<b>MAIN INDUSTRIAL GROUPINGS</b>						
1	Energy	156.39	71.72	100.87	118.0	-28.9
2	Intermediate goods	92.39	88.03	94.40	5.0	-6.8
3	Capital goods	114.67	68.09	140.03	68.4	-51.4
4	Consumer Durables	42.18	34.33	34.74	22.9	-1.2
5	Consumer Non-Durables	105.21	96.23	99.93	9.3	-3.7

\* Provisional data

Note: The indices are rounded up to two decimal figures when published and percentage changes are rounded up to one decimal figure when published.

**Table 6: Monthly rate of change of the Turnover Index in Industry (Total Market)**

Base year: 2010=100.0

Branch code	Branch name	January 2017*	December 2016**	Rate of change (%) Jan.17/Dec.16
<b>OVERALL INDEX</b>		<b>82.45</b>	<b>102.86</b>	<b>-19.8</b>
<b>INDUSTRIAL SECTIONS</b>				
B	MINING AND QUARRYING	117.17	97.73	19.9
C	MANUFACTURING	81.87	102.95	-20.5
<b>MAIN INDUSTRIAL GROUPINGS</b>				
1	Energy	105.34	124.98	-15.7
2	Intermediate goods	72.16	96.24	-25.0
3	Capital goods	53.32	118.39	-55.0
4	Consumer Durables	31.84	81.57	-61.0
5	Consumer Non-Durables	74.35	82.80	-10.2

**Table 7: Monthly rate of change of the Turnover Index in Industry for the Domestic Market**

Base year: 2010=100.0

Branch code	Branch name	January 2017*	December 2016**	Rate of change (%) Jan.17/Dec.16
<b>OVERALL INDEX</b>		<b>64.95</b>	<b>90.82</b>	<b>-28.5</b>
<b>INDUSTRIAL SECTIONS</b>				
B	MINING AND QUARRYING	60.47	66.56	-9.2
C	MANUFACTURING	65.01	91.16	-28.7
<b>MAIN INDUSTRIAL GROUPINGS</b>				
1	Energy	78.89	113.50	-30.5
2	Intermediate goods	55.49	89.39	-37.9
3	Capital goods	34.46	91.58	-62.4
4	Consumer Durables	25.21	62.39	-59.6
5	Consumer Non-Durables	66.91	71.76	-6.8

**Table 8: Monthly rate of change of the Turnover Index in Industry for the Non - Domestic Market**

Base year: 2010=100.0

Branch code	Branch name	January 2017*	December 2016**	Rate of change (%) Jan.17/Dec.16
<b>OVERALL INDEX</b>		<b>121.56</b>	<b>129.77</b>	<b>-6.3</b>
<b>INDUSTRIAL SECTIONS</b>				
B	MINING AND QUARRYING	199.00	142.70	39.5
C	MANUFACTURING	119.83	129.48	-7.5
<b>MAIN INDUSTRIAL GROUPINGS</b>				
1	Energy	153.38	145.84	5.2
2	Intermediate goods	100.25	107.79	-7.0
3	Capital goods	122.65	216.98	-43.5
4	Consumer Durables	56.50	152.84	-63.0
5	Consumer Non-Durables	103.24	125.70	-17.9

\* Provisional data \*\* Revised data

Note: The indices are rounded up to two decimal figures when published and percentage changes are rounded up to one decimal figure when published.



**Table 9: Monthly rate of change of the Turnover Index in Industry for the Eurozone Countries**

Base year: 2010=100.0

Branch code	Branch name	January 2017*	December 2016**	Rate of change (%) Jan.17/Dec.16
<b>OVERALL INDEX</b>		<b>109.77</b>	<b>121.94</b>	<b>-10.0</b>
<b>INDUSTRIAL SECTIONS</b>				
B	MINING AND QUARRYING	107.81	160.97	-33.0
C	MANUFACTURING	109.83	120.86	-9.1
<b>MAIN INDUSTRIAL GROUPINGS</b>				
1	Energy	127.31	142.95	-10.9
2	Intermediate goods	110.63	114.99	-3.8
3	Capital goods	137.76	180.09	-23.5
4	Consumer Durables	65.87	125.85	-47.7
5	Consumer Non-Durables	101.81	118.72	-14.2

\* Provisional data    \*\*Revised data

**Table 10: Monthly rate of change of the Turnover Index in Industry for the Non - Eurozone Countries**

Base year: 2010=100.0

Branch code	Branch name	January 2017*	December 2016**	Rate of change (%) Jan.17/Dec.16
<b>OVERALL INDEX</b>		<b>127.40</b>	<b>133.65</b>	<b>-4.7</b>
<b>INDUSTRIAL SECTIONS</b>				
B	MINING AND QUARRYING	261.65	130.15	101.0
C	MANUFACTURING	124.74	133.72	-6.7
<b>MAIN INDUSTRIAL GROUPINGS</b>				
1	Energy	156.39	146.17	7.0
2	Intermediate goods	92.39	102.35	-9.7
3	Capital goods	114.67	236.45	-51.5
4	Consumer Durables	42.18	194.11	-78.3
5	Consumer Non-Durables	105.21	135.28	-22.2

\* Provisional data    \*\* Revised data

Note: The indices are rounded up to two decimal figures when published and percentage changes are rounded up to one decimal figure when published.

**Table 11: Evolution of the Turnover Index in Industry (Total Market) - y-o-y changes**

Base year: 2010=100.0

Year-month	Overall Index (Total Market)		Turnover Index in Industry for the Domestic Market		Turnover Index in Industry for the Non - Domestic Market		
	Index	Annual rate of change (%)	Index	Annual rate of change (%)	Index	Annual rate of change (%)	
2016	I	64.97	-14.2	54.17	-14.5	89.11	-13.8
	II	72.48	-14.6	60.11	-11.6	100.13	-18.3
	III	85.48	-11.7	69.84	-7.0	120.43	-17.1
	IV	86.88	-13.9	76.82	-10.8	109.37	-18.4
	V	87.65	-13.1	72.76	-9.6	120.92	-17.5
	VI	89.82	-10.5	78.93	-9.0	114.16	-12.6
	VII	92.05	-7.0	77.13	-6.9	125.39	-7.1
	VIII	84.22	2.0	75.72	8.4	103.22	-6.9
	XI	97.88	9.9	78.47	4.5	141.24	17.4
	X	88.64	-2.6	72.34	-5.3	125.05	1.2
	XI	88.64	3.4	72.68	4.2	124.30	2.3
	XII	102.86	14.7	90.82	20.1	129.77	7.1
2017	I*	82.45	26.9	64.95	19.9	121.56	36.4

\*Provisional data

**Table 12: Evolution of the Turnover Index in Industry for the Non – Domestic Market - y-o-y changes**

Base year: 2010=100.0

Year-month	Overall Index (Non - Domestic Market)		Turnover Index in Industry for Eurozone Countries		Turnover Index in Industry for Non - Eurozone Countries		
	Index	Annual rate of change (%)	Index	Annual rate of change (%)	Index	Annual rate of change (%)	
2016	I	89.11	-13.8	108.26	-2.9	79.62	-19.9
	II	100.13	-18.3	114.19	-11.7	93.16	-21.9
	III	120.43	-17.1	127.53	-11.1	116.90	-20.0
	IV	109.37	-18.4	127.03	1.2	100.62	-27.2
	V	120.92	-17.5	120.55	-12.9	121.11	-19.6
	VI	114.16	-12.6	134.85	-0.2	103.90	-19.1
	VII	125.39	-7.1	131.07	-15.2	122.58	-2.3
	VIII	103.22	-6.9	98.87	-18.6	105.38	-0.2
	XI	141.24	17.4	134.37	6.7	144.65	23.1
	X	125.05	1.2	115.31	-8.3	129.87	6.0
	XI	124.30	2.3	123.38	6.9	124.76	0.2
	XII	129.77	7.1	121.94	1.0	133.65	10.2
2017	I*	121.56	36.4	109.77	1.4	127.40	60.0

\*Provisional data

Note: The indices are rounded up to two decimal figures when published and percentage changes are rounded up to one decimal figure when published.

**Table 13: Average indices and rates of change (%) of the 12-month periods of Turnover Index in Industry (Total Market)**

Base year: 2010=100.0

Branch code	Branch name	Average Indices of 12-month periods			Rate of change (%) 2017/2016	Rate of change (%) 2016/2015
		Feb. 2016- Jan. 2017*	Feb. 2015- Jan. 2016	Feb. 2014- Jan. 2015		
<b>OVERALL INDEX</b>		<b>88.25</b>	<b>90.48</b>	<b>100.58</b>	<b>-2.5</b>	<b>-10.1</b>
<b>B</b>	<b>MINING AND QUARRYING</b>	<b>94.19</b>	<b>87.97</b>	<b>91.95</b>	<b>7.1</b>	<b>-4.3</b>
05	Mining of coal and lignite	67.70	147.58	188.24	-54.1	-21.6
06	Extraction of crude petroleum and natural gas	-	-	-	-	-
07	Mining of metal ores	126.51	107.98	120.75	17.2	-10.6
08	Other mining and quarrying products	97.97	86.88	86.11	12.8	0.9
<b>C</b>	<b>MANUFACTURING</b>	<b>88.15</b>	<b>90.52</b>	<b>100.73</b>	<b>-2.6</b>	<b>-10.1</b>
10	Food	92.60	95.21	94.88	-2.7	0.4
11	Beverages	82.21	80.71	78.93	1.9	2.3
12	Tobacco products	125.82	123.80	101.50	1.6	22.0
13	Textiles	68.40	66.09	64.82	3.5	2.0
14	Wearing apparel	50.12	51.63	63.59	-2.9	-18.8
15	Leather and related products	40.15	36.97	38.85	8.6	-4.8
16	Wood and cork	43.43	42.05	41.97	3.3	0.2
17	Paper and paper products	91.81	92.83	91.43	-1.1	1.5
18	Printing and recording services	53.23	53.78	57.84	-1.0	-7.0
19	Coke and refined petroleum products	93.12	100.07	132.78	-6.9	-24.6
20	Chemicals and chemical products	94.45	95.72	93.99	-1.3	1.8
21	Basic pharmaceutical products and pharmaceutical preparations	103.73	100.81	94.18	2.9	7.1
22	Rubber and plastic products	100.19	104.90	100.01	-4.5	4.9
23	Other non-metallic mineral products	58.80	55.25	57.83	6.4	-4.5
24	Basic metals	90.91	89.56	89.78	1.5	-0.3
25	Fabricated metal products	80.89	76.21	76.53	6.2	-0.4
26	Computers, electronic and optical products	131.07	136.01	103.99	-3.6	30.8
27	Electrical equipment	79.55	76.26	69.65	4.3	9.5
28	Machinery and equipment n. e. c.	85.18	85.19	83.17	0.0	2.4
29	Motor vehicles, trailers and semi-trailers	76.53	66.29	66.40	15.4	-0.2
30	Other transport equipment	104.46	101.34	29.94	3.1	238.5
31	Furniture	51.38	49.06	48.34	4.7	1.5
32	Other manufactured goods	90.60	84.91	81.69	6.7	3.9
33	Repair and installation services of machinery and equipment	51.88	56.58	70.44	-8.3	-19.7
<b>MAIN INDUSTRIAL GROUPINGS</b>						
1	Energy	92.73	99.87	132.49	-7.1	-24.6
2	Intermediate goods	86.17	85.77	84.91	0.5	1.0
3	Capital goods	74.03	69.64	68.19	6.3	2.1
4	Consumer Durables	59.29	61.25	57.44	-3.2	6.6
5	Consumer Non-Durables	89.15	89.59	87.97	-0.5	1.8

\*Provisional data

Note: The indices are rounded up to two decimal figures when published and percentage changes are rounded up to one decimal figure when published.

## METHODOLOGICAL NOTES

<b>Generally</b>	The Turnover Index is being compiled since January 2006.
<b>Purpose of the index</b>	The purpose of this index is to measure the monthly activity of the industrial sector in terms of value. Turnover comprises the totals invoiced (without VAT) by the observation units during the reference period and corresponds to the market sales of goods or services supplied to third parties. The purposes and the characteristics of the Turnover Index apply, as well, to the indices for the distinction between domestic and non-domestic turnover.
<b>Legal basis</b>	The compilation and publication of the Turnover Index is based on the framework of requirements of the Council Regulation (EC) No 1165/98 concerning short-term statistics (STS-R), as well as the amendment Regulation (EC) No 1158/05 of the European Parliament and Council, amending the Council Regulation (EC) No 1165/98. Furthermore, this index is governed by the Regulation (EC) No.1893/2006 of the European Parliament and of the Council, by the Commission Regulation (EC) No.656/2007 and by the Regulation (EC) No.451/2008 of the Council.
<b>Reference period</b>	Month
<b>Base year</b>	2010=100.0.
<b>Revision</b>	The last revision of the Turnover Index in Industry with base year 2010=100.0 has been done in the framework of the Short – Term Statistics (STS) Council Regulation (EC) No 1165/98 concerning short-term statistics. According to this regulation the index in question is revised every five years, in years ending in 0 or 5.
<b>Statistical classifications</b>	At the level of categories of economic activities, the classification of NACE Rev. 2 was used (Regulation 1893/2006), while at the level of main industrial groups, the allocation of two-digit and three-digit NACE Rev. 2 headings to categories of aggregate classification was used, in accordance with the Commission Regulation 656/2007. At product level, the Eurostat classification CPA 2008 was used, according to the Council Regulation 451/2008.
<b>Geographical coverage</b>	The Index covers the whole country.
<b>Coverage of economic activities</b>	The Turnover Index in Industry covers the whole country and is compiled for all activities listed in Sections C (mining and quarrying) and D (manufacturing) of the NACE Rev.2 classification.
<b>Computation of the Index</b>	The Turnover Index in Industry is a fixed base index. This index is calculated initially at the four-digit level of economic activity and subsequently, with the implementation of appropriate weighting coefficients, the index is calculated at higher levels (three-level, two-level and one-level of economic activity) or at the level of Main Industrial Groupings (MIGs).
<b>Publication of data</b>	The Turnover Index with base year 2010=100.0 is being released since November 2014 with September 2014 as first reference month. Data with base year 2010=100.0 are available from January 2000 onwards.
<b>References</b>	More information about the methodology concerning the compilation and calculation of the index and for the time series is available on the Hellenic Statistical Authority (ELSTAT) website ( <a href="http://www.statistics.gr">www.statistics.gr</a> ).