



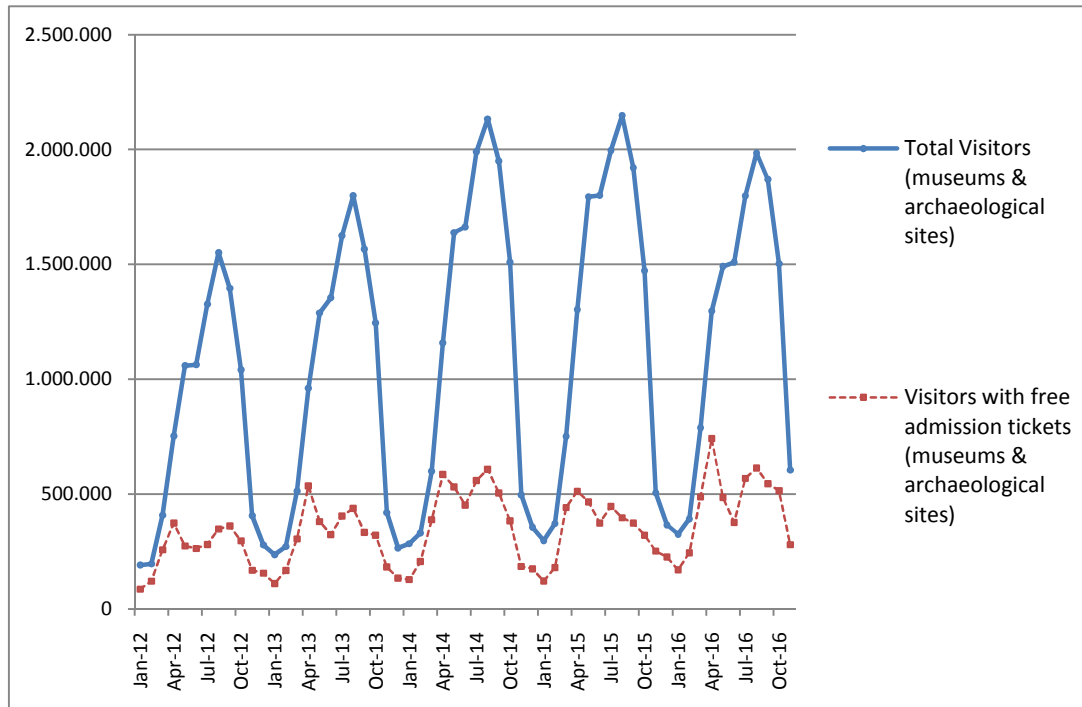
## PRESS RELEASE

### SURVEY ON MUSEUMS AND ARCHAEOLOGICAL SITES ATTENDANCE NOVEMBER 2016

The Hellenic Statistical Authority (ELSTAT) announces the results of the *Survey on Museums and Archaeological Sites Attendance* for November 2016. More specifically:

- In November 2016 compared with the corresponding month of 2015, Museums experienced a 19.5% increase in the number of visitors and a 19.8% increase in the number of free admission visitors as well as a 13.6% increase in their receipts (Table 1).
- In November 2016 compared with the corresponding month of 2015, the number of visitors at Archaeological sites recorded a increase of 19.7%, while an increase of 3.9% was observed in the number of free admission visitors and an 37.1% increase in the corresponding receipts (Table 1).
- During the eleven-month period from January to November 2016, a increase of 0.3% was observed in the number of visitors of Museums, while an increase of 35.4% was recorded in the number of free admission visitors and a 8% increase in the relevant receipts, in comparison with the corresponding period of 2015 (Table 2).
- As regards Archaeological sites, during the eleven-month period from January to November 2016, a decrease of 8% was recorded in the number of visitors, while a 22.3% increase was observed in the number of free admission visitors and a 67.1% increase in the relevant receipts, in comparison with the corresponding period of 2015 (Table 2).

**Graph 1: Visitors of Museums and Archaeological sites (Jan 2012 – Nov 2016)**



**Information:**

Social Statistics Division

Section of Culture and Sports statistics,

Argyro Pateraki (Tel: +30 213 1352129, e-mail: [ar.pateraki@statistics.gr](mailto:ar.pateraki@statistics.gr))

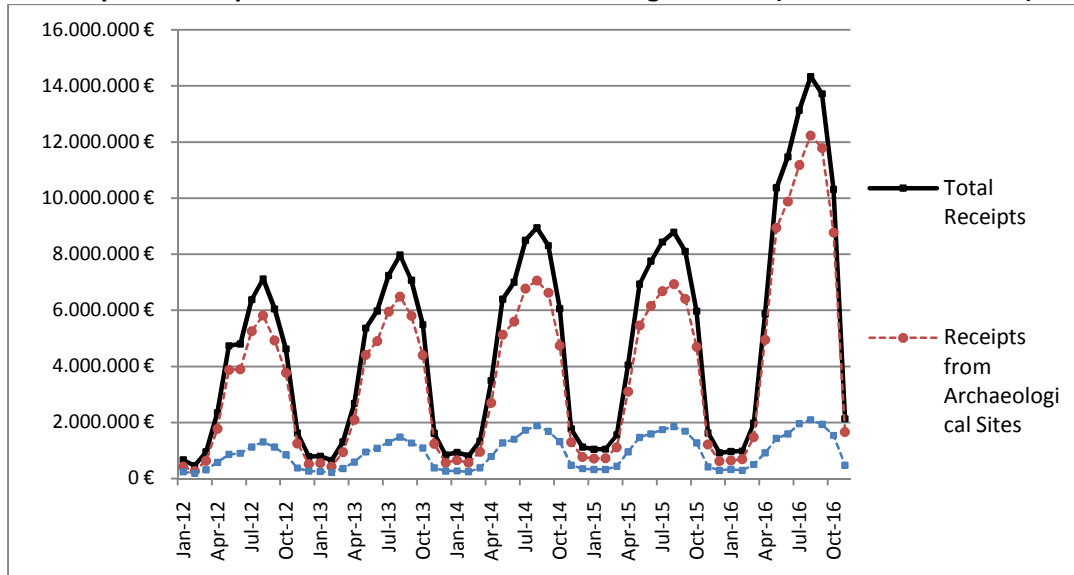
**TABLE 1: VISITORS OF MUSEUMS AND ARCHAEOLOGICAL SITES - TOTAL RECEIPTS  
(NOVEMBER 2015 & NOVEMBER 2016)**

<b>I. VISITORS</b>			
<b>Museums and Archaeological sites</b>	<b>2015</b>	<b>2016</b>	<b>Change 2016/2015</b>
<b>Total number of visitors (A+B)</b>	<b>505,213</b>	<b>604,239</b>	<b>19.6%</b>
<b>A. Museums (C+E)</b>	<b>210,203</b>	<b>251,141</b>	<b>19.5%</b>
Acropolis Museum	81,644	82,676	1.3%
National Archaeological	24,314	30,747	26.5%
Ancient Olympia	3,872	4,791	23.7%
Palace of the Grand Master (Rhodes)	4,012	6,856	70.9%
Herakleion Archaeological (Crete)	3,846	5,625	46.3%
Rhodes	1,476	1,888	27.9%
Delphi	5,907	6,666	12.8%
Other museums	85,132	111,892	31.4%
<b>B. Archaeological Sites (D+F)</b>	<b>295,010</b>	<b>353,098</b>	<b>19.7%</b>
Epidavros <sup>(1)</sup>	7,788	11,098	42.5%
The Acropolis of Mycenae & Atreus' Treasure	8,590	11,119	29.4%
The Acropolis of Athens	83,978	96,299	14.7%
Sounio	9,376	10,208	8.9%
The Acropolis of Lindos	3,696	2,944	-20.3%
Kameiros (Rhodes)	625	450	-28.0%
Ancient Olympia	17,117	15,081	-11.9%
Knossos (Crete)	9,222	9,520	3.2%
Phaistos (Crete)	1,145	979	-14.5%
Ancient Korinthos <sup>(1)</sup>	4,488	6,164	37.3%
Mystras <sup>(1)</sup>	2,605	3,093	18.7%
Delphi	8,530	9,987	17.1%
Other archaeological sites	137,850	176,156	27.8%
<b>II. VISITORS WHO PAID TICKET</b>			
	<b>2015</b>	<b>2016</b>	<b>Change 2016/2015</b>
<b>Total number of visitors who paid ticket (C+D)</b>	<b>253,539</b>	<b>324,716</b>	<b>28.1%</b>
C. Museums	96,457	114,887	19.1%
D. Archaeological sites	157,082	209,829	33.6%
<b>III. VISITORS WITH FREE ADMISSION TICKETS</b>			
	<b>2015</b>	<b>2016</b>	<b>Change 2016/2015</b>
<b>Total number of visitors with free admission ticket (E+F)</b>	<b>251,674</b>	<b>279,523</b>	<b>11.1%</b>
E. Museums	113,746	136,254	19.8%
F. Archaeological sites	137,928	143,269	3.9%
<b>IV. RECEIPTS (euros)</b>			
	<b>2015</b>	<b>2016</b>	<b>Change 2016/2015</b>
<b>Total Receipts (G+H)</b>	<b>1,628,664.00</b>	<b>2,134,319.00</b>	<b>31.0%</b>
G. Museums	418,564.00	475,671.00	13.6%
H. Archaeological sites	1,210,100.00	1,658,648.00	37.1%

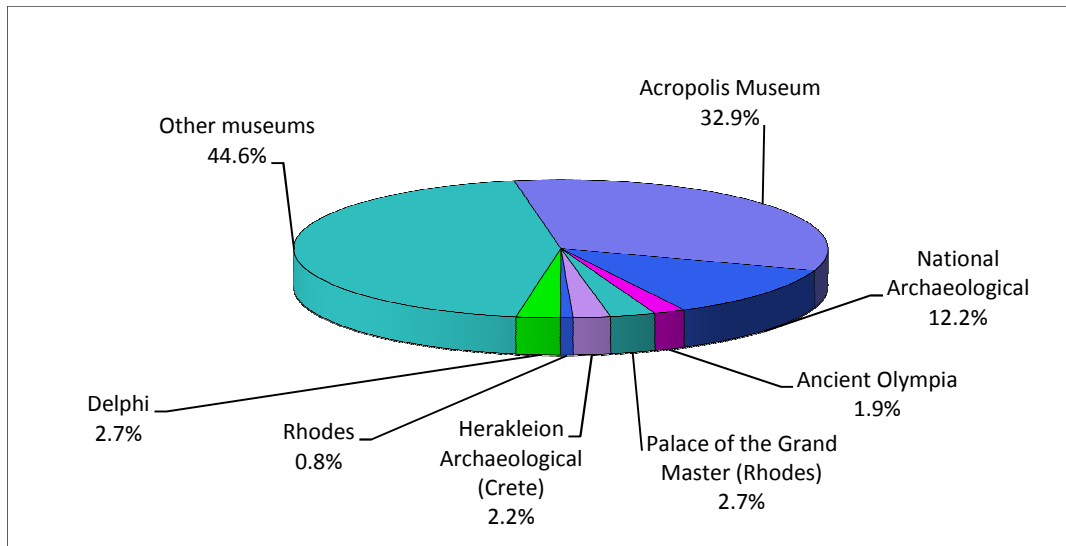
<sup>(1)</sup> Flat rate ticket, valid both for the museum and the archaeological site.

The following graphs depict the evolution of the receipts (Graph 2), as well as the number of visitors by Museum and Archaeological Site (Graphs 3 and 4, respectively).

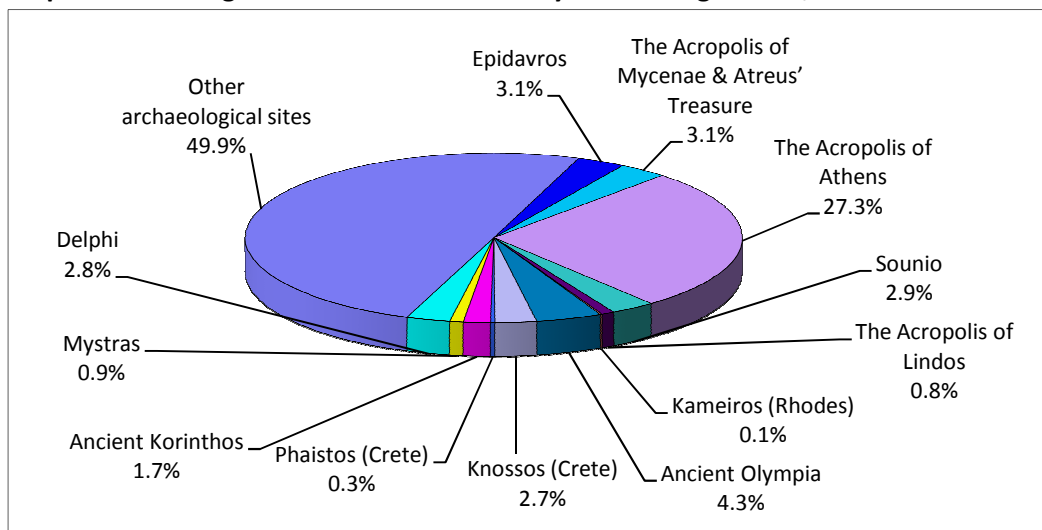
**Graph 2: Receipts from Museums and Archaeological Sites (Jan 2012 - Nov 2016)**



**Graph 3: Percentage distribution of Visitors by Museum, November 2016**



**Graph 4: Percentage distribution of Visitors by Archaeological site, November 2016**



**TABLE 2: VISITORS OF MUSEUMS AND ARCHAEOLOGICAL SITES - TOTAL RECEIPTS  
(2014, 2015, AND JANUARY- NOVEMBER 2015 & 2016)**

<b>I. VISITORS</b>					
Museums and Archaeological sites	2014	2015	JANUARY- NOVEMBER		change
			2015	2016	2016/2015
<b>Total number of visitors (A+B)</b>	<b>14,107,303</b>	<b>14,725,895</b>	<b>14,359,898</b>	<b>13,564,550</b>	<b>-5.5%</b>
<b>A. Museums (C+E)</b>	<b>4,154,142</b>	<b>4,405,842</b>	<b>4,231,198</b>	<b>4,245,580</b>	<b>0.3%</b>
Acropolis Museum	1,377,409	1,510,615	1,443,330	1,133,995	-21.4%
National Archaeological	459,115	476,754	458,905	419,607	-8.6%
Ancient Olympia	134,976	135,972	133,675	121,363	-9.2%
Palace of the Grand Master (Rhodes)	258,906	251,091	249,700	235,191	-5.8%
Herakleion Archaeological (Crete)	198,942	201,657	199,951	349,895	75.0%
Rhodes	79,878	87,824	87,394	70,714	-19.1%
Delphi	190,314	205,369	199,878	160,031	-19.9%
Other museums	1,454,602	1,536,560	1,458,365	1,754,784	20.3%
<b>B. Archaeological Sites (D+F)</b>	<b>9,953,161</b>	<b>10,320,053</b>	<b>10,128,700</b>	<b>9,318,970</b>	<b>-8.0%</b>
Epidavros <sup>(1)</sup>	416,323	443,565	437,519	366,941	-16.1%
The Acropolis of Mycenae & Atreus' Treasure	377,336	402,565	395,105	334,998	-15.2%
The Acropolis of Athens	1,563,434	2,043,868	1,988,942	1,746,438	-12.2%
Sounio	203,269	236,285	231,189	215,849	-6.6%
The Acropolis of Lindos	630,042	580,875	579,737	420,307	-27.5%
Kameiros (Rhodes)	177,859	152,204	152,007	111,689	-26.5%
Ancient Olympia	464,990	439,836	435,657	417,457	-4.2%
Knossos (Crete)	670,499	632,288	624,566	606,290	-2.9%
Phaistos (Crete)	105,643	94,689	94,395	76,695	-18.8%
Ancient Korinthos <sup>(1)</sup>	161,819	141,490	139,526	150,080	7.6%
Mystras <sup>(1)</sup>	113,815	117,010	115,427	112,319	-2.7%
Delphi	293,944	319,754	312,710	282,195	-9.8%
Other archaeological sites	4,774,188	4,715,624	4,621,920	4,477,712	-3.1%
<b>II. VISITORS WHO PAID TICKET</b>					
	2014	2015	JANUARY- NOVEMBER		change
			2015	2016	2016/2015
<b>Total number of visitors who paid ticket (C+D)</b>	<b>9,389,965</b>	<b>10,544,249</b>	<b>10,403,886</b>	<b>8,538,890</b>	<b>-17.9%</b>
C. Museums	2,438,365	2,867,641	2,805,694	2,314,793	-17.5%
D. Archaeological sites	6,951,600	7,676,608	7,598,192	6,224,097	-18.1%
<b>III. VISITORS WITH FREE ADMISSION TICKETS</b>					
	2014	2015	JANUARY- NOVEMBER		change
			2015	2016	2016/2015
<b>Total number of visitors with free admission ticket (E+F)</b>	<b>4,717,338</b>	<b>4,181,646</b>	<b>3,956,012</b>	<b>5,025,660</b>	<b>27.0%</b>
E. Museums	1,715,777	1,538,201	1,425,504	1,930,787	35.4%
F. Archaeological sites	3,001,561	2,643,445	2,530,508	3,094,873	22.3%
<b>IV. RECEIPTS (euros)</b>					
	2014	2015	JANUARY- NOVEMBER		change
			2015	2016	2016/2015
<b>Total Receipts (G+H)</b>	<b>54,663,545.00</b>	<b>56,224,962.00</b>	<b>55,307,248.00</b>	<b>85,267,708.00</b>	<b>54.2%</b>
G. Museums	11,793,726.00	12,385,213.00	12,091,845.00	13,063,195.00	8.0%
H. Archaeological sites	42,869,819.00	43,839,749.00	43,215,403.00	72,204,513.00	67.1%

<sup>(1)</sup> Flat rate ticket, valid both for the museum and the archaeological site.

## EXPLANATORY NOTES

<b>Survey on Museums and Archaeological Sites Attendance</b>	The Survey on Museums and Archaeological Sites Attendance has been producing results since 1970. The survey collects data from the Archaeological Receipts Fund (ARF) of the Ministry of Culture and Sports concerning the number of visitors and the receipts from the tickets sold in the Museums and Archaeological sites of the country. The corresponding data for the Acropolis Museum are available from December 2009 onwards.
<b>Legal Framework</b>	The survey is conducted since 1970 on a regular basis and it produces results on a monthly and yearly basis, in compliance with the Joint Ministerial Decision 15189/B379/73.
<b>Reference Period</b>	1/11/2016 to 30/11/2016.
<b>Methodology and Definitions</b>	The Survey is conducted on a monthly basis from data collected from the Archaeological Receipts Fund (ARF) of the Ministry of Culture and Sports concerning on the number of visitors and the receipts from the tickets sold in the Museums and Archaeological sites of the country. ELSTAT tabulates the data on Museums and the Archaeological sites for the whole of the Country, by month and by year.

### Information on ticket payment

- From January 2002 onwards, the number of Museums' visitors includes both the visitors who have bought a ticket and the visitors with free admission ticket. From 16-06-1996 onwards, the Museums and the Archaeological sites all over Greece have a paid admission for all the visitors, Greeks and foreigners, all over the year, except in the following days, which are free admission days:
- National Holidays (25th of March and 28th of October)
- The first Sunday every month during the five month period from 1 November to 31 March
- The 6th of March (in memory of Melina Merkouri)
- The 18th of April (International Monuments Day)
- The 18th of May (International Museums Day)
- The 5th of June (International Environment Day)
- The last weekend of September, annually (European Heritage Days)

### Free admission tickets

The admission to Museums and Archaeological site is free for:

- Young people from EU-countries aged under 18 years, with current identification card to confirm their age,
- Students of Universities and of Higher and Technical Education Institutions or equivalent institutions of EU-countries, as well as of Tour Guide Training Institutes, with valid student identification card or International Student Identity Card (ISIC)
- Employees of the Hellenic Ministry of Culture, with valid professional identity card
- ICOM and ICOMOS cardholders
- Tour Guides with their current working identification card from the Ministry of Development
- Teachers accompanying pupils and students on primary, secondary and tertiary education institution tours
- Journalists with valid journalists' identification card
- Members of Associations and Societies of Friends of Museums and Archaeological Sites
- Official guests of the Greek Government, after relevant approval
- Escorts of blind persons and persons with disabilities
- Free admission cardholders
- Holders of the Culture Card

### Number of flat rate tickets

From April 1999 onwards, in some museums and the nearby archaeological sites, in addition to the ordinary ticket, a new "flat rate ticket" was established, which is valid for both the museum and the nearby archaeological site. The total number of these flat rate tickets for **November 2016** was **10,527**.

<b>References</b>	More information on the Survey on Museums and Archaeological Sites Attendance and detailed time series are available on: <a href="http://www.statistics.gr/en/statistics/-/publication/SCI21/">http://www.statistics.gr/en/statistics/-/publication/SCI21/</a>
-------------------	----------------------------------------------------------------------------------------------------------------------------------------------------------------------------------------------------------------------------------------------------------------