



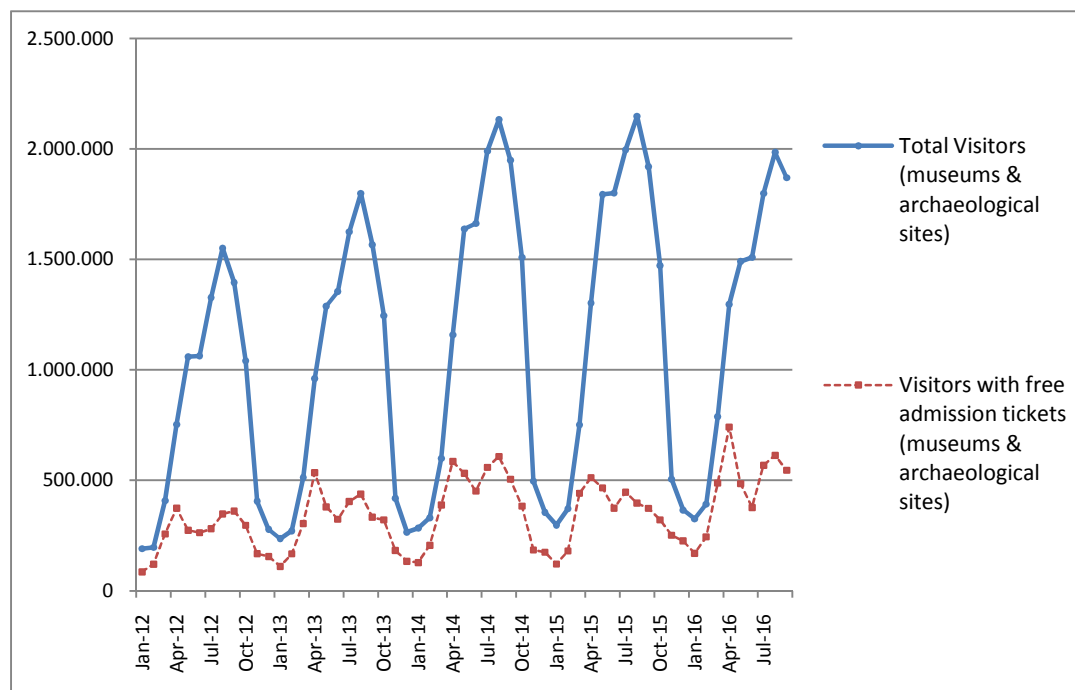
## PRESS RELEASE

### SURVEY ON MUSEUMS AND ARCHAEOLOGICAL SITES ATTENDANCE SEPTEMBER 2016

The Hellenic Statistical Authority (ELSTAT) announces the results of the *Survey on Museums and Archaeological Sites Attendance* for September 2016. More specifically:

- In September 2016 compared with the corresponding month of 2015, Museums experienced a 4.3% increase in the number of visitors and a 79.5% increase in the number of free admission visitors as well as a 14.3% increase in their receipts (Table 1).
- In September 2016 compared with the corresponding month of 2015, the number of visitors at Archaeological sites recorded a decrease of 5.0%, while an increase of 32.8% was observed in the number of free admission visitors and an 83.9% increase in the corresponding receipts (Table 1).
- During the nine-month period from January to September 2016, a decrease of 1.8% was observed in the number of visitors of Museums, while an increase of 31.1% was recorded in the number of free admission visitors and a 6.2% increase in the relevant receipts, in comparison with the corresponding period of 2015 (Table 2).
- As regards Archaeological sites, during the nine-month period from January to September 2016, a decrease of 9.8% was recorded in the number of visitors, while a 21.7% increase was observed in the number of free admission visitors and a 65.6% increase in the relevant receipts, in comparison with the corresponding period of 2015 (Table 2).

**Graph 1: Visitors of Museums and Archaeological sites (Jan 2012 – Sep 2016)**



**Information:**

Social Statistics Division

Section of Culture and Sports statistics,

Argyro Pateraki (Tel: +30 213 1352129, e-mail: [ar.pateraki@statistics.gr](mailto:ar.pateraki@statistics.gr))

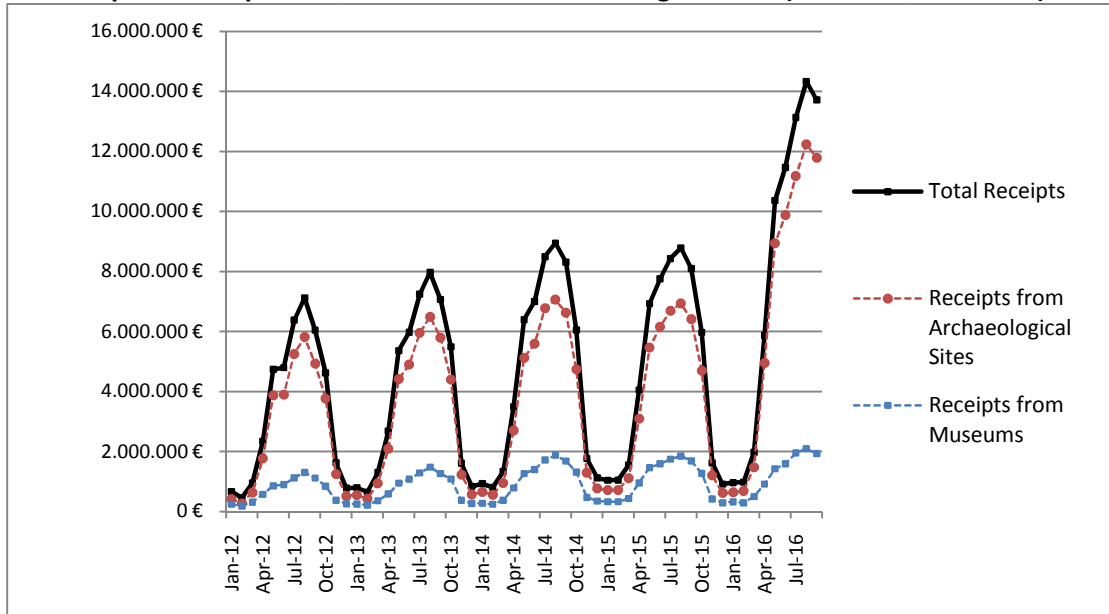
**TABLE 1: VISITORS OF MUSEUMS AND ARCHAEOLOGICAL SITES - TOTAL RECEIPTS  
(SEPTEMBER 2015 & SEPTEMBER 2016)**

<b>I. VISITORS</b>			
Museums and Archaeological sites	2015	2016	Change 2016/2015
<b>Total number of visitors (A+B)</b>	<b>1,920,119</b>	<b>1,870,067</b>	<b>-2.6%</b>
<b>A. Museums (C+E)</b>	<b>495,064</b>	<b>516,119</b>	<b>4.3%</b>
Acropolis Museum	151,339	148,078	-2.2%
National Archaeological	51,833	30,492	-41.2%
Ancient Olympia	16,975	13,601	-19.9%
Palace of the Grand Master (Rhodes)	40,981	41,580	1.5%
Herakleion Archaeological (Crete)	31,342	65,170	107.9%
Rhodes	14,172	14,461	2.0%
Delphi	23,303	18,353	-21.2%
Other Museums	165,119	184,384	11.7%
<b>B. Archaeological Sites (D+F)</b>	<b>1,425,055</b>	<b>1,353,948</b>	<b>-5.0%</b>
Epidavros <sup>(1)</sup>	53,635	46,812	-12.7%
The Acropolis of Mycenae & Atreus' Treasure	47,423	40,414	-14.8%
The Acropolis of Athens	257,329	231,112	-10.2%
Sounio	23,452	26,184	11.6%
The Acropolis of Lindos	101,151	76,906	-24.0%
Kameiros (Rhodes)	26,520	21,235	-19.9%
Ancient Olympia	59,804	54,093	-9.5%
Knossos (Crete)	103,836	93,774	-9.7%
Phaistos (Crete)	14,999	12,458	-16.9%
Ancient Korinthos <sup>(1)</sup>	16,389	19,598	19.6%
Mystras <sup>(1)</sup>	13,927	13,871	-0.4%
Delphi	35,189	41,223	17.1%
Other Archaeological sites	671,401	676,268	0.7%
<b>II. VISITORS WHO PAID TICKET</b>			
	2015	2016	Change 2016/2015
<b>Total number of visitors who paid ticket (C+D)</b>	<b>1,546,785</b>	<b>1,324,568</b>	<b>-14.4%</b>
C. Museums	388,518	324,871	-16.4%
D. Archaeological sites	1,158,267	999,697	-13.7%
<b>III. VISITORS WITH FREE ADMISSION TICKETS</b>			
	2015	2016	Change 2016/2015
<b>Total number of visitors with free admission ticket (E+F)</b>	<b>373,334</b>	<b>545,499</b>	<b>46.1%</b>
E. Museums	106,546	191,248	79.5%
F. Archaeological sites	266,788	354,251	32.8%
<b>IV. RECEIPTS (euro)</b>			
	2015	2016	Change 2016/2015
<b>Total Receipts (G+H)</b>	<b>8,101,593,00</b>	<b>13,719,275,00</b>	<b>69.3%</b>
G. Museums	1,690,792,00	1,932,522,00	14.3%
H. Archaeological sites	6,410,801,00	11,786,753,00	83.9%

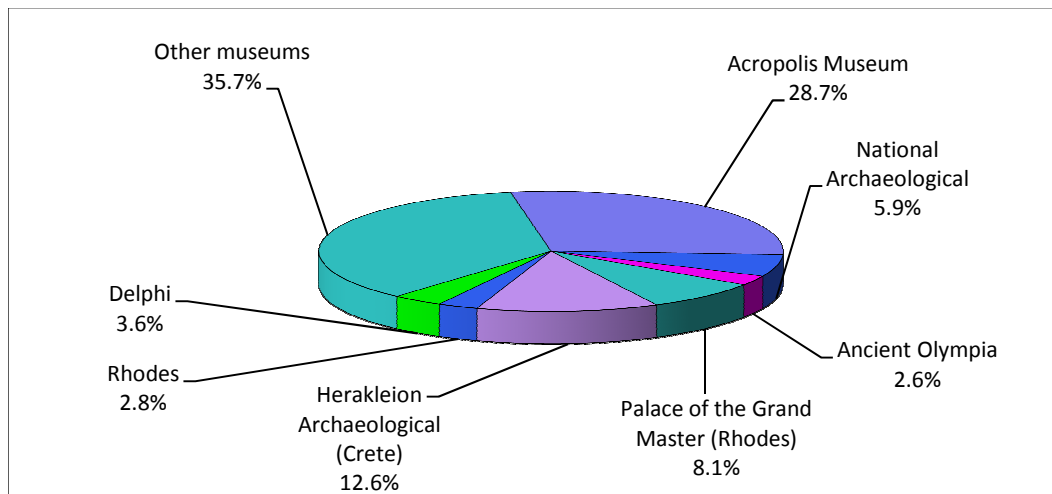
<sup>(1)</sup> Flat rate ticket, valid both for the museum and the archaeological site.

The following graphs depict the evolution of the receipts (Graph 2), as well as the number of visitors by Museum and Archaeological Site (Graphs 3 and 4, respectively).

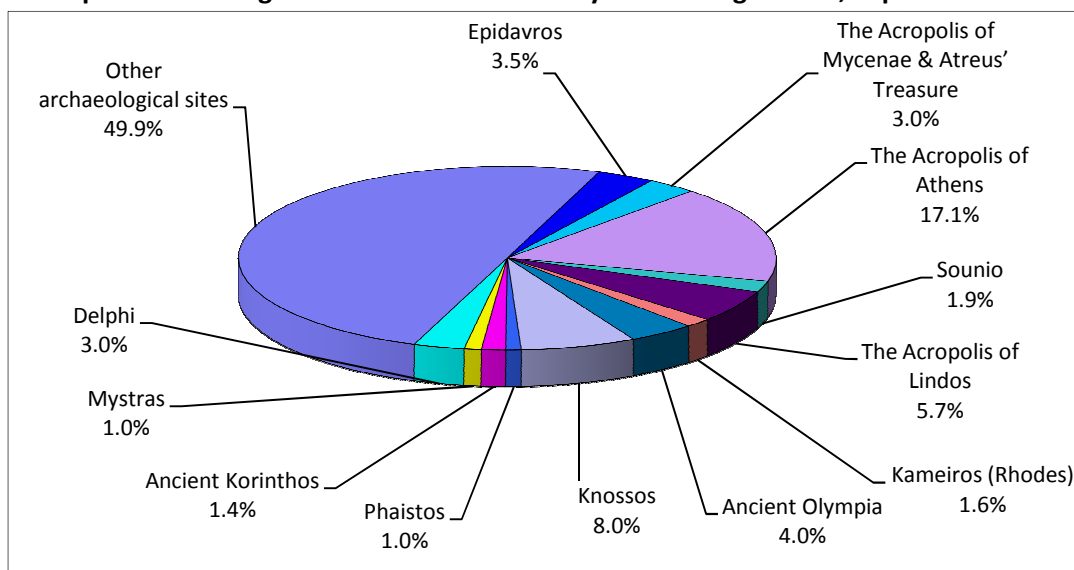
**Graph 2: Receipts from Museums and Archaeological Sites (JAN 2012 - SEP 2016)**



**Graph 3: Percentage distribution of Visitors by Museum, September 2016**



**Graph 4: Percentage distribution of Visitors by Archaeological site, September 2016**



**TABLE 2: VISITORS OF MUSEUMS AND ARCHAEOLOGICAL SITES - TOTAL RECEIPTS  
(2014,2015, AND JANUARY- SEPTEMBER 2015 & 2016)**

<b>I. VISITORS</b>					
Museums and Archaeological sites	2014	2015	JANUARY- SEPTEMBER		change
			2015	2016	2016/2015
<b>Total number of visitors (A+B)</b>	<b>14,107,303</b>	<b>14,725,895</b>	<b>12,382,372</b>	<b>11,457,034</b>	<b>-7.5%</b>
<b>A. Museums (C+E)</b>	<b>4,154,142</b>	<b>4,405,842</b>	<b>3,596,195</b>	<b>3,532,776</b>	<b>-1.8%</b>
Acropolis Museum	1,377,409	1,510,615	1,222,013	1,104,883	-9.6%
National Archaeological	459,115	476,754	389,929	338,458	-13.2%
Ancient Olympia	134,976	135,972	116,907	104,785	-10.4%
Palace of the Grand Master (Rhodes)	258,906	251,091	218,754	199,866	-8.6%
Herakleion Archaeological (Crete)	198,942	201,657	164,925	300,272	82.1%
Rhodes	79,878	87,824	76,076	60,420	-20.6%
Delphi	190,314	205,369	175,725	135,895	-22.7%
Other Museums	1,454,602	1,536,560	1,231,866	1,288,197	4.6%
<b>B. Archaeological Sites (D+F)</b>	<b>9,953,161</b>	<b>10,320,053</b>	<b>8,786,177</b>	<b>7,924,258</b>	<b>-9.8%</b>
Epidavros <sup>(1)</sup>	416,323	443,565	392,394	320,223	-18.4%
The Acropolis of Mycenae & Atreus' Treasure	377,336	402,565	352,156	290,783	-17.4%
The Acropolis of Athens	1,563,434	2,043,868	1,696,057	1,474,297	-13.1%
Sounio	203,269	236,285	198,717	183,297	-7.8%
The Acropolis of Lindos	630,042	580,875	519,296	367,311	-29.3%
Kameiros (Rhodes)	177,859	152,204	135,502	97,847	-27.8%
Ancient Olympia	464,990	439,836	364,315	355,452	-2.4%
Knossos (Crete)	670,499	632,288	541,426	527,981	-2.5%
Phaistos (Crete)	105,643	94,689	81,999	65,341	-20.3%
Ancient Korinthos <sup>(1)</sup>	161,819	141,490	117,438	124,770	6.2%
Mystras <sup>(1)</sup>	113,815	117,010	102,531	98,168	-4.3%
Delphi	293,944	319,754	276,827	244,516	-11.7%
Other Archaeological sites	4,774,188	4,715,624	4,007,519	3,774,272	-5.8%
<b>II. VISITORS WHO PAID TICKET</b>					
	2014	2015	JANUARY- SEPTEMBER		change
			2015	2016	2016/2015
<b>Total number of visitors who paid ticket (C+D)</b>	<b>9,389,965</b>	<b>10,544,249</b>	<b>8,998,861</b>	<b>7,225,348</b>	<b>-19.7%</b>
C. Museums	2,438,365	2,867,641	2,380,751	1,939,497	-18.5%
D. Archaeological sites	6,951,600	7,676,608	6,618,110	5,285,851	-20.1%
<b>III. VISITORS WITH FREE ADMISSION TICKETS</b>					
	2014	2015	JANUARY- SEPTEMBER		change
			2015	2016	2016/2015
<b>Total number of visitors with free admission ticket (E+F)</b>	<b>4,717,338</b>	<b>4,181,646</b>	<b>3,383,511</b>	<b>4,231,586</b>	<b>25.1%</b>
E. Museums	1,715,777	1,538,201	1,215,444	1,593,179	31.1%
F. Archaeological sites	3,001,561	2,643,445	2,168,067	2,638,407	21.7%
<b>IV. RECEIPTS (euro)</b>					
	2014	2015	JANUARY- SEPTEMBER		change
			2015	2016	2016/2015
<b>Total Receipts (G+H)</b>	<b>54,663,545,00</b>	<b>56,224,962,00</b>	<b>47,707,623,00</b>	<b>72,818,388,00</b>	<b>52.6%</b>
G. Museums	11,793,726,00	12,385,213,00	10,400,385,00	11,045,005,00	6.2%
H. Archaeological sites	42,869,819,00	43,839,749,00	37,307,238,00	61,773,383,00	65.6%

<sup>(1)</sup> Flat rate ticket, valid both for the museum and the archaeological site.

## EXPLANATORY NOTES

<b>Survey on Museums and Archaeological Sites Attendance</b>	The Survey on Museums and Archaeological Sites Attendance has been producing results since 1970. The survey collects data from the Archaeological Receipts Fund (ARF) of the Ministry of Culture and Sports concerning the number of visitors and the receipts from the tickets sold in the Museums and Archaeological sites of the country. The corresponding data for the Acropolis Museum are available from December 2009 onwards.
<b>Legal Framework</b>	The survey is conducted since 1970 on a regular basis and it produces results on a monthly and yearly basis, in compliance with the Joint Ministerial Decision 15189/B379/73.

**Reference Period** 1/9/2016 to 30/9/2016.

**Methodology and Definitions** The Survey is conducted on a monthly basis from data collected from the Archaeological Receipts Fund (ARF) of the Ministry of Culture and Sports concerning on the number of visitors and the receipts from the tickets sold in the Museums and Archaeological sites of the country. ELSTAT tabulates the data on Museums and the Archaeological sites for the whole of the Country, by month and by year.

### Information on ticket payment

- From January 2002 onwards, the number of Museums' visitors includes both the visitors who have bought a ticket and the visitors with free admission ticket. From 16-06-1996 onwards, the Museums and the Archaeological sites all over Greece have a paid admission for all the visitors, Greeks and foreigners, all over the year, except in the following days, which are free admission days:
- National Holidays (25th of March and 28th of October)
- The first Sunday every month during the five month period from 1 November to 31 March
- The 6th of March (in memory of Melina Merkouri)
- The 18th of April (International Monuments Day)
- The 18th of May (International Museums Day)
- The 5th of June (International Environment Day)
- The last weekend of September, annually (European Heritage Days)

### Free admission tickets

The admission to Museums and Archaeological site is free for:

- Young people from EU-countries aged under 18 years, with current identification card to confirm their age,
- Students of Universities and of Higher and Technical Education Institutions or equivalent institutions of EU-countries, as well as of Tour Guide Training Institutes, with valid student identification card or International Student Identity Card (ISIC)
- Employees of the Hellenic Ministry of Culture, with valid professional identity card
- ICOM and ICOMOS cardholders
- Tour Guides with their current working identification card from the Ministry of Development
- Teachers accompanying pupils and students on primary, secondary and tertiary education institution tours
- Journalists with valid journalists' identification card
- Members of Associations and Societies of Friends of Museums and Archaeological Sites
- Official guests of the Greek Government, after relevant approval
- Escorts of blind persons and persons with disabilities
- Free admission cardholders
- Holders of the Culture Card

### Number of flat rate tickets

From April 1999 onwards, in some museums and the nearby archaeological sites, in addition to the ordinary ticket, a new "flat rate ticket" was established, which is valid for both the museum and the nearby archaeological site. The total number of these flat rate tickets for **September 2016** was **98,077**.

**References** More information on the Survey on Museums and Archaeological Sites Attendance and detailed time series are available on: <http://www.statistics.gr/en/statistics/-/publication/SCI21/>