



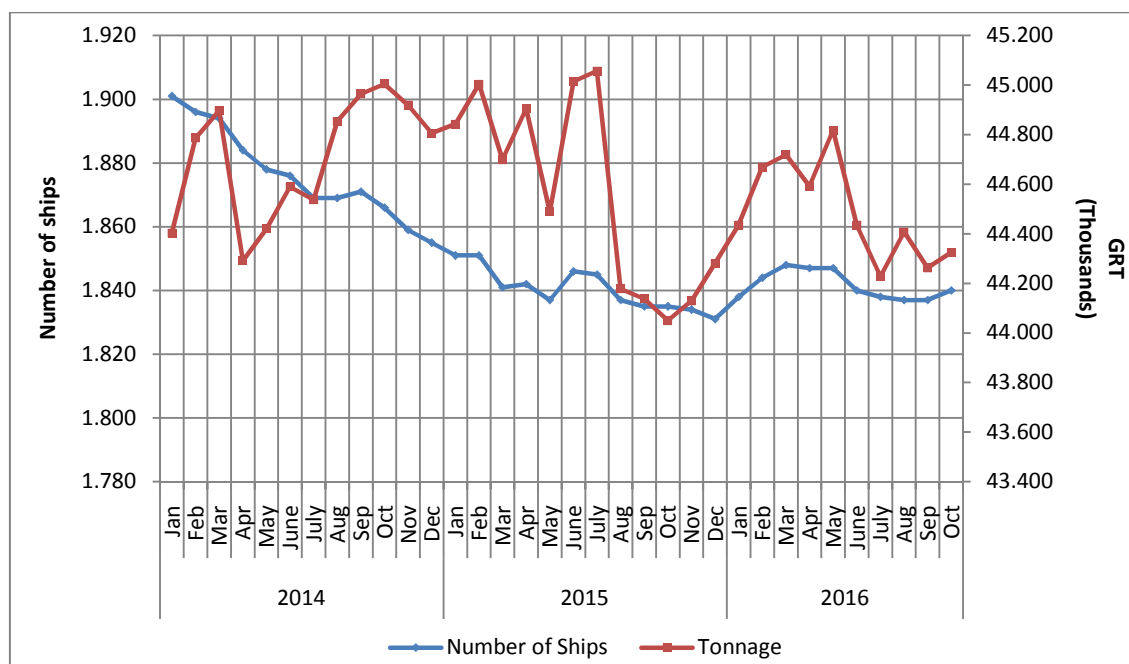
PRESS RELEASE

GREEK MERCHANT FLEET: OCTOBER 2016 (Provisional data)

The Hellenic Statistical Authority (ELSTAT) announces data on the Greek Merchant Fleet (for vessels of 100 GRT¹) for October 2016. Particularly:

- The Greek Merchant Fleet increased by 0.3% in October 2016 compared with October 2015, while it recorded a decline of 1.7% in October 2015 compared with October 2014 (Table 1).
- The gross tonnage of the Greek Merchant Fleet, for vessels of 100 GRT and over, recorded an increase of 0.6% in October 2016 compared with October 2015, while a decline of 2.1% was observed in October 2015 compared to October 2014 (Table 1).

**Graph 1. Greek Merchant ships of 100 GRT and over:
January 2014 – October 2016**



Information:

Division of Statistics on Trade and Services

Section of Shipping Statistics

Papandreou Konstantinos

Tel : 213 135 2187

Fax: 213 135 3059

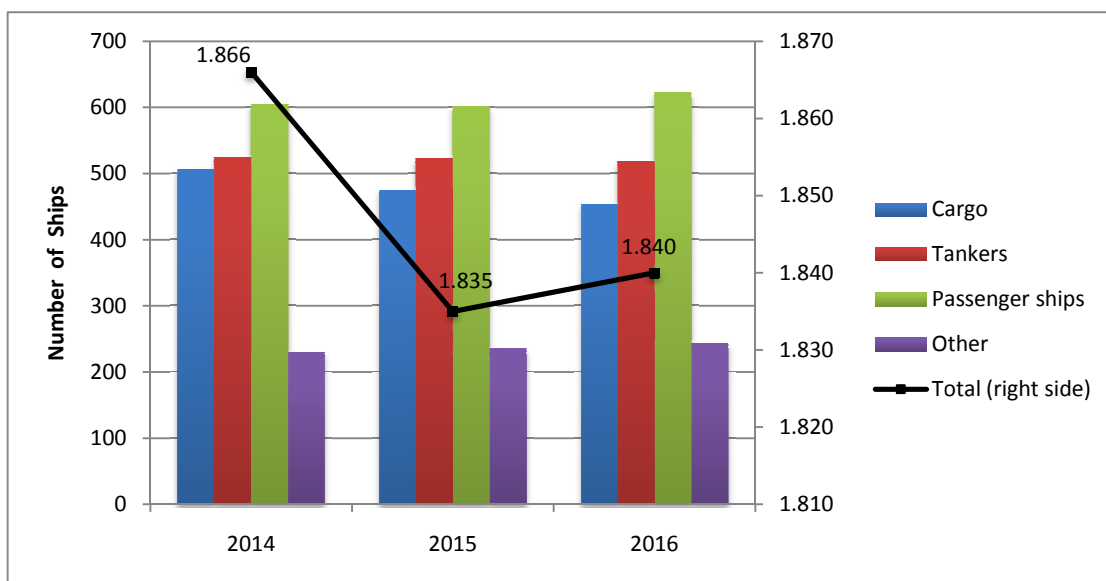
email: k.papandreou@statistics.gr

¹ GRT: Gross Tonnage

Table 1. Number and tonnage of Greek Merchant ships of 100 GRT and over, October 2014 – 2016

October										
Types of ships	2014		2015		Change % (2015-2014)		2016		Change % (2016-2015)	
	Number of ships	Tonnage (GRT)	Number of ships	Tonnage (GRT)	Number of ships	Tonnage (GRT)	Number of ships	Tonnage (GRT)	Number of ships	Tonnage (GRT)
Cargo	507	16,451,106	475	15,071,921	-6.3%	-8.4%	454	14,666,442	-4.4%	-2.7%
Tankers	524	27,111,545	523	27,571,783	-0.2%	1.7%	519	28,198,686	-0.8%	2.3%
Passenger ships	605	1,374,000	602	1,336,704	-0.5%	-2.7%	623	1,374,231	3.5%	2.8%
Other	230	67,837	235	69,171	2.2%	2.0%	244	85,325	3.8%	23.4%
Total:	1,866	45,004,488	1,835	44,049,579	-1.7%	-2.1%	1,840	44,324,684	0.3%	0.6%

Graph 2a: Number of Greek Merchant ships of 100 GRT and over October 2014 – 2016



Graph 2b: Tonnage of Greek Merchant Ships of 100 GRT and over, October 2014 – 2016

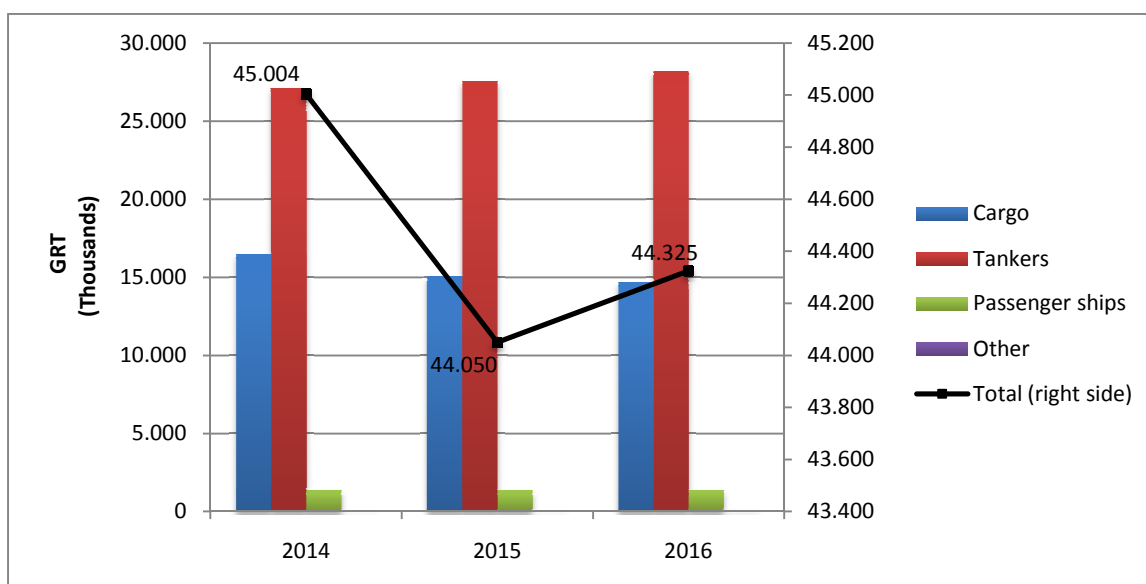


Table 2. Distribution of the Greek Merchant ships of 100 GRT and over by tonnage groups, October 2014 – 2016

October										
Tonnage groups	2014		2015		Change % (2015-2014)		2016		Change % (2016-2015)	
	Number of Ships	Tonnage (GRT)	Number of Ships	Tonnage (GRT)	Number of Ships	Tonnage (GRT)	Number of Ships	Tonnage (GRT)	Number of Ships	Tonnage (GRT)
[100-500)	731	185,103	726	184,802	-0.7%	-0.2%	741	188,566	2.1%	2.0%
[500-3.000)	331	418,270	331	411,824	0.0%	-1.5%	338	419,031	2.1%	1.8%
[3.000-7.000)	71	320,215	71	317,544	0.0%	-0.8%	73	324,475	2.8%	2.2%
[7.000-10.000)	24	204,158	23	195,134	-4.2%	-4.4%	21	177,795	-8.7%	-8.9%
[10.000-20.000)	42	640,231	44	661,451	4.8%	3.3%	47	697,632	6.8%	5.5%
[20.000-30.000)	94	2,548,754	87	2,338,999	-7.4%	-8.2%	82	2,187,951	-5.7%	-6.5%
[30.000+	573	40,687,757	553	39,939,825	-3.5%	-1.8%	538	40,329,234	-2.7%	1.0%
Σύνολο:	1,866	45,004,488	1,835	44,049,579	-1.7%	-2.1%	1,840	44,324,684	0.3%	0.6%

Graph 3: Distribution of Greek Merchant ships of 100 GRT and over by tonnage groups, October 2014 – 2016

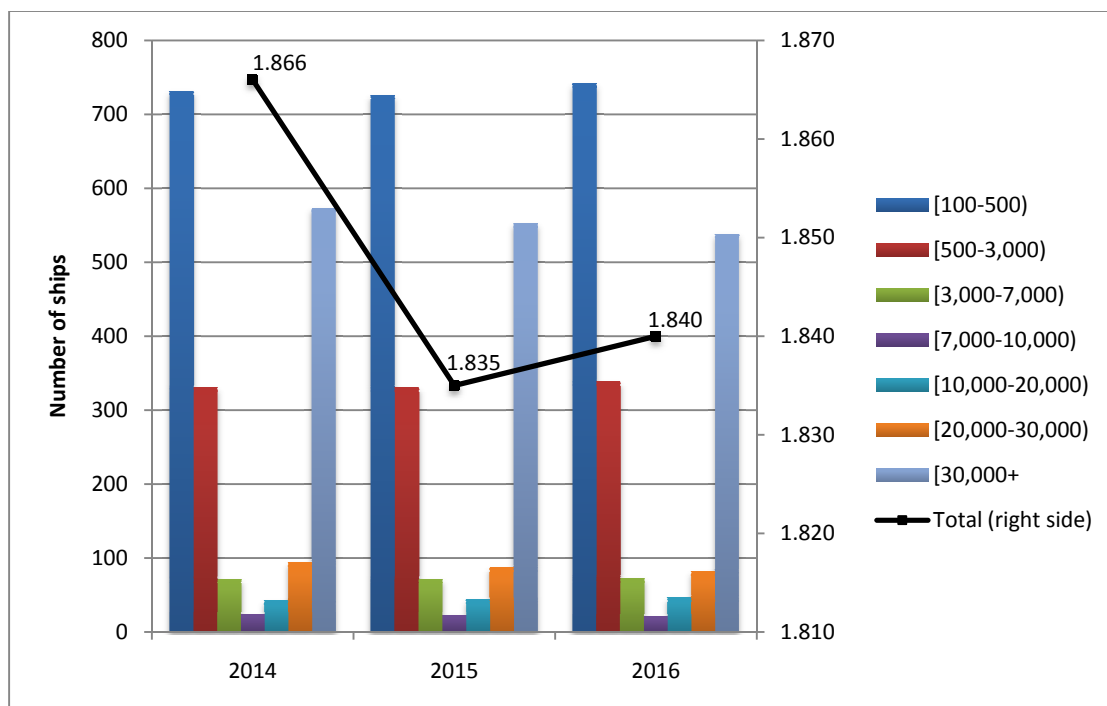
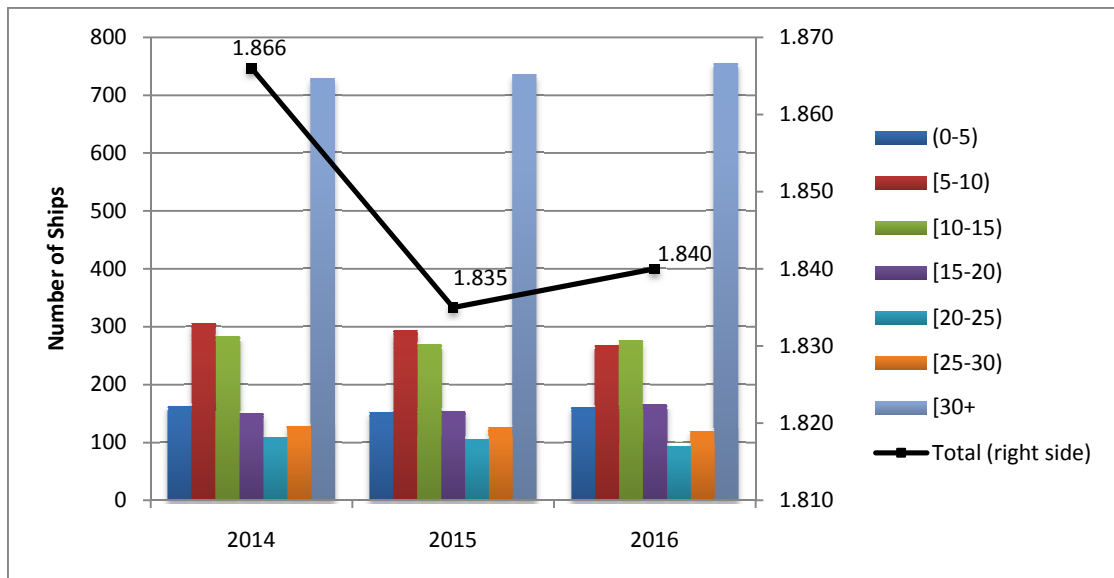


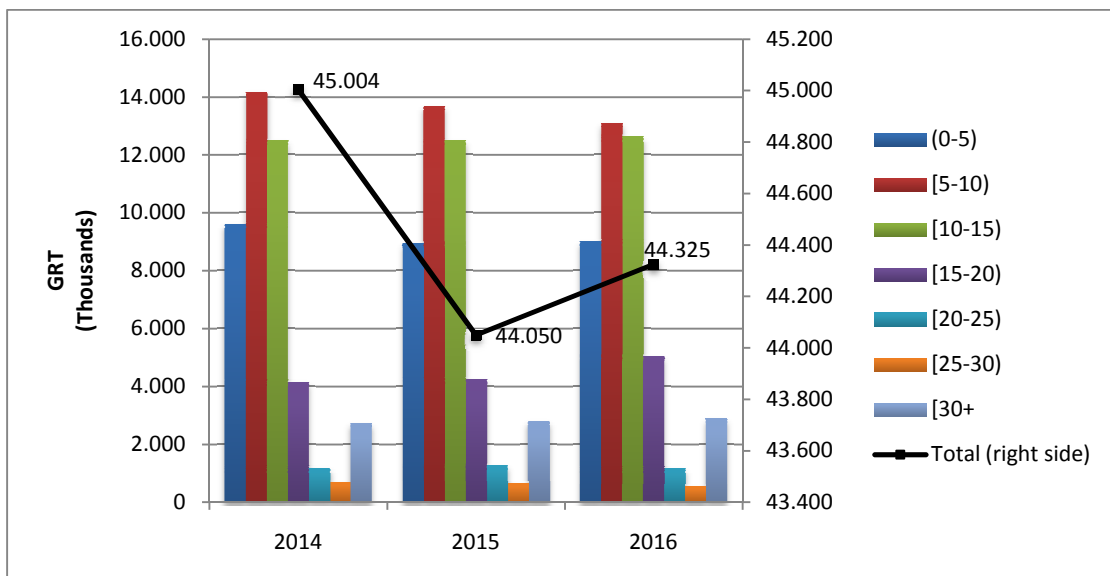
Table 3. Distribution of Greek Merchant ships of 100 GRT and over by age groups, October 2014 – 2016

October										
Age groups	2014		2015		Change % (2015-2014)		2016		Change % (2016-2015)	
	Number of Ships	Tonnage (GRT)	Number of Ships	Tonnage (GRT)	Number of Ships	Tonnage (GRT)	Number of Ships	Tonnage (GRT)	Number of Ships	Tonnage (GRT)
(0-5)	163	9,604,017	152	8,931,214	-6.7%	-7.0%	161	8,996,924	5.9%	0.7%
[5-10)	305	14,169,889	293	13,670,964	-3.9%	-3.5%	268	13,089,612	-8.5%	-4.3%
[10-15)	283	12,494,600	269	12,491,454	-4.9%	0.0%	276	12,619,143	2.6%	1.0%
[15-20)	150	4,137,392	154	4,247,098	2.7%	2.7%	166	5,041,346	7.8%	18.7%
[20-25)	108	1,179,225	106	1,280,598	-1.9%	8.6%	94	1,158,715	-11.3%	-9.5%
[25-30)	128	695,186	126	638,088	-1.6%	-8.2%	120	534,332	-4.8%	-16.3%
[30+)	729	2,724,179	735	2,790,163	0.8%	2.4%	755	2,884,612	2.7%	3.4%
Σύνολο:	1,866	45,004,488	1,835	44,049,579	-1.7%	-2.1%	1,840	44,324,684	0.3%	0.6%

Graph 4a. Distribution of Greek Merchant ships 100 GRT and over by age groups, October 2014 – 2016



Graph 4b. Tonnage of Greek Merchant ships of 100 GRT and over by age groups, October 2014 – 2016



METHODOLOGICAL NOTES

- Greek Merchant Fleet Survey** The Survey on the Greek Merchant Fleet is conducted on a monthly basis since 1964 without any major methodological changes ever since. The purpose of the survey is to fully record statistical data on the number and basic characteristics of the Greek merchant ships, thus depicting the evolution over the course of time of the Greek merchant fleet.
- Legal Framework** The survey is conducted in compliance with the joint Ministerial Decision (No 6792/G-81/11-4-97), signed by the Minister of National Economy and the Minister of Mercantile Marine.
- Reference Period** The results of the survey refer to the end of October 2016.
- Coverage** The survey covers all domestic Port Authorities, as well as Greek Consular Port Authorities abroad, which keep ship registers. These Authorities have to send a report on a monthly basis to the Hellenic Statistical Authority (ELSTAT) pertaining to the changes in the Greek merchant ships registered in their ship registers.
- Definitions**
- Merchant ship:** Seagoing self-propelled vessel, at least of 10 GRT, designed for the carriage of goods, transport of passengers, for fishing, towing or specially fitted out for other commercial maritime activities.
- Greek merchant fleet:** The total number of the merchant ships registered in Greece, which belong to natural or legal persons residing on the Greek territory. The Greek flag carried by these ships means that all their maritime activities (subsidies for ship building, cargo limitations and other tax provisions) are governed by commercial and economic rules which are laid down by the respective Greek authorities.
- Gross Register Tonnage (GRT):** Refers to the spaces within the hull and of the enclosed spaces above the deck which are available for carrying goods, food, passengers and crew. GRT is equal to the volume of 100 cubic feet or 2.83 m³.
- Net Register Tonnage (NRT):** It is derived from the gross tonnage by deducting allowances in respect of spaces used for the crew, navigating and propelling machinery, fuel and water ballasts, and other spaces not used for passengers or cargo.
- Age of ship:** indicated by the year of original construction of the hull or that of the hull containing the engine room.
- Methodology** It is an exhaustive survey conducted by all domestic Port Authorities and Greek Consular Port Authorities abroad, which report to ELSTAT, on a monthly basis, on changes in the ships pertaining to: a) new registrations of ships in the ship registers, b) change in the name of a ship, c) change of ownership, d) transfers to or from a different port, e) deletion of a ship from a ship a register, f) final measurement – remeasurement of ships, g) replacement of the ship’s engine. All these data, after being dully processed, are used to update, through a specially designed software application, the Official Register of Greek Merchant Ships. This Register is used for the production of monthly and annual statistical results.
- References** Further information (tables, charts) concerning the Survey on the Greek Merchant Fleet can be found on the webpage of ELSTAT (www.statistics.gr), under the link: < *Industry, Trade, Services, Transport* > *Transport* > *Shipping* > *Greek Merchant Fleet of 100 GRT and over*>>.