



PRESS RELEASE

SHORT-TERM INDICES OF EMPLOYMENT, HOURS WORKED AND GROSS WAGES AND SALARIES IN MAIN SECTIONS OF THE ECONOMY¹: 3rd Quarter 2016

The Hellenic Statistical Authority (ELSTAT), is publishing the quarterly Press Release presenting data on Short-Term Indices of Employment, Hours Worked and Gross Wages and Salaries in main sections of the economy for the 3rd quarter 2016.

The evolution of the Short-Term Indices of Employment, Hours Worked and Gross Wages and Salaries in the 3rd quarter 2016 in comparison to the corresponding indices in the 3rd quarter 2015 is as follows:

NACE Rev.2	Main Sections of Economy	Annual rate of change (%) (2016/2015)		
		Index of Persons Employed	Index of Hours worked	Index of Gross wages and salaries
B	Mining and quarrying	7.5	18.4	21.7
C	Manufacturing	0.1	6.9	5.2
D	Electricity, gas, steam and air conditioning	11.2	14.6	6.6
E	Water supply, sewerage, waste management and remediation activities	-22.1	-5.8	-24.4
F	Construction	29.6	21.2	10.0
H	Transportation and Storage	-2.2	-1.7	-1.8
I	Activities Accommodation Services and Food Services	-0.4	-1.5	9.0
J	Information and Communication	10.2	9.1	0.0
M	Professional, scientific and technical activities	-2.4	-0.5	-17.9
N	Administrative and support service activities	6.6	9.0	10.6

Information

Division of Population and Labour Market Statistics
Wages and Salaries Statistics Section

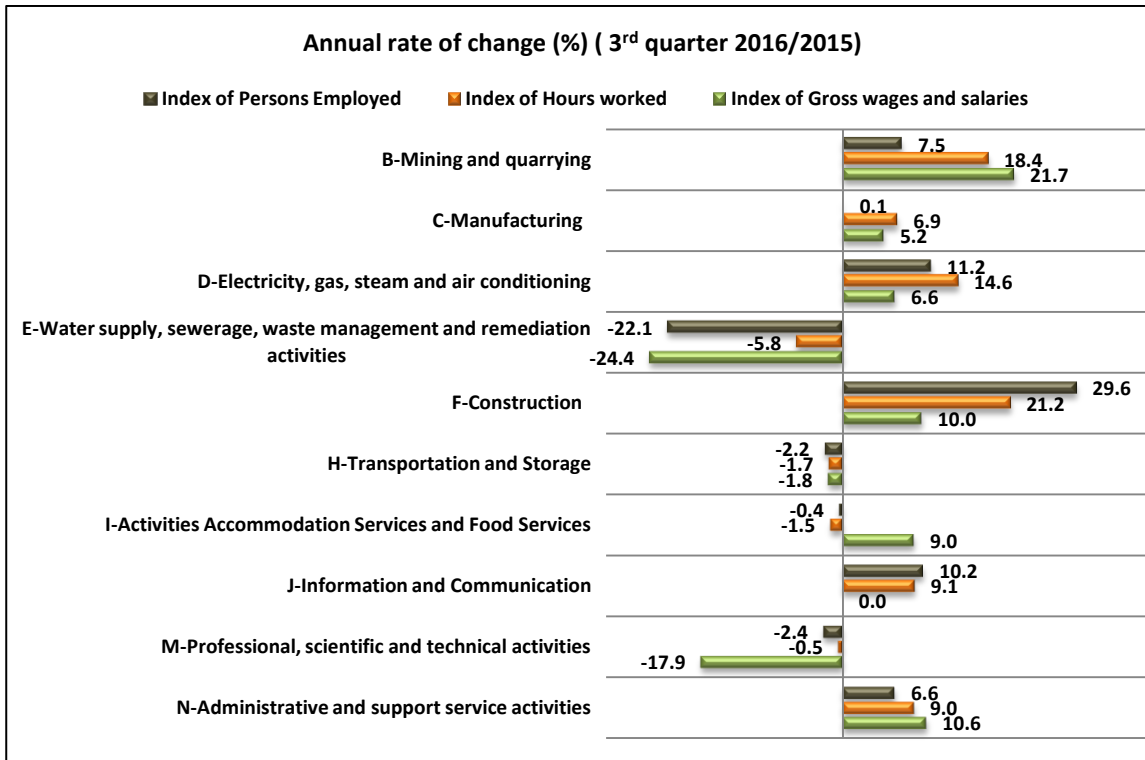
S. Bakalidou

Tel.: 213 135 2175

Fax: 213 135 2876

E-mail: s.bakalidou@statistics.gr

¹Refers to ten main sections of economic activities of NACE Rev.2, namely for B-E (Mining-Quarrying and Industry), F (Construction), H-J and M-N (Other Services)



In the table that follows, are presented analytically the short-term Indices of Employment, Hours Worked and Gross Wages without any adjustment (seasonal or adjustment for the number of working days) in ten main sections of economic activities of NACE Rev.2. Furthermore, are presented data of the annual change of change for each.

In the Graphs 1 to 10 that follow is shown the evolution over time of the Indices of Employment, Hours Worked and Gross Wages and Salaries broken down by NACE Rev.2 Section for the 3rd quarter of the years 2010 up to 2016, as well as their annual changes.

¹Refers to ten main sections of economic activities of NACE Rev.2, namely for B-E (Mining-Quarrying and Industry), F (Construction), H-J and M-N (Other Services)

Table 1: Evolution of Short-term Indices of Persons Employed, Hours worked and Gross wages and salaries in main sections of Economy¹, 3rd quarter 2010-2016

Not seasonally adjusted data and not adjusted for the number of the working days

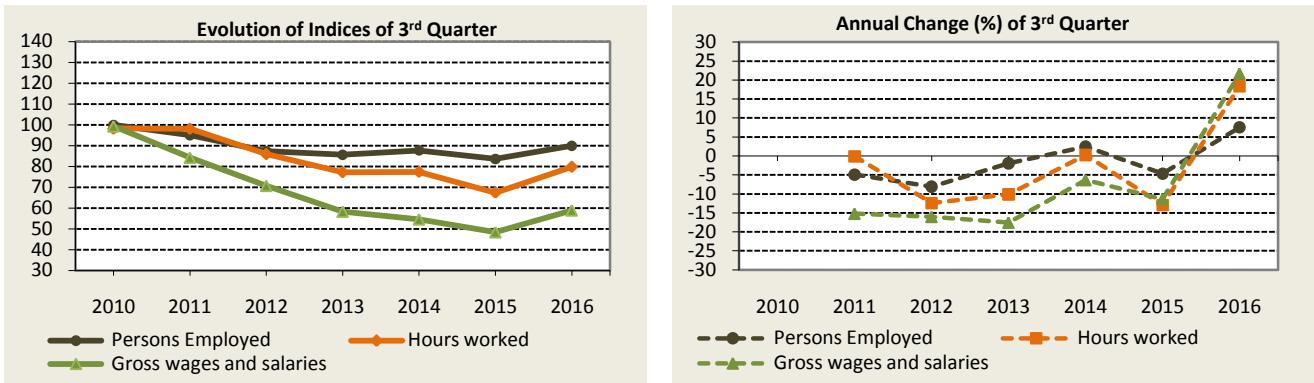
2010 = 100,0

Year	Section of Economic Activity	Index of Persons Employed	Annual rate of change (%)	Index of Hours worked	Annual rate of change (%)	Index of Gross wages and salaries	Annual rate of change (%)
2010	B	99.9		98.2		99.3	
	C	100.1		96.1		96.6	
	D	102.3		100.8		96.2	
	E	99.1		93.2		89.3	
	F	98.9		96.5		98.6	
	H	100.4		98.4		93.1	
	I	108		117.4		105.5	
	J	99.2		95.9		92.5	
	M	99.7		97.8		93.6	
N	107.2		106.1		102.5		
2011	B	95	-4.9	98.1	-0.1	84.2	-15.2
	C	93.1	-7.0	93.8	-2.4	88.4	-8.5
	D	97.7	-4.5	103.3	2.5	88.7	-7.8
	E	129.3	30.5	135.6	45.5	117.2	31.2
	F	84.9	-14.2	86.2	-10.7	81.4	-17.4
	H	91.6	-8.8	90.0	-8.5	80.9	-13.1
	I	91.1	-15.6	104.3	-11.2	86.7	-17.8
	J	90.2	-9.1	90.7	-5.4	85.4	-7.7
	M	88.4	-11.3	89.7	-8.3	82.8	-11.5
N	98.1	-8.5	100.6	-5.2	91.8	-10.4	
2012	B	87.3	-8.1	85.9	-12.4	70.7	-16.0
	C	88	-5.5	88.0	-6.2	74.6	-15.6
	D	57.4	-41.2	54.2	-47.5	44.9	-49.4
	E	160.6	24.2	195.9	44.5	134.8	15.0
	F	86.4	1.8	79.7	-7.5	64.2	-21.1
	H	88.1	-3.8	89.5	-0.6	70.2	-13.2
	I	81.5	-10.5	88.7	-15.0	70.5	-18.7
	J	79.1	-12.3	82	-9.6	67.8	-20.6
	M	82.7	-6.4	82.3	-8.2	75.8	-8.5
N	94.7	-3.5	97.1	-3.5	79.2	-13.7	
2013	B	85.6	-1.9	77.2	-10.1	58.3	-17.5
	C	79.8	-9.3	82.3	-6.5	67.6	-9.4
	D	62	8.0	57.3	5.7	32.2	-28.3
	E	151.5	-5.7	145.5	-25.7	109.7	-18.6
	F	82	-5.1	76.9	-3.5	61.1	-4.8
	H	92.9	5.4	97.3	8.7	73.7	5.0
	I	151.4	85.8	180.9	103.9	110.2	56.3
	J	73.1	-7.6	77.0	-6.1	60.0	-11.5
	M	61.8	-25.3	75.4	-8.4	53.8	-29.0
N	100.3	5.9	103.4	6.5	81.7	3.2	

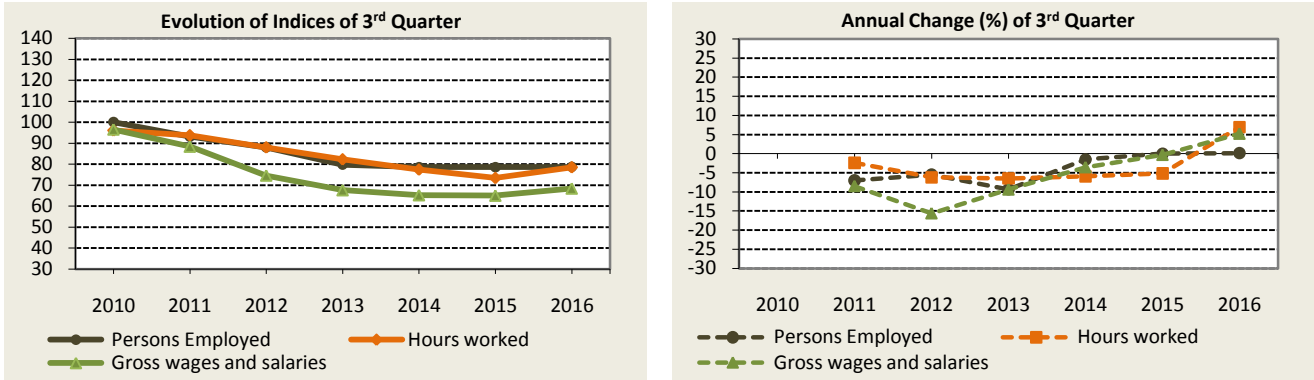
<i>Year</i>	<i>Section of Economic Activity</i>	<i>Index of Persons Employed</i>	<i>Annual rate of change (%)</i>	<i>Index of Hours worked</i>	<i>Annual rate of change (%)</i>	<i>Index of Gross wages and salaries</i>	<i>Annual rate of change (%)</i>
2014	B	87.7	2.5	77.4	0.3	54.6	-6.3
	C	78.6	-1.5	77.4	-6.0	65.2	-3.6
	D	71.3	15.0	57.8	0.9	44.0	36.6
	E	159.2	5.1	111.3	-23.5	96.0	-12.5
	F	112.5	37.2	88.5	15.1	78.0	27.7
	H	86.1	-7.3	91.0	-6.5	76.5	3.8
	I	144.6	-4.5	194.1	7.3	135.3	22.8
	J	64.7	-11.5	66.9	-13.1	52.3	-12.8
	M	57.5	-7.0	70.6	-6.4	48.5	-9.9
	N	96.7	-3.6	96.2	-7.0	82.5	1.0
2015	B	83.6	-4.7	67.4	-12.9	48.4	-11.4
	C	78.6	0.0	73.4	-5.2	65.0	-0.3
	D	61.6	-13.6	52.0	-10.0	41.0	-6.8
	E	161.4	1.4	113.1	1.6	59.4	-38.1
	F	66.5	-40.9	64.2	-27.5	54.9	-29.6
	H	109.3	26.9	105.9	16.4	82.2	7.5
	I	165.1	14.2	227.7	17.3	148.1	9.5
	J	63.7	-1.5	69.2	3.4	56.5	8.0
	M	59	2.6	73.3	3.8	52.1	7.4
	N	101.6	5.1	105.6	9.8	90.7	9.9
2016	B	89.9	7.5	79.8	18.4	58.9	21.7
	C	78.7	0.1	78.5	6.9	68.4	5.2
	D	68.5	11.2	59.6	14.6	43.7	6.6
	E	125.8	-22.1	106.5	-5.8	44.9	-24.4
	F	86.2	29.6	77.8	21.2	60.4	10.0
	H	106.9	-2.2	104.1	-1.7	80.7	-1.8
	I	164.4	-0.4	224.3	-1.5	161.4	9.0
	J	70.2	10.2	75.5	9.1	56.5	0.0
	M	57.6	-2.4	72.9	-0.5	42.8	-17.9
	N	108.3	6.6	115.1	9.0	100.3	10.6

¹Refers to ten main sections of economic activities of NACE Rev.2, namely for B-E (Mining-Quarrying and Industry), F (Construction), H-J and M-N (Other Services)

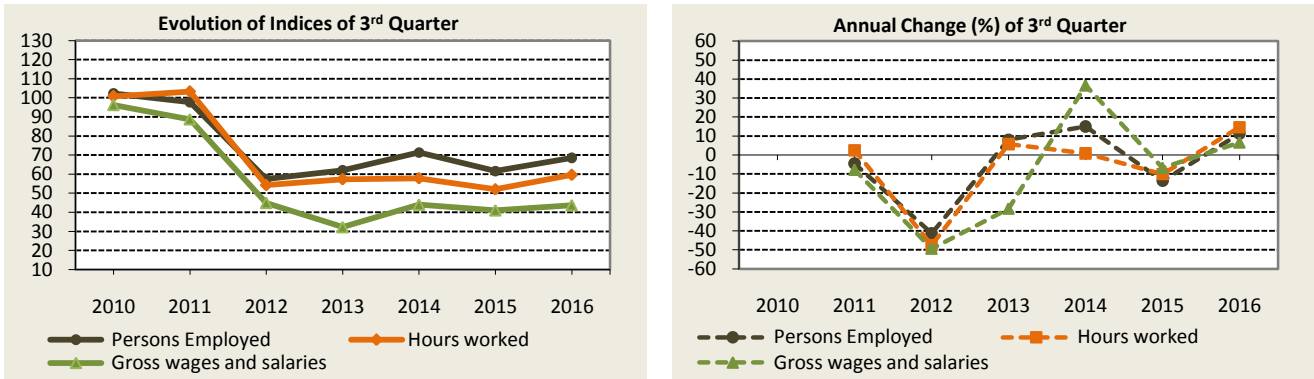
Graph 1: B-Mining and quarrying



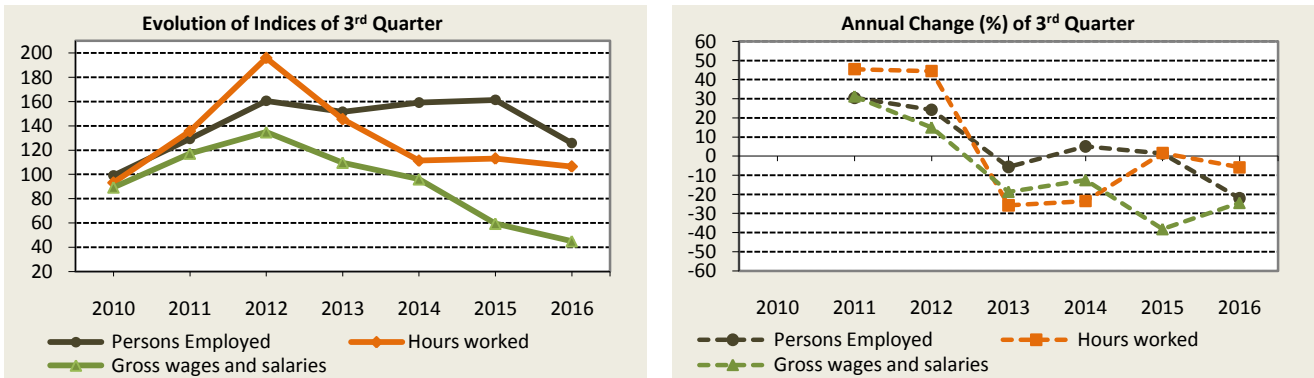
Graph 2: C-Manufacturing



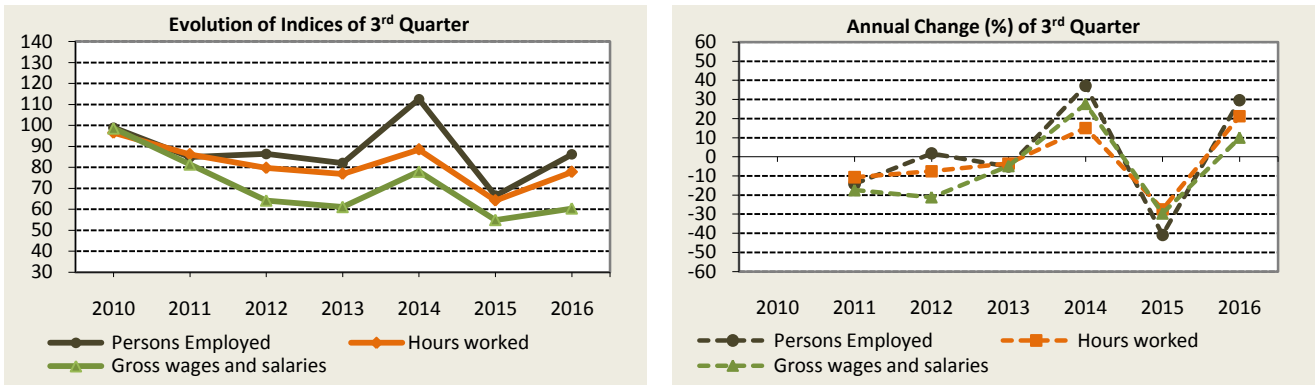
Graph 3: D-Electricity, gas, steam and air conditioning



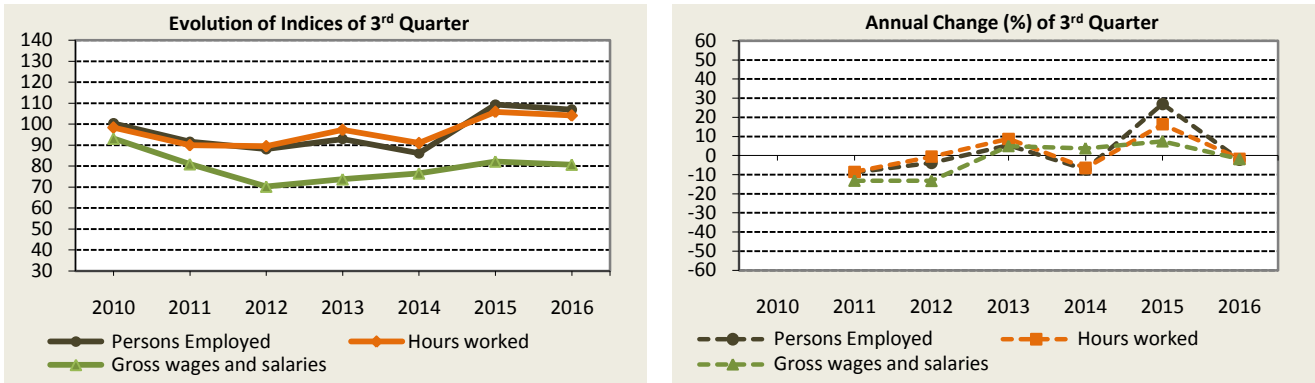
Graph 4: E-Water supply, sewerage, waste management and remediation activities



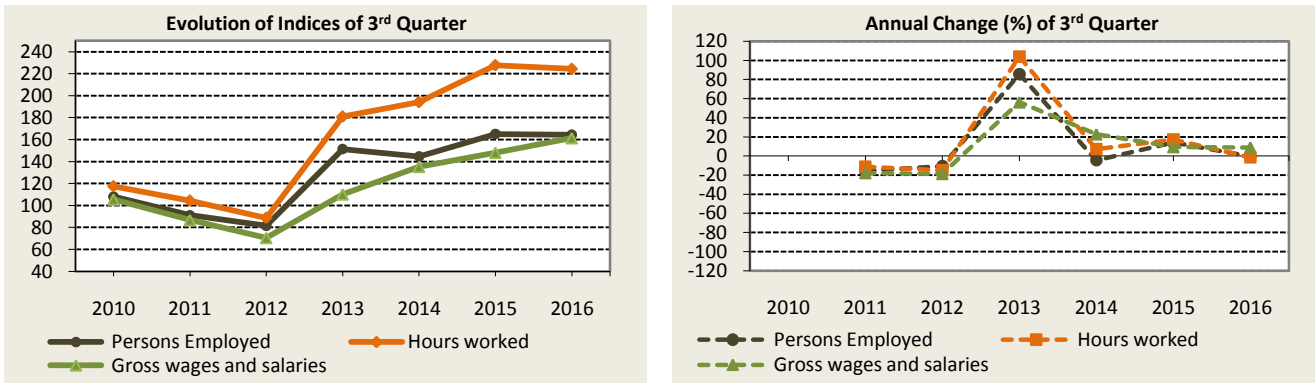
Graph 5: F-Construction



Graph 6: H-Transportation and Storage



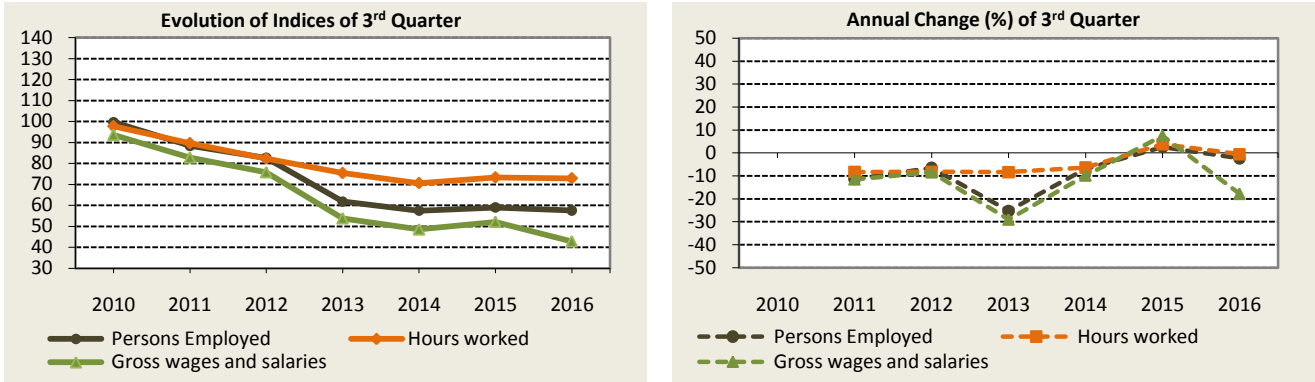
Graph 7: I-Activities Accommodation Services and Food Services



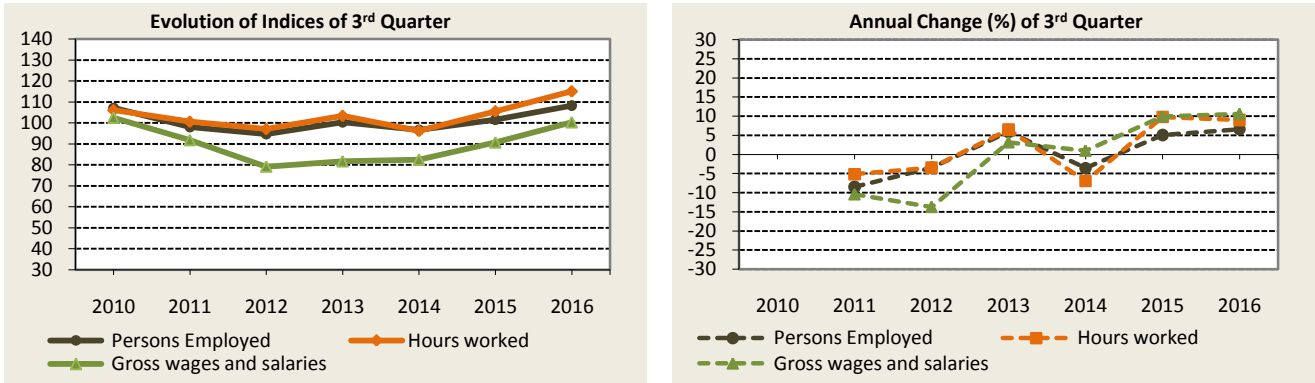
Graph 8: J-Information and Communication



Graph 9: M-Professional, scientific and technical activities



Graph 10: N-Administrative and support service activities



METHODOLOGICAL NOTES

Generally	The Short-term Indices of Persons Employed, Hours worked and Gross wages and salaries are quarterly indices concerning the Sections of economic activity B to E (Industry), F (Construction), H to J and M to N (Other Services) of the European Economic classification NACE Rev.2, having 2010 as the base year (2010=100,00).
Purpose of the index – Definitions	<p>The purpose of the indices is the description in change of Persons Employed, Hours worked and Gross wages and salaries on a quarterly base in sections of Economic activity B to E (Mining-quarrying and Industry), F (Construction), H to J and M to N (Other Services) of the European economic classification NACE Rev.2.</p> <p>As Number of Persons Employed is defined the total number of persons employed in the enterprise, irrespectively of their status (owners, partners and their family members) and the nature of their work (managers, sales persons and auxiliary staff) and irrespectively of whether they work temporarily or seasonally, full-time or part-time employment, with or without remuneration.</p> <p>As Hours Worked is defined the total number of hours actually worked in the enterprise during the reference quarter. Included are hours actually worked during normal working hours; hours worked in addition to those, with or without remuneration, time that is spent at the place of work on tasks such as preparing the site and time corresponding to short periods of rest at the work place. This variable excludes hours paid but not actually worked such as for annual leave, holidays and sickness leave.</p> <p>As Wages and salaries is defined the total remuneration, in cash or in kind, payable to all persons counted on the payroll, in return for work done.</p>
Legal Framework	The Council Regulation (EC) No.1165/98 concerning short-term statistics and on Council Regulation (EC) No.1503/2006 as regards definitions of variables, list of variables and frequency of data compilation.
Reference Period	Quarter
Statistical Classification	NACE Rev. 2 classification of economic activities, is implementing the Regulation (EC) No.1893/2006 of the European Parliament and of the Council
Geographical coverage	Greece, total.

Sections of economic activity	NACE Rev.2	Description
	B	Mining and quarrying
	C	Manufacturing
	D	Electricity, gas, steam and air conditioning
	E	Water supply, sewerage, waste management and remediation activities
	F	Construction
	H	Transportation and Storage
	I	Accommodation and Food Service Activities
	J	Information and Communication
	M	Professional, scientific and technical activities
	N	Administrative and support service activities