



HELLENIC REPUBLIC

HELLENIC STATISTICAL AUTHORITY

Piraeus, 18 November 2016

PRESS RELEASE

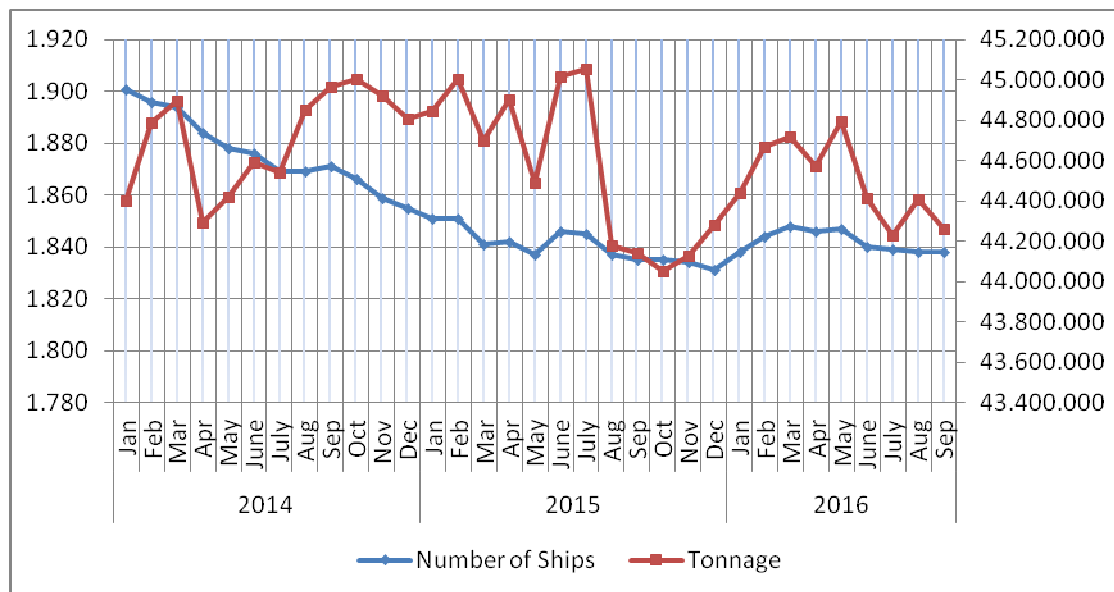
GREEK MERCHANT FLEET: SEPTEMBER 2016

(Provisional data)

The Hellenic Statistical Authority (ELSTAT) announces data on the Greek Merchant Fleet (for vessels of 100 GRT¹) for September 2016. Particularly:

- The Greek Merchant Fleet increased by 0.2% in September 2016 compared with September 2015, while it recorded a decline of 1.9% in September 2015 compared with September 2014 (Table 1).
- The gross tonnage of the Greek Merchant Fleet, for vessels of 100 GRT and over, recorded an increase of 0.3% in September 2016 compared with September 2015, while a decline of 1.8% was observed in September 2015 compared to September 2014 (Table 1).

**Graph 1. Greek Merchant ships of 100 GRT and over:
January 2014- September 2016**



Information:

Division of Statistics on Trade and Services

Section of Shipping Statistics

Papandreou Konstantinos

Tel : 213 135 2187

Fax: 213 135 3059

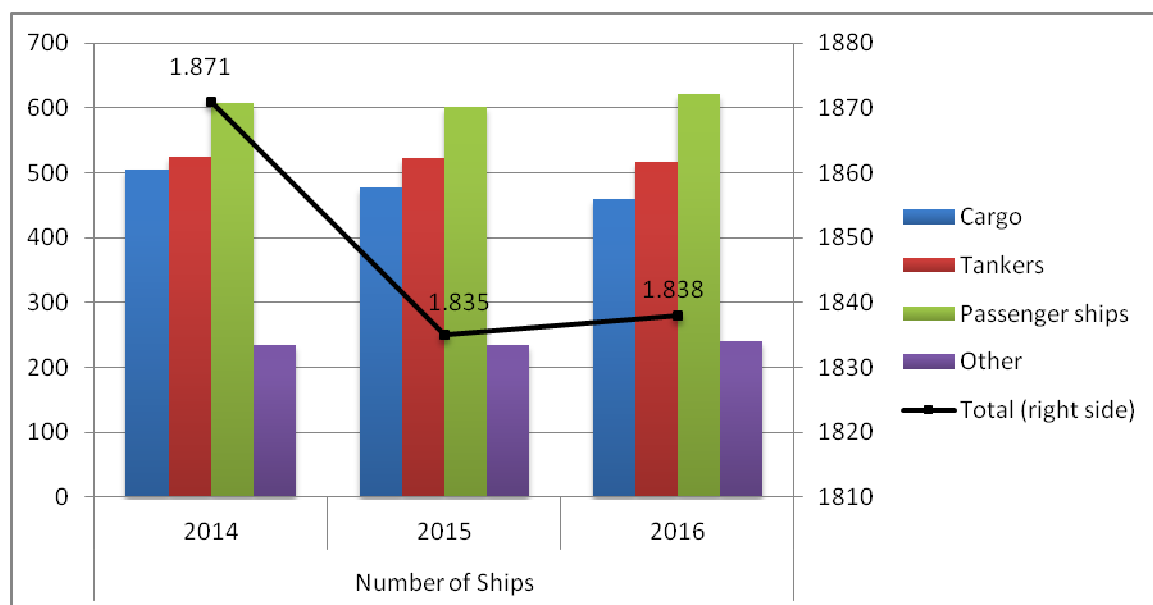
email: k.papandreou@statistics.gr

¹ GRT: Gross Tonnage

Table 1. Number and tonnage of Greek Merchant ships of 100 GRT and over, September 2014-2016

September										
	2014		2015		Change % (2015-2014)		2016		Change % (2016-2015)	
	Number of ships	Tonnage (GRT)	Number of ships	Tonnage (GRT)	Number of ships	Tonnage (GRT)	Number of ships	Tonnage (GRT)	Number of ships	Tonnage (GRT)
Cargo	505	16.449.178	478	15.186.696	-5,3%	-7,7%	459	14.940.453	-4,0%	-1,6%
Tankers	524	27.071.494	522	27.547.484	-0,4%	1,8%	516	27.880.349	-1,1%	1,2%
Passenger ships	608	1.375.048	601	1.335.464	-1,2%	-2,9%	622	1.358.024	3,5%	1,7%
Other	234	68.671	234	68.675	0,0%	0,0%	241	84.301	3,0%	22,8%
Total:	1.871	44.964.391	1.835	44.138.319	-1,9%	-1,8%	1.838	44.263.127	0,2%	0,3%

Graph 2a: Number of Greek Merchant ships of 100 GRT and over September 2014-2016



Graph 2b: Tonnage of Greek Merchant Ships of 100 GRT and over, September 2014-2016

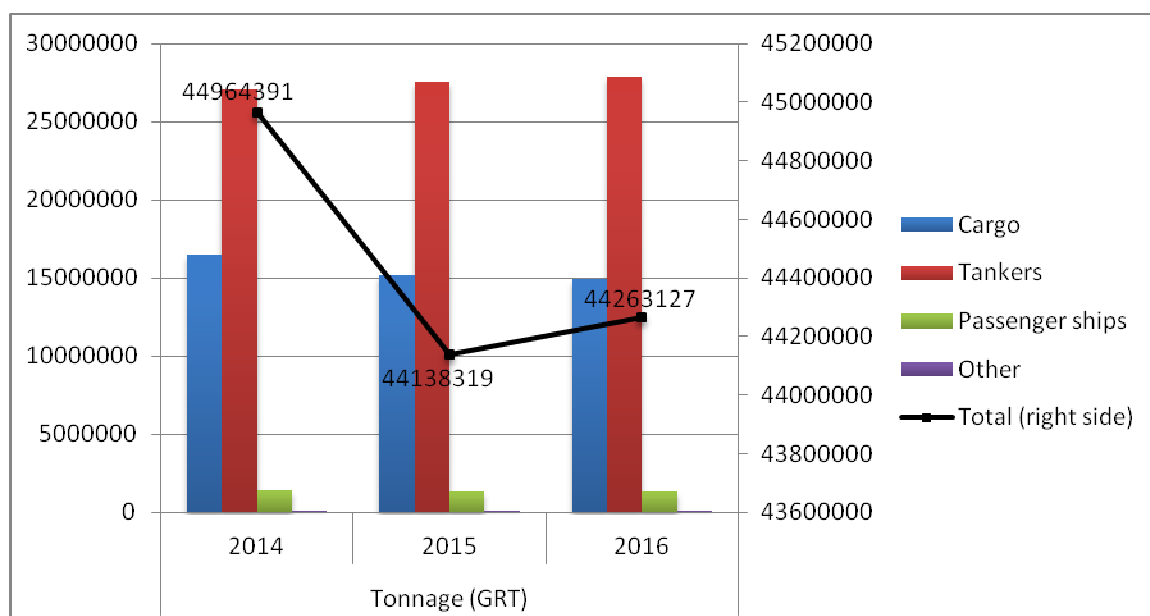


Table 2. Distribution of the Greek Merchant ships of 100 GRT and over by tonnage groups, September 2014 - 2016

September										
	2014		2015		Change % (2015-2014)		2016		Change % (2016-2015)	
	Number of Ships	Tonnage (GRT)	Number of Ships	Tonnage (GRT)	Number of Ships	Tonnage (GRT)	Number of Ships	Tonnage (GRT)	Number of Ships	Tonnage (GRT)
[100-500)	737	186.209	727	185.227	-1,4%	-0,5%	738	187.389	1,5%	1,2%
[500-3.000)	331	417.917	328	409.454	-0,9%	-2,0%	338	418.567	3,0%	2,2%
[3.000-7.000)	70	316.800	71	317.544	1,4%	0,2%	73	324.475	2,8%	2,2%
[7.000-10.000)	24	204.158	23	195.134	-4,2%	-4,4%	21	177.795	-8,7%	-8,9%
[10.000-20.000)	42	640.231	44	661.451	4,8%	3,3%	48	712.877	9,1%	7,8%
[20.000-30.000)	95	2.576.399	86	2.314.909	-9,5%	-10,1%	81	2.157.960	-5,8%	-6,8%
[30.000+	572	40.622.677	556	40.054.600	-2,8%	-1,4%	539	40.284.064	-3,1%	0,6%
Σύνολο:	1.871	44.964.391	1.835	44.138.319	-1,9%	-1,8%	1.838	44.263.127	0,2%	0,3%

Graph 3: Distribution of Greek Merchant ships of 100 GRT and over by tonnage groups, September 2014- 2016

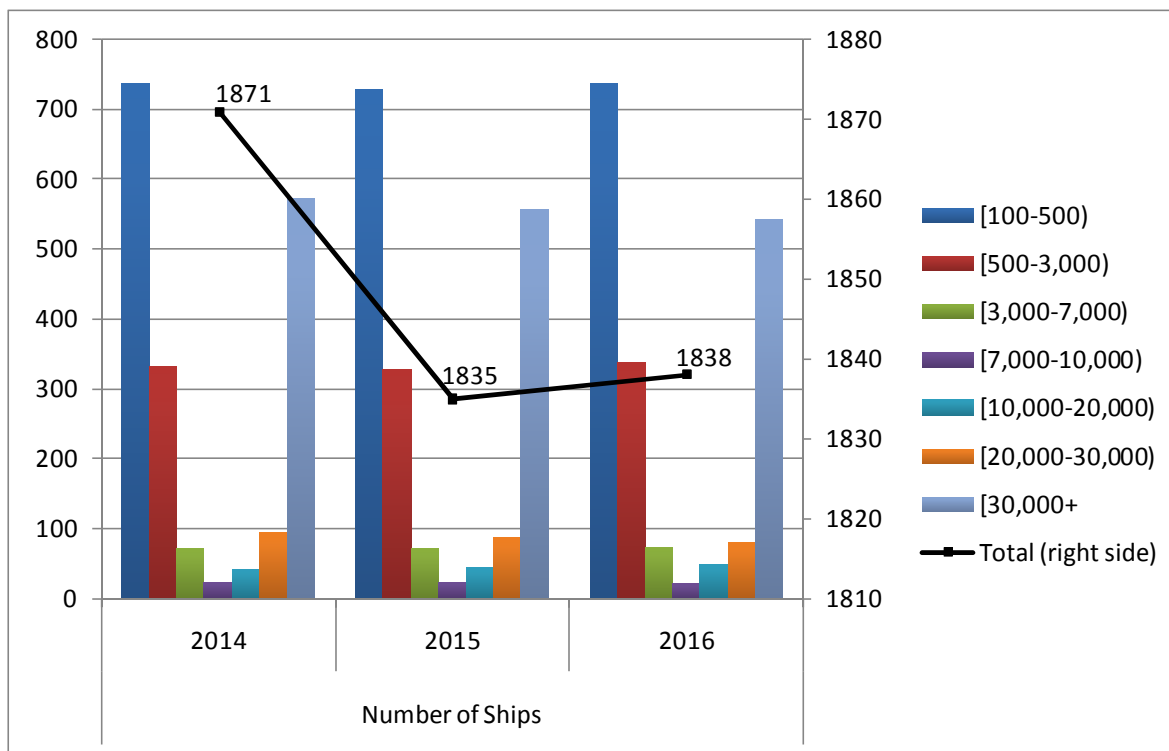
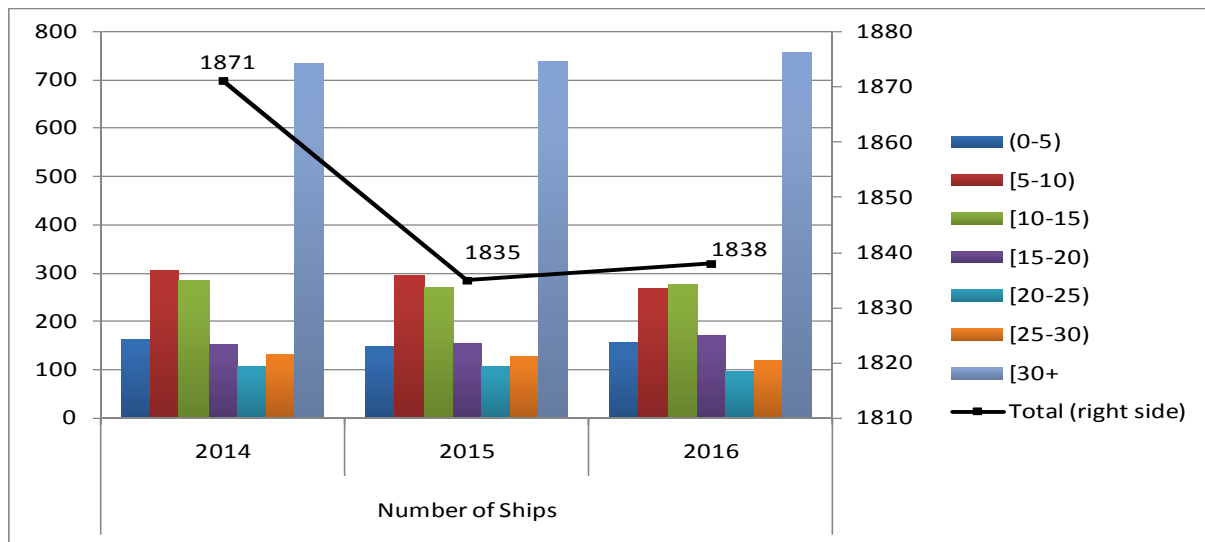


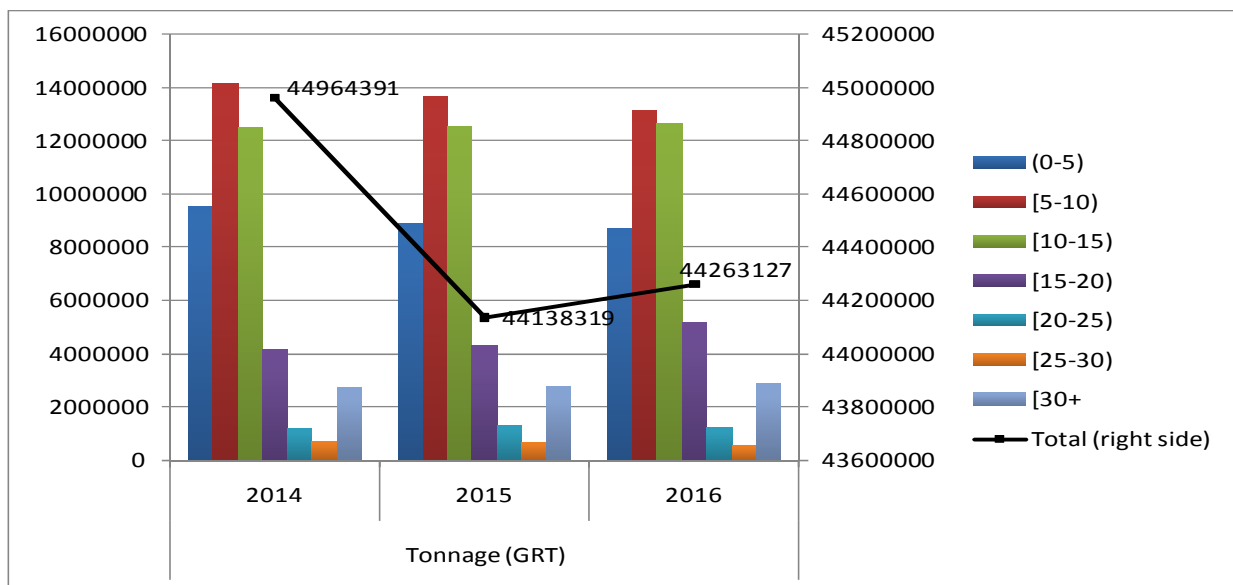
Table 3. Distribution of Greek Merchant ships of 100 GRT and over by age groups, September 2014- 2016

September										
	2014		2015		Change % (2015-2014)		2016		Change % (2016-2015)	
	Number of Ships	Tonnage (GRT)	Number of Ships	Tonnage (GRT)	Number of Ships	Tonnage (GRT)	Number of Ships	Tonnage (GRT)	Number of Ships	Tonnage (GRT)
(0-5)	161	9.540.516	149	8.905.454	-7,5%	-6,7%	156	8.676.640	4,7%	-2,6%
[5-10]	305	14.167.380	293	13.670.964	-3,9%	-3,5%	267	13.122.101	-8,9%	-4,0%
[10-15]	284	12.494.730	270	12.532.076	-4,9%	0,3%	276	12.619.143	2,2%	0,7%
[15-20]	152	4.165.533	155	4.284.813	2,0%	2,9%	169	5.200.244	9,0%	21,4%
[20-25]	107	1.175.810	106	1.316.331	-0,9%	12,0%	95	1.225.457	-10,4%	-6,9%
[25-30]	129	695.962	126	638.088	-2,3%	-8,3%	120	534.332	-4,8%	-16,3%
[30+]	733	2.724.460	736	2.790.593	0,4%	2,4%	755	2.885.210	2,6%	3,4%
Σύνολο:	1.871	44.964.391	1.835	44.138.319	-1,9%	-1,8%	1.838	44.263.127	0,2%	0,3%

Graph 4a. Distribution of Greek Merchant ships 100 GRT and over by age groups, September 2014- 2016



Graph 4b. Tonnage of Greek Merchant ships of 100 GRT and over by age groups, September 2014- 2016



METHODOLOGICAL NOTES

- Greek Merchant Fleet Survey** The Survey on the Greek Merchant Fleet is conducted on a monthly basis since 1964 without any major methodological changes ever since. The purpose of the survey is to fully record statistical data on the number and basic characteristics of the Greek merchant ships, thus depicting the evolution over the course of time of the Greek merchant fleet.
- Legal Framework** The survey is conducted in compliance with the joint Ministerial Decision (No 6792/G-81/11-4-97), signed by the Minister of National Economy and the Minister of Mercantile Marine.
- Reference Period** The results of the survey refer to the end of September 2016.
- Coverage** The survey covers all domestic Port Authorities, as well as Greek Consular Port Authorities abroad, which keep ship registers. These Authorities have to send a report on a monthly basis to the Hellenic Statistical Authority (ELSTAT) pertaining to the changes in the Greek merchant ships registered in their ship registers.
- Definitions**
- Merchant ship:** Seagoing self-propelled vessel, at least of 10 GRT, designed for the carriage of goods, transport of passengers, for fishing, towing or specially fitted out for other commercial maritime activities.
- Greek merchant fleet:** The total number of the merchant ships registered in Greece, which belong to natural or legal persons residing on the Greek territory. The Greek flag carried by these ships means that all their maritime activities (subsidies for ship building, cargo limitations and other tax provisions) are governed by commercial and economic rules which are laid down by the respective Greek authorities.
- Gross Register Tonnage (GRT):** Refers to the spaces within the hull and of the enclosed spaces above the deck which are available for carrying goods, food, passengers and crew. GRT is equal to the volume of 100 cubic feet or 2.83 m³.
- Net Register Tonnage (NRT):** It is derived from the gross tonnage by deducting allowances in respect of spaces used for the crew, navigating and propelling machinery, fuel and water ballasts, and other spaces not used for passengers or cargo.
- Age of ship:** indicated by the year of original construction of the hull or that of the hull containing the engine room.
- Methodology** It is an exhaustive survey conducted by all domestic Port Authorities and Greek Consular Port Authorities abroad, which report to ELSTAT, on a monthly basis, on changes in the ships pertaining to: a) new registrations of ships in the ship registers, b) change in the name of a ship, c) change of ownership, d) transfers to or from a different port, e) deletion of a ship from a ship register, f) final measurement – remeasurement of ships, g) replacement of the ship's engine.
- All these data, after being fully processed, are used to update, through a specially designed software application, the Official Register of Greek Merchant Ships. This Register is used for the production of monthly and annual statistical results.
- References** Further information (tables, charts) concerning the Survey on the Greek Merchant Fleet can be found on the webpage of ELSTAT (www.statistics.gr), under the link: < Industry, Trade, Services, Transport > Transport >Shipping > Greek Merchant Fleet of 100 GRT and over>>.