

PRESS RELEASE

Issuing of Motor Vehicle Circulation Licences: October 2016

The Hellenic Statistical Authority announces that in October 2016, 9.479 road motor cars (both new and used from abroad) were put into circulation for the first time, recording a 20,0% increase compared with the corresponding month of 2015 when the number of road motor cars was 7.897. In October 2015, a 13,8% decrease had been observed in comparison with the corresponding month of 2014 (Table1, Chart1). A total number of 5.485 new cars were put into circulation in October 2016 compared with 5.440 in October 2015, recording a 0,8% increase.

The new motorcycles (over 50cc) that were put into circulation for the first time in October 2016 amounted to 2.866, against 2.543 in 2015, thus recording a 12,7% increase. In October 2015, a 6,1% decrease had been observed in comparison with the corresponding month of 2014 (Table 1, Chart1). Out of the above motorcycles 2.683 were new, while the corresponding figure in October 2015 was 2.381, recording a 12,7% increase.

During the period January - October 2016, 110.775 road motor cars (both new and used from abroad) were put into circulation for the first time, representing a 13,3% increase compared to the corresponding period of 2015 when the number of road motor cars was 97.788. During the period January - October 2015 an increase of 14,0% had been observed in comparison with the corresponding period of 2014 (Table2, Charts 2,3). Out of the above number of road motor cars that were put into circulation, from January to October 2016, 73.263 were new, while the corresponding number during the respective period of 2015 was 67.676, recording an 8,3% increase.

During the period January - October 2016 the circulation of new motorcycles (over 50cc) amounted to 35.177 against 31.377 in 2015, thus representing a 12,1% increase. An increase of 1,4% had been observed during the period January - October 2015 in comparison with the corresponding period of 2014 (Table 2, Charts 2,3). A total number of 32.829 new motorcycles were put into circulation, from January to October 2016, compared with 29.488 during the corresponding period of 2015, recording a 11,3% increase.

Information:

Division of Statistics on Trade and Services
Section of Transport, Communications and Mass Media

Konstantinos Menexes

Telephon : (0030) 213 1352500

FAX : (0030) 213 1352496

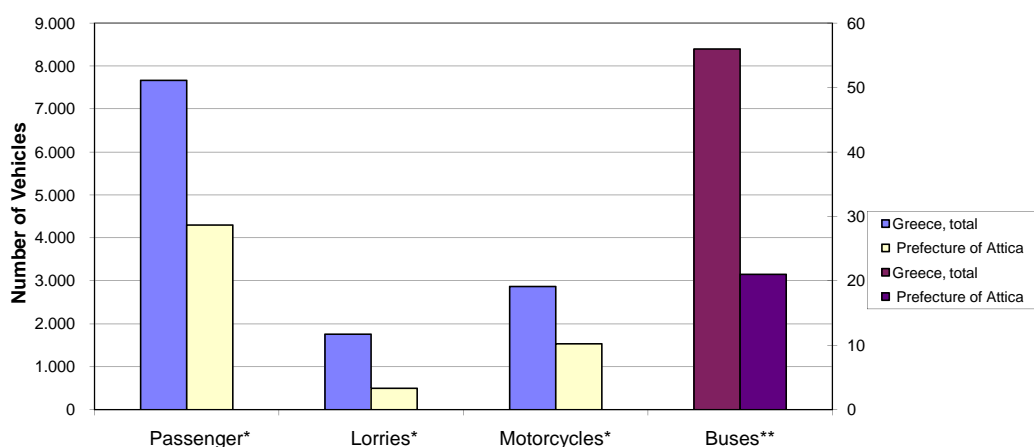
e-mail : k.menexes@statistics.gr

**Table 1. Road motor vehicles, both new and used, put into circulation for the first time in Greece:
October 2014 - 2016**

Category of Road Motor Vehicles	October						Change (%)			
	2016		2015		2014		2016/2015		2015/2014	
	Total	Used	Total	Used	Total	Used	Total	Used	Total	Used
Greece, total										
Road Motor Vehicles, total	12.345	4.177	10.440	2.619	11.866	2.737	18,2	59,5	-12,0	-4,3
1. Road motor cars	9.479	3.994	7.897	2.457	9.158	2.599	20,0	62,6	-13,8	-5,5
Passenger Cars	7.668	2.684	6.244	1.304	7.439	1.439	22,8	105,8	-16,1	-9,4
Buses	56	45	51	47	60	55	9,8	-4,3	-15,0	-14,5
Lorries	1.755	1.265	1.602	1.106	1.659	1.105	9,6	14,4	-3,4	0,1
2. Motorcycles > 50 cc	2.866	183	2.543	162	2.708	138	12,7	13,0	-6,1	17,4
Prefecture of Attica										
Road Motor Vehicles, total	6.358	1.313	5.484	743	6.669	773	15,9	76,7	-17,8	-3,9
1. Road motor cars	4.822	1.288	4.240	718	5.265	736	13,7	79,4	-19,5	-2,4
Passenger Cars	4.299	1.007	3.821	491	4.746	515	12,5	105,1	-19,5	-4,7
Buses	21	19	19	18	17	14	10,5	5,6	11,8	28,6
Lorries	502	262	400	209	502	207	25,5	25,4	-20,3	1,0
2. Motorcycles > 50 cc	1.536	25	1.244	25	1.404	37	23,5	0,0	-11,4	-32,4

Category of Road Motor Vehicles	Change (%)					
	Average Nov. 2015 - Oct. 2016		Average Nov. 2014 - Oct. 2015		Average Nov. 2015 - Oct. 2016 / Average Nov. 2014 - Oct. 2015	
	Total	Used	Total	Used	Total	Used
Greece, total						
Road Motor Vehicles, total	14.131	3.724	12.364	3.027	14,3	23,0
1. Road motor cars	10.764	3.509	9.531	2.856	12,9	22,9
Passenger Cars	8.927	2.193	7.872	1.690	13,4	29,8
Buses	81	65	58	48	39,7	35,4
Lorries	1.756	1.251	1.601	1.118	9,7	11,9
2. Motorcycles > 50 cc	3.367	215	2.833	171	18,8	25,7

Graph 1. New registrations of motor vehicles: October 2016



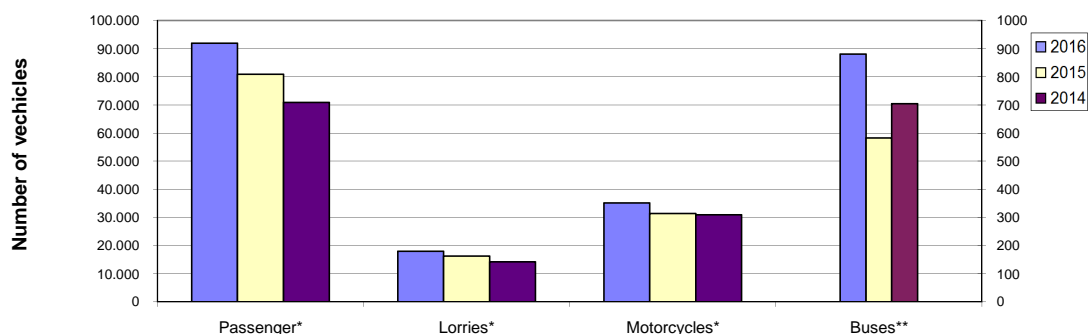
* For Passenger motor vehicles, Lorries and Motorcycles see the left axis scale

** For Buses see the right axis scale

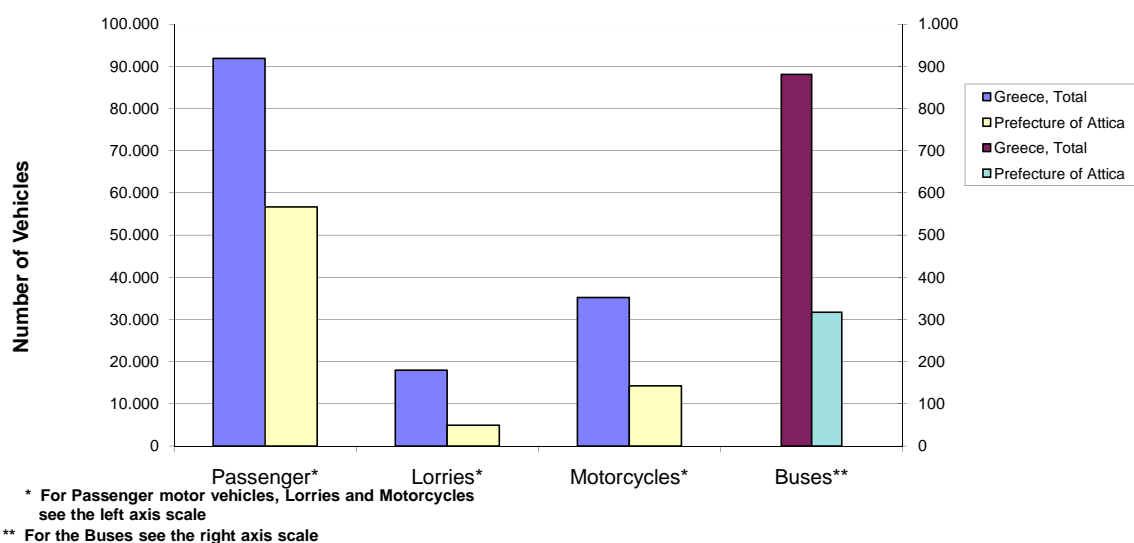
**Table 2. Road motor vehicles, both new and used, put into circulation for the first time in Greece:
Jan. - Oct. 2014 - 2016**

Category of Road Motor Vehicles	January - October						Change (%)			
	2016		2015		2014		2016/2015		2015/2014	
	Total	Used	Total	Used	Total	Used	Total	Used	Total	Used
Greece, total										
Road Motor Vehicles, total	145.952	39.860	129.165	32.001	116.735	23.554	13,0	24,6	10,6	35,9
1. Road motor cars	110.775	37.512	97.788	30.112	85.776	22.064	13,3	24,6	14,0	36,5
Passenger Cars	91.876	23.732	80.906	18.072	70.882	11.430	13,6	31,3	14,1	58,1
Buses	881	706	583	476	704	546	51,1	48,3	-17,2	-12,8
Lorries	18.018	13.074	16.299	11.564	14.190	10.088	10,5	13,1	14,9	14,6
2. Motorcycles > 50 cc	35.177	2.348	31.377	1.889	30.959	1.490	12,1	24,3	1,4	26,8
Prefecture of Attica										
Road Motor Vehicles, total	76.212	11.611	64.321	8.487	58.414	5.803	18,5	36,8	10,1	46,3
1. Road motor cars	61.948	11.360	52.080	8.176	46.184	5.555	18,9	38,9	12,8	47,2
Passenger Cars	56.700	8.659	47.630	6.110	42.186	3.671	19,0	41,7	12,9	66,4
Buses	317	241	221	174	272	183	43,4	38,5	-18,8	-4,9
Lorries	4.931	2.460	4.229	1.892	3.726	1.701	16,6	30,0	13,5	11,2
2. Motorcycles > 50 cc	14.264	251	12.241	311	12.230	248	16,5	-19,3	0,1	25,4

**Graph 2. New motor vehicle circulation licences: comparative data
January - October 2014, 2015, 2016**

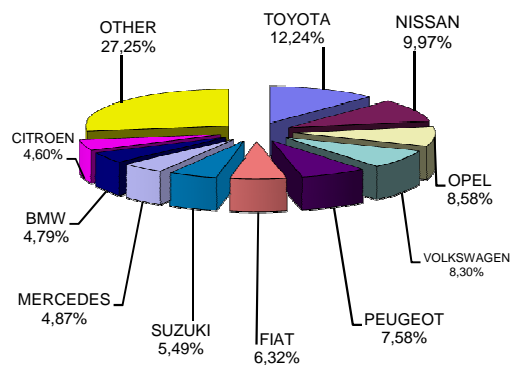
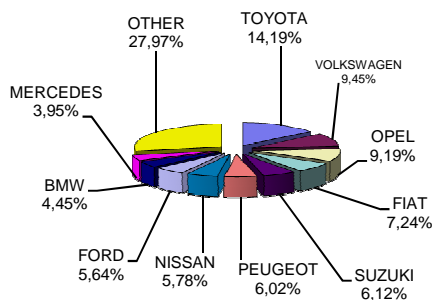


Graph 3. New registrations of motor vehicles: January - October 2016



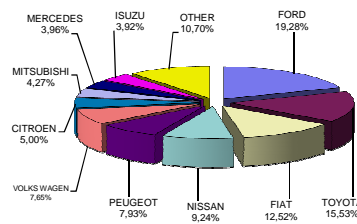
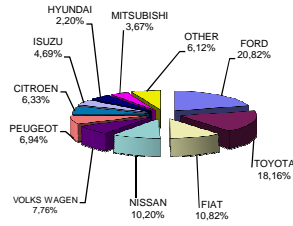
**Table 3. Sales of new and used passenger cars by make:
October and January - October 2016**

Makes	Passenger cars			
	October		Jan. - Oct.	
	new	used	new	used
ADRIA	-	-	-	1
ALFA LANCIA	-	-	-	1
ALFA ROMEO	42	12	428	163
ALPINA	-	-	-	1
AUDI	143	30	2.326	471
AUSTIN	-	-	-	3
BEACH-BAGGY	-	2	-	3
BENTLEY	-	-	-	2
BMW	222	48	3.266	562
CADILLAC	-	1	-	1
CHEVROLET	-	9	-	36
CHRYSLER	-	1	-	3
CITROEN	192	116	3.136	1.114
DACIA	45	8	548	81
DAEWOO	-	-	-	17
DAIHATSU	-	17	-	94
DETHLEFFS	-	3	1	22
DODGE	-	-	-	3
FERRARI	-	1	-	6
FIAT	361	156	4.310	1.570
FIAT DUCATO Z.MANTOS	1	-	1	-
FIAT-IVECO	-	-	-	2
FISSORE-FIAT	-	-	-	1
FORD	281	237	3.056	1.913
GM KOREA (CHEVROLET)	-	6	130	92
GRUAU LAVAL	1	-	1	-
HONDA	40	27	501	167
HUMMER	-	-	-	2
HYUNDAI	169	58	927	418
JAGUAR	6	1	20	15
JEEP	67	3	741	46
KIA	56	27	773	142
LADA	-	-	-	2
LANCIA	2	12	21	91
LAND ROVER	5	10	63	184
LEXUS	7	1	37	26
LOTUS	-	-	-	1
MAN	-	-	-	1
MASERATI	-	-	1	1
MAZDA	1	22	80	176
MERCEDES	197	114	3.322	1.506
MERCEDES Z.MANTOS	-	-	95	-
MG	-	-	-	2
MG ROVER	-	-	-	1
MINI	125	23	1.336	266
MITSUBISHI	12	26	129	188
NISSAN	288	102	6.791	976
OPEL	458	417	5.850	3.650
PEUGEOT	300	175	5.163	1.208
PORSCHE	5	3	22	107
RENAULT	173	128	2.578	990
RILEY	-	-	-	2
SAAB	-	-	-	12
SEA / MOBILVETT	-	1	-	14
SEA, ELNAGH, SUNROLLE	-	-	-	1
SEAT	80	27	1.673	133
SKODA	73	55	1.151	437
SMART	59	154	605	1.283
SSANGYONG	13	-	109	1
STEYER	-	-	-	1
SUBARU	2	1	35	15
SUZUKI	305	71	3.741	622
TATA	-	-	-	2
TESLA MOTORS	1	-	3	1
TOYOTA	707	456	8.340	3.470
TRIGANO	-	-	-	1
VOLKSWAGEN	471	114	5.653	1.227
VOLKSWAGEN Z.MANTOS	-	-	-	1
VOLVO	74	9	1.180	181
WILLYS	-	-	-	1
TOTAL	4.984	2.684	68.144	23.732



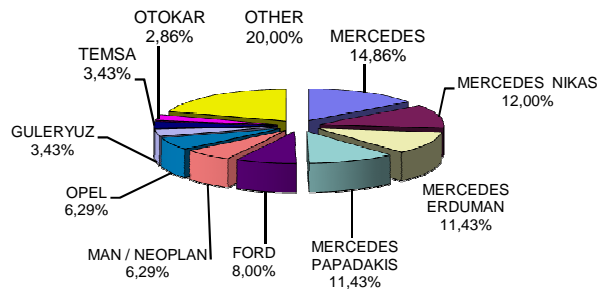
**Table 4. Sales of new and used lorries by make:
October and January - October 2016**

Makes	Lorries			
	October		Jan. - Oct.	
	new	used	new	used
BMW	-	-	-	1
CADILLAC	-	-	-	1
CHEVROLET	-	-	-	3
CHRYSLER	-	-	-	2
CHRYSLER (DODGE)	-	-	-	1
CITROEN	31	30	247	284
DACIA	-	1	2	17
DAF	1	19	11	288
DAF A. KAOUSSIS SA	-	-	1	-
DAF STATHIS	-	-	1	-
DAF TECMEG A.E.B.E.	-	-	2	-
DAF TOUMBAS D. & Co L.P.	-	-	3	-
DAF ΗΦΑΙΣΤΟΣ ΣΤΕΦΑΝΟΣ	-	-	2	-
DAIHATSU	-	-	-	8
DODGE	-	-	-	1
FIAT	53	180	619	1.609
FIAT STATHIS	-	-	1	-
FIAT-IVECO	-	4	-	57
FORD	102	159	953	1.561
FORD AVF HELLAS	-	-	2	-
FORD Α&Ι ΔΕΡΒΙΣΙΗΣ	-	-	1	-
FORD CONTRUCK MECHANICA	-	-	1	-
GENERAL MOTORS	-	1	-	3
GRECAV SPA	-	-	-	1
HONDA	-	-	-	1
HUMMER	-	-	-	1
HYUNDAI	-	7	-	54
ISUZU	23	13	194	158
ISUZU ΤΑΞΙΑΡΧΟΥ	-	-	1	-
ISUZU A. KAOUSSIS SA	-	-	5	-
IVECO	2	12	12	130
IVECO A. KAOUSSIS SA	-	-	8	-
IVECO CENTIGON	-	-	8	-
IVECO CONTRUCK MECHANICA	-	-	1	-
IVECO KOSKERIDIS	-	-	5	-
IVECO MAGIRUS	-	1	-	13
IVECO SMYRLIADIS	-	-	2	-
IVECO ΑΝΔΡΕΑΣ ΚΑΡΚΑΓΓΕΛΗΣ	-	-	1	-
IVECO ΗΦΑΙΣΤΟΣ ΣΤΕΦΑΝΟΣ	3	-	14	-
IZ	-	-	-	1
JEEP	-	-	-	4
KASSBOHRER	-	-	1	-
KIA	-	1	-	10
LAND ROVER	-	-	-	10
MAGIRUS	-	-	-	1
MAHINDRA	-	-	2	1
MAN	-	32	9	455
MAN A. KAOUSSIS SA	-	-	8	-
MAN SMYRLIADIS	-	-	3	-
MAN ΕΥΣΤΑΘΙΟΣ ΖΥΓΟΥΡΗΣ & ΣΙΑ ΕΒ	1	-	5	-
MAN-VOLKS WAGEN	-	-	-	1
MAZDA	-	28	1	323
MERCEDES	22	237	196	2.576
MERCEDES A. KAOUSSIS SA	1	-	23	-
MERCEDES AVF HELLAS	-	-	1	-
MERCEDES DYNA TRAILERS S.A.	-	-	14	-
MERCEDES ERMICON	-	-	1	-
MERCEDES MEILLER	-	-	8	-
MERCEDES NIKAS	-	-	1	-
MERCEDES PAPADOPOULOS TANK	-	-	1	-
MERCEDES SMYRLIADIS	-	-	6	-
MERCEDES STATHIS	-	-	10	-
MERCEDES TRUCK NET	-	-	2	-
MERCEDES XATZOGLOY	-	-	1	-
MERCEDES ZANELLI FURGONATURE	-	-	1	-
MERCEDES Α&Ι ΔΕΡΒΙΣΙΗΣ	-	-	1	-
MERCEDES Ζ. ΜΑΝΤΟΣ	-	-	1	-
MERCEDES ΗΦΑΙΣΤΟΣ ΣΤΕΦΑΝΟΣ	-	-	5	-
MERCEDES ΤΑΞΙΑΡΧΟΥ	-	-	1	-
MINI	-	-	-	1
MINI	-	-	-	1
MITSUBISHI	18	75	211	638
MITSUBISHI DYNA TRAILERS	-	-	1	-
MITSUBISHI KAPAMANΗΣ & ΣΙΑ Ο.Ε	-	-	1	-
NISSAN	50	128	457	1.128
NISSAN A. KAOUSSIS SA	-	-	3	-
NISSAN DYNA TRAILERS S.A.	-	-	1	-
NISSAN JET ENGINEERING	-	-	1	-
NISSAN SMYRLIADIS	-	-	5	-
NISSAN ΕΥΣΤΑΘΙΟΣ ΖΥΓΟΥΡΗΣ & ΣΙΑ	-	-	1	-
NISSAN ΤΑΞΙΑΡΧΟΥ	-	-	1	-
OPEL	13	65	182	735
PEUGEOT	34	30	392	266
PFAU	-	1	-	4
PIAGGIO	1	-	14	22
PIAGGIO TOUMBAS	-	-	1	-
PIAGGIO & C SPA A. KAOUSSIS SA	-	-	1	-
RENAULT	4	76	78	732
ROMEX	-	-	1	-
ROVER	-	-	-	3
SCANIA	1	22	11	294
SCANIA INOX STEEL TECHNICAL	-	-	1	-
SCANIA DYNA TRAILERS S.A.	-	-	1	-
SEAT	-	1	1	11
SIMCA	-	-	-	1
SKODA	-	7	-	78
SMYRLIADIS	-	-	-	1
SPIAGGIO & C SPA A. KAOUSSIS	-	-	1	-
SSANGYONG	1	-	4	9
STEYER	-	-	-	7
SUZUKI	-	1	-	10
TATA	-	-	-	4
TOYOTA	89	50	768	485
TOYOTA SGOURIS	-	-	-	1
VOLKS WAGEN	38	66	378	634
VOLVO	2	38	29	433
WARTBURG	-	-	-	2
TOTAL	490	1.265	4.944	13.074



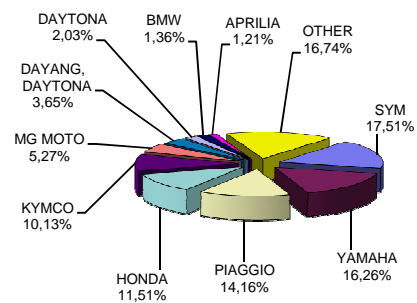
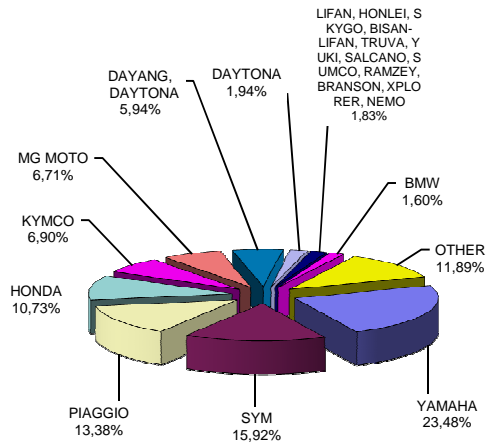
**Table 5. Sales of new and used buses by make:
October and January - October 2016**

Makes	Buses			
	October		Jan. - Oct.	
	new	used	new	used
AYATS	-	-	-	2
B.M.C.	-	-	-	1
BOVA	-	1	-	41
DAF	-	-	-	4
EOS-COACH	-	-	-	1
EOBUS	-	-	-	29
FIAT	-	-	-	1
FIAT-IVECO	-	-	-	7
FORD	-	3	14	14
G. AUWARTER	-	-	-	4
GULERYUZ	-	-	6	-
HIGER (SCANIA)	-	-	3	-
IRISBUS	-	-	-	7
IRIZAR	-	-	2	-
ISUZU	-	-	4	-
ISUZU, ANADOLU ISUZU, T	-	-	2	-
IVECO	-	-	3	5
JONCKHEERE	-	-	-	1
KARSAN	-	-	2	-
KASSBOHRER	-	-	-	1
MAN	-	3	-	36
MAN / NEOPLAN	-	-	11	6
MAN/NEOPLAN	4	-	4	-
MERCEDES	2	25	26	309
MERCEDES CENTO BUS	-	-	3	-
MERCEDES ERDUMAN	1	-	20	-
MERCEDES GIANNOPOYL	1	-	4	1
MERCEDES NIKAS	-	-	21	-
MERCEDES PAPADAKIS	-	-	20	-
NEOPLAN	-	2	-	27
OPEL	-	-	11	-
OTOKAR	1	-	5	2
PEUGEOT	-	2	-	25
RENAULT	-	1	-	4
SCANIA	-	1	-	36
SCANIA HIGER	1	-	1	-
SETRA	-	3	5	43
SIN MARCA	-	-	-	3
TEMSA	-	1	6	51
VAN HOOL	-	-	-	5
VDL	1	-	1	-
VISION	-	-	-	1
VOLKSWAGEN	-	3	1	21
VOLVO	-	-	-	15
XIAMEN KING LONG	-	-	-	3
TOTAL	11	45	175	706



**Table 6. Sales of new and used motorcycles by make or manufacturer:
October and January - October 2016**

Makes	Motorcycles			
	October		Jan. - Oct.	
	new	used	new	used
ACCESS, GOES	-	-	45	1
AEON MOTOR	-	-	74	1
APRILIA	21	10	397	90
APRILIA, PIAGGIO, GILERA	7	-	72	15
ARCTIC CAT	-	-	6	-
BASHAN, MONDIAL, YUKI, APAC	2	-	62	-
BETA	1	-	24	3
BMW	43	2	445	36
BOMBARDIER RECREATIONAL P	2	-	36	1
CFMOTO	6	-	141	1
DAELIM	11	-	125	3
DAYANG, DAYTONA	151	1	1.252	6
DAYTONA	52	-	668	1
DERBI	1	-	35	2
DUCATI	12	1	157	8
EVA, EMBUGGY, VINTAGE, EVAN	-	-	9	-
FEISHEN, MONDIA	-	-	8	-
HAOJIANG, SENKE, ZONTES, TA	-	-	51	-
HARLEY DAVIDSON	4	-	76	18
HER CHEE, ADLY	-	-	22	-
HONDA	288	47	3.779	506
HSUN, HISUN, APACHI, ICHIBAN,	1	-	33	-
HUSQVARNA	3	-	22	1
INDIAN MOTORCYC	1	-	17	1
JIAJUE, JINDING, LANYING, DHS, M	2	-	34	-
JIALING, MOTORAN, TRAXX, SPA	13	-	88	-
JIANSHE, GEMINI	7	-	80	-
JINLANG, ZIPP, HORS, IVA, Ariic,	-	-	26	-
JINLING	1	-	12	1
JLAJI, HUATIAN, FEILING, TUTU,	2	-	39	-
JMSTAR, SHENKE, HUIBANG, JO	-	-	8	-
JOYNER	-	-	28	-
KAWASAKI	21	3	226	26
KEEWAY	-	-	11	1
KL	4	-	53	-
KTM	18	-	300	11
KWANG YANG	-	4	-	63
KYMCO	185	20	3.326	197
LIFAN	1	-	69	-
LIFAN, HONLEI, SKYGO, BISAN-L	49	-	252	1
LINHAI, KUBA, ONLINE, LHY	2	-	68	-
LML	2	-	42	3
LONCIN, KINLON, LONGTING, KU	3	-	222	-
MALAGUTI	-	1	-	6
MBK	-	2	3	18
MG MOTO	180	-	1.730	5
MODENAS	6	-	131	1
MOTO GUZZI	2	-	21	1
MOTO S.P.A	3	-	15	-
MV AGUSTA	-	-	9	2
ODES, LIANGZI, BRANSON	-	-	42	-
PEUGEOT	27	-	325	16
PGO	-	-	5	1
PIAGGIO	359	19	4.650	383
POLARIS	2	-	35	2
QINGQI, PIONEER, i-moto, SUPERE	3	-	13	3
QJ, QJIANG, KEEWAY, LEONE, K	22	-	368	3
QUADRO	-	-	11	-
RIYA	-	-	10	-
RIYA, HONLING, YAMAKOYO, TIA	-	-	42	-
SHANYANG	13	-	62	6
SHINERAY	3	-	76	-
SKYJET	-	-	11	1
SKYTEAM, SACIN, METALCO, SC	6	-	69	-
STANDARD	-	-	18	-
SUZUKI	19	9	353	162
SYM	427	8	5.749	102
TGB	5	-	166	1
TRIUMPH	12	-	152	9
VEEROD	-	-	7	1
WANGYE, SANBEN, UM, MONDIA	18	-	143	1
XGJAO, KAISAR, SKYJET, SOKON,	15	-	252	-
XINGYUE, GS MOON, AXY, SUMO	-	-	7	-
XINYANG	-	-	12	-
YAMAHA	630	50	5.339	590
YIBEN, MEIDUO, VONROAD, WU	-	-	9	1
YINXIANG, KENBO, VENOM, CHE	4	-	151	-
ZHONGNENG, ZNEN, daDo, DIRE	1	-	151	-
ZONGSHEN, ZIP STAR, ZNEN, PIA	1	-	23	1
ZXMCO, ZHONGXING, BEWHEEL	4	-	64	-
OTHER	5	6	165	35
TOTAL	2.683	183	32.829	2.348



EXPLANATORY NOTES

Survey on the issuing of new road motor vehicle circulation licenses

The survey on the issuing of new motor vehicle circulation licenses is a census survey. The released data give information, at country level, on the brand and type of the motor vehicle, as well as whether it is new or used. The survey does not include vehicles that move on rails, trolley busses, agricultural tractors and machinery. In addition, the following are excluded: all motor vehicles of the Armed Forces, Police, Fire Brigade, State Services, Diplomatic Corps, Foreign Missions, and Invalids of Wars, as well as motorcycles with a cylinder capacity less than 50 cc.

Legal basis Law 3832/2010

Reference Period October 2016

Coverage The production of monthly data is based on the registers held by the Ministry of Infrastructure, Transport and Networks, which records all the monthly changes observed in the vehicle registration licences at country level.

Definitions **Road motor vehicle** is any vehicle that, irrespective of the number of wheels, is moved by an engine and is designed to transport persons or cargo or both of them, either they are on the same single vehicle or on a trailer carried by the main motor vehicle. **New** road motor vehicle is any motor vehicle that is registered for the first time in Greece during the reference month and has not been put into circulation in any other country. **Used motor** vehicle is any motor vehicle that is registered for the first time in Greece and has been imported as a used one from abroad

Passenger motor vehicle: it is a motor vehicle designed to carry mostly people, having no more than 9 seats, including the driver's seat.

Bus: it is a motor vehicle, which is designed to carry mostly people, having more than 10 seats, including the driver's seat. (In the corresponding tables of this Press Release, this category also includes articulated buses.)

Lorry: it is motor vehicle designed to carry mostly cargo. (In the corresponding tables of this Press Release, this category also includes tractors, tow trucks, articulated tractors, and trucks with trailers).

Motorcycle: any two-wheeled motor vehicle, with or without sidecar, with maximum authorized design speed over 45 km/h, or in case it is powered by a combustion engine, with a cylinder capacity of 50 cc or over (In the corresponding tables of this Press Release, this category also includes the three-wheeled motor vehicles – motor tricycles).

Tricycle motor vehicle: it is a motor vehicle with three symmetrical wheels with maximum authorized design speed over 45 km/h, or in case it is powered by a combustion engine, with a cylinder capacity over the 50 cc. This category also includes four-wheel vehicles, except the light four-wheel motorcycles, whose empty vehicle tare (excluding the weight of the fuel or mixture of fuel-oil or the weight of the batteries for electric cars) is up to 400 kg in the case the vehicle is designed for passenger use or up to 550 kg in case the vehicle is designed to carry cargo and whose engine is up to 15KW.

Methodology Exhaustive Survey. The primary data derive from the Ministry of Infrastructure, Transport and Networks and are based on the issuing of new circulation licences as they are registered by the Regional Offices for Transport and Communications.

References

More information (graphs, tables) concerning the survey on the issuing of new motor vehicle circulation licences are available on the webpage of ELSTAT, www.statistics.gr, under the link "Statistical Themes > Transport > Vehicles > Vehicle > Vehicle Licensing – Vehicle Fleet