



HELLENIC REPUBLIC



HELLENIC STATISTICAL AUTHORITY

Piraeus, 29 May 2012

## PRESS RELEASE

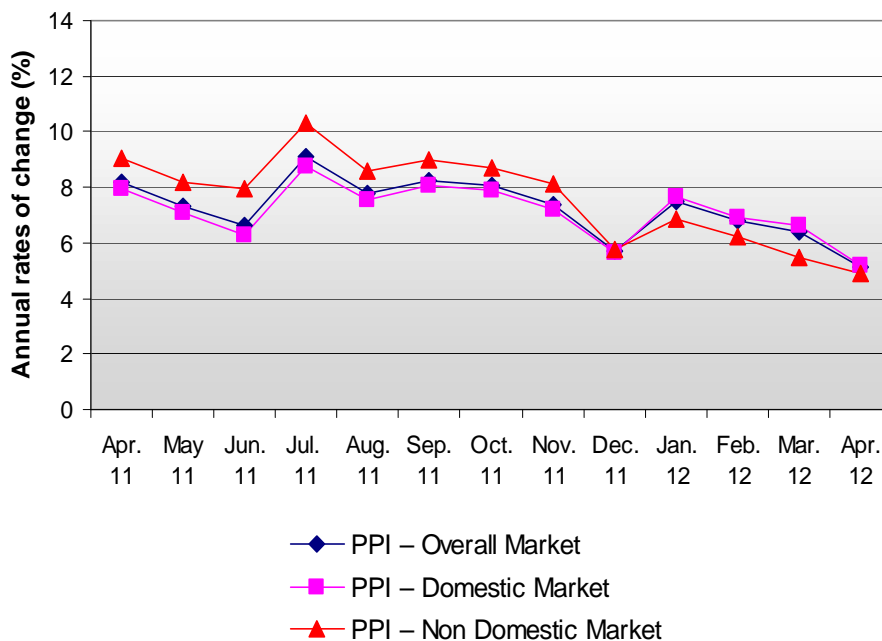
### PRODUCER PRICE INDEX IN INDUSTRY: April 2012

The Producer Price Index in Industry (PPI) in April 2012 compared with April 2011 recorded a rise of 5.1%. The index in April 2011 had recorded an increase of 8.2% compared with April 2010 (Table 1.II).

The PPI in April 2012 compared with March 2012 recorded a fall of 0.2%. The index in April 2011 had recorded an increase of 1.0% compared with March 2011 (Table 1.I).

The twelve-month average index, from May 2011 to April 2012, compared with the same index of the period from May 2010 to April 2011, increased by 7.1%. The previous year the twelve-month average index had increased by 6.8% (Table 6).

Evolution of annual rates of change of Producer Price Index (PPI) in Industry for Overall, Domestic and Non-Domestic Market



Information:

Economic and Short-Term Indicators Division

Wholesale Prices and Price Indices Section

Evridiki Vlachocosta  
Tel: 0030 213 1352742  
Fax: 0030 213 1352714

### **1. Monthly rates of change of April 2012 compared with March 2012.**

Prices in total industry in April 2012 decreased by 0.2% compared with the previous month, March 2012, due to the monthly changes of the sub-indices of the markets:

- a. The PPI of the Domestic Market fell by 0.2% (Table 2.I).
- b. The PPI of the Non-Domestic Market fell by 0.2% (Table 3.I).

### **2. Annual rates of change of April 2012 compared with April 2011.**

Prices in total industry in April 2012 increased by 5.1% compared with the same month of the previous year, April 2011, due to the annual changes of the sub-indices of the markets:

- a. The PPI of the Domestic Market grew by 5.2% (Table 2.II).
- b. The PPI of the Non-Domestic Market grew by 4.9% (Table 3.II).

**Table 1: Producer Price Index (PPI) in Industry – Overall Market**

Base year: 2005=100.0

**I) Monthly changes**

Codes	Main Industrial Groups - MIGs	Weighting Coefficients	April 2012	March 2012	Change (%)	April 2011	March 2011	Change (%)
0020	Overall Market	100000	139.0	139.3	-0.2	132.2	130.9	1.0
0040	Intermediate Goods	30305	131.6	131.5	0.1	130.5	130.8	-0.3
0050	Capital Goods	4541	115.8	115.8	0.0	115.4	115.7	-0.2
0060	Durable Consumer Goods	1818	112.8	112.8	0.0	113.0	113.0	0.0
0070	Non-Durable Consumer Goods	31725	112.1	112.2	-0.1	110.8	110.4	0.3
0090	Energy	31611	177.9	178.9	-0.6	158.9	154.8	2.6

**II) Annual changes**

Codes	Main Industrial Groups - MIGs	Weighting Coefficients	April			Change (%)	
			2012	2011	2010	2012/2011	2011/2010
0020	Overall Market	100000	139.0	132.2	122.2	5.1	8.2
0040	Intermediate Goods	30305	131.6	130.5	123.4	0.9	5.7
0050	Capital Goods	4541	115.8	115.4	115.2	0.3	0.2
0060	Durable Consumer Goods	1818	112.8	113.0	112.5	-0.2	0.4
0070	Non-Durable Consumer Goods	31725	112.1	110.8	109.7	1.2	0.9
0090	Energy	31611	177.9	158.9	135.2	11.9	17.5

Note:

1. The indices are calculated with infinite decimal figures and are rounded up to one decimal figure when published.
2. Percentage changes are calculated on the basis of the indices with five decimal figures and are rounded up to one decimal figure when published.

**Table 2: Producer Price Index (PPI) in Industry – Domestic Market**

Base year: 2005=100.0

**I) Monthly changes**

Codes	Main Industrial Groups - MIGs	Weighting Coefficients	April 2012	March 2012	Change (%)	April 2011	March 2011	Change (%)
0020	Domestic Market	77714	140.2	140.5	-0.2	133.3	131.7	1.2
0040	Intermediate Goods	20926	131.6	131.5	0.1	130.8	131.0	-0.1
0050	Capital Goods	3591	118.0	118.1	0.0	117.8	118.1	-0.3
0060	Durable Consumer Goods	1341	115.7	115.7	0.0	116.0	116.0	0.0
0070	Non-Durable Consumer Goods	24660	113.5	113.6	-0.1	112.5	112.0	0.4
0090	Energy	27196	175.2	176.0	-0.5	156.9	152.8	2.7

**II) Annual changes**

Codes	Main Industrial Groups - MIGs	Weighting Coefficients	April			Change (%)	
			2012	2011	2010	2012/2011	2011/2010
0020	Domestic Market	77714	140.2	133.3	123.5	5.2	7.9
0040	Intermediate Goods	20926	131.6	130.8	123.7	0.6	5.8
0050	Capital Goods	3591	118.0	117.8	117.5	0.2	0.3
0060	Durable Consumer Goods	1341	115.7	116.0	115.4	-0.3	0.5
0070	Non-Durable Consumer Goods	24660	113.5	112.5	111.8	0.9	0.6
0090	Energy	27196	175.2	156.9	135.1	11.7	16.2

Note:

1. The indices are calculated with infinite decimal figures and are rounded up to one decimal figure when published.
2. Percentage changes are calculated on the basis of the indices with five decimal figures and are rounded up to one decimal figure when published.

**Table 3: Producer Price Index (PPI) in Industry – Non Domestic Market**

Base year : 2005=100.0

**I) Monthly changes**

Codes	Main Industrial Groups - MIGs	Weighting Coefficients	April 2012	March 2012	Change (%)	April 2011	March 2011	Change (%)
0020	Non-Domestic Market	22286	134.8	135.1	-0.2	128.5	128.1	0.3
0040	Intermediate Goods	9379	131.8	131.5	0.2	129.8	130.5	-0.5
0050	Capital Goods	950	107.2	107.2	0.0	106.3	106.3	-0.1
0060	Durable Consumer Goods	477	104.6	104.6	0.0	104.5	104.5	0.0
0070	Non-Durable Consumer Goods	7065	107.2	107.2	0.0	104.7	104.9	-0.2
0090	Energy	4415	194.7	197.0	-1.2	171.5	167.6	2.3

**II) Annual changes**

Codes	Main Industrial Groups - MIGs	Weighting Coefficients	April			Change (%)	
			2012	2011	2010	2012/2011	2011/2010
0020	Non-Domestic Market	22286	134.8	128.5	117.9	4.9	9.0
0040	Intermediate Goods	9379	131.8	129.8	122.8	1.6	5.6
0050	Capital Goods	950	107.2	106.3	106.4	0.9	-0.1
0060	Durable Consumer Goods	477	104.6	104.5	104.2	0.1	0.3
0070	Non-Durable Consumer Goods	7065	107.2	104.7	102.3	2.3	2.4
0090	Energy	4415	194.7	171.5	136.2	13.6	25.9

Note:

1. The indices are calculated with infinite decimal figures and are rounded up to one decimal figure when published.
2. Percentage changes are calculated on the basis of the indices with five decimal figures and are rounded up to one decimal figure when published.

**Table 4: Producer Price Index (PPI) in Industry – Non Domestic Eurozone Market**

Base year : 2005=100.0

**I) Monthly changes**

Codes	Main Industrial Groups - MIGs	Weighting Coefficients	April 2012	March 2012	Change (%)	April 2011	March 2011	Change (%)
0020	Non-Domestic Eurozone Market	9460	121.1	121.2	0.0	119.1	119.3	-0.1
0040	Intermediate Goods	4235	131.9	131.6	0.2	130.8	131.6	-0.7
0050	Capital Goods	364	108.9	108.8	0.1	108.1	108.2	-0.1
0060	Durable Consumer Goods	283	104.9	104.9	0.0	104.9	104.9	0.0
0070	Non-Durable Consumer Goods	4016	104.0	103.9	0.1	102.9	102.9	0.0
0090	Energy	562	177.9	181.4	-1.9	161.2	157.8	2.2

**II) Annual changes**

Codes	Main Industrial Groups - MIGs	Weighting Coefficients	April			Change (%)	
			2012	2011	2010	2012/2011	2011/2010
0020	Non-Domestic Eurozone Market	9460	121.1	119.1	111.7	1.7	6.6
0040	Intermediate Goods	4235	131.9	130.8	122.0	0.9	7.2
0050	Capital Goods	364	108.9	108.1	108.1	0.7	0.0
0060	Durable Consumer Goods	283	104.9	104.9	104.8	0.0	0.1
0070	Non-Durable Consumer Goods	4016	104.0	102.9	99.7	1.0	3.3
0090	Energy	562	177.9	161.2	125.6	10.3	28.4

Note:

1. The indices are calculated with infinite decimal figures and are rounded up to one decimal figure when published.
2. Percentage changes are calculated on the basis of the indices with five decimal figures and are rounded up to one decimal figure when published.

**Table 5: Producer Price Index (PPI) in Industry – Non Domestic Non Eurozone Market**

Base year : 2005=100.0

**I) Monthly changes**

Codes	Main Industrial Groups - MIGs	Weighting Coefficients	April 2012	March 2012	Change (%)	April 2011	March 2011	Change (%)
0020	Non-Domestic Non Eurozone Market	12826	144.9	145.5	-0.3	135.5	134.7	0.6
0040	Intermediate Goods	5144	131.7	131.3	0.3	128.9	129.5	-0.4
0050	Capital Goods	586	106.1	106.2	0.0	105.1	105.2	-0.1
0060	Durable Consumer Goods	194	104.1	104.1	0.0	103.9	103.9	0.0
0070	Non-Durable Consumer Goods	3049	111.4	111.4	0.0	107.1	107.5	-0.4
0090	Energy	3853	197.2	199.3	-1.1	173.0	169.0	2.3

**II) Annual changes**

Codes	Main Industrial Groups - MIGs	Weighting Coefficients				Change (%)	
			2012	April 2011	2010	2012/2011	2011/2010
0020	Non-Domestic Non Eurozone Market	12826	144.9	135.5	122.4	7.0	10.7
0040	Intermediate Goods	5144	131.7	128.9	123.5	2.2	4.4
0050	Capital Goods	586	106.1	105.1	105.3	0.9	-0.2
0060	Durable Consumer Goods	194	104.1	103.9	103.2	0.3	0.6
0070	Non-Durable Consumer Goods	3049	111.4	107.1	105.8	4.0	1.2
0090	Energy	3853	197.2	173.0	137.8	14.0	25.5

Note:

1. The indices are calculated with infinite decimal figures and are rounded up to one decimal figure when published.

2. Percentage changes are calculated on the basis of the indices with five decimal figures and are rounded up to one decimal figure when published.

**Table 6: Producer Price Index (PPI) in Industry Changes**

**Base year : 2005=100.0**

Year and Month	Overall Index	Monthly Changes (%)	Annual Changes (%)	12-month moving average	12-month moving average changes
<b>2010:</b> 1	118.4	1.2	5.8	114.6	-5.1
2	118.8	0.3	6.7	115.3	-4.1
3	120.5	1.4	8.7	116.1	-2.9
4	122.2	1.5	9.8	117.0	-1.4
5	121.6	-0.5	7.9	117.7	0.0
6	122.6	0.8	6.5	118.3	1.4
7	121.2	-1.1	6.1	118.9	2.9
8	121.5	0.3	4.6	119.4	4.1
9	121.9	0.3	5.8	119.9	5.3
10	122.1	0.1	5.0	120.4	6.0
11	123.7	1.3	5.9	121.0	6.5
12	125.9	1.8	7.6	121.7	6.7
<i>Annual Average</i>	<i>121.7</i>			<i>121.7</i>	<i>6.7</i>
<b>2011:</b> 1	127.1	0.9	7.3	122.4	6.8
2	128.9	1.4	8.5	123.3	7.0
3	130.9	1.6	8.7	124.1	7.0
4	132.2	1.0	8.2	125.0	6.8
5	130.5	-1.3	7.3	125.7	6.8
6	130.7	0.2	6.6	126.4	6.8
7	132.2	1.1	9.1	127.3	7.1
8	131.0	-0.9	7.8	128.1	7.3
9	132.0	0.8	8.3	128.9	7.5
10	132.0	0.0	8.1	129.8	7.8
11	132.9	0.7	7.4	130.5	7.9
12	133.1	0.2	5.7	131.1	7.7
<i>Annual Average</i>	<i>131.1</i>			<i>131.1</i>	<i>7.7</i>
<b>2012:</b> 1	136.6	2.7	7.5	131.9	7.7
2	137.6	0.7	6.8	132.6	7.6
3	139.3	1.2	6.4	133.3	7.4
4	139.0	-0.2	5.1	133.9	7.1
5					
6					
7					
8					
9					
10					
11					
12					
<i>Annual Average</i>					

Note:

1. The indices are calculated with infinite decimal figures and are rounded up to one decimal figure when published.

2. Percentage changes are calculated on the basis of the indices with five decimal figures and are rounded up to one decimal figure when published.



## METHODOLOGICAL NOTES

<b>Generally</b>	The Producer Price Index (PPI) in Industry, in its current form, is being released since February 2005. The PPI replaced the Wholesale Price Index which was compiled since 1963.
<b>Purpose of the index – definitions</b>	<p>The purpose of the Producer Price Index in Industry (PPI) is to measure the monthly rates of change in the prices of goods that are produced in the domestic market and are sold in this market or are exported to the non-domestic market.</p> <p>The Producer Price Index is a monthly index and it is composed by the sub-indices of the domestic and non-domestic market. The index of the non-domestic market is also sub-divided into the two market zones: the euro-zone and the non-euro-zone index.</p> <p>The collected prices for products sold in the domestic market are basic prices, i.e. prices excluding VAT and other similar deductible taxes directly linked to turnover and also, excluding duties and other taxes on products. Moreover, subsidies on products are included in the basic prices. The prices collected for products sold in the non-domestic market are quoted FOB (Free on board).</p> <p>The price data collected in the framework of the compilation of PPI refer mainly to transactions between the enterprises that produce and sell the selected products for reporting and the enterprises that buy those products, irrespective of whether those products are to be used as raw materials or as merchandise.</p>
<b>Legal basis</b>	The compilation of PPI is governed by Council Regulation (EEC) No.1165/98 “concerning short-term statistics” and by Regulation No.1158/05 (amending the above mentioned Regulation) of the European Parliament and of the Council. Furthermore, the PPI is governed by Regulation (EEC) No.1893/2006 of the European Parliament and of the Council, by the Commission Regulation (EEC) No.656/2007 and by Regulation (EEC) No.451/2008 of the Council.
<b>Reference period</b>	Month
<b>Base year</b>	2005=100.0.
<b>Revision</b>	The PPI is a fixed base index. Pursuant to the provisions of Council Regulation No 1165/98 concerning short-term statistics, the index in question is updated every five (5) years in years ending in 0 or 5.
<b>Statistical classifications</b>	At the level of categories of economic activities the new Eurostat classification NACE Rev. 2 was used (Regulation 1893/2006), while at the level of main industrial groups, the allocation of two-digit and three-digit NACE Rev. 2 headings to categories of aggregate classification was used, in accordance with the Commission Regulation 656/2007. At product level, the new Eurostat classification CPA 2008 was used, according to the Council Regulation 451/2008.
<b>Geographical coverage</b>	The Index covers the whole of the country, with data from 44 prefectures.
<b>Coverage of economic activities</b>	The index covers all the sections of industry, the main industrial groups, all the levels of economic activities (divisions, groups, classes) and the level of products.
<b>Statistical survey</b>	The data are collected from approximately 1.500 enterprises and the total number of observations (prices) is approximately 3.280. More specifically 398 products sold in the domestic market and 172 products sold in the non-domestic market were selected. Out of the 172 products sold in the non-domestic market, 145 products are sold in the euro-zone countries and 155 products are sold in the non-euro-zone countries.
<b>Publication of data</b>	The PPI with the new base year (2005) is being released since March 2009, with February 2009 as first reference month. Data with base year 2005=100.0 are available from February 2000 onwards.
<b>References</b>	More information on the methodology concerning the compilation and calculation of the index as well as the time series is available on the EL.STAT. : <a href="http://www.statistics.gr/portal/page/portal/ESYE/PAGE-themes?p_param=A0503">http://www.statistics.gr/portal/page/portal/ESYE/PAGE-themes?p_param=A0503</a>