



HELLENIC REPUBLIC



HELLENIC STATISTICAL AUTHORITY

Piraeus, 29 May 2013

PRESS RELEASE

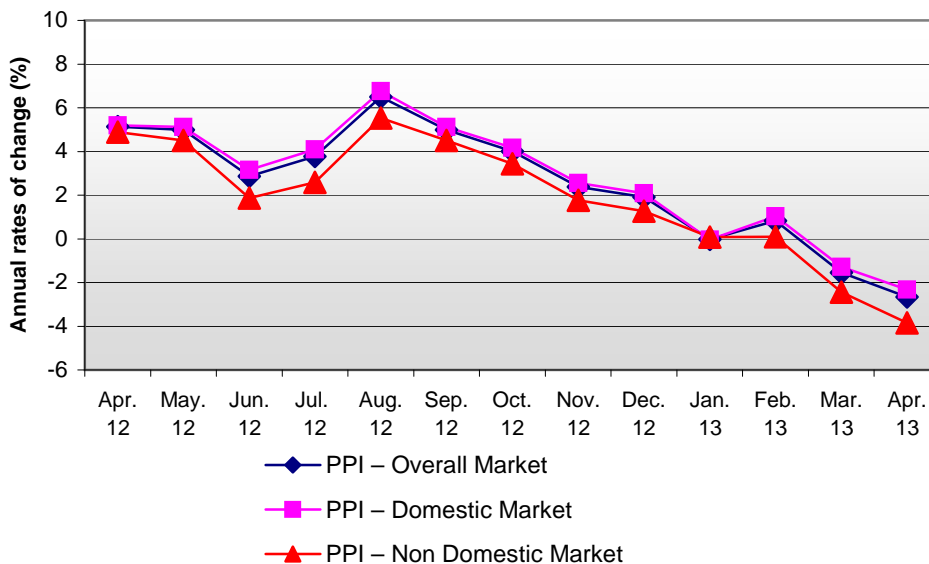
PRODUCER PRICE INDEX IN INDUSTRY : April 2013

The Producer Price Index in Industry (PPI) in April 2013 compared with April 2012 recorded a decrease of 2.7%. The index in April 2012 had recorded an increase of 5.1% compared with April 2011 (Table 1.II).

The PPI in April 2013 compared with March 2013 recorded a decrease of 1.3%. The index in April 2012 had recorded a decrease of 0.2% compared with March 2012 (Table 1.I).

The twelve-month average index, from May 2012 to April 2013, compared with the same index of the period from May 2011 to April 2012, increased by 2.3%. The previous year the twelve-month average index had increased by 7.1% (Table 6).

Evolution of annual rates of change of Producer Price Index (PPI) in Industry for Overall, Domestic and Non-Domestic Market



Information:

Economic and Short-Term Indicators Division
Wholesale Prices and Price Indices Section

Evridiki Vlachocosta
Tel: 0030 213 1352742
Fax: 0030 213 1352714

1. Monthly rates of change of April 2013 compared with March 2013.

Prices in total industry in April 2013 decreased by 1.3% compared with the previous month, March 2013, due to the monthly changes of the sub-indices of the markets:

- a. The PPI of the Domestic Market decreased by 1.3% (Table 2.I).
- b. The PPI of the Non-Domestic Market decreased by 1.7% (Table 3.I).

2. Annual rates of change of April 2013 compared with April 2012.

Prices in total industry in April 2013 decreased by 2.7% compared with the same month of the previous year, April 2012, due to the annual changes of the sub-indices of the markets:

- a. The PPI of the Domestic Market decreased by 2.3% (Table 2.II).
- b. The PPI of the Non-Domestic Market decreased by 3.9% (Table 3.II).

Table 1: Producer Price Index (PPI) in Industry – Overall Market

Base year: 2005=100.0

I) Monthly changes

Codes	Main Industrial Groups - MIGs	Weighting Coefficients	April 2013	March 2013	Change (%)	April 2012	March 2012	Change (%)
20	Overall Market	100,000	135.3	137.2	-1.3	139.0	139.3	-0.2
40	Intermediate Goods	30,305	130.2	130.7	-0.4	131.6	131.5	0.1
50	Capital Goods	4,541	116.0	115.7	0.2	115.8	115.8	0.0
60	Durable Consumer Goods	1,818	113.0	112.7	0.2	112.8	112.8	0.0
70	Non-Durable Consumer Goods	31,725	113.7	113.3	0.3	112.1	112.2	-0.1
90	Energy	31,611	166.0	171.8	-3.4	177.9	178.9	-0.6

II) Annual changes

Codes	Main Industrial Groups - MIGs	Weighting Coefficients	April			Change (%)	
			2013	2012	2011	2013/2012	2012/2011
20	Overall Market	100,000	135.3	139.0	132.2	-2.7	5.1
40	Intermediate Goods	30,305	130.2	131.6	130.5	-1.1	0.9
50	Capital Goods	4,541	116.0	115.8	115.4	0.2	0.3
60	Durable Consumer Goods	1,818	113.0	112.8	113.0	0.2	-0.2
70	Non-Durable Consumer Goods	31,725	113.7	112.1	110.8	1.5	1.2
90	Energy	31,611	166.0	177.9	158.9	-6.7	11.9

Note:

1. The indices are calculated with infinite decimal figures and are rounded up to one decimal figure when published

2. Percentage changes are calculated on the basis of the indices with five decimal figures and are rounded up to one decimal figure when published.

Table 2: Producer Price Index (PPI) in Industry – Domestic Market

Base year: 2005=100.0

I) Monthly changes

Codes	Main Industrial Groups - MIGs	Weighting Coefficients	April 2013	March 2013	Change (%)	April 2012	March 2012	Change (%)
20	Overall Market	77,714	136.9	138.7	-1.3	140.2	140.5	-0.2
40	Intermediate Goods	20,926	130.9	131.2	-0.2	131.6	131.5	0.1
50	Capital Goods	3,591	118.2	118.0	0.2	118.0	118.1	0.0
60	Durable Consumer Goods	1,341	116.0	115.6	0.3	115.7	115.7	0.0
70	Non-Durable Consumer Goods	24,660	114.8	114.3	0.4	113.5	113.6	-0.1
90	Energy	27,196	165.2	170.4	-3.1	175.2	176.0	-0.5

II) Annual changes

Codes	Main Industrial Groups - MIGs	Weighting Coefficients	April			Change (%)	
			2013	2012	2011	2013/2012	2012/2011
20	Overall Market	77,714	136.9	140.2	133.3	-2.3	5.2
40	Intermediate Goods	20,926	130.9	131.6	130.8	-0.5	0.6
50	Capital Goods	3,591	118.2	118.0	117.8	0.2	0.2
60	Durable Consumer Goods	1,341	116.0	115.7	116.0	0.3	-0.3
70	Non-Durable Consumer Goods	24,660	114.8	113.5	112.5	1.1	0.9
90	Energy	27,196	165.2	175.2	156.9	-5.7	11.7

Note:

1. The indices are calculated with infinite decimal figures and are rounded up to one decimal figure when published

2. Percentage changes are calculated on the basis of the indices with five decimal figures and are rounded up to one decimal figure when published.

Table 3: Producer Price Index (PPI) in Industry – Non Domestic Market

Base year: 2005=100.0

I) Monthly changes

Codes	Main Industrial Groups - MIGs	Weighting Coefficients	April 2013	March 2013	Change (%)	April 2012	March 2012	Change (%)
20	Overall Market	22,286	129.6	131.8	-1.7	134.8	135.1	-0.2
40	Intermediate Goods	9,379	128.5	129.5	-0.8	131.8	131.5	0.2
50	Capital Goods	950	107.5	107.4	0.1	107.2	107.2	0.0
60	Durable Consumer Goods	477	104.5	104.5	0.0	104.6	104.6	0.0
70	Non-Durable Consumer Goods	7,065	110.2	110.1	0.1	107.2	107.2	0.0
90	Energy	4,415	170.7	179.9	-5.1	194.7	197.0	-1.2

II) Annual changes

Codes	Main Industrial Groups - MIGs	Weighting Coefficients	April			Change (%)	
			2013	2012	2011	2013/2012	2012/2011
20	Overall Market	22,286	129.6	134.8	128.5	-3.9	4.9
40	Intermediate Goods	9,379	128.5	131.8	129.8	-2.5	1.6
50	Capital Goods	950	107.5	107.2	106.3	0.3	0.9
60	Durable Consumer Goods	477	104.5	104.6	104.5	-0.1	0.1
70	Non-Durable Consumer Goods	7,065	110.2	107.2	104.7	2.8	2.3
90	Energy	4,415	170.7	194.7	171.5	-12.3	13.6

Note:

1. The indices are calculated with infinite decimal figures and are rounded up to one decimal figure when published

2. Percentage changes are calculated on the basis of the indices with five decimal figures and are rounded up to one decimal figure when published.

Table 4: Producer Price Index (PPI) in Industry – Non Domestic Eurozone Market

Base year: 2005=100.0

I) Monthly changes

Codes	Main Industrial Groups - MIGs	Weighting Coefficients	April 2013	March 2013	Change (%)	April 2012	March 2012	Change (%)
20	Overall Market	9,460	119.9	120.8	-0.8	121.1	121.2	0.0
40	Intermediate Goods	4,235	128.7	129.5	-0.6	131.9	131.6	0.2
50	Capital Goods	364	109.0	109.0	0.0	108.9	108.8	0.1
60	Durable Consumer Goods	283	104.9	104.9	0.0	104.9	104.9	0.0
70	Non-Durable Consumer Goods	4,016	108.1	108.2	-0.1	104.0	103.9	0.1
90	Energy	562	152.9	161.8	-5.5	177.9	181.4	-1.9

II) Annual changes

Codes	Main Industrial Groups - MIGs	Weighting Coefficients	April			Change (%)	
			2013	2012	2011	2013/2012	2012/2011
20	Overall Market	9,460	119.9	121.1	119.1	-1.0	1.7
40	Intermediate Goods	4,235	128.7	131.9	130.8	-2.4	0.9
50	Capital Goods	364	109.0	108.9	108.1	0.1	0.7
60	Durable Consumer Goods	283	104.9	104.9	104.9	0.0	0.0
70	Non-Durable Consumer Goods	4,016	108.1	104.0	102.9	3.9	1.0
90	Energy	562	152.9	177.9	161.2	-14.1	10.3

Note:

1. The indices are calculated with infinite decimal figures and are rounded up to one decimal figure when published

2. Percentage changes are calculated on the basis of the indices with five decimal figures and are rounded up to one decimal figure when published.

Table 5: Producer Price Index (PPI) in Industry – Non Domestic Non Eurozone Market

Base year: 2005=100.0

I) Monthly changes

Codes	Main Industrial Groups - MIGs	Weighting Coefficients	April 2013	March 2013	Change (%)	April 2012	March 2012	Change (%)
20	Overall Market	12,826	136.8	139.9	-2.2	144.9	145.5	-0.3
40	Intermediate Goods	5,144	128.3	129.4	-0.9	131.7	131.3	0.3
50	Capital Goods	586	106.7	106.4	0.2	106.1	106.2	0.0
60	Durable Consumer Goods	194	103.9	103.9	0.0	104.1	104.1	0.0
70	Non-Durable Consumer Goods	3,049	112.9	112.6	0.3	111.4	111.4	0.0
90	Energy	3,853	173.3	182.5	-5.0	197.2	199.3	-1.1

II) Annual changes

Codes	Main Industrial Groups - MIGs	Weighting Coefficients	April			Change (%)	
			2013	2012	2011	2013/2012	2012/2011
20	Overall Market	12,826	136.8	144.9	135.5	-5.6	7.0
40	Intermediate Goods	5,144	128.3	131.7	128.9	-2.6	2.2
50	Capital Goods	586	106.7	106.1	105.1	0.5	0.9
60	Durable Consumer Goods	194	103.9	104.1	103.9	-0.2	0.3
70	Non-Durable Consumer Goods	3,049	112.9	111.4	107.1	1.4	4.0
90	Energy	3,853	173.3	197.2	173.0	-12.1	14.0

Note:

1. The indices are calculated with infinite decimal figures and are rounded up to one decimal figure when published

2. Percentage changes are calculated on the basis of the indices with five decimal figures and are rounded up to one decimal figure when published.

Table 6: Producer Price Index (PPI) in Industry Changes

Base year: 2005=100.0

Year and Month	Overall Index	Monthly Changes (%)	Annual Changes (%)	12-month moving average	12-month moving average changes
2011 : 1	127.1	0.9	7.3	122.4	6.8
2	128.9	1.4	8.5	123.3	7.0
3	130.9	1.6	8.7	124.1	7.0
4	132.2	1.0	8.2	125.0	6.8
5	130.5	-1.3	7.3	125.7	6.8
6	130.7	0.2	6.6	126.4	6.8
7	132.2	1.1	9.1	127.3	7.1
8	131.0	-0.9	7.8	128.1	7.3
9	132.0	0.8	8.3	128.9	7.5
10	132.0	0.0	8.1	129.8	7.8
11	132.9	0.7	7.4	130.5	7.9
12	133.1	0.2	5.7	131.1	7.7
<i>Annual Average</i>	<i>131.1</i>			<i>131.1</i>	<i>7.7</i>
2012 : 1	136.6	2.7	7.5	131.9	7.7
2	137.6	0.7	6.8	132.6	7.6
3	139.3	1.2	6.4	133.3	7.4
4	139.0	-0.2	5.1	133.9	7.1
5	137.0	-1.4	5.0	134.4	6.9
6	134.4	-1.9	2.9	134.8	6.6
7	137.2	2.0	3.8	135.2	6.2
8	139.5	1.7	6.5	135.9	6.1
9	138.6	-0.6	5.0	136.4	5.8
10	137.3	-1.0	4.0	136.9	5.5
11	136.0	-0.9	2.4	137.1	5.1
12	135.6	-0.3	1.9	137.3	4.7
<i>Annual Average</i>	<i>137.3</i>			<i>137.3</i>	<i>4.7</i>
2013 : 1	136.6	0.7	0.0	137.3	4.1
2	138.7	1.6	0.8	137.4	3.6
3	137.2	-1.1	-1.5	137.3	2.9
4	135.3	-1.3	-2.7	136.9	2.3
5					
6					
7					
8					
9					
10					
11					
12					
<i>Annual Average</i>					

Note:

1. The indices are calculated with infinite decimal figures and are rounded up to one decimal figure when published
2. Percentage changes are calculated on the basis of the indices with five decimal figures and are rounded up to one decimal figure when published.

METHODOLOGICAL NOTES

Generally The Producer Price Index (PPI) in Industry, in its current form, is being released since February 2005. The PPI replaced the Wholesale Price Index which was compiled since 1963.

Purpose of the index – definitions – The purpose of the Producer Price Index in Industry (PPI) is to measure the monthly rates of change in the prices of goods that are produced in the domestic market and are sold in this market or are exported to the non-domestic market.

The Producer Price Index is a monthly index and it is composed by the sub-indices of the domestic and non-domestic market. The index of the non-domestic market is also sub-divided into the two market zones: the euro-zone and the non-euro-zone index.

The collected prices for products sold in the domestic market are basic prices, i.e. prices excluding VAT and other similar deductible taxes directly linked to turnover and also, excluding duties and other taxes on products. Moreover, subsidies on products are included in the basic prices. The prices collected for products sold in the non-domestic market are quoted FOB (Free on board).

The price data collected in the framework of the compilation of PPI refer mainly to transactions between the enterprises that produce and sell the selected products for reporting and the enterprises that buy those products, irrespective of whether those products are to be used as raw materials or as merchandise.

Legal basis The compilation of PPI is governed by Council Regulation (EEC) No.1165/98 “concerning short-term statistics” and by Regulation No.1158/05 (amending the above mentioned Regulation) of the European Parliament and of the Council. Furthermore, the PPI is governed by Regulation (EEC) No.1893/2006 of the European Parliament and of the Council, by the Commission Regulation (EEC) No.656/2007 and by Regulation (EEC) No.451/2008 of the Council.

Reference period Month

Base year 2005=100.0.

Revision The PPI is a fixed base index. Pursuant to the provisions of Council Regulation No 1165/98 concerning short-term statistics, the index in question is updated every five (5) years in years ending in 0 or 5.

Statistical classifications At the level of categories of economic activities the new Eurostat classification NACE Rev. 2 was used (Regulation 1893/2006), while at the level of main industrial groups, the allocation of two-digit and three-digit NACE Rev. 2 headings to categories of aggregate classification was used, in accordance with the Commission Regulation 656/2007. At product level, the new Eurostat classification CPA 2008 was used, according to the Council Regulation 451/2008.

Geographical coverage The Index covers the whole of the country, with data from 44 prefectures.

Coverage of economic activities The index covers all the sections of industry, the main industrial groups, all the levels of economic activities (divisions, groups, classes) and the level of products.

Statistical survey The data are collected from approximately 1.500 enterprises and the total number of observations (prices) is approximately 3.280. More specifically 398 products sold in the domestic market and 172 products sold in the non-domestic market were selected. Out of the 172 products sold in the non-domestic market, 145 products are sold in the euro-zone countries and 155 products are sold in the non-euro-zone countries.

Publication of data The PPI with the new base year (2005) is being released since March 2009, with February 2009 as first reference month. Data with base year 2005=100.0 are available from February 2000 onwards.

References More information on the methodology concerning the compilation and calculation of the index as well as the time series is available on the EL.STAT. :

http://www.statistics.gr/portal/page/portal/ESYE/PAGE-themes?p_param=A0503