



**HELLENIC REPUBLIC
HELLENIC STATISTICAL AUTHORITY**

Piraeus, 13/9/2010

PRESS RELEASE

Decrease in the volume of Total building Activity by 28.9 %

Survey of Building Activity :

June 2010

According to provisional data published by the Hellenic Statistical Authority, in June 2010 the total Building Activity (private-public), in the whole country, which is calculated by the number of issued building permits, amounted to 4,666. This figure corresponds to 809.4 thousand m² of surface and 3,079.6 thousand m³ of volume, which shows a decrease of 13.0%, in the number of building permits, of 31.6% in surface and of 28.9% in volume as compared to the same month of 2009 (Table 1).

Private Building Activity, in the whole country, summed to 4,623 building permits, which corresponds to 788.1 thousand m² of surface and 2,974.0 thousand m³ of volume. As compared to the same month of 2009 (Table 2), there is a decrease in the number of building permits of 13.1%, in surface of 32.3% and in volume of 30.0% (Table 2).

Public Building Activity in the whole country in June 2010, amounted to 43 building permits, which corresponds to 21.3 thousand m² of surface and 105.7 thousand m³ of volume. The contribution of Public Building Activity in the total building volume, in June 2010, is 3.4%.

In the last twelve months, from July 2009 until June 2010, the total Building Activity (Private and Public) in Country Total, measured by the number of issued building permits, amounted to 53,845. This figure corresponds to 11,818.7 thousand m² of surface and 43,217.4 thousand m³ of volume, which shows a decrease of 10.8% in the number of building permits, 20.3% in surface and 24.6% in volume compared to the respective period of July 2008 - June 2009 (Table 3). In the same period from July 2009 to June 2010, Private Building Activity shows in Country Total, a reduction by 10.8% in the number of issued building permits, 20.7% in surface and 25.4% in volume, compared to the respective period July 2008 - June 2009 (Table 4). The contribution of Public Building Activity in the total building volume, for the same period, is 3.7%.

During the period January-June 2010, the total Building Activity (private-public) in the whole country, indicated a decrease of 8.6% in the number of issued building permits, 18.7% in surface and 24.4% in volume compared to the same period of the year 2009 (Table 5).

During the same period January-June 2010, private building activity in the whole country, indicated a decrease of 8.4% in the number of issued building permits, 18.1% in surface and 23.9% in volume in comparison with the same period January-June 2009 (Table 6).

Information:

Directorate of Secondary Sector Statistics
Unit of Construction and Environment Statistics
Papanagnou Ioanna
Tel. : 213 135 2045
Fax : 213 135 2456
[e-mail : papanag@statistics.gr](mailto:papanag@statistics.gr)

Table 1. Total Building Activity (Private-Public), by Region, on June 2009 and 2010 *

Region	Number of building permits			Surface (in thousand m ²)			Volume (in thousand m ³)		
	June		Change (%)	June		Change (%)	June		Change (%)
	2009	2010		2009	2010		2009	2010	
E. Makedonia and Thraki	266	223	-16,2	54,4	33,0	-39,4	205,3	123,2	-40,0
Central Makedonia	731	604	-17,4	216,4	138,6	-36,0	848,6	605,6	-28,6
Western Makedonia	112	90	-19,6	22,7	16,5	-27,5	75,3	58,2	-22,6
Thessalia	318	282	-11,3	87,7	58,8	-32,9	394,9	218,5	-44,7
Ipiros	193	187	-3,1	60,7	36,0	-40,7	204,6	138,3	-32,4
Ionian Islands	225	138	-38,7	36,4	17,7	-51,4	127,7	60,9	-52,3
Western Greece	371	437	17,8	81,5	77,0	-5,5	291,9	279,2	-4,3
Central Greece	449	353	-21,4	104,0	62,9	-39,5	415,6	228,6	-45,0
Peloponissos	451	421	-6,7	85,4	74,2	-13,1	299,9	282,0	-6,0
Attiki	1.405	1.337	-4,8	260,0	179,2	-31,1	891,3	655,6	-26,4
North Egeo	184	90	-51,1	20,3	12,2	-40,0	66,3	36,2	-45,5
South Egeo	301	222	-26,2	60,8	36,7	-39,7	194,8	126,1	-35,2
Kriti	360	282	-21,7	93,6	66,6	-28,8	318,0	267,1	-16,0
Greece, Total	5.366	4.666	-13,0	1.184,1	809,4	-31,6	4.334,1	3.079,6	-28,9

* Provisional data

Table 2. Private Building Activity, by Region, on June 2009 and 2010*

Region	Number of building permits			Surface (in thousand m ²)			Volume (in thousand m ³)		
	June		Change (%)	June		Change (%)	June		Change (%)
	2009	2010		2009	2010		2009	2010	
E. Makedonia and Thraki	258	221	-14,3	53,2	33,0	-38,0	200,0	123,1	-38,4
Central Makedonia	723	591	-18,3	213,1	130,2	-38,9	825,9	578,0	-30,0
Western Makedonia	110	86	-21,8	21,0	14,4	-31,7	69,2	43,7	-36,9
Thessalia	314	276	-12,1	86,4	55,5	-35,8	389,1	198,5	-49,0
Ipiros	190	187	-1,6	58,2	36,0	-38,1	195,6	138,3	-29,3
Ionian Islands	225	138	-38,7	36,4	17,7	-51,4	127,7	60,9	-52,3
Western Greece	369	435	17,9	80,8	76,7	-5,0	288,9	278,4	-3,7
Central Greece	445	349	-21,6	102,2	62,5	-38,9	407,4	227,2	-44,2
Peloponissos	447	418	-6,5	84,6	73,9	-12,7	297,2	280,9	-5,5
Attiki	1.403	1.336	-4,8	259,6	179,2	-31,0	890,1	655,6	-26,3
North Egeo	183	90	-50,8	20,3	12,2	-40,0	66,3	36,2	-45,5
South Egeo	299	222	-25,8	60,8	36,7	-39,7	194,8	126,1	-35,2
Kriti	353	274	-22,4	88,2	60,3	-31,7	297,9	227,1	-23,8
Greece, Total	5.319	4.623	-13,1	1.164,8	788,1	-32,3	4.250,1	2.974,0	-30,0

* Provisional data

Table 3. Total Building Activity (Private-Public), by Region, for the period July 2008 - June 2009 and July 2009 - June 2010 *

Region	Number of building permits			Surface (in thousand m ²)			Volume (in thousand m ³)		
	July-June		Change (%)	July-June		Change (%)	July-June		Change (%)
	2008/2009	2009/2010		2008/2009	2009/2010		2008/2009	2009/2010	
E. Makedonia and Thraki	3.082	2.798	-9,2	705,4	705,4	-12,4	2.628,2	2.261,6	-13,9
Central Makedonia	7.976	7.002	-12,2	2.357,0	2.357,0	-21,9	10.401,5	6.985,4	-32,8
Western Makedonia	1.175	969	-17,5	363,4	363,4	-21,8	1.485,4	1.088,4	-26,7
Thessalia	3.831	3.138	-18,1	1.074,2	1.074,2	-32,7	4.188,3	2.584,7	-38,3
Ipiros	2.053	1.979	-3,6	576,1	576,1	3,8	2.210,0	2.273,6	2,9
Ionian Islands	2.238	1.993	-10,9	432,7	432,7	-18,9	1.472,6	1.210,8	-17,8
Western Greece	4.218	4.453	5,6	1.069,2	1.069,2	-19,9	4.182,6	3.054,9	-27,0
Central Greece	4.671	4.105	-12,1	1.094,0	1.094,0	-18,8	4.591,2	3.475,0	-24,3
Peloponissos	5.126	4.679	-8,7	1.259,1	1.259,1	-21,8	4.564,8	3.445,3	-24,5
Attiki	16.743	14.589	-12,9	3.714,3	3.714,3	-22,7	13.891,3	10.500,6	-24,4
North Egeo	1.745	1.435	-17,8	259,1	259,1	-24,1	916,8	650,7	-29,0
South Egeo	3.487	3.348	-4,0	698,1	698,1	-10,7	2.391,0	2.026,4	-15,2
Kriti	4.045	3.357	-17,0	1.218,6	1.218,6	-19,3	4.361,7	3.660,0	-16,1
Greece, Total	60.390	53.845	-10,8	14.821,0	14.821,0	-20,3	57.285,5	43.217,4	-24,6

* Provisional data

Table 4. Private Building Activity , by Region, for the period July 2008 - June 2009 and July 2009 - June 2010 *

Region	Number of building permits			Surface (in thousand m ²)			Volume (in thousand m ³)		
	July-June		Change (%)	July-June		Change (%)	July-June		Change (%)
	2008/2009	2009/2010		2008/2009	2009/2010		2008/2009	2009/2010	
E. Makedonia and Thraki	3.039	2.736	-10,0	690,4	571,4	-17,2	2.559,5	2.074,8	-18,9
Central Makedonia	7.824	6.883	-12,0	2.256,7	1.766,2	-21,7	9.998,7	6.673,7	-33,3
Western Makedonia	1.149	942	-18,0	344,5	254,3	-26,2	1.395,6	945,1	-32,3
Thessalia	3.723	3.103	-16,7	1.037,5	693,9	-33,1	3.997,0	2.454,2	-38,6
Ipiros	2.022	1.953	-3,4	554,0	575,3	3,9	2.126,5	2.170,9	2,1
Ionian Islands	2.228	1.978	-11,2	430,2	348,3	-19,0	1.462,9	1.200,9	-17,9
Western Greece	4.193	4.425	5,5	1.019,0	840,5	-17,5	3.973,5	2.975,6	-25,1
Central Greece	4.636	4.079	-12,0	1.051,1	850,7	-19,1	4.401,3	3.207,0	-27,1
Peloponissos	5.083	4.641	-8,7	1.239,5	969,1	-21,8	4.490,2	3.387,8	-24,6
Attiki	16.717	14.573	-12,8	3.704,8	2.853,1	-23,0	13.855,1	10.413,0	-24,8
North Egeo	1.734	1.424	-17,9	259,1	195,5	-24,5	916,8	645,8	-29,6
South Egeo	3.474	3.341	-3,8	687,3	617,9	-10,1	2.347,8	2.008,3	-14,5
Kriti	4.017	3.319	-17,4	1.202,3	943,8	-21,5	4.290,3	3.467,5	-19,2
Greece, Total	59.839	53.397	-10,8	14.476,5	11.480,0	-20,7	55.815,1	41.624,5	-25,4

* Provisional data

Table 5. Total Building Activity (Private-Public), by Region, for the period January- June in 2009 and 2010 *

Region	Number of building permits			Surface (in thousand m ²)			Volume (in thousand m ³)		
	January-June		Change (%)	January-June		Change (%)	January-June		Change (%)
	2009	2010		2009	2010		2009	2010	
E. Makedonia and Thraki	1.392	1.230	-11,6	306	265	-13,4	1.131	978	-13,5
Central Makedonia	3.564	3.245	-9,0	950	888	-6,5	4.380	3.168	-27,7
Western Makedonia	491	411	-16,3	108	119	9,4	386	397	2,9
Thessalia	1.690	1.507	-10,8	422	320	-24,2	1.601	1.128	-29,6
Ipiros	976	922	-5,5	257	208	-18,8	929	758	-18,4
Ionian Islands	950	908	-4,4	170	163	-4,3	602	558	-7,2
Western Greece	2.044	2.072	1,4	443	386	-12,8	1.685	1.330	-21,0
Central Greece	2.130	1.883	-11,6	504	376	-25,6	2.104	1.377	-34,5
Peloponissos	2.276	2.322	2,0	535	478	-10,5	1.820	1.602	-12,0
Attiki	7.706	6.952	-9,8	1.655	1.156	-30,2	6.029	4.094	-32,1
North Egeio	798	670	-16,0	100	83	-17,8	328	268	-18,3
South Egeio	1.460	1.429	-2,1	262	278	6,1	873	882	1,1
Kriti	1.841	1.485	-19,3	547	410	-25,1	1.936	1.568	-19,0
Greece, Total	27.318	25.036	-8,4	6.259,5	5.128,9	-18,1	23.803,2	18.108,1	-23,9

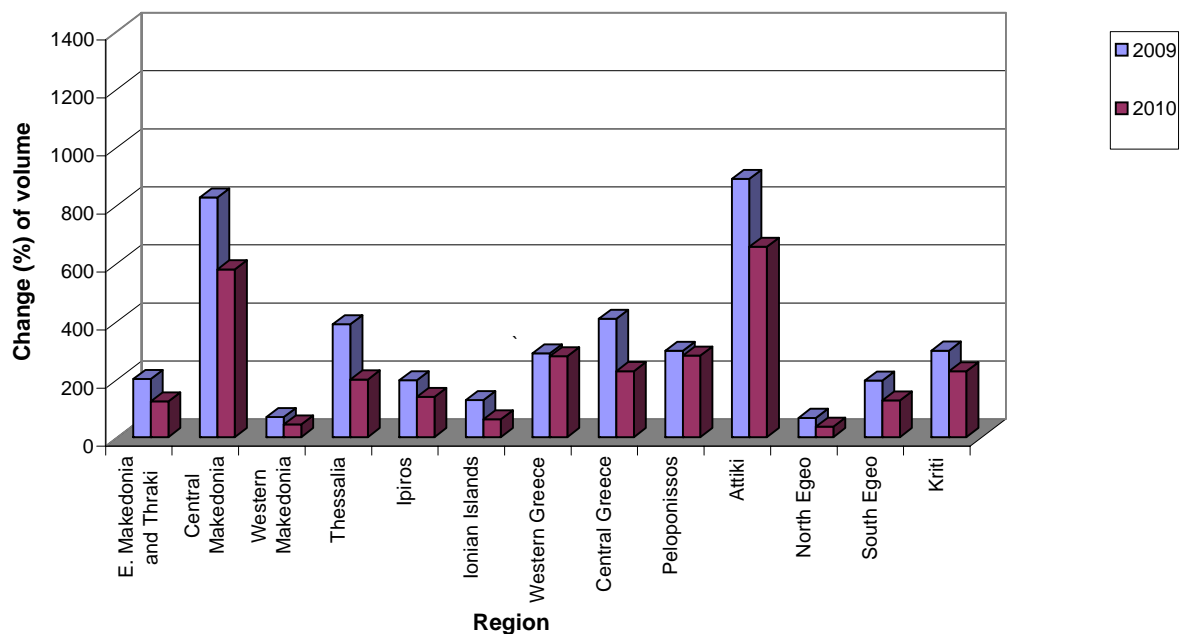
* Provisional data

Table 6. Private Building Activity , by Region, for the period January- June in 2009 and 2010 *

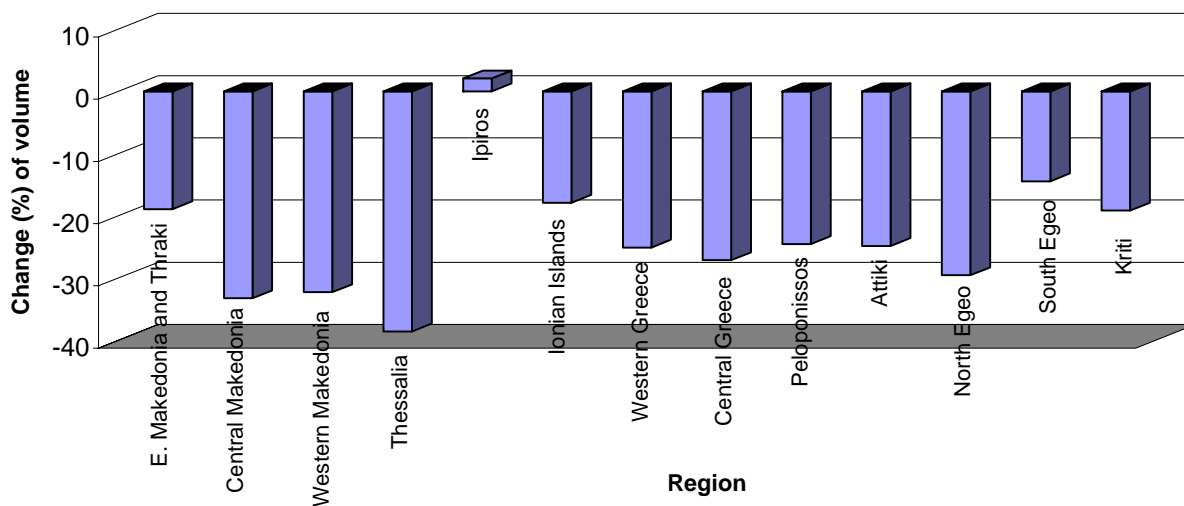
Region	Number of building permits			Surface (in thousand m ²)			Volume (in thousand m ³)		
	January-June		Change (%)	January-June		Change (%)	January-June		Change (%)
	2009	2010		2009	2010		2009	2010	
E. Makedonia and Thraki	1.392	1.230	-11,6	306	265	-13,4	1.131	978	-13,5
Central Makedonia	3.564	3.245	-9,0	950	888	-6,5	4.380	3.168	-27,7
Western Makedonia	491	411	-16,3	108	119	9,4	386	397	2,9
Thessalia	1.690	1.507	-10,8	422	320	-24,2	1.601	1.128	-29,6
Ipiros	976	922	-5,5	257	208	-18,8	929	758	-18,4
Ionian Islands	950	908	-4,4	170	163	-4,3	602	558	-7,2
Western Greece	2.044	2.072	1,4	443	386	-12,8	1.685	1.330	-21,0
Central Greece	2.130	1.883	-11,6	504	376	-25,6	2.104	1.377	-34,5
Peloponissos	2.276	2.322	2,0	535	478	-10,5	1.820	1.602	-12,0
Attiki	7.706	6.952	-9,8	1.655	1.156	-30,2	6.029	4.094	-32,1
North Egeio	798	670	-16,0	100	83	-17,8	328	268	-18,3
South Egeio	1.460	1.429	-2,1	262	278	6,1	873	882	1,1
Kriti	1.841	1.485	-19,3	547	410	-25,1	1.936	1.568	-19,0
Greece, Total	27.318	25.036	-8,4	6.259,5	5.128,9	-18,1	23.803,2	18.108,1	-23,9

* Provisional data

Table 2. Private Building Activity, by Region, on June 2009 and 2010*



Graph 2. Private Building activity. Change (%) of building volume, by Region, for the period July 2008-June 2009 and July 2009-June 2010



EXPLANATORY NOTES

Building Activity Survey	The Building Activity Survey provides data on monthly and yearly basis, since 1964. The purpose of this survey is to register the total amount of building permits issued by the relevant administrative authorities, which are devolved to complete the questionnaire. The survey covers all the features of building activity such as the type of building permit, the type of construction, the type and the characteristics of the building and its complementary areas, as well as building usage, surface, volume and value.
Legal Framework	The survey is totally harmonized with the European legislation. The primary legislative act is Regulation (EU) 1165/1998, as it was amended according to Regulation (EU) 1158/2005.
Reference Period	01/6/2010 to 30/6/2010
Coverage	The survey is exhaustive and covers the total amount of issued building permits across the country.
Definitions	<p>Building Permit refers to all types of building permits. These are permits for new building or addition, repair, renovation, demolition, legalization, amendment and modification of a building.</p> <p>The denotation of built-property is equal to the building.</p> <p>Building is regarded as every permanent and independent structure, which has walls and a roof and consists of one or more rooms and complementary areas. As a rule, buildings feature four walls. However, a construction that is open from one or even two sides will be considered a building, as long as it has a roof.</p> <p>New building is any built-property raised on an uncovered site or in place of an old building that was demolished.</p> <p>Building Addition is considered to be every construction that adds building volume (space) to an existing building, be it in surface, height or a combination of both and creates a residence, a shop or both.</p> <p>Building volume (the net building volume) refers to the area that is included between the external surface of the external walls, the lowest level (the basement or the sub-basement, if it exists) and the roof of the building. If there is an open ground floor not enclosed within walls between the lower floor and the roof, its volume is taken into account. The relevant authorities calculate the volume of the building during the issuing of the building permit.</p> <p>Surface of new-built property is considered to be the sum of each floor space along with the outer space of the outer walls.</p>
General Remark	Any delineation that may occur between the sum of sub totals and the totals is due to rounding.
References	More information (tables, questionnaires, methodology) with regards to the Building Activity Survey can be found in EL.STAT's web-site: www.statistics.gr , under the links: Statistical Themes à Building and Constructions à Building Activity or Constructions.