



SURVEY OF BUILDING ACTIVITY: FEBRUARY 2010

PRESS RELEASE

Decrease of the volume of Total Building Activity by 45,0%.

In February 2010 total Building Activity (private-public), in the whole country, which is calculated by the number of building permits, amounted to 3.465. This figure corresponds to 627,8 thousand m² of surface and 2.341,5 thousand m³ of volume, which shows a decrease of 23,1%, in the number of building permits, 41,0% in surface and 45,0% in volume as compared to the same month in 2009 (Table 1).

Private Building Activity, in the whole country, summed to 3.439 building permits, which correspond to 617,9 thousand m² of surface and 2.300,8 thousand m³ of volume. As compared to the same month of 2009 (Table 2), there is a decrease in the number of building permits by 22,9%, in surface by 38,8% and in volume by 42,8% (Table 2).

Public Building Activity in the whole country in February 2010, amounted to 26 building permits, which correspond to 9,8 thousand m² of surface and 40,7 thousand m³ of volume. The contribution of Public Building Activity in the total building activity, in February 2010, is 1,7%.

During the period January-February 2010, the total amount of Building Activity (private-public) amounted to 7.794 building permits, which correspond to 1.830,1 thousand m² of surface and 6.611,8 thousand m³ of volume. In comparison to the same period in 2009 (Table 3), there was a decrease of 6,6% in the number of building permits, 3,9% in surface and 12,5% in volume (Table 3).

During the period January - February 2010, the Private Building Activity in the whole country, indicated a decrease in the number of building permits by 6,4%, in surface by 2,0% and in volume by 10,6%, as compared to the same period of 2009 (Table 4).

The percentage contribution of the Public Building Activity in the total building volume, for the same period of 2010, is 1,7%.

Please, note that the applications and issuing of building permits are affected by amendments to the legislation regarding the building terms and conditions and to the General Building Code.

Information:

Directorate of Secondary Sector Statistics
Unit of Construction and Environment Statistics
Papanagnou Ioanna
Tel. : 210 485 2045
Fax : 210 485 2456
e-mail : papanag@statistics.gr

Table 1. Total Building Activity (Private-Public), by Region, for the period of January - February in 2009 and 2010*

Region	Number of building permits			Surface (in thousand m ²)			Volume (in thousand m ³)		
	February		Change (%)	February		Change (%)	February		Change (%)
	2009	2010		2009	2010		2009	2010	
E. Makedonia and Thraki	253	180	-28,9	56,0	45,9	-18,0	213,9	184,5	-13,8
Central Makedonia	561	425	-24,2	132,1	80,5	-39,1	576,4	308,5	-46,5
Western Makedonia	76	55	-27,6	17,0	10,9	-35,7	66,7	46,7	-30,0
Thessalia	255	218	-14,5	70,7	45,7	-35,4	244,6	166,0	-32,1
Ipiros	155	146	-5,8	44,9	26,3	-41,4	155,4	92,8	-40,3
Ionian Islands	154	144	-6,5	26,8	28,6	6,7	93,6	98,1	4,8
Western Greece	329	298	-9,4	112,4	60,1	-46,5	489,8	200,0	-59,2
Central Greece	358	246	-31,3	83,3	56,6	-32,1	505,5	190,9	-62,2
Peloponnissos	332	279	-16,0	82,2	55,4	-32,6	290,9	211,7	-27,2
Attiki	1.348	904	-32,9	289,1	105,2	-63,6	1.107,5	381,5	-65,6
Northern Egeo	133	113	-15,0	13,1	11,7	-11,1	46,4	37,6	-18,8
Southern Egeo	279	237	-15,1	49,3	36,0	-27,0	167,6	121,7	-27,4
Kriti	275	220	-20,0	87,1	64,8	-25,6	297,5	301,4	1,3
Greece, Total	4.508	3.465	-23,1	1.064,1	627,8	-41,0	4.255,8	2.341,5	-45,0

* Provisional Data

Table 2. Total Building Activity per Region in February of 2009 and 2010*

Region	Number of building permits			Surface (in thousand m ²)			Volume (in thousand m ³)		
	February		Change (%)	February		Change (%)	February		Change (%)
	2009	2010		2009	2010		2009	2010	
E. Makedonia and Thraki	252	175	-30,6	56,0	41,6	-25,7	213,9	168,9	-21,0
Central Makedonia	544	420	-22,8	123,8	80,5	-35,0	529,6	308,4	-41,8
Western Makedonia	73	54	-26,0	15,0	10,9	-27,1	58,5	46,7	-20,1
Thessalia	249	217	-12,9	68,7	45,3	-34,0	236,0	164,8	-30,2
Ipiros	152	145	-4,6	43,5	26,3	-39,5	148,8	92,8	-37,6
Ionian Islands	153	143	-6,5	26,5	28,5	7,6	91,8	98,1	6,8
Western Greece	325	295	-9,2	79,3	58,5	-26,3	352,8	193,3	-45,2
Central Greece	357	245	-31,4	83,1	56,6	-31,9	504,6	190,9	-62,2
Peloponnissos	330	278	-15,8	78,9	55,3	-29,9	276,8	211,3	-23,6
Attiki	1.347	901	-33,1	289,1	104,1	-64,0	1.107,5	376,7	-66,0
Northern Egeo	127	111	-12,6	12,7	10,7	-15,3	44,9	34,2	-23,7
Southern Egeo	278	236	-15,1	46,7	35,9	-23,3	159,2	121,3	-23,8
Kriti	275	219	-20,4	87,1	63,8	-26,8	297,5	293,3	-1,4
Greece, Total	4.462	3.439	-22,9	1.010,4	617,9	-38,8	4.021,9	2.300,8	-42,8

* Provisional Data

Table 3. Total Building Activity (Private - Public), per region, for the period January -February in 2009 and 2010*

Region	Number of building permits			Surface (in thousand m ²)			Volume (in thousand m ³)		
	January-February		Change (%)	January-February		Change (%)	January-February		Change (%)
	2009	2010		2009	2010		2009	2010	
E. Makedonia and Thraki	459	408	-11,1	107,2	109,8	2,4	400,6	415,1	3,6
Central Makedonia	1.054	953	-9,6	277,5	293,0	5,6	1.414,1	1.041,9	-26,3
Western Makedonia	138	118	-14,5	28,1	29,6	5,4	101,4	131,7	29,9
Thessalia	464	473	1,9	120,2	128,9	7,2	429,8	461,5	7,4
Ipiros	272	284	4,4	75,5	57,7	-23,5	275,3	203,0	-26,2
Ionian Islands	267	276	3,4	45,4	53,4	17,6	156,7	191,6	22,3
Western Greece	626	526	-16,0	174,9	109,0	-37,7	703,0	366,2	-47,9
Central Greece	669	486	-27,4	145,8	116,1	-20,4	748,6	413,0	-44,8
Peloponnissos	647	653	0,9	151,5	164,0	8,2	530,0	610,8	15,2
Attiki	2.445	2.441	-0,2	487,0	501,8	3,1	1.782,9	1.776,2	-0,4
Northern Egeo	244	279	14,3	25,0	41,9	68,1	87,2	144,9	66,1
Southern Egeo	502	483	-3,8	93,6	90,0	-3,8	320,0	310,7	-2,9
Kriti	556	414	-25,5	173,0	134,9	-22,0	607,6	545,2	-10,3
Greece, Total	8.343	7.794	-6,6	1.904,6	1.830,1	-3,9	7.557,3	6.611,8	-12,5

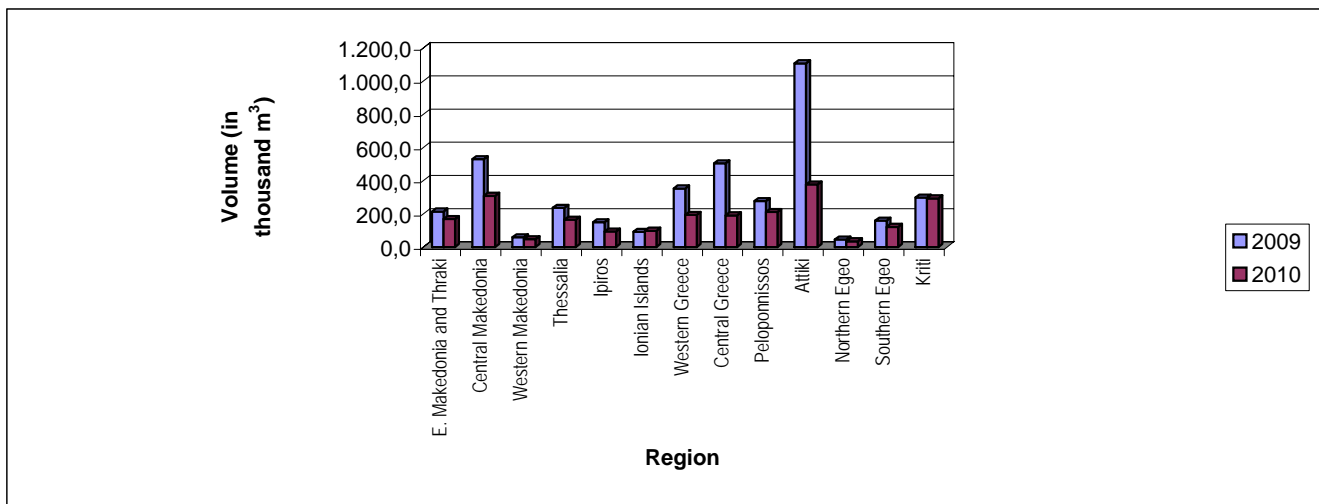
* Provisional Data

Table 4. Private Building Activity, by region, for the period January - February of 2009 and 2010*

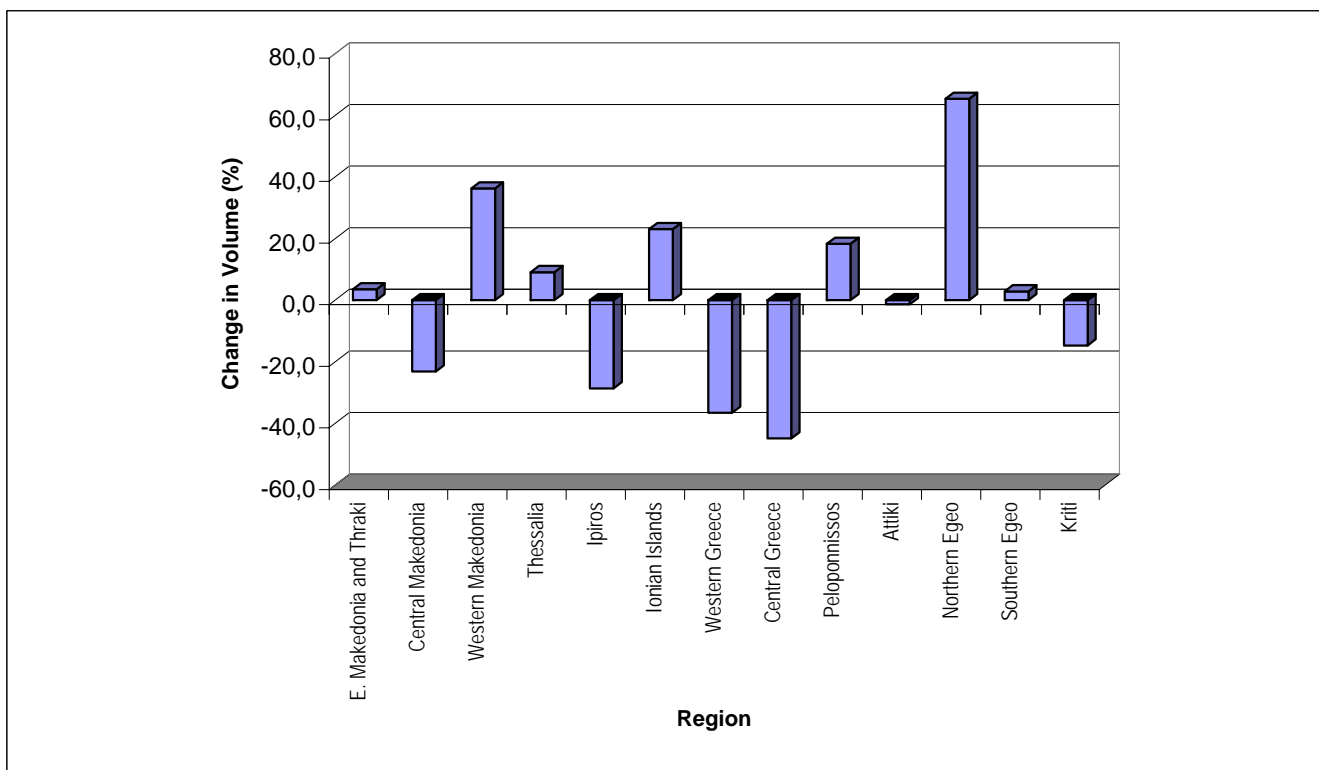
Region	Number of building permits			Surface (in thousand m ²)			Volume (in thousand m ³)		
	January-February		Change (%)	January-February		Change (%)	January-February		Change (%)
	2009	2010		2009	2010		2009	2010	
E. Makedonia and Thraki	454	400	-11,9	103,8	104,9	1,1	384,3	397,8	3,5
Central Makedonia	1.029	938	-8,8	264,9	291,4	10,0	1.349,2	1.035,9	-23,2
Western Makedonia	134	116	-13,4	25,1	27,5	9,5	91,0	123,9	36,2
Thessalia	454	469	3,3	116,8	126,6	8,4	416,1	453,8	9,1
Ipiros	269	277	3,0	74,1	55,3	-25,3	268,7	191,7	-28,7
Ionian Islands	265	274	3,4	45,0	52,9	17,5	154,3	189,9	23,1
Western Greece	622	522	-16,1	141,8	107,2	-24,4	566,1	358,8	-36,6
Central Greece	668	484	-27,5	145,5	115,9	-20,3	747,7	412,0	-44,9
Peloponnissos	639	650	1,7	147,8	163,3	10,4	514,7	608,6	18,2
Attiki	2.442	2.437	-0,2	486,6	494,9	1,7	1.781,2	1.756,0	-1,4
Northern Egeo	237	276	16,5	24,4	40,9	67,7	85,4	141,2	65,3
Southern Egeo	498	482	-3,2	88,3	89,9	1,8	301,7	310,2	2,8
Kriti	556	411	-26,1	173,0	130,2	-24,7	607,6	518,1	-14,7
Greece, Total	8.267	7.736	-6,4	1.837,1	1.800,8	-2,0	7.268,0	6.498,0	-10,6

* Provisional Data

Graph 1. Private Building Activity, per region, in February of 2009 and 2010



Graph 2. Private Building Activity, Rate of change (%) of building volume, per region, for the period January - February, in 2009 and 2010



EXPLANATORY NOTES

Building Activity Survey	The Building Activity Survey provides data on monthly and yearly basis, since 1964. The purpose of this survey is to register the total amount of building permits issued by the relevant administrative authorities, which are devolved to complete the questionnaire. The survey covers all the features of building activity such as the type of building permit, the type of construction, the type and the characteristics of the building and its complementary areas, as well as building usage, surface, volume and value.
Legal Framework	The survey is totally harmonized with the European legislation. The primary legislative act is Regulation (EU) 1165/1998, as it was amended according to Regulation (EU) 1158/2005.
Reference Period	From 01/02/2010 to 28/02/2010.
Coverage	The survey is exhaustive and covers the total amount of issued building permits across the country.
Definitions	<p>Building Permit refers to all types of building permits. These are permits for new building or addition, repair, renovation, demolition, legalization, amendment and modification of a building. The denotation of built-property is equal to the building.</p> <p>Building is regarded as every permanent and independent structure, which has walls and a roof and consists of one or more rooms and complementary areas. As a rule, buildings feature four walls. However, a construction that is open from one or even two sides will be considered a building, as long as it has a roof.</p> <p>New building is any built-property raised on an uncovered site or in place of an old building that was demolished.</p> <p>Building Addition is considered to be every construction that adds building volume (space) to an existing building, be it in surface, height or a combination of both and creates a residence, a shop or both.</p> <p>Building volume (the net building volume) refers to the area that is included between the external surface of the external walls, the lowest level (the basement or the sub-basement, if it exists) and the roof of the building. If there is an open ground floor not enclosed within walls between the lower floor and the roof, its volume is taken into account. The relevant authorities calculate the volume of the building during the issuing of the building permit.</p> <p>Surface of new-built property is considered to be the sum of each floor space along with the outer space of the outer walls.</p>
References	More information (tables, questionnaires, methodology) with regards to the Building Activity Survey can be found in EL STAT s web-site: www.statistics.gr , under the links: Statistical Themes à Building and Constructions à Building Activity or Constructions.