



HELLENIC REPUBLIC

MINISTRY OF ECONOMY AND FINANCE



**GENERAL SECRETARIAT OF
THE NATIONAL STATISTICAL SERVICE
OF GREECE**

Pireaus, 5/11/2009

PRESS RELEASE

BUILDING ACTIVITY

AUGUST 2009

The General Secretariat of the National Statistical Service of Greece publishes provisional data on the Building Activity, on the basis of the building permits issued from the Greek Town-Planning Offices during August 2009.

DECREASE OF THE TOTAL BUILDING ACTIVITY (PRIVATE-PUBLIC) DURING JANUARY - AUGUST 2009 IN COMPARISON WITH THE SAME PERIOD OF 2008

During the period January - August 2009, the magnitude of the total Building Activity (private-public), in the whole Country, measured on the basis of building permits issued, amounted to 36.975 building permits, which correspond to 8.507,0 thousand m² of surface and 32.332,5 thousand m³ of volume, as compared to 43.865 building permits that were issued during the same period of 2008 and corresponded to 11.538,6 thousand m² of surface and 44.811,6 thousand m³ of volume. Thus, there was a decrease in the number of building permits by 15,7%, in surface by 26,3% and in volume by 27,8%. The percentage contribution of the Public Building Activity in the total building volume, for the above period of 2009, is 4,3% (Table 1).

*Table 1. Total Building Activity (Private-Public), by Region, for the period
January - August of 2008 and 2009*

Region	Number of building permits			Surface (in thousand m ²)			Volume (in thousand m ³)		
	January-August			January-August			January-August		
	2008	2009		2008	2009		2008	2009	
E. Makedonia and Thraki	2.071	1.936	-6,5	539,9	424,6	-21,4	2.144,3	1.566,4	-27,0
Central Makedonia	5.840	4.782	-18,1	1.997,0	1.279,0	-36,0	8.990,5	5.460,8	-39,3
Western Makedonia	744	695	-6,6	241,1	180,0	-25,3	1.005,9	699,1	-30,5
Thessalia	2.706	2.206	-18,5	773,6	561,3	-27,4	2.927,4	2.143,7	-26,8
Ipiros	1.521	1.355	-10,9	426,7	374,3	-12,3	1.585,2	1.396,6	-11,9
Ionian Islands	1.733	1.331	-23,2	346,2	238,6	-31,1	1.195,5	827,5	-30,8
Western Greece	3.020	2.880	-4,6	709,7	620,7	-12,5	2.685,3	2.317,2	-13,7
Central Greece	3.241	2.924	-9,8	831,3	736,2	-11,4	3.675,4	3.264,8	-11,2
Peloponnissos	3.667	3.054	-16,7	996,8	703,2	-29,4	3.516,2	2.430,8	-30,9
Attiki	12.590	10.261	-18,5	2.911,6	2.142,2	-26,4	10.755,2	8.001,0	-25,6
Northern Egeo	1.300	1.069	-17,8	223,8	128,2	-42,7	835,2	436,0	-47,8
Southern Egeo	2.503	2.042	-18,4	570,4	375,3	-34,2	1.936,6	1.208,4	-37,6
Kriti	2.929	2.440	-16,7	970,4	743,4	-23,4	3.558,9	2.580,4	-27,5
Greece, Total	43.865	36.975	-15,7	11.538,6	8.507,0	-26,3	44.811,6	32.332,5	-27,8

In August 2009 the magnitude of the total Building Activity (private-public), in the whole Country (Table 2), amounted to 2.874 building permits, which correspond to 650,0 thousand m² of surface and 2.459,1 thousand m³ of volume, as compared to 3.353 building permits that were issued during the same month of 2008 and corresponded to, 965,9 thousand m² of surface and 4.093,8 thousand m³ of volume. Thus, there was a decrease in the number of building permits by 14,3%, in surface by 32,7% and in volume by 39,9%.

The magnitude of the Public Building Activity in August 2009, in the whole Country, amounted to 29 building permits, which correspond to 9,8 thousand m² of surface and 58,3 thousand m³ of volume, as compared to 91 building permits that were issued during the same month of 2008 and corresponded to 11,8 thousand m² of surface and 52,2 thousand m³ of volume. The percentage contribution of the Public Building Activity in the total building activity, in August 2009, is 2,4%.

Table 2. Total Building Activity (Private-Public), by Region, for the month of August of 2008 and 2009

Region	Number of building permits			Surface (in thousand m ²)			Volume (in thousand m ³)		
	August			August			August		
	2008	2009		2008	2009		2008	2009	
E. Makedonia and Thraki	202	230	13,9	55,2	48,3	-12,5	197,5	165,5	-16,2
Central Makedonia	543	360	-33,7	225,2	77,8	-65,4	1.021,3	300,1	-70,6
Western Makedonia	76	69	-9,2	27,8	16,0	-42,6	139,0	62,6	-55,0
Thessalia	303	155	-48,8	61,8	30,1	-51,4	214,3	112,2	-47,6
Ipiros	125	173	38,4	52,5	58,7	11,7	229,2	216,4	-5,6
Ionian Islands	166	125	-24,7	38,2	23,6	-38,3	136,5	83,9	-38,5
Western Greece	280	297	6,1	63,4	60,5	-4,7	253,2	223,9	-11,6
Central Greece	285	256	-10,2	53,8	50,9	-5,4	198,6	210,5	6,0
Peloponnissos	297	226	-23,9	78,9	54,7	-30,7	308,9	190,0	-38,5
Attiki	492	399	-18,9	175,8	83,8	-52,3	906,8	383,8	-57,7
Northern Egeo	147	80	-45,6	34,8	10,6	-69,4	136,6	43,1	-68,4
Southern Egeo	210	245	16,7	40,6	44,3	9,3	127,7	138,1	8,1
Kriti	227	259	14,1	57,8	90,7	56,8	224,1	329,2	46,9
Greece, Total	3.353	2.874	-14,3	965,9	650,0	-32,7	4.093,8	2.459,1	-39,9

DECREASE OF THE PRIVATE BUILDING ACTIVITY DURING JANUARY - AUGUST 2009 IN COMPARISON WITH THE SAME PERIOD OF 2008

As concerns the Private Building Activity in the whole Country, during the period January - August 2009, there was a decrease in the number of building permits by 15,8%, in surface by 27,7% and in volume by 29,8%, as compared to the same period of 2008 (Table 3).

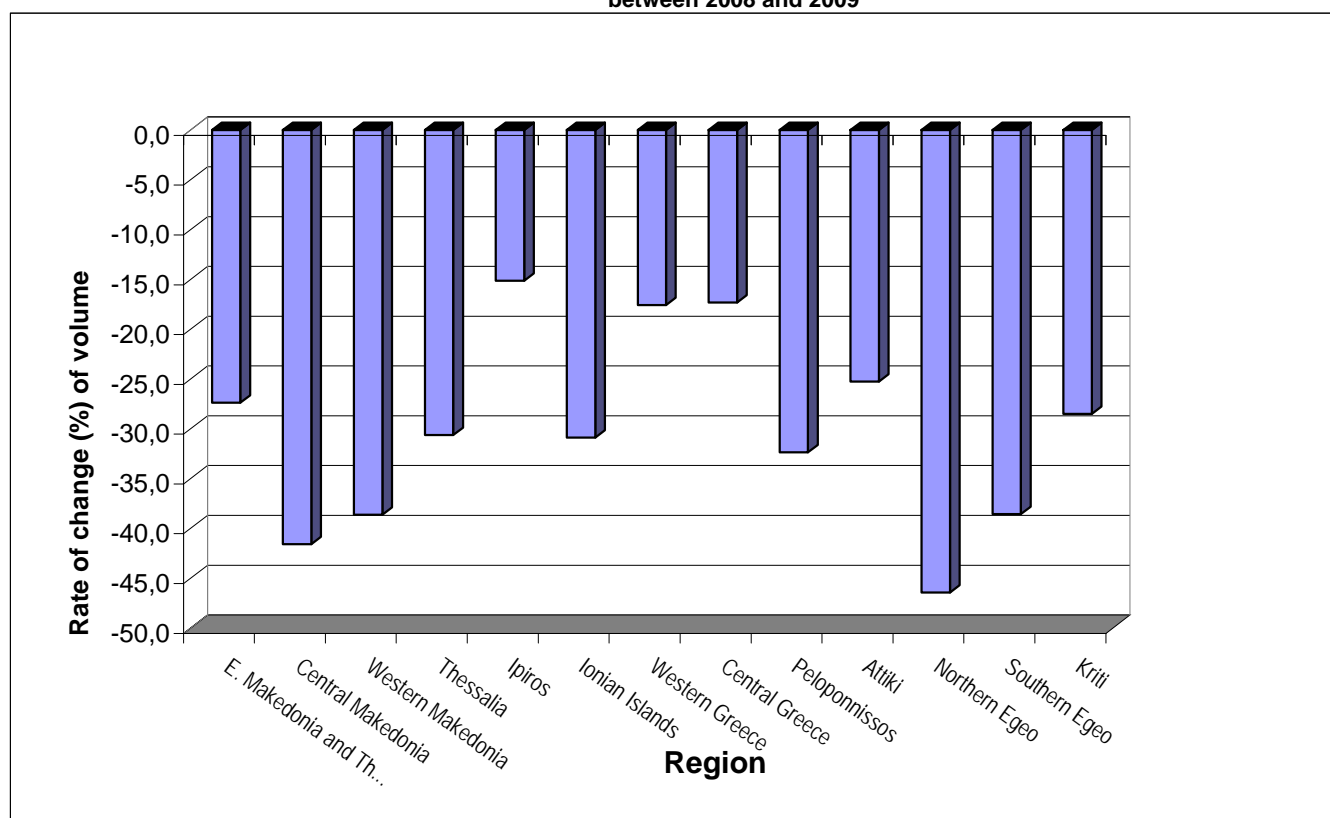
The building volume in the region of Attiki, during January - August 2009, has come up to 7.975,8 thousand m³, as compared to 10.674,2 thousand m³, of the same period of 2008 (decrease by 25,3%).

The building volume in rest of the Country, during January - August 2009, has come up to 22.962,4 thousand m³, as compared to 33.379,9 thousand m³, of the same period of 2008 (decrease by 31,2%).

Table 3. Private Building Activity, by Region, for the period January - August of 2008 and 2009

Region	Number of building permits			Surface (in thousand m ²)			Volume (in thousand m ³)		
	January-August			January-August			January-August		
	2008	2009		2008	2009		2008	2009	
E. Makedonia and Thraki	2.032	1.895	-6,7	518,5	402,8	-22,3	2.031,6	1.475,0	-27,4
Central Makedonia	5.764	4.688	-18,7	1.959,2	1.212,9	-38,1	8.846,2	5.165,5	-41,6
Western Makedonia	731	672	-8,1	235,8	160,5	-31,9	969,0	594,4	-38,7
Thessalia	2.591	2.176	-16,0	761,2	526,0	-30,9	2.877,3	1.995,5	-30,6
Ipiros	1.508	1.331	-11,7	418,8	355,5	-15,1	1.557,3	1.321,3	-15,2
Ionian Islands	1.727	1.321	-23,5	344,5	236,1	-31,5	1.185,5	819,3	-30,9
Western Greece	3.010	2.863	-4,9	697,5	584,5	-16,2	2.625,9	2.163,6	-17,6
Central Greece	3.225	2.886	-10,5	811,6	686,6	-15,4	3.566,2	2.947,8	-17,3
Peloponnissos	3.647	3.020	-17,2	991,4	688,0	-30,6	3.496,2	2.364,0	-32,4
Attiki	12.562	10.245	-18,4	2.891,7	2.138,3	-26,1	10.674,2	7.975,8	-25,3
Northern Egeo	1.295	1.058	-18,3	213,8	123,7	-42,1	783,6	419,5	-46,5
Southern Egeo	2.495	2.034	-18,5	565,6	368,2	-34,9	1.918,2	1.178,4	-38,6
Kriti	2.916	2.424	-16,9	960,9	732,1	-23,8	3.523,0	2.518,0	-28,5
Greece, Total	43.503	36.613	-15,8	11.370,2	8.215,3	-27,7	44.054,0	30.938,2	-29,8

Graph 1. Private Building Activity by Region
Rate of change (%) of building volume, by Region, for the period January - August, between 2008 and 2009

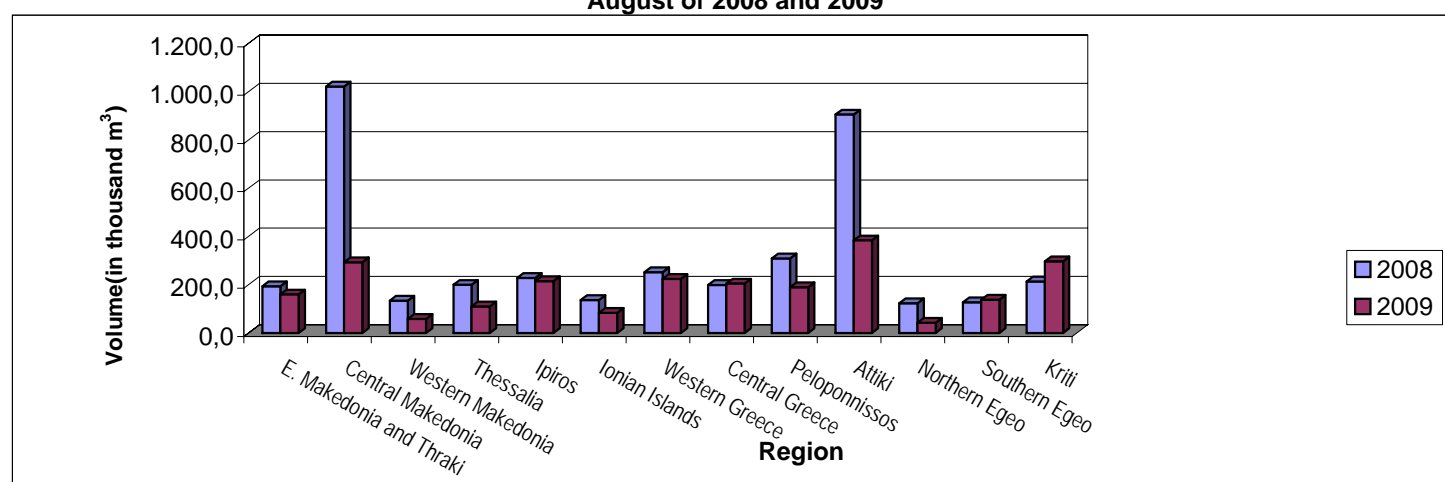


In August 2009 the magnitude of the Private Building Activity, in the whole Country, amounted to 2.845 building permits, which correspond to 640,2 thousand m² of surface and 2.400,8 thousand m³ of volume, as compared to 3.262 building permits that were issued during August 2008 and corresponded to 954,1 thousand m² of surface and 4.041,7 thousand m³ of volume. Thus, there was a decrease in the number of building permits by 12,8%, in surface by 32,9% and in volume by 40,6% (Table 4).

Table 4. Private Building Activity, by Region, for the month of August of 2008 and 2009

Region	Number of building permits			Surface (in thousand m ²)			Volume (in thousand m ³)		
	August			August			August		
	2008	2009		2008	2009		2008	2009	
E. Makedonia and Thraki	200	225	12,5	54,3	47,0	-13,5	193,9	160,0	-17,5
Central Makedonia	538	355	-34,0	225,0	76,6	-66,0	1.020,6	293,5	-71,2
Western Makedonia	74	67	-9,5	26,4	14,9	-43,4	133,7	58,9	-56,0
Thessalia	235	154	-34,5	57,7	29,8	-48,3	199,8	110,3	-44,8
Ipiros	121	170	40,5	52,2	58,2	11,6	228,2	214,7	-5,9
Ionian Islands	166	124	-25,3	38,2	23,6	-38,4	136,5	83,8	-38,6
Western Greece	279	296	6,1	63,1	60,5	-4,2	252,0	223,9	-11,2
Central Greece	284	252	-11,3	53,8	49,8	-7,4	198,6	205,0	3,2
Peloponnisos	297	224	-24,6	78,9	54,7	-30,7	308,9	190,0	-38,5
Attiki	490	399	-18,6	175,0	83,8	-52,1	904,8	383,8	-57,6
Northern Egeo	146	79	-45,9	33,8	10,5	-69,0	123,6	42,2	-65,9
Southern Egeo	209	244	16,7	40,6	44,3	9,3	127,7	138,1	8,1
Kriti	223	256	14,8	55,2	86,5	56,7	213,2	296,6	39,1
Greece, Total	3.262	2.845	-12,8	954,1	640,2	-32,9	4.041,7	2.400,8	-40,6

Graph 2. Private Building Activity, by Region, for the month of August of 2008 and 2009



Summary metadata: The data above refer to the authorized building activity (public and private).

Specifically, the above results refer to data on building permits totally issued by the competent authorities. Such data are collected through a special monthly survey, the Building Permits Survey. The data are collected from administrative sources (Town Planning Offices). External engineers, simultaneously with the issue of a building permit, fill in the relevant questionnaire, properly designed for the survey.

A building permit is an authorization to start work on a building project. Thus, a building permit is the final stage of planning and building authorizations, prior to the start of work.

The legal basis of the survey is the Law 2396/96 (concerning the access of the General Secretariat of the National Statistical Service of Greece to administrative sources and archives and the regulation of issues regarding census surveys and statistical works) and the following STS Regulations:

- Council Regulation (EC) No 1165/98 (concerning short-term statistics)
- Regulation (EC) of the European Parliament and of the Council No 1158/05 (amending Council Regulation (EC) No 1165/98).

Contact person: Ioanna Papanagnou

Tel: 0030 210 4852045

Fax: 0030 210 4852456

e-mail: papanag@statistics.gr