



PRESS RELEASE

Issuing of Motor Vehicle Circulation Licences: September 2015

The Hellenic Statistical Authority announces that in September 2015, 8.249 road motor cars (both new and used from abroad) were put into circulation for the first time, recording a 6,7% increase compared with the corresponding month of 2014 when the number of road motor cars was 7.730. In September 2014, a 44,3% increase had been observed in comparison with the corresponding month of 2013 (Table1, Chart1). A total number of 5.509 new cars were put into circulation in September 2015 compared with 5.374 in September 2014, recording an 2,5% increase.

The new motorcycles (over 50cc) that were put into circulation for the first time in September 2015 amounted to 3.293, against 3.430 in 2014, thus recording a 4,0% decrease. In September 2014, a 21,2% increase had been observed in comparison with the corresponding month of 2013 (Table 1, Chart1). Out of the above motorcycles 3.124 were new, while the corresponding figure in September 2014 was 3.252, recording a 3,9% decrease.

During the period January - September 2015, 89.891 road motor cars (both new and used from abroad) were put into circulation for the first time, representing a 17,3% increase compared to the corresponding period of 2014 when the number of road motor cars was 76.618. During the period January - September 2014 an increase of 29,1% had been observed in comparison with the corresponding period of 2013 (Table2, Charts 2,3). Out of the above number of road motor cars that were put into circulation, from January to September 2015, 62.236 were new, while the corresponding number during the respective period of 2014 was 57.153, recording a 8,9% increase.

During the period January - September 2015 the circulation of new motorcycles (over 50cc) amounted to 28.834, against 28.251 in 2014, thus representing a 2,1% increase. An increase of 8,7% had been observed during the period January - September 2014 in comparison with the corresponding period of 2013 (Table 2, Charts 2,3). A total number of 27.107 new motorcycles were put into circulation, from January to September 2015, compared with 26.899 during the corresponding period of 2014, recording a 0,8% increase.

Information:

Division of Statistics on Trade and Services
Section of Transport, Communications and Mass Media

Konstantinos Menexes

Telephon : (0030) 213 1352500

FAX : (0030) 213 1352496

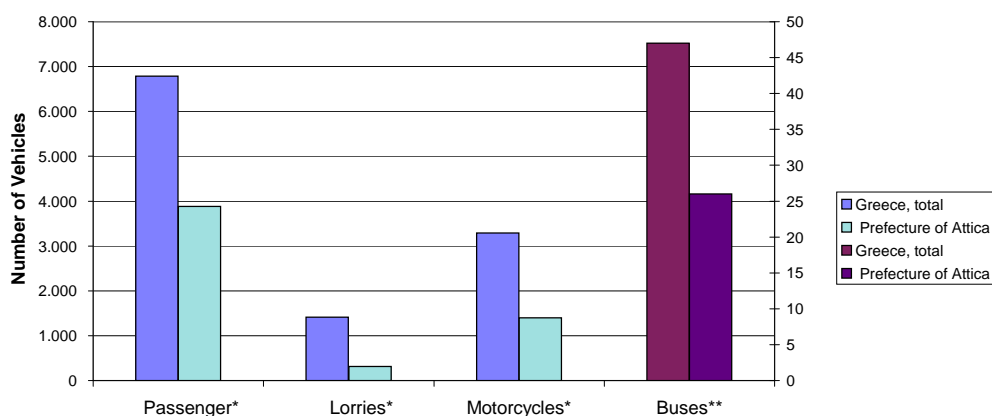
e-mail : k.menexes@statistics.gr

**Table 1. Road motor vehicles, both new and used, put into circulation for the first time in Greece:
September 2013 - 2015**

Category of Road Motor Vehicles	September						Change (%)			
	2015		2014		2013		2015/2014		2014/2013	
	Total	Used	Total	Used	Total	Used	Total	Used	Total	Used
Greece, total										
Road Motor Vehicles, total	11.542	2.909	11.160	2.534	8.185	1.368	3,4	14,8	36,3	85,2
1. Road motor cars	8.249	2.740	7.730	2.356	5.356	1.260	6,7	16,3	44,3	87,0
Passenger Cars	6.789	1.691	6.341	1.304	4.335	519	7,1	29,7	46,3	151,3
Buses	47	40	84	80	24	19	-44,0	-50,0	250,0	321,1
Lorries	1.413	1.009	1.305	972	997	722	8,3	3,8	30,9	34,6
2. Motorcycles > 50 cc	3.293	169	3.430	178	2.829	108	-4,0	-5,1	21,2	64,8
Prefecture of Attica										
Road Motor Vehicles, total	5.621	822	5.552	657	4.191	292	1,2	25,1	32,5	125,0
1. Road motor cars	4.219	793	4.065	626	2.913	275	3,8	26,7	39,5	127,6
Passenger Cars	3.879	619	3.730	451	2.653	159	4,0	37,3	40,6	183,6
Buses	26	21	23	20	7	5	13,0	5,0	228,6	300,0
Lorries	314	153	312	155	253	111	0,6	-1,3	23,3	39,6
2. Motorcycles > 50 cc	1.402	29	1.487	31	1.278	17	-5,7	-6,5	16,4	82,4

Category of Road Motor Vehicles	Change (%)					
	Average Oct. 2014 - Sep. 2015		Average Oct. 2013 - Sep. 2014		Average Oct. 2014 - Sep. 2015 / Average Oct. 2013 - Sep. 2014	
	Total	Used	Total	Used	Total	Used
Greece, total						
Road Motor Vehicles, total	12.483	3.037	10.739	2.054	16,2	47,9
1. Road motor cars	9.636	2.868	7.989	1.924	20,6	49,1
Passenger Cars	7.972	1.701	6.629	952	20,3	78,7
Buses	59	49	61	46	-3,3	6,5
Lorries	1.605	1.118	1.299	926	23,6	20,7
2. Motorcycles > 50 cc	2.847	169	2.750	130	3,5	30,0

Graph 1. New registrations of motor vehicles: September 2015



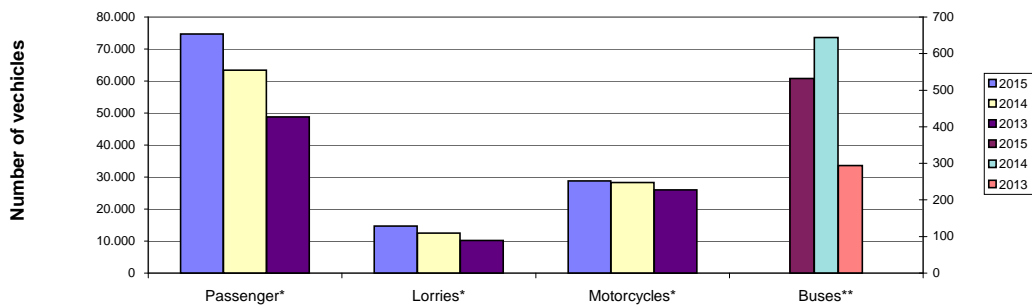
* For Passenger motor vehicles, Lorries and Motorcycles see the left axis scale

** For Buses see the right axis scale

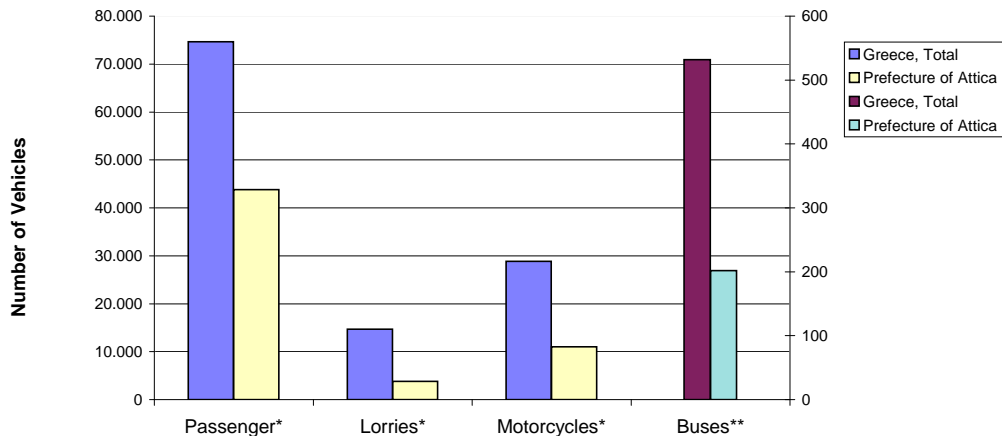
**Table 2. Road motor vehicles, both new and used, put into circulation for the first time in Greece:
Jan. - Sep. 2013 - 2015**

Category of Road Motor Vehicles	January - September						Change (%)			
	2015		2014		2013		2015/2014		2014/2013	
	Total	Used	Total	Used	Total	Used	Total	Used	Total	Used
Greece, total										
Road Motor Vehicles, total	118.725	29.382	104.869	20.817	85.360	13.600	13,2	41,1	22,9	53,1
1. Road motor cars	89.891	27.655	76.618	19.465	59.366	12.558	17,3	42,1	29,1	55,0
Passenger Cars	74.662	16.768	63.443	9.991	48.822	4.846	17,7	67,8	29,9	106,2
Buses	532	429	644	491	294	223	-17,4	-12,6	119,0	120,2
Lorries	14.697	10.458	12.531	8.983	10.250	7.489	17,3	16,4	22,3	19,9
2. Motorcycles > 50 cc	28.834	1.727	28.251	1.352	25.994	1.042	2,1	27,7	8,7	29,8
Prefecture of Attica										
Road Motor Vehicles, total	58.837	7.744	51.745	5.030	42.125	2.771	13,7	54,0	22,8	81,5
1. Road motor cars	47.840	7.458	40.919	4.819	31.745	2.598	16,9	54,8	28,9	85,5
Passenger Cars	43.809	5.619	37.440	3.156	29.363	1.470	17,0	78,0	27,5	114,7
Buses	202	156	255	169	97	67	-20,8	-7,7	162,9	152,2
Lorries	3.829	1.683	3.224	1.494	2.285	1.061	18,8	12,7	41,1	40,8
2. Motorcycles > 50 cc	10.997	286	10.826	211	10.380	173	1,6	35,5	4,3	22,0

**Graph 2. New motor vehicle circulation licences: comparative data
January - September 2013, 2014, 2015**



Graph 3. New registrations of motor vehicles: January - September 2015

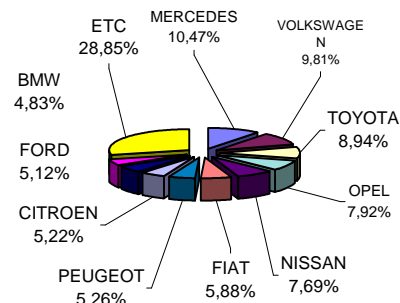


* For Passenger motor vehicles, Lorries and Motorcycles see the left axis scale
 ** For the Buses see the right axis scale

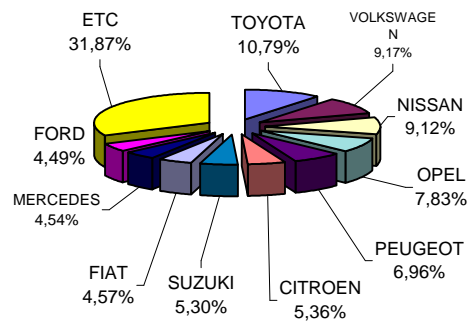
**Table 3. Sales of new and used passenger cars by make:
September and January - September 2015**

Makes	Passenger cars			
	September		Jan. - Sep.	
	new	used	new	used
ALFA LANCIA	-	-	-	1
ALFA ROMEO	47	9	276	99
AUDI	206	32	2.108	409
AUSTIN-ROVER	-	-	-	1
BENTLEY	-	1	-	1
BMW	246	24	2.045	484
CADILLAC	-	-	-	2
CHEVROLET	-	-	2	18
CHRYSLER	-	-	-	6
CITROEN	266	89	3.101	865
DACIA	15	-	242	33
DAEWOO	-	-	1	11
DAIHATSU	-	5	-	44
DETHLEFFS	-	4	-	26
DODGE	-	-	-	1
FERRARI	-	-	-	3
FIAT	300	143	2.645	1.241
FIAT - PINIFARINA	-	-	-	1
FIAT-IVECO	-	-	-	1
FORD	261	116	2.602	1.298
GM KOREA (CHEVROLET)	19	3	395	37
HOBBY	-	-	-	1
HONDA	37	6	386	76
HUMMER	-	-	-	1
HYUNDAI	201	9	2.451	208
JAGUAR	3	2	3	6
JEEP	56	3	453	51
KIA	78	18	1.176	127
KTM	-	-	-	1
LAMBORGHINI	-	-	-	1
LANCIA	9	10	112	56
LAND ROVER	2	6	30	122
LEXUS	8	5	61	28
LEYLAND	-	1	-	1
MASERATI	-	-	-	1
MAZDA	-	13	-	89
MERCEDES	534	73	2.626	1.148
MERCEDES Z.MANTOS	9	-	32	1
MG ROVER	-	-	-	1
MIA	-	-	-	1
MINI	111	25	918	200
MITSUBISHI	27	2	209	102
NISSAN	392	48	5.282	494
OPEL	404	301	4.533	2.909
PEUGEOT	268	75	4.030	771
PORSCHE	1	5	18	85
RAGE	-	1	-	1
RENAULT	87	77	2.160	670
ROVER	-	-	-	4
SAAB	-	-	-	7
SEA / MOBILVETT	-	-	-	9
SEAT	68	11	1.319	103
SH AUTO	-	-	1	-
SKODA	101	35	1.913	245
SMART	47	118	554	972
SSANGYONG	1	-	13	-
SUBARU	4	1	30	15
SUZUKI	230	59	3.067	499
TALBOT	-	-	-	1
THINK	-	1	-	1
TOYOTA	456	247	6.249	1.968
TRIUMPH	-	-	-	1
VOLKSWAGEN	500	100	5.306	1.072
VOLVO	104	13	1.545	137
TOTAL	5.098	1.691	57.894	16.768

**Graph 4. Sales of new passenger cars:
September 2015**



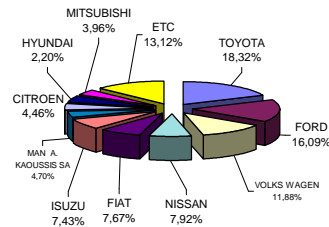
**Graph 5. Sales of new passenger cars:
January - September 2015**



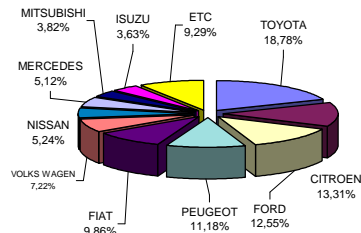
**Table 4. Sales of new and used lorries by make:
September and January - September 2015**

Makes	Lorries			
	September		Jan. - Sep.	
	new	used	new	used
ASTRA	-	1	-	2
BERLIET	-	-	-	1
BMW	-	-	-	1
CHEVROLET	-	-	-	3
CHRYSLER	-	-	-	1
CITROEN	18	20	564	263
CITROEN STATHIS	-	-	1	-
CITROEN SMYRLIADIS	-	-	2	-
DACIA	-	1	-	18
DAF	1	19	12	185
DAF A. KAOUSSIS SA	1	-	3	-
DAF DYNA TRAILERS S.A	-	-	1	-
DAF HEPHAESTUS	-	-	6	-
DAIHATSU	-	1	-	4
DENNIS EAGLE	-	-	1	-
DODGE	-	-	-	6
DYNA TRAILERS S.A. (ME	1	-	1	-
FIAT	31	145	418	1.216
FIAT-IVECO	-	3	-	56
FORD	65	117	532	1.151
FORD STATHIS	-	-	1	-
G.M.C.	-	-	-	2
HYUNDAI	-	5	-	43
ISUZU	30	10	154	130
IVECO	2	7	13	97
IVECO HEPHAESTUS	-	-	6	-
IVECO A. KAOUSSIS SA	-	-	9	-
IVECO STATHIS	-	-	2	-
IVECO KOSKERIDIS	2	-	2	-
IVECO MAGIRUS	-	1	-	8
IVECO MAGIRUS ΣΦΑΝΤΟ	-	-	3	-
JEEP	-	-	-	1
KIA	-	2	-	8
LAND ROVER	-	-	-	2
LLOYD	-	1	-	1
MAGIRUS	-	-	-	1
MAHINDRA	-	-	7	1
MAN	-	50	8	431
MAN A. KAOUSSIS SA	19	-	22	-
MAN NIKAS	-	-	1	-
MAN ΤΑΞΙΑΡΧΟΥ	2	-	4	-
MAN ΤΣΙΤΣΟΠΟΥΛΟΣ ΘΕ	-	-	1	-
MAZDA	-	34	-	268
MERCEDES	18	159	217	1.979
MERCEDES A. KAOUSSIS	3	-	17	1
MERCEDES GENNADIOS	-	-	1	-
MERCEDES STATHIS	-	-	6	-
MERCEDES ΔΙΚΤΥΟ ΦΟΡ	1	-	1	-
MERCEDES ΚΑΞΕΚΩ Ο.Ε	-	-	6	-
MERCEDES ΤΑΞΙΑΡΧΟΥ	2	-	2	-
MERCEDES KOSKERIDIS	-	-	1	-
MERCEDES NIKAS	-	-	5	-
MERCEDES SMYRLIADIS	1	-	11	-
MERCEDES A&I ΔΕΡΒΙΣΗΣ	-	-	-	2
MITSUBISHI	16	58	162	550
MITSUBISHI SMYRLIADIS	1	-	2	-
MITSUBISHI Σ.ΜΑΡΚΕΤΟΣ	-	-	1	-
MOSCHOU CRANE	-	-	1	-
MULTICAR	-	-	-	1
NISSAN	32	102	222	1.021
NISSAN SMYRLIADIS	-	-	3	1
OAF	-	1	-	1
OPEL	12	48	124	565
OPEL STATHIS	-	-	1	-
OZETA CLES	-	-	-	1
PEUGEOT	14	16	474	206
PFAU	-	-	-	1
PFAU MERCEDES	-	-	-	1
PIAGGIO	3	1	24	15
PIAGGIO & C SPA A. KAO	-	-	4	-
RAUSCH GMBH & C	-	-	1	-
RENAULT	4	62	34	568
ROMANITAL S.R.L	-	-	-	1
ROVER	-	-	-	3
SAMSUNG	-	-	-	1
SCANIA	2	22	19	241
SCANIA A. KAOUSSIS SA	-	-	1	-
SCANIA KARKAGGELHS	-	-	1	-
SCANIA SMYRLIADIS	-	-	2	-
SCANIA ΕΥΣΤΑΘΙΟΣ ΖΥΓΟ	-	-	1	-
SEAT	1	2	6	11
SKODA	-	8	-	126
SMYRLIADIS FPT Industria	-	-	1	-
SOVAB	-	-	-	1
SSANGYONG	-	-	2	2
STEYER	-	-	-	3
SUZUKI	-	-	-	9
TATA	-	-	-	2
TERBERG	-	-	-	20
TOYOTA	74	34	796	351
VAUXHALL	-	-	-	1
VOLKS WAGEN	48	50	306	560
VOLVO	-	29	10	313
TOTAL	404	1.009	4.239	10.458

Graph 6. Sales of new lorries: September 2015



Graph 7. Sales of new lorries: January - September 2015



**Table 5. Sales of new and used buses by make:
September and January - September 2015**

Makes	Buses			
	September		Jan. - Sep.	
	new	used	new	used
BOVA	-	-	-	25
CITROEN	-	1	-	1
DAF	-	-	-	2
EOS-COACH	-	-	-	1
EVOBUS	-	5	-	33
FIAT	-	-	-	3
FIAT-IVECO	-	1	-	2
FORD	-	-	2	12
G. AUWARTER	-	1	-	3
HIGER (SCANIA)	3	1	6	1
IRISBUS	-	-	-	2
IVECO	-	2	3	7
KASSBOHRER	-	-	-	1
MAN	-	3	-	25
MERCEDES	3	19	17	154
MERCEDES CENTO BUS	-	-	1	-
MERCEDES ERDUMAN	-	-	20	-
MERCEDES PAPADAKIS	-	-	19	-
MERCEDES NIKAS	-	-	16	-
MERCUS	-	-	1	-
NEOPLAN	-	1	-	31
OPEL	-	-	7	-
OTOKAR	1	-	1	-
RENAULT	-	-	-	1
SALVADOR CAETAN	-	-	-	1
SCANIA	-	3	1	29
SETRA	-	2	5	44
SIN MARCA	-	-	-	1
SFAKIANAKIS	-	-	1	-
SOVAB	-	-	-	1
TEMSA	-	1	3	25
VAN HOOL	-	-	-	3
VOLKSWAGEN	-	-	-	11
VOLVO	-	-	-	8
XIAMEN KING LON	-	-	-	2
TOTAL	7	40	103	429

**Graph 8. Sales of new buses:
January - September 2015**

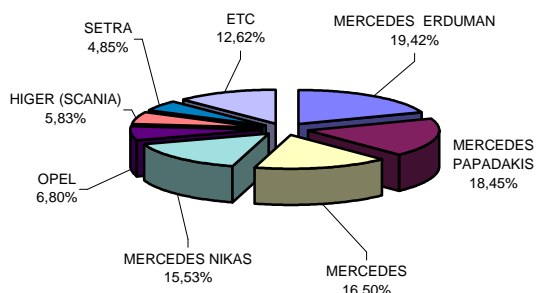
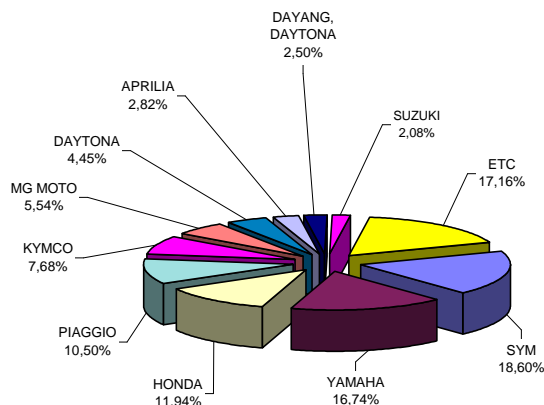


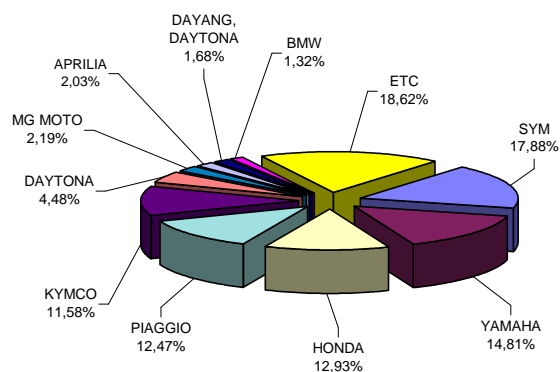
Table 6. Sales of new and used motorcycles by make or manufacturer: September and January - September 2015

Makes	Motorcycles			
	September		Jan. - Sep.	
	new	used	new	used
ACCESS, GOES	1	-	39	-
AEON MOTOR	2	-	57	-
APRILIA	88	5	550	53
APRILIA, PIAGGIO, GILERA	5	-	40	4
ARTIC CAT, MASSE	3	-	29	-
BAOTIAN, SUPERKING, WALTO	2	-	11	1
BASHAN, MONDIAL, YUKI, APAC	4	-	34	-
BETA	1	-	16	-
BMW	41	2	359	37
BOMBARDIER INC.	2	-	19	1
C.P.I. MOTOR CO	1	-	16	-
CFMOTO	2	-	78	-
CFMOTO, MONDIAL, DERRACE	-	-	12	-
CHEETA	3	-	19	-
DAELIM	12	1	75	2
DAYANG, DAYTONA	78	-	456	7
DAYTONA	139	1	1,215	9
DERBI	1	-	35	1
DUCATI	15	-	126	6
FEISHEN, MONDIA	1	-	11	-
GILERA	1	-	11	7
HAOJIANG, SENKE, ZONTES, TAY	5	-	33	-
HARLEY DAVIDSON	7	3	89	25
HER CHEE, ADLY	1	-	10	-
HONDA	373	37	3,506	323
HONLING, SHL, RIYA, TRIMAX, V	1	-	31	-
HUSQVARNA	3	-	34	4
INDIAN MOTORCYC	1	-	9	-
JIAJUE, JINDING, LANYING, PEI	5	-	18	-
JIANSHE	6	-	39	1
JIANSHE, GEMINI	7	-	32	-
JLAJI, HUATIAN, FEILING, TUTU, E	12	-	149	-
JONWAY, SHENKE, JMSTAR, HU	1	-	11	-
JOYNER	-	-	35	2
KAISAR	3	-	12	-
KAWASAKI	19	3	176	29
KEEWAY	1	-	12	1
KENBO	3	-	28	-
KENOS	1	-	10	-
KL	9	-	65	-
KTM	16	1	165	8
KWANG YANG	-	5	-	66
KYMCO	240	17	3,139	136
LIFAN	11	-	77	1
LIFAN, HONLEI, SKYGO, BISAN-LI	7	-	164	-
LINHAI, KUBA	3	-	68	-
LML	3	-	58	2
LONCIN	5	-	38	-
LONCIN, KINLON, DORTON, CCI	2	-	39	-
LONGJIA, RENBO, PRESTO, GINM	1	-	21	-
MALAGUTI	2	-	6	5
MBK	2	2	5	10
MG MOTO	173	-	593	4
MODENAS	20	-	284	1
MOTO GUZZI	2	-	18	2
MOTO S.P.A	-	-	9	-
MV AGUSTA	2	-	12	-
ODES, LIANGZI, BRANSON	-	-	49	-
PEUGEOT	27	2	241	11
PGO	-	-	8	-
PIAGGIO	328	33	3,381	299
PIAGGIO, APRILIA	5	-	66	-
POLARIS	1	-	18	1
QJ, QJIANG, KEEWAY, LEONE,	34	1	283	1
SHANYANG	4	-	30	-
SHINERAY	10	-	87	2
SKYJET	15	-	87	1
SKYTEAM, SASIN, CSR, METALK	11	-	84	1
STANDARD	-	-	11	1
SUZUKI	65	8	327	128
SYM	581	5	4,846	78
TGB	3	1	152	1
TRIUMPH	18	-	121	7
WANGYE, SANBEN, UM, MONDI	7	-	79	-
XGJAO	42	-	315	2
XGJAO, KAISAR, SKYJET, SOKON	26	-	71	2
XINLING, HEROWAY, LEDOW, D	1	-	16	-
XINYANG	3	-	8	-
YAMAHA	523	39	4,015	395
YIBEN, MEIDUO, VONROAD, WUB	-	-	19	-
YINGANG	1	-	49	-
YINGANG, MOTORAN, DAYTONA	-	-	23	-
YINXIANG, KENBO, CHEETA, FEH	7	-	42	1
ZHONGNENG, ZNEN, daDo, DIRI	36	1	175	5
ZHONGNENG, ZNEN, DIRECT BI	-	-	17	-
ZONGSHEN, ZIPSTAR, ZEALSUI	3	-	31	-
ZXMC, ZHONGXING, BEWHEEL	4	-	32	1
ETC	20	2	221	42
TOTAL	3,124	169	27,107	1,727

Graph 9. Sales of new motorcycles: September 2015



Graph 10. Sales of new motorcycles: January - September 2015



EXPLANATORY NOTES

Survey on the issuing of new road motor vehicle circulation licenses

The survey on the issuing of new motor vehicle circulation licenses is a census survey. The released data give information, at country level, on the brand and type of the motor vehicle, as well as whether it is new or used. The primary data derive from the Ministry of Infrastructure, Transport and Networks and are based on the issuing of new circulation licences. The survey does not include vehicles that move on rails, trolley busses, agricultural tractors and machinery. In addition, the following are excluded: all motor vehicles of the Armed Forces, Police, Fire Brigade, State Services, Diplomatic Corps, Foreign Missions, and Invalids of Wars, as well as motorcycles with a cylinder capacity less than 50 cc.

Legal basis Law 3832/2010

Reference Period September 2015

Coverage The production of monthly data is based on the registers held by the Ministry of Infrastructure, Transport and Networks, which records all the monthly changes observed in the vehicle registration licences at country level.

Definitions **Road motor vehicle** is any vehicle that, irrespective of the number of wheels, is moved by an engine and is designed to transport persons or cargo or both of them, either they are on the same single vehicle or on a trailer carried by the main motor vehicle. **New** road motor vehicle is any motor vehicle that is registered for the first time in Greece during the reference month and has not been put into circulation in any other country. **Used motor** vehicle is any motor vehicle that is registered for the first time in Greece and has been imported as a used one from abroad

Passenger motor vehicle: it is a motor vehicle designed to carry mostly people, having no more than 9 seats, including the driver's seat.

Bus: it is a motor vehicle, which is designed to carry mostly people, having more than 10 seats, including the driver's seat. (In the corresponding tables of this Press Release, this category also includes articulated buses.)

Lorry: it is motor vehicle designed to carry mostly cargo. (In the corresponding tables of this Press Release, this category also includes tractors, tow trucks, articulated tractors, and trucks with trailers).

Motorcycle: any two-wheeled motor vehicle, with or without sidecar, with maximum authorized design speed over 45 km/h, or in case it is powered by a combustion engine, with a cylinder capacity of 50 cc or over (In the corresponding tables of this Press Release, this category also includes the three-wheeled motor vehicles – motor tricycles).

Tricycle motor vehicle: it is a motor vehicle with three symmetrical wheels with maximum authorized design speed over 45 km/h, or in case it is powered by a combustion engine, with a cylinder capacity over the 50 cc. This category also includes four-wheel vehicles, except the light four-wheel motorcycles, whose empty vehicle tare (excluding the weight of the fuel or mixture of fuel-oil or the weight of the batteries for electric cars) is up to 400 kg in the case the vehicle is designed for passenger use or up to 550 kg in case the vehicle is designed to carry cargo and whose engine is up to 15KW.

Methodology Census Survey

References

More information (graphs, tables) concerning the survey on the issuing of new motor vehicle circulation licences are available on the webpage of ELSTAT, www.statistics.gr, under the link "Statistical Themes > Transport > Vehicles > Vehicle > Vehicle Licensing – Vehicle Fleet