

Piraeus, 9 - 7 - 2014

## PRESS RELEASE

### Issuing of Motor Vehicle Circulation Licences: June 2014

The Hellenic Statistical Authority announces that in June 2014, 10.475 road motor cars (both new and used from abroad) were put into circulation for the first time, recording a 46,3% increase compared with the corresponding month of 2013 when the number of road motor cars was 7.160. In June 2013, a 3,3% increase had been observed in comparison with the corresponding month of 2012 (Table1, Chart1).

The new motorcycles (over 50cc) that were put into circulation for the first time in June 2014 amounted to 4.585, against 3.612 in 2013, thus recording a 26,9% increase. In June 2013, a 7,3% decrease had been observed in comparison with the corresponding month of 2012 (Table 1, Chart1).

During the period January - June 2014, 52.282 road motor cars (both new and used from abroad) were put into circulation for the first time, representing a 28,5% increase compared to the corresponding period of 2013 when the number of road motor cars was 40.682. During the period January - June 2013 a decrease of 5,4% had been observed in comparison with the corresponding period of 2012 (Table2, Charts 2,3).

During the period January - June 2014 the circulation of new motorcycles (over 50cc) amounted to 16.974, against 16.000 in 2013, thus representing a 6,1% increase. A decrease of 6,8% had been observed during the period January - June 2013 in comparison with the corresponding period of 2012 (Table 2, Charts 2,3).

Information:

Division of Statistics on Trade and Services  
Section of Transport, Communications and Mass Media

Konstantinos Menexes

Telephor : (0030) 213 1352500

FAX : (0030) 213 1352496

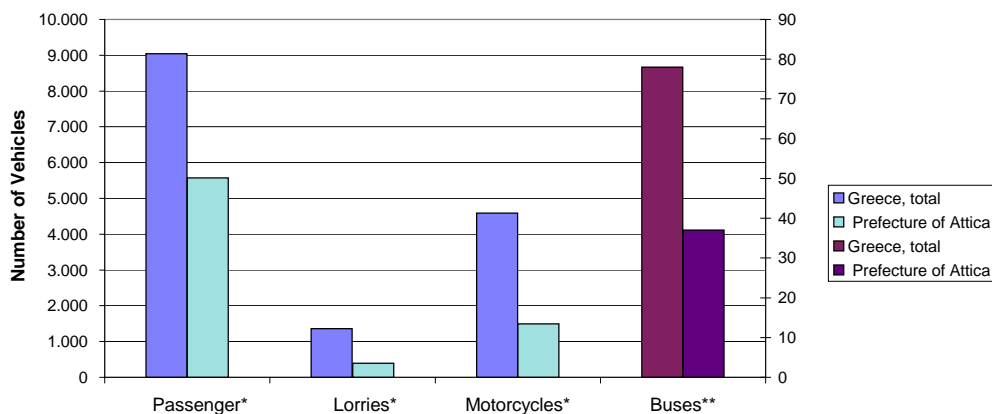
e-mail : k.menexes@statistics.gr

**Table 1. Road motor vehicles, both new and used, put into circulation for the first time in Greece:  
June 2012 - 2014**

Category of Road Motor Vehicles	June						Change (%)			
	2014		2013		2012		2014/2013		2013/2012	
	Total	Used	Total	Used	Total	Used	Total	Used	Total	Used
<b>Greece, total</b>										
<b>Road Motor Vehicles, total</b>	<b>15.060</b>	<b>2.316</b>	<b>10.772</b>	<b>1.344</b>	<b>10.826</b>	<b>1.154</b>	<b>39,8</b>	<b>72,3</b>	<b>-0,5</b>	<b>16,5</b>
<b>1. Road motor cars</b>	<b>10.475</b>	<b>2.100</b>	<b>7.160</b>	<b>1.216</b>	<b>6.929</b>	<b>1.061</b>	<b>46,3</b>	<b>72,7</b>	<b>3,3</b>	<b>14,6</b>
Passenger Cars	9.039	1.115	6.118	470	5.925	397	47,7	137,2	3,3	18,4
Buses	78	47	32	16	45	35	143,8	193,8	-28,9	-54,3
Lorries	1.358	938	1.010	730	959	629	34,5	28,5	5,3	16,1
<b>2. Motorcycles &gt; 50 cc</b>	<b>4.585</b>	<b>216</b>	<b>3.612</b>	<b>128</b>	<b>3.897</b>	<b>93</b>	<b>26,9</b>	<b>68,8</b>	<b>-7,3</b>	<b>37,6</b>
<b>Prefecture of Attica</b>										
<b>Road Motor Vehicles, total</b>	<b>7.501</b>	<b>567</b>	<b>5.329</b>	<b>323</b>	<b>5.398</b>	<b>221</b>	<b>40,8</b>	<b>75,5</b>	<b>-1,3</b>	<b>46,2</b>
<b>1. Road motor cars</b>	<b>6.004</b>	<b>537</b>	<b>3.942</b>	<b>304</b>	<b>3.841</b>	<b>214</b>	<b>52,3</b>	<b>76,6</b>	<b>2,6</b>	<b>42,1</b>
Passenger Cars	5.575	336	3.633	162	3.602	113	53,5	107,4	0,9	43,4
Buses	37	20	13	4	10	7	184,6	400,0	30,0	-42,9
Lorries	392	181	296	138	229	94	32,4	31,2	29,3	46,8
<b>2. Motorcycles &gt; 50 cc</b>	<b>1.497</b>	<b>30</b>	<b>1.387</b>	<b>19</b>	<b>1.557</b>	<b>7</b>	<b>7,9</b>	<b>57,9</b>	<b>-10,9</b>	<b>171,4</b>

Category of Road Motor Vehicles	Average Jul. 2013 - Jun. 2014		Average Jul. 2012 - Jun. 2013		Change (%) Average Jul. 2013 - Jun. 2014 / Average Jul. 2012 - Jun. 2013	
	Total	Used	Total	Used	Total	Used
	<b>Greece, total</b>					
<b>Road Motor Vehicles, total</b>	<b>10.169</b>	<b>1.805</b>	<b>8.990</b>	<b>1.359</b>	<b>13,1</b>	<b>32,8</b>
<b>1. Road motor cars</b>	<b>7.524</b>	<b>1.693</b>	<b>6.280</b>	<b>1.264</b>	<b>19,8</b>	<b>33,9</b>
Passenger Cars	6.233	772	5.153	457	<b>21,0</b>	<b>68,9</b>
Buses	53	39	29	23	<b>82,8</b>	<b>69,6</b>
Lorries	1.238	882	1.098	784	<b>12,8</b>	<b>12,5</b>
<b>2. Motorcycles &gt; 50 cc</b>	<b>2.645</b>	<b>112</b>	<b>2.710</b>	<b>95</b>	<b>-2,4</b>	<b>17,9</b>

**Graph 1. New registrations of motor vehicles: June 2014**



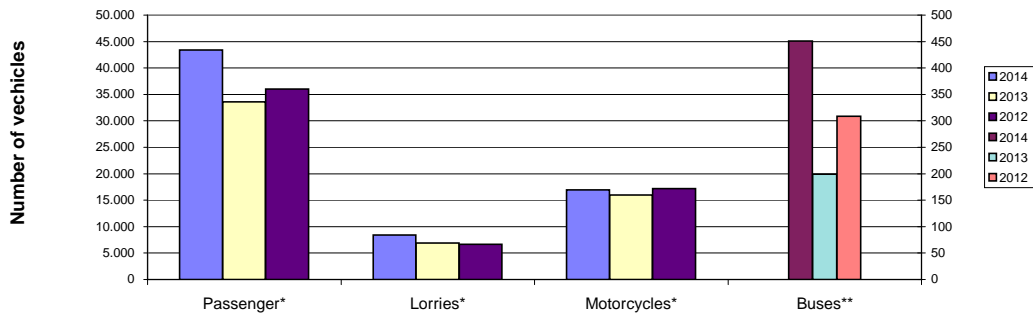
\* For Passenger motor vehicles, Lorries and Motorcycles see the left axis scale

\*\* For Buses see the right axis scale

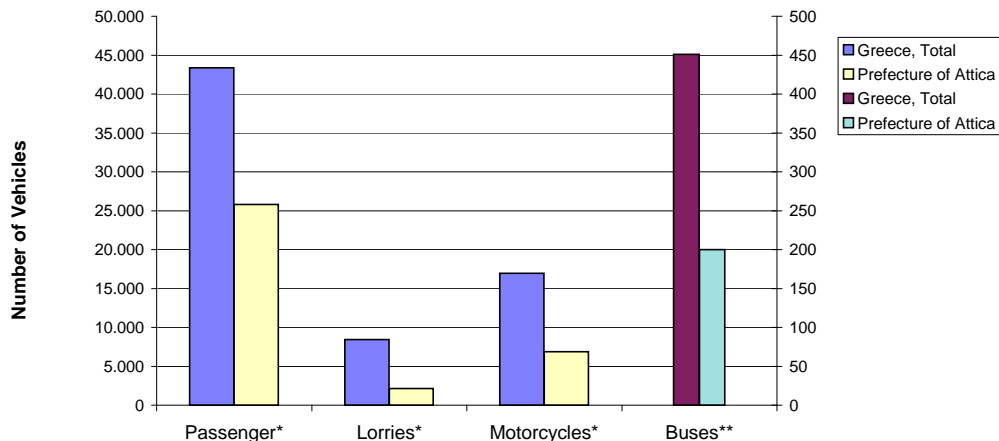
**Table 2. Road motor vehicles, both new and used, put into circulation for the first time in Greece:  
Jan. - Jun. 2012 - 2014**

Category of Road Motor Vehicles	January- June						Change (%)			
	2014		2013		2012		2014/2013		2013/2012	
	Total	Used	Total	Used	Total	Used	Total	Used	Total	Used
<b>Greece, total</b>										
<b>Road Motor Vehicles, total</b>	<b>69.256</b>	<b>13.358</b>	<b>56.682</b>	<b>9.129</b>	<b>60.165</b>	<b>9.190</b>	<b>22,2</b>	<b>46,3</b>	<b>-5,8</b>	<b>-0,7</b>
<b>1. Road motor cars</b>	<b>52.282</b>	<b>12.576</b>	<b>40.682</b>	<b>8.447</b>	<b>42.999</b>	<b>8.656</b>	<b>28,5</b>	<b>48,9</b>	<b>-5,4</b>	<b>-2,4</b>
Passenger Cars	43.387	6.183	33.571	3.193	36.042	3.716	29,2	93,6	-6,9	-14,1
Buses	451	333	199	160	309	227	126,6	108,1	-35,6	-29,5
Lorries	8.444	6.060	6.912	5.094	6.648	4.713	22,2	19,0	4,0	8,1
<b>2. Motorcycles &gt; 50 cc</b>	<b>16.974</b>	<b>782</b>	<b>16.000</b>	<b>682</b>	<b>17.166</b>	<b>534</b>	<b>6,1</b>	<b>14,7</b>	<b>-6,8</b>	<b>27,7</b>
<b>Prefecture of Attica</b>										
<b>Road Motor Vehicles, total</b>	<b>35.029</b>	<b>3.175</b>	<b>28.588</b>	<b>1.834</b>	<b>29.434</b>	<b>1.747</b>	<b>22,5</b>	<b>73,1</b>	<b>-2,9</b>	<b>5,0</b>
<b>1. Road motor cars</b>	<b>28.155</b>	<b>3.060</b>	<b>21.801</b>	<b>1.717</b>	<b>21.868</b>	<b>1.647</b>	<b>29,1</b>	<b>78,2</b>	<b>-0,3</b>	<b>4,3</b>
Passenger Cars	25.800	1.918	20.241	972	20.569	990	27,5	97,3	-1,6	-1,8
Buses	200	129	61	42	96	64	227,9	207,1	-36,5	-34,4
Lorries	2.155	1.013	1.499	703	1.203	593	43,8	44,1	24,6	18,5
<b>2. Motorcycles &gt; 50 cc</b>	<b>6.874</b>	<b>115</b>	<b>6.787</b>	<b>117</b>	<b>7.566</b>	<b>100</b>	<b>1,3</b>	<b>-1,7</b>	<b>-10,3</b>	<b>17,0</b>

**Graph 2. New motor vehicle circulation licences: comparative data  
January- June 2012, 2013, 2014**



**Graph 3. New registrations of motor vehicles: January- June 2014**

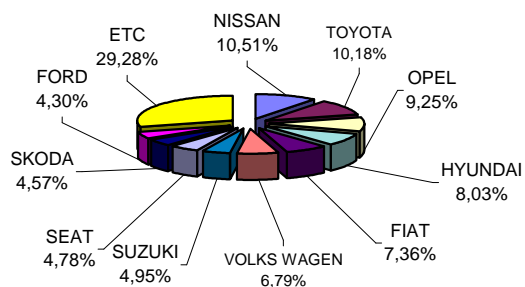


\* For Passenger motor vehicles, Lorries and Motorcycles see the left axis scale  
\*\* For the Buses see the right axis scale

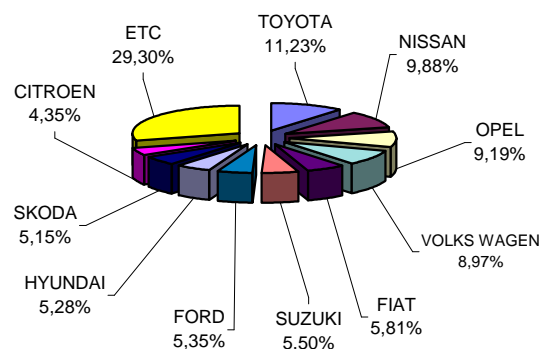
**Table 3. Sales of new and used passenger cars by make:  
June and January- June 2014**

Makes	Passenger cars			
	June		Jan. - Jun.	
	new	used	new	used
ALFA ROMEO	84	5	349	28
ASTON MARTIN	-	-	-	1
AUDI	226	30	1.347	166
AUSTIN	-	-	-	1
BENTLEY	-	-	1	-
BMW	183	35	1.158	159
CARAVANS INTERNATIONAL	-	-	1	-
CHANGAN CO	-	-	1	-
CHAUSSON	-	-	-	1
CHEVROLET	127	-	484	34
CHRYSLER	-	-	-	5
CITROEN	242	49	1.619	253
DACIA	73	1	292	7
DAIHATSU	-	5	2	19
DETHLEFFS H POS	-	2	-	7
FIAT	583	87	2.161	450
FIAT DUCATO NIKAS	-	-	1	-
FIAT/CHALLENGER	-	-	-	1
FIAT-IVECO	-	-	-	1
FORD	341	82	1.989	486
HONDA	73	5	343	39
HYUNDAI	636	9	1.963	54
JAGUAR	-	-	1	2
JEEP	3	1	16	8
KIA	143	10	550	45
LAMBORGHINI	-	-	-	2
LANCIA	62	2	344	28
LAND ROVER	3	4	14	40
LEXUS	6	-	21	8
MAZDA	1	6	25	39
MERCEDES	265	66	1.173	400
MERCEDES Z.MANTOS	1	-	21	-
MINI	76	8	393	49
MITSUBISHI	27	5	154	22
MOBITECNO	-	-	2	-
NISSAN	833	14	3.675	73
OPEL	733	245	3.418	1.225
PEUGEOT	273	46	843	239
PORSCHE	2	3	7	23
RENAULT	292	32	1.202	205
SAAB	-	2	-	11
SEA / ELNAGH	-	-	1	1
SEA / MOBILVETT	-	-	-	4
SEAT	379	4	1.204	34
SKODA	362	5	1.916	51
SMART	10	114	87	755
SUBARU	4	1	46	4
SUZUKI	392	37	2.048	184
TALBOT	-	-	-	1
TESLA	-	-	-	1
TOYOTA	807	119	4.178	641
VOLKS WAGEN	538	68	3.338	348
VOLVO	144	4	816	28
<b>TOTAL</b>	<b>7.924</b>	<b>1.115</b>	<b>37.204</b>	<b>6.183</b>

**Graph 4. Sales of new passenger cars:  
June 2014**



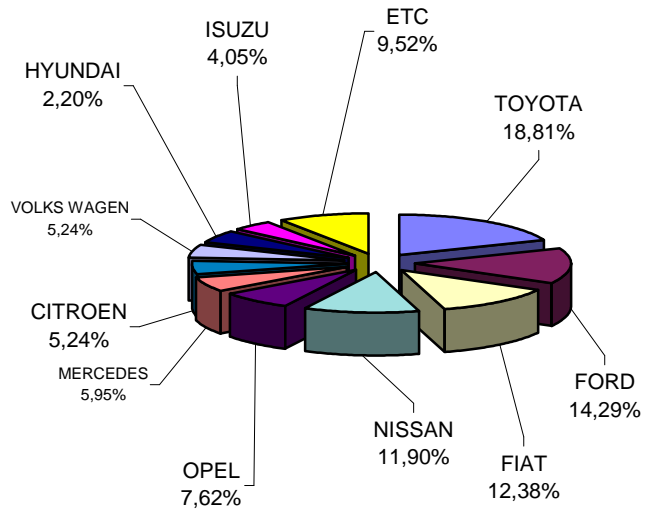
**Graph 5. Sales of new passenger cars:  
January- June 2014**



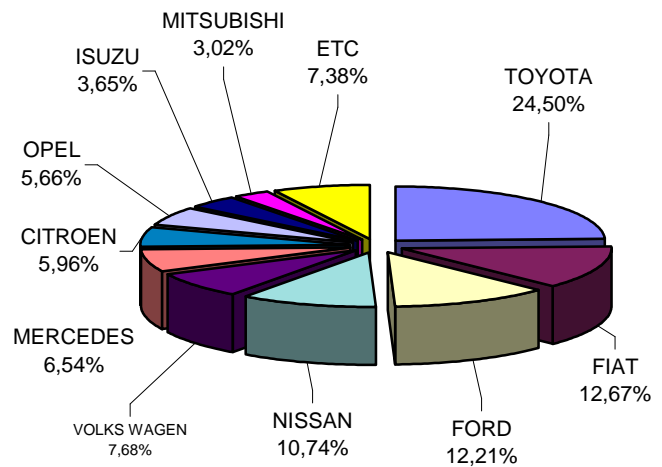
**Table 4. Sales of new and used lorries by make:  
June and January- June 2014**

Makes	Lorries			
	June		Jan. - Jun.	
	new	used	new	used
ALBION	-	1	-	1
B.M.W.	-	1	-	1
CHEVROLET	-	-	-	2
CHRYSLER	-	-	-	3
CITROEN	22	20	142	99
DACIA	-	1	-	8
DAF	5	8	23	84
DAIHATSU	-	1	-	7
DODGE	-	1	-	4
FIAT	52	104	302	650
FIAT-IVECO	-	8	1	34
FORD	60	102	291	593
G.M.C.	-	-	-	1
HYUNDAI	-	2	-	16
ISUZU	17	15	87	64
IVECO	5	10	18	41
IVECO MAGIRUS	-	3	3	9
KIA	-	1	-	6
LAND ROVER	-	1	-	3
MAHINDRA	2	-	11	-
MAN	3	36	21	242
MAZDA	2	26	5	160
MERCEDES	25	174	156	1.161
MITSUBISHI	15	47	72	346
NISSAN	50	63	256	496
OAF	-	-	-	1
OPEL	32	69	135	518
PEUGEOT	21	22	52	93
PFAU	-	1	-	2
PIAGGIO	1	4	11	12
RENAULT	1	49	2	332
ROVER	-	-	-	2
SCANIA	-	23	3	115
SEAT	6	2	14	5
SKODA	-	16	-	105
SOVAB	-	-	-	1
SUBARU	-	-	-	1
STEYER	-	-	-	2
SUZUKI	-	-	-	6
TATA	-	-	1	-
TOYOTA	79	39	584	269
TOYOTA SGOURIS	-	-	2	-
VOLKS WAGEN	22	54	183	371
VOLVO	-	34	9	194
<b>TOTAL</b>	<b>420</b>	<b>938</b>	<b>2.384</b>	<b>6.060</b>

**Graph 6. Sales of new lorries:  
June 2014**



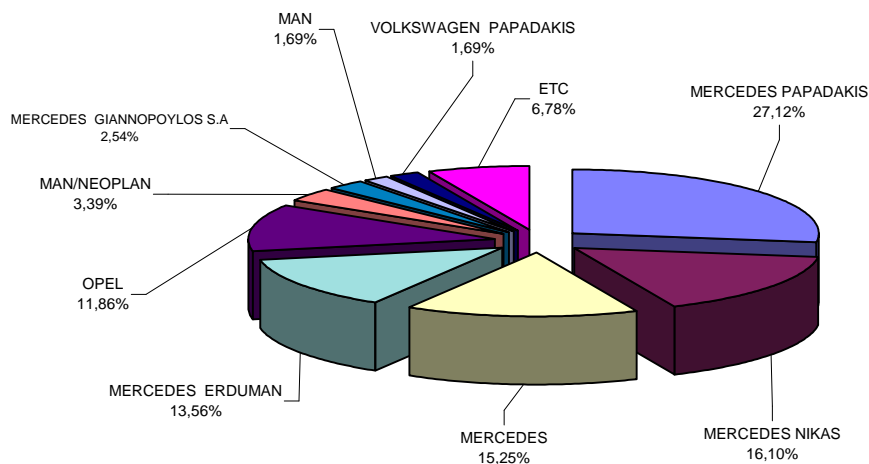
**Graph 7. Sales of new lorries:  
January- June 2014**



**Table 5. Sales of new and used buses by make:  
June and January- June 2014**

Makes	Buses			
	June		Jan. - Jun.	
	new	used	new	used
AYATS	-	-	-	1
BOVA	-	6	-	36
D.K.W.	-	-	-	1
DAF	-	-	-	2
EVOBUS	-	4	-	36
FIAT-IVECO	-	-	-	3
FORD	-	1	-	10
G.AUWARTER	-	-	-	6
IRISBUS	-	-	1	1
ISUZU	-	-	1	2
IVECO	-	1	1	6
IVECO η IRISBUS	-	-	1	-
KASSBOHRER	-	1	-	6
MAN	-	6	2	26
MAN URBIS DD	1	-	1	-
MAN/NEOPLAN	2	-	4	-
MERCEDES	5	16	18	108
MERCEDES CENTO SERVICE S	1	-	1	-
MERCEDES ERDUMAN	3	-	16	-
MERCEDES GIANNOPOYLOS S.	3	-	3	-
MERCEDES NIKAS	7	-	19	1
MERCEDES PAPADAKIS	4	-	32	1
NEOPLAN	-	1	-	22
OPEL	5	-	14	-
OTOKAR OTOBUS	-	-	-	1
SAAB	-	-	-	1
SCANIA	-	5	1	14
SETRA	-	4	-	31
SIN MARCA	-	-	-	1
TEMSA	-	1	1	7
VAN HOOL	-	-	-	2
VOLKS WAGEN	-	-	-	1
VOLKSWAGEN PAPADAKIS	-	-	2	-
VOLVO	-	1	-	7
<b>TOTAL</b>	<b>31</b>	<b>47</b>	<b>118</b>	<b>333</b>

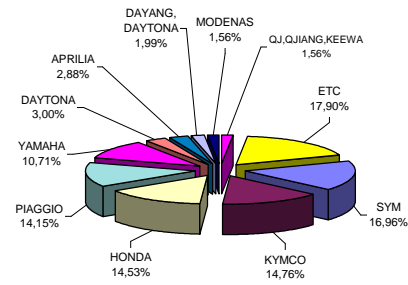
**Graph 8. Sales of new buses:  
January- June 2014**



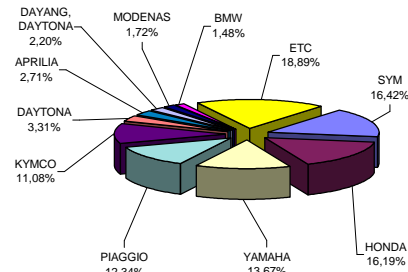
**Table 6. Sales of new and used motorcycles by make or manufacturer: June and January- June 2014**

Makes	Motorcycles			
	June		Jan. - Jun.	
	new	used	new	used
ACCESS	3	1	17	1
ACCESS, GOES	6	-	6	-
AEON MOTOR	13	-	35	-
APRILIA	126	12	439	48
APRILIA, PIAGGIO, GILERA	2	-	2	-
APRILIA, GILERA	2	-	7	-
ARTIC CAT	-	-	9	-
BAOTIAN, SUPERKI	-	-	5	1
BASHAN	3	1	7	1
BETA	1	-	7	-
BMW	49	2	239	12
BOMBARDIER INC.	2	-	8	5
BUYANG	1	-	10	-
CARTER	3	-	6	-
CFMOTO	-	-	5	-
CHEETA	1	-	4	-
CHONGQING LIFAN	4	-	5	-
DAELIM	14	1	45	3
DAYANG, DAYTONA	87	-	357	4
DAYTONA	131	1	536	4
DERBI	8	-	44	1
DINLI, EXPLORER, HYTRACK, M	2	-	2	-
DUCATI	16	-	59	4
FEISHEN, MONDIA	1	-	8	-
GARELLI, FASPIDER, Tianma	2	-	2	-
GENERIC, RIDE, EXPLORER, G-RI	1	-	4	-
GILERA	4	1	18	1
GILERA, PIAGGIO	5	1	37	4
HAOJIANG, SENKE, ZONTES, TAY	16	-	21	-
HARLEY DAVIDSON	13	2	58	9
HER CHEE, ADLY	-	-	14	-
HM	1	-	12	7
HONDA	635	40	2.622	133
HUSABERG	-	-	8	1
HUSQVARNA	4	1	26	1
HYOSUNG	2	-	6	-
JIAJUE, JINDING, LANYING, PEDA	8	-	9	-
JIANSHE	9	-	38	-
JINLING	1	-	5	1
JLAJI, HUATIAN, FEILING, TUTU, E	38	1	122	1
JOYNER	4	-	11	-
KAISAR	4	-	13	1
KAWASAKI	18	10	90	21
KEEWAY, QJIANG, QJ	1	-	5	-
KENBO	11	-	53	-
KENOS	2	-	18	-
KL	22	-	95	-
KTM	20	-	134	5
KWANG YANG	-	4	-	24
KYMCO	645	16	1.794	46
LIFAN	20	-	61	-
LIFAN, HONLEI, SKYGO, BISAN-LI	35	-	140	-
LINGBEN, BINQI,	-	-	15	-
LINGBEN, HAIZHIM	-	-	5	-
LINHAI	2	-	13	-
LINTEX, IVA, WK BIKES, SINOCO	2	-	10	-
LML	10	-	50	-
LONCIN, KINLON,	2	-	15	-
LONCIN, KINLON, DORTON, CCN	14	-	14	-
LONCIN, LONGTIN	-	-	14	-
LONCIN, X-GEAR,	-	-	9	-
MALAGUTI SPA	-	-	-	5
MBK INDUSTRIE	-	1	-	4
MG MOTO	38	-	187	1
MODENAS	68	3	278	4
MOTO GUZZI	2	-	11	1
MV AGUSTA	2	-	13	-
NFM	2	-	8	-
NIPPONIA	3	-	9	-
ODES, LIANGZI	3	-	28	-
PEUGEOT	62	2	188	4
PIAGGIO	618	36	1.998	136
PIAGGIO, APRILIA	14	-	51	1
POLARIS	3	-	12	-
QJ, QJIANG, KEEWA	68	-	106	1
QJ, QJIANG, KEEWAY, LEONE, tell	10	-	15	1
QJIANG	7	-	13	-
QUADRO	1	-	6	-
SAN YANG	-	-	1	4
SANYE FUXIN	2	-	4	-
SHANYANG	5	-	17	-
SHINERAY	10	-	48	1
SKYJET	18	-	60	-
SKYTEAM, SASIN, CSR, METALKO	4	-	26	-
SOKON	2	-	6	-
SUZUKI	23	15	109	69
SYM	741	7	2.658	18
TGB	21	-	52	1
TRIUMPH	18	-	78	-
TURBHO	-	-	4	-
WANGYE, SANBEN, UM, MONDIAL	4	-	17	-
XGJAO	26	1	168	1
XGJAO, YUAN, SKYJET, KAISAR	8	-	47	1
XINGYUE	-	-	4	-
XINGYUE, QSTRON	2	-	5	-
XINLING, HEROWAY, LEDOW	3	-	12	-
YAMAHA	468	47	2.213	163
YIBEN	2	-	2	-
YIBEN, MEIDUO, VONROAD, WUB	2	-	8	-
YINXIANG	11	-	32	1
YINXIANG, KENBO	6	-	24	-
YINXIANG, CHEETA	-	-	4	-
YUAN	1	-	6	-
ZHENSHENG	5	-	5	-
ZHONGNENG, ZNEN, daDo, DIRB	20	-	56	-
ZONGSHEN	4	-	8	-
ZONGSHEN, ZIPSTAR, ZEALSUN	12	1	44	1
ETC	24	9	129	25
<b>TOTAL</b>	<b>4.369</b>	<b>216</b>	<b>16.192</b>	<b>782</b>

**Graph 9. Sales of new motorcycles: June 2014**



**Graph 10. Sales of new motorcycles: January- June 2014**



## EXPLANATORY NOTES

### Survey on the issuing of new road motor vehicle circulation licenses

The survey on the issuing of new motor vehicle circulation licenses is a census survey. The released data give information, at country level, on the brand and type of the motor vehicle, as well as whether it is new or used. The primary data derive from the Ministry of Infrastructure, Transport and Networks and are based on the issuing of new circulation licences. The survey does not include vehicles that move on rails, trolley busses, agricultural tractors and machinery. In addition, the following are excluded: all motor vehicles of the Armed Forces, Police, Fire Brigade, State Services, Diplomatic Corps, Foreign Missions, and Invalids of Wars, as well as motorcycles with a cylinder capacity less than 50 cc.

**Legal basis** Legislative Decree 3627/56, Law 2392/96, Law 3832/2010

**Reference Period** June 2014

**Coverage** The production of monthly data is based on the registers held by the Ministry of Infrastructure, Transport and Networks, which records all the monthly changes observed in the vehicle registration licences at country level.

**Definitions** **Road motor vehicle** is any vehicle that, irrespective of the number of wheels, is moved by an engine and is designed to transport persons or cargo or both of them, either they are on the same single vehicle or on a trailer carried by the main motor vehicle. **New** road motor vehicle is any motor vehicle that is registered for the first time in Greece during the reference month and has not been put into circulation in any other country. **Used motor** vehicle is any motor vehicle that is registered for the first time in Greece and has been imported as a used one from abroad

**Passenger motor vehicle:** it is a motor vehicle designed to carry mostly people, having no more than 9 seats, including the driver's seat.

**Bus:** it is a motor vehicle, which is designed to carry mostly people, having more than 10 seats, including the driver's seat. (In the corresponding tables of this Press Release, this category also includes articulated buses.)

**Lorry:** it is motor vehicle designed to carry mostly cargo. (In the corresponding tables of this Press Release, this category also includes tractors, tow trucks, articulated tractors, and trucks with trailers).

**Motorcycle:** any two-wheeled motor vehicle, with or without sidecar, with maximum authorized design speed over 45 km/h, or in case it is powered by a combustion engine, with a cylinder capacity of 50 cc or over (In the corresponding tables of this Press Release, this category also includes the three-wheeled motor vehicles – motor tricycles).

**Tricycle motor vehicle:** it is a motor vehicle with three symmetrical wheels with maximum authorized design speed over 45 km/h, or in case it is powered by a combustion engine, with a cylinder capacity over the 50 cc. This category also includes four-wheel vehicles, except the light four-wheel motorcycles, whose empty vehicle tare (excluding the weight of the fuel or mixture of fuel-oil or the weight of the batteries for electric cars) is up to 400 kg in the case the vehicle is designed for passenger use or up to 550 kg in case the vehicle is designed to carry cargo and whose engine is up to 15KW.

**Methodology** Census Survey

### References

More information (graphs, tables) concerning the survey on the issuing of new motor vehicle circulation licences are available on the webpage of ELSTAT, [www.statistics.gr](http://www.statistics.gr), under the link "Statistical Themes > Transport > Vehicles > Vehicle > Vehicle Licensing – Vehicle Fleet