

## **PRESS RELEASE**

### **Issuing of Motor Vehicle Circulation Licences: August 2013**

The Hellenic Statistical Authority announces that in August 2013, 4.854 road motor cars (both new and used from abroad) were put into circulation for the first time, recording a 6,5% decrease compared with the corresponding month of 2012 when the number of road motor cars was 5.189. In August 2012, a decrease of 44,1% had been observed in comparison with the corresponding month of 2011.

The new motorcycles (over 50cc) that were put into circulation for the first time in August 2013 amounted to 2.676, against 3.338 in 2012, thus recording a 19,8% decrease. In August 2012, a decrease of 28,6% had been observed in comparison with the corresponding month of 2011.

During the period January - August 2013, 54.010 road motor cars (both new and used from abroad) were put into circulation for the first time, representing a 3,0% decrease compared to the corresponding period of 2012 when the number of road motor cars was 55.678. During the period January - August 2012 a decrease of 40,4% had been observed in comparison with the corresponding period of 2011.

During the period January - August 2013 the circulation of new motorcycles (over 50cc) amounted to 23.165, against 25.418 in 2012, thus representing a 8,9% decrease. A decrease of 31,3% had been observed during the period January - August 2012 in comparison with the corresponding period of 2011.

Information:

Division of Statistics on Trade and Services  
Section of Transport, Communications and Mass Media

Konstantinos Menexes

Telephone : (0030) 213 1352500

FAX : (0030) 213 1352496

e-mail : menexesk@statistics.gr

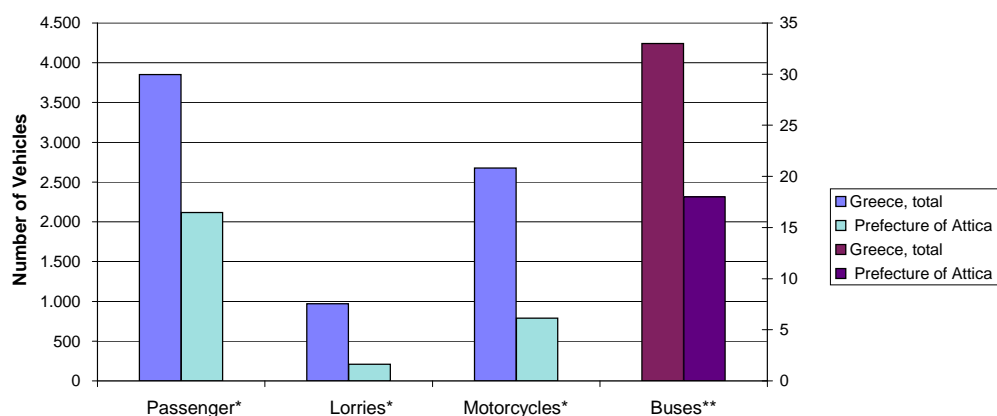
**Table 1. Road motor vehicles, both new and used, put into circulation for the first time in Greece:  
August 2011 - 2013**

Category of Road Motor Vehicles	August						Change (%)			
	2013		2012		2011		2013/2012		2012/2011	
	Total	Used	Total	Used	Total	Used	Total	Used	Total	Used
<b>Greece, total</b>										
<b>Road Motor Vehicles, total</b>	<b>7.530</b>	<b>1.309</b>	<b>8.527</b>	<b>1.172</b>	<b>13.963</b>	<b>1.643</b>	<b>-11,7</b>	<b>11,7</b>	<b>-38,9</b>	<b>-28,7</b>
<b>1. Road motor cars</b>	<b>4.854</b>	<b>1.209</b>	<b>5.189</b>	<b>1.078</b>	<b>9.286</b>	<b>1.517</b>	<b>-6,5</b>	<b>12,2</b>	<b>-44,1</b>	<b>-28,9</b>
Passenger Cars	3.851	482	4.268	396	7.931	643	-9,8	21,7	-46,2	-38,4
Buses	33	29	21	15	14	13	57,1	93,3	50,0	15,4
Lorries	970	698	900	667	1.341	861	7,8	4,6	-32,9	-22,5
<b>2. Motorcycles &gt; 50 cc</b>	<b>2.676</b>	<b>100</b>	<b>3.338</b>	<b>94</b>	<b>4.677</b>	<b>126</b>	<b>-19,8</b>	<b>6,4</b>	<b>-28,6</b>	<b>-25,4</b>
<b>Prefecture of Attica</b>										
<b>Road Motor Vehicles, total</b>	<b>3.137</b>	<b>269</b>	<b>3.590</b>	<b>190</b>	<b>5.539</b>	<b>266</b>	<b>-12,6</b>	<b>41,6</b>	<b>-35,2</b>	<b>-28,6</b>
<b>1. Road motor cars</b>	<b>2.347</b>	<b>256</b>	<b>2.509</b>	<b>180</b>	<b>4.025</b>	<b>252</b>	<b>-6,5</b>	<b>42,2</b>	<b>-37,7</b>	<b>-28,6</b>
Passenger Cars	2.118	136	2.360	96	3.819	146	-10,3	41,7	-38,2	-34,2
Buses	18	18	3	3	4	3	500,0	500,0	-25,0	0,0
Lorries	211	102	146	81	202	103	44,5	25,9	-27,7	-21,4
<b>2. Motorcycles &gt; 50 cc</b>	<b>790</b>	<b>13</b>	<b>1.081</b>	<b>10</b>	<b>1.514</b>	<b>14</b>	<b>-26,9</b>	<b>30,0</b>	<b>-28,6</b>	<b>-28,6</b>

Category of Road Motor Vehicles	Average Sep. 2012 - Aug. 2013 <sup>(1)</sup>		Average Sep. 2011 - Aug. 2012		Change (%)	
					Average Sep. 2012 - Aug. 2013 <sup>(1)</sup> / Average Sep. 2011 - Aug. 2012	
	Total	Used	Total	Used	Total	Used
<b>Greece, total</b>						
<b>Road Motor Vehicles, total</b>	<b>8.955</b>	<b>1.391</b>	<b>10.354</b>	<b>1.465</b>	<b>-13,5</b>	<b>-5,1</b>
<b>1. Road motor cars</b>	<b>6.335</b>	<b>1.294</b>	<b>7.341</b>	<b>1.381</b>	<b>-13,7</b>	<b>-6,3</b>
Passenger Cars	5.189	479	6.178	587	-16,0	-18,4
Buses	29	22	41	31	-29,3	-29,0
Lorries	1.117	793	1.122	763	-0,4	3,9
<b>2. Motorcycles &gt; 50 cc</b>	<b>2.620</b>	<b>97</b>	<b>3.013</b>	<b>84</b>	<b>-13,0</b>	<b>15,5</b>

(1) The cumulative data for February - June 2013 have been revised.

**Graph 1. New registrations of motor vehicles: August 2013**



\* For Passenger motor vehicles, Lorries and Motorcycles see the left axis scale

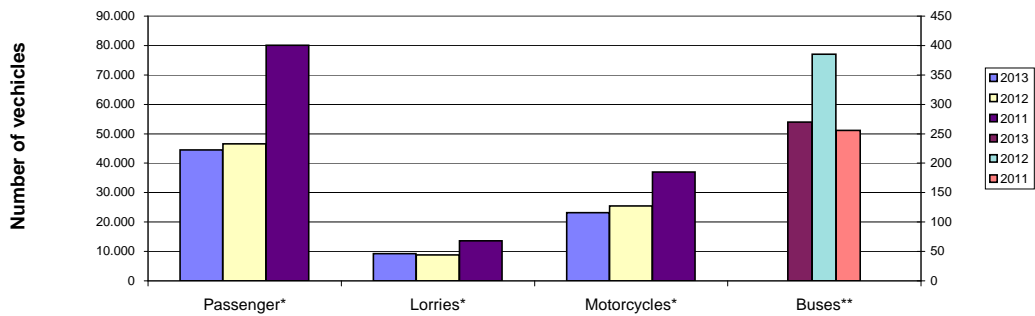
\*\* For Buses see the right axis scale

**Table 2. Road motor vehicles, both new and used, put into circulation for the first time in Greece:  
Jan. - Aug. <sup>(1)</sup> 2011 - 2013**

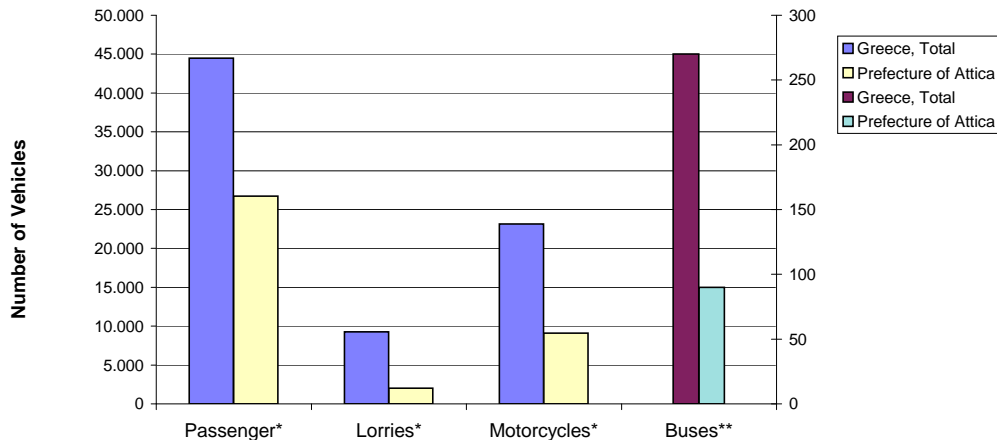
Category of Road Motor Vehicles	January - August						Change (%)			
	2013 <sup>(1)</sup>		2012		2011		2013/2012		2012/2011	
	Total	Used	Total	Used	Total	Used	Total	Used	Total	Used
<b>Greece, total</b>										
<b>Road Motor Vehicles, total</b>	<b>77.175</b>	<b>12.232</b>	<b>81.096</b>	<b>11.910</b>	<b>130.984</b>	<b>17.408</b>	<b>-4,8</b>	<b>2,7</b>	<b>-38,1</b>	<b>-31,6</b>
<b>1. Road motor cars</b>	<b>54.010</b>	<b>11.298</b>	<b>55.678</b>	<b>11.144</b>	<b>93.962</b>	<b>16.449</b>	<b>-3,0</b>	<b>1,4</b>	<b>-40,7</b>	<b>-32,3</b>
Passenger Cars	44.487	4.327	46.525	4.584	80.131	7.742	-4,4	-5,6	-41,9	-40,8
Buses	270	204	385	284	256	196	-29,9	-28,2	50,4	44,9
Lorries	9.253	6.767	8.768	6.276	13.575	8.511	5,5	7,8	-35,4	-26,3
<b>2. Motorcycles &gt; 50 cc</b>	<b>23.165</b>	<b>934</b>	<b>25.418</b>	<b>766</b>	<b>37.022</b>	<b>959</b>	<b>-8,9</b>	<b>21,9</b>	<b>-31,3</b>	<b>-20,1</b>
<b>Prefecture of Attica</b>										
<b>Road Motor Vehicles, total</b>	<b>37.934</b>	<b>2.479</b>	<b>38.684</b>	<b>2.212</b>	<b>60.702</b>	<b>3.527</b>	<b>-1,9</b>	<b>12,1</b>	<b>-36,3</b>	<b>-37,3</b>
<b>1. Road motor cars</b>	<b>28.832</b>	<b>2.323</b>	<b>28.338</b>	<b>2.086</b>	<b>45.278</b>	<b>3.285</b>	<b>1,7</b>	<b>11,4</b>	<b>-37,4</b>	<b>-36,5</b>
Passenger Cars	26.710	1.311	26.624	1.227	42.840	2.150	0,3	6,8	-37,9	-42,9
Buses	90	62	120	83	64	43	-25,0	-25,3	87,5	93,0
Lorries	2.032	950	1.594	776	2.374	1.092	27,5	22,4	-32,9	-28,9
<b>2. Motorcycles &gt; 50 cc</b>	<b>9.102</b>	<b>156</b>	<b>10.346</b>	<b>126</b>	<b>15.424</b>	<b>242</b>	<b>-12,0</b>	<b>23,8</b>	<b>-32,9</b>	<b>-47,9</b>

(1) The cumulative data for February - June 2013 have been revised.

**Graph 2. New motor vehicle circulation licences: comparative data  
January - August 2011, 2012, 2013**



**Graph 3. New registrations of motor vehicles: January - August 2013**

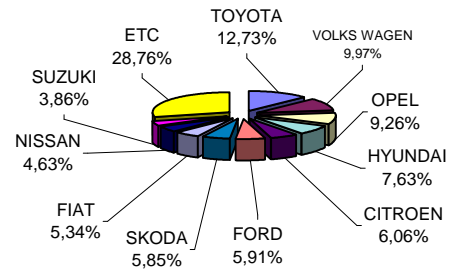


\* For Passenger motor vehicles, Lorries and Motorcycles see the left axis scale  
\*\* For the Buses see the right axis scale

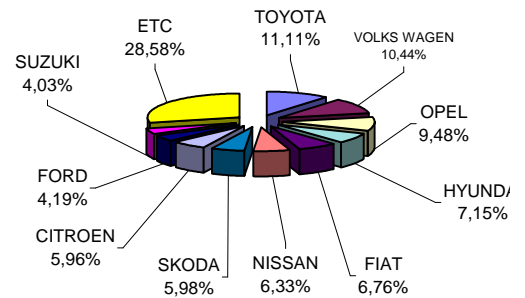
**Table 3. Sales of new and used passenger cars by make:  
August and January - August <sup>(1)</sup> 2013**

Makes	Passenger cars			
	August		Jan. - Aug. <sup>(1)</sup>	
	new	used	new	used
ALFA ROMEO	45	-	469	8
AUDI	122	10	1.180	123
B.M.W.	104	14	1.026	119
BENTLEY	-	-	1	-
C.I/ROLLERTEAM	-	-	1	-
CHEVROLET	1	-	15	9
CHRYSLER	-	-	-	9
CITROEN	204	30	2.392	168
DACIA	49	1	200	2
DAEWOO	-	-	-	5
DAIHATSU	-	2	105	10
DODGE	2	-	17	1
FIAT	180	32	2.713	315
FORD	199	35	1.683	245
GM KOREA (CHEVROLET)	35	-	500	-
HOBBY	-	-	1	-
HONDA	30	5	436	37
HONGXING	-	-	1	-
HYUNDAI	257	6	2.870	36
ISUZU	-	-	-	1
IVECO SPA	-	-	1	-
JAGUAR	-	-	-	5
JAGUAR LAND ROVER LIMITED	-	-	11	-
KEWET	-	-	-	1
KIA	51	5	702	39
LADA	-	-	-	1
LANCIA	49	1	618	15
LAND ROVER	-	1	8	6
MAZDA	-	2	48	22
MERCEDES	99	47	1.045	295
MINI	34	-	362	17
MITSUBISHI	20	1	259	29
NISSAN	156	5	2.544	56
OPEL	312	88	3.807	782
PEUGEOT	54	13	1.123	91
PORSCHE	1	-	7	10
RENAULT	85	9	697	103
SAAB	-	-	5	7
SEAT	79	4	1.505	21
SKODA	197	2	2.402	48
SMART	16	68	230	868
SSANGYONG	-	-	-	1
SUBARU	-	-	18	4
SUZUKI	130	14	1.619	134
TOYOTA	429	43	4.461	428
TRABANT	-	-	-	1
VOLKS WAGEN	336	42	4.192	234
VOLVO	93	2	886	20
WESTFIELF SPORT	-	-	-	1
<b>TOTAL</b>	<b>3.369</b>	<b>482</b>	<b>40.160</b>	<b>4.327</b>

**Graph 4. Sales of new passenger cars:  
August 2013**



**Graph 5. Sales of new passenger cars:  
January - August 2013**

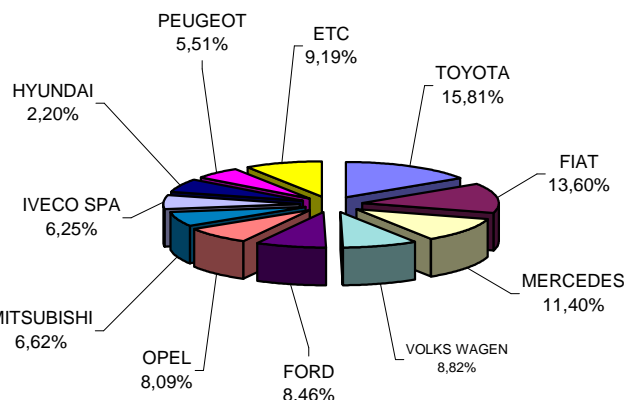


(1) The cumulative data for February - June 2013 have been revised.

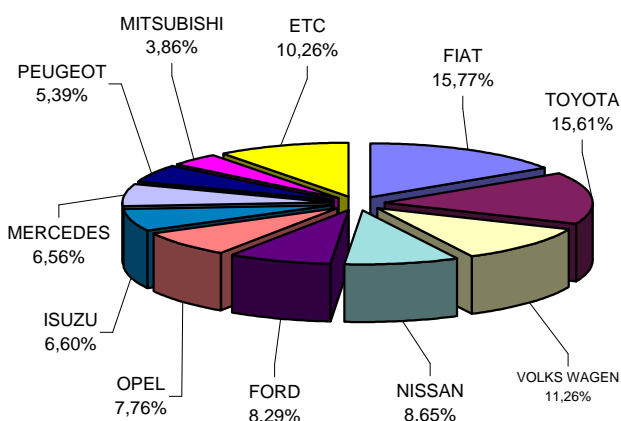
**Table 4. Sales of new and used lorries by make:  
August and January - August <sup>(1)</sup> 2013**

Makes	Lorries			
	August		Jan. - Aug. <sup>(1)</sup>	
	new	used	new	used
CADILLAC	-	-	-	2
CHEVROLET	-	1	1	2
CHONGQI	-	-	1	1
CHRYSLER	-	-	-	1
CITROEN	6	12	73	91
D.K.W.	-	-	-	1
DACIA	-	1	1	4
DAEWOO	-	-	-	3
DAF	2	6	14	95
DAIHATSU	-	2	-	15
DODGE	-	1	-	1
FIAT	37	53	392	540
FIAT-IVECO	-	4	-	40
FORD	23	75	206	630
G.M.C.	-	-	-	1
GENERAL MOTORS	-	-	-	1
HONDA	-	-	-	1
HYUNDAI	-	3	-	14
ISUZU	10	10	164	89
IVECO MAGIRUS	-	-	7	12
IVECO SPA	17	3	43	38
KIA	-	1	-	5
MAHINDRA & MAHI	-	-	5	-
MAN	1	23	8	252
MAN TRUCK & BUS	1	-	28	2
MAZDA	1	22	5	199
MERCEDES	31	142	163	1.364
MITSUBISHI	18	43	96	485
NISSAN	17	64	215	661
OAF	-	-	-	1
OPEL	22	51	193	550
PEUGEOT	15	12	134	74
PFAU	-	-	-	2
PIAGGIO	2	1	22	11
RELIANT	-	-	-	1
RENAULT	-	33	13	247
ROVER	-	1	-	3
SCANIA	1	18	16	167
SEAT	1	1	4	14
SKODA	-	18	1	133
SOVAB	-	-	-	1
SSANGYONG	-	-	1	-
SUBARU	-	-	-	1
SUZUKI	-	1	-	9
TOYOTA	43	34	388	368
VOLKS WAGEN	24	42	280	453
VOLVO	-	20	12	182
<b>TOTAL</b>	<b>272</b>	<b>698</b>	<b>2.486</b>	<b>6.767</b>

**Graph 6. Sales of new lorries:  
August 2013**



**Graph 7. Sales of new lorries:  
January - August 2013**



(1) The cumulative data for February - June 2013 have been revised.

**Table 5. Sales of new and used buses by make:  
August and January - August <sup>(1)</sup> 2013**

Makes	Buses			
	August		Jan. - Aug. <sup>(1)</sup>	
	new	used	new	used
BOVA	-	2	-	17
CAR-BUS.NET	-	-	1	-
DAF	-	-	-	2
DENNIS	-	-	-	1
ERDUMAN	1	-	12	-
EOBUS	-	2	-	23
FIAT	-	-	-	1
FIAT AUTO GROUP	-	-	13	-
FIAT-IVECO	-	-	-	1
FORD	-	-	-	5
G.AUWARTER	-	-	-	1
G.B.M. SPA	-	-	-	3
IRIZAR	-	-	-	1
ISUZU	-	-	1	-
IVECO SPA	-	-	4	1
KASSBOHRER	-	-	-	8
MAN	-	1	-	5
MERCEDES	3	19	32	75
NEOPLAN	-	-	-	7
OPEL	-	-	2	-
RENAULT	-	-	-	1
SCANIA	-	1	-	8
SETRA	-	1	-	20
SIN MARCA	-	-	-	1
TEMSA	-	1	1	3
TRANSBUS DENNIS	-	-	-	1
VAN HOOL	-	-	-	1
VOLKS WAGEN	-	-	-	9
VOLVO	-	2	-	9
<b>TOTAL</b>	<b>4</b>	<b>29</b>	<b>66</b>	<b>204</b>

(1) The cumulative data for February - June 2013 have been revised.

**Graph 8. Sales of new buses: January - August 2013**

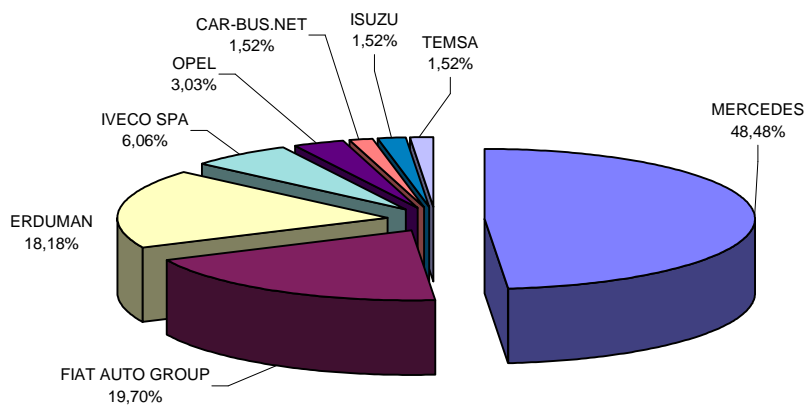
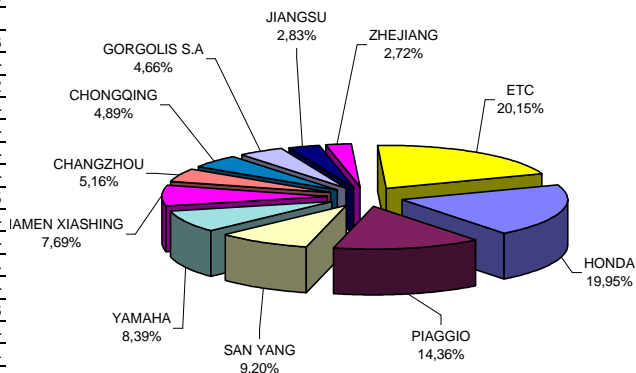


Table 6. Sales of new and used motorcycles by make or manufacturer:

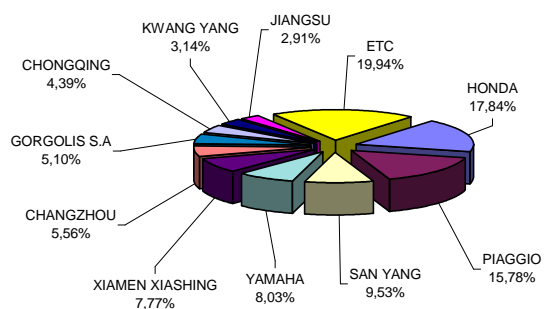
August and January - August <sup>(1)</sup> 2013

Makes	Motorcycles			
	August		Jan. - Aug. <sup>(1)</sup>	
	new	used	new	used
AEON MOTOR	6	-	60	1
AMSTRONG	-	-	6	-
APRILIA	-	4	3	24
B.M.W.	22	2	266	16
BETA MOTOR SPA	2	-	12	-
BOMBARDIER INC.	-	-	10	6
BUYANG GROUP CO FA - G300	2	-	18	-
CHANGZHOU	133	2	1,236	11
CHONGQING	126	2	977	10
CIXI KINGRING	-	-	4	1
DAELIM	11	-	58	3
DINLI METAL	1	-	15	-
DUCATI	5	1	73	2
EGIMOTORS	-	-	10	-
G.H.E. MOTORHIS	1	-	24	-
GAS GAS	-	-	6	-
GENERIC MOTOR	2	-	8	-
GORGOLIS S.A	120	1	1,134	5
GUANGDONG TAYO	3	-	23	-
GUANGZHOU	-	-	31	-
HARLEY DAVIDSON	5	-	12	14
HERCHEE INDUSTR	-	-	12	-
HONDA	514	20	3,966	168
HUSQVARNA	4	-	17	-
HYOSUNG MOTORS	10	-	28	4
JIANGMEN	1	-	10	-
JIANGMEN DA CHA	1	-	51	-
JIANGMEN SINO-H	1	-	3	-
JIANGSU	73	-	646	1
JI-EE INDUSTRY	1	-	2	1
JINAN QINGQI	1	-	7	1
JONWAY	1	-	14	-
K.L. S.P.A	17	-	159	3
K.T.M	17	1	195	10
KAWASAKI	11	1	105	21
KEEWAY	-	-	3	3
KWANG YANG	63	6	698	96
LIFAN INDUSTRY	10	-	204	-
LML LIMITED (E STAR DELUXE, V	2	-	42	-
LONCIN GROUP	-	-	8	-
LUOYANG NORTHEM	19	-	75	1
MALAGUTI SPA	-	2	3	9
MBK INDUSTRIE	66	1	377	23
MG MOTO	33	-	203	2
MODENA	39	1	269	3
MOTIVE POWER	-	-	5	-
MOTO GUZZI	2	-	9	-
MOTO SPA	-	-	5	5
MV AGUSTA	-	-	4	-
NACIONAL MOTOR	2	-	60	-
NEW FORCE MOTOR	2	-	10	-
NINGBO	-	-	3	-
NIPPONIA SA	-	-	9	-
ODES	3	-	21	-
PEUGEOT	44	1	376	4
PIAGGIO	370	27	3,508	201
QUADRO	-	-	24	-
R.G.P. SRL	-	-	3	-
RIEJU	-	-	3	-
ROYAL ENFIELD	-	-	3	-
S&T MOTORS CO L	-	-	2	1
SAN YANG	237	-	2,119	20
SANYOY, CHUANGTA	1	-	1	-
SHANGAI HONLIN	1	-	6	-
SHANGHAI SHENKE	-	-	3	-
SKY TEAM	8	-	31	-
STANDARD MOTOR	-	-	3	1
SUZUKI	20	9	260	85
TAIWAN GOLDEN B	17	-	87	1
TAIZHOU	10	-	47	1
TRIUMPH	13	1	144	5
XIAMEN XIASHING	198	3	1,728	11
XINGYUE GROUP C	1	-	7	-
YAMAHA	216	12	1,786	132
YONGKANG JINLIN	2	-	3	-
ZENGCHENG HAILI	2	-	12	1
ZHEJIANG	70	1	385	6
ZHONGSHAN GUOCH	1	-	1	-
ZONGSHEN INDUST	33	-	464	2
ETC	0	2	16	19
<b>TOTAL</b>	<b>2,576</b>	<b>100</b>	<b>22,231</b>	<b>934</b>

Graph 9. Sales of new motorcycles: August 2013



Graph 10. Sales of new motorcycles: January - August 2013



(1) The cumulative data for February - June 2013 have been revised.

## EXPLANATORY NOTES

### Survey on the issuing of new road motor vehicle circulation licenses

The survey on the issuing of new motor vehicle circulation licenses is a census survey. The released data give information, at country level, on the brand and type of the motor vehicle, as well as whether it is new or used. The primary data derive from the Division of Informatics of the Ministry of Infrastructure, Transport and Networks and are based on the issuing of new circulation licences. The survey does not include vehicles that move on rails, trolley busses, agricultural tractors and machinery. In addition, the following are excluded: all motor vehicles of the Armed Forces, Police, Fire Brigade, State Services, Diplomatic Corps, Foreign Missions, and Invalids of Wars, as well as motorcycles with a cylinder capacity less than 50 cc.

### Legal basis

Legislative Decree 3627/56, Law 2392/96, Law 3832/2010

### Reference Period

August 2013

### Coverage

The production of monthly data is based on the registers held by the Ministry of Infrastructure, Transport and Networks, which records all the monthly changes observed in the vehicle registration licences at country level.

### Definitions

**Road motor vehicle** is any vehicle that, irrespective of the number of wheels, is moved by an engine and is designed to transport persons or cargo or both of them, either they are on the same single vehicle or on a trailer carried by the main motor vehicle. **New** road motor vehicle is any motor vehicle that is registered for the first time in Greece during the reference month and has not been put into circulation in any other country. **Used motor** vehicle is any motor vehicle that is registered for the first time in Greece and has been imported as a used one from abroad

**Passenger motor vehicle:** it is a motor vehicle designed to carry mostly people, having no more than 9 seats, including the driver's seat.

**Bus:** it is a motor vehicle, which is designed to carry mostly people, having more than 10 seats, including the driver's seat. (In the corresponding tables of this Press Release, this category also includes articulated buses.)

**Lorry:** it is motor vehicle designed to carry mostly cargo. (In the corresponding tables of this Press Release, this category also includes tractors, tow trucks, articulated tractors, and trucks with trailers).

**Motorcycle:** any two-wheeled motor vehicle, with or without sidecar, with maximum authorized design speed over 45 km/h, or in case it is powered by a combustion engine, with a cylinder capacity of 50 cc or over (In the corresponding tables of this Press Release, this category also includes the three-wheeled motor vehicles – motor tricycles).

**Tricycle motor vehicle:** it is a motor vehicle with three symmetrical wheels with maximum authorized design speed over 45 km/h, or in case it is powered by a combustion engine, with a cylinder capacity over the 50 cc. This category also includes four-wheel vehicles, except the light four-wheel motorcycles, whose empty vehicle tare (excluding the weight of the fuel or mixture of fuel-oil or the weight of the batteries for electric cars) is up to 400 kg in the case the vehicle is designed for passenger use or up to 550 kg in case the vehicle is designed to carry cargo and whose engine is up to 15KW.

### Methodology

Census Survey

### References

More information (graphs, tables) concerning the survey on the issuing of new motor vehicle circulation licences are available on the webpage of ELSTAT, [www.statistics.gr](http://www.statistics.gr), under the link "Statistical Themes > Transport > Vehicles > Vehicle > Vehicle Licensing – Vehicle Fleet