



HELLENIC REPUBLIC



MINISTRY OF ECONOMY AND FINANCE



GENERAL SECRETARIAT OF
THE NATIONAL STATISTICAL
SERVICE OF GREECE

Piraeus, 5 - 6 - 2008

PRESS RELEASE

Vehicle Circulation Licences

MAY 2008

The General Secretariat of the National Statistical Service of Greece announces that during the period of January - May 2008, 171.111 road motor cars (both new and used abroad) were put into circulation for the first time, representing a decrease of 1,6% compared to the corresponding period of 2007. An increase of 3,8% had been observed during the January - May 2007 period, compared to the one of 2006.

Furthermore, the circulation of new motorcycles (above 50cc) during 2008 amounted in 38.162 against 39.302 in 2007 representing a 2,9% decrease. An increase of 15,4% had been observed during the period of January - May 2007 compared to the corresponding one of 2006.

Responsible: Konstantinos Menexes

Phone : (0030) 210 4852500

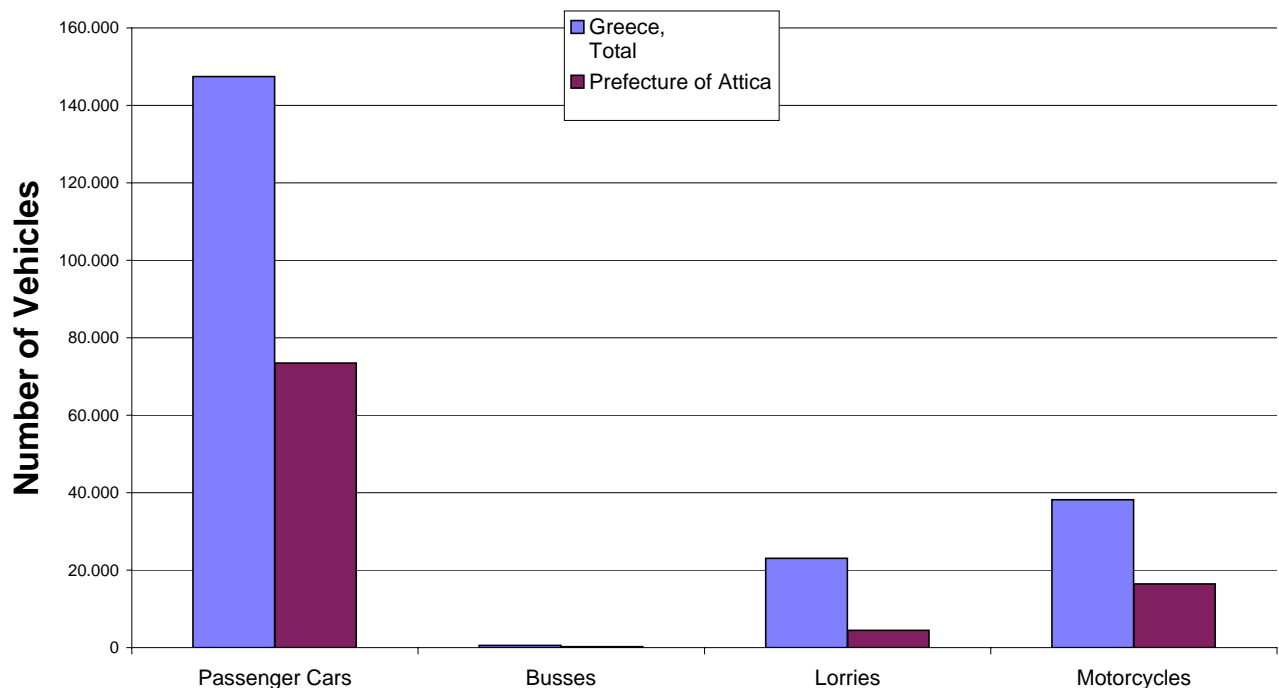
FAX : (0030) 210 4852496

e-mail : menexesk@statistics.gr

**Table 1: Road motor vehicles, both new and used, put into circulation for the first time in Greece:
2006 - 2008**

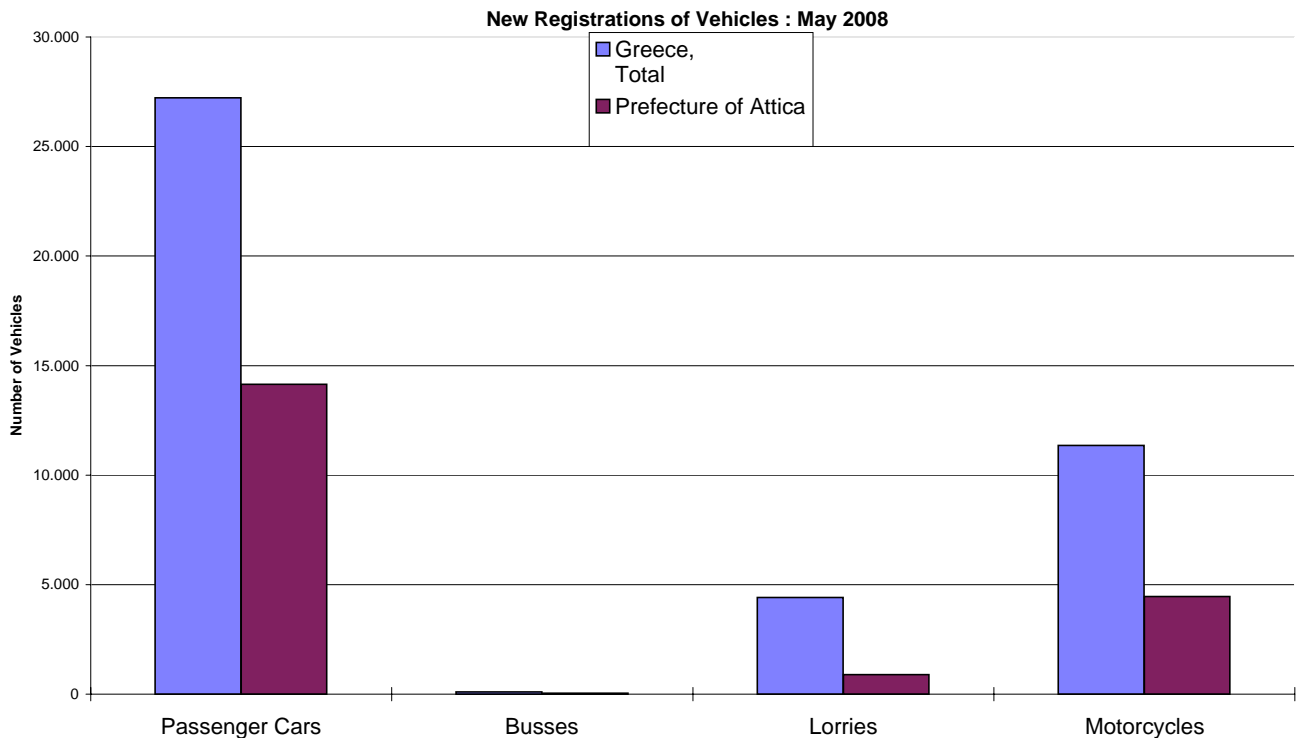
Category of Road Motor Vehicles	January - May						Change (%)			
	2008		2007		2006		2008/2007		2007/2006	
	Total	Used	Total	Used	Total	Used	Total	Used	Total	Used
Greece, total										
Road Motor Vehicles, total	209.273	29.246	213.207	33.312	201.664	31.611	-1,8	-12,2	5,7	5,4
1. Road motor cars	171.111	27.959	173.905	31.583	167.618	29.777	-1,6	-11,5	3,8	6,1
Passenger Cars	147.455	15.614	149.730	18.570	142.862	16.974	-1,5	-15,9	4,8	9,4
Busses	587	216	476	230	547	285	23,3	-6,1	-13,0	-19,3
Lorries	23.069	12.129	23.699	12.783	24.209	12.518	-2,7	-5,1	-2,1	2,1
2. Motorcycles > 50 cc	38.162	1.287	39.302	1.729	34.046	1.834	-2,9	-25,6	15,4	-5,7
Prefecture of Attica										
Road Motor Vehicles, total	94.641	7.811	96.967	9.073	90.803	9.251	-2,4	-13,9	6,8	-1,9
1. Road motor cars	78.196	7.445	80.614	8.592	76.431	8.635	-3,0	-13,3	5,5	-0,5
Passenger Cars	73.510	5.506	75.828	6.627	71.567	6.640	-3,1	-16,9	6,0	-0,2
Busses	241	57	182	70	206	76	32,4	-18,6	-11,7	-7,9
Lorries	4.445	1.882	4.604	1.895	4.658	1.919	-3,5	-0,7	-1,2	-1,3
2. Motorcycles > 50 cc	16.445	366	16.353	481	14.372	616	0,6	-23,9	13,8	-21,9

New Registrations of Vehicles : January - May 2008



**Table 2: Road motor vehicles, both new and used, put into circulation for the first time in Greece :
2006 - 2008**

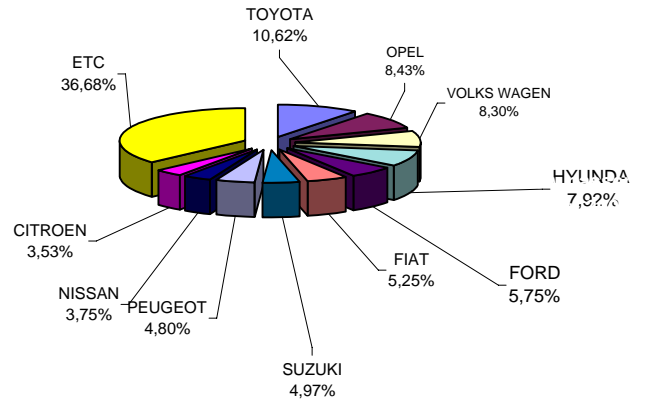
Category of Road Motor Vehicles	May						Change (%)			
	2008		2007		2006		2008/2007		2007/2006	
	Total	Used	Total	Used	Total	Used	Total	Used	Total	Used
Greece, total										
Road Motor Vehicles, total	43.090	5.399	50.248	6.424	46.086	6.550	-14,2	-16,0	9,0	-1,9
1. Road motor cars	31.738	5.050	37.422	6.004	34.733	6.021	-15,2	-15,9	7,7	-0,3
Passenger Cars	27.221	2.496	32.564	3.317	29.724	3.331	-16,4	-24,8	9,6	-0,4
Busses	99	56	142	56	97	59	-30,3	0,0	46,4	-5,1
Lorries	4.418	2.498	4.716	2.631	4.912	2.631	-6,3	-5,1	-4,0	0,0
2. Motorcycles > 50 cc	11.352	349	12.826	420	11.353	529	-11,5	-16,9	13,0	-20,6
Prefecture of Attica										
Road Motor Vehicles, total	19.524	1.463	23.791	1.704	20.483	1.947	-17,9	-14,1	16,1	-12,5
1. Road motor cars	15.073	1.382	18.791	1.589	16.346	1.794	-19,8	-13,0	15,0	-11,4
Passenger Cars	14.141	975	17.798	1.183	15.285	1.373	-20,5	-17,6	16,4	-13,8
Busses	38	15	51	20	32	9	-25,5	-25,0	59,4	122,2
Lorries	894	392	942	386	1.029	412	-5,1	1,6	-8,5	-6,3
2. Motorcycles > 50 cc	4.451	81	5.000	115	4.137	153	-11,0	-29,6	20,9	-24,8



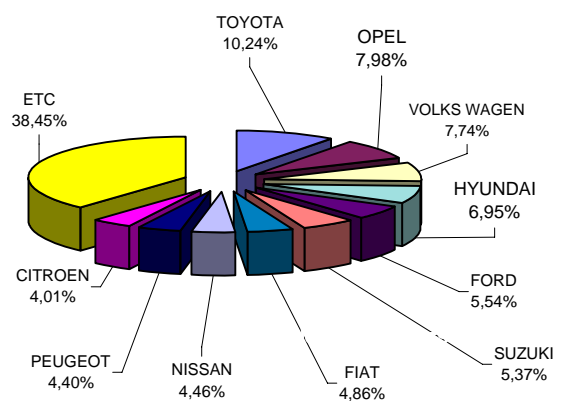
**Table 3. Sales of new and used passenger cars per make:
May and January - May 2008**

Makes	Passenger cars			
	May		Jan - May	
	New	Used	New	Used
ADLER	-	-	-	1
ADRIA	-	-	5	1
ALFA ROMEO	109	5	506	49
AMERICAN MOTORS	-	-	-	1
ASTON MARTIN	-	1	3	7
AUDI	623	166	2.948	1.015
AUTOCARABANS - RIMOR SPA	-	-	3	-
B.M.W.	809	397	4.864	2.669
BENTLEY	5	-	10	5
CADILLAC	4	-	17	1
CHANGA CO	-	-	1	1
CHEVROLET	638	4	2.642	14
CHEVROLET (GENERAL MOTOR)	2	-	15	4
CHRYSLER	228	15	1.342	141
CITROEN	874	24	5.284	89
DAEWOO	-	2	1	18
DAIHATSU	569	16	2.949	120
DODGE	62	-	484	1
FERRARI	1	-	7	15
FIAT	1.299	46	6.414	232
FIAT AUTO SPA	9	-	20	-
FORD	1.421	39	7.308	249
G.M.C.	-	1	-	3
GENERAL MOTORS	2	5	11	35
HOBBY WOHNWAGEN	1	-	1	-
HONDA	460	77	3.231	544
HONGXING	-	-	4	-
HUMMER	1	-	23	-
HYMER AG	-	-	-	4
HYUNDAI	1.957	3	9.157	59
ISUZU	-	1	-	2
JAGUAR	48	3	117	50
JIANGLING LANDWIND	1	-	7	1
KIA	646	-	4.274	25
LADA	25	-	190	2
LAMBORGHINI	1	1	5	5
LANCIA	98	3	518	14
LAND ROVER	52	19	276	126
LOTUS	2	2	4	7
MASERATI	3	-	11	2
MAZDA	817	26	4172	152
MERCEDES	773	784	3.936	4.922
MINI	383	17	2.572	126
MITSUBISHI	383	17	2.572	126
MORGAN	-	-	1	-
N.S.U.	-	-	-	1
NG TF ROADSTER	-	1	-	1
NISSAN	928	15	5.876	167
OPEL	2085	75	10515	425
PEUGEOT	1.186	16	5.799	95
PIAGGIO	-	-	-	1
PONTIAC	-	-	-	1
PORSCHE	38	62	242	349
RENAULT	117	21	761	130
ROLLS ROYCE	-	1	-	2
SAAB	125	1	442	39
SEA S.P.A	-	-	3	-
SEAT	754	5	4.680	61
SHIJIAZHANG SH	16	-	45	2
SHUANGHUAN AUTO	2	-	2	-
SIMCA	-	1	-	1
SKODA	830	4	5148	28
SMART	403	354	2.027	1.810
SSANGYONG	18	-	146	1
SUBARU	189	5	932	54
SUZUKI	1.228	48	7.081	338
TOYOTA	2.626	84	13.499	529
TRIGANO	-	-	4	2
VAUXHALL	-	-	-	2
VEB SACHSENRING	-	-	-	1
VOLKS WAGEN	2053	139	10210	822
VOLVO	204	7	1096	33
WILLYS	-	-	-	7
TOTAL http://www.statistics.gr	24.725	2.496	131.841	65.614

**Sales of new passenger cars :
May 2008**



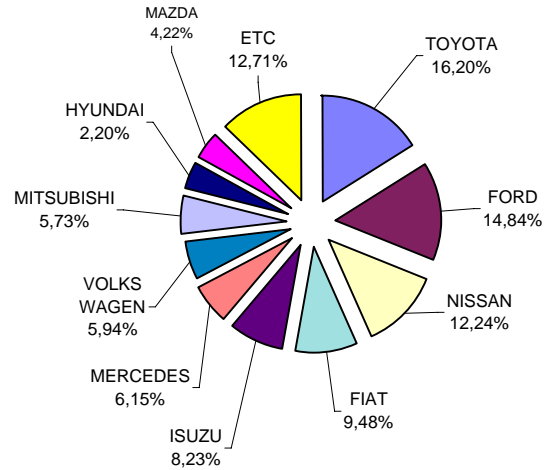
**Sales of new passenger cars :
January - May 2008**



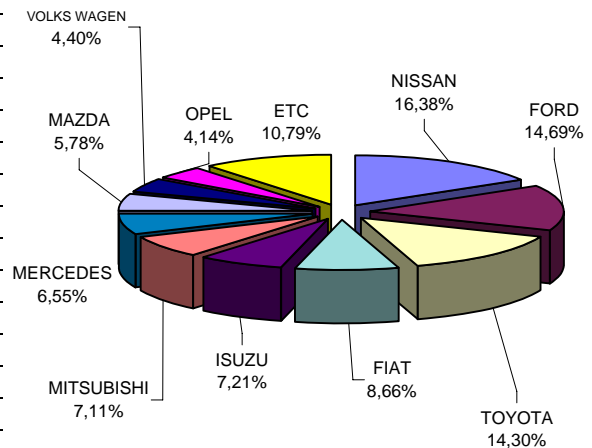
**Table 4. Sales of new and used lorries per make:
May and January - May 2008**

Makes	Lorries			
	May		Jan - May	
	New	Used	New	Used
ASTRA	-	-	13	-
AUDI	-	-	-	2
AVIA	-	-	-	1
B.M.W.	-	-	-	1
BORCO-HOEHNS	-	1	-	1
CHEVROLET	-	2	-	11
CHRYSLER	-	2	-	7
CITROEN	50	10	360	64
CONY	-	-	-	1
DAEWOO	-	1	-	2
DAF	9	20	56	120
DAIHATSU	-	7	1	20
DODGE	-	5	-	9
FAP	-	1	-	1
FIAT	182	50	947	207
FIAT-IVECO	-	15	-	76
FORD	285	178	1.607	874
G.M.C.	-	-	-	1
GENERAL MOTORS	-	1	-	8
GRECAV SPA	2	-	4	-
HANOMAG	-	-	-	1
HYUNDAI	-	11	-	58
ISUZU	158	31	789	146
IVECO MAGIRUS	2	5	6	29
IVECO SPA	47	4	143	10
KIA	-	1	-	10
LEYLAND	-	-	-	1
LLOYD	-	-	-	1
MAGIRUS	-	1	-	3
MAN	21	135	107	588
MAZDA	81	54	632	259
MERCEDES	118	815	717	4.028
MITSUBISHI	110	247	778	1.215
NISSAN	235	174	1.792	924
OAF	-	-	1	2
OPEL	82	82	453	387
PEUGEOT	21	9	128	53
PFAU	-	-	-	1
PIAGGIO	20	12	82	29
RENAULT	8	60	53	251
ROVER	1	2	3	6
SAMSUNG	-	1	-	1
SCANIA	15	48	62	223
SEAT	1	6	9	31
SKODA	-	23	1	122
SOVAB	3	1	5	4
SOVAM	-	-	-	1
SSANGYONG	10	-	27	-
STEYER	-	1	-	6
SUZUKI	-	14	1	65
TOYOTA	311	133	1.564	673
VAUXHALL	-	-	-	1
VOLKS WAGEN	114	226	481	1.154
VOLVO	33	109	117	440
WARTBURG	1	-	1	-
TOTAL	1.920	2.498	10.940	12.129

Sales of new lorries : May 2008

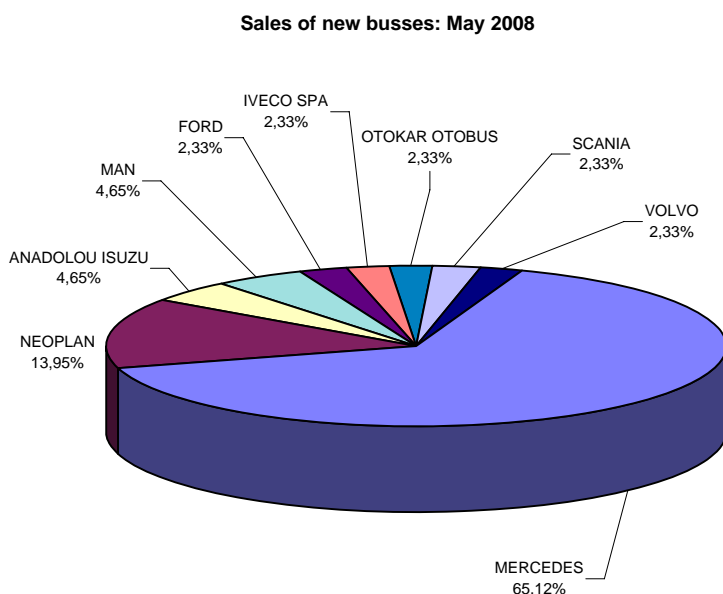


Sales of new lorries: January - May 2008

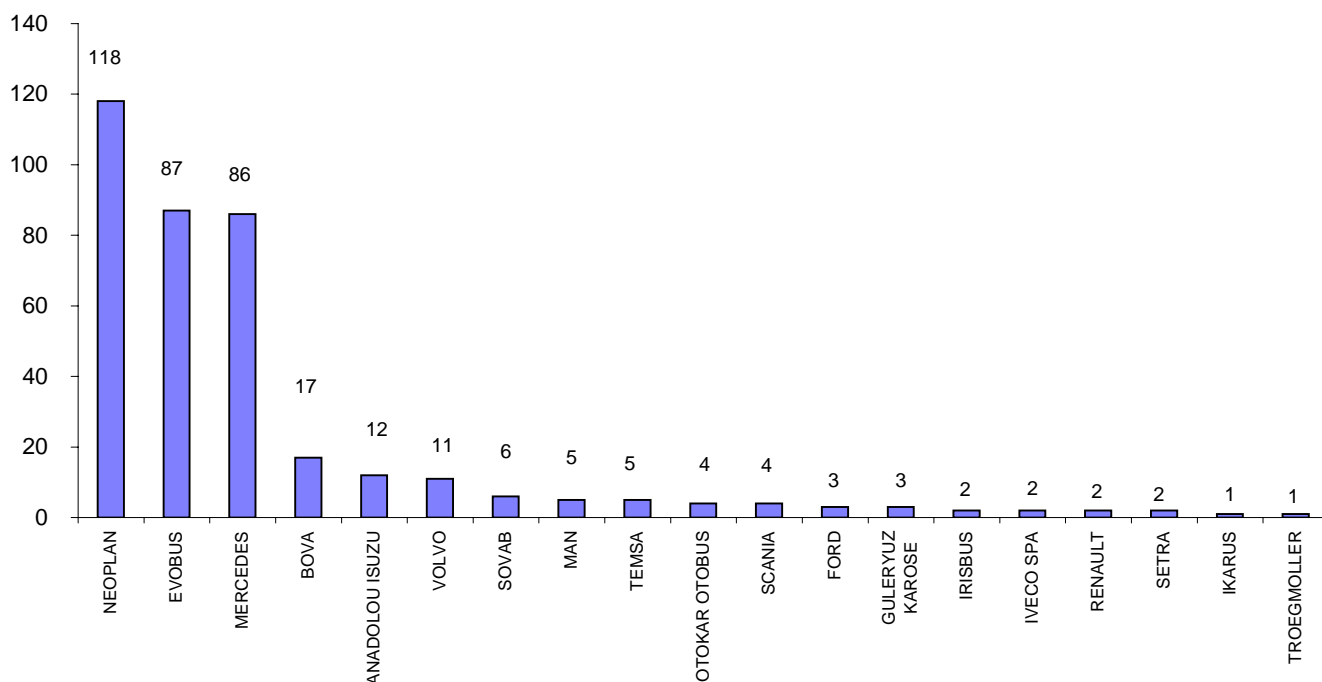


**Table 5. Sales of new and used busses per make:
May and January - May 2008**

Makes	Busses			
	May		Jan - May	
	new	used	new	used
ANADOLOU ISUZU	2	-	12	-
BOVA	-	3	17	18
DAF	-	-	-	1
EOS-COACH	-	1	-	1
EVOBUS	-	7	87	20
FIAT-IVECO	-	-	-	2
FORD	1	-	3	2
G.AUWARTER	-	-	-	8
G.B.M. SPA	-	-	-	1
GULERYUZ KAROSE	-	-	3	-
IKARUS	-	-	1	-
IRISBUS	-	-	2	-
IVECO SPA	1	-	2	-
KASSBOHRER	-	8	-	21
MAGIRUS	-	-	-	1
MAN	2	3	5	19
MERCEDES	28	22	86	84
MITSUBISHI	-	-	-	1
NEOPLAN	6	1	118	8
OTOKAR OTOBUS	1	-	4	-
RENAULT	-	1	2	1
SCANIA	1	1	4	4
SETRA	-	4	2	10
SOVAB	-	-	6	1
TEMSA	-	-	5	-
TROEGMOLLER	-	2	1	6
VOLKS WAGEN	-	1	-	2
VOLVO	1	2	11	5
TOTAL	43	56	371	216



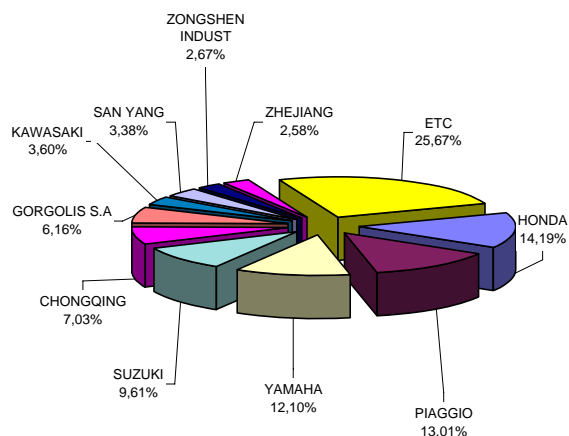
Sales of new busses : January - May 2008



**Table 6. Sales of new and used motorcycles per make:
May and January - May 2008**

Makes	Motorcycles			
	May		Jan - May	
	new	used	new	used
AEON MOTOR	42	-	122	-
AIE MOTOR	1	-	4	-
AMSTRONG	4	-	10	-
APRILIA	26	4	115	21
B.M.W.	197	61	729	221
BENZHOU VEHICLE	8	-	30	-
BMW	69	-	102	-
BOMBARDIER INC.	-	-	10	-
BOXER S.R.L	9	-	28	-
CARTER BROTHERS	7	-	19	-
CHANGZHOU	230	-	627	-
CHINA JIALING	60	-	182	-
CHONGQING	774	-	2.617	2
CHUNFENG	29	-	106	-
CIXI KINGRING	8	-	21	-
DAELIM	57	-	199	-
DALL'ARA SRL	1	-	7	-
DAZON	1	-	8	2
DINLI METAL	3	-	11	-
DRESEL MCT	7	-	9	2
DUCATI	61	5	198	14
EGIMOTORS	-	-	14	-
FUXIN MOTOR IND	2	-	6	-
GAGIVA MOTOR	1	1	3	2
GAS GAS	3	-	16	1
GEELY	-	-	25	-
GORGOLIS S.A	678	1	2.419	1
GUANGZHOU	269	-	755	1
HARLEY DAVIDSON	17	8	94	26
HERCHEE INDUSTR	6	-	25	-
HONDA	1.561	83	5.308	293
HYOSUNG MOTORS	42	-	112	-
JAWA	4	-	4	-
JIANGMEN	60	1	288	1
JIANGSU	115	-	334	-
JINAN QINGQI	4	-	13	-
JINCHENG	4	-	8	-
JONWAY	13	-	47	-
JORDAN MOTORS	5	-	11	-
K.L. S.P.A	58	-	177	-
K.T.M	112	1	471	12
KAWASAKI	396	44	1.269	160
KEEWAY	97	-	285	1
KWANG YANG	178	2	537	6
LIFENG GROUP CO	3	-	11	-
LONCIN GROUP	18	-	72	1
LUOYANG NORTHEM	1	-	10	-
MALAGUTI SPA	30	1	103	5
MBK INDUSTRIE	237	5	720	13
MOTIVE POWER	16	-	49	-
MOTO GUZZI	16	1	46	2
MOTO SPA	7	-	33	-
MOTO ZETA SRL	1	-	20	-
MV AGUSTA	17	-	57	3
NACIONAL MOTOR	21	-	60	-
NANCHANG KE CHI	2	-	6	-
NEW FORCE MOTOR	15	-	33	-
NINGBO LONGJIA	1	-	9	1
PAOLETTI RACING	2	-	13	-
PEUGEOT	78	1	268	2
PIAGGIO	1.431	17	4.863	64
POLARIS	1	-	5	1
R.G.P. SRL	3	-	25	-
REINMECH CORPOR	2	-	5	-
ROYAL ENFIELD	5	-	17	-
SAN YANG	372	-	1.316	2
SHANGAI HONLIN	5	-	17	-
SHANGDONG LIANG	4	-	7	-
SHANGHAI GOKA	8	-	22	-
SHANGHAI JIALIN	22	-	63	-
SHANGHAI JMSTAR	4	-	11	-
SHANGHAI SHENKE	7	-	9	-
SKY TEAM	20	-	54	-
STANDARD MOTOR	8	-	11	-
SUZUKI	1.057	48	3.669	160
TAIWAN GOLDEN B	13	-	44	1
TAIZHOU	280	1	1.086	2
TRIUMPH	60	1	247	1
UNIVERSAL	2	-	3	-
WENLING ZHENSHE	10	-	16	-
XINGYUE GROUP C	24	-	69	1
YAMAHA	1.331	58	4.565	244
ZENGCHENG HAILI	50	-	167	-
ZHEJIANG	284	1	704	4
ZHONGSHAN GUOCH	16	-	38	-
ZONGSHEN INDUST	294	-	925	1
ETC	6	4	32	13
TOTAL	11.003	349	36.875	1.287

Sales of new motorcycles : May 2008



Sales of new motorcycles : January - May 2008

