



HELLENIC REPUBLIC

HELLENIC STATISTICAL AUTHORITY

Piraeus, 21 March 2014

PRESS RELEASE

GREEK MERCHANT FLEET: JANUARY 2014

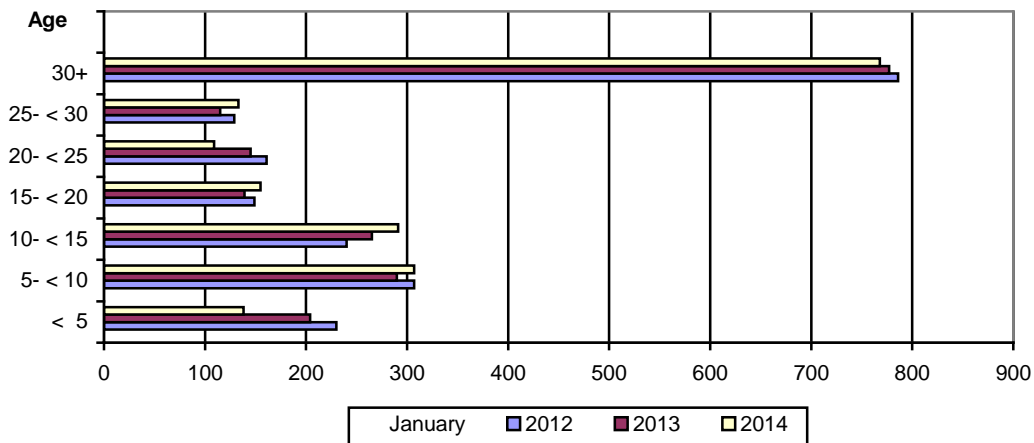
(Provisional data)

The Greek Merchant Fleet, for vessels of 100 GRT and over, decreased by 1,8% in January 2014 compared to January 2013, while the Greek Merchant Fleet recorded a decline of 3,3% in January 2013 compared to January 2012 (Table 1).

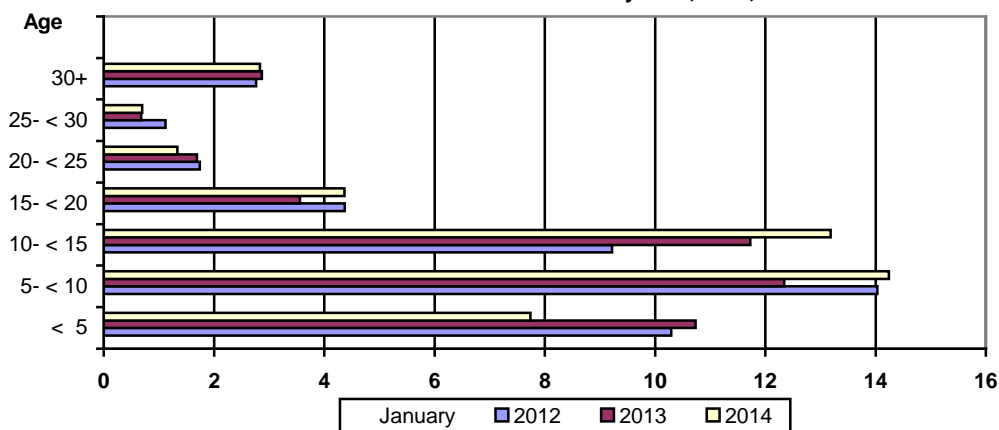
The gross tonnage of the Greek Merchant Fleet, for vessels of 100 GRT and over, increased by 1,8% in January 2014 compared to January 2013, while in January 2013 compared to January 2012 it was up by 0,1% (Table 1).

Chart 1. Distribution of the Greek merchant ships of 100 GRT and over, by age groups.

Number of ships at the end of January 2012, 2013, 2014



Million GRT at the end of January 2012, 2013, 2014



Information:
Division of Statistics on Trade and Services
Section Maritime Transport Statistics
Kleftogiannis Elpidia
Tel : 213 135 3087
Fax: 213 135 3059
email : Kleftoge@statistics.gr

Table 1. Greek Merchant Fleet of 100 GRT and over : January 2012, 2013, 2014

Type of ships	January									
	2012		2013		2014		Change%			
	Number of ships	Tonnage (GRT)	Number of ships	Tonnage (GRT)	Number of ships	Tonnage (GRT)	Number of ships	Tonnage (GRT)	Number of ships	Tonnage (GRT)
Total	2.002	43.542.963	1.935	43.603.382	1.901	44.399.910	-3,3	0,1	-1,8	1,8
Cargo	534	15.927.381	519	16.030.659	508	15.872.790	-2,8	0,6	-2,1	-1,0
Tankers	537	26.042.772	529	26.123.932	531	27.118.440	-1,5	0,3	0,4	3,8
Passenger ships	687	1.498.328	646	1.374.732	625	1.338.623	-6,0	-8,2	-3,3	-2,6
Other	244	74.482	241	74.059	237	70.057	-1,2	-0,6	-1,7	-5,4

**Table 2. Distribution of the Greek Merchant ships of 100 GRT and over by tonnage groups:
January 2012, 2013, 2014.**

Tonnage groups	January					
	2012		2013		2014	
	Number of ships	Tonnage (GRT)	Number of ships	Tonnage (GRT)	Number of ships	Tonnage (GRT)
Total	2.002	43.542.963	1.935	43.603.382	1.901	44.399.910
100 -< 500	816	205.985	780	198.117	758	192.011
500- < 3.000	366	458.729	351	440.358	344	438.060
3.000 -< 7.000	80	357.673	72	323.390	69	309.643
7.000- < 10.000	28	236.697	27	228.670	25	210.969
10.000- < 20.000	57	855.644	49	745.062	43	661.337
20.000 -< 30.000	92	2.423.458	90	2.409.750	96	2.600.815
30.000 +	563	39.004.777	566	39.258.035	566	39.987.075

**Table 3. Distribution of the Greek Merchant ships of 100 GRT and over, by age groups :
January 2012, 2013, 2014**

Age groups	January					
	2012		2013		2014	
	Number of ships	Tonnage (GRT)	Number of ships	Tonnage (GRT)	Number of ships	Tonnage (GRT)
Total	2.002	43.542.963	1.935	43.603.382	1.901	44.399.910
< 5	230	10.292.065	204	10.734.086	138	7.735.865
5- < 10	307	14.031.469	290	12.342.068	307	14.242.886
10- < 15	240	9.221.512	265	11.729.513	291	13.185.025
15- < 20	149	4.372.077	139	3.560.789	155	4.368.346
20- < 25	161	1.741.131	145	1.689.513	109	1.333.833
25- < 30	129	1.121.125	115	676.981	133	698.032
30+	786	2.763.584	777	2.870.432	768	2.835.923

METHODOLOGICAL NOTES

- Greek Merchant Fleet Survey** The Survey on the Greek Merchant Fleet has been producing results since 1964. It has been conducted on a monthly basis without any major methodological changes ever since. The purpose of the survey is to fully record statistical data on the number and basic characteristics of the Greek merchant ships, thus depicting the evolution over the course of time of the Greek merchant fleet.
- Legal Framework** The survey is conducted in compliance with the joint Ministerial Decision (No 6792/G-81/11-4-97) signed by the Minister of National Economy and the Minister of Mercantile Marine.
- Reference Period** The results of the survey refer to the end of January 2014
- Coverage** The survey covers all domestic Port Authorities, as well as Greek Consular Port Authorities abroad, which keep ship registers. These Authorities have to send a report on a monthly basis to the Hellenic Statistical Authority (ELSTAT) pertaining to the changes in the Greek merchant ships registered in their ship registers.
- Definitions**
- Merchant ship:** Seagoing self-propelled vessel, at least of 10 GRT, designed for the carriage of goods, transport of passengers, for fishing, towing or specially fitted out for other commercial maritime activities.
- Greek merchant fleet:** The total number of the merchant ships registered in Greece, which belong to natural or legal persons residing on the Greek territory. The Greek flag carried by these ships means that all their maritime activities (subsidies for ship building, cargo limitations and other tax provisions) are governed by commercial and economic rules which are laid down by the respective Greek authorities.
- Gross Register Tonnage (GRT):** unit of measurement of the total volume in cubic feet of the spaces within the hull and of the enclosed spaces above the deck which are available for carrying goods, food, passengers and crew. It equals to the volume of 100 cubic feet or 2.83 m³.
- Net Register Tonnage (NRT):** unit of measurement derived from the gross tonnage by deducting allowances in respect of spaces used for the crew, navigating and propelling machinery, fuel and water ballasts, and other spaces not used for passengers or cargo.
- Age of ship:** indicated by the year of original construction of the hull or that of the hull containing the engine room.
- Methodology** .
It is an exhaustive survey conducted by all domestic Port Authorities and Greek Consular Port Authorities abroad, which report to ELSTAT, on a monthly basis, on changes in the ships pertaining to: a) new registrations of ships in the ship registers, b) change in the name of a ship, c) change of ownership, d) transfers to or from a different port, e) deletion of a ship from a ship register, f) final measurement – remeasurement of ships, g) replacement of the ship's engine.
All these data, after being fully processed, are used to update, through a specially designed software application, the Official Register of Greek Merchant Ships. This Register is used for the production of monthly and annual statistical results.
- References** Further information (tables, charts) concerning the Survey on the Greek Merchant Fleet can be found on the webpage of ELSTAT (www.statistics.gr), under the link: - *Statistical Themes - Transport- Maritime transport – Greek Merchant Fleet of 10 GRT and over.*