



HELLENIC REPUBLIC

HELLENIC STATISTICAL AUTHORITY

Piraeus, 17 January 2014

PRESS RELEASE

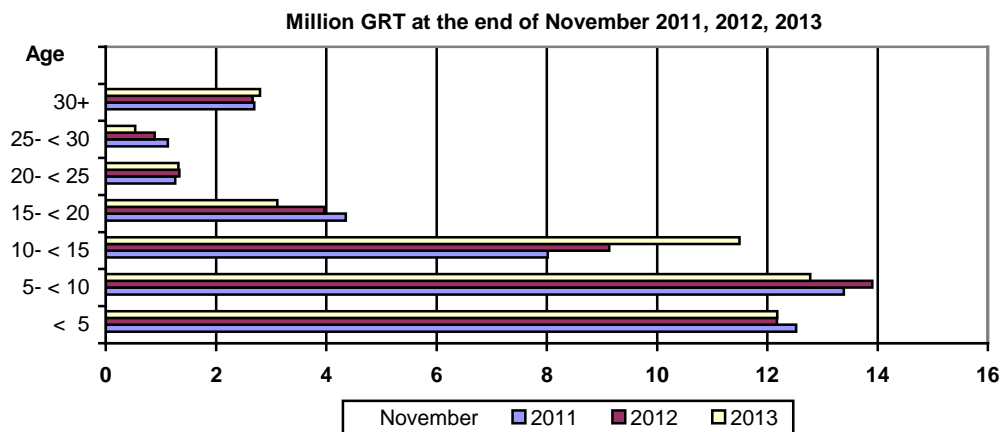
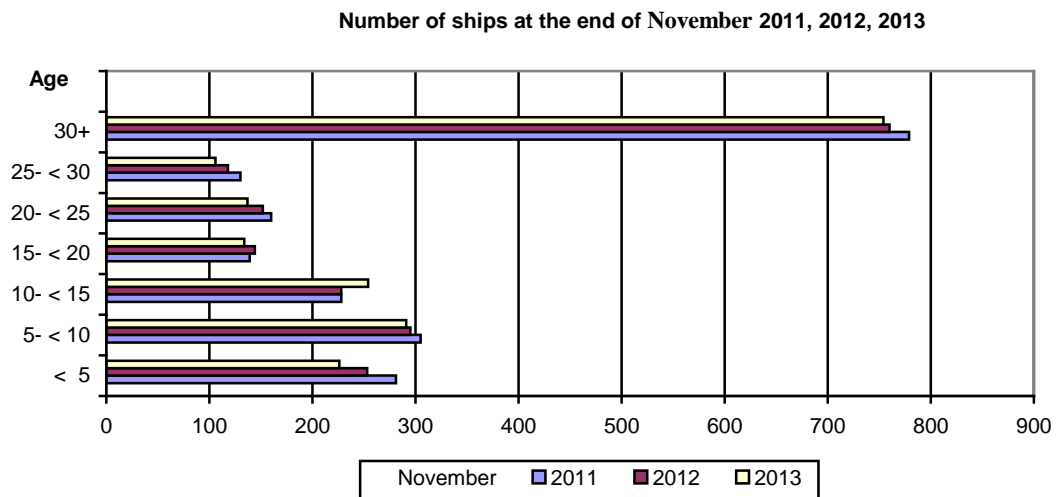
GREEK MERCHANT FLEET: NOVEMBER 2013

(Provisional data)

The Greek Merchant Fleet, for vessels of 100 GRT and over, decreased by 2,5% in November 2013 compared with November 2012, while the Greek Merchant Fleet recorded a decline of 3,6% in November 2012 compared with November 2011 (Table 1).

The gross tonnage of the Greek Merchant Fleet, for vessels of 100 GRT and over, increased by 0,3% in November 2013 compared with November 2012, while in November 2012 compared with November 2011 it was up by 1,6% (Table 1).

Chart 1. Distribution of the Greek merchant ships of 100 GRT and over, by age groups.



Information:
Division of Statistics on Trade and Services
Section Maritime Transport Statistics
Kleftogianne Elpida
Tel : 213 135 3087
Fax: 213 135 3059
email : Kleftoge@statistics.gr

Table 1. Greek Merchant Fleet of 100 GRT and over : November 2011, 2012, 2013

Type of ships	November									
	2011		2012		2013		Change%			
	Number of ships	Tonnage (GRT)	Number of ships	Tonnage (GRT)	Number of ships	Tonnage (GRT)	Number of ships	Tonnage (GRT)	Number of ships	Tonnage (GRT)
Total	2.022	43.364.331	1.950	44.075.811	1.902	44.217.757	-3,6	1,6	-2,5	0,3
Cargo	542	16.044.289	526	16.179.023	508	15.771.585	-3,0	0,8	-3,4	-2,5
Tankers	538	25.731.370	533	26.453.440	530	27.036.536	-0,9	2,8	-0,6	2,2
Passenger ships	697	1.514.003	650	1.368.699	629	1.340.106	-6,7	-9,6	-3,2	-2,1
Other	245	74.669	241	74.649	235	69.530	-1,6	0,0	-2,5	-6,9

**Table 2. Distribution of the Greek Merchant ships of 100 GRT and over by tonnage groups:
November 2011, 2012, 2013.**

Tonnage groups	November					
	2011		2012		2013	
	Number of ships	Tonnage (GRT)	Number of ships	Tonnage (GRT)	Number of ships	Tonnage (GRT)
Total	2.022	43.364.331	1.950	44.075.811	1.902	44.217.757
100 -< 500	830	209.129	783	198.915	760	192.690
500- < 3.000	372	467.111	355	446.612	344	436.099
3.000 -< 7.000	77	345.271	74	332.678	69	309.643
7.000- < 10.000	29	244.518	27	228.670	25	210.969
10.000- < 20.000	58	873.880	52	793.315	45	692.662
20.000 -< 30.000	95	2.496.057	91	2.426.966	96	2.593.998
30.000 +	561	38.728.365	568	39.648.655	563	39.781.696

**Table 3. Distribution of the Greek Merchant ships of 100 GRT and over, by age groups :
November 2011, 2012, 2013**

Age groups	November					
	2011		2012		2013	
	Number of ships	Tonnage (GRT)	Number of ships	Tonnage (GRT)	Number of ships	Tonnage (GRT)
Total	2.022	43.364.331	1.950	44.075.811	1.902	44.217.757
< 5	281	12.523.009	253	12.174.594	226	12.181.622
5- < 10	305	13.386.896	295	13.905.334	291	12.779.529
10- < 15	228	8.018.824	228	9.134.847	254	11.493.671
15- < 20	139	4.356.557	144	3.967.420	134	3.113.200
20- < 25	160	1.260.503	152	1.337.701	137	1.319.078
25- < 30	130	1.124.155	118	889.593	106	533.640
30+	779	2.694.387	760	2.666.322	754	2.797.017

METHODOLOGICAL NOTES

Greek Merchant Fleet Survey	The Survey on the Greek Merchant Fleet has been producing results since 1964. It has been conducted on a monthly basis without any major methodological changes ever since. The purpose of the survey is to fully record statistical data on the number and basic characteristics of the Greek merchant ships, thus depicting the evolution over the course of time of the Greek merchant fleet.
Legal Framework	The survey is conducted in compliance with the joint Ministerial Decision (No 6792/G-81/11-4-97) signed by the Minister of National Economy and the Minister of Mercantile Marine.
Reference Period	The results of the survey refer to the end of November 2013
Coverage	The survey covers all domestic Port Authorities, as well as Greek Consular Port Authorities abroad, which keep ship registers. These Authorities have to send a report on a monthly basis to the Hellenic Statistical Authority (ELSTAT) pertaining to the changes in the Greek merchant ships registered in their ship registers.
Definitions	<p>Merchant ship: Seagoing self-propelled vessel, at least of 10 GRT, designed for the carriage of goods, transport of passengers, for fishing, towing or specially fitted out for other commercial maritime activities.</p> <p>Greek merchant fleet: The total number of the merchant ships registered in Greece, which belong to natural or legal persons residing on the Greek territory. The Greek flag carried by these ships means that all their maritime activities (subsidies for ship building, cargo limitations and other tax provisions) are governed by commercial and economic rules which are laid down by the respective Greek authorities.</p> <p>Gross Register Tonnage (GRT): unit of measurement of the total volume in cubic feet of the spaces within the hull and of the enclosed spaces above the deck which are available for carrying goods, food, passengers and crew. It equals to the volume of 100 cubic feet or 2.83 m³.</p> <p>Net Register Tonnage (NRT): unit of measurement derived from the gross tonnage by deducting allowances in respect of spaces used for the crew, navigating and propelling machinery, fuel and water ballasts, and other spaces not used for passengers or cargo.</p> <p>Age of ship: indicated by the year of original construction of the hull or that of the hull containing the engine room.</p>
Methodology	<p>It is an exhaustive survey conducted by all domestic Port Authorities and Greek Consular Port Authorities abroad, which report to ELSTAT, on a monthly basis, on changes in the ships pertaining to: a) new registrations of ships in the ship registers, b) change in the name of a ship, c) change of ownership, d) transfers to or from a different port, e) deletion of a ship from a ship register, f) final measurement – remeasurement of ships, g) replacement of the ship's engine.</p> <p>All these data, after being fully processed, are used to update, through a specially designed software application, the Official Register of Greek Merchant Ships. This Register is used for the production of monthly and annual statistical results.</p>
References	Further information (tables, charts) concerning the Survey on the Greek Merchant Fleet can be found on the webpage of ELSTAT (www.statistics.gr), under the link: - <i>Statistical Themes - Transport- Maritime transport – Greek Merchant Fleet of 10 GRT and over.</i>