



HELLENIC REPUBLIC

HELLENIC STATISTICAL AUTHORITY

Piraeus, 19 December 2013

# PRESS RELEASE

## GREEK MERCHANT FLEET: OCTOBER 2013

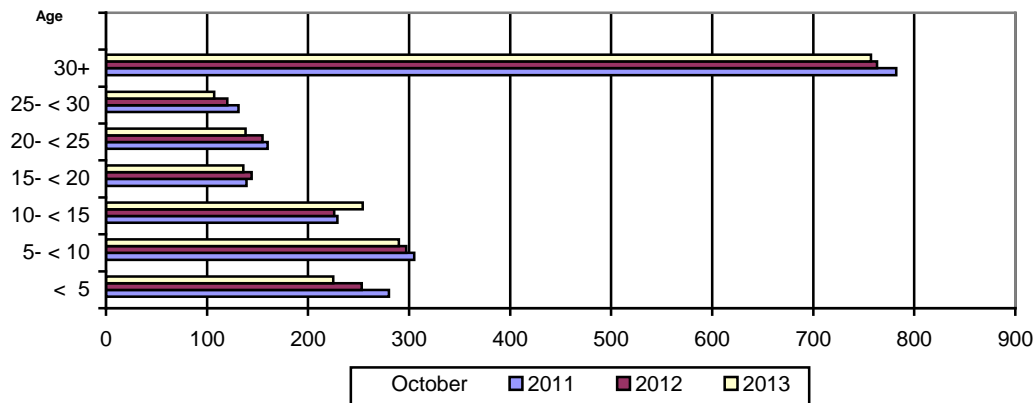
(Provisional data)

The Greek Merchant Fleet, for vessels of 100 GRT and over, decreased by 2,6% in October 2013 compared with October 2012, while the Greek Merchant Fleet recorded a decline of 3,4 in October 2012 compared with October 2011 (Table 1).

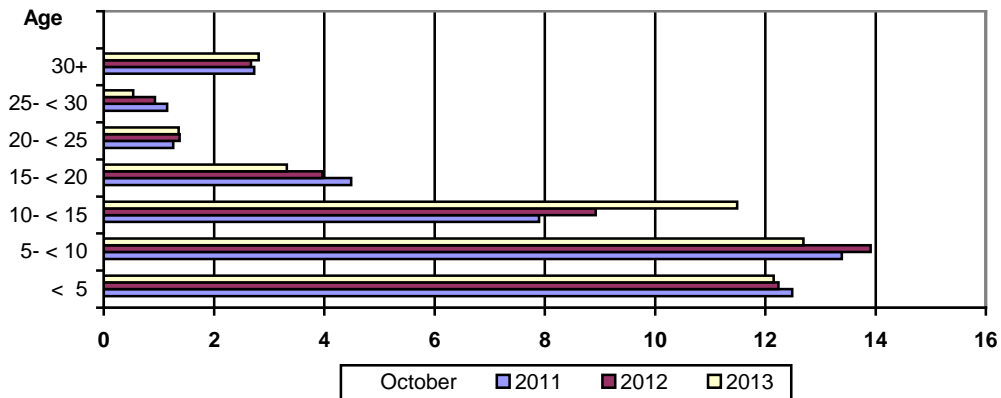
The gross tonnage of the Greek Merchant Fleet, for vessels of 100 GRT and over, increased by 0,8% in October 2013 compared with October 2012, while in October 2012 compared with October 2011 it was up by 1,4 (Table 1).

**Chart 1. Distribution of the Greek merchant ships of 100 GRT and over, by age groups.**

Number of ships at the end of October 2011, 2012, 2013



Million GRT at the end of October 2011, 2012, 2013



Information:

Division of Statistics on Trade and Services

Section Maritime Transport Statistics

Kleftogianne Elpida

Tel : 213 135 3087

Fax: 213 135 3059

email : Kleftoge@statistics.gr

**Table 1. Greek Merchant Fleet of 100 GRT and over : October 2011, 2012, 2013**

Type of ships	October									
	2011		2012		2013		Change%			
	Number of ships	Tonnage (GRT)	Number of ships	Tonnage (GRT)	Number of ships	Tonnage (GRT)	Number of ships	Tonnage (GRT)	Number of ships	Tonnage (GRT)
<b>Total</b>	<b>2.026</b>	<b>43.404.624</b>	<b>1.958</b>	<b>44.006.124</b>	<b>1.907</b>	<b>44.354.604</b>	<b>-3,4</b>	<b>1,4</b>	<b>-2,6</b>	<b>0,8</b>
Cargo	543	16.085.303	528	16.342.680	508	15.740.801	-2,8	1,6	-3,8	-3,7
Tankers	539	25.730.381	532	26.218.498	531	27.216.237	-1,3	1,9	-0,2	3,8
Passenger ships	699	1.514.275	656	1.370.121	630	1.326.760	-6,2	-9,5	-4,0	-3,2
Other	245	74.665	242	74.825	238	70.806	-1,2	0,2	-1,7	-5,4

**Table 2. Distribution of the Greek Merchant ships of 100 GRT and over by tonnage groups:  
October 2011, 2012, 2013.**

Tonnage groups	October					
	2011		2012		2013	
	Number of ships	Tonnage (GRT)	Number of ships	Tonnage (GRT)	Number of ships	Tonnage (GRT)
<b>Total</b>	<b>2.026</b>	<b>43.404.624</b>	<b>1.958</b>	<b>44.006.124</b>	<b>1.907</b>	<b>44.354.604</b>
100 -< 500	832	209.397	790	200.517	762	192.939
500- < 3.000	373	468.486	357	450.594	346	437.323
3.000 -< 7.000	77	345.271	74	332.678	69	309.643
7.000- < 10.000	29	244.518	27	228.670	26	220.740
10.000- < 20.000	58	873.880	52	793.315	46	709.053
20.000 -< 30.000	95	2.496.749	88	2.346.470	94	2.536.125
30.000 +	562	38.766.323	570	39.653.880	564	39.948.781

**Table 3. Distribution of the Greek Merchant ships of 100 GRT and over, by age groups :  
October 2011, 2012, 2013**

Age groups	October					
	2011		2012		2013	
	Number of ships	Tonnage (GRT)	Number of ships	Tonnage (GRT)	Number of ships	Tonnage (GRT)
<b>Total</b>	<b>2.026</b>	<b>43.404.624</b>	<b>1.958</b>	<b>44.006.124</b>	<b>1.907</b>	<b>44.354.604</b>
< 5	280	12.490.022	253	12.236.205	225	12.151.421
5- < 10	305	13.386.896	297	13.907.612	290	12.692.844
10- < 15	229	7.898.172	226	8.925.197	254	11.489.302
15- < 20	139	4.488.267	144	3.967.420	136	3.323.026
20- < 25	160	1.260.503	155	1.374.569	138	1.356.212
25- < 30	131	1.150.350	120	926.565	107	533.787
30+	782	2.730.414	763	2.668.556	757	2.808.012

## METHODOLOGICAL NOTES

- Greek Merchant Fleet Survey** The Survey on the Greek Merchant Fleet has been producing results since 1964. It has been conducted on a monthly basis without any major methodological changes ever since. The purpose of the survey is to fully record statistical data on the number and basic characteristics of the Greek merchant ships, thus depicting the evolution over the course of time of the Greek merchant fleet.
- Legal Framework** The survey is conducted in compliance with the joint Ministerial Decision (No 6792/G-81/11-4-97) signed by the Minister of National Economy and the Minister of Mercantile Marine.
- Reference Period** The results of the survey refer to the end of October 2013
- Coverage** The survey covers all domestic Port Authorities, as well as Greek Consular Port Authorities abroad, which keep ship registers. These Authorities have to send a report on a monthly basis to the Hellenic Statistical Authority (ELSTAT) pertaining to the changes in the Greek merchant ships registered in their ship registers.
- Definitions**
- Merchant ship:** Seagoing self-propelled vessel, at least of 10 GRT, designed for the carriage of goods, transport of passengers, for fishing, towing or specially fitted out for other commercial maritime activities.
- Greek merchant fleet:** The total number of the merchant ships registered in Greece, which belong to natural or legal persons residing on the Greek territory. The Greek flag carried by these ships means that all their maritime activities (subsidies for ship building, cargo limitations and other tax provisions) are governed by commercial and economic rules which are laid down by the respective Greek authorities.
- Gross Register Tonnage (GRT):** unit of measurement of the total volume in cubic feet of the spaces within the hull and of the enclosed spaces above the deck which are available for carrying goods, food, passengers and crew. It equals to the volume of 100 cubic feet or 2.83 m<sup>3</sup>.
- Net Register Tonnage (NRT):** unit of measurement derived from the gross tonnage by deducting allowances in respect of spaces used for the crew, navigating and propelling machinery, fuel and water ballasts, and other spaces not used for passengers or cargo.
- Age of ship:** indicated by the year of original construction of the hull or that of the hull containing the engine room.
- Methodology** .  
It is an exhaustive survey conducted by all domestic Port Authorities and Greek Consular Port Authorities abroad, which report to ELSTAT, on a monthly basis, on changes in the ships pertaining to: a) new registrations of ships in the ship registers, b) change in the name of a ship, c) change of ownership, d) transfers to or from a different port, e) deletion of a ship from a ship register, f) final measurement – remeasurement of ships, g) replacement of the ship's engine.  
All these data, after being fully processed, are used to update, through a specially designed software application, the Official Register of Greek Merchant Ships. This Register is used for the production of monthly and annual statistical results.
- References** Further information (tables, charts) concerning the Survey on the Greek Merchant Fleet can be found on the webpage of ELSTAT ([www.statistics.gr](http://www.statistics.gr)), under the link: - *Statistical Themes - Transport- Maritime transport – Greek Merchant Fleet of 10 GRT and over.*