



HELLENIC REPUBLIC

HELLENIC STATISTICAL AUTHORITY

Piraeus, 16 October 2013

# PRESS RELEASE

## GREEK MERCHANT FLEET: AUGUST 2013

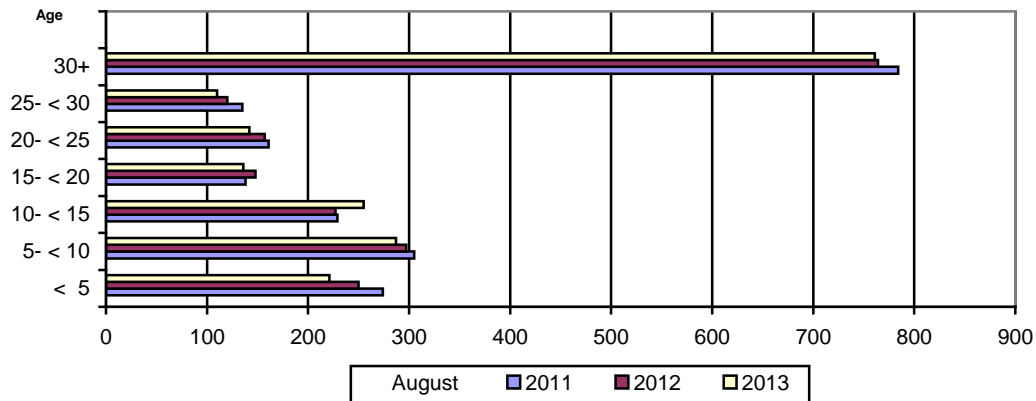
(Provisional data)

The Greek Merchant Fleet, for vessels of 100 GRT and over, decreased by 2,6% in August 2013 compared with August 2012, while the Greek Merchant Fleet recorded a decline of 3,1% in August 2012 compared with August 2011 (Table 1).

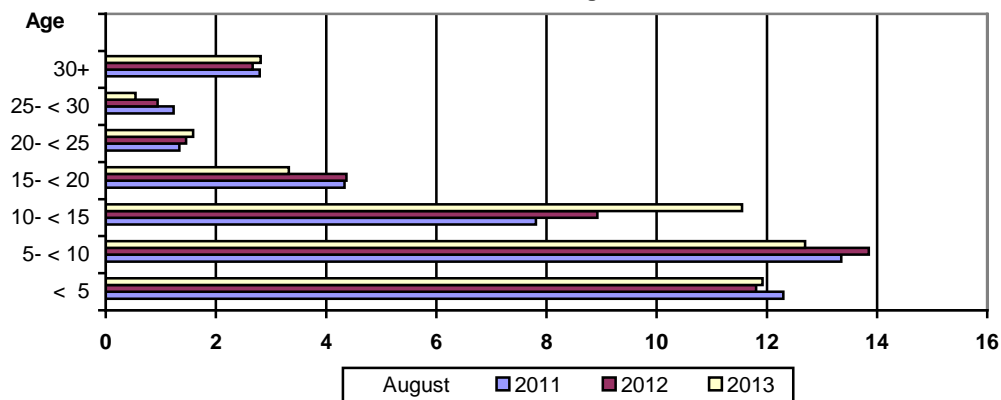
The gross tonnage of the Greek Merchant Fleet, for vessels of 100 GRT and over, increased by 0,9% in August 2013 compared with July 2012, while in August 2012 compared with August 2011 it was up by 2,0% (Table 1).

**Chart 1. Distribution of the Greek merchant ships of 100 GRT and over, by age groups.**

**Number of ships at the end of August 2011, 2012, 2013**



**Million GRT at the end of August 2011, 2012, 2013**



Information:  
Division of Statistics on Trade and Services  
Section Maritime Transport Statistics  
Kleftogianne Elpida  
Tel : 213 135 3087  
Fax: 213 135 3059  
email : Kleftoge@statistics.gr

**Table 1. Greek Merchant Fleet of 100 GRT and over : August 2011, 2012, 2013**

<b>August</b>										
	<b>2011</b>		<b>2012</b>		<b>2013</b>		<b>Change%</b>			
	<b>Number of ships</b>	<b>Tonnage (GRT)</b>	<b>Number of ships</b>	<b>Tonnage (GRT)</b>	<b>Number of ships</b>	<b>Tonnage (GRT)</b>	<b>2012/2011</b>		<b>2013/2012</b>	
<b>Type of ships</b>	<b>Number of ships</b>	<b>Tonnage (GRT)</b>	<b>Number of ships</b>	<b>Tonnage (GRT)</b>	<b>Number of ships</b>	<b>Tonnage (GRT)</b>	<b>Number of ships</b>	<b>Tonnage (GRT)</b>	<b>Number of ships</b>	<b>Tonnage (GRT)</b>
<b>Total</b>	<b>2.026</b>	<b>43.150.931</b>	<b>1.963</b>	<b>44.022.132</b>	<b>1.912</b>	<b>44.417.346</b>	<b>-3,1</b>	<b>2,0</b>	<b>-2,6</b>	<b>0,9</b>
Cargo	545	16.162.443	526	16.143.953	512	15.848.966	-3,5	-0,1	-2,7	-1,8
Tankers	536	25.384.180	534	26.429.792	531	27.169.922	-0,4	4,1	-0,6	2,8
Passenger ships	700	1.529.643	661	1.372.758	632	1.327.693	-5,6	-10,3	-4,4	-3,3
Other	245	74.665	242	75.629	237	70.765	-1,2	1,3	-2,1	-6,4

**Table 2. Distribution of the Greek Merchant ships of 100 GRT and over by tonnage groups:  
August 2011, 2012, 2013.**

Tonnage groups	August					
	2011		2012		2013	
	Number of ships	Tonnage (GRT)	Number of ships	Tonnage (GRT)	Number of ships	Tonnage (GRT)
<b>Total</b>	<b>2.026</b>	<b>43.150.931</b>	<b>1.963</b>	<b>44.022.132</b>	<b>1.912</b>	<b>44.417.346</b>
100 -< 500	833	209.622	792	200.600	762	193.255
500- < 3.000	373	467.767	361	455.197	350	440.596
3.000 -< 7.000	77	346.057	74	332.678	71	317.429
7.000- < 10.000	29	244.518	27	228.670	26	220.740
10.000- < 20.000	58	881.003	52	791.223	45	692.283
20.000 -< 30.000	97	2.551.168	87	2.316.502	95	2.562.019
30.000 +	559	38.450.796	570	39.697.262	563	39.991.024

**Table3. Distribution of the Greek Merchant ships of 100 GRT and over, by age groups :  
August 2011, 2012, 2013**

Age groups	August					
	2011		2012		2013	
	Number of ships	Tonnage (GRT)	Number of ships	Tonnage (GRT)	Number of ships	Tonnage (GRT)
<b>Total</b>	<b>2.026</b>	<b>43. 150.931</b>	<b>1.963</b>	<b>44.022.132</b>	<b>1.912</b>	<b>44.417.346</b>
< 5	274	12.301.418	250	11.806.430	221	11.921.522
5- < 10	305	13.351.525	297	13.850.815	287	12.692.483
10- < 15	229	7.805.736	227	8.926.624	255	11.547.405
15- < 20	138	4.331.465	148	4.369.802	136	3.323.026
20- < 25	161	1.333.924	157	1.455.969	142	1.583.556
25- < 30	135	1.232.411	120	943.565	110	539.338
30+	784	2.794.452	764	2.668.927	761	2.810.016

## METHODOLOGICAL NOTES

<b>Greek Merchant Fleet Survey</b>	The Survey on the Greek Merchant Fleet has been producing results since 1964. It has been conducted on a monthly basis without any major methodological changes ever since. The purpose of the survey is to fully record statistical data on the number and basic characteristics of the Greek merchant ships, thus depicting the evolution over the course of time of the Greek merchant fleet.
<b>Legal Framework</b>	The survey is conducted in compliance with the joint Ministerial Decision (No 6792/G-81/11-4-97) signed by the Minister of National Economy and the Minister of Mercantile Marine.
<b>Reference Period</b>	The results of the survey refer to the end of August 2013
<b>Coverage</b>	The survey covers all domestic Port Authorities, as well as Greek Consular Port Authorities abroad, which keep ship registers. These Authorities have to send a report on a monthly basis to the Hellenic Statistical Authority (ELSTAT) pertaining to the changes in the Greek merchant ships registered in their ship registers.
<b>Definitions</b>	<p><b>Merchant ship:</b> Seagoing self-propelled vessel, at least of 10 GRT, designed for the carriage of goods, transport of passengers, for fishing, towing or specially fitted out for other commercial maritime activities.</p> <p><b>Greek merchant fleet:</b> The total number of the merchant ships registered in Greece, which belong to natural or legal persons residing on the Greek territory. The Greek flag carried by these ships means that all their maritime activities (subsidies for ship building, cargo limitations and other tax provisions) are governed by commercial and economic rules which are laid down by the respective Greek authorities.</p> <p><b>Gross Register Tonnage (GRT):</b> unit of measurement of the total volume in cubic feet of the spaces within the hull and of the enclosed spaces above the deck which are available for carrying goods, food, passengers and crew. It equals to the volume of 100 cubic feet or 2.83 m<sup>3</sup>.</p> <p><b>Net Register Tonnage (NRT):</b> unit of measurement derived from the gross tonnage by deducting allowances in respect of spaces used for the crew, navigating and propelling machinery, fuel and water ballasts, and other spaces not used for passengers or cargo.</p> <p><b>Age of ship:</b> indicated by the year of original construction of the hull or that of the hull containing the engine room.</p>
<b>Methodology</b>	<p>It is an exhaustive survey conducted by all domestic Port Authorities and Greek Consular Port Authorities abroad, which report to ELSTAT, on a monthly basis, on changes in the ships pertaining to: a) new registrations of ships in the ship registers, b) change in the name of a ship, c) change of ownership, d) transfers to or from a different port, e) deletion of a ship from a ship register, f) final measurement – remeasurement of ships, g) replacement of the ship's engine.</p> <p>All these data, after being fully processed, are used to update, through a specially designed software application, the Official Register of Greek Merchant Ships. This Register is used for the production of monthly and annual statistical results.</p>
<b>References</b>	Further information (tables, charts) concerning the Survey on the Greek Merchant Fleet can be found on the webpage of ELSTAT ( <a href="http://www.statistics.gr">www.statistics.gr</a> ), under the link: - <i>Statistical Themes - Transport- Maritime transport – Greek Merchant Fleet of 10 GRT and over.</i>