



HELLENIC REPUBLIC

HELLENIC STATISTICAL AUTHORITY

Piraeus, 21 March 2013

# PRESS RELEASE

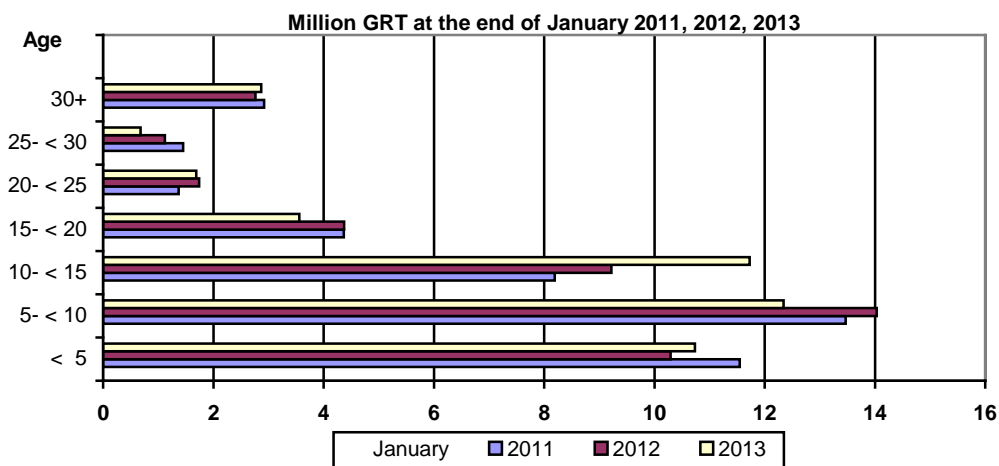
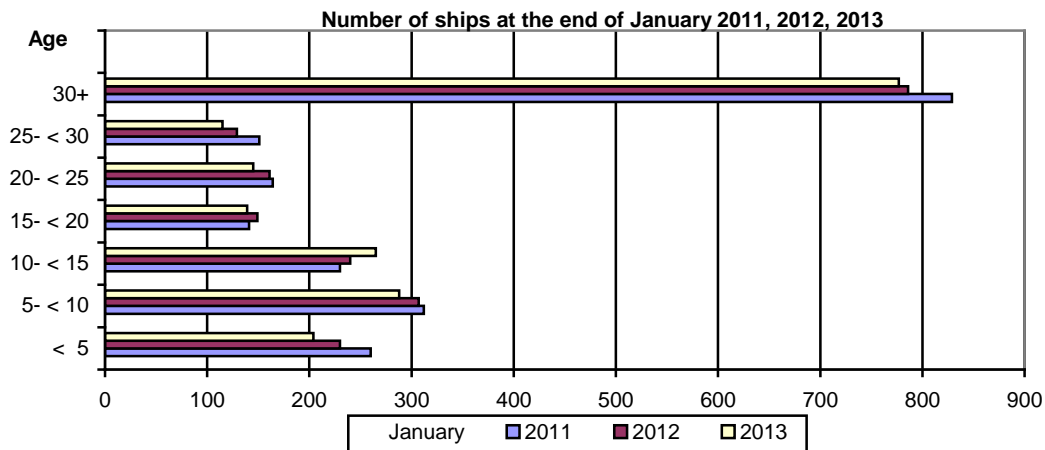
## GREEK MERCHANT FLEET: January 2013

(Provisional data)

The Greek Merchant Fleet, for vessels of 100 GRT and over, decreased by 3,4% in January 2013 compared with January 2012, while the Greek Merchant Fleet recorded a decline of 4,1% in January 2012 compared with January 2011 (Table 1).

The gross tonnage of the Greek Merchant Fleet, for vessels of 100 GRT and over, increased by 0,1% in January 2013 compared with January 2012, while in January 2012 compared with January 2011 it was up by 0,5% (Table 1).

Chart 1. Distribution of the Greek merchant ships of 100 GRT and over, by age groups.



Information:  
Division of Statistics on Trade and Services  
Section Maritime Transport Statistics  
Vassilios Goulas  
Tel : 213 135 2187  
Fax: 213 135 3059  
email : vasgoyl@statistics.gr

**Table 1. Greek Merchant Fleet of 100 GRT and over : January 2011, 2012, 2013**

<b>January</b>										
Type of ships	2011		2012		2013		Change%			
	Number of ships	Tonnage (GRT)	Number of ships	Tonnage (GRT)	Number of ships	Tonnage (GRT)	Number of ships	Tonnage (GRT)	Number of ships	Tonnage (GRT)
<b>Total</b>	<b>2.087</b>	<b>43.310.197</b>	<b>2.002</b>	<b>43.542.963</b>	<b>1.933</b>	<b>43.603.165</b>	<b>-4,1</b>	<b>0,5</b>	<b>-3,4</b>	<b>0,1</b>
Cargo	555	15.974.211	535	15.929.538	520	16.032.816	-3,6	-0,3	-2,8	0,6
Tankers	545	25.705.210	537	26.042.772	529	26.123.932	-1,5	1,3	-1,5	0,3
Passenger ships	728	1.543.109	686	1.496.171	645	1.372.575	-5,8	-3,0	-6,0	-8,3
Other	259	87.667	244	74.482	239	73.842	-5,8	-15,0	-2,0	-0,9

**Table 2. Distribution of the Greek Merchant ships of 100 GRT and over by tonnage groups:  
January 2011, 2012, 2013.**

<b>January</b>						
<b>Tonnage groups</b>	<b>2011</b>		<b>2012</b>		<b>2013</b>	
	<b>Number of ships</b>	<b>Tonnage (GRT)</b>	<b>Number of ships</b>	<b>Tonnage (GRT)</b>	<b>Number of ships</b>	<b>Tonnage (GRT)</b>
<b>Total</b>	<b>2.087</b>	<b>43.310.197</b>	<b>2.002</b>	<b>43.542.963</b>	<b>1.933</b>	<b>43.603.165</b>
100 -< 500	860	216.398	816	205.985	778	197.900
500- < 3.000	399	494.455	366	458.729	351	440.358
3.000 -< 7.000	76	342.236	80	357.673	72	323.390
7.000- < 10.000	29	245.436	28	236.697	27	228.670
10.000- < 20.000	65	987.873	57	855.644	49	745.062
20.000 -< 30.000	101	2.650.307	92	2.423.458	90	2.409.750
30.000 +	557	38.373.492	563	39.004.777	566	39.258.035

**Table3. Distribution of the Greek Merchant ships of 100 GRT and over, by age groups :  
January 2011, 2012, 2013**

<b>January</b>						
<b>Age groups</b>	<b>2011</b>		<b>2012</b>		<b>2013</b>	
	<b>Number of ships</b>	<b>Tonnage (GRT)</b>	<b>Number of ships</b>	<b>Tonnage (GRT)</b>	<b>Number of ships</b>	<b>Tonnage (GRT)</b>
<b>Total</b>	<b>2.087</b>	<b>43.310.197</b>	<b>2.002</b>	<b>43.542.963</b>	<b>1.933</b>	<b>43.603.165</b>
< 5	260	11.546.832	230	10.292.065	204	10.734.086
5- < 10	312	13.467.002	307	14.031.469	288	12.341.851
10- < 15	230	8.189.186	240	9.221.512	265	11.729.513
15- < 20	141	4.366.541	149	4.372.077	139	3.560.789
20- < 25	164	1.370.161	161	1.741.131	145	1.689.513
25- < 30	151	1.451.330	129	1.121.125	115	676.981
30+	829	2.919.145	786	2.763.584	777	2.870.432

## METHODOLOGICAL NOTES

- Greek Merchant Fleet Survey** The Survey on the Greek Merchant Fleet has been producing results since 1964. It has been conducted on a monthly basis without any major methodological changes ever since. The purpose of the survey is to fully record statistical data on the number and basic characteristics of the Greek merchant ships, thus depicting the evolution over the course of time of the Greek merchant fleet.
- Legal Framework** The survey is conducted in compliance with the joint Ministerial Decision (No 6792/G-81/11-4-97) signed by the Minister of National Economy and the Minister of Mercantile Marine.
- Reference Period** The results of the survey refer to the end of January 2013
- Coverage** The survey covers all domestic Port Authorities, as well as Greek Consular Port Authorities abroad, which keep ship registers. These Authorities have to send a report on a monthly basis to the Hellenic Statistical Authority (ELSTAT) pertaining to the changes in the Greek merchant ships registered in their ship registers.
- Definitions**
- Merchant ship:** Seagoing self-propelled vessel, at least of 10 GRT, designed for the carriage of goods, transport of passengers, for fishing, towing or specially fitted out for other commercial maritime activities.
- Greek merchant fleet:** The total number of the merchant ships registered in Greece, which belong to natural or legal persons residing on the Greek territory. The Greek flag carried by these ships means that all their maritime activities (subsidies for ship building, cargo limitations and other tax provisions) are governed by commercial and economic rules which are laid down by the respective Greek authorities.
- Gross Register Tonnage (GRT):** unit of measurement of the total volume in cubic feet of the spaces within the hull and of the enclosed spaces above the deck which are available for carrying goods, food, passengers and crew. It equals to the volume of 100 cubic feet or 2.83 m<sup>3</sup>.
- Net Register Tonnage (NRT):** unit of measurement derived from the gross tonnage by deducting allowances in respect of spaces used for the crew, navigating and propelling machinery, fuel and water ballasts, and other spaces not used for passengers or cargo.
- Age of ship:** indicated by the year of original construction of the hull or that of the hull containing the engine room.
- Methodology** It is an exhaustive survey conducted by all domestic Port Authorities and Greek Consular Port Authorities abroad, which report to ELSTAT, on a monthly basis, on changes in the ships pertaining to: a) new registrations of ships in the ship registers, b) change in the name of a ship, c) change of ownership, d) transfers to or from a different port, e) deletion of a ship from a ship register, f) final measurement – remeasurement of ships, g) replacement of the ship's engine. All these data, after being fully processed, are used to update, through a specially designed software application, the Official Register of Greek Merchant Ships. This Register is used for the production of monthly and annual statistical results.
- References** Further information (tables, charts) concerning the Survey on the Greek Merchant Fleet can be found on the webpage of ELSTAT ([www.statistics.gr](http://www.statistics.gr)), under the link: - *Statistical Themes - Transport- Maritime transport – Greek Merchant Fleet of 10 GRT and over.*