



HELLENIC REPUBLIC

HELLENIC STATISTICAL AUTHORITY

Piraeus, 20 November 2012

PRESS RELEASE

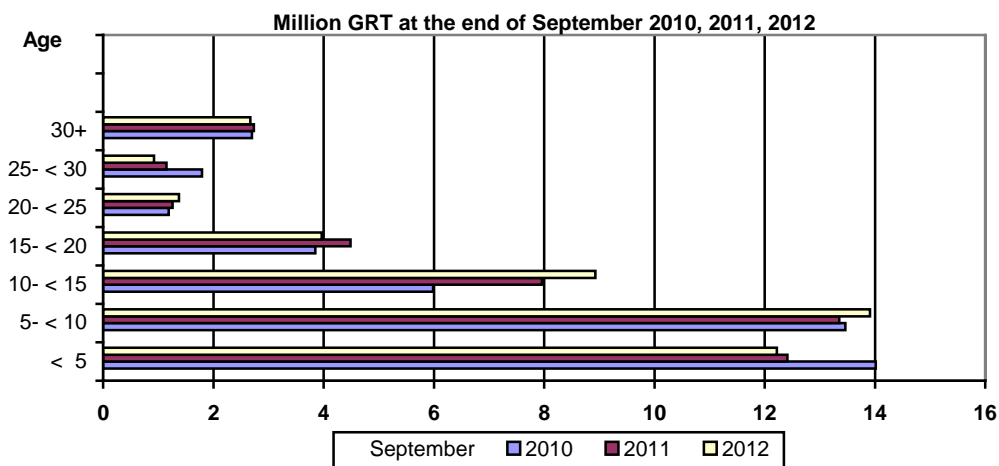
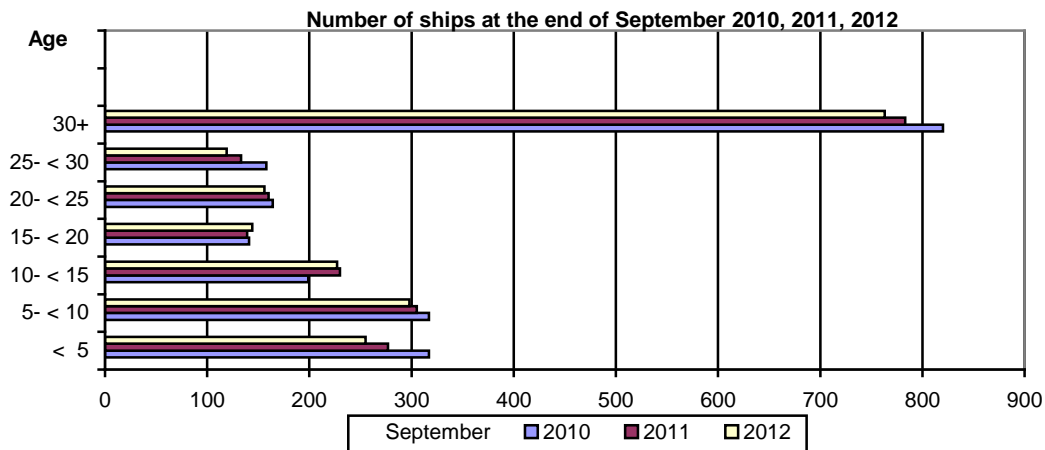
GREEK MERCHANT FLEET: September 2012

(Provisional data)

The Greek Merchant Fleet, for vessels of 100 GRT and over, decreased by 3.2% in September 2012 compared with September 2011. The Greek Merchant Fleet recorded a decline of 4.2% in September 2011 compared with September 2010 (Table 1).

The gross tonnage of the Greek Merchant Fleet, for vessels of 100 GRT and over, increased by 1.5% in September 2012 compared with September 2011, while in September 2011 compared with September 2010 it was up by 0.8% (Table 1).

Chart 1. Distribution of the Greek merchant ships of 100 GRT and over, by age groups.



Information:
Division of Statistics on Trade and Services
Section Maritime Transport Statistics
Vassilios Goulas
Tel : 213 135 2187
Fax: 213 135 3059
email : vasgoyl@statistics.gr

Table 1. Greek Merchant Fleet of 100 GRT and over : September 2010, 2011, 2012

Type of ships	September									
	2010		2011		2012		Change%			
	Number of ships	Tonnage (GRT)	Number of ships	Tonnage (GRT)	Number of ships	Tonnage (GRT)	2011/2010		2012/2011	
						Number of ships	Tonnage (GRT)	Number of ships	Tonnage (GRT)	
Total	2.116	43.001.166	2.027	43.356.420	1.962	43.993.381	-4,2	0,8	-3,2	1,5
Cargo	594	15.768.350	560	16.035.854	545	16.341.366	-5,7	1,7	-2,7	1,9
Tankers	556	25.565.902	539	25.754.363	532	26.218.498	-3,1	0,7	-1,3	1,8
Passenger ships	731	1.601.980	698	1.502.842	659	1.370.492	-4,5	-6,2	-5,6	-8,8
Other	235	64.934	230	63.361	226	63.025	-2,1	-2,4	-1,7	-0,5

**Table 2. Distribution of the Greek Merchant ships of 100 GRT and over by tonnage groups:
September 2010, 2011, 2012.**

Tonnage groups	September					
	2010		2011		2012	
	Number of ships	Tonnage (GRT)	Number of ships	Tonnage (GRT)	Number of ships	Tonnage (GRT)
Total	2.116	43.001.166	2.027	43.356.420	1.962	43.993.381
100 -< 500	875	220.354	832	209.249	791	200.491
500- < 3.000	406	502.464	377	471.306	359	452.652
3.000 -< 7.000	75	340.932	77	346.057	74	332.678
7.000- < 10.000	30	253.257	29	244.518	27	228.670
10.000- < 20.000	68	1.024.944	57	863.124	52	793.315
20.000 -< 30.000	112	2.941.110	95	2.496.749	88	2.346.470
30.000 +	550	37.718.105	560	38.725.417	571	39.639.105

**Table3. Distribution of the Greek Merchant ships of 100 GRT and over, by age groups :
September 2010, 2011, 2012**

Age groups	September					
	2010		2011		2012	
	Number of ships	Tonnage (GRT)	Number of ships	Tonnage (GRT)	Number of ships	Tonnage (GRT)
Total	2.116	43.001.166	2.027	43.356.420	1.962	43.993.381
< 5	317	14.013.625	277	12.414.378	255	12.221.583
5- < 10	317	13.463.610	305	13.351.525	298	13.908.609
10- < 15	199	5.987.491	230	7.957.875	227	8.926.624
15- < 20	141	3.850.263	139	4.488.267	144	3.967.447
20- < 25	164	1.189.237	160	1.258.350	156	1.374.859
25- < 30	158	1.794.646	133	1.152.098	119	925.686
30+	820	2.702.294	783	2.733.927	763	2.668.573

METHODOLOGICAL NOTES

- Greek Merchant Fleet Survey** The Survey on the Greek Merchant Fleet has been producing results since 1964. It has been conducted on a monthly basis without any major methodological changes ever since. The purpose of the survey is to fully record statistical data on the number and basic characteristics of the Greek merchant ships, thus depicting the evolution over the course of time of the Greek merchant fleet.
- Legal Framework** The survey is conducted in compliance with the joint Ministerial Decision (No 6792/G-81/11-4-97) signed by the Minister of National Economy and the Minister of Mercantile Marine.
- Reference Period** The results of the survey refer to the end of September 2012.
- Coverage** The survey covers all domestic Port Authorities, as well as Greek Consular Port Authorities abroad, which keep ship registers. These Authorities have to send a report on a monthly basis to the Hellenic Statistical Authority (ELSTAT) pertaining to the changes in the Greek merchant ships registered in their ship registers.
- Definitions**
- Merchant ship:** Seagoing self-propelled vessel, at least of 10 GRT, designed for the carriage of goods, transport of passengers, for fishing, towing or specially fitted out for other commercial maritime activities.
- Greek merchant fleet:** The total number of the merchant ships registered in Greece, which belong to natural or legal persons residing on the Greek territory. The Greek flag carried by these ships means that all their maritime activities (subsidies for ship building, cargo limitations and other tax provisions) are governed by commercial and economic rules which are laid down by the respective Greek authorities.
- Gross Register Tonnage (GRT):** unit of measurement of the total volume in cubic feet of the spaces within the hull and of the enclosed spaces above the deck which are available for carrying goods, food, passengers and crew. It equals to the volume of 100 cubic feet or 2.83 m³.
- Net Register Tonnage (NRT):** unit of measurement derived from the gross tonnage by deducting allowances in respect of spaces used for the crew, navigating and propelling machinery, fuel and water ballasts, and other spaces not used for passengers or cargo.
- Age of ship:** indicated by the year of original construction of the hull or that of the hull containing the engine room.
- Methodology** .
It is an exhaustive survey conducted by all domestic Port Authorities and Greek Consular Port Authorities abroad, which report to ELSTAT, on a monthly basis, on changes in the ships pertaining to: a) new registrations of ships in the ship registers, b) change in the name of a ship, c) change of ownership, d) transfers to or from a different port, e) deletion of a ship from a ship register, f) final measurement – remeasurement of ships, g) replacement of the ship's engine.
All these data, after being fully processed, are used to update, through a specially designed software application, the Official Register of Greek Merchant Ships. This Register is used for the production of monthly and annual statistical results.
- References** Further information (tables, charts) concerning the Survey on the Greek Merchant Fleet can be found on the webpage of ELSTAT (www.statistics.gr), under the link: - *Statistical Themes - Transport- Maritime transport – Greek Merchant Fleet of 10 GRT and over.*