



HELLENIC REPUBLIC

HELLENIC STATISTICAL AUTHORITY

Piraeus, 16 October 2012

# PRESS RELEASE

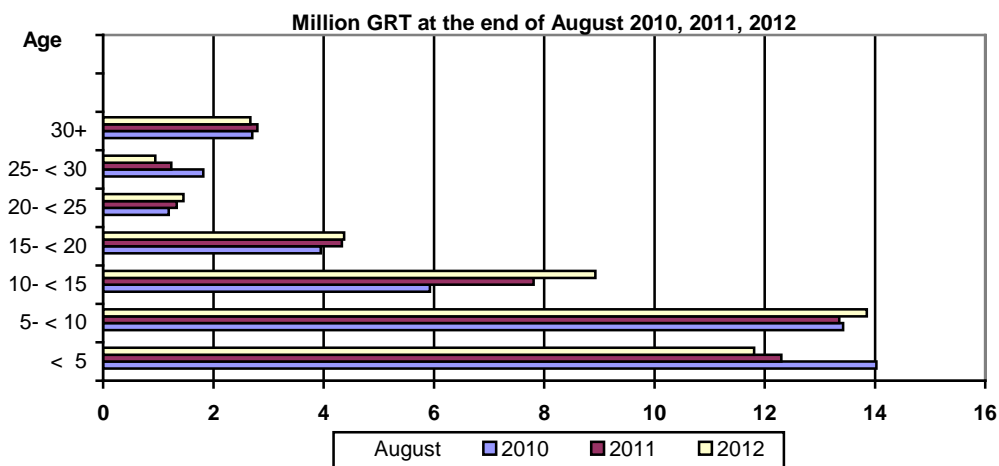
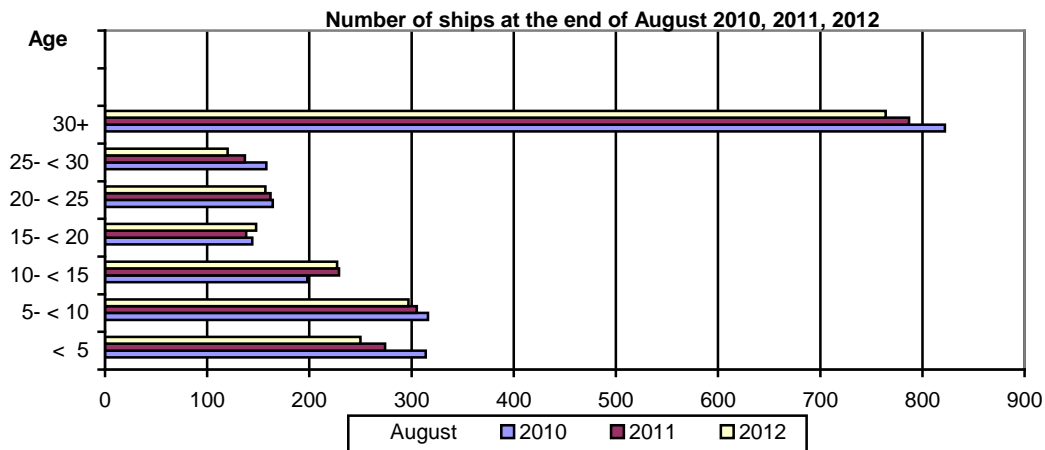
## GREEK MERCHANT FLEET: August 2012

(Provisional data)

The Greek Merchant Fleet, for vessels of 100 GRT and over, decreased by 3.4% in August 2012 compared with August 2011. The Greek Merchant Fleet recorded a decline of 4.0% in August 2011 compared with August 2010 (Table 1).

The gross tonnage of the Greek Merchant Fleet, for vessels of 100 GRT and over, increased by 2.0% in August 2012 compared with August 2011, while in August 2011 compared with August 2010 it was up by 0.3% (Table 1).

Chart 1. Distribution of the Greek merchant ships of 100 GRT and over, by age groups.



Information:  
Division of Statistics on Trade and Services  
Section Maritime Transport Statistics  
Vassilios Goulas  
Tel : 213 135 2187  
Fax: 213 135 3059  
email : vasgoyl@statistics.gr

**Table 1. Greek Merchant Fleet of 100 GRT and over : August 2010, 2011, 2012**

Type of ships	August									
	2010		2011		2012		Change%			
	Number of ships	Tonnage (GRT)	Number of ships	Tonnage (GRT)	Number of ships	Tonnage (GRT)	2011/2010		2012/2011	
							Number of ships	Tonnage (GRT)	Number of ships	Tonnage (GRT)
<b>Total</b>	<b>2.116</b>	<b>43.041.156</b>	<b>2.032</b>	<b>43.155.669</b>	<b>1.963</b>	<b>44.022.132</b>	<b>-4,0</b>	<b>0,3</b>	<b>-3,4</b>	<b>2,0</b>
Cargo	592	15.573.328	565	16.178.269	541	16.157.198	-4,6	3,9	-4,2	-0,1
Tankers	558	25.802.344	536	25.384.180	534	26.429.792	-3,9	-1,6	-0,4	4,1
Passenger ships	732	1.602.347	701	1.529.859	661	1.370.817	-4,2	-4,5	-5,7	-10,4
Other	234	63.137	230	63.361	227	64.325	-1,7	0,4	-1,3	1,5

**Table 2. Distribution of the Greek Merchant ships of 100 GRT and over by tonnage groups:  
August 2010, 2011, 2012.**

Tonnage groups	August					
	2010		2011		2012	
	Number of ships	Tonnage (GRT)	Number of ships	Tonnage (GRT)	Number of ships	Tonnage (GRT)
<b>Total</b>	<b>2.116</b>	<b>43.041.156</b>	<b>2.032</b>	<b>43.155.669</b>	<b>1.963</b>	<b>44.022.132</b>
100 -< 500	877	221.060	833	209.622	792	200.600
500- < 3.000	406	502.015	379	472.505	361	455.197
3.000 -< 7.000	75	340.932	77	346.057	74	332.678
7.000- < 10.000	30	253.257	29	244.518	27	228.670
10.000- < 20.000	68	1.024.944	58	881.003	52	791.223
20.000 -< 30.000	114	2.989.126	97	2.551.168	87	2.316.502
30.000 +	546	37.709.822	559	38.450.796	570	39.697.262

**Table3. Distribution of the Greek Merchant ships of 100 GRT and over, by age groups :  
August 2010, 2011, 2012**

Age groups	August					
	2010		2011		2012	
	Number of ships	Tonnage (GRT)	Number of ships	Tonnage (GRT)	Number of ships	Tonnage (GRT)
<b>Total</b>	<b>2.116</b>	<b>43.041.156</b>	<b>2.032</b>	<b>43.155.669</b>	<b>1.963</b>	<b>44.022.132</b>
< 5	314	14.024.436	274	12.301.418	250	11.806.430
5- < 10	316	13.423.911	305	13.351.525	297	13.850.815
10- < 15	198	5.929.548	229	7.805.736	227	8.926.624
15- < 20	144	3.950.509	138	4.331.465	148	4.369.802
20- < 25	164	1.189.237	162	1.334.774	157	1.455.969
25- < 30	158	1.819.723	137	1.234.159	120	943.565
30+	822	2.703.792	787	2.796.592	764	2.668.927

## METHODOLOGICAL NOTES

- Greek Merchant Fleet Survey** The Survey on the Greek Merchant Fleet has been producing results since 1964. It has been conducted on a monthly basis without any major methodological changes ever since. The purpose of the survey is to fully record statistical data on the number and basic characteristics of the Greek merchant ships, thus depicting the evolution over the course of time of the Greek merchant fleet.
- Legal Framework** The survey is conducted in compliance with the joint Ministerial Decision (No 6792/G-81/11-4-97) signed by the Minister of National Economy and the Minister of Mercantile Marine.
- Reference Period** The results of the survey refer to the end of August 2012.
- Coverage** The survey covers all domestic Port Authorities, as well as Greek Consular Port Authorities abroad, which keep ship registers. These Authorities have to send a report on a monthly basis to the Hellenic Statistical Authority (ELSTAT) pertaining to the changes in the Greek merchant ships registered in their ship registers.
- Definitions**
- Merchant ship:** Seagoing self-propelled vessel, at least of 10 GRT, designed for the carriage of goods, transport of passengers, for fishing, towing or specially fitted out for other commercial maritime activities.
- Greek merchant fleet:** The total number of the merchant ships registered in Greece, which belong to natural or legal persons residing on the Greek territory. The Greek flag carried by these ships means that all their maritime activities (subsidies for ship building, cargo limitations and other tax provisions) are governed by commercial and economic rules which are laid down by the respective Greek authorities.
- Gross Register Tonnage (GRT):** unit of measurement of the total volume in cubic feet of the spaces within the hull and of the enclosed spaces above the deck which are available for carrying goods, food, passengers and crew. It equals to the volume of 100 cubic feet or 2.83 m<sup>3</sup>.
- Net Register Tonnage (NRT):** unit of measurement derived from the gross tonnage by deducting allowances in respect of spaces used for the crew, navigating and propelling machinery, fuel and water ballasts, and other spaces not used for passengers or cargo.
- Age of ship:** indicated by the year of original construction of the hull or that of the hull containing the engine room.
- Methodology** .  
It is an exhaustive survey conducted by all domestic Port Authorities and Greek Consular Port Authorities abroad, which report to ELSTAT, on a monthly basis, on changes in the ships pertaining to: a) new registrations of ships in the ship registers, b) change in the name of a ship, c) change of ownership, d) transfers to or from a different port, e) deletion of a ship from a ship register, f) final measurement – remeasurement of ships, g) replacement of the ship's engine.  
All these data, after being fully processed, are used to update, through a specially designed software application, the Official Register of Greek Merchant Ships. This Register is used for the production of monthly and annual statistical results.
- References** Further information (tables, charts) concerning the Survey on the Greek Merchant Fleet can be found on the webpage of ELSTAT ([www.statistics.gr](http://www.statistics.gr)), under the link: - *Statistical Themes - Transport- Maritime transport – Greek Merchant Fleet of 10 GRT and over.*