



HELLENIC REPUBLIC

HELLENIC STATISTICAL AUTHORITY

Piraeus, 16 July 2012

PRESS RELEASE

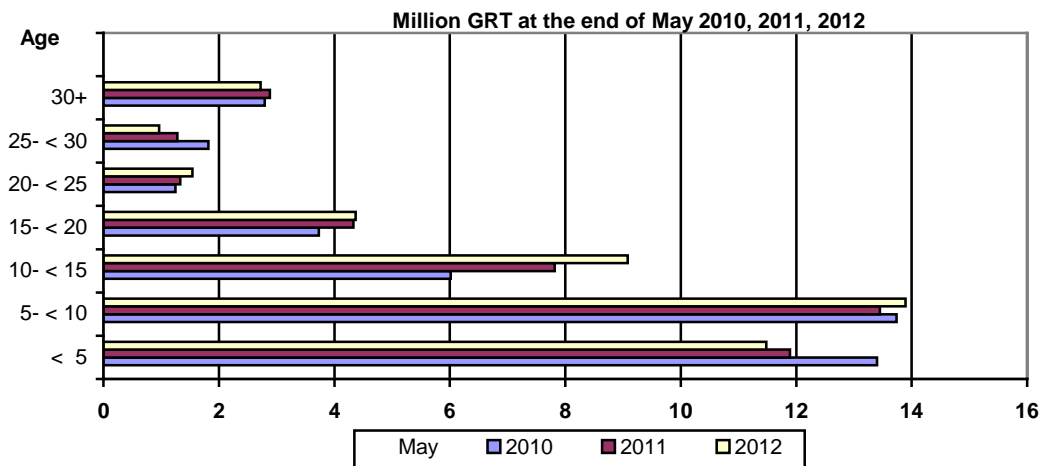
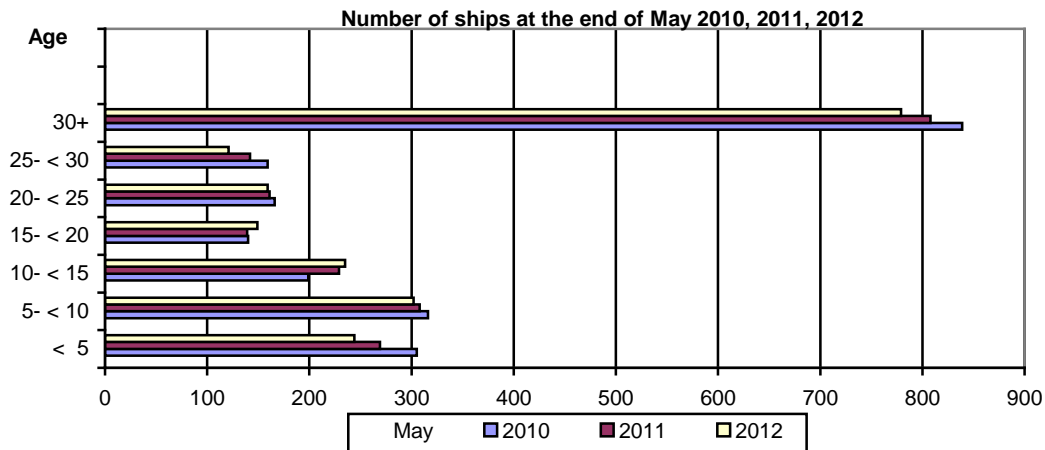
GREEK MERCHANT FLEET: May 2012

(Provisional data)

The Greek Merchant Fleet, for vessels of 100 GRT and over, decreased by 3.3% in May 2012 compared with May 2011. The Greek Merchant Fleet recorded a decline of 3.2% in May 2011 compared with May 2010 (Table 1).

The gross tonnage of the Greek Merchant Fleet, for vessels of 100 GRT and over, increased by 2.5% in May 2012 compared with May 2011, while in May 2011 compared with May 2010 it was up by 0.5% (Table 1).

Chart 1. Distribution of the Greek merchant ships of 100 GRT and over, by age groups.



Information:
Division of Statistics on Trade and Services
Section Maritime Transport Statistics
Vassilios Goulas
Tel : 213 135 2187
Fax: 213 135 3059
email : vasgoy1@statistics.gr

Table 1. Greek Merchant Fleet of 100 GRT and over : May 2010, 2011, 2012

Type of ships	May									
	2010		2011		2012		Change%			
	Number of ships	Tonnage (GRT)	Number of ships	Tonnage (GRT)	Number of ships	Tonnage (GRT)	2011/2010		2012/2011	
							Number of ships	Tonnage (GRT)	Number of ships	Tonnage (GRT)
Total	2.124	42.752.301	2.056	42.978.528	1.989	44.052.891	-3,2	0,5	-3,3	2,5
Cargo	596	15.307.841	570	15.919.127	541	16.021.205	-4,4	4,0	-5,1	0,6
Tankers	560	25.762.391	543	25.441.175	538	26.482.845	-3,0	-1,2	-0,9	4,1
Passenger ships	733	1.618.362	711	1.554.390	679	1.483.310	-3,0	-4,0	-4,5	-4,6
Other	235	63.707	232	63.836	231	65.531	-1,3	0,2	-0,4	2,7

**Table 2. Distribution of the Greek Merchant ships of 100 GRT and over by tonnage groups:
May 2010, 2011, 2012.**

Tonnage groups	May					
	2010		2011		2012	
	Number of ships	Tonnage (GRT)	Number of ships	Tonnage (GRT)	Number of ships	Tonnage (GRT)
Total	2.124	42.752.301	2.056	42.978.528	1.989	44.052.891
100 -< 500	880	221.282	848	213.826	806	203.633
500- < 3.000	414	513.645	387	479.952	364	455.396
3.000 -< 7.000	72	330.678	78	350.937	78	350.844
7.000- < 10.000	30	253.257	30	253.257	28	236.565
10.000- < 20.000	69	1.041.654	60	907.222	54	812.271
20.000 -< 30.000	115	3.013.596	97	2.548.378	88	2.339.013
30.000 +	544	37.378.189	556	38.224.956	571	39.655.169

**Table3. Distribution of the Greek Merchant ships of 100 GRT and over, by age groups :
May 2010, 2011, 2012**

Age groups	May					
	2010		2011		2012	
	Number of ships	Tonnage (GRT)	Number of ships	Tonnage (GRT)	Number of ships	Tonnage (GRT)
Total	2.124	42.752.301	2.056	42.978.528	1.989	44.052.891
< 5	305	13.402.043	269	11.891.995	244	11.479.648
5- < 10	316	13.739.292	308	13.448.177	302	13.894.010
10- < 15	199	6.014.260	229	7.817.632	235	9.080.343
15- < 20	140	3.733.528	139	4.329.910	149	4.369.902
20- < 25	166	1.249.433	161	1.331.393	159	1.540.558
25- < 30	159	1.820.697	142	1.278.832	121	966.076
30+	839	2.793.048	808	2.880.589	779	2.722.354

METHODOLOGICAL NOTES

- Greek Merchant Fleet Survey** The Survey on the Greek Merchant Fleet has been producing results since 1964. It has been conducted on a monthly basis without any major methodological changes ever since. The purpose of the survey is to fully record statistical data on the number and basic characteristics of the Greek merchant ships, thus depicting the evolution over the course of time of the Greek merchant fleet.
- Legal Framework** The survey is conducted in compliance with the joint Ministerial Decision (No 6792/G-81/11-4-97) signed by the Minister of National Economy and the Minister of Mercantile Marine.
- Reference Period** The results of the survey refer to the end of May 2012.
- Coverage** The survey covers all domestic Port Authorities, as well as Greek Consular Port Authorities abroad, which keep ship registers. These Authorities have to send a report on a monthly basis to the Hellenic Statistical Authority (ELSTAT) pertaining to the changes in the Greek merchant ships registered in their ship registers.
- Definitions**
- Merchant ship:** Seagoing self-propelled vessel, at least of 10 GRT, designed for the carriage of goods, transport of passengers, for fishing, towing or specially fitted out for other commercial maritime activities.
- Greek merchant fleet:** The total number of the merchant ships registered in Greece, which belong to natural or legal persons residing on the Greek territory. The Greek flag carried by these ships means that all their maritime activities (subsidies for ship building, cargo limitations and other tax provisions) are governed by commercial and economic rules which are laid down by the respective Greek authorities.
- Gross Register Tonnage (GRT):** unit of measurement of the total volume in cubic feet of the spaces within the hull and of the enclosed spaces above the deck which are available for carrying goods, food, passengers and crew. It equals to the volume of 100 cubic feet or 2.83 m³.
- Net Register Tonnage (NRT):** unit of measurement derived from the gross tonnage by deducting allowances in respect of spaces used for the crew, navigating and propelling machinery, fuel and water ballasts, and other spaces not used for passengers or cargo.
- Age of ship:** indicated by the year of original construction of the hull or that of the hull containing the engine room.
- Methodology** .
It is an exhaustive survey conducted by all domestic Port Authorities and Greek Consular Port Authorities abroad, which report to ELSTAT, on a monthly basis, on changes in the ships pertaining to: a) new registrations of ships in the ship registers, b) change in the name of a ship, c) change of ownership, d) transfers to or from a different port, e) deletion of a ship from a ship register, f) final measurement – remeasurement of ships, g) replacement of the ship's engine.
All these data, after being fully processed, are used to update, through a specially designed software application, the Official Register of Greek Merchant Ships. This Register is used for the production of monthly and annual statistical results.
- References** Further information (tables, charts) concerning the Survey on the Greek Merchant Fleet can be found on the webpage of ELSTAT (www.statistics.gr), under the link: - *Statistical Themes - Transport- Maritime transport – Greek Merchant Fleet of 10 GRT and over.*