



HELLENIC REPUBLIC



MINISTRY OF ECONOMY AND FINANCE



**General Secretariat of the National  
Statistics Services of Greece**

Piraeus, 16 July 2009

## PRESS RELEASE

### Greek merchant fleet of 100 GRT and over, during May 2009

The National Statistics Service of Greece, announces the results of the research, concerning the Greek merchant ships of 100 G.R.T and over, during **May 2009**.

All ships of 100 G.R.T and over included in this research, designed specifically and mainly for the carriage of goods and transport passengers are registered in Greece and also owned by persons (natural or legal) resident in Greece.

According to the research, the Greek merchant fleet during **May 2009** comes to **2.106** with the tonnage of **40.666.222** G.R.T (see fig. 1).

From these vessels **620** are dry cargo ships with a maximum tonnage of **15.013.242** G.R.T, **547** tankers with a maximum tonnage **23.985.371** G.R.T and **939** passenger ships and others with maximum tonnage **1.667.609** G.R.T(fig. 1).

Between December 2000 and May 2009-see figure1-there was:

- An increase in the overall of the Greek merchant fleet by 7,1%
- An overall tonnage increase of the Greek merchant fleet by 48,8%
- A decrease in cargo ships by 0,8%
- An increase in tonnage in cargo ships by 26,3%
- An increase in tankers by 19,7%
- An overall increase in tonnage of tankers by 70,2%
- An increase in passenger ships and others by 6,1%
- An overall increase in tonnage of passenger ships and others by 23,9%

The illustrations below analytically present the Greek merchant fleet:

Figure 1 presents the evolution of Greek merchant fleet from December 2000 until May 2009. Figure 2, 2a, 2b, 2c present data of the Greek merchant fleet, for ships of 100 G.R.T and over for the month of May 2003,2006,2009, according to overall tonnage groups of the total fleet in comparison to the type of vessel.

Figures 3,3a,3b,3c present data about the Greek merchant fleet, for ships of 100 G.R.T and over, for the month of May 2003,2006,2009, by ages groups and categories.

---

**Contact person: Vasilios Goulas**

**Tel. : 0030 210 4852187, Fax : 0030 210 4853059, e-mail : georgakf@statistics.gr**

Table1. Greek merchant ships of 100 GRT and over, by categories: year 2000-2008 and January-May 2009

End of period*	Total			Dry cargo ships			Tankers			Passenger ships and others(1)		
	No	Tonnage		No	Tonnage		No	Tonnage		No	Tonnage	
		GRT	Index 2000=100,0		GRT	Index 2000=100,0		GRT	Index 2000=100,0		GRT	Index 2000=100,0
2000	<b>1.967</b>	<b>27.328.446</b>	<b>100,0</b>	625	11.886.223	<b>100,0</b>	457	14.096.351	<b>100,0</b>	885	1.345.872	<b>100,0</b>
2001	<b>2.051</b>	<b>30.775.357</b>	112,6	653	12.681.400	106,7	470	16.171.423	114,7	928	1.922.534	142,8
2002	<b>2.062</b>	<b>30.821.300</b>	112,8	643	12.720.787	107,0	477	16.113.294	114,3	942	1.987.219	147,7
2003	<b>2.091</b>	<b>33.408.935</b>	122,2	653	14.004.731	117,8	486	17.503.460	124,2	952	1.900.744	141,2
2004	<b>2.094</b>	<b>34.332.481</b>	125,6	661	14.630.180	123,1	474	17.934.542	127,2	959	1.767.759	131,3
2005	<b>2.041</b>	<b>33.128.930</b>	121,2	631	14.106.511	118,7	465	17.248.594	122,4	945	1.773.825	131,8
2006	<b>2.006</b>	<b>35.098.603</b>	128,4	626	15.078.971	126,9	465	18.381.517	130,4	915	1.638.115	121,7
2007	<b>2.049</b>	<b>37.722.228</b>	138,0	627	14.554.064	122,4	505	21.489.262	152,4	917	1.678.902	124,7
2008	<b>2.082</b>	<b>39.156.211</b>	143,3	626	15.078.971	126,9	521	22.318.727	158,3	935	1.758.513	130,7
2009: I	<b>2.090</b>	<b>39.600.631</b>	144,9	626	15.058.049	126,7	525	22.782.654	161,6	939	1.759.928	130,8
II	<b>2.086</b>	<b>39.554.679</b>	144,7	622	14.903.657	125,4	528	22.906.121	162,5	936	1.744.901	129,6
III	<b>2.005</b>	<b>35.117.378</b>	128,5	626	14.789.969	124,4	468	18.699.638	132,7	911	1.627.771	120,9
IV	<b>2.081</b>	<b>31.960.256</b>	116,9	644	12.857.407	108,2	496	17.123.942	121,5	941	1.978.907	147,0
V	<b>2.106</b>	<b>40.666.222</b>	<b>148,8</b>	<b>620</b>	<b>15.013.242</b>	<b>126,3</b>	<b>547</b>	<b>23.985.371</b>	<b>170,2</b>	<b>939</b>	<b>1.667.609</b>	<b>123,9</b>

**Note:** Including also ships supplied with provisional registration papers.

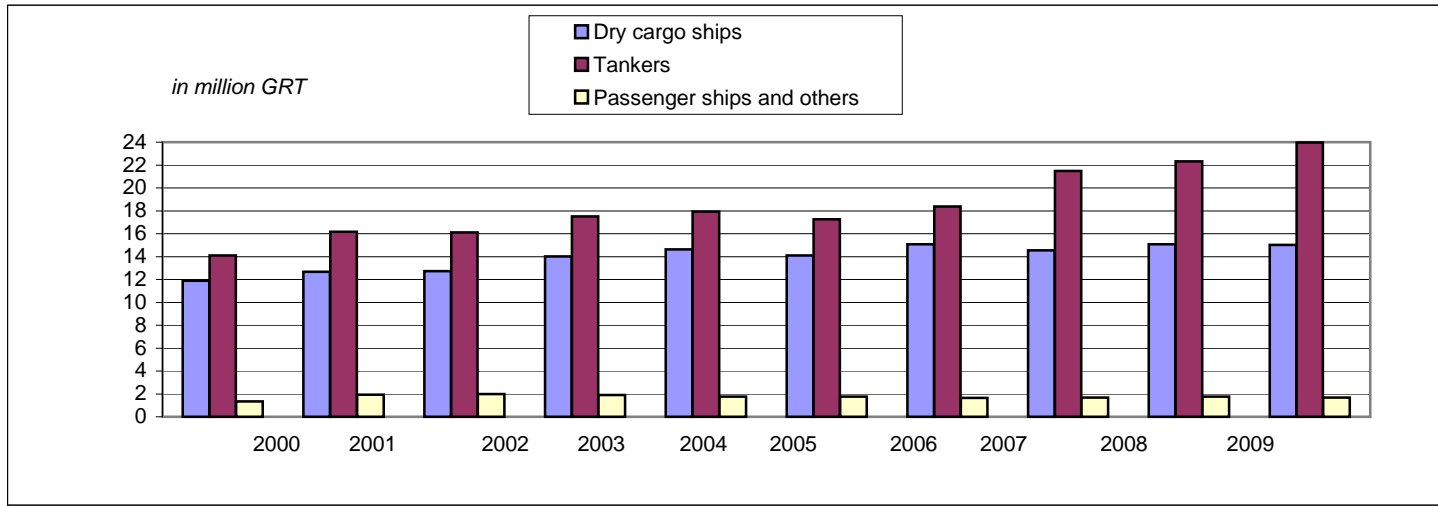
(1) towage, salvage, cable ships, fishing- boats e.t.c .

GRT=Groos registered tons

\* End of period is considered 31st December

**Chart 1. Development of tonnage of the greek merchant fleet by categories: 2000 - 2008 & May 2009**

(Element table 1)



GRT= Gross registered tons.

Table 2. Distribution of Greek merchant ships of 100 GRT and over, by tonnage groups: May of years 2003,2006,2009.

Tonnage groups	Total											
	May 2003				May 2006				May 2009			
	No	GRT	Percent distribution		No	GRT	Percent distribution		No	GRT	Percent distribution	
			No	GRT			No	GRT			No	GRT
<b>Total</b>	<b>2.096</b>	<b>32.879.703</b>	<b>100</b>	<b>100</b>	<b>2.064</b>	<b>34.079.001</b>	<b>100</b>	<b>100</b>	<b>2.106</b>	<b>40.666.222</b>	<b>100</b>	<b>100</b>
<b>100 - 500</b>	<b>849</b>	<b>220.510</b>	<b>40,5</b>	<b>0,7</b>	<b>874</b>	<b>226.225</b>	<b>42,3</b>	<b>0,7</b>	<b>870</b>	<b>220.692</b>	<b>41,3</b>	<b>0,5</b>
100 < 300	575	98.692	27,4	0,3	596	102.233	28,9	0,3	609	105.280	28,9	0,3
300 < 500	274	121.818	13,1	0,4	278	123.992	13,5	0,4	261	115.412	12,4	0,3
<b>500 - 3000</b>	<b>412</b>	<b>480.340</b>	<b>19,7</b>	<b>1,5</b>	<b>407</b>	<b>483.700</b>	<b>19,7</b>	<b>1,4</b>	<b>413</b>	<b>510.042</b>	<b>19,6</b>	<b>1,3</b>
500 < 1.000	252	192.944	12,0	0,6	244	194.153	11,8	0,6	241	198.462	11,4	0,5
1.000 < 2.000	106	153.593	5,1	0,5	111	164.148	5,4	0,5	112	166.334	5,3	0,4
2.000 < 3.000	54	133.803	2,6	0,4	52	125.399	2,5	0,4	60	145.246	2,8	0,4
<b>3000 - 7000</b>	<b>82</b>	<b>383.243</b>	<b>3,9</b>	<b>1,2</b>	<b>85</b>	<b>397.193</b>	<b>4,1</b>	<b>1,2</b>	<b>74</b>	<b>340.096</b>	<b>3,5</b>	<b>0,8</b>
3.000 < 4.000	29	99.836	1,4	0,3	29	101.517	1,4	0,3	29	102.709	1,4	0,3
4.000 < 5.000	20	90.058	1,0	0,3	22	98.247	1,1	0,3	21	94.764	1,0	0,2
5.000 < 6.000	21	114.347	1,0	0,3	23	125.981	1,1	0,4	14	77.320	0,7	0,2
6.000 < 7.000	12	79.002	0,6	0,2	11	71.448	0,5	0,2	10	65.303	0,5	0,2
<b>7000 - 10000</b>	<b>43</b>	<b>357.378</b>	<b>2,1</b>	<b>1,1</b>	<b>36</b>	<b>298.835</b>	<b>1,7</b>	<b>0,9</b>	<b>35</b>	<b>291.246</b>	<b>1,7</b>	<b>0,7</b>
7.000 < 8.000	19	142.369	0,9	0,4	15	111.100	0,7	0,3	15	112.975	0,7	0,3
8.000 < 10.000	24	215.009	1,1	0,7	21	187.735	1,0	0,6	20	178.271	0,9	0,4
<b>10000 - 20000</b>	<b>130</b>	<b>2.001.003</b>	<b>6,2</b>	<b>6,1</b>	<b>93</b>	<b>1.400.708</b>	<b>4,5</b>	<b>4,1</b>	<b>79</b>	<b>1.181.348</b>	<b>3,8</b>	<b>2,9</b>
10.000 < 15.000	55	707.575	2,6	2,2	44	556.319	2,1	1,6	38	469.419	1,8	1,2
15.000 < 20.000	75	1.293.428	3,6	3,9	49	844.389	2,4	2,5	41	711.929	1,9	1,8
<b>20000 - 30000</b>	<b>168</b>	<b>4.269.214</b>	<b>8,0</b>	<b>13,0</b>	<b>123</b>	<b>3.200.790</b>	<b>6,0</b>	<b>9,4</b>	<b>126</b>	<b>3.296.307</b>	<b>6,0</b>	<b>8,1</b>
20.000 < 25.000	79	1.802.022	3,8	5,5	42	945.043	2,0	2,8	44	1.005.251	2,1	2,5
25.000 < 30.000	89	2.467.192	4,2	7,5	81	2.255.747	3,9	6,6	82	2.291.056	3,9	5,6
<b>30000+</b>	<b>412</b>	<b>25.168.015</b>	<b>19,7</b>	<b>76,5</b>	<b>446</b>	<b>28.071.550</b>	<b>21,6</b>	<b>82,4</b>	<b>509</b>	<b>34.826.491</b>	<b>24,2</b>	<b>85,6</b>

GRT=gross registered tons.

**Chart 1. Distribution of Greek merchant ships and over, by tonnage**

(Element table 2)

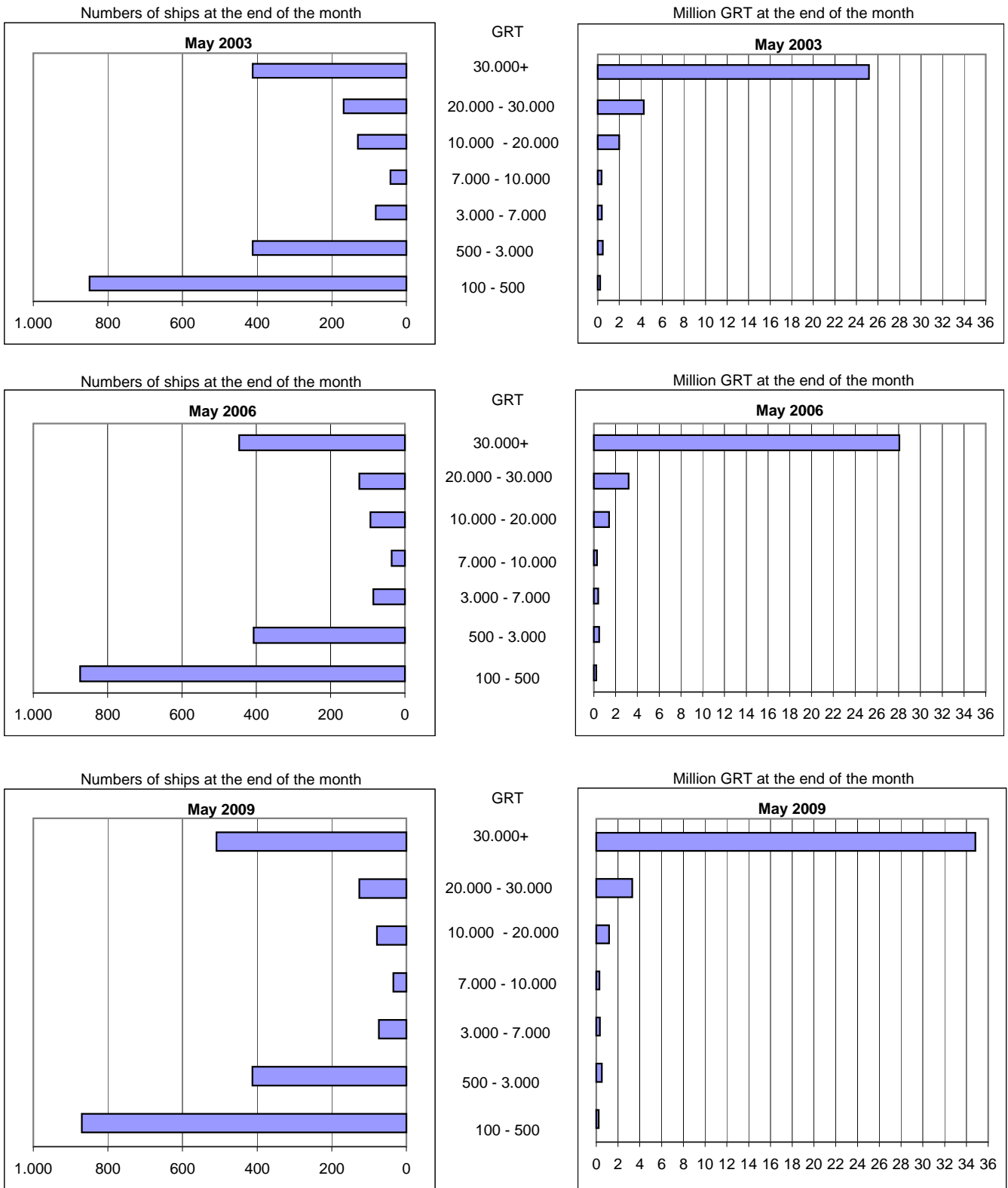


Table 2a. Distribution of Greek dry cargo ships of 100 GRT and over, by tonnage groups: May 2003, 2006, 2009.

Tonnage groups	Dry cargo ships											
	May 2003				May 2006				May 2009			
	No	GRT	Percent distribution		No	GRT	Percent distribution		No	GRT	Percent distribution	
			No	GRT			No	GRT			No	GRT
<b>Total</b>	<b>657</b>	<b>13.525.084</b>	<b>100</b>	<b>100</b>	<b>652</b>	<b>14.638.189</b>	<b>100</b>	<b>100</b>	<b>620</b>	<b>15.013.242</b>	<b>100</b>	<b>100</b>
100 - < 300	36	6.808	5,5	0,1	43	8.163	6,6	0,1	44	8.337	7,1	0,1
300 < 500	72	33.946	11,0	0,3	78	36.663	12,0	0,3	69	32.001	11,1	0,2
500 < 1.000	50	39.083	7,6	0,3	55	43.098	8,4	0,3	61	48.996	9,8	0,3
1.000 < 2.000	39	56.338	5,9	0,4	43	61.787	6,6	0,4	42	59.313	6,8	0,4
2.000 < 3.000	25	64.240	3,8	0,5	16	40.246	2,5	0,3	13	31.275	2,1	0,2
3.000 < 4.000	14	47.774	2,1	0,4	14	47.415	2,1	0,3	14	48.254	2,3	0,3
4.000 < 5.000	6	25.101	0,9	0,2	6	25.234	0,9	0,2	8	35.376	1,3	0,2
5.000 < 6.000	6	33.541	0,9	0,2	8	45.101	1,2	0,3	3	17.481	0,5	0,1
6.000 < 7.000	5	32.660	0,8	0,2	5	32.660	0,8	0,2	5	33.489	0,8	0,2
7.000 < 8.000	4	29.042	0,6	0,2	5	36.437	0,8	0,2	3	21.871	0,5	0,1
8.000 < 10.000	17	150.631	2,6	1,1	14	123.797	2,1	0,8	13	114.914	2,1	0,8
10.000 < 15.000	39	504.668	5,9	3,7	29	368.245	4,4	2,5	23	288.560	3,7	1,9
15.000 < 20.000	51	876.852	7,8	6,5	39	665.939	6,0	4,5	28	483.797	4,5	3,2
20.000 < 25.000	54	1.214.972	8,2	9,0	31	690.730	4,8	4,7	24	540.135	3,9	3,6
25.000 < 30.000	32	877.750	4,9	6,5	36	994.449	5,5	6,8	42	1.165.556	6,8	7,8
30.000+	207	9.531.678	31,5	70,5	230	11.418.225	35,3	78,0	228	12.083.887	36,8	80,5

GRT= gross registered tons.

Table 2b. Distribution of Greek tankers of 100 GRT and over, by tonnage groups: May 2003, 2006, 2009.

Tonnage groups	Tankers											
	May 2003				May 2006				May 2009			
	No	GRT	Percent distribution		No	GRT	Percent distribution		No	GRT	Percent distribution	
			No	GRT			No	GRT			No	GRT
<b>Total</b>	<b>495</b>	<b>17.391.323</b>	<b>100</b>	<b>100</b>	<b>468</b>	<b>17.730.633</b>	<b>100</b>	<b>100</b>	<b>547</b>	<b>23.985.371</b>	<b>100</b>	<b>100</b>
100 - < 300	31	6.125	6,3	0,0	29	5.919	6,2	0,0	22	4.368	4,0	0,0
300 < 500	62	28.140	12,5	0,2	59	26.893	12,6	0,2	58	26.397	10,6	0,1
500 < 1.000	74	62.034	14,9	0,4	69	59.512	14,7	0,3	70	61.516	12,8	0,3
1.000 < 2.000	34	49.057	6,9	0,3	33	48.962	7,1	0,3	41	63.044	7,5	0,3
2.000 < 3.000	12	27.321	2,4	0,2	16	35.905	3,4	0,2	26	62.657	4,8	0,3
3.000 < 4.000	0	0	0,0	0,0	1	3.997	0,2	0,0	2	7.811	0,4	0,0
4.000 < 5.000	1	4.520	0,2	0,0	1	4.242	0,2	0,0	0	0	0,0	0,0
5.000 < 6.000	1	5.284	0,2	0,0	1	5.284	0,2	0,0	1	5.284	0,2	0,0
6.000 < 7.000	2	13.214	0,4	0,1	1	6.764	0,2	0,0	1	6.764	0,2	0,0
7.000 < 8.000	2	15.114	0,4	0,1	1	7.864	0,2	0,0	2	15.817	0,4	0,1
8.000 < 10.000	1	8.228	0,2	0,0	1	9.094	0,2	0,1	1	9.094	0,2	0,0
10.000 < 15.000	8	105.091	1,6	0,6	7	88.633	1,5	0,5	3	37.680	0,5	0,2
15.000 < 20.000	14	239.574	2,8	1,4	2	35.195	0,4	0,2	2	35.195	0,4	0,1
20.000 < 25.000	19	443.115	3,8	2,5	10	231.901	2,1	1,3	16	371.497	2,9	1,5
25.000 < 30.000	48	1.335.751	9,7	7,7	35	976.827	7,5	5,5	30	846.482	5,5	3,5
30.000+	186	15.048.755	37,6	86,5	202	16.183.641	43,2	91,3	272	22.431.765	49,7	93,5

GRT=gross registered tons

Table 2c. Distribution of Greek passenger ships and others of 100 GRT and over, by tonnage groups: May 2003,2006,2009.

Tonnage groups	Passenger ships and others											
	May 2003				May 2006				May 2009			
	No	GRT	Percent distribution		No	GRT	Percent distribution		No	GRT	Percent distribution	
			No	GRT			No	GRT			No	GRT
<b>Total</b>	<b>944</b>	<b>1.963.296</b>	<b>100</b>	<b>100</b>	<b>944</b>	<b>1.710.179</b>	<b>100</b>	<b>100</b>	<b>939</b>	<b>1.667.609</b>	<b>100</b>	<b>100</b>
100 - < 300	508	85.759	53,8	4,4	524	88.151	55,5	5,2	543	92.575	57,8	5,6
300 < 500	140	59.732	14,8	3,0	141	60.436	14,9	3,5	134	57.014	14,3	3,4
500 < 1.000	128	91.827	13,6	4,7	120	91.543	12,7	5,4	110	87.950	11,7	5,3
1.000 < 2.000	33	48.198	3,5	2,5	35	53.399	3,7	3,1	29	43.977	3,1	2,6
2.000 < 3.000	17	42.242	1,8	2,2	20	49.248	2,1	2,9	21	51.314	2,2	3,1
3.000 < 4.000	15	52.062	1,6	2,7	14	50.105	1,5	2,9	13	46.644	1,4	2,8
4.000 < 5.000	13	60.437	1,4	3,1	15	68.771	1,6	4,0	13	59.388	1,4	3,6
5.000 < 6.000	14	75.522	1,5	3,8	14	75.596	1,5	4,4	10	54.555	1,1	3,3
6.000 < 7.000	5	33.128	0,5	1,7	5	32.024	0,5	1,9	4	25.050	0,4	1,5
7.000 < 8.000	13	98.213	1,4	5,0	9	66.799	1,0	3,9	10	75.287	1,1	4,5
8.000 < 10.000	6	56.150	0,6	2,9	6	54.844	0,6	3,2	6	54.263	0,6	3,3
10.000 < 15.000	8	97.816	0,8	5,0	8	99.441	0,8	5,8	12	143.179	1,3	8,6
15.000 < 20.000	10	177.002	1,1	9,0	8	143.255	0,8	8,4	11	192.937	1,2	11,6
20.000 < 25.000	6	143.935	0,6	7,3	1	22.412	0,1	1,3	4	93.619	0,4	5,6
25.000 < 30.000	9	253.691	1,0	12,9	10	284.471	1,1	16,6	10	279.018	1,1	16,7
30.000+	19	587.582	2,0	29,9	14	469.684	1,5	27,5	9	310.839	1,0	18,6

GRT=gross registered tons



Table 3. Age distribution of Greek merchant ships of 100 GRT and over : May 2003, 2006, 2009.

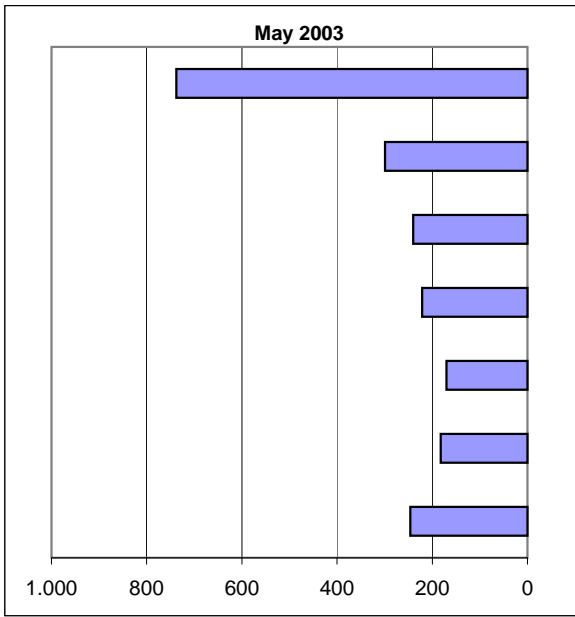
Age groups	Total											
	May 2003				May 2006				May 2009			
	No	GRT	Percent distribution		No	GRT	Percent distribution		No	GRT	Percent distribution	
			No	GRT			No	GRT			No	GRT
<b>Total</b>	<b>2.096</b>	<b>32.879.703</b>	<b>100</b>	<b>100</b>	<b>2.064</b>	<b>34.079.001</b>	<b>100</b>	<b>100</b>	<b>2.106</b>	<b>40.666.222</b>	<b>100</b>	<b>100</b>
- < 5	246	10.750.545	11,7	32,7	280	11.435.322	13,6	33,6	266	11.645.399	12,6	28,6
5- < 10	182	5.863.309	8,7	17,8	234	8.489.354	11,3	24,9	337	14.111.395	16,0	34,7
10- < 15	170	4.416.571	8,1	13,4	164	5.383.536	7,9	15,8	180	5.215.433	8,5	12,8
15- < 20	221	4.040.680	10,5	12,3	163	2.269.603	7,9	6,7	141	3.385.202	6,7	8,3
20- < 25	240	3.572.490	11,5	10,9	192	2.458.629	9,3	7,2	176	1.759.513	8,4	4,3
25- < 30	299	2.625.975	14,3	8,0	242	2.025.612	11,7	5,9	186	1.961.388	8,8	4,8
30+	738	1.610.133	35,2	4,9	789	2.016.945	38,2	5,9	820	2.587.892	38,9	6,4

GRT=gross registered tons

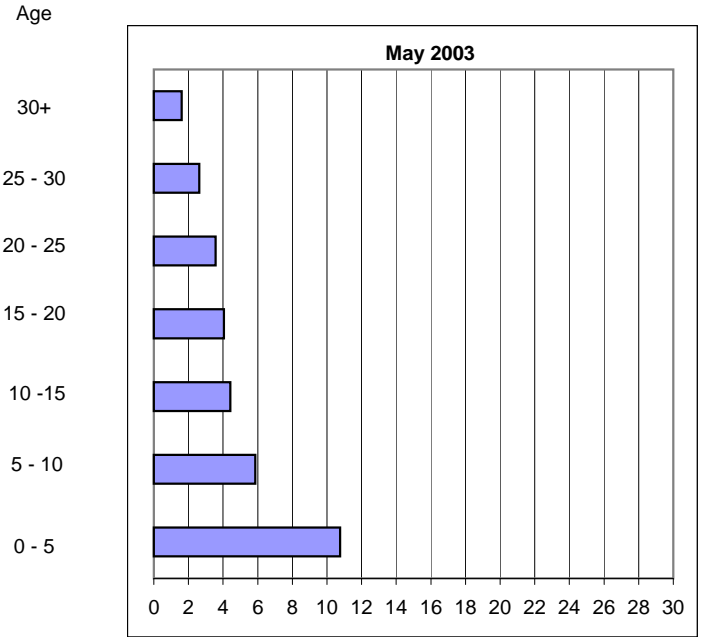
**Chart 3. Age distribution of Greek merchant ships of 100 GRT and over**

(elemnet table 3)

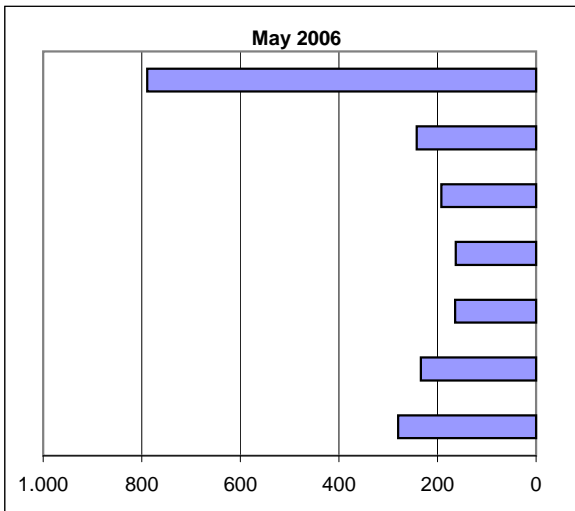
Numbers of ships at the end of the month



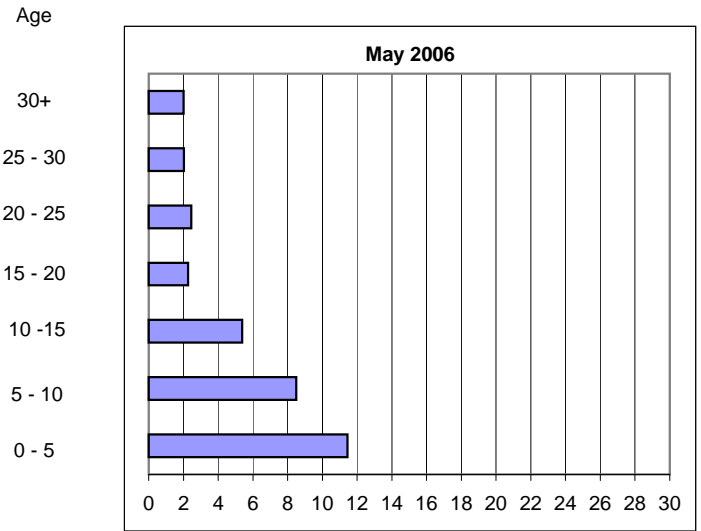
Million GRT at the the end of the month



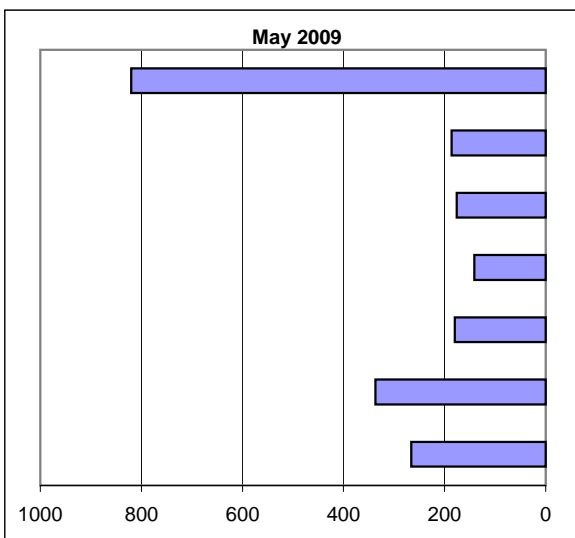
Numbers of ships at the end of the month



Million GRT at the the end of the month



Numbers of ships at the end of the month



Million GRT at the the end of the month

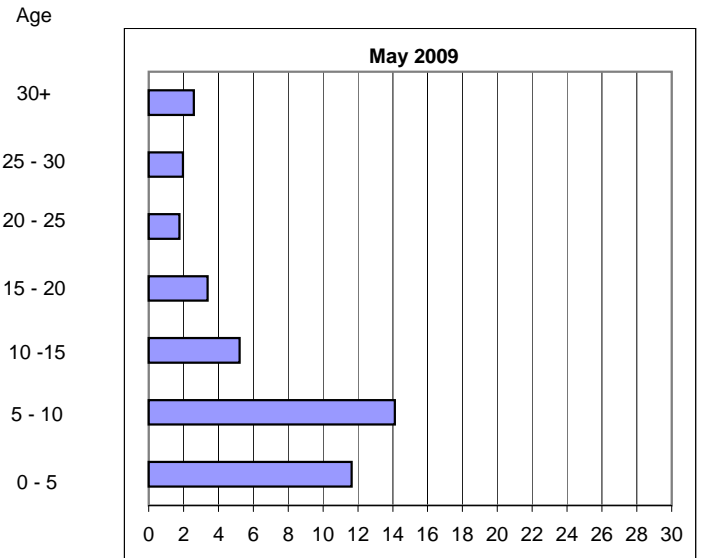




Table 3a. Age distribution of Greek dry cargo ships of 100 GRT and over: May 2003, 2006, 2009.

Age groups	Dry cargo ships											
	May 2003				May 2006				May 2009			
	No	GRT	Percent distribution		No	GRT	Percent distribution		No	GRT	Percent distribution	
			No	GRT			No	GRT			No	GRT
<b>Total</b>	<b>657</b>	<b>13.525.084</b>	<b>100</b>	<b>100</b>	<b>652</b>	<b>14.638.189</b>	<b>100</b>	<b>100</b>	<b>620</b>	<b>15.013.242</b>	<b>100</b>	<b>100</b>
- < 5	71	3.344.579	10,8	24,7	76	3.632.322	11,7	24,8	52	2.975.840	8,4	19,8
5- < 10	48	2.299.351	7,3	17,0	74	3.404.443	11,3	23,3	109	5.006.142	17,6	33,3
10- < 15	34	1.241.176	5,2	9,2	48	2.269.887	7,4	15,5	45	2.215.494	7,3	14,8
15- < 20	92	2.484.325	14,0	18,4	34	890.096	5,2	6,1	22	786.753	3,5	5,2
20- < 25	101	2.264.998	15,4	16,7	85	1.976.762	13,0	13,5	42	1.057.023	6,8	7,0
25- < 30	108	1.348.445	16,4	10,0	90	1.480.485	13,8	10,1	82	1.666.984	13,2	11,1
30+	203	542.210	30,9	4,0	245	984.194	37,6	6,7	268	1.305.006	43,2	8,7

GRT= gross registered tons

Table 3b. Age distribution of Greek tankers of 100GRT and over : May 2003, 2006, 2009.

Age groups	Tankers											
	May 2003				May 2006				May 2009			
	No	GRT	Percent distribution		No	GRT	Percent distribution		No	GRT	Percent distribution	
			No	GRT			No	GRT			No	GRT
<b>Total</b>	<b>495</b>	<b>17.391.323</b>	<b>100</b>	<b>100</b>	<b>468</b>	<b>17.730.633</b>	<b>100</b>	<b>100</b>	<b>547</b>	<b>23.985.371</b>	<b>100</b>	<b>100</b>
- < 5	90	6.947.831	18,2	39,9	120	7.683.879	25,6	43,3	132	8.587.641	24,1	35,8
5- < 10	57	3.391.251	11,5	19,5	64	4.523.631	13,7	25,5	116	8.654.013	21,2	36,1
10- < 15	37	2.809.730	7,5	16,2	39	3.019.442	8,3	17,0	49	2.872.641	9,0	12,0
15- < 20	43	1.472.637	8,7	8,5	30	1.266.652	6,4	7,1	35	2.475.699	6,4	10,3
20- < 25	48	1.176.598	9,7	6,8	24	366.881	5,1	2,1	26	591.570	4,8	2,5
25- < 30	45	1.080.463	9,1	6,2	27	392.667	5,8	2,2	23	209.518	4,2	0,9
30+	175	512.813	35,4	2,9	164	477.481	35,0	2,7	166	594.289	30,3	2,5

GRT=gross registered tons

Table 3c. Age distribution of Greek passenger ships and others of 100 GRT and over: May 2003, 2006, 2009.

Age groups	Passenger ships and others											
	May 2003				May 2006				May 2009			
	No	GRT	Percent distribution		No	GRT	Percent distribution		No	GRT	Percent distribution	
			No	GRT			No	GRT			No	GRT
<b>Total</b>	<b>944</b>	<b>1.963.296</b>	<b>100</b>	<b>100</b>	<b>944</b>	<b>1.710.179</b>	<b>100</b>	<b>100</b>	<b>939</b>	<b>1.667.609</b>	<b>100</b>	<b>100</b>
- < 5	85	458.135	9,0	23,3	84	119.121	8,9	7,0	82	81.918	8,7	4,9
5- < 10	77	172.707	8,2	8,8	96	561.280	10,2	32,8	112	451.240	11,9	27,1
10- < 15	99	365.665	10,5	18,6	77	94.207	8,2	5,5	86	127.298	9,2	7,6
15- < 20	86	83.718	9,1	4,3	99	112.855	10,5	6,6	84	122.750	8,9	7,4
20- < 25	91	130.894	9,6	6,7	83	114.986	8,8	6,7	108	110.920	11,5	6,7
25- < 30	146	197.067	15,5	10,0	125	152.460	13,2	8,9	81	84.886	8,6	5,1
30+	360	555.110	38,1	28,3	380	555.270	40,3	32,5	386	688.597	41,1	41,3

GRT=gross registered tons.