



HELLENIC REPUBLIC

MINISTRY OF FINANCE



GENERAL SECRETARIAT  
NATIONAL STATISTICAL SERVICE  
OF GREECE

*Piraeus, 12th of March 2010*

## PRESS RELEASE

Unemployment rate at 10.2 in December 2009

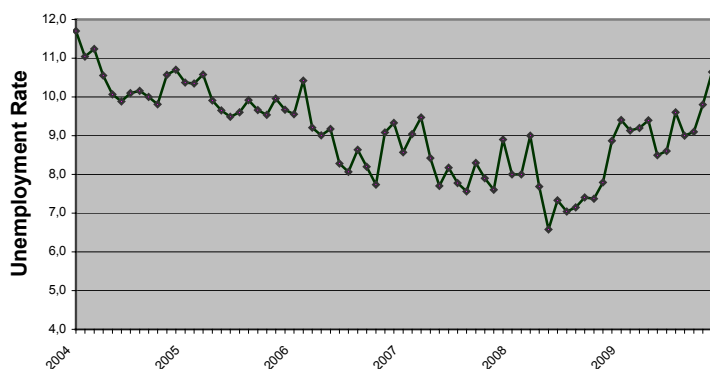
### LABOUR FORCE SURVEY: December 2009

Unemployment rate in December 2009 was 10.2% compared to 8,9% in December 2008 and 10.6% in November 2009. The number of employed amounted to 4,457,657 persons while the number of unemployed amounted to 505,110 and the number of inactive to 4,323,071. The corresponding figures for December 2004, 2005, 2006, 2007, 2008 και 2009 are presented in Table 1.

The number of employed decreased by 5,730 persons compared to December 2008 (a 0.1% rate of decrease) and by 6,573 persons compared to November 2009 (a 0.1% rate of decrease).

Unemployed increased by 70,961 persons (a 16.3% rate of increase) compared to December 2008 and decreased by 26,843 persons compared to November 2009 (a 5.0% rate of decrease).

#### Unemployment rate by month (January 2004 – December 2009)



Tables 2, 3 and 4 present unemployment rate by NUTS II areas, gender and age groups for December 2004, 2005, 2006, 2007, 2008 και 2009.

Contact Person: Stelios Zachariou

Tel: 213 1352173

Fax: 213 1352948

E-mail: [ifs@statistics.gr](mailto:ifs@statistics.gr)

**Table 1. Employed, unemployed, economically non-active and unemployment rate (December 2004 - 2009).**

	December					
	2004	2005	2006	2007	2008	2009
Employed	4,289,389	4,366,570	4,405,648	4,456,981	4,463,387	4,457,657
Unemployed	514,280	467,601	453,340	438,066	434,149	505,110
Inactive	4,283,235	4,291,505	4,325,105	4,322,573	4,350,927	4,323,071
Unemployment rate	10.7	9.7	9.3	8.9	8.9	10.2

**Table 2: Unemployment rate by region: December 2004-2009**

Περιφέρεια	December					
	2004	2005	2006	2007	2008	2009
Anatoliki Makedonia Thraki	11.8	12.3	10.3	12.4	9.3	12.5
Kentriki Makedonia	13.8	11.0	9.4	10.2	8.8	11.4
Dytiki Makedonia	19.7	20.3	18.3	12.9	13.4	12.0
Ipeiros	11.0	12.6	11.6	10.2	12.2	12.1
Thessalia	9.0	10.0	8.7	9.4	9.1	10.4
Ionía Nisia	12.5	10.3	12.8	11.0	10.2	15.0
Dytiki Ellada	11.2	7.6	6.9	10.5	7.8	7.0
Stereá Ellada	9.7	9.9	8.8	8.3	9.0	11.2
Attiki	9.6	8.6	9.6	7.4	8.3	9.2
Peloponnissos	10.5	7.5	5.7	8.6	5.8	8.4
Voreio Aigaio	9.9	9.6	9.5	7.9	6.8	6.9
Notio Aigaio	7.8	8.6	9.3	12.3	11.8	13.6
Criti	7.2	8.2	7.9	6.6	11.2	10.8
<b>Total Country</b>	<b>10.7</b>	<b>9.7</b>	<b>9.3</b>	<b>8.9</b>	<b>8.9</b>	<b>10.2</b>

**Table 3. Unemployment rate by sex: December 2004-2009**

Φύλο	December					
	2004	2005	2006	2007	2008	2009
Male	6.6	6.4	6.0	6.1	6.5	6.9
Female	16.7	14.4	14.1	13.0	12.2	14.8
<b>Total</b>	<b>10.7</b>	<b>9.7</b>	<b>9.3</b>	<b>8.9</b>	<b>8.9</b>	<b>10.2</b>

**Table 4: Unemployment rate by age groups: December 2004-2009**

<b>Age Group</b>	<b>December</b>					
	<b>2004</b>	<b>2005</b>	<b>2006</b>	<b>2007</b>	<b>2008</b>	<b>2009</b>
15-24 years old	28.0	26.7	28.4	24.5	26.3	28.9
25-34 years old	14.1	12.0	12.8	12.7	11.6	13.7
35-44 years old	8.5	8.2	7.3	6.8	6.8	8.9
45-54 years old	5.2	5.8	4.9	5.6	5.7	5.9
55-64 years old	5.3	4.3	3.5	3.0	4.5	4.6
65-74 years old	0.9	2.3	2.1	0.5	0.0	0.5
<b>Total</b>	<b>10.7</b>	<b>9.7</b>	<b>9.3</b>	<b>8.9</b>	<b>8.9</b>	<b>10.2</b>

## EXPLANATORY NOTES

- Labour Force Survey** Labour Force Survey produces early estimates since 1981 (second quarter of the year). Since 1998 is a continuous quarterly survey. The main statistical objectives of Labour Force Survey is to divide the population of working age (15 years and above) into three mutually exclusive and exhaustive groups - persons in employment, unemployed persons and inactive persons. In addition, Labour Force Survey collects information on demographic characteristics, on main job characteristics, on the existence and characteristics of second job, on educational attainment, on participation in education, on previous working experience and on search of job.
- Legislation** Current survey is completely harmonized with European legislation. The principal legal act is the Council Regulation (EC) No. 577/98 that stipulates the provisions on design, survey characteristics and decision making processes. Survey framework was modified in successive Commission regulations. (Regulation (EC) No 1372/2007 , Regulation (EC) No 2257/2003 , Regulation (EC) No 1991/2002).
- Reference Period** December 2009
- Coverage** For the monthly estimates, a sub-sample of the quarterly Labour Force survey's sample was used.
- Definitions** **Employed** are persons aged 15 years or older, who during the reference week had worked, even for just one hour, for pay or profit or they have worked in the family business, or they were not at work but had a job or business from which they were temporarily absent.
- Unemployed** are persons aged 15-74 who were without work during the reference week (they were not classified as employed), were currently available for work and were either actively seeking work in the past four weeks or had already found a job to start within the next three months.
- Inactive** are those persons who neither classified as employed nor as unemployed.
- Economically active population (labour force)** are persons that either employed or unemployed
- Unemployment Rate:** Is the ratio of unemployed divided by total labour force.
- Methodology** Labour Force Survey' s estimates are produced by a suitable unbiased estimator which takes in to account a) the probability of selection of every sampled household, b) response rate in every primary sampling unit, c) the estimated population for December 2009, allocated by NUTS II areas, sex and age group).
- References** Analytical description of Labour Force Survey' s methodology and definitions can be found at [www.statistics.gr](http://www.statistics.gr).