



HELLENIC REPUBLIC



MINISTRY OF ECONOMY AND FINANCE



GENERAL SECRETARIAT
NATIONAL STATISTICAL SERVICE
OF GREECE

Piraeus, 10th of September 2009

PRESS RELEASE

Unemployment rate at 8.6 in June 2009

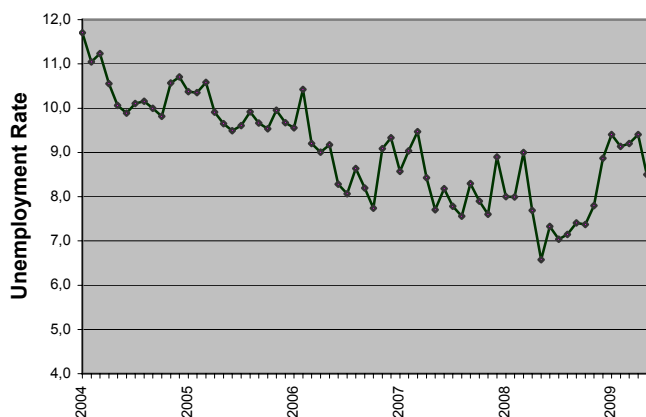
LABOUR FORCE SURVEY: June 2009

Unemployment rate in June 2009 was 8,6% compared to 7,3% in June 2008 and 8.5 in May 2009. The number of employed amounted to 4,572,316 persons while the number of unemployed amounted to 427,707 and the number of inactive to 4,265,619. The corresponding figures for June 2004, 2005, 2006, 2007, 2008 και 2009 are presented in Table 1.

The number of employed increased by 19,484 persons compared to June 2008 (a 0.42% rate of increase) and by 18,318 persons compared to May 2009 (a 0.40% rate of increase).

Unemployed increased by 67,729 persons (a 18.8% rate of increase) and by 7,306 persons compared to May 2009 (a 1.7% rate of increase).

Unemployment rate by month (January 2004 – June 2009)



Tables 2, 3 and 4 present unemployment rate by NUTS II areas, gender and age groups for June 2004, 2005, 2006, 2007, 2008 και 2009.

Contact Person: Stelios Zachariou

Tel: 210 4852173

Fax: 210 4852948

E-mail: zacharis@statistics.gr

Table 1. Employed, unemployed, economically non-active and unemployment rate (June, 2004 - 2009).

	June					
	2004	2005	2006	2007	2008	2009
Employed	4,313,614	4,376,373	4,475,853	4,529,233	4,552,832	4,572,316
Unemployed	473,167	458,686	404,006	403,365	359,978	427,707
Inactive	4,274,393	4,270,968	4,275,027	4,275,649	4,314,792	4,265,619
Unemployment rate	9.9	9.5	8.3	8.2	7.3	8.6

Table 2: Unemployment rate by region: June 2004 – 2009

Περιφέρεια	June					
	2004	2005	2006	2007	2008	2009
Anatoliki Makedonia Thraki	10.1	10.5	11.6	11.4	10.0	11.6
Kentriki Makedonia	12.1	11.9	8.8	9.7	8.3	8.7
Dytiki Makedonia	18.3	20.2	18.2	9.2	7.7	9.8
Ipeiros	10.5	12.0	9.3	9.3	10.2	11.5
Thessalia	9.8	9.4	8.1	8.4	8.0	9.5
Ionia Nisia	4.8	9.1	10.6	8.8	3.9	6.4
Dytiki Ellada	10.7	9.6	8.4	7.4	8.8	10.5
Stereia Ellada	8.1	9.3	7.1	7.6	7.2	8.7
Attiki	9.9	8.4	7.8	7.8	6.8	8.3
Peloponnissos	8.8	8.2	7.1	7.4	6.9	7.7
Voreio Aigaio	8.5	9.0	8.3	9.1	3.8	4.5
Notio Aigaio	4.8	6.0	5.4	5.1	4.4	4.9
Criti	5.5	5.9	5.0	4.6	5.3	5.9
Total Country	9.9	9.5	8.3	8.2	7.3	8.6

Table 3. Unemployment rate by sex: June 2004-2009

Φύλο	June					
	2004	2005	2006	2007	2008	2009
Male	6.0	5.7	5.5	4.9	5.0	5.8
Female	15.6	15.0	12.4	12.9	10.7	12.4
Total	9.9	9.5	8.3	8.2	7.3	8.6

Table 4: Unemployment rate by age groups: June 2004-2009

Age Group	June					
	2004	2005	2006	2007	2008	2009
15-24 years old	27.9	27.1	24.5	21.3	22.3	22.9
25-34 years old	12.2	11.8	10.4	12.1	10.3	11.8
35-44 years old	7.7	7.8	7.2	5.8	5.1	7.1
45-54 years old	4.7	5.3	4.4	4.9	4.4	5.3
55-64 years old	5.0	3.3	3.3	3.4	3.1	3.8
65-74 years old	0.3	2.2	1.0	0.5	0.6	0.7
Total	9.9	9.5	8.3	8.2	7.3	8.6

EXPLANATORY NOTES

- Labour Force Survey** Labour Force Survey produces early estimates since 1981 (second quarter of the year). Since 1998 is a continuous quarterly survey. The main statistical objectives of Labour Force Survey is to divide the population of working age (15 years and above) into three mutually exclusive and exhaustive groups - persons in employment, unemployed persons and inactive persons. In addition, Labour Force Survey collects information on demographic characteristics, on main job characteristics, on the existence and characteristics of second job, on educational attainment, on participation in education, on previous working experience and on search of job.
- Legislation** Current survey is completely harmonized with European legislation. The principal legal act is the [Council Regulation \(EC\) No. 577/98](#) that stipulates the provisions on design, survey characteristics and decision making processes. Survey framework was modified in successive Commission regulations. ([Regulation \(EC\) No 1372/2007](#) , [Regulation \(EC\) No 2257/2003](#) , [Regulation \(EC\) No 1991/2002](#)).
- Reference Period** June 2009
- Coverage** For the monthly estimates, a sub-sample of the quarterly Labour Force survey's sample was used. For June 2009, 22,417 persons, belonging to 9,270 different households, were interviewed in total
- Definitions** **Employed** are persons aged 15 years or older, who during the reference week had worked, even for just one hour, for pay or profit or they have worked in the family business, or they were not at work but had a job or business from which they were temporarily absent.
- Unemployed** are persons aged 15-74 who were without work during the reference week (they were not classified as employed), were currently available for work and were either actively seeking work in the past four weeks or had already found a job to start within the next three months.
- Inactive** are those persons who neither classified as employed nor as unemployed.
- Economically active population (labour force)** are persons that either employed or unemployed
- Unemployment Rate:** Is the ratio of unemployed divided by total labour force.
- Methodology** Labour Force Survey' s estimates are produced by a suitable unbiased estimator which takes in to account a) the probability of selection of every sampled household, b) response rate in every primary sampling unit, c) the estimated population for June 2009, allocated by NUTS II areas, sex and age group).
- References** Analytical description of Labour Force Survey' s methodology and definitions can be found at www.statistics.gr.