

POPULATION PROJECTIONS OF GREECE 2007-2050

SUMMARY NOTE

1. Introduction

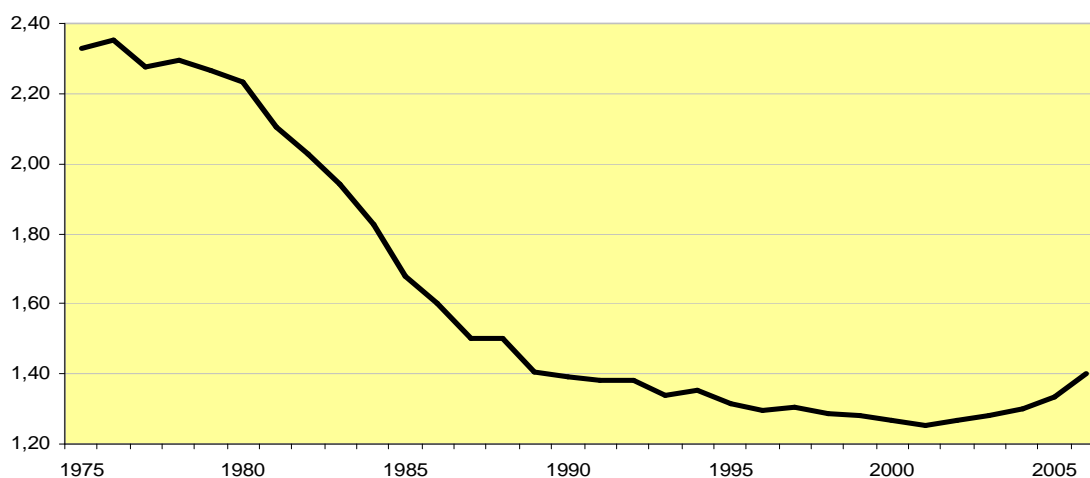
The population projections 2007 – 2050, based on the estimated population of January the 1st, 2007 were plotted in 3 scenarios (low, high, medium) for each one of the three demographic components (fertility, mortality, migration). As regards *fertility*, for low and high scenarios respectively, target values for the year 2050 were set by case and interpolations were consequently made, in order to calculate the interim values. For *mortality* an increase of the life expectancy is foreseen, big for the high and small for the low scenario. *Migration* annual flow data are distributed by sex and age according to the results of the last Population census of 2001 and the administrative data of the Ministry of Interior.

In all cases, the values for the medium (main) scenario are the average of the two above-mentioned scenarios.

2. Fertility

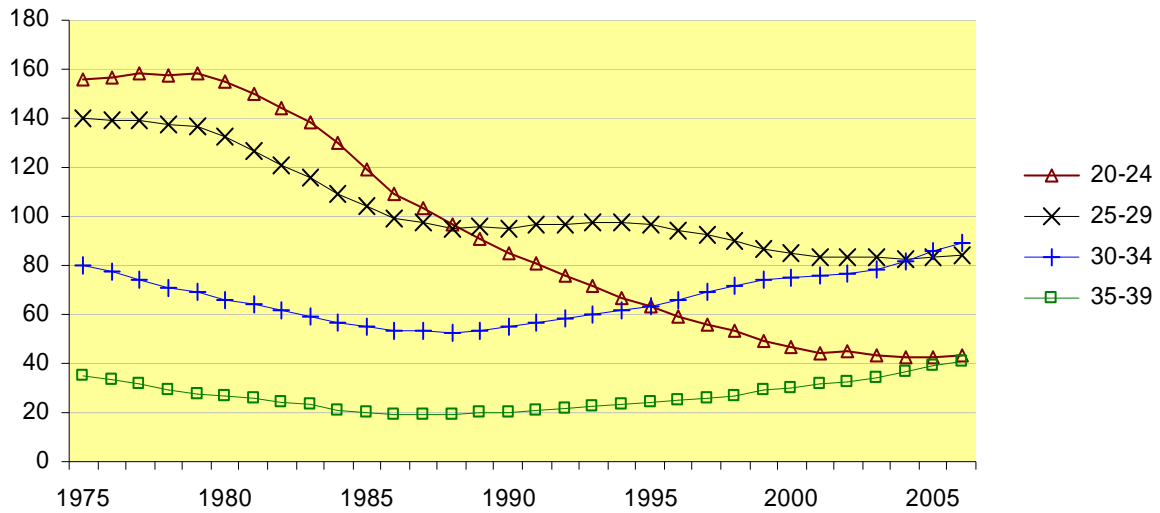
During the 80s and 90s decades, a remarkable decline of the total fertility rate was observed. However, in the last few years an upper trend was recorded.

TOTAL FERTILITY RATE 1975-2006



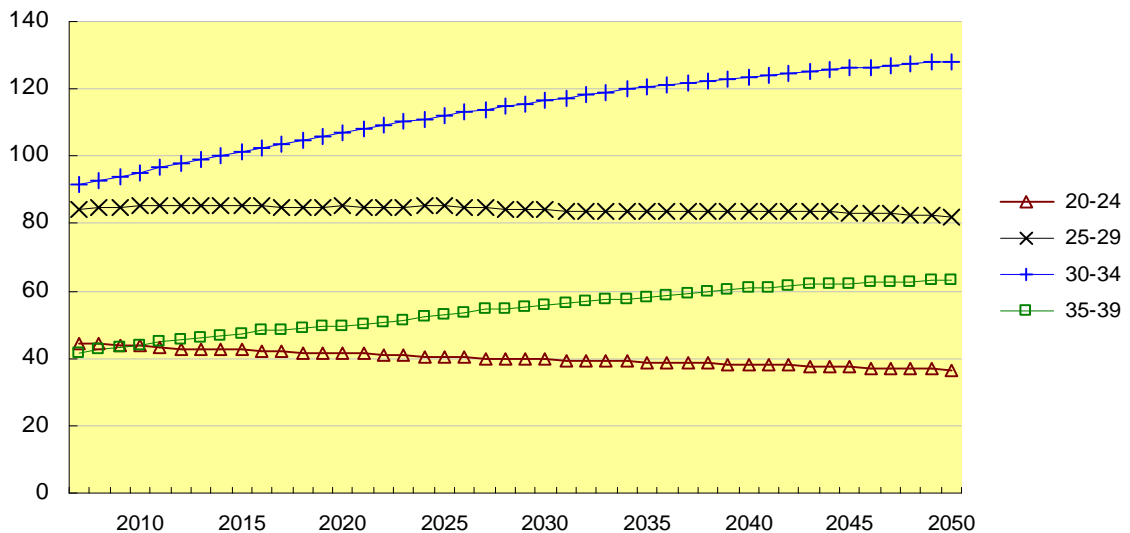
These trends are the result of the social and cultural changes that occurred in the country during the last decades. In the chart below we can see the changes in the specific fertility rates of the main age groups:

**SPECIFIC FERTILITY RATES BY SELECTED AGE GROUPS
1975 - 2006**



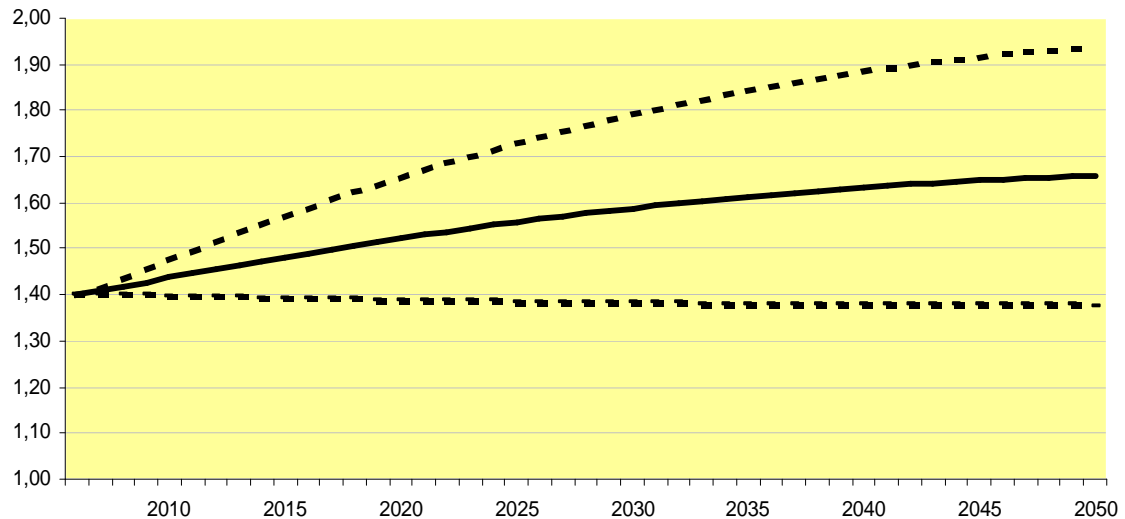
The low scenario foresees a further decrease of the fertility rate concerning the age groups of 20-24 and 25-29 and a small increase concerning the age groups of 30-34 and 35-39. The high scenario foresees a bigger increase concerning the age groups of 30-34 and 35-39, a small increase for the group 25-29 and a small decrease for the group 20-24.

**PROJECTION OF SPECIFIC FERTILITY RATES BY SELECTED
AGE GROUPS 2007 - 2050
(Medium scenario)**



As a consequence of the fertility trend (low-high scenario) the values accruing from the medium scenario are expected to present an increase concerning the age groups 30-34 and 35-39 years respectively, maintenance of fertility in the current levels for the age group 25-29 and a slight decrease for the age group 20-24 years. So, by 2050, the total fertility rate in the medium scenario is expected to reach 1,66.

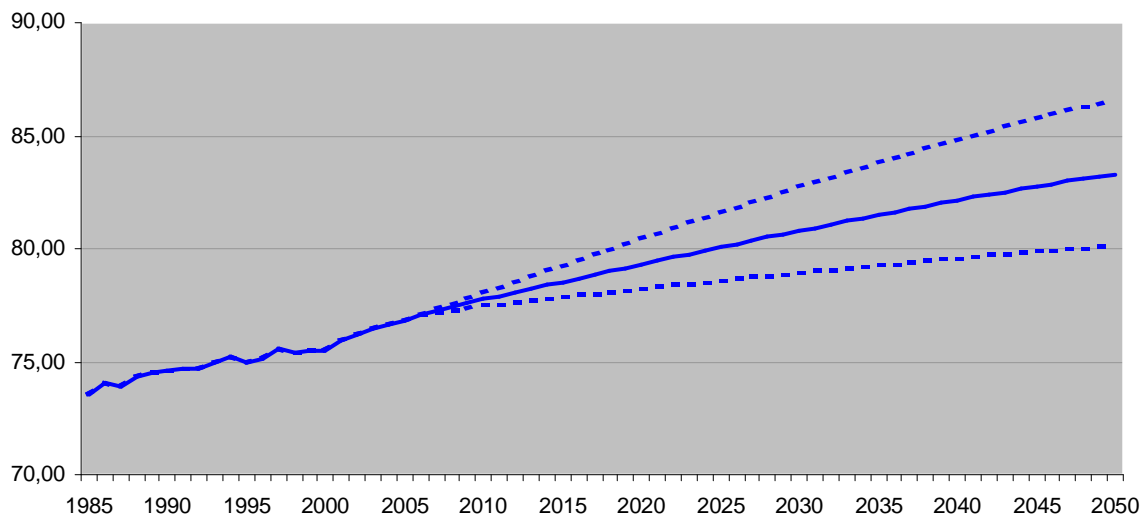
**TOTAL FERTILITY RATE PROJECTION 2007-2050
(3 scenarios)**



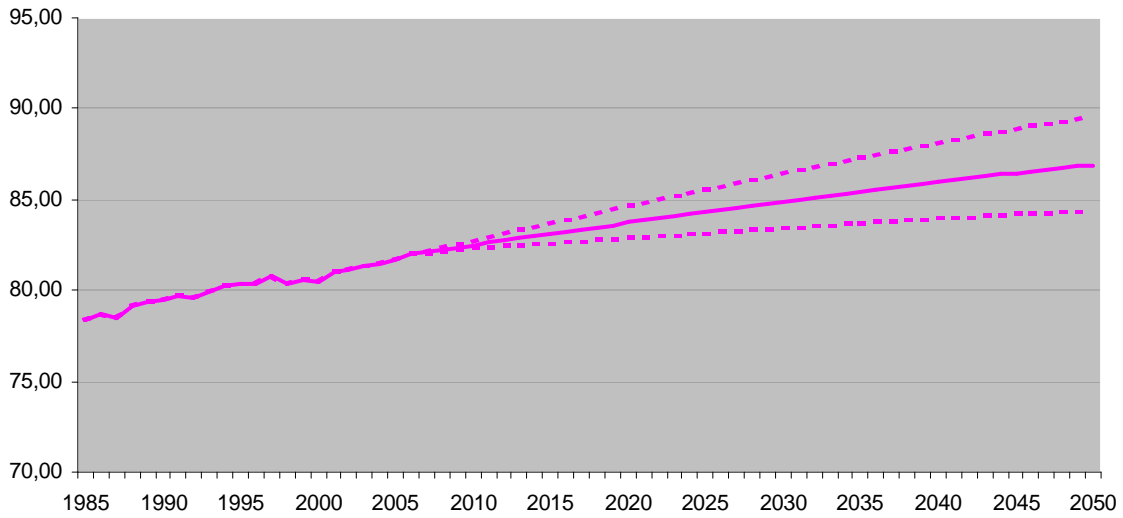
3. Mortality

Life expectancy was increased from 70,13 years in 1970 to 77,09 in 2006 for males and from 73,64 years to 81,97 in 2006 for females respectively and a further increase in variant rates is foreseen for all three scenarios.

**POPULATION PROJECTIONS LIFE EXPECTANCY AT BIRTH MALES
(3 scenarios)**



**POPULATION PROJECTIONS LIFE EXPECTANCY AT BIRTH FEMALES
(3 scenarios)**

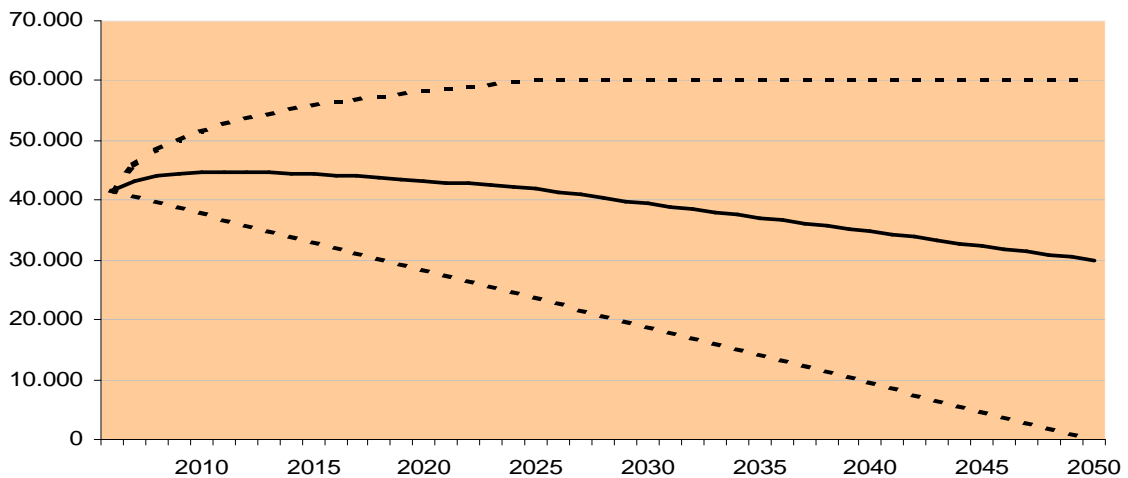


4. Migration

During the decade of the 90s, a large immigration flow towards Greece was observed. According to the Population Census of 2001, the number of foreigners who were recorded as having their permanent residence in Greece reached 761.813 people, compared to almost 138.000 people recorded in the 1991 Census. In the last years, the net annual migration flow is estimated to be 35 – 40 thousand people.

The low scenario foresees a gradual decrease of net migration, until it reaches zero level by 2050. The high scenario foresees an increased net migration flow of 60.000 people annually, while the medium scenario foresees a slight recession from the current level.

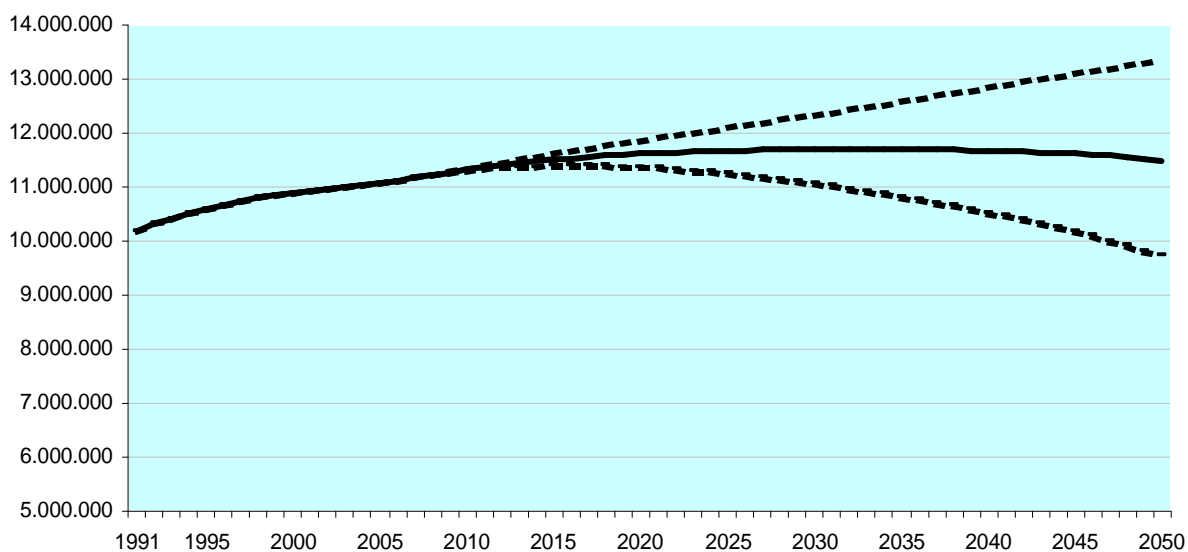
**NET MIGRATION PROJECTION 2007-2050
(3 scenarios)**



5. Population

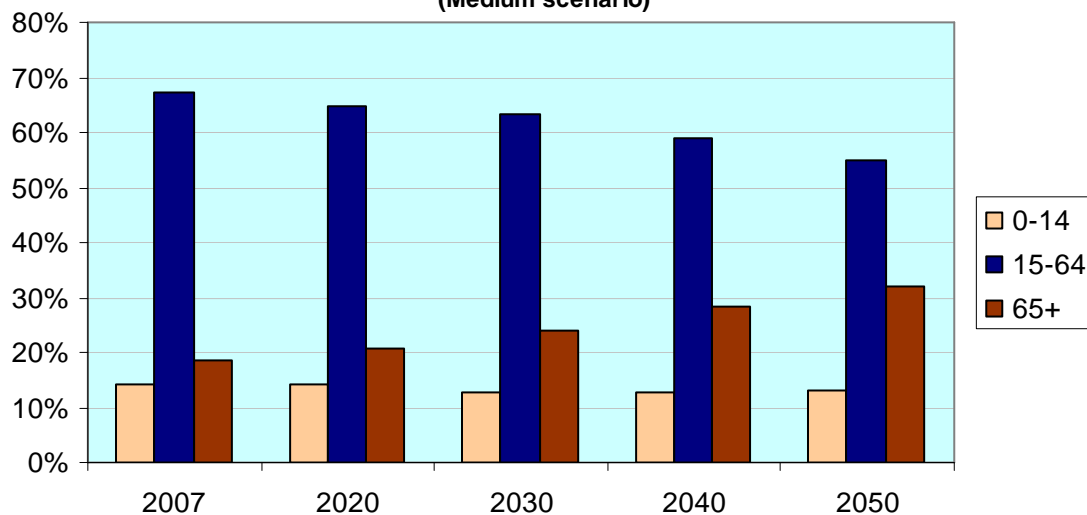
Based on the above assumptions, population in Greece is expected to reach approximately 11.500.000 people by 2050 (medium scenario).

**POPULATION PROJECTIONS 2007 - 2050 TOTAL POPULATION
(3 scenarios)**



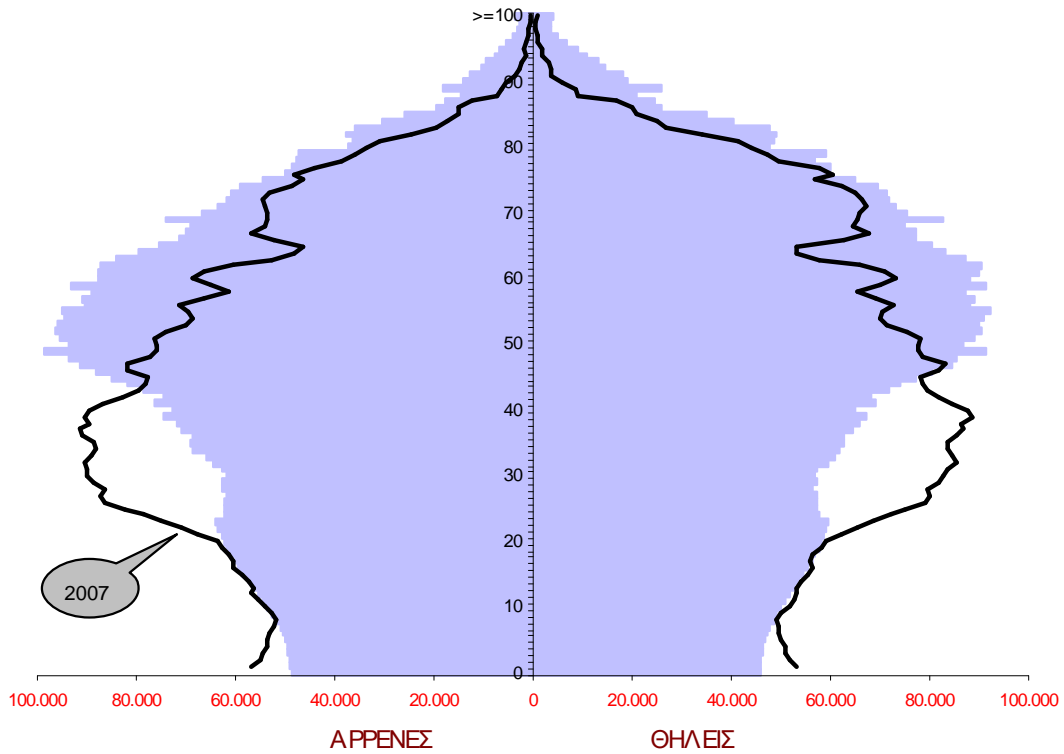
However, according to the medium scenario the population structure is expected to be different presenting a high population ageing.

**POPULATION PROJECTIONS 2007-2050 POPULATION STRUCTURE
(Medium scenario)**



Population aged 65 years and more, starting from the level of 18,5% in 01/01/2007, is expected to reach the level of 32% by 2050, pushing upwards the relevant ageing indexes. The forthcoming changes in the structure of the population are depicted in the population ages pyramids as well.

POPULATION PROJECTIONS AGE PYRAMID 2030 (Medium scenario)



POPULATION PROJECTIONS AGE PYRAMID 2050 (Medium scenario)

