



**HELLENIC REPUBLIC
HELLENIC STATISTICAL AUTHORITY**

Piraeus, 31 July 2020

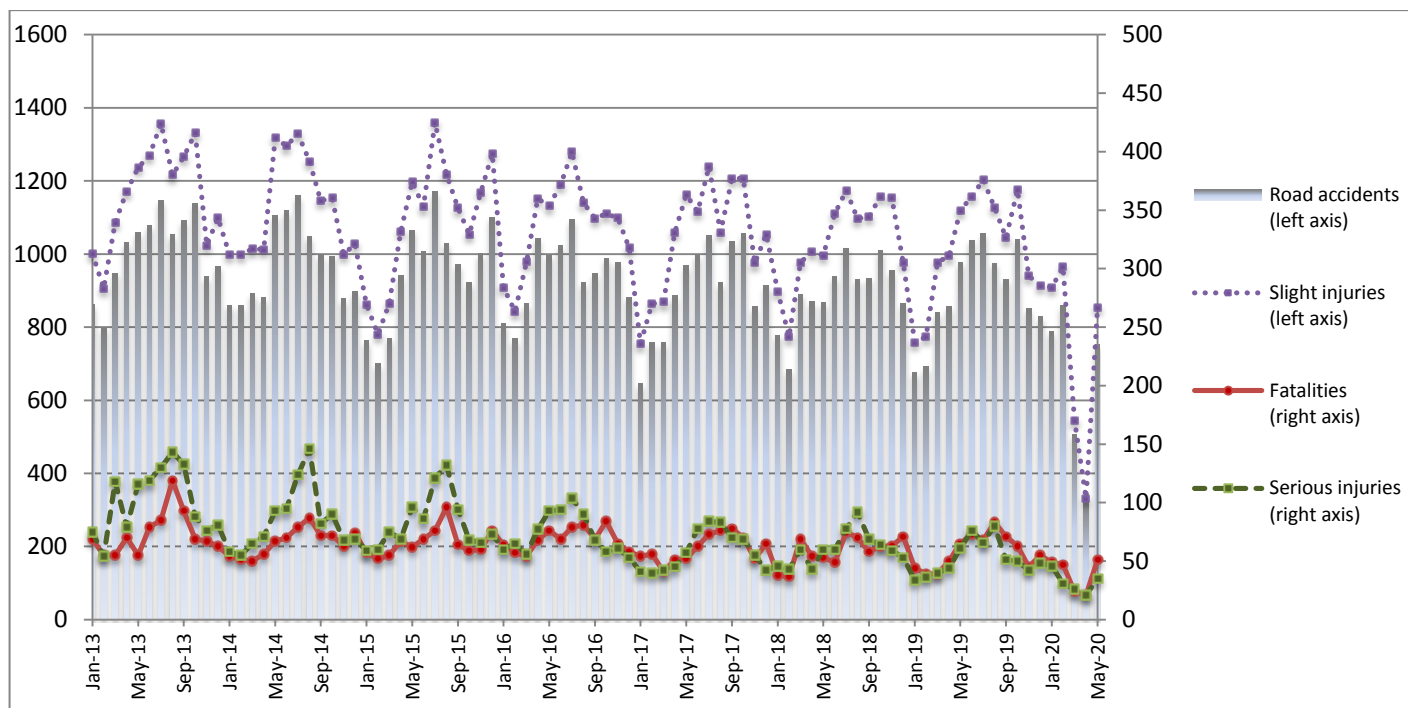
PRESS RELEASE

ROAD TRAFFIC ACCIDENTS: May 2020

The Hellenic Statistical Authority (ELSTAT) announces provisional¹ data on Road Traffic Accidents for May 2020. In particular, the road traffic accidents which occurred in Greece, resulting in death or injury, decreased by 23.2% in comparison with the corresponding month of 2019 (751 road accidents in May 2020, against 978 road accidents in May 2019).

The casualties of the injury-causing accidents that occurred in May 2020 were as follows: 51 deaths, 35 serious injuries and 854 slight injuries. In contrast, in May 2019 the corresponding figures were: 65 deaths, 61 serious injuries and 1119 slight injuries. Therefore, road accident casualties in May 2020 decreased by 21.5% for deaths, by 42.6% for serious injuries and by 23.7% for slight injuries.

**Graph 1: Road traffic accidents and casualties,
January 2013 - May 2020**



Provisional data for the period June 2019 – May 2020

Information on methodological issues:

Sectoral Statistics Division
Transport Statistics Section
P. Tzortzi, L. Miliara
Tel: +30 213 135 2187, +30 213 135 3095
Fax : +30 213 135 2757
e-mail: p.tzortzi@statistics.gr , l.miliara@statistics.gr

Information for data provision:

Tel: +30 213 135 2022, 2308, 2310
e-mail: data.dissem@statistics.gr

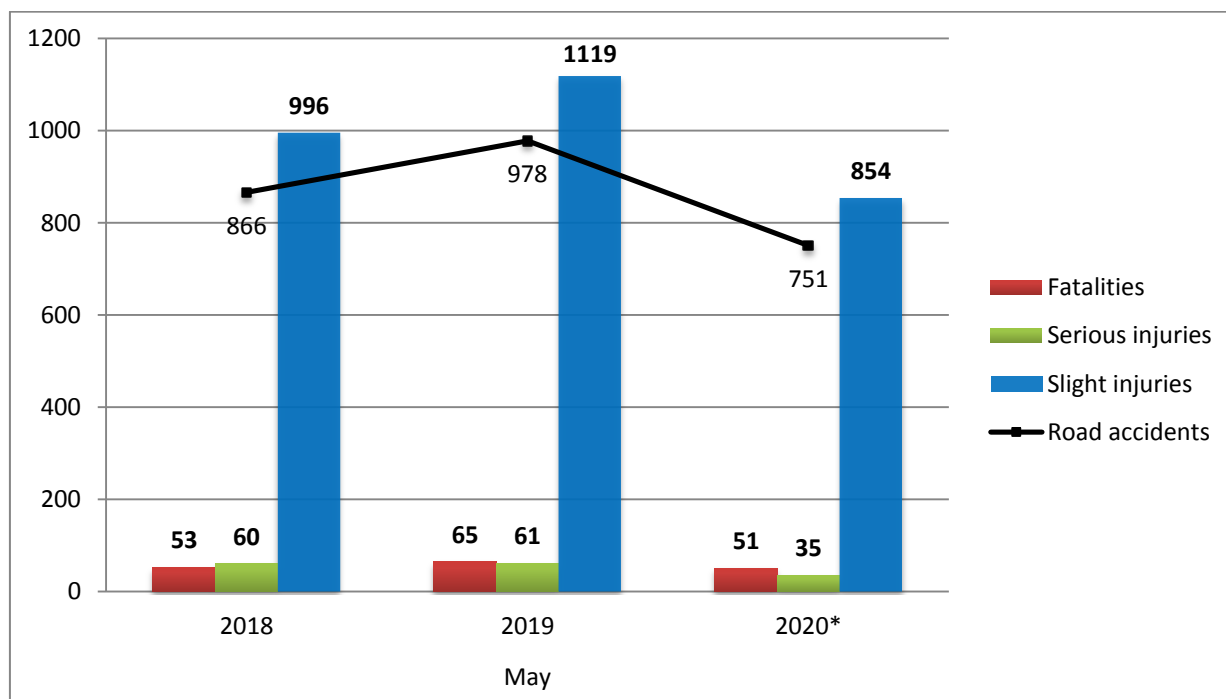
^[1] Data for the reference year is provisional until the finalization of the annual data, which takes place 10 months after the end of the reference year and is published in the corresponding press release of the following year. During these 10 months the provisional data is updated on the basis of the data of the Road Accident Forms of that year which is transmitted to ELSTAT by Police Authorities (see explanatory notes).

Table 1: Road traffic accidents and casualties, May 2018 - 2020*

	May				
	2018	2019	2019/2018 (%)	2020*	2020*/2019 (%)
Road accidents	866	978	<i>12.9</i>	751	<i>-23.2</i>
Fatalities	53	65	<i>22.6</i>	51	<i>-21.5</i>
Total injuries	1,056	1,180	<i>11.7</i>	889	<i>-24.7</i>
Serious injuries	60	61	<i>1.7</i>	35	<i>-42.6</i>
Slight injuries	996	1,119	<i>12.3</i>	854	<i>-23.7</i>

* Provisional data

Graph 2: Road traffic accidents and casualties, May 2018 - 2020*



* Provisional data

Table 2: Road traffic accidents and casualties, by region and department, May 2019 and 2020*

Region and department	Road accidents			Fatalities			Serious injuries			Slight injuries		
	2019	2020*	%	2019	2020*	%	2019	2020*	%	2019	2020*	%
Greece Total	978	751	-23.2	65	51	-21.5	61	35	-42.6	1,119	854	-23.7
Anatoliki Makedonia and Thraki (East Macedonia and Thrace)	37	34	-8.1	2	3	50.0	2	1	-50.0	44	35	-20.5
Drama	8	4	-50.0	0	0		0	0		10	4	
Evros	5	6	20.0	1	1		0	0		5	6	
Kavala	14	8	-42.9	0	1		1	0		15	7	
Xanthi	4	3	-25.0	0	1		1	1		4	4	
Rodopi	6	13	116.7	1	0		0	0		10	14	
Kentriki Makedonia (Central Macedonia)	187	102	-45.5	13	6	-53.8	8	5	-37.5	213	114	-46.5
Imathia	4	1	-75.0	3	0		0	1		4	0	
Thessaloniki	162	83	-48.8	7	2		5	0		193	101	
Kilkis	3	3	0.0	1	1		1	0		2	3	
Pella	5	8	60.0	0	1		0	3		5	4	
Pieria	3	1	-66.7	1	0		0	1		2	0	
Serres	5	2	-60.0	1	2		1	0		3	0	
Chalkidiki	5	4	-20.0	0	0		1	0		4	6	
Dytiki Makedonia (West Macedonia)	4	4	0.0	3	0	-100.0	0	0	-	3	4	33.3
Grevena	1	0	-100.0	0	0		0	0		1	0	
Kastoria	1	1	0.0	1	0		0	0		2	1	
Kozani	0	3	-	0	0		0	0		0	3	
Florina	2	0	-100.0	2	0		0	0		0	0	
Ipeiros (Epirus)	6	5	-16.7	3	0	-100.0	0	0	-	7	6	-14.3
Arta	1	0	-100.0	1	0		0	0		1	0	
Thesprotia	2	2	0.0	0	0		0	0		3	3	
Ioannina	2	3	50.0	1	0		0	0		3	3	
Preveza	1	0	-100.0	1	0		0	0		0	0	
Thessalia (Thessaly)	17	18	5.9	3	4	33.3	3	0	-100.0	15	17	13.3
Karditsa	2	3	50.0	1	0		0	0		3	3	
Larissa	8	8	0.0	2	3		1	0		5	6	
Magnissia	4	4	0.0	0	1		1	0		5	5	
Trikala	3	3	0.0	0	0		1	0		2	3	
Ionian Nisia (Ionian Islands)	15	11	-26.7	2	1	-50.0	0	1	-	17	10	-41.2
Zakynthos	5	3	-40.0	1	0		0	0		7	3	
Kerkyra	4	4	0.0	1	0		0	0		4	4	
Kefallinia	3	1	-66.7	0	1		0	0		3	0	
Lefkada	3	3	0.0	0	0		0	1		3	3	

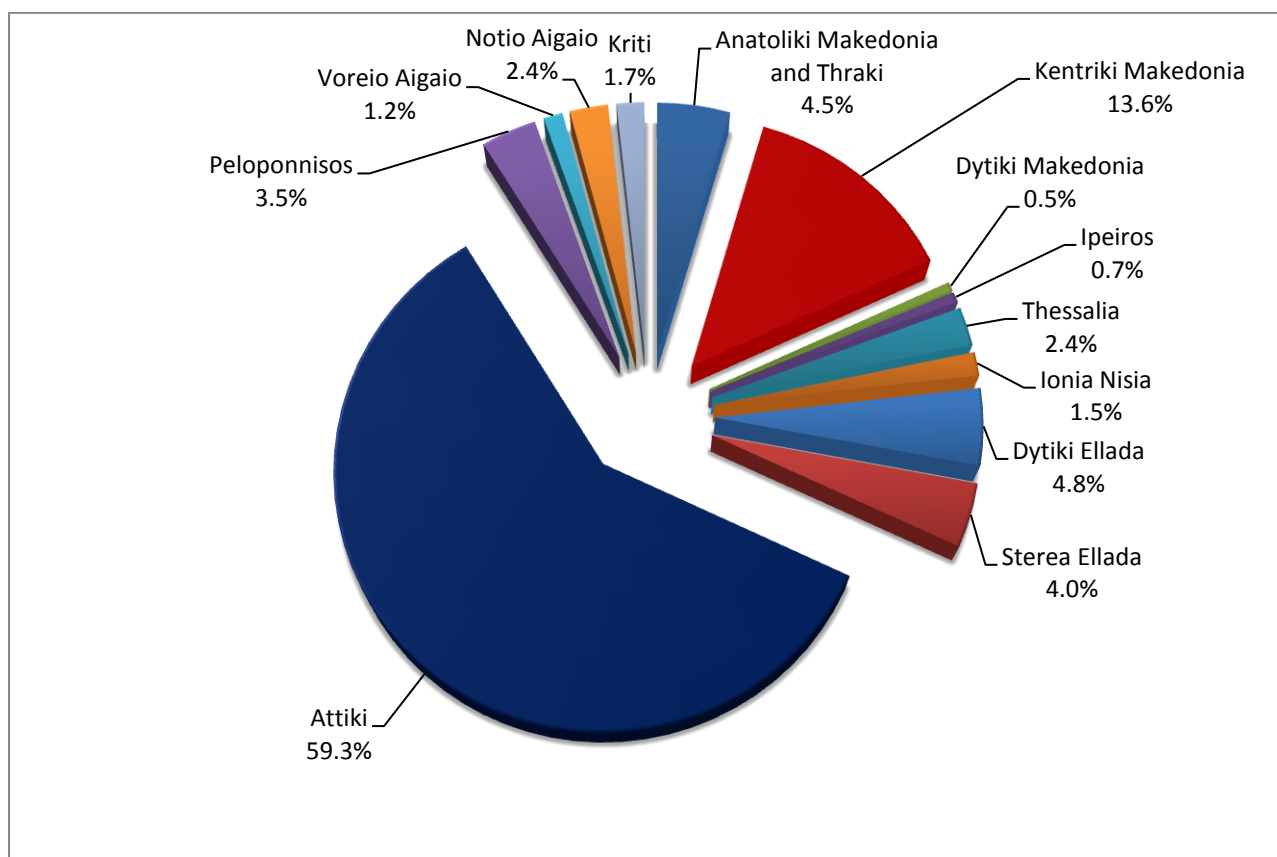
* Provisional data

Table 2: Road traffic accidents and casualties, by region and department, May 2019 and 2020* (Continued)

Region and department	Road accidents			Fatalities			Serious injuries			Slight injuries		
	2019	2020*	%	2019	2020*	%	2019	2020*	%	2019	2020*	%
Dytiki Ellada (West Greece)	37	36	-2.7	7	5	-28.6	2	5	150.0	50	47	-6.0
Etolia & Akarnania	10	12	20.0	1	1		0	0		14	22	
Achaia	22	21	-4.5	3	3		2	4		28	23	
Ilia	5	3	-40.0	3	1		0	1		8	2	
Sterea Ellada	39	30	-23.1	3	4	33.3	2	2	0.0	48	36	-25.0
Viotia	2	4	100.0	0	0		0	0		2	7	
Evia	18	14	-22.2	2	1		0	1		21	15	
Evrytania	1	1	0.0	0	0		0	0		1	1	
Fthiotida	13	11	-15.4	0	3		2	1		17	13	
Fokida	5	0	-100.0	1	0		0	0		7	0	
Attiki (Attica)	516	445	-13.8	9	15	66.7	20	11	-45.0	592	513	-13.3
Peloponnisos (Peloponnese)	49	26	-46.9	7	3	-57.1	10	4	-60.0	58	28	-51.7
Argolida	10	9	-10.0	1	1		1	2		9	12	
Arkadia	7	3	-57.1	2	0		0	1		7	3	
Korinthia	18	10	-44.4	0	1		8	1		30	8	
Lakonia	5	1	-80.0	3	0		0	0		2	1	
Messinia	9	3	-66.7	1	1		1	0		10	4	
Voreio Aigaio (North Aegean)	18	9	-50.0	4	2	-50.0	5	1	-80.0	18	8	-55.6
Lesvos	12	5	-58.3	4	2		3	0		13	4	
Samos	5	2	-60.0	0	0		2	1		4	2	
Chios	1	2	100.0	0	0		0	0		1	2	
Notio Aigaio (South Aegean)	36	18	-50.0	4	3	-25.0	3	3	0.0	41	21	-48.8
Dodekanissos	14	12	-14.3	4	3		1	0		14	18	
Kyklades	22	6	-72.7	0	0		2	3		27	3	
Kriti (Crete)	17	13	-23.5	5	5	0.0	6	2	-66.7	13	15	15.4
Iraklio	10	7	-30.0	0	2		5	2		8	9	
Lassithi	2	1	-50.0	1	0		0	0		1	2	
Rethymno	0	3	-	0	1		0	0		0	2	
Chania	5	2	-60.0	4	2		1	0		4	2	

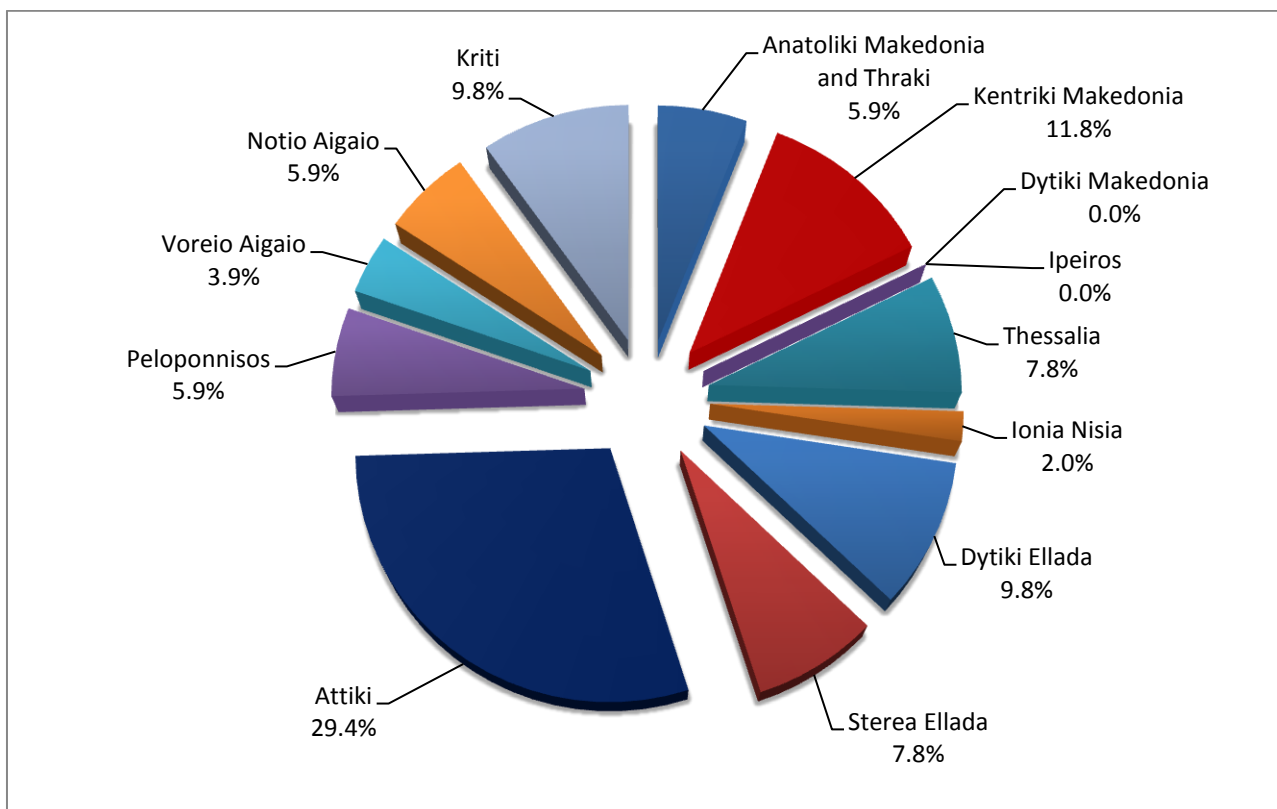
* Provisional data

Graph 3: Road traffic accidents by region, May 2020 *



** Provisional data*

Graph 4: Fatalities by region, May 2020 *



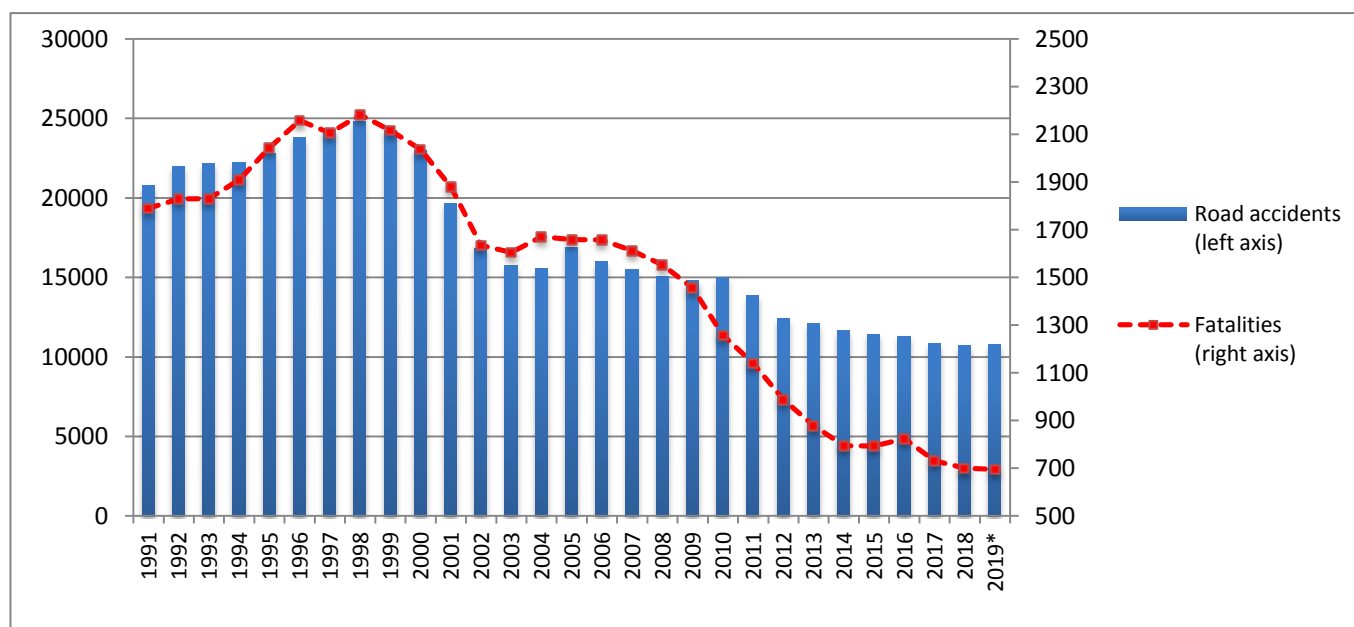
** Provisional data*

Table 3: Road traffic accidents and casualties for the period January - May 2018, 2019 and 2020*

	2018		2019		2020 *
	January - May	Total year	January - May	Total year*	January - May
Road Accidents	4,087	10,737	4,042	10,759	3,230
Annual Change (%)			-1.1	0.2	-20.1
Fatalities	251	700	237	695	192
Annual Change (%)			-5.6	-0.7	-19.0
Serious injuries	252	727	215	628	159
Annual Change (%)			-14.7	-13.6	-26.0
Slight injuries	4,651	12,422	4,623	12,185	3,605
Annual Change (%)			-0.6	-1.9	-22.0

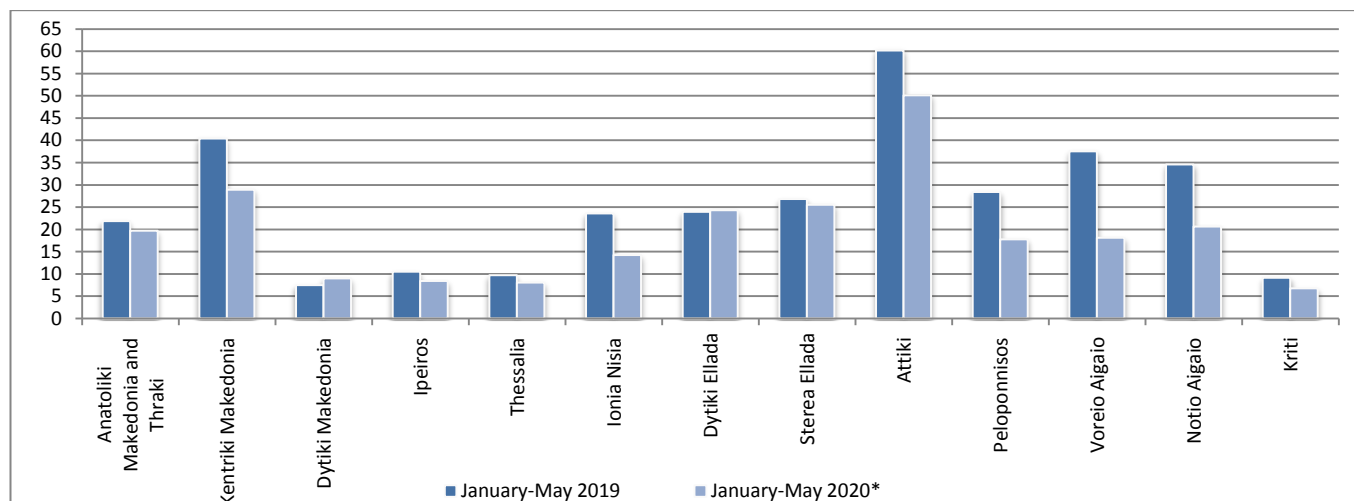
* Provisional data

Graph 5: Total road traffic accidents and fatalities, 1991-2019*



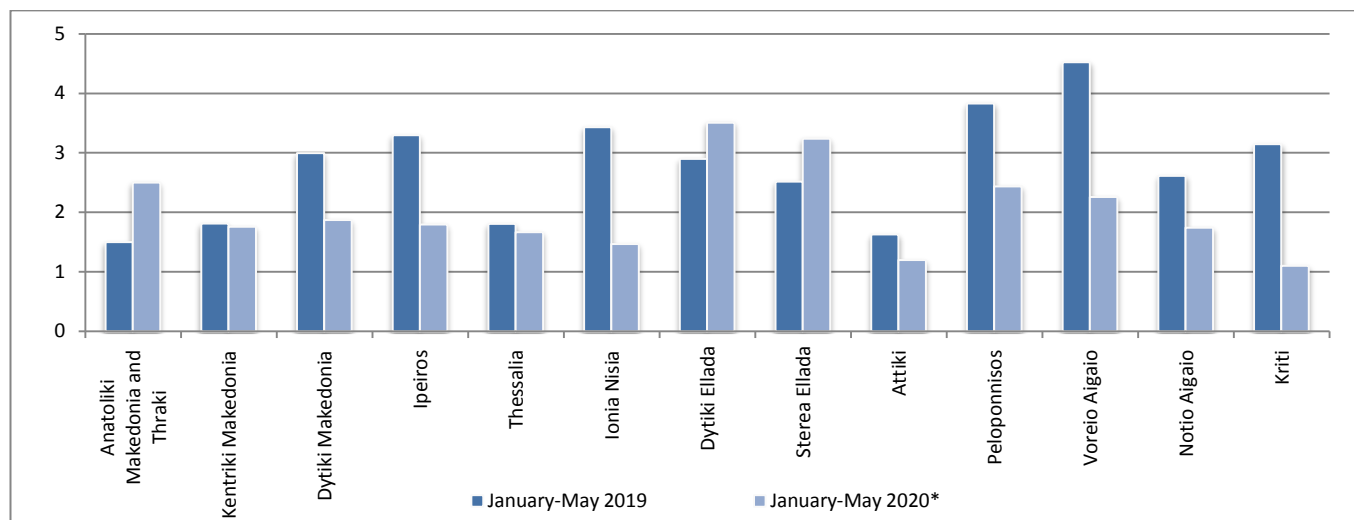
*Provisional data for the period June 2019 – December 2019

Graph 6: Road traffic accidents per 100,000 inhabitants

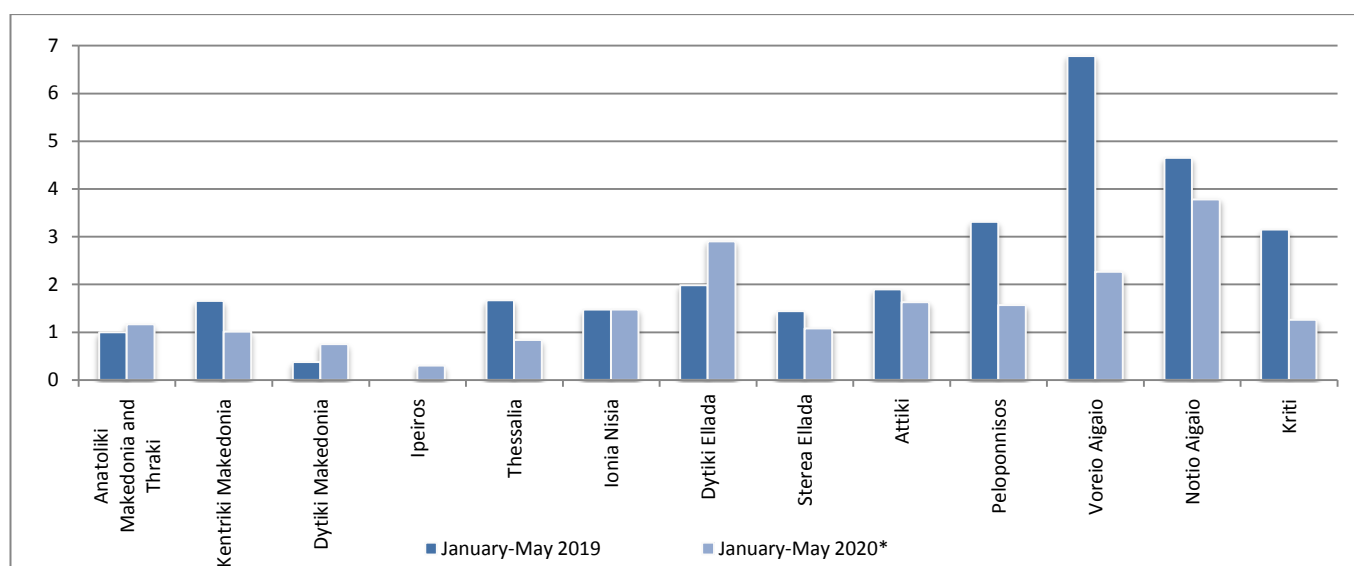


* Provisional data

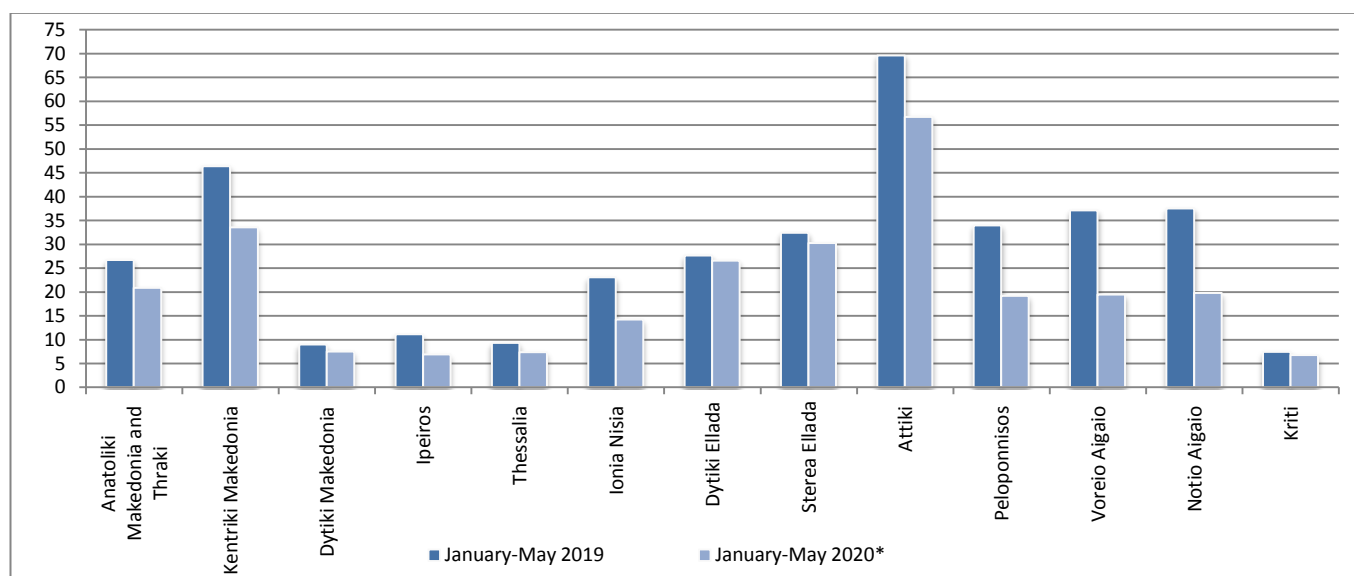
Graph 7: Fatalities per 100,000 inhabitants



Graph 8: Serious injuries per 100,000 inhabitants



Graph 9: Slight injuries per 100,000 inhabitants



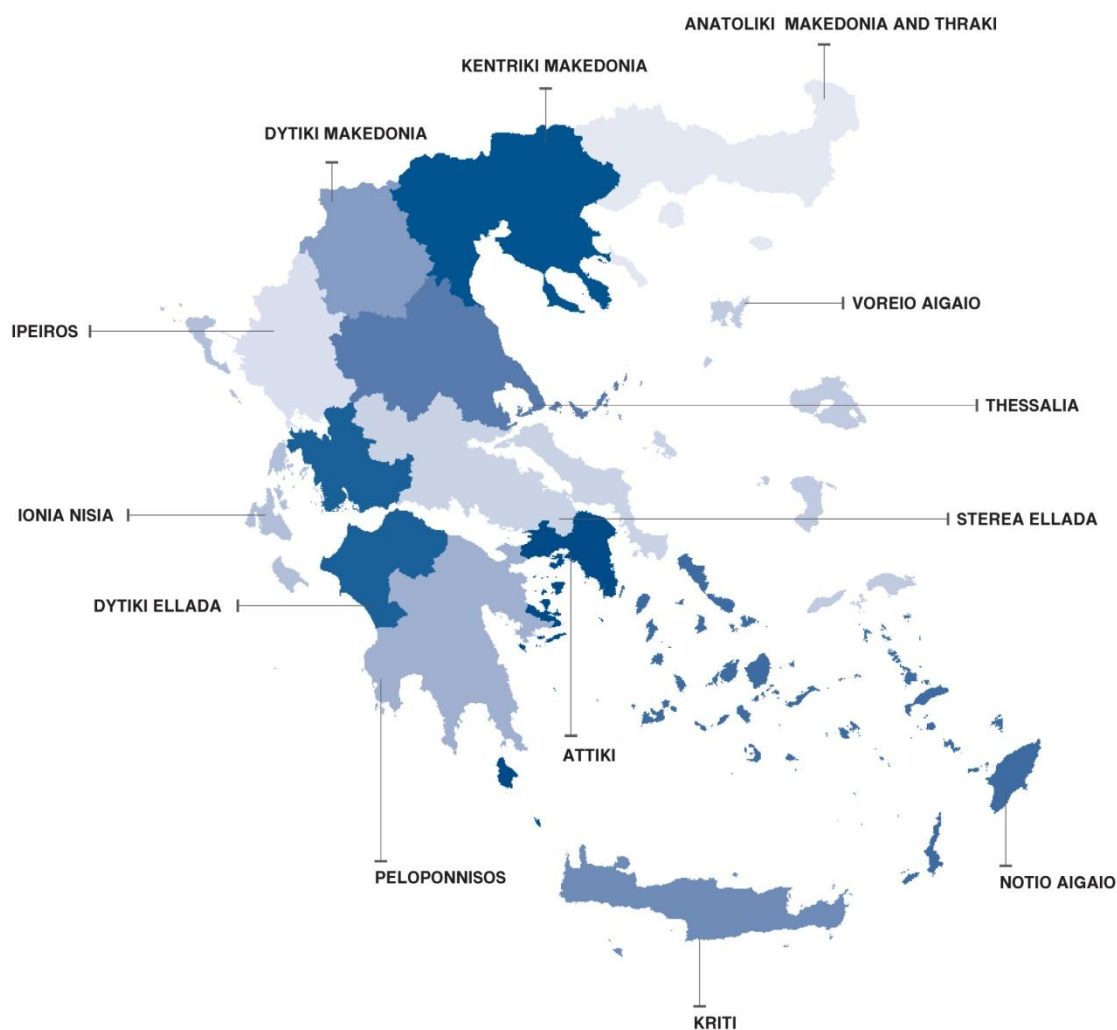
* Provisional data

EXPLANATORY NOTES

Survey on Road Traffic Accidents The Survey on Road Traffic Accidents is conducted on a monthly basis and it records, for each region (see map) and department of Greece and for each month separately, the number of accidents resulting in death or injury, as well as the number of persons injured by categories (drivers, passengers, pedestrians).

On a yearly basis, road traffic accidents are further analyzed. The competent agencies for filling in/collecting the forms on road accidents are the local Police Authorities and the local Port Authorities of Greece.

The lower level of analysis for the place where an injury road accident occurred is the settlement. Data are collected on a monthly basis. The main variables are the following: place of accident, kind of road, casualties, conditions of road surface and type of road.



Legal basis The Survey on Road Traffic Accidents is governed by Council Decision 93/704 of the European Community.

Reference period Monthly.

Availability of data Provisional data are available 2 months after the reference month.
Final data are available 10 months after the reference year.

National Road accident (injury accident): Any accident involving at least one road motor vehicle in motion

definitions on a public road or square to which the public has access (excluding yards, industrial sites or vehicle depot of public transport enterprises), resulting in at least one injured or killed person. Accidents with only material damages are not included.

Fatality (Death): Any person killed immediately or dying within 30 days as a result of an injury accident (This national definition applies since 01.01.1996)

Person injured: Any person who sustained an injury as result of an injury accident, and who normally needs medical treatment.

Serious injury: Any person who sustained an injury as result of an injury accident, such as brain damages, mutilation, multiple injuries, which may result in lack of awareness or which are life-threatening.

Slight injury: Any person injured who sustained minor and not life-threatening injuries.

Vehicle: Include motor vehicles, trolleybuses, motorcycles, bicycles, motorbikes, agricultural and road making machines, animal and hand-drawn vehicles. Railway vehicles are excluded, unless the road accident involves at least one of the aforementioned types of vehicles and therefore, railway vehicles are considered vehicles.

Methodology The forms of the survey are filled in by the local Police Authorities and the local Port Authorities as well.

References More information about Road Traffic Accidents is available on ELSTAT's website and more specifically at the link: <https://www.statistics.gr/en/statistics/-/publication/SDT03/->.