



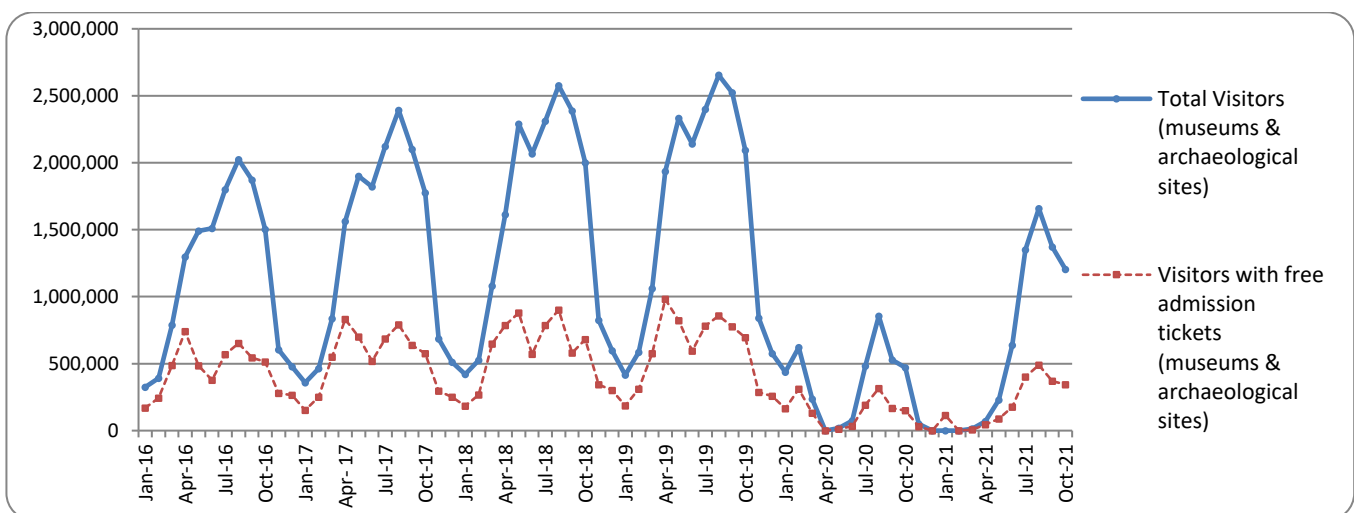
PRESS RELEASE

SURVEY ON MUSEUMS AND ARCHAEOLOGICAL SITES ATTENDANCE OCTOBER 2021

The Hellenic Statistical Authority (ELSTAT) announces the results of the *Survey on Museums and Archaeological Sites Attendance* for October 2021. More specifically:

- During October 2021, compared with the corresponding period of October 2020, Museums recorded an 188.8% increase in the number of visitors and an 163.3% increase in the number of free admission visitors as well as a 220.7% increase in their receipts (Table 1).
- In October 2021 compared with the corresponding month of 2020, the number of visitors at Archaeological sites recorded an increase of 145.5%, while an increase of 114.2% was observed in the number of free admission visitors and an increase of 175.1% was observed in the corresponding receipts (Table 1).
- During the ten month period from January to October 2021, compared to the corresponding period of 2020, an increase of 59.5% was observed in the number of visitors of Museums and an increase of 24.9% was recorded in the number of free admission visitors, while an 137.4% increase was observed in the relevant receipts, given the suspension of operation of Museums, from March 14th until June 16th 2020 and again gradually from November 1st 2020 until May 13th 2021, in the framework of the preventative measures against the Covid-19 pandemic (Table 2).
- As regards Archaeological sites, during the ten month period from January to October 2021, compared to the corresponding period of 2020, an increase of 82.0% was recorded in the number of visitors, while an increase of 33.2% was observed in the number of free admission visitors and an increase of 145.2% was observed in the relevant receipts, given the suspension of operation of Archaeological sites from March 14th until May 17th 2020 and from November 7th 2020 until March 21st 2021 in the framework of the preventative measures against the Covid-19 pandemic (Table 2).

Graph 1: Visitors of Museums and Archaeological sites (January 2016 – October 2021)



Information on methodological issues:

Sectoral Statistics Division
Tourism and Cultural Statistics Section
Head of the Section: Asimina Katri
Tel: +30 213 135 2168
e-mail: a.katri@statistics.gr

Information for data provision:

Tel. +30 213 135 2022, 2308, 2310
e-mail: data.dissem@statistics.gr

**TABLE 1: VISITORS OF MUSEUMS AND ARCHAEOLOGICAL SITES - TOTAL RECEIPTS
(OCTOBER 2020 & OCTOBER 2021)**

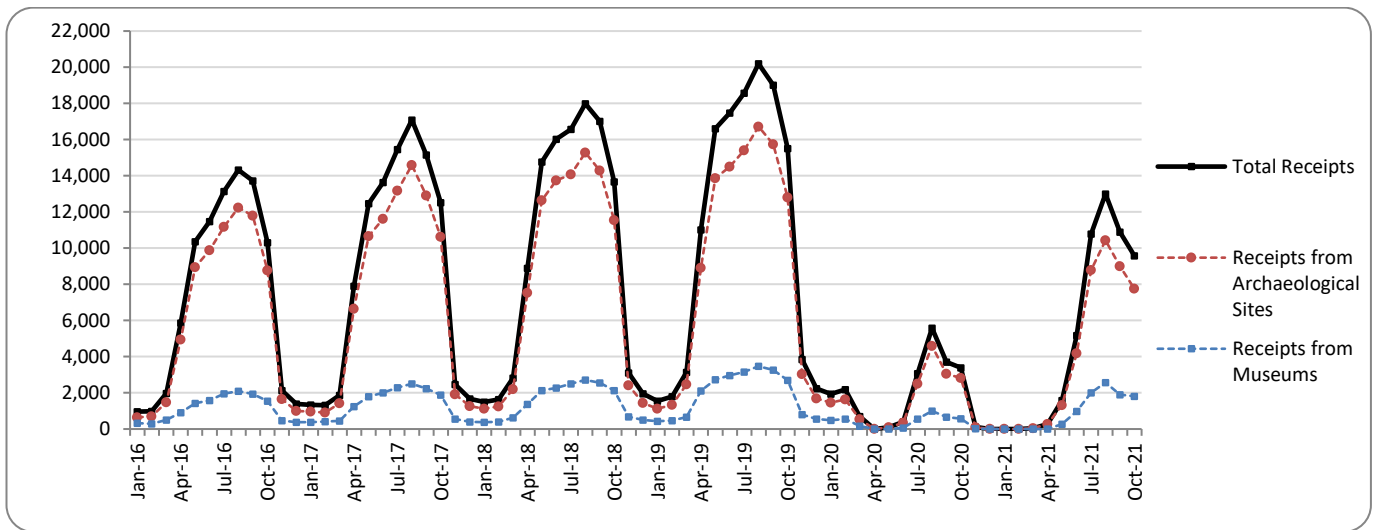
I. NUMBER OF VISITORS			
Museums and Archaeological sites	2020 ⁽²⁾	2021 ⁽²⁾	Change 2021/2020
Total number of visitors (A+B)	469,971	1,203,105	156.0%
A. Museums (C+E)	114,027	329,255	188.8%
Acropolis Museum	29,371	86,972	196.1%
National Archaeological	10,328	30,488	195.2%
Ancient Olympia	2,021	6,430	218.2%
Palace of the Grand Master (Rhodes)	11,805	25,552	116.5%
Herakleion Archaeological (Crete)	7,130	22,515	215.8%
White Tower	5,820	11,508	97.7%
Delphi	4,048	9,524	135.3%
Other museums	43,504	136,266	213.2%
B. Archaeological Sites (D+F)	355,944	873,850	145.5%
Epidavros ⁽¹⁾	18,266	28,536	56.2%
The Acropolis of Mycenae & Atreus' Treasure	9,251	26,554	187.0%
The Acropolis of Athens	67,024	187,214	179.3%
Sounio	13,564	23,940	76.5%
The Acropolis of Lindos	26,164	65,555	150.6%
Royal Tombs of Vergina	3,818	9,298	143.5%
Ancient Olympia	7,353	25,638	248.7%
Knossos (Crete)	27,494	81,858	197.7%
Phaistos (Crete)	4,746	9,433	98.8%
Ancient Korinthos ⁽¹⁾	4,099	12,000	192.8%
Mystras ⁽¹⁾	6,006	13,259	120.8%
Delphi	9,909	24,904	151.3%
Other archaeological sites	158,250	365,661	131.1%
II. VISITORS WHO PAID TICKET			
	2020 ⁽²⁾	2021 ⁽²⁾	Change 2021/2020
Total number of visitors who paid ticket (C+D)	318,938	858,299	169.1%
C. Museums	70,601	214,910	204.4%
D. Archaeological sites	248,337	643,389	159.1%
III. VISITORS WITH FREE ADMISSION TICKETS			
	2020 ⁽²⁾	2021 ⁽²⁾	Change 2021/2020
Total number of visitors with free admission ticket (E+F)	151,033	344,806	128.3%
E. Museums	43,426	114,345	163.3%
F. Archaeological sites	107,607	230,461	114.2%
IV. RECEIPTS (euros)			
	2020 ⁽²⁾	2021 ⁽²⁾	Change 2021/2020
Total Receipts (G+H)	3,386,307	9,572,952	182.7%
G. Museums	566,389	1,816,584	220.7%
H. Archaeological sites	2,819,918	7,756,368	175.1%

⁽¹⁾ Flat rate ticket, valid both for the museum and the archaeological site.

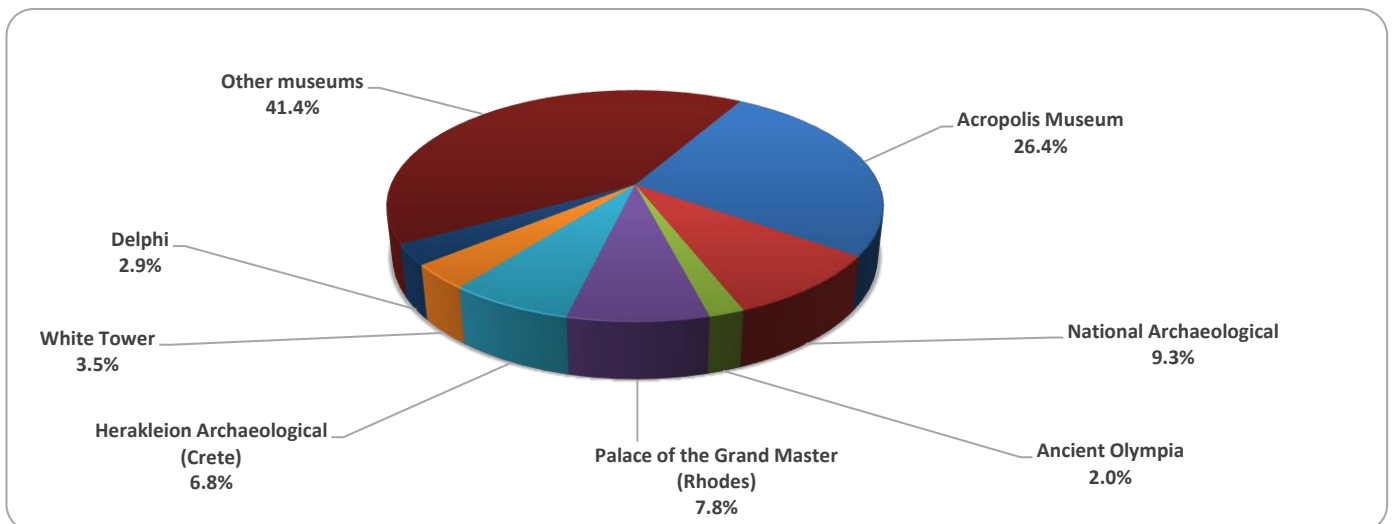
⁽²⁾ The operation of Museums was suspended from March 14th until June 16th 2020 and again gradually from November 1st 2020 until May 13th 2021. The operation of Archaeological Sites was suspended from March 14th until May 17th 2020 and from November 7th 2020 until March 21st 2021, in the framework of the preventative measures against the Covid-19 pandemic.

The following graphs depict the evolution of the receipts of Museums and Archaeological Sites (Graph 2), as well as the number of visitors by Archaeological Sites (Graph 3).

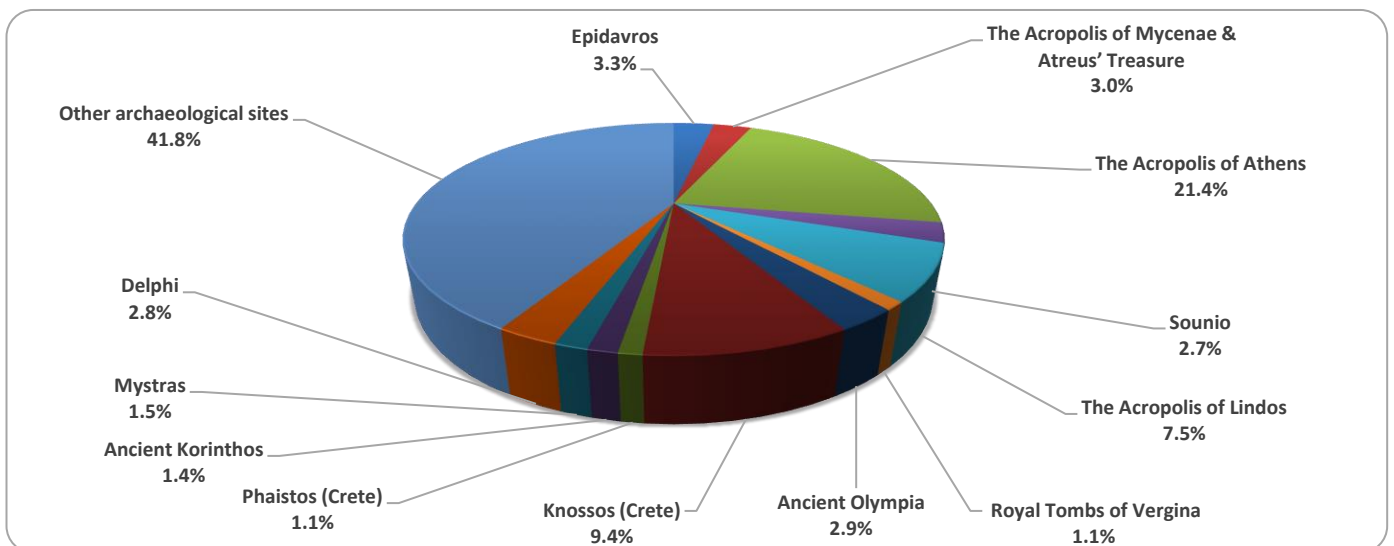
Graph 2: Receipts from Museums and Archaeological Sites (January 2016 – October 2021)
(in thousand euro)



Graph 3: Percentage distribution of visitors by Museum, October 2021



Graph 4: Percentage distribution of visitors by Archaeological site, October 2021



**TABLE 2: VISITORS OF MUSEUMS AND ARCHAEOLOGICAL SITES - TOTAL RECEIPTS
(2019, 2020, JANUARY- OCTOBER 2020, 2021)**

I. VISITORS					
Museums and Archaeological sites	2019	2020 ⁽²⁾	JANUARY-OCTOBER		change 2021/2020
			2020 ⁽²⁾	2021 ⁽²⁾	
Total number of visitors (A+B)	19,559,278	3,772,828	3,723,589	6,531,628	75.4%
A. Museums (C+E)	5,895,927	1,100,904	1,090,832	1,739,815	59.5%
Acropolis Museum	1,755,435	325,969	323,387	456,491	41.2%
National Archaeological	608,876	98,175	97,324	154,551	58.8%
Ancient Olympia	159,348	21,956	21,415	30,057	40.4%
Palace of the Grand Master (Rhodes)	263,958	54,572	53,734	134,642	150.6%
Herakleion Archaeological (Crete)	660,533	63,027	62,142	118,578	90.8%
White Tower	251,760	62,007	62,007	63,159	1.9%
Delphi	275,993	41,984	41,412	47,342	14.3%
Other museums	1,920,024	433,214	429,411	734,995	71.2%
B. Archaeological Sites (D+F)	13,663,351	2,671,924	2,632,757	4,791,813	82.0%
Epidavros ⁽¹⁾	535,751	103,532	102,425	164,617	60.7%
The Acropolis of Mycenae & Atreus' Treasure	502,619	78,839	77,714	137,506	76.9%
The Acropolis of Athens	3,593,586	620,132	608,191	1,027,798	69.0%
Sounio	337,544	100,319	98,596	146,954	49.0%
The Acropolis of Lindos	525,757	156,462	155,006	342,032	120.7%
Royal Tombs of Vergina	223,151	37,586	37,281	48,484	30.1%
Ancient Olympia	457,710	64,759	63,789	132,013	107.0%
Knossos (Crete)	949,192	175,927	173,599	425,265	145.0%
Phaistos (Crete)	121,796	31,885	31,640	46,400	46.6%
Ancient Korinthos ⁽¹⁾	214,023	31,981	31,329	51,313	63.8%
Mystras ⁽¹⁾	147,713	36,352	35,375	72,498	104.9%
Delphi	405,348	75,983	74,579	125,129	67.8%
Other archaeological sites	5,649,161	1,158,167	1,143,233	2,071,804	81.2%
II. VISITORS WHO PAID TICKET					
	2019	2020 ⁽²⁾	JANUARY-OCTOBER		change 2021/2020
			2020 ⁽²⁾	2021 ⁽²⁾	
Total number of visitors who paid ticket (C+D)	12,434,987	2,268,397	2,250,464	4,610,130	104.9%
C. Museums	3,345,997	605,426	601,173	1,128,395	87.7%
D. Archaeological sites	9,088,990	1,662,971	1,649,291	3,481,735	111.1%
III. VISITORS WITH FREE ADMISSION TICKETS					
	2019	2020 ⁽²⁾	JANUARY-OCTOBER		change 2021/2020
			2020 ⁽²⁾	2021 ⁽²⁾	
Total number of visitors with free admission ticket (E+F)	7,124,291	1,504,431	1,473,125	1,921,498	30.4%
E. Museums	2,549,930	495,478	489,659	611,420	24.9%
F. Archaeological sites	4,574,361	1,008,953	983,466	1,310,078	33.2%
IV. RECEIPTS (euros)					
	2019	2020 ⁽²⁾	JANUARY-OCTOBER		change 2021/2020
			2020 ⁽²⁾	2021 ⁽²⁾	
Total Receipts (G+H)	130,938,846	21,176,036	21,067,214	51,345,131	143.7%
G. Museums ⁽³⁾	23,343,026	4,047,401	4,026,168	9,560,019	137.4%
H. Archaeological sites	107,595,820	17,128,635	17,041,046	41,785,112	145.2%

⁽¹⁾ Flat rate ticket, valid both for the museum and the archaeological site.

⁽²⁾ The operation of Museums was suspended from March 14th until June 16th 2020 and again gradually from November 1st 2020 until May 13th 2021. The operation of Archaeological Sites was suspended from March 14th until May 17th 2020 and from November 7th 2020 until March 21st 2021, in the framework of the preventative measures against the Covid-19 pandemic.

⁽³⁾ Revised data for 2020, due to transmission of additional data from administrative sources.

EXPLANATORY NOTES

Survey on Museums and Archaeological Sites Attendance	The Survey on Museums and Archaeological Sites Attendance has been producing results since 1970. The survey collects data from the Hellenic Organization of Cultural Resources Development (HOCRED), supervised by the Ministry of Culture and Sports, on the number of visitors and the receipts from the tickets sold in the Museums and Archaeological sites of the country. The corresponding data for the Acropolis Museum is available from December 2009 onwards.
Legal Framework	The survey is conducted since 1970 on a regular basis and it produces results on a monthly and yearly basis, in compliance with the Joint Ministerial Decision 15189/B379/73.
Reference Period	1/10/2021 - 31/10/2021
Methodology and Definitions	The survey is conducted on a monthly basis from data mainly collected from the Hellenic Organization of Cultural Resources Development (HOCRED), supervised by the Ministry of Culture and Sports, on the number of visitors and the receipts from the tickets sold in the Museums and Archaeological sites of the Country. ELSTAT tabulates and presents the data for the whole of the Country, by month and by year.
	Number of flat rate tickets: From April 1999 onwards, in some museums and the nearby archaeological sites, in addition to the ordinary ticket, a new “flat rate ticket” was established, which is valid for both the museum and the nearby archaeological site. The total number of these flat rate tickets for October 2021 was 69,486
References	More information on the Survey on Museums and Archaeological Sites Attendance and detailed time series are available on: http://www.statistics.gr/en/statistics/-/publication/SCI21/