



HELLENIC REPUBLIC

HELLENIC STATISTICAL AUTHORITY

Piraeus, 21 December 2023

## **ARRIVALS AND NIGHTS SPENT IN HOTELS, SIMILAR ESTABLISHMENTS, TOURIST CAMPSITES AND SHORT-STAY ACCOMMODATION ESTABLISHMENTS JANUARY – SEPTEMBER 2023 (provisional data)**

According to the provisional results of the survey on Arrivals and nights spent in hotels, similar establishments and tourist Campsites and of the survey on Arrivals and nights spent in short-stay accommodation establishments, conducted by the Hellenic Statistical Authority (ELSTAT), for the total of the establishments, an increase of 13.3% is recorded in arrivals (Table 1, Graph 1) and of 11.4% in nights spent (Table 2, Graph 1), for the period of January – September 2023 compared with the corresponding period of 2022.

More specifically, during the period of January-September 2023, arrivals of non-residents recorded an increase of 13.0% and of residents of 14.3%, while nights spent of non-residents recorded an increase of 10.8% and of residents of 14.6%, compared with the same period of 2022 (Tables 1 and 2, Graphs 3 and 4).

During the period of January – September 2023, the largest share of arrivals and nights spent in the total of tourist accommodation establishments, was recorded by non-residents, i.e. 75.4% of the total of arrivals and 84.8% of the total of nights spent (Graph 5).

For the same period, the average number of nights spent per person amounted to 4.3 nights. More specifically, the average number of nights spent was 4.8 nights for non-residents and 2.6 nights for residents (Graph 6).

The total occupancy of the bed places in hotels and similar establishments (excluding tourist campsites and short-stay accommodation establishments), which is based on the nights spent compared to the bed places that were in operation, amounted to 61.2% during the period of January – September 2023, compared with 57.6% of the corresponding period of 2022 (Table 3, Graph 7).

### **Information on methodological issues:**

Sectoral Statistics Division  
Tourism and Cultural Statistics Section  
Head of the Section: Eleni Papadopoulou  
Tel: +30 213 135 2168  
e-mail: [e.papadopoulou@statistics.gr](mailto:e.papadopoulou@statistics.gr)

### **Information for data provision:**

Tel. +30 213 135 2022, 2308, 2310  
e-mail: [data.dissem@statistics.gr](mailto:data.dissem@statistics.gr)

**Table1. Arrivals of residents and non-residents at hotels, similar establishments, short stay accommodation establishments and tourist campsites, by month, January – September 2022 and 2023<sup>(1)</sup>**

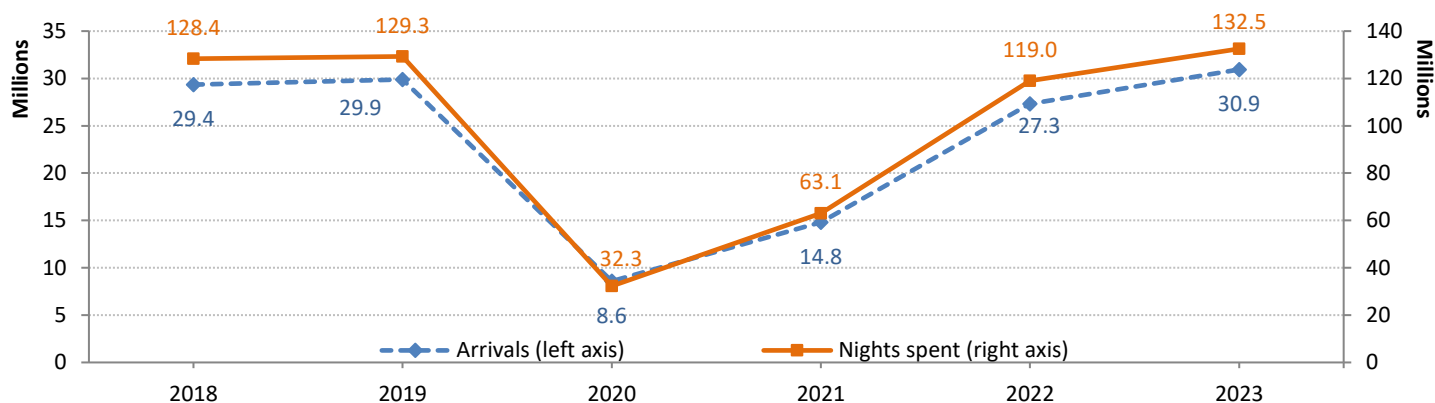
Reference period	2022					2023					Change 2023/2022		
	Total	Hotels and similar establishments and tourist campsites		Short-stay accommodation establishments		Total	Hotels and similar establishments and tourist campsites		Short-stay accommodation establishments		Total establishments		
		Residents	Non-residents	Residents	Non-residents		Residents	Non-residents	Residents	Non-residents	Total	Residents	Non-residents
Jan- Sept	27,305,409	5,301,334	16,338,065	1,345,917	4,320,093	30,947,183	6,133,821	18,458,674	1,466,607	4,888,081	13.3%	14.3%	13.0%
January	432,152	293,510	94,376	34,371	9,895	726,416	445,680	216,076	50,350	14,310	68.1%	51.3%	120.9%
February	488,775	322,508	122,261	33,018	10,988	763,760	452,330	252,051	44,414	14,965	56.3%	39.7%	100.4%
March	737,333	412,724	270,747	40,954	12,908	1,127,418	600,920	448,931	59,726	17,841	52.9%	45.6%	64.6%
April	1,818,043	574,747	1,065,931	58,495	118,870	2,136,711	693,752	1,215,074	76,227	151,658	17.5%	21.6%	15.4%
May	3,193,521	547,907	2,265,305	66,600	313,709	3,594,294	589,163	2,556,092	69,492	379,547	12.5%	7.2%	13.8%
June	4,469,678	668,251	2,908,891	172,918	719,618	5,052,928	742,599	3,235,272	184,183	890,874	13.0%	10.2%	13.7%
July	5,506,656	834,130	3,288,603	309,054	1,074,869	6,008,495	864,252	3,600,631	314,980	1,228,632	9.1%	3.2%	10.7%
August	6,222,628	1,009,743	3,424,303	473,528	1,315,054	6,689,015	1,071,590	3,739,679	499,432	1,378,314	7.5%	5.9%	8.0%
September	4,436,623	637,814	2,897,648	156,979	744,182	4,848,146	673,535	3,194,868	167,803	811,940	9.3%	5.9%	10.0%

**Table 1. Nights spent of residents and non-residents at hotels, similar establishments, short stay accommodation establishments and tourist campsites, by month, January – September 2022 and 2023<sup>(1)</sup>**

Reference period	2022					2023					Change 2023/2022		
	Total	Hotels and similar establishments and tourist campsites		Short stay accommodation establishments		Total	Hotels and similar establishments and tourist campsites		Short stay accommodation establishments		Total establishments		
		Residents	Non-residents	Residents	Non-residents		Residents	Non-residents	Residents	Non-residents	Total	Residents	Non-residents
Jan- Sept	118,982,423	13,030,640	78,805,822	4,503,125	22,642,836	132,530,894	14,882,085	86,774,678	5,204,191	25,669,940	11.4%	14.6%	10.8%
January	890,680	557,277	217,545	87,021	28,837	1,635,047	883,195	519,132	174,967	57,753	83.6%	64.2%	134.1%
February	1,012,437	599,310	284,812	98,704	29,611	1,651,302	850,483	606,386	148,949	45,484	63.1%	43.2%	107.3%
March	1,684,839	799,801	684,216	165,393	35,429	2,519,369	1,173,458	1,064,869	228,470	52,572	49.5%	45.2%	55.3%
April	5,002,313	1,106,436	3,237,715	186,215	471,947	6,612,820	1,491,623	4,200,781	277,371	643,045	32.2%	36.9%	30.6%
May	12,694,208	1,123,257	9,893,537	204,485	1,472,929	14,215,538	1,221,956	10,896,900	247,262	1,849,420	12.0%	10.7%	12.1%
June	19,739,970	1,589,050	14,040,646	591,083	3,519,191	22,788,977	1,742,963	15,679,103	650,557	4,716,354	15.4%	9.8%	16.1%
July	27,445,185	2,394,292	17,740,264	1,105,287	6,205,342	29,217,358	2,455,531	18,889,115	1,176,176	6,696,536	6.5%	3.8%	6.8%
August	29,824,098	3,366,163	18,102,258	1,521,173	6,834,504	31,735,319	3,516,593	19,308,521	1,661,693	7,248,512	6.4%	6.0%	6.5%
September	20,688,693	1,495,054	14,604,829	543,764	4,045,046	22,155,164	1,546,283	15,609,871	638,746	4,360,264	7.1%	7.2%	7.1%

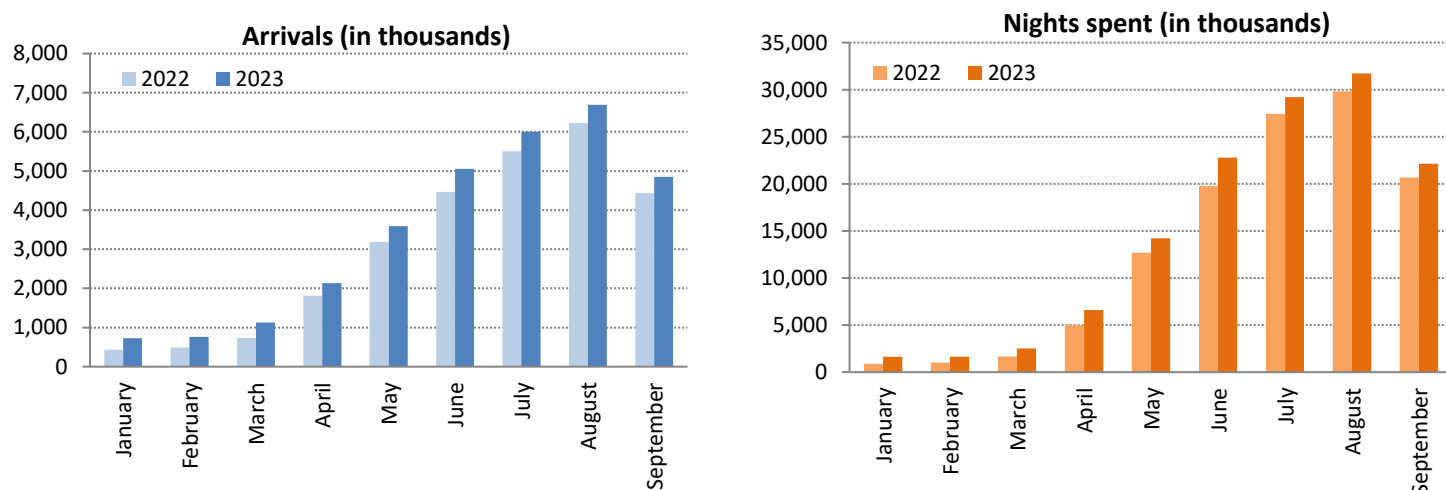
<sup>(1)</sup>Provisional data.

**Graph 1. Arrivals and nights spent at hotels, similar establishments, short stay accommodation establishments and tourist campsites, January – September 2018 – 2023<sup>(1)</sup>**



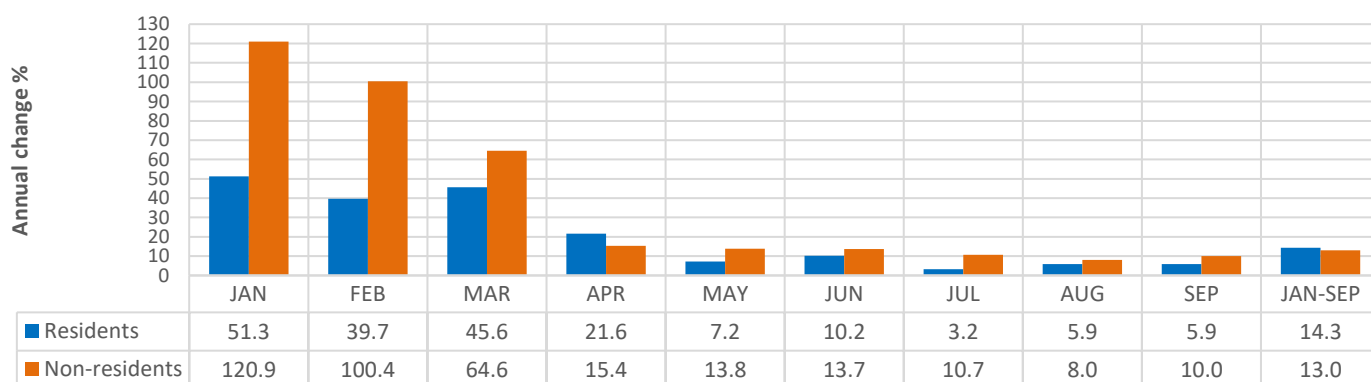
<sup>(1)</sup> Provisional data.

**Graph 2. Arrivals and nights spent at hotels, similar establishments, short stay accommodation establishments and tourist campsites, by month, January – September 2022 and 2023<sup>(1)</sup>**



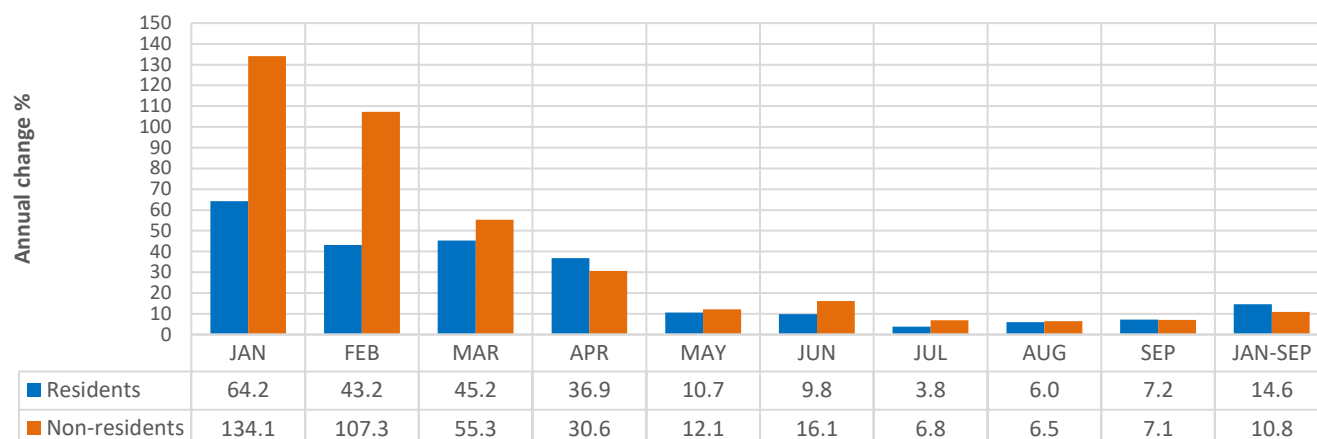
<sup>(1)</sup> Provisional data.

**Graph 3. Annual change 2023/2022 (%) of arrivals at hotels, similar establishments, short-stay accommodation establishments and tourist campsites, by month, January – September 2023<sup>(1)</sup>**



<sup>(1)</sup> Provisional data.

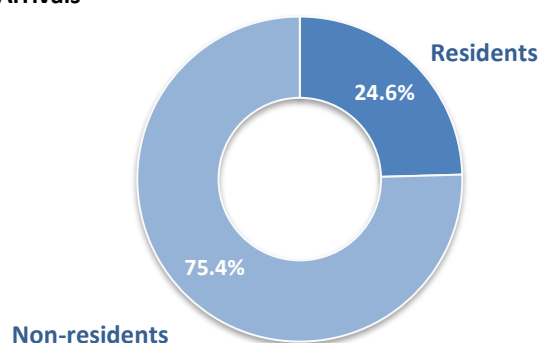
**Graph 4. Annual change 2023/2022 (%) of nights spent at hotels, similar establishments, short stay accommodation establishments and tourist campsites, by month, January – September 2023<sup>(1)</sup>**



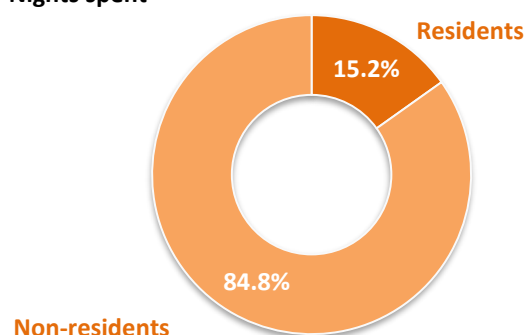
<sup>(1)</sup> Provisional data.

**Graph 5. Arrivals and nights spent by residents and non-residents at hotels, similar establishments, short stay accommodation establishments and tourist campsites, January – September 2023<sup>(1)</sup>**

**Arrivals**

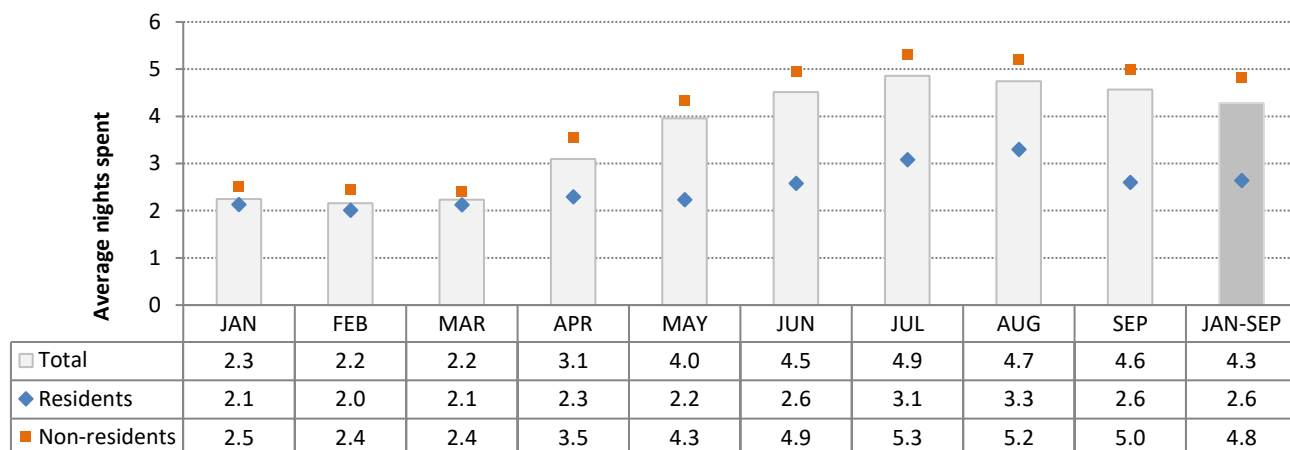


**Nights spent**



<sup>(1)</sup> Provisional data.

**Graph 6. Average nights spent per guest at hotels, similar establishments, short stay accommodation establishments and tourist campsites, by month, January – September 2023<sup>(1)</sup>**

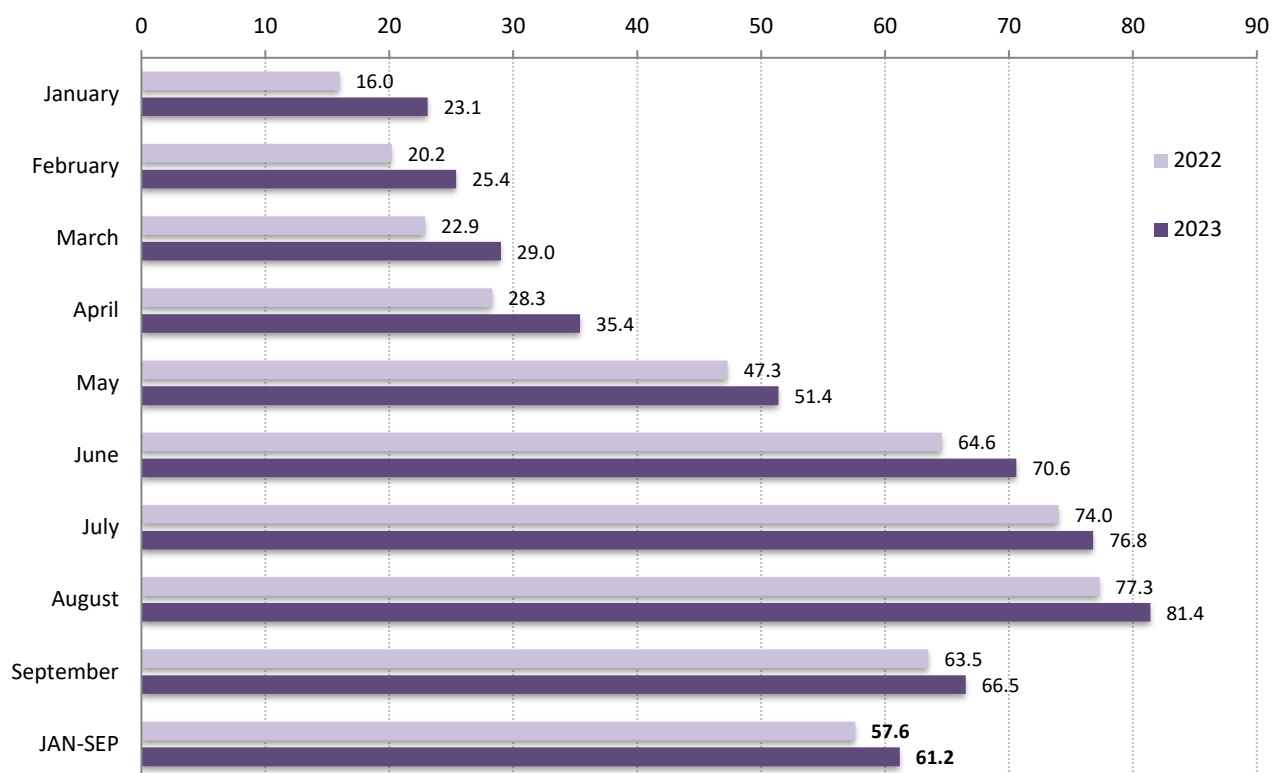


<sup>(1)</sup> Provisional data.

**Table 3. Occupancy (%) of bed-places in hotels and similar establishments, by month, January – September 2022 and 2023<sup>(1)(2)</sup>**

Month	2022	2023
January - September	57.6	61.2
January	16.0	23.1
February	20.2	25.4
March	22.9	29.0
April	28.3	35.4
May	47.3	51.4
June	64.6	70.6
July	74.0	76.8
August	77.3	81.4
September	63.5	66.5

**Graph 7. Occupancy (%) of bed-places in hotels and similar establishments, by month, January – September 2022 and 2023<sup>(1)(2)</sup>**



<sup>(1)</sup> Provisional data.

<sup>(2)</sup> The occupancy of bed-places refers to the bed-places that were in operation for each reference period.

## EXPLANATORY NOTES

<b>Arrivals and nights spent at hotels, similar establishments, tourist campsites and short-stay accommodation establishments</b>	<p>Data on arrivals and nights spent at hotels, similar establishments and tourist campsites are collected from a monthly census survey. Each establishment fills in a questionnaire, for every month that it is in operation. It is mandatory for all hotels, similar establishments and tourist campsites to participate in the survey.</p> <p>Data on the arrivals and nights spent in short-stay accommodation establishments (NACE Rev.2, 55.2), until reference year 2019, were collected through a sample survey. Since reference year 2020, due to the conditions formed by the Coronavirus disease (Covid-19), data are collected monthly, from the total of short-stay accommodation establishments in operation, for each month.</p>
<b>Legal frame</b>	The survey is conducted pursuant to Regulation 692/2011 of the European Parliament and of the Council.
<b>Reference unit</b>	Data refer to all establishments (hotels, similar establishments and tourist campsites) that are registered in the Hellenic Chamber of Hotels, which amounts approximately to 10,000 hotels and 300 campsites, while for short-stay accommodation establishments (NACE Rev. 2, 55.2), data derive from the Statistical Register of short-stay accommodation establishments (rooms for rent) of ELSTAT, which is regularly updated by data of the Ministry of Tourism and includes 27,000 establishments.
<b>Coverage</b>	The survey results refer to 100% of the total of the available bed-places.
<b>Data dissemination</b>	Final annual data are published in July of the following year.
<b>Reference period</b>	January - September 2023.
<b>Definitions</b>	<p><u>Resident</u>: Every person, regardless of citizenship, that has resided in Greece for at least a year, or has arrived in Greece with the intention to reside in the country for at least 1 year.</p> <p><u>Non-resident</u>: Every person, regardless of citizenship, that is not considered to be resident.</p> <p><u>Arrivals</u>: The arrivals at the establishments are calculated for every person separately. The data refer to the total number of persons and not to the total number of rooms that were occupied. Only the persons that had at least one overnight stay at the establishment are counted.</p> <p><u>Nights spent</u>: The nights spent are calculated for every person separately. The data refer to the total number of nights spent by every person and not to the total number of nights spent in every room.</p> <p><u>Occupancy of bed-places</u>: The monthly occupancy of bed-places is calculated on the basis of the number of the bed-places, as reported by each hotel. The rate refers to the occupancy that was accomplished, as compared with the maximum occupancy that is expected according to the available bed-places.</p> <p>The occupancy of the period is the result of the average occupancy rates of every month of the period, weighted by the bed-places that were in operation for each month.</p>
<b>Methodology</b>	<p>For hotels, similar establishments and tourist campsites (NACE Rev. 2, 55.1 &amp; 55.3) data is collected through a census survey, which is conducted on a monthly basis. Data is compiled through the collection and processing of the relevant data submitted, via a specific questionnaire, by hotels, similar establishments and tourist campsites for each month of operation. The questionnaires are mostly submitted electronically, via ELSTAT's electronic application "Xenios Zeus" or, alternatively, for establishments that this is not possible, in paper form.</p> <p>The survey is based on the Statistical Register of hotels, similar establishments and tourist campsites, which is updated during the year, so that data refer to the actual number of accommodation establishments and campsites that are in operation.</p> <p>For short stay accommodation establishments (NACE Rev. 2, 55.2), the survey design is based on ELSTAT's Statistical Register of short-stay accommodation establishments, that is regularly updated by data of the Ministry of Tourism. Until reference year 2019, data for were collected through a sample survey with reference unit the short-stay accommodation establishment, through special electronic or paper questionnaires, that were submitted for each operational month. Since reference year 2020, due to the conditions formed by the Coronavirus disease (COVID-19), data is collected monthly, from the total of short-stay accommodation establishments in operation, for each month and an additional sample survey is conducted to address non-response.</p> <p>For the short-stay accommodation survey design, a sampling method is applied. The stratification criteria are: Prefecture that the establishment is located, Degree of Urbanization (densely, intermediate and thinly populated areas), coastal or non-coastal areas, class of the establishment (1 key, 2 keys, 3 or 4 keys and rest of establishments) and size of the establishments based on the number of rooms (0-5 rooms, 6-9 rooms, 10-16 rooms, 17 rooms and over).</p> <p>Non-response to the surveys of tourist accommodation establishments is addressed as follows:</p> <ol style="list-style-type: none"> <li>1. Regular reminders are sent out to the establishments that have not responded to the survey, for submitting data.</li> <li>2. For the percentage of establishments, which despite the reminders have not responded to the survey, supplementary administrative data are used and statistical methods are applied for grossing-up of the results to the total of establishments.</li> </ol>

<b>Data collection and processing</b>	<p>For the compilation of the provisional data of arrivals and nights spent for the reference period, both data collected by the survey and administrative data sources were used. Specifically,</p> <ul style="list-style-type: none"> <li>a. the establishments in operation were identified on the basis of administrative data for the reference period.</li> <li>b. a survey was conducted on the afore-mentioned establishments</li> <li>c. for the accommodation establishments that were in operation but did not respond to the survey, statistical methods were used for addressing non-response by grossing-up the collected data to the 100% of the total of the available bed-places.</li> </ul> <p>It is noted that arrivals and nights spent of establishments that were in operation for special purposes such as the accommodation of people residing permanently in tourist accommodation establishments, refugees, etc., are not recorded, as they are not in the scope of the survey (Regulation EU 692/2011).</p>
<b>References</b>	<p>More information on the survey results on hotels, similar establishments and tourist campsites at a more detailed geographical level is available on the website of ELSTAT at: <a href="http://www.statistics.gr/en/statistics/-/publication/STO12/">http://www.statistics.gr/en/statistics/-/publication/STO12/</a></p>