



## PRESS RELEASE

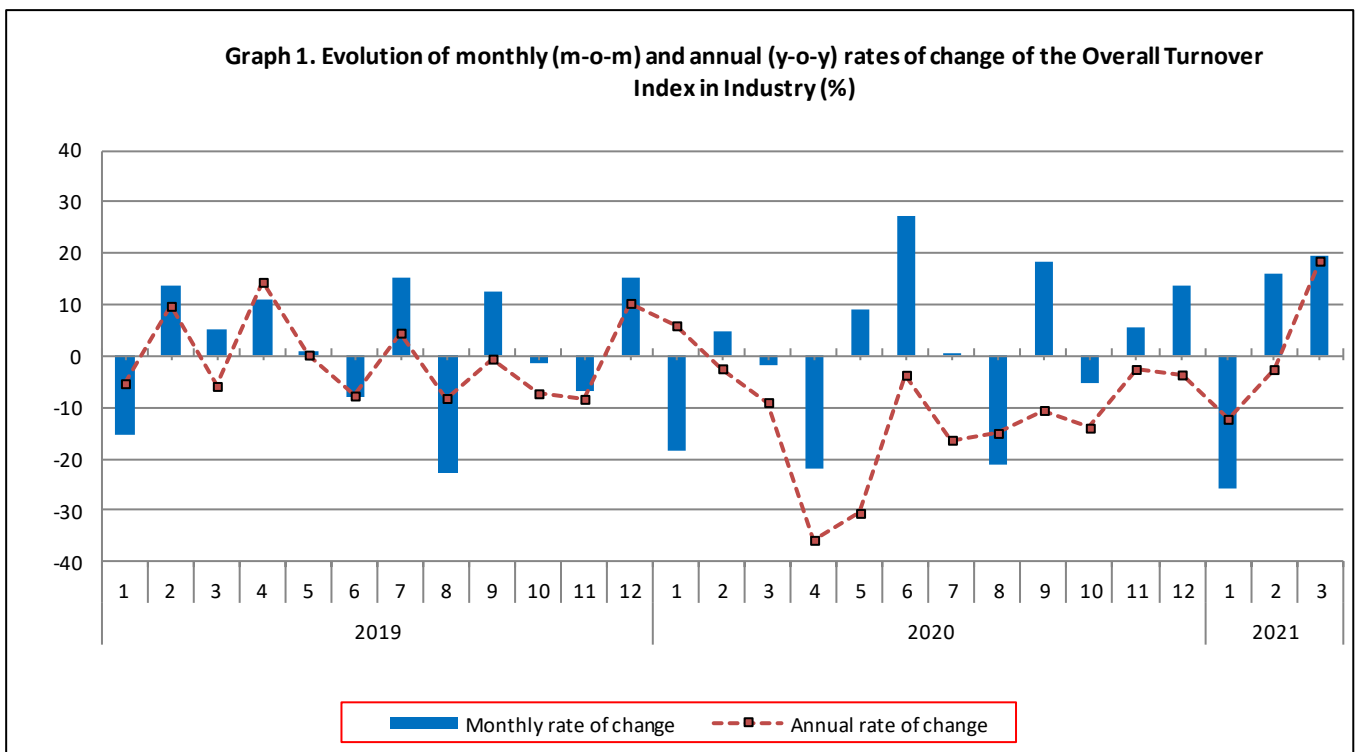
### TURNOVER INDEX IN INDUSTRY: March 2021, y-o-y increase of 18.6%

The Hellenic Statistical Authority announces the Turnover Index in Industry with base year 2015=100.0 for March 2021, on the basis of provisional data, which is as follows:

The Overall Turnover Index in Industry (both domestic and non-domestic market) in March 2021 recorded an increase of 18.6% compared with the corresponding index of March 2020. The Overall Turnover Index in Industry in March 2020 decreased by 9.0% compared with the corresponding index in March 2019 (Table 1).

The Overall Turnover Index in Industry in March 2021, compared with February 2021, recorded an increase of 19.5% (Table 6).

The average Overall Turnover Index in Industry for the 12-month period from April 2020 to March 2021 decreased by 11.4%, compared with the corresponding index of the 12-month period from April 2019 to March 2020. The average Overall Turnover Index in Industry for the 12-month period from April 2019 to March 2020 decreased by 0.9% compared with the corresponding index of the 12-month period from April 2018 to March 2019 (Table 13).



#### Information for methodological issues:

Division of Business Statistics  
Section of Manufacture-Construction Indices and Industrial Products  
Head of the Section : Diamantaki Aikaterini  
Tel: +30 213 135 2056  
E-mail: [a.diamantaki@statistics.gr](mailto:a.diamantaki@statistics.gr)

#### Information for data provision:

Tel: +30 213 135 2022, 2308, 2310  
E-mail: [data.dissem@statistics.gr](mailto:data.dissem@statistics.gr)

## Evolution of the Overall Turnover Index in Industry in March 2021

### I. Annual changes of the Overall Turnover Index in Industry: March 2021/ March 2020

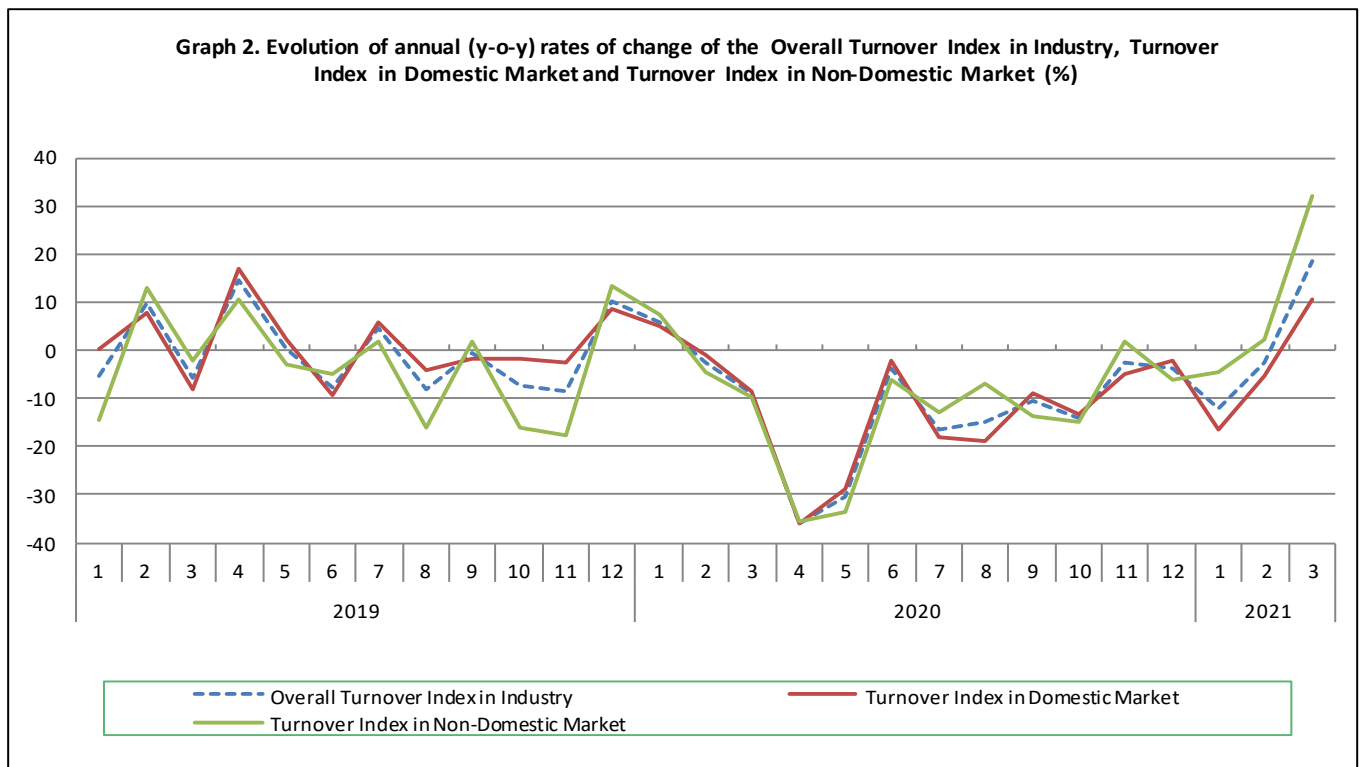
The 18.6% increase in the Overall Turnover Index in Industry in March 2021, compared with the corresponding index in March 2020, was due to the following:

#### 1. Changes in the sub-indices of the industrial sections (Table 1):

- The Turnover Index in Manufacturing increased by 18.6%. The increase was mainly the result of the annual changes of the sub-indices in the following 2-digit divisions: electrical equipment, coke and refined petroleum products, basic metals, fabricated metal products, except machinery and equipment.
- The Turnover Index in Mining and quarrying increased by 16.2%. The increase was the result of the annual changes of the sub-indices in the following 2-digit divisions: mining of metal ores, other mining and quarrying products.

#### 2. Changes in the sub-indices in domestic and non-domestic markets:

- The Turnover Index in Industry in non-domestic market increased by 32.2% (Table 3).
- The Turnover Index in Industry in domestic market increased by 10.6% (Table 2).



### II. Annual changes of the Turnover Index in Industry in Domestic Market: March 2021/ March 2020

The 10.6% increase of the Turnover Index in Industry in domestic market in March 2021, compared with March 2020, is due to the following annual changes in the sub-indices of the following industrial sections (Table 2):

- The Turnover Index in Mining and quarrying increased by 14.2%. The increase was the result of the annual change of the sub-index in the following 2-digit division: other mining and quarrying products.
- The Turnover Index in Manufacturing increased by 10.6%. The increase was mainly the result of the annual changes of the sub-indices in the following 2-digit divisions: electrical equipment, basic metals, fabricated metal products, except machinery and equipment, coke and refined petroleum products.

### III. Annual changes of the Turnover Index in Industry in Non-Domestic Market: March 2021/ March 2020

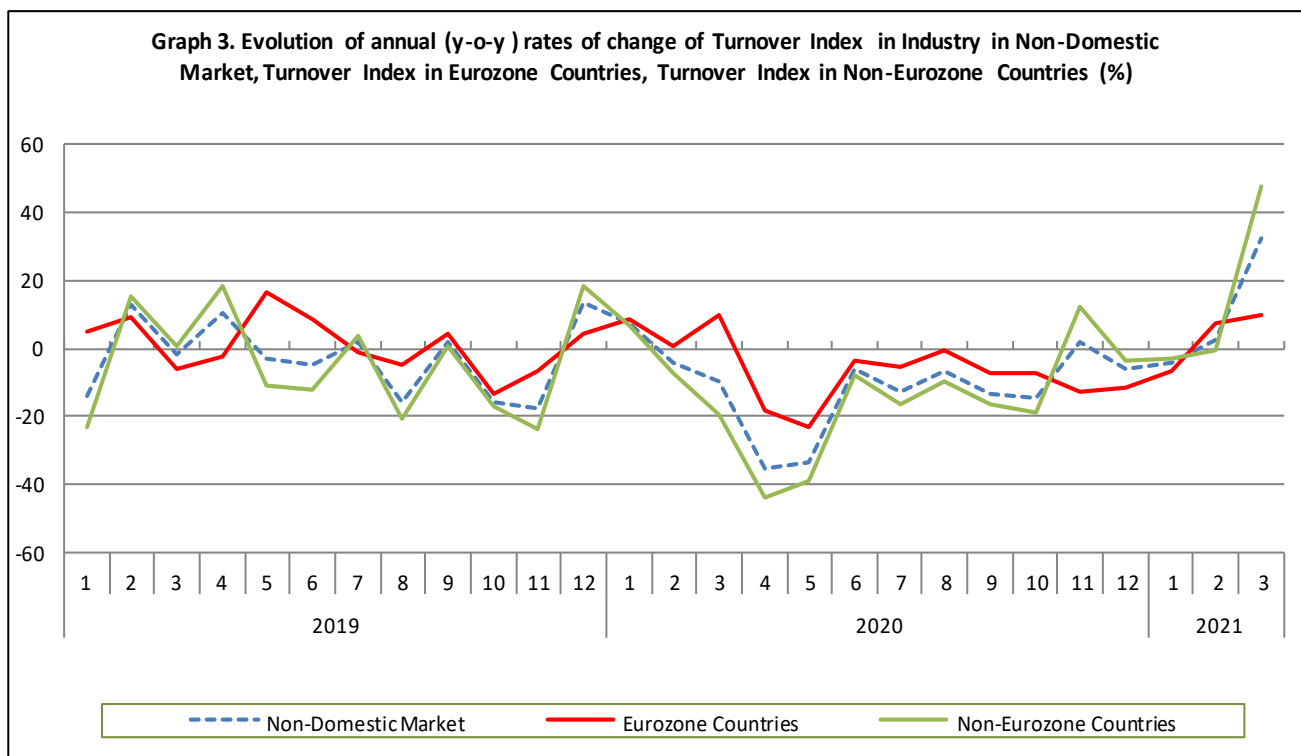
The 32.2% increase of the Turnover Index in Industry in Non-Domestic market in March 2021, compared with March 2020, was due to the following:

#### 1. Changes in the sub-indices of the industrial sections (Table 3):

- The Turnover Index in Manufacturing increased by 32.5%. The increase was mainly the result of the annual changes of the sub-indices in the following 2-digit divisions: coke and refined petroleum products, electrical equipment, tobacco products, basic metals.
- The Turnover Index in Mining and quarrying increased by 17.6%. The increase was the result of the annual changes of the sub-indices in the following 2-digit divisions: mining of metal ores, other mining and quarrying products.

#### 2. Changes in the sub-indices in Eurozone and Non-Eurozone countries:

- The Turnover Index in Industry in non-Eurozone countries increased by 47.7% (Table 5).
- The Turnover Index in Industry in Eurozone countries increased by 10.1% (Table 4).



### IV. Monthly changes of the Overall Turnover Index in Industry: March 2021/ February 2021

The 19.5% increase of the Overall Turnover Index in Industry in March 2021, compared with the corresponding index in February 2021, was due to the following:

#### 1. Changes in the sub-indices of industrial sections (Table 6):

- The Turnover Index in Mining and quarrying increased by 34.5%.
- The Turnover Index in Manufacturing increased by 19.4%.

#### 2. Changes in the sub-indices in domestic and non-domestic market:

- The Turnover Index in Industry in non-domestic market increased by 25.7% (Table 8).
- The Turnover Index in Industry in domestic market increased by 15.5% (Table 7).

**Table 1. Annual rates of change of the Turnover Index in Industry: Total Market**

Base year: 2015=100.0

Code	Division	Weights	March			Rate of change (%)	
			2021*	2020*	2019	2021/2020	2020/2019
<b>OVERALL INDEX</b>			<b>120.99</b>	<b>102.05</b>	<b>112.12</b>	<b>18.6</b>	<b>-9.0</b>
<b>B</b>	<b>MINING AND QUARRYING</b>	<b>100.00</b>	<b>108.78</b>	<b>93.59</b>	<b>104.32</b>	<b>16.2</b>	<b>-10.3</b>
05-06-09	Mining of coal and lignite - Extraction of crude petroleum and natural gas - Mining support service activities	21.19	18.53	21.99	41.94	-15.7	-47.6
07	Mining of metal ores	17.56	227.51	188.02	179.34	21.0	4.8
08	Other mining and quarrying products	61.25	105.96	91.29	104.38	16.1	-12.5
<b>C</b>	<b>MANUFACTURING</b>	<b>100.00</b>	<b>121.15</b>	<b>102.17</b>	<b>112.22</b>	<b>18.6</b>	<b>-9.0</b>
10	Food	23.39	110.95	110.58	101.61	0.3	8.8
11	Beverages	3.57	87.79	81.28	110.06	8.0	-26.2
12	Tobacco products	1.19	157.78	117.60	111.59	34.2	5.4
13	Textiles	1.28	124.86	101.06	118.96	23.6	-15.0
14	Wearing apparel	1.80	55.60	49.24	89.69	12.9	-45.1
15	Leather and related products	0.34	58.89	70.00	119.17	-15.9	-41.3
16	Wood and products of wood and cork, except furniture	0.72	103.23	98.19	105.57	5.1	-7.0
17	Paper and paper products	2.44	113.56	135.78	110.45	-16.4	22.9
18	Printing and reproduction of recorded products	1.17	85.91	93.23	96.57	-7.9	-3.5
19	Coke and refined petroleum products	28.73	107.53	72.49	110.38	48.3	-34.3
20	Chemicals and chemical products	4.43	155.16	147.67	141.25	5.1	4.5
21	Basic pharmaceutical products and pharmaceutical preparations	3.67	184.04	183.63	139.64	0.2	31.5
22	Rubber and plastic products	3.47	138.21	114.96	112.29	20.2	2.4
23	Other non-metallic mineral products	3.31	120.07	100.38	118.81	19.6	-15.5
24	Basic metals	7.19	164.03	127.59	133.23	28.6	-4.2
25	Fabricated metal products, except machinery and equipment	4.51	117.16	94.80	102.21	23.6	-7.2
26	Computers, electronic and optical products	0.78	193.99	161.55	121.63	20.1	32.8
27	Electrical equipment	2.65	197.12	123.29	119.10	59.9	3.5
28	Machinery and equipment n.e.c.	1.56	126.92	96.36	109.01	31.7	-11.6
29	Motor vehicles, trailers and semi-trailers	0.23	103.75	168.83	106.93	-38.6	57.9
30	Other transport equipment	0.52	72.64	61.90	101.00	17.4	-38.7
31	Furniture	0.97	98.53	100.82	117.12	-2.3	-13.9
32	Other manufacturing	0.66	92.03	76.31	102.30	20.6	-25.4
33	Repair and installation of machinery and equipment	1.42	113.30	97.63	110.54	16.0	-11.7
<b>MAIN INDUSTRIAL GROUPINGS</b>							
1	Energy	28.57	106.86	72.14	109.78	48.1	-34.3
2	Intermediate goods	28.29	142.41	120.29	120.29	18.4	0.0
3	Capital goods	7.00	121.73	102.48	108.59	18.8	-5.6
4	Consumer Durables	1.86	101.51	85.16	99.73	19.2	-14.6
5	Consumer Non-Durables	34.28	115.99	112.77	108.72	2.9	3.7

\* Provisional data

Note: The indices and the percentage changes are rounded up to two and one decimal digits, respectively, when published.

**Table 2. Annual rates of change of the Turnover Index in Industry: Domestic Market**

Base year: 2015=100.0

Code	Division	Weights	March			Rate of change (%)	
			2021*	2020*	2019	2021/2020	2020/2019
<b>OVERALL INDEX</b>			<b>107.41</b>	<b>97.12</b>	<b>106.16</b>	<b>10.6</b>	<b>-8.5</b>
<b>B</b>	<b>MINING AND QUARRYING</b>	<b>100.00</b>	<b>74.40</b>	<b>65.17</b>	<b>67.71</b>	<b>14.2</b>	<b>-3.7</b>
05-06-09	Mining of coal and lignite - Extraction of crude petroleum and natural gas - Mining support service activities	31.66	21.91	25.99	49.58	-15.7	-47.6
07	Mining of metal ores	12.83	94.98	101.85	74.76	-6.7	36.2
08	Other mining and quarrying products	55.50	99.58	79.04	76.42	26.0	3.4
<b>C</b>	<b>MANUFACTURING</b>	<b>100.00</b>	<b>107.79</b>	<b>97.49</b>	<b>106.61</b>	<b>10.6</b>	<b>-8.5</b>
10	Food	28.50	102.17	103.33	96.90	-1.1	6.6
11	Beverages	4.86	84.35	77.38	107.91	9.0	-28.3
12	Tobacco products	0.51	209.43	167.88	152.98	24.8	9.7
13	Textiles	1.11	97.88	72.97	103.33	34.1	-29.4
14	Wearing apparel	1.77	46.20	39.12	83.14	18.1	-52.9
15	Leather and related products	0.41	55.25	72.34	116.92	-23.6	-38.1
16	Wood and products of wood and cork, except furniture	0.96	95.89	92.82	100.30	3.3	-7.5
17	Paper and paper products	3.12	109.01	135.66	107.40	-19.6	26.3
18	Printing and reproduction of recorded products	1.63	74.60	74.33	92.83	0.4	-19.9
19	Coke and refined petroleum products	24.90	72.97	64.28	99.32	13.5	-35.3
20	Chemicals and chemical products	4.90	156.39	154.58	147.88	1.2	4.5
21	Basic pharmaceutical products and pharmaceutical preparations	3.85	176.28	168.07	115.99	4.9	44.9
22	Rubber and plastic products	3.31	135.78	105.61	103.93	28.6	1.6
23	Other non-metallic mineral products	3.31	123.45	103.86	117.10	18.9	-11.3
24	Basic metals	3.49	194.45	124.57	145.85	56.1	-14.6
25	Fabricated metal products, except machinery and equipment	4.25	133.78	104.83	117.30	27.6	-10.6
26	Computers, electronic and optical products	0.40	98.86	95.26	93.37	3.8	2.0
27	Electrical equipment	2.24	218.67	133.99	128.82	63.2	4.0
28	Machinery and equipment n.e.c.	1.46	132.76	96.49	102.50	37.6	-5.9
29	Motor vehicles, trailers and semi-trailers	0.27	108.85	189.52	108.08	-42.6	75.3
30	Other transport equipment	0.58	58.19	48.80	108.39	19.2	-55.0
31	Furniture	1.35	89.67	96.10	111.15	-6.7	-13.5
32	Other manufacturing	0.88	85.34	70.08	96.03	21.8	-27.0
33	Repair and installation of machinery and equipment	1.92	119.91	103.28	112.38	16.1	-8.1
<b>MAIN INDUSTRIAL GROUPINGS</b>							
1	Energy	24.89	72.48	63.96	98.69	13.3	-35.2
2	Intermediate goods	25.73	141.23	118.38	117.21	19.3	1.0
3	Capital goods	7.19	124.82	105.39	116.25	18.4	-9.3
4	Consumer Durables	2.31	89.98	79.05	98.66	13.8	-19.9
5	Consumer Non-Durables	39.88	105.25	103.67	102.31	1.5	1.3

\* Provisional data

Note: The indices and the percentage changes are rounded up to two and one decimal digits, respectively, when published.

**Table 3. Annual rates of change of the Turnover Index in Industry: Non-Domestic Market**

Base year: 2015=100.0

Code	Division	Weights	March			Rate of change (%)	
			2021*	2020*	2019	2021/2020	2020/2019
<b>OVERALL INDEX</b>			<b>147.75</b>	<b>111.77</b>	<b>123.85</b>	<b>32.2</b>	<b>-9.8</b>
<b>B</b>	<b>MINING AND QUARRYING</b>	<b>100.00</b>	<b>153.65</b>	<b>130.68</b>	<b>152.09</b>	<b>17.6</b>	<b>-14.1</b>
05-06-09	Mining of coal and lignite - Extraction of crude petroleum and natural gas - Mining support service activities	7.53	0.00	0.00	0.00	-	-
07	Mining of metal ores	23.74	321.04	248.83	253.13	29.0	-1.7
08	Other mining and quarrying products	68.74	112.68	104.19	133.85	8.1	-22.2
<b>C MANUFACTURING</b>		<b>100.00</b>	<b>147.64</b>	<b>111.44</b>	<b>123.36</b>	<b>32.5</b>	<b>-9.7</b>
10	Food	13.27	148.33	141.46	121.67	4.9	16.3
11	Beverages	1.01	120.57	118.52	130.58	1.7	-9.2
12	Tobacco products	2.53	136.96	97.33	94.90	40.7	2.6
13	Textiles	1.61	161.88	139.61	140.40	16.0	-0.6
14	Wearing apparel	1.86	73.30	68.30	102.04	7.3	-33.1
15	Leather and related products	0.19	74.52	59.93	128.81	24.4	-53.5
16	Wood and products of wood and cork, except furniture	0.24	161.42	140.79	147.34	14.7	-4.4
17	Paper and paper products	1.11	138.87	136.49	127.44	1.7	7.1
18	Printing and reproduction of recorded products	0.26	226.77	328.68	143.11	-31.0	129.7
19	Coke and refined petroleum products	36.32	154.48	83.65	125.42	84.7	-33.3
20	Chemicals and chemical products	3.50	151.74	128.55	122.90	18.0	4.6
21	Basic pharmaceutical products and pharmaceutical preparations	3.30	201.96	219.58	194.27	-8.0	13.0
22	Rubber and plastic products	3.79	142.42	131.17	126.77	8.6	3.5
23	Other non-metallic mineral products	3.31	113.37	93.47	122.21	21.3	-23.5
24	Basic metals	14.54	149.56	129.03	127.22	15.9	1.4
25	Fabricated metal products, except machinery and equipment	5.03	89.32	78.01	76.93	14.5	1.4
26	Computers, electronic and optical products	1.52	243.49	196.05	136.33	24.2	43.8
27	Electrical equipment	3.44	169.26	109.45	106.53	54.6	2.7
28	Machinery and equipment n.e.c.	1.76	117.34	96.14	119.70	22.0	-19.7
29	Motor vehicles, trailers and semi-trailers	0.14	83.86	88.27	102.43	-5.0	-13.8
30	Other transport equipment	0.40	113.83	99.23	79.93	14.7	24.1
31	Furniture	0.21	211.38	160.93	193.19	31.3	-16.7
32	Other manufacturing	0.22	143.88	124.60	150.89	15.5	-17.4
33	Repair and installation of machinery and equipment	0.43	55.29	48.03	94.37	15.1	-49.1
<b>MAIN INDUSTRIAL GROUPINGS</b>							
1	Energy	35.82	153.92	83.34	124.97	84.7	-33.3
2	Intermediate goods	33.33	144.21	123.19	124.96	17.1	-1.4
3	Capital goods	6.62	115.14	96.25	92.21	19.6	4.4
4	Consumer Durables	0.98	155.19	113.58	104.67	36.6	8.5
5	Consumer Non-Durables	23.25	152.28	143.53	130.37	6.1	10.1

\* Provisional data

Note: The indices and the percentage changes are rounded up to two and one decimal digits, respectively, when published.

**Table 4. Annual rates of change of the Turnover Index in Industry: Eurozone Countries**

Base year: 2015=100.0

Code	Sections and main groupings	March			Rate of change (%)	
		2021*	2020*	2019	2021/2020	2020/2019
<b>OVERALL INDEX</b>		<b>146.09</b>	<b>132.72</b>	<b>121.17</b>	<b>10.1</b>	<b>9.5</b>
<b>INDUSTRIAL SECTIONS</b>						
<b>B</b>	MINING AND QUARRYING	114.48	124.29	143.09	-7.9	-13.1
<b>C</b>	MANUFACTURING	146.73	132.89	120.73	10.4	10.1
<b>MAIN INDUSTRIAL GROUPINGS</b>						
<b>1</b>	Energy	121.30	104.56	75.43	16.0	38.6
<b>2</b>	Intermediate goods	148.06	136.73	131.55	8.3	3.9
<b>3</b>	Capital goods	144.05	107.06	143.04	34.6	-25.2
<b>4</b>	Consumer Durables	230.23	144.40	177.08	59.4	-18.5
<b>5</b>	Consumer Non-Durables	158.52	151.15	136.06	4.9	11.1

\* Provisional data

**Table 5. Annual rates of change of the Turnover Index in Industry: Non-Eurozone Countries**

Base year: 2015=100.0

Code	Sections and main groupings	March			Rate of change (%)	
		2021*	2020*	2019	2021/2020	2020/2019
<b>OVERALL INDEX</b>		<b>148.63</b>	<b>100.63</b>	<b>125.28</b>	<b>47.7</b>	<b>-19.7</b>
<b>INDUSTRIAL SECTIONS</b>						
<b>B</b>	MINING AND QUARRYING	179.37	134.88	158.00	33.0	-14.6
<b>C</b>	MANUFACTURING	148.13	100.08	124.75	48.0	-19.8
<b>MAIN INDUSTRIAL GROUPINGS</b>						
<b>1</b>	Energy	163.31	77.24	139.23	111.4	-44.5
<b>2</b>	Intermediate goods	141.71	114.37	120.67	23.9	-5.2
<b>3</b>	Capital goods	105.35	92.58	74.98	13.8	23.5
<b>4</b>	Consumer Durables	103.37	92.30	54.67	12.0	68.8
<b>5</b>	Consumer Non-Durables	146.21	136.12	124.84	7.4	9.0

\* Provisional data

Note: The indices and the percentage changes are rounded up to two and one decimal digits, respectively, when published.

**Table 6. Monthly rate of change of the Turnover Index in Industry: Total Market**

Base year: 2015=100.0

Code	Sections and main groupings	March 2021*	February 2021**	Rate of change (%) Mar. 2021/ Feb. 2021
<b>OVERALL INDEX</b>		<b>120.99</b>	<b>101.23</b>	<b>19.5</b>
<b>INDUSTRIAL SECTIONS</b>				
B	MINING AND QUARRYING	108.78	80.90	34.5
C	MANUFACTURING	121.15	101.51	19.4
<b>MAIN INDUSTRIAL GROUPINGS</b>				
1	Energy	106.86	84.63	26.3
2	Intermediate goods	142.41	115.06	23.8
3	Capital goods	121.73	96.43	26.2
4	Consumer Durables	101.51	84.27	20.5
5	Consumer Non-Durables	115.99	105.56	9.9

**Table 7. Monthly rate of change of the Turnover Index in Industry: Domestic Market**

Base year: 2015=100.0

Code	Sections and main groupings	March 2021*	February 2021**	Rate of change (%) Mar. 2021/ Feb. 2021
<b>OVERALL INDEX</b>		<b>107.41</b>	<b>92.96</b>	<b>15.5</b>
<b>INDUSTRIAL SECTIONS</b>				
B	MINING AND QUARRYING	74.40	64.19	15.9
C	MANUFACTURING	107.79	93.29	15.5
<b>MAIN INDUSTRIAL GROUPINGS</b>				
1	Energy	72.48	68.63	5.6
2	Intermediate goods	141.23	112.74	25.3
3	Capital goods	124.82	98.75	26.4
4	Consumer Durables	89.98	74.85	20.2
5	Consumer Non-Durables	105.25	95.39	10.3

**Table 8. Monthly rate of change of the Turnover Index in Industry: Non-Domestic Market**

Base year: 2015=100.0

Code	Sections and main groupings	March 2021*	February 2021**	Rate of change (%) Mar. 2021/ Feb. 2021
<b>OVERALL INDEX</b>		<b>147.75</b>	<b>117.53</b>	<b>25.7</b>
<b>INDUSTRIAL SECTIONS</b>				
B	MINING AND QUARRYING	153.65	102.70	49.6
C	MANUFACTURING	147.64	117.79	25.3
<b>MAIN INDUSTRIAL GROUPINGS</b>				
1	Energy	153.92	106.53	44.5
2	Intermediate goods	144.21	118.59	21.6
3	Capital goods	115.14	91.46	25.9
4	Consumer Durables	155.19	128.13	21.1
5	Consumer Non-Durables	152.28	139.95	8.8

\* Provisional data \*\* Revised data

Note: The indices and the percentage changes are rounded up to two and one decimal digits, respectively, when published.



**Table 9. Monthly rate of change of the Turnover Index in Industry: Eurozone Countries**

Base year: 2015=100.0

Code	Sections and main groupings	March 2021*	February 2021**	Rate of change (%) Mar. 2021/ Feb. 2021
<b>OVERALL INDEX</b>		<b>146.09</b>	<b>128.31</b>	<b>13.9</b>
<b>INDUSTRIAL SECTIONS</b>				
<b>B</b>	MINING AND QUARRYING	114.48	140.62	-18.6
<b>C</b>	MANUFACTURING	146.73	128.06	14.6
<b>MAIN INDUSTRIAL GROUPINGS</b>				
<b>1</b>	Energy	121.30	93.93	29.1
<b>2</b>	Intermediate goods	148.06	126.44	17.1
<b>3</b>	Capital goods	144.05	110.49	30.4
<b>4</b>	Consumer Durables	230.23	188.76	22.0
<b>5</b>	Consumer Non-Durables	158.52	154.96	2.3

\* Provisional data \*\* Revised data

**Table 10. Monthly rate of change of the Turnover Index in Industry: Non-Eurozone Countries**

Base year: 2015=100.0

Code	Sections and main groupings	March 2021*	February 2021**	Rate of change (%) Mar. 2021/ Feb. 2021
<b>OVERALL INDEX</b>		<b>148.63</b>	<b>111.81</b>	<b>32.9</b>
<b>INDUSTRIAL SECTIONS</b>				
<b>B</b>	MINING AND QUARRYING	179.37	77.81	130.5
<b>C</b>	MANUFACTURING	148.13	112.36	31.8
<b>MAIN INDUSTRIAL GROUPINGS</b>				
<b>1</b>	Energy	163.31	110.16	48.2
<b>2</b>	Intermediate goods	141.71	113.48	24.9
<b>3</b>	Capital goods	105.35	85.01	23.9
<b>4</b>	Consumer Durables	103.37	86.26	19.8
<b>5</b>	Consumer Non-Durables	146.21	125.33	16.7

\* Provisional data \*\* Revised data

Note: The indices and the percentage changes are rounded up to two and one decimal digits, respectively, when published.

**Table 11. Evolution of the Turnover Index in Industry (y-o-y changes): Total Market**

Base year: 2015=100.0

Year and month	Overall Index (Total Market)		Turnover Index in Industry in Domestic Market		Turnover Index in Industry in Non-Domestic Market	
	Index	Annual rate of change (%)	Index	Annual rate of change (%)	Index	Annual rate of change (%)
<b>2020*:</b> 3	102.05	-9.0	97.12	-8.5	111.77	-9.8
4	79.79	-35.8	74.75	-35.9	89.71	-35.6
5	87.00	-30.6	85.16	-28.8	90.61	-33.7
6	110.84	-3.7	108.89	-2.2	114.68	-6.3
7	110.88	-16.3	107.87	-18.1	116.81	-12.9
8	87.36	-15.0	86.44	-18.7	89.18	-6.8
9	103.35	-10.5	100.76	-8.8	108.47	-13.5
10	97.97	-14.0	96.37	-13.4	101.12	-14.9
11	103.26	-2.5	99.20	-4.9	111.25	1.9
12	117.58	-3.6	115.10	-2.2	122.45	-6.1
<b>2021*:</b> 1	87.15	-12.2	80.89	-16.5	99.49	-4.4
2	101.23	-2.6	92.96	-5.4	117.53	2.2
3	120.99	18.6	107.41	10.6	147.75	32.2

\*Provisional data

**Table 12. Evolution of the Turnover Index in Industry (y-o-y changes): Non-Domestic Market**

Base year: 2015=100.0

Year and month	Overall Index (Non-Domestic Market)		Turnover Index in Industry in Eurozone Countries		Turnover Index in Industry in Non-Eurozone Countries	
	Index	Annual rate of change (%)	Index	Annual rate of change (%)	Index	Annual rate of change (%)
<b>2020*:</b> 3	111.77	-9.8	132.72	9.5	100.63	-19.7
4	89.71	-35.6	107.87	-18.2	80.06	-44.1
5	90.61	-33.7	106.04	-23.2	82.41	-39.3
6	114.68	-6.3	132.86	-3.7	105.02	-7.9
7	116.81	-12.9	120.84	-5.7	114.67	-16.5
8	89.18	-6.8	91.33	-0.4	88.05	-9.9
9	108.47	-13.5	112.26	-7.1	106.46	-16.7
10	101.12	-14.9	105.89	-7.3	98.59	-18.7
11	111.25	1.9	112.54	-12.6	110.56	12.1
12	122.45	-6.1	109.21	-11.5	129.49	-3.5
<b>2021*:</b> 1	99.49	-4.4	108.16	-6.8	94.88	-2.8
2	117.53	2.2	128.31	7.3	111.81	-0.6
3	147.75	32.2	146.09	10.1	148.63	47.7

\*Provisional data

Note: The indices and the percentage changes are rounded up to two and one decimal digits, respectively, when published.

**Table 13. Average indices and rates of change (%) of the 12-month periods of Turnover Index in Industry: Total Market**

Base year: 2015=100.0

Code	Division	Average Indices of 12-month periods			Rate of change (%)	
		Apr. 2020- Mar. 2021*	Apr. 2019- Mar. 2020*	Apr. 2018- Mar. 2019	2021/2020	2020/2019
<b>OVERALL INDEX</b>		<b>100.62</b>	<b>113.53</b>	<b>114.51</b>	<b>-11.4</b>	<b>-0.9</b>
<b>B</b>	<b>MINING AND QUARRYING</b>	<b>99.55</b>	<b>107.73</b>	<b>108.60</b>	<b>-7.6</b>	<b>-0.8</b>
<b>05-06-09</b>	Mining of coal and lignite - Extraction of crude petroleum and natural gas - Mining support service activities	25.58	78.00	99.48	-67.2	-21.6
<b>07</b>	Mining of metal ores	187.01	167.45	143.91	11.7	16.4
<b>08</b>	Other mining and quarrying products	100.07	100.89	101.64	-0.8	-0.7
<b>C</b>	<b>MANUFACTURING</b>	<b>100.63</b>	<b>113.61</b>	<b>114.59</b>	<b>-11.4</b>	<b>-0.9</b>
<b>10</b>	Food	102.68	105.96	101.41	-3.1	4.5
<b>11</b>	Beverages	96.50	115.55	114.37	-16.5	1.0
<b>12</b>	Tobacco products	136.66	129.39	121.57	5.6	6.4
<b>13</b>	Textiles	99.54	106.85	105.30	-6.8	1.5
<b>14</b>	Wearing apparel	61.03	90.16	95.95	-32.3	-6.0
<b>15</b>	Leather and related products	46.30	84.75	87.71	-45.4	-3.4
<b>16</b>	Wood and products of wood and cork, except furniture	100.06	109.31	103.90	-8.5	5.2
<b>17</b>	Paper and paper products	110.13	117.47	112.41	-6.3	4.5
<b>18</b>	Printing and reproduction of recorded products	87.21	96.06	96.02	-9.2	0.0
<b>19</b>	Coke and refined petroleum products	77.12	115.74	128.17	-33.4	-9.7
<b>20</b>	Chemicals and chemical products	121.00	119.50	112.58	1.3	6.1
<b>21</b>	Basic pharmaceutical products and pharmaceutical preparations	170.11	147.85	123.51	15.1	19.7
<b>22</b>	Rubber and plastic products	112.22	107.99	103.20	3.9	4.6
<b>23</b>	Other non-metallic mineral products	103.47	110.77	108.12	-6.6	2.5
<b>24</b>	Basic metals	124.49	124.64	137.22	-0.1	-9.2
<b>25</b>	Fabricated metal products, except machinery and equipment	100.26	100.63	101.03	-0.4	-0.4
<b>26</b>	Computers, electronic and optical products	160.53	169.83	130.65	-5.5	30.0
<b>27</b>	Electrical equipment	135.12	127.94	117.43	5.6	9.0
<b>28</b>	Machinery and equipment n.e.c.	107.83	109.44	105.88	-1.5	3.4
<b>29</b>	Motor vehicles, trailers and semi-trailers	103.00	118.64	92.92	-13.2	27.7
<b>30</b>	Other transport equipment	62.78	60.70	68.04	3.4	-10.8
<b>31</b>	Furniture	101.96	115.50	113.12	-11.7	2.1
<b>32</b>	Other manufacturing	87.26	104.29	99.80	-16.3	4.5
<b>33</b>	Repair and installation of machinery and equipment	97.95	98.58	92.89	-0.6	6.1
<b>MAIN INDUSTRIAL GROUPINGS</b>						
<b>1</b>	Energy	76.77	115.56	127.98	-33.6	-9.7
<b>2</b>	Intermediate goods	114.56	115.40	115.14	-0.7	0.2
<b>3</b>	Capital goods	104.55	106.43	100.54	-1.8	5.9
<b>4</b>	Consumer Durables	97.99	107.40	104.10	-8.8	3.2
<b>5</b>	Consumer Non-Durables	108.32	112.08	106.17	-3.4	5.6

\*Provisional data

Note: The indices and the percentage changes are rounded up to two and one decimal digits, respectively, when published.

## METHODOLOGICAL NOTES

<b>Generally</b>	The Industrial Turnover Index is an indicator of an enterprise's business cycle showing the monthly evolution of the market of goods and services in industry. The first compilation of the Turnover Index was completed by the Hellenic Statistical Authority in 2006, with base year 2000=100.0 and is compiled from 2000 onwards.
<b>Purpose of the index</b>	The purpose of this index is to measure the monthly activity of the industrial sector in terms of value. Turnover comprises the totals invoiced by the observation units during the reference period and corresponds to the market sales of goods or services supplied to third parties. The purposes and the characteristics of the Turnover Index apply, as well, to the indices for the distinction between domestic and non-domestic turnover.
<b>Legal Framework</b>	The compilation and publication of the Turnover Index is based on the framework of the implementation of Council Regulation (EC) No 1165/1998 concerning short-term statistics (STS-R), as well as Regulation (EC) No 1158/2005 of the European Parliament and of the Council amending Council Regulation (EC) No 1165/1998. Furthermore, this index is governed by Regulation (EC) No 1893/2006 of the European Parliament and of the Council, by Commission Regulation (EC) No 656/2007, by Regulation (EC) No 451/2008 of the Council, by Regulation (EU) No 2019/2152 of the European Parliament and of the Council on European business statistics, as well as Commission Implementing Regulation (EU) No 2020/1197 laying down technical specifications and arrangements pursuant to Regulation (EU) No 2019/2152.
<b>Reference period</b>	Month.
<b>Base year</b>	2015=100.0.
<b>Revision</b>	The latest revision of the Turnover Index in Industry (base year 2015=100.0) took place in the framework of Council Regulation (EC) No 1165/1998 concerning short-term statistics. In accordance with this regulation the index is revised every five years, in years ending in 0 or 5.
<b>Statistical classifications</b>	At the level of classes of economic activities, the statistical classification of economic activities NACE Rev. 2 of EU was used (Regulation No 1893/2006), while at the level of main industrial groupings, the allocation of two-digit and three-digit NACE Rev. 2 headings to categories of aggregate classification was used, in accordance with Commission Regulation No 656/2007.
<b>Geographical coverage</b>	The index covers the whole Country.
<b>Coverage of economic activities</b>	The Turnover Index in Industry is compiled for all activities listed in Sections B (mining and quarrying) and C (manufacturing) of the NACE Rev. 2 statistical classification.
<b>Computation of the Index</b>	The Turnover Index in Industry is a fixed base index. This index is calculated at a first stage at the four-digit level of economic activity and subsequently, with the implementation of appropriate weighting coefficients, the index is calculated at higher levels (three-level and two-level of economic activity) as well as at the level of Main Industrial Groupings (MIGs).
<b>Data collection and processing in the context of the COVID-19 pandemic</b>	The compilation of the indices was mainly based on data collected by the enterprises (via web-based application, email), as well as data from administrative sources. For March 2021 there was no significant change in the data collection compared to previous reference months.
<b>Publication of data</b>	The Turnover Index in Industry (2015=100.0) is released since August 2019 with June 2019 as first reference month. Data with base year 2015=100.0 are available from January 2000 onwards.
<b>References</b>	More information about the methodology concerning the compilation and calculation of the index and for the time series is available on the website of the Hellenic Statistical Authority (ELSTAT) ( <a href="http://www.statistics.gr/en/statistics/-/publication/DKT24/">http://www.statistics.gr/en/statistics/-/publication/DKT24/</a> ).